



**NEW**  
SLIDE & LOCK  
system

# FujiCEM 2

from GC

Superior resin-modified glass  
ionomer luting cement with our innovative  
**Force and Fusion** technology  
for your total peace of mind.

**GC**

# Take the **next step** in the dental materials **evolution**

Continuous improvement has always been a natural progression for a company like GC.

**GC FujiCEM 2**, a **paste-paste resin-modified glass ionomer luting cement**, combines the latest technology in glass-ionomer, high reliability and improved usability for an even better performance.

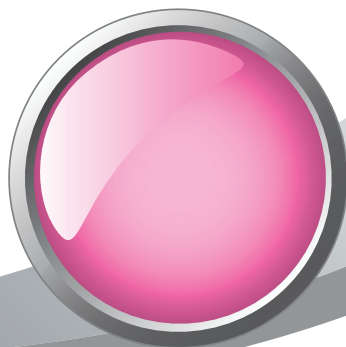


**GC FujiCEM 2  
Automix**



GC FujiCEM  
Automix

GC FujiCEM



## **Our experience at the service of your luting procedures**

Capitalizing on the reliability of its predecessors, **GC FujiCEM 2** is the result of a decade of experience with **more than 150 million crowns cemented worldwide**. **GC FujiCEM 2** offers you the reliability & the simplicity you need to perform outstanding cementations thanks to its high physical properties and comfortable handling.

# Peace of mind

## for all your luting procedures

**Comfortable handling** is an important factor for clinician confidence. No matter how you apply it, **GC FujiCEM 2** guarantees a smooth procedure, keeping your options open:

### Choose your preferred dispenser

Apart from the metallic Paste Pak Dispenser, you have the possibility to use the plastic plunger which is 85% lighter, autoclavable and cost-effective.



### Choose your preferred handling mode

#### Handmix

Choose the handmix option & easily mix pastes A and B.



#### Automix

Alternatively, the automix option is perfect for a faster and more precise mixing with no risk of including bubbles or voids.



FujiCEM 2 now features the **SLIDE & LOCK system**, an improved cartridge design for an easier plug-in & plug-out of mixing tips.



### Choose your preferred mixing tips

Next to the 'regular' mixing tip, the GC FujiCEM 2 Mixing Tip SL for Endo features a thin and angled elongation tip for an easier injection into the root canal for post cementation.

GC FujiCEM 2 Mixing Tip SL



GC FujiCEM 2 Mixing Tip SL for Endo



Dr. L. Dahan, France

# What you can expect from **GC FujiCEM 2**

With this complete luting system – based on resin modified glass ionomer technology – you choose a safe solution for your patients. This material boasts the following 5 key properties:

1



## Broad range of indications

- Metal-based inlays, onlays, crowns and bridges
- Resin-based inlays, onlays, crowns and bridges
- All ceramic inlays
- High strength (e.g. zirconia based, lithium disilicate etc.) all ceramic inlays, onlays, crowns and bridges
- Metal, ceramic and fiber posts



D. Galle, Belgium

2



## Strong retention

The final cement has the optimum chemical balance for maximum adhesion to tooth substance, alloy, or composite. The early, high compressive and flexural strength provides the best possible support for your indirect restorations.

3



## Sustained fluoride release

In the long term, the paste releases more fluoride than other self-adhesive resin cements.

4



## Sealing ability and marginal integrity

Chemical bonding to tooth structure maintains the marginal seal, minimizing the risk of micro leakage and secondary caries.

5



## No post-operative sensitivity

It is non-irritating to tooth structures or surrounding soft tissues, so the cement poses no risk of post-op sensitivity for patients.

# Innovative technology for long-lasting cementations

## Moisture tolerant



GC FujiCEM 2 rules out the need of rubber dam or extra care to control humidity.

## Self-adhesive



No need for previous etching and bonding in different steps.

## Ideal consistency



The mixed paste is not runny, yet allowing for a perfect flow under seating pressure.

## Unmatched film thickness



It flows perfectly under seating pressure to create an incredibly thin film thickness.

## Easy clean-up



One minute after luting, the cement reaches a rubbery consistency for **non-messy removal of excess material.**

## Long-lasting restoration



**No post-operative sensitivity, durable adhesion and sustained fluoride release.**

Dr. F. Raux, France



## FORCE & FUSION TECHNOLOGY

Powered by the Force & Fusion technology, GC FujiCEM 2 doubles the shear bond strength of the original FujiCEM, rewarding you with even longer lasting restorations\*.

\*Data on file

## FORCE New high elastic cross linking monomer technology

A flexible long-chain monomer gives GC FujiCEM 2 its higher flexural strength which allows it to act like a shock absorber, better resisting to the challenges of occlusal loads.



## FUSION Modified filler-surface treatment

This creates a strong bond between particles and resin matrix.

# GC FujiCEM 2,

## reliable, easy-to-use and versatile

### Packages

GC FujiCEM 2		
900898	GC FujiCEM 2 SL Automix	Paste Pak Cartridge SL (13,3g / 7.2 mL) (2), GC FujiCEM 2 Mixing Tip SL (44)
900897	GC FujiCEM 2 SL Refill	Paste Pak Cartridge SL (13,3g / 7.2 mL) (2) with mixing pad (No. 22)
900901	GC FujiCEM 2 SL Automix Starter kit with Paste Pak Dispenser (metal)	Paste Pak Cartridge SL (13,3g / 7.2 mL) (1), GC FujiCEM 2 Mixing Tip SL (15), GC FujiCEM 2 Mixing Tip SL for Endo (5), Paste Pak Dispenser (metal) (1)
900900	GC FujiCEM 2 SL Automix Starter kit with GC FujiCEM 2 Dispenser (plastic)	Paste Pak Cartridge SL (13,3g / 7.2 mL) (1), GC FujiCEM 2 Mixing Tip SL (15), GC FujiCEM 2 Mixing Tip SL for Endo (5), GC FujiCEM 2 Dispenser (plastic) (1)
GC FujiCEM 2 Accessories		
900902	GC FujiCEM 2 Mixing Tip SL, Refill pack	GC FujiCEM 2 Mixing Tip SL (20)
900903	GC FujiCEM 2 Mixing Tip SL for Endo, Refill pack	GC FujiCEM 2 Mixing Tip SL for Endo (10)
001573	Paste Pak Dispenser	Paste Pak Dispenser (metal) (1)
004647	GC FujiCEM 2 Dispenser	GC FujiCEM 2 Dispenser (plastic) (1)



GC FujiCEM 2 SL Automix



GC FujiCEM 2 SL Refill



GC FujiCEM 2 SL Automix Starter kit with GC FujiCEM 2 Dispenser

#### GC EUROPE N.V.

Head Office  
Researchpark  
Haasrode-Leuven 1240  
Interleuvenlaan 33  
B-3001 Leuven  
Tel. +32.16.74.10.00  
Fax. +32.16.40.48.32  
info@gceurope.com  
http://www.gceurope.com

#### GC UNITED KINGDOM Ltd.

12-15, Coopers Court  
Newport Pagnell  
UK-Bucks. MK16 8JS  
Tel. +44.1908.218.999  
Fax. +44.1908.218.900  
info@uk.gceurope.com  
http://uk.gceurope.com

