

# SlimShaper PRO<sup>®</sup>

THE PERFECT BALANCE  
FOR MINIMALLY INVASIVE  
ENDODONTICS

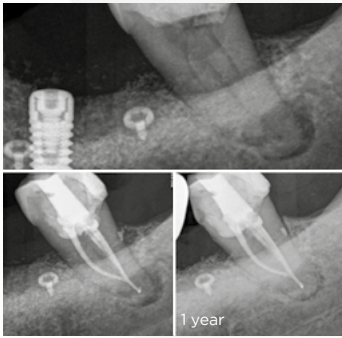


**DualWire<sup>®</sup>**

With the exclusive DualWire<sup>®</sup>  
technology, patented by Zarc,  
for greater instrument efficiency,  
resistance, and flexibility.

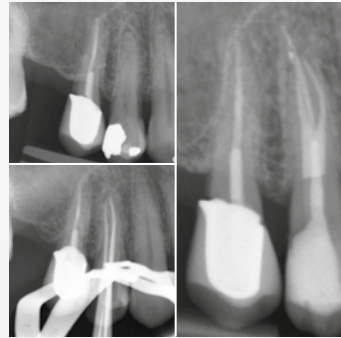
# The best tool for complex anatomies

SlimShaper PRO® has been specifically designed to meet the needs of endodontic professionals working with **complex anatomies**, providing a cutting-edge tool that represents the forefront of **minimally invasive endodontics**.



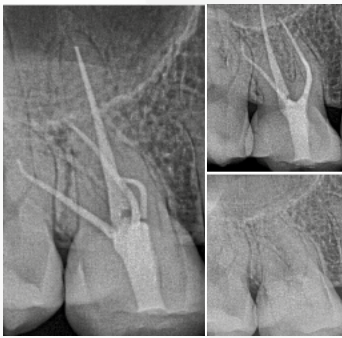
## Dr. José Aranguren

Minimally Invasive System with DualWire® Technology: cutting and flexibility combined in highly conservative preparations.



## Dr. Massimo Giovarruscio

SlimShaper PRO®, thanks to DualWire® technology, ensures exceptional flexibility and cutting effectiveness, maintaining minimally invasive endodontic treatment, especially with multiple and complex small anatomies.



## Professor Shanon Patel

SlimShaper PRO® changes the game. DualWire® technology makes instrumentation easy and predictable.



DualWire® technology has been developed by Zarc to achieve the perfect balance between effectiveness, torsional stress, and flexibility in every SlimShaper PRO® instrument.

## SlimShaper PRO®

The perfect balance

SlimShaper PRO® is the second system in the PRO family that has revolutionized endodontics thanks to **DualWire® technology**. Now it's **more flexible, resilient, and effective** than ever.

It features a **sharper tip**, enhanced by its double 3 mm heat treatment, offering **greater cutting efficiency, canal penetration, and torsional stress resistance**. This reduces the risk of fractures or deformations.

### DualWire® Technology

Zarc's PRO family includes DualWire® technology to provide instruments with the perfect balance between effectiveness, resilience, and flexibility.



DualWire®



## The minimally invasive system

SlimShaper PRO® is an instrumentation system with unprecedented flexibility. Its 3-4% taper makes it even more conservative, versatile, and safer.

### SlimShaper PRO®

#### SILVER + GOLD

**Maximum cutting capacity, canal penetration, and torsional stress resistance.**

#### GOLD + PINK

**The perfect balance between cutting capacity and flexibility.**

#### GOLD + BLUE

**Extraordinary flexibility and increased resistance to cyclic fatigue.**



**SlimShaper PRO® preserves twice as much dentin as a traditional instrumentation system.**

Karim Aazzouzi-Raiss; Ana Ramírez-Muñoz; Pedro M. Mendez; Gaya C. S. Vieira; José Aranguren; Alejandro R. Pérez. J Endod . 2023 Apr;49(4):430-43.



Minimally invasive



Maximum cutting ability



Resistance to torsional stress



Flexibility and shape memory control



Versatility

## Maximum flexibility

SlimShaper PRO® consists of only 3 instruments, all of them with DualWire® technology.

### Specifically designed for complex anatomies

(narrow, large, and/or double curvatures) or with high levels of complexity.

ZS1



TAPER

6-2%

Ø

15

ZS2



3-4%

20

ZS3



3-4%

25

# SlimShaper PRO®

## Easy integration into clinical routine

The versatility of the SlimShaper PRO® system provides **quick and easy handling** during canal preparation.

- Exclusive **DualWire®** technology.
- New system from the **PRO** family with **two heat treatments in a single file**.
- **Increased versatility**, enhances cutting efficiency, torsional stress resistance, and canal penetration.
- **Resistance** to cyclic fatigue.

At Zarc, we **lead in innovation**

## System references

### SlimShaper PRO® 21 mm

**ZSS210PRO1** ZS1 21 mm (6 units) sterile  
**ZSS210PRO2** ZS2 21 mm (6 units) sterile  
**ZSS210PRO3** ZS3 21 mm (6 units) sterile  
**ZSS21APRO6** ZS1-ZS3 21 mm (6 units) sterile  
**ZSS21APRO3** ZS1-ZS3 21 mm (3 units) sterile

SlimShaper Pro® gutta-percha and paper tips are an integral part of the SlimShaper® line.

### SlimShaper PRO® 25 mm

**ZSS250PRO1** ZS1 25 mm (6 units) sterile  
**ZSS250PRO2** ZS2 25 mm (6 units) sterile  
**ZSS250PRO3** ZS3 25 mm (6 units) sterile  
**ZSS25APRO6** ZS1-ZS3 25 mm (6 units) sterile  
**ZSS25APRO3** ZS1-ZS3 25 mm (3 units) sterile

### Gutta-percha

**GP-201** Gutta-percha ZS1 (60 units)  
**GP-202** Gutta-percha ZS2 (60 units)  
**GP-203** Gutta-percha ZS3 (60 units)

### SlimShaper PRO® 31 mm

**ZSS310PRO1** ZS1 31 mm (6 units) sterile  
**ZSS310PRO2** ZS2 31 mm (6 units) sterile  
**ZSS310PRO3** ZS3 31 mm (6 units) sterile  
**ZSS31APRO6** ZS1-ZS3 31 mm (6 units) sterile  
**ZSS31APRO3** ZS1-ZS3 31 mm (3 units) sterile

### Paper points

**PP-201** Paper points ZS1 (100 units)  
**PP-202** Paper points ZS2 (100 units)  
**PP-203** Paper points ZS3 (100 units)

[hola@zarc4endo.com](mailto:hola@zarc4endo.com)  
[www.zarc4endo.com](http://www.zarc4endo.com)

