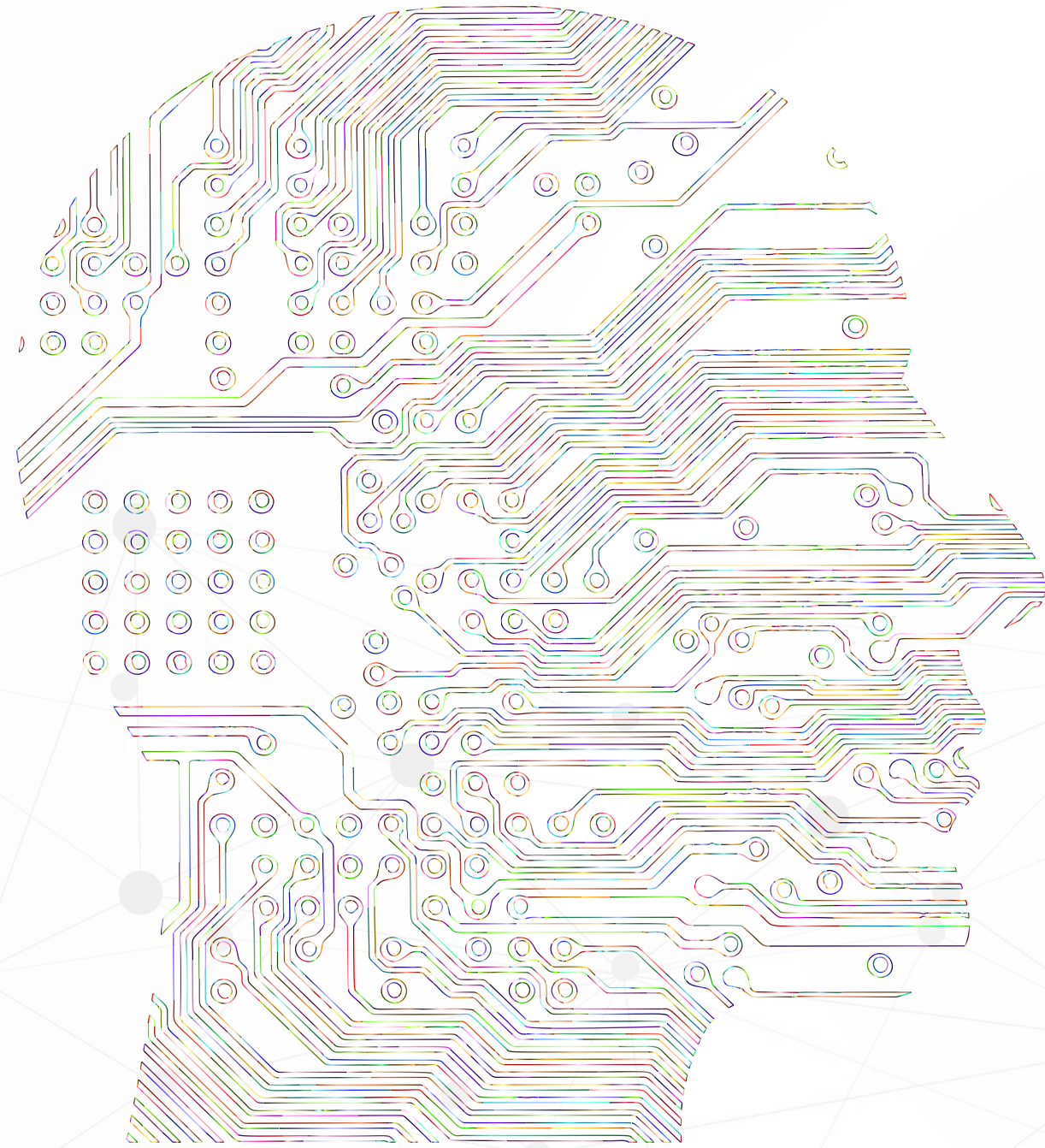
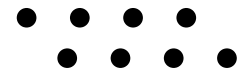


Presented by **JAY MAURYA**



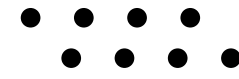
Artificial Intelligence

FOR EVERYDAY LIFE



Let's Get Started



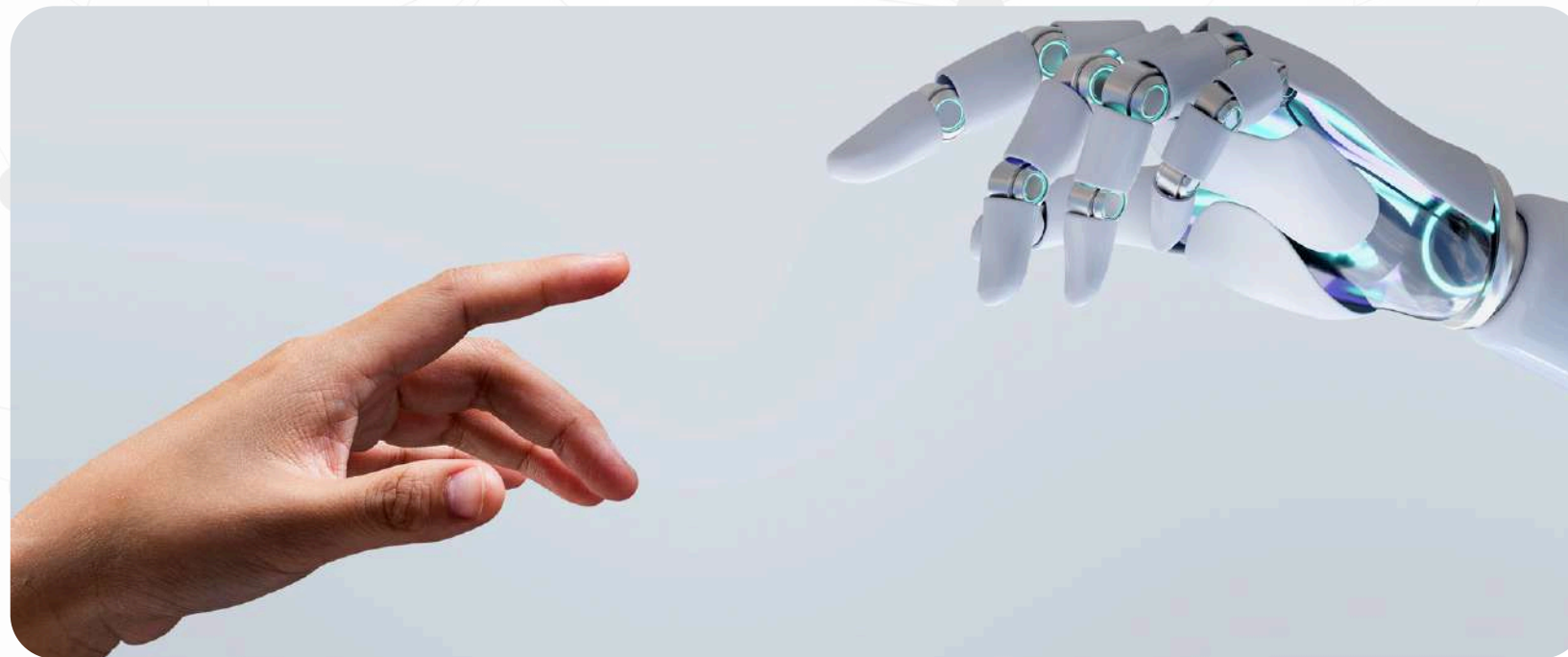


➔ **PROBLEM ANALYSIS**

Poor time management and learning inefficiency.

Lack of personalized guidance and reminders.

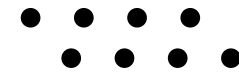
Manual systems cannot handle large student data effectively.



Students face daily academic and campus challenges.

- Teachers cannot provide personalized attention to every student.
- No AI-based assistant for personalized learning.
- Campus navigation is difficult for new students.
- Mental stress due to academic pressure.





Proposed Solution

AI-powered Smart Student Assistant Platform.

Personalized study planning using Machine Learning.

AI chatbot for doubt solving.

Smart campus navigation and alerts.



→ Key Features

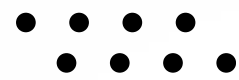
- Personalized AI study planner and timetable generator.
- AI doubt solver using NLP chatbot.
- Smart reminders for exams, events, and tasks.
- Performance tracking dashboard.
- Campus map navigation and smart alerts.

→ Existing Solutions

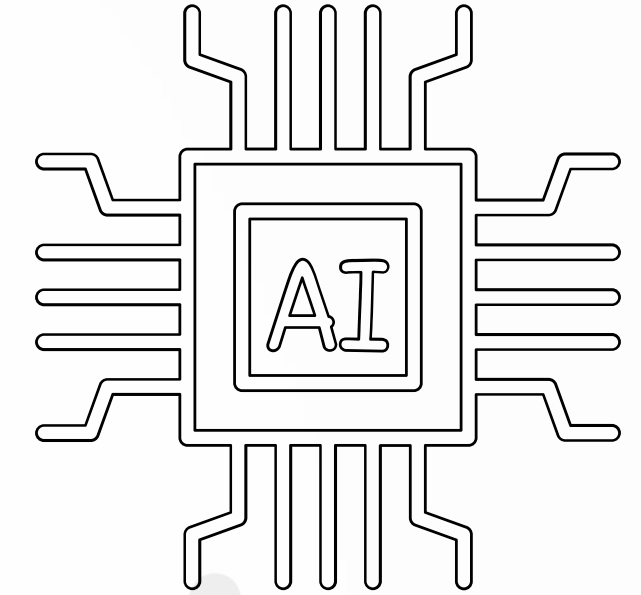
- Learning apps like Coursera and YouTube are not personalized.
- No integrated campus-level AI assistant.
- Current systems are fragmented and non-intelligent.



System Architecture & Technology Stack



Presented by **JAY MAURYA**



→ AI/ML :

TensorFlow / Scikit-learn / NLP APIs.

→ Frontend:

Android App / Web Dashboard
HTML / CSS / javascript

→ Backend :

Flask / Node.js.

→ Database

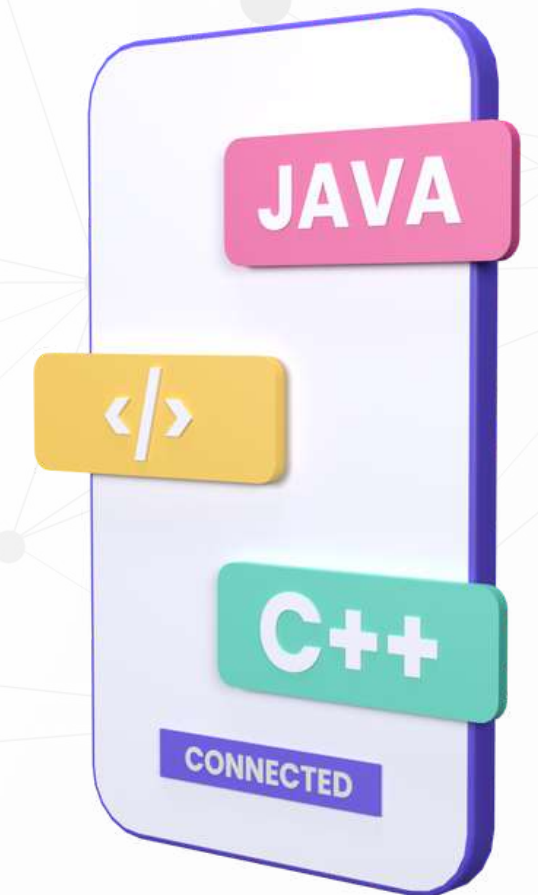
Firebase / MySQL / Cloud Storage

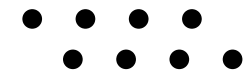
- **User interacts via Mobile/Web Application.**

Backend AI Engine processes data and predictions.

Cloud Database stores student profiles and logs.

IoT devices integrate smart classrooms and attendance.





Presented by JAY MAURYA

Implementation Methodology

Phase 1:

Requirement gathering and system design.

Phase 2:

AI model training and dataset preparation.

Phase 3:

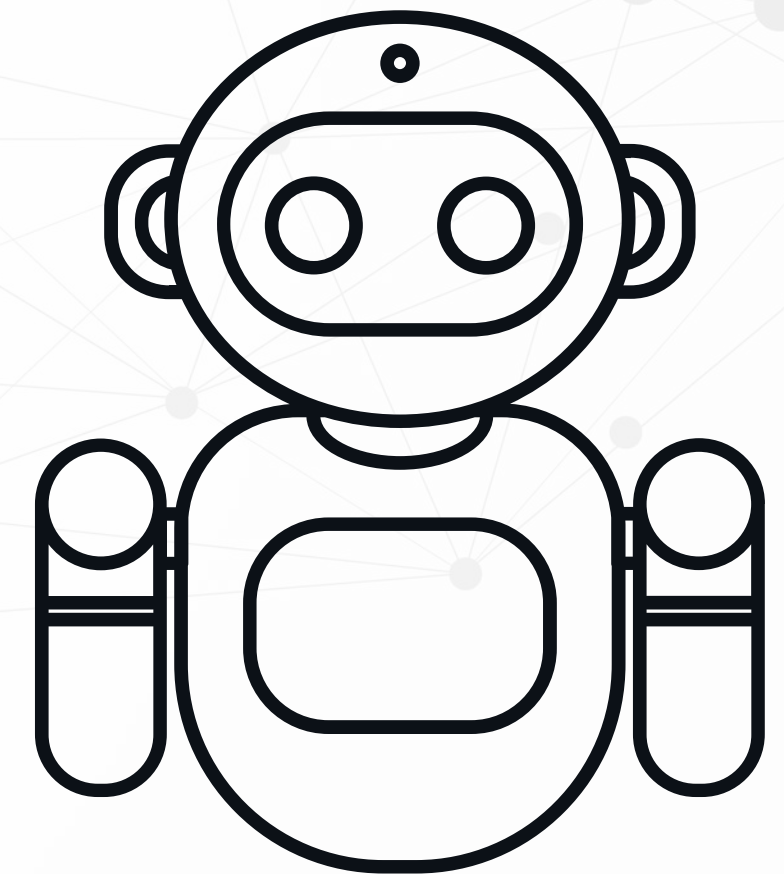
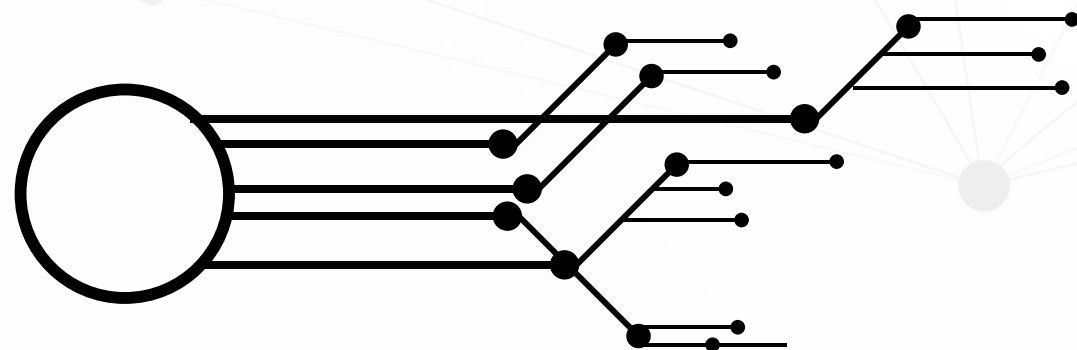
App and backend development.

Phase 4:

Integration and system testing.

Phase 5:

Deployment and user training.



Use Case Scenarios & Academic Impact

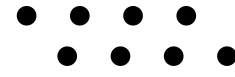
→ **Improves learning outcomes and productivity.**

Reduces student stress and dropout rates.
Promotes smart and digital campus culture.
Supports Digital India and Smart India Mission.

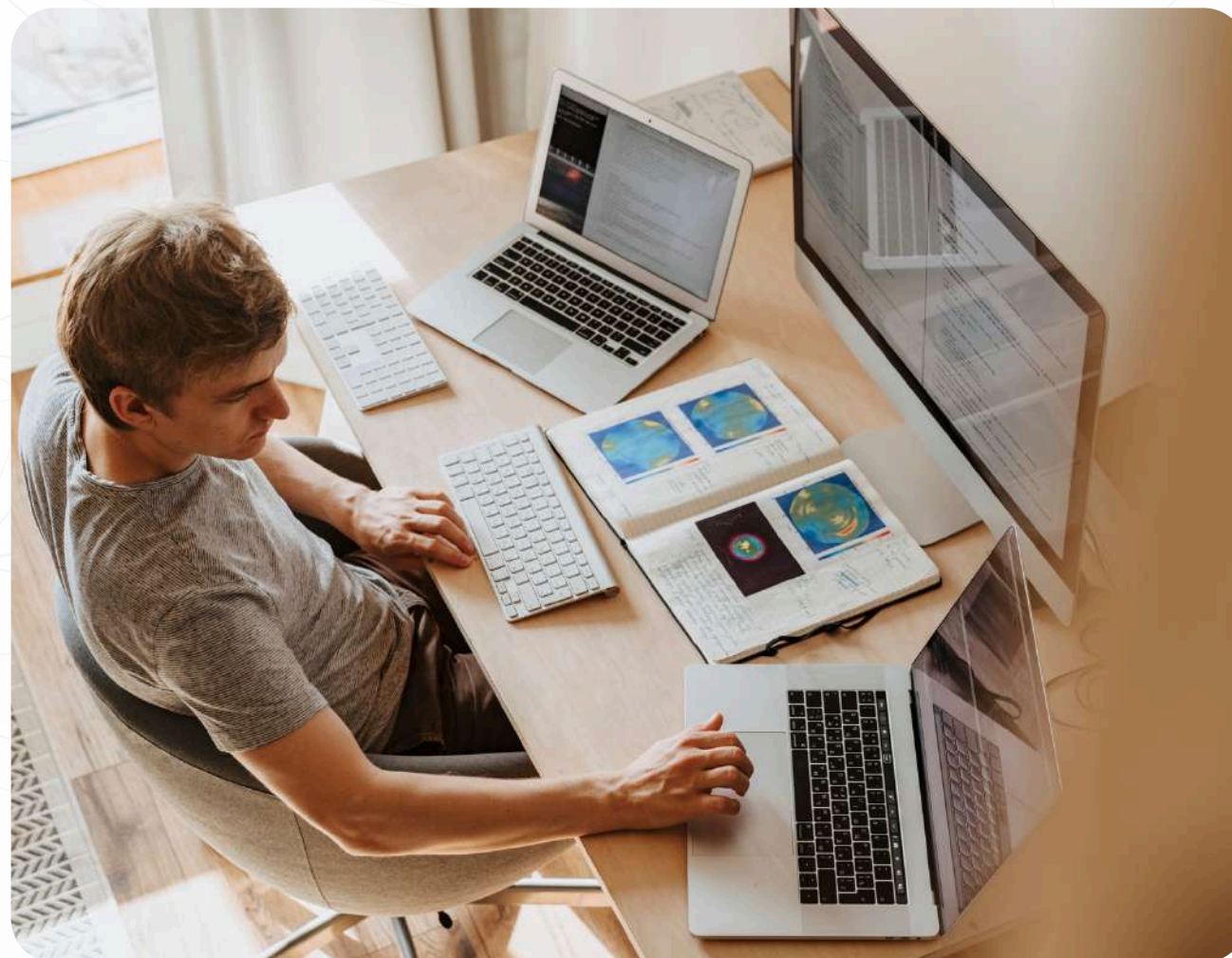
→ **Student receives personalized daily study plan.**

AI chatbot answers doubts instantly.
System sends reminders for exams and deadlines.
New student navigates campus using AI map.
Teacher views student performance dashboard.





Can be deployed in schools, colleges, and universities.
Scalable SaaS model for institutions.
Potential integration with LMS platforms.
Opportunity for EdTech startups.



What's Next in AI?

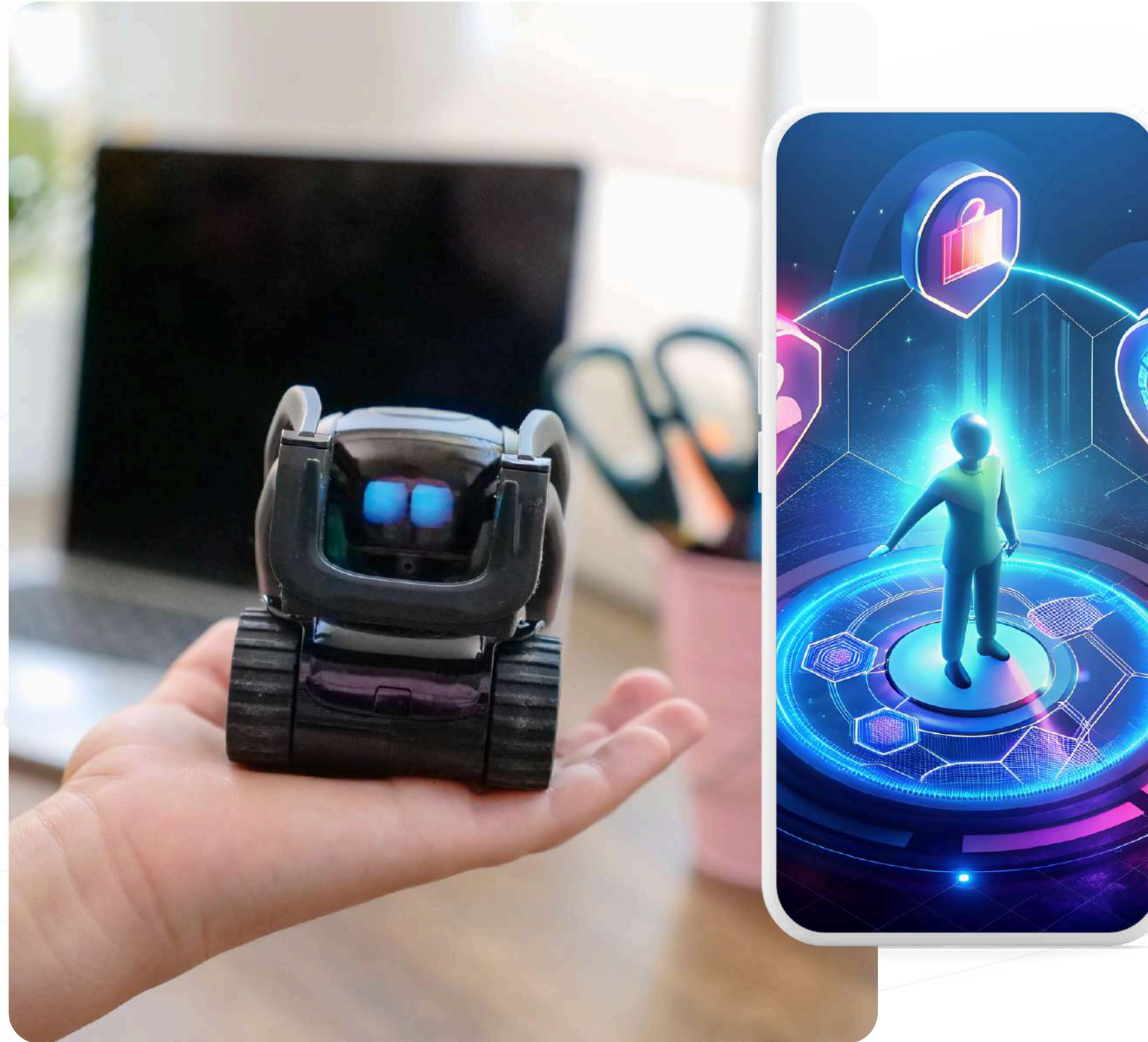
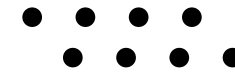
AI career mentor and counseling system.

Integration with smart classroom IoT devices.
Voice-based AI assistant.
Predictive analytics for student success.

- Generative AI
- Autonomous Everything
- Smart campus




Presented by **JAY MAURYA**



Embrace the AI Revolution!

THANK YOU!

 jaymaurya3103@gmail.com

