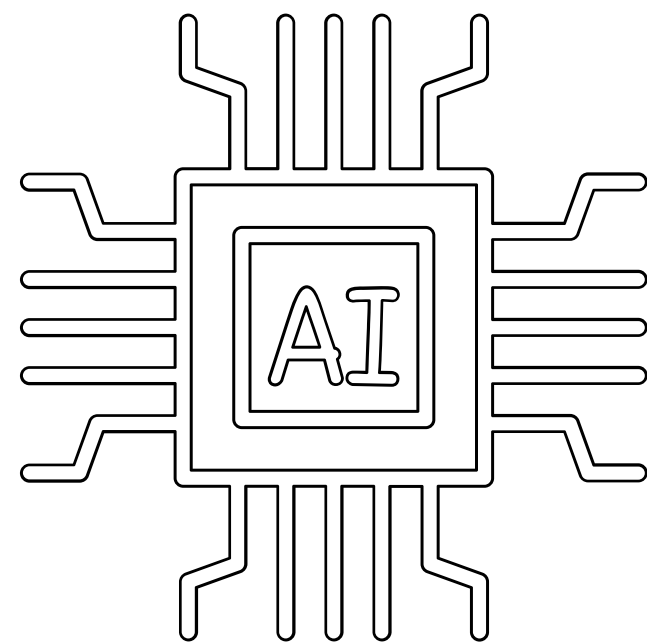
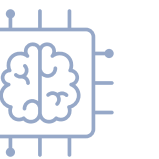


Artificial intelligence

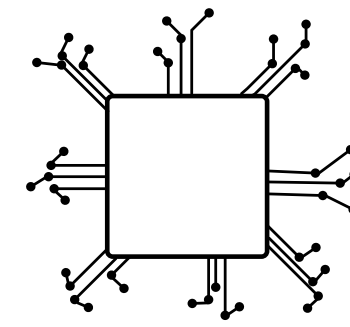
For Everyday Live



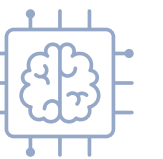
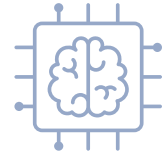
Presented by **Vedant Verma**



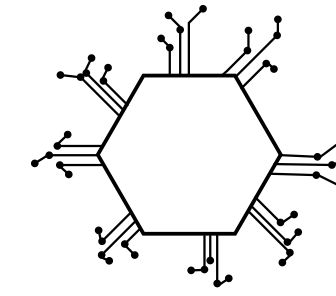
► Why AI for Everyday Campus Problems ?

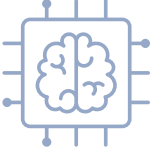


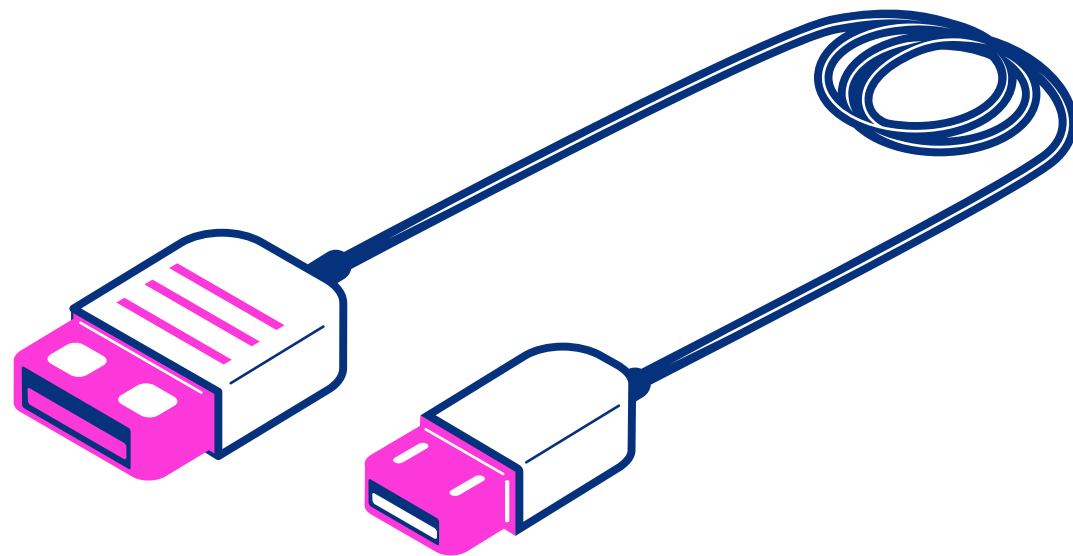
- Campus life involves academics, administration, transport, hostel, and social interaction.
- Many processes are still manual, time-consuming, or inefficient
- Students face stress, miscommunication, and lack of real-time support.
- AI has the potential to automate tasks and improve decision-making.
- Smart solutions can transform a normal campus into a smart campus ecosystem.



▶ Common Campus Challenges



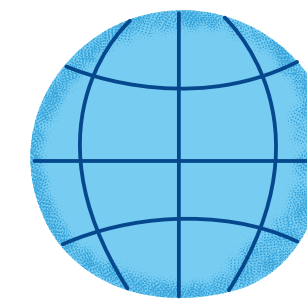
- Long waiting time in canteens and administrative offices. 
- Difficulty tracking attendance and academic progress.
- Delayed communication of notices and updates.
- Mental health challenges and academic pressure.
- Transport delays and hostel complaint management issues.



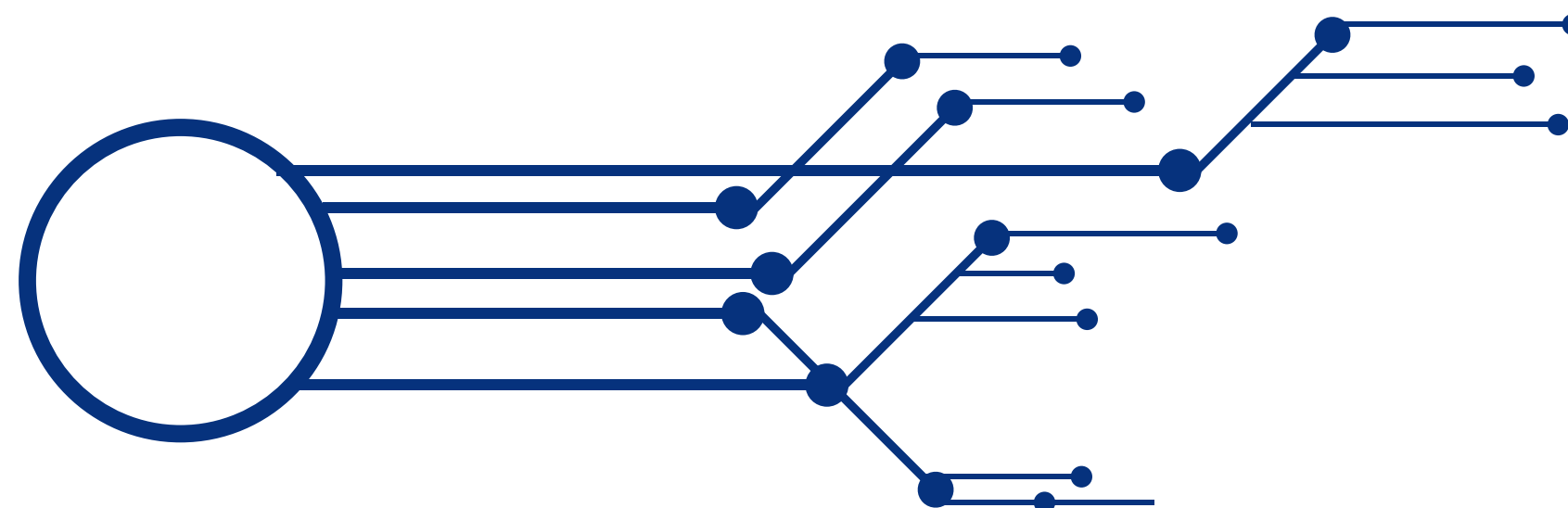
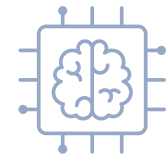
Presented by **Vedant Verma**



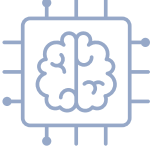
► Expected Solution Approach



- Identify a real and specific campus problem.
- Research current gaps in existing systems.
- Design an AI-powered solution with clear workflow.
- Develop prototype (App, Website, Dashboard, or Model).
- Present impact analysis – How will it improve campus life?



► Role of Artificial Intelligence

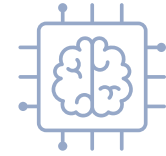
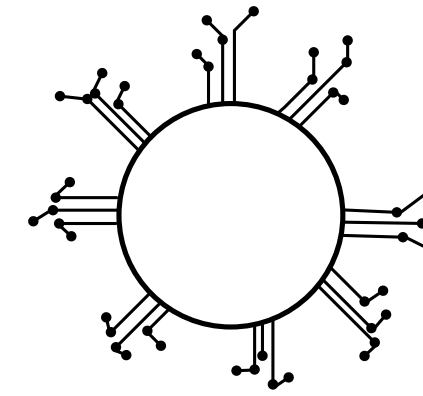
- Machine Learning helps analyze data and predict outcomes. 
- Natural Language Processing enables intelligent chatbots and assistants.
- Computer Vision allows smart attendance and surveillance systems.
- Data Analytics provides performance insights and trend analysis.
- Automation reduces manual workload and human errors.



Presented by **Vedant Verma**



▶ System Architecture & Technology Stack



- User interacts via Mobile/Web Application.

- **Frontend(User Interface):**

Android App / Web Dashboard HTML / CSS / javascript

- **Backend(Server Side):**

Flask / Node.js/Django/python.

- **AI/Machine Learning Layer:**

TensorFlow / Scikit-learn / NLP APIs.

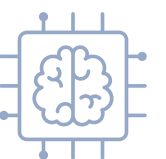
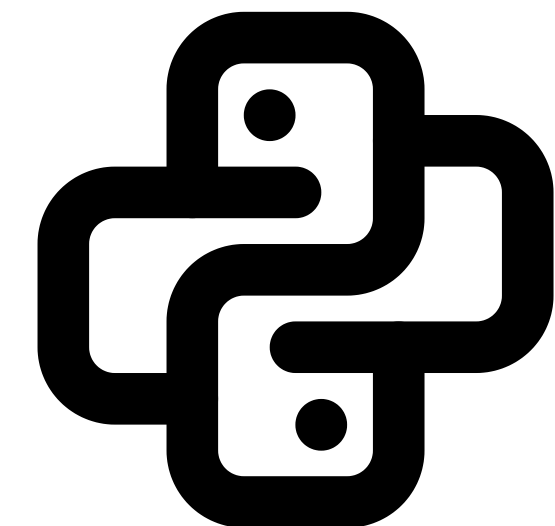
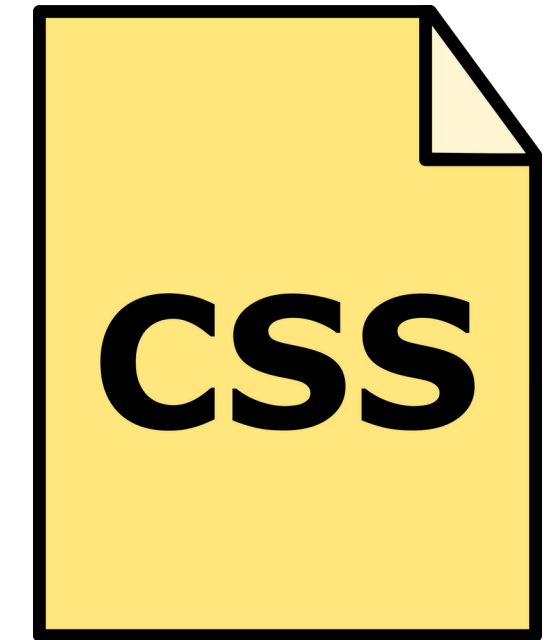
- **Database Layer:**

Firebase / MySQL / Cloud Storage

HTML



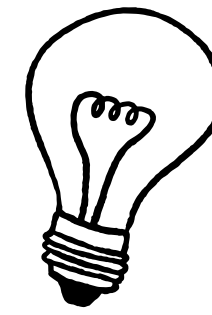
CSS



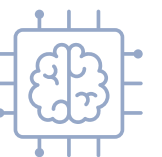
Presented by **Vedant Verma**

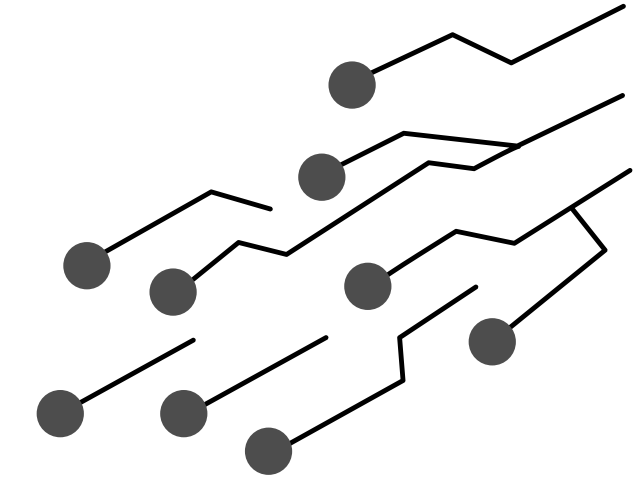
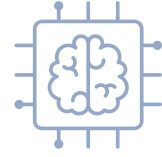


► Expected Impact on Campus

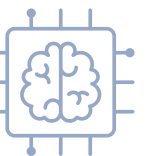
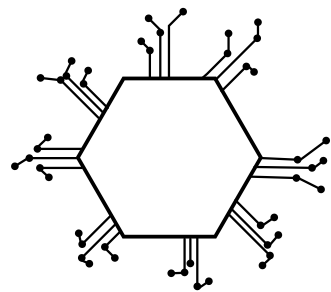


- Improved operational efficiency and reduced waiting time.
- Better academic performance tracking.
- Enhanced communication between students and administration.
- Support for student well-being and mental health.
- Foundation for building a sustainable Smart Campus.





Thank You



Presented by **Vedant Verma**