

Max M. & Marjorie S.
Fisher Music Center
3711 Woodward Avenue
Detroit, MI 48201-2403

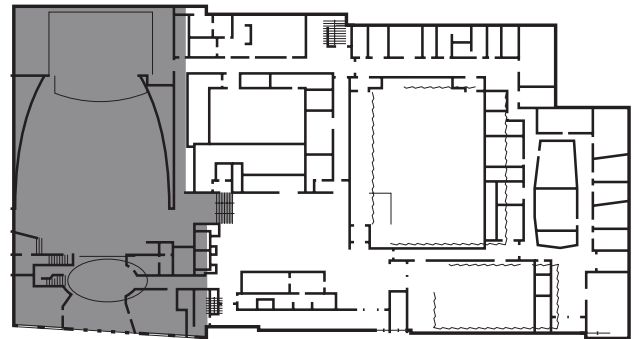
dso.org/rent
313-576-5065

ORCHESTRA HALL

Imagine your performance or presentation in the superb acoustics of Orchestra Hall! Built in 1919, the Orchestra Hall stage has been graced by the world's greatest musicians, performing for appreciative audiences. With expanded lobby areas, elevators, coat check and restroom facilities, improved seating, and HVAC, Orchestra Hall is Detroit's best venue for an audience of up to 2,000.



World-renowned for its acoustical qualities, Orchestra Hall combines an elegant ambiance with advanced audio-visual technology. The 2000-seat hall is equipped with an in-house camera system intended to provide video feeds to The Cube, the Robert A. and Maggie Allesee Rehearsal Hall and other display locations for purposes of live and digitally recorded events. It is possible to record performances and presentations for archival purposes and master recording for off-line editing at other facilities. Orchestra Hall is capable of providing multimedia presentations, lectures and screenings utilizing video, multimedia computers, and large screen projection with rigging and sight lines to accommodate front and rear projection with rental/portable equipment.



Orchestra Hall Stage

Dimensions:

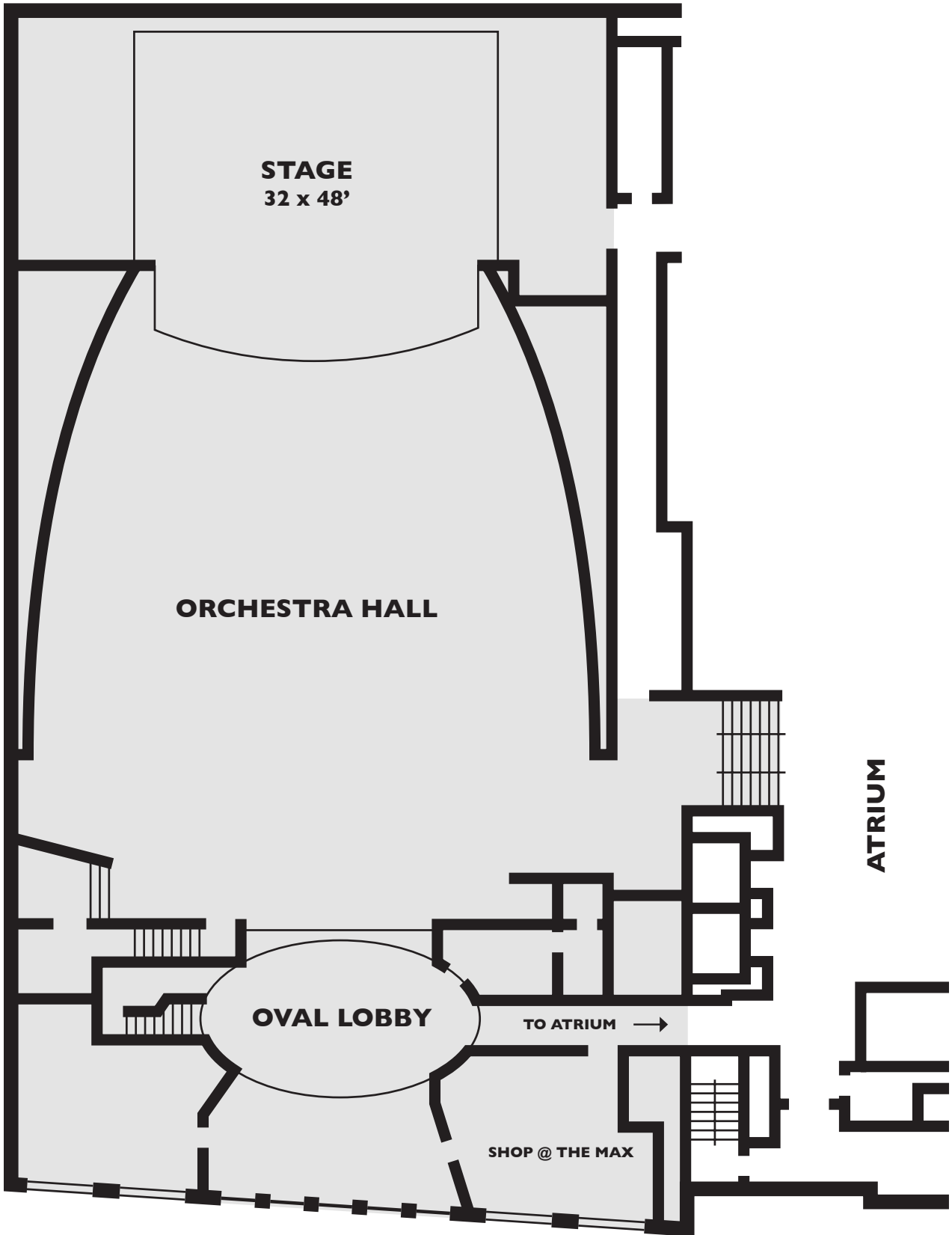
W: 32' L: 48' 1,536 Square Feet

Capacity:

Theatre Style:	188
Reception/Strolling:	256
Banquet:	110
Audience:	2,000



ORCHESTRA HALL



Max M. & Marjorie S.
Fisher Music Center
3711 Woodward Avenue
Detroit, MI 48201-2403

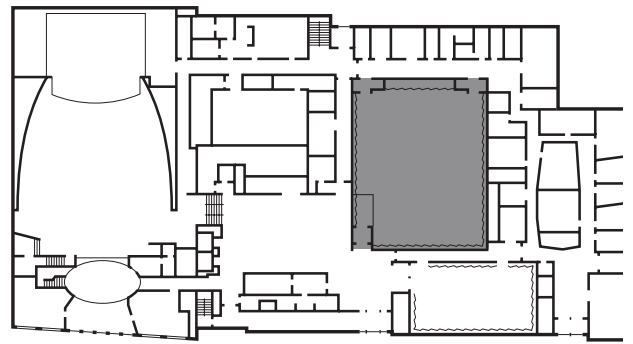
dso.org/rent
313.576.5065

THE PETER D. AND JULIE F. CUMMINGS CUBE

This flexible and acoustically excellent hall seats up to 450 for performances on ramped seating or up to 320 at banquet tables. The Cube can be used alone for a public performance or a private dinner, or combined with the adjacent Atrium and Allesee Hall for strolling receptions serving groups as large as 1,500. It also features a cherry wood floor, ideal for dancing.



The Cube offers all of the audio-visual advantages of Orchestra Hall with capabilities to record performances and presentations for archival and master recording for off-line editing at other facilities. Along with this audio visual support, The Cube can also meet your specific party needs with catering services and flexible seating. Accommodating 450 people theatre style or 320 people banquet style, The Cube is an ideal place for multimedia presentations, lectures and screenings utilizing video, multimedia computers, and slide projection. Additionally, The Cube can utilize large screen projection with rigging and sight lines to accommodate front projection with rental or portable equipment.



The Cube

Dimensions:

W: 68' L: 75' 4,500* Square Feet

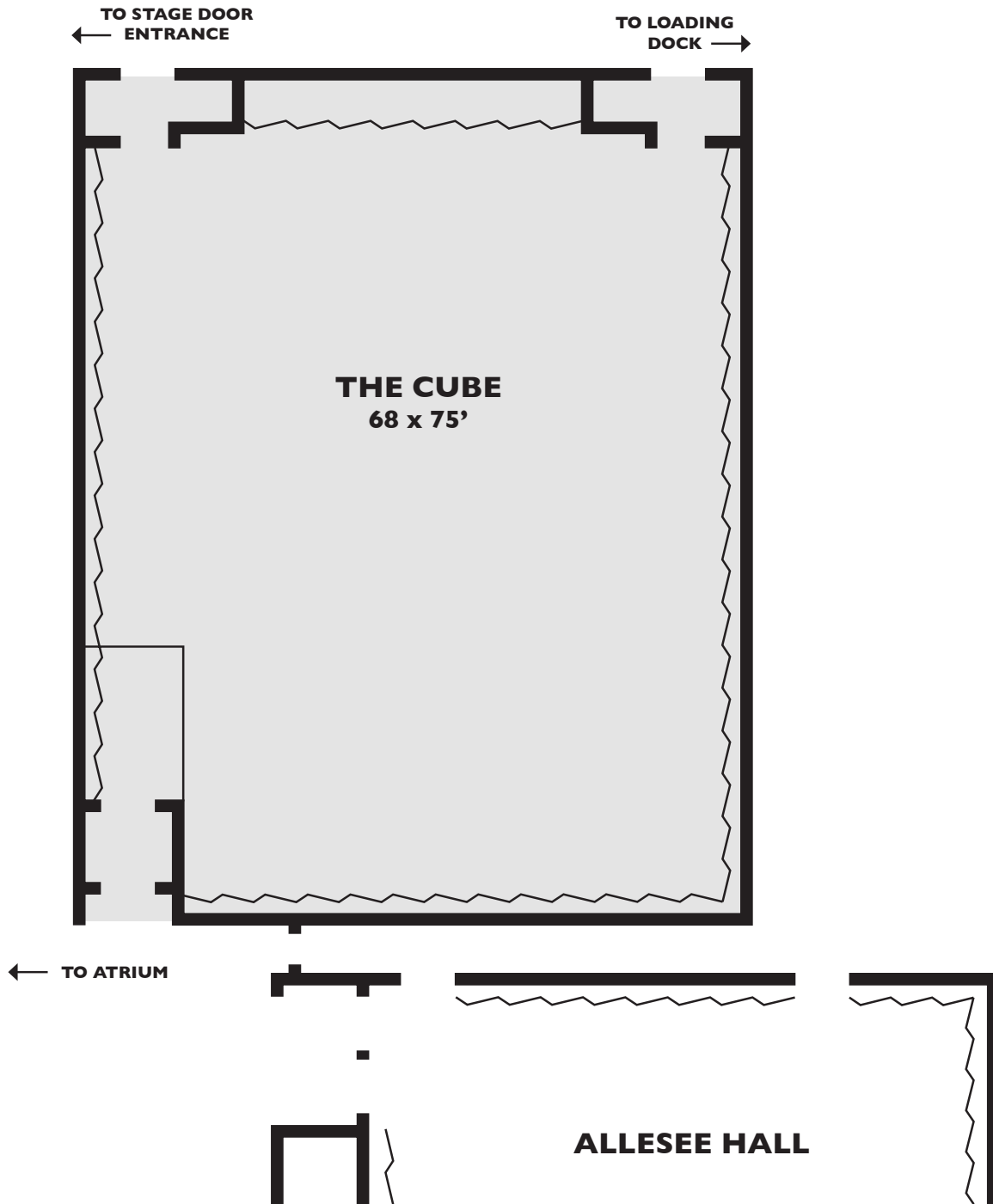
Capacity:

Theatre Style:	450
Reception/Strolling:	750
Banquet:	320

**Less 600 square feet for wings and vestibule.*



THE PETER D. AND JULIE F. CUMMINGS CUBE



Max M. & Marjorie S.
Fisher Music Center
3711 Woodward Avenue
Detroit, MI 48201-2403

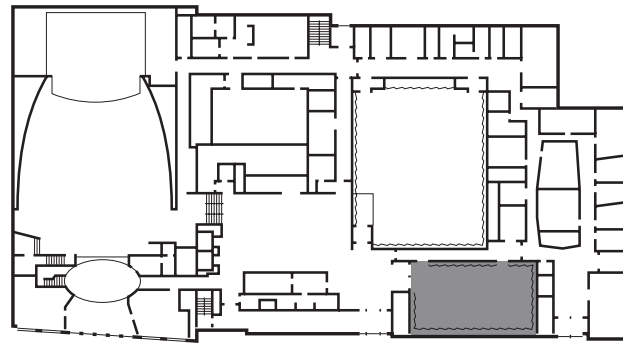
dso.org/rent
313.576.5065

ROBERT A. AND MAGGIE ALLESEE REHEARSAL HALL

Sized for intimate dinners for up to 150, performances for up to 200, or receptions for up to 300, Allesee Hall's warm wood floor and golden acoustic paneling make it a wonderful place for people to gather. Allesee Hall is part of the Jacob Bernard Pincus Music Education Center.



The Robert A. and Maggie Allesee Rehearsal Hall, an intimate setting for gatherings of up to 200 people, is fully wired and equipped for portable video equipment. Whether you are showing a video or recording an event, this cozy hall can support a rentable/portable audio-visual system.



Allesee Hall

Dimensions:

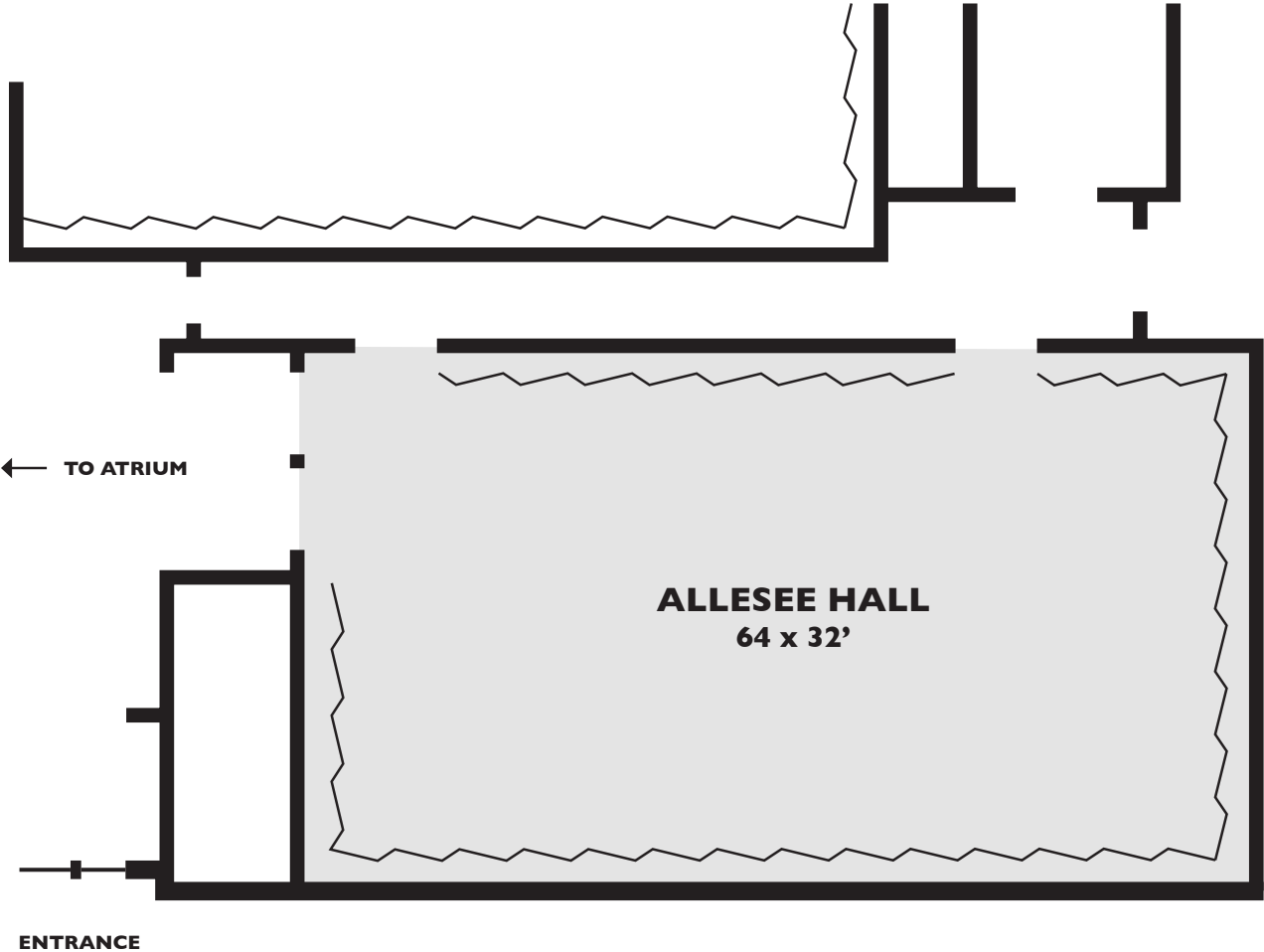
W: 32' L: 64' 2,048 Square Feet

Capacity:

Theatre Style:	200
Reception/Strolling:	300
Banquet:	150



ROBERT A. AND MAGGIE ALLESEE REHEARSAL HALL

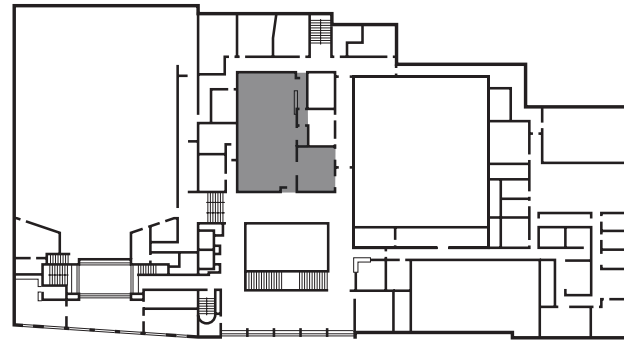


Max M. & Marjorie S.
Fisher Music Center
3711 Woodward Avenue
Detroit, MI 48201-2403

dso.org/rent
313.576.5065

HERMAN AND SHARON FRANKEL DONOR LOUNGE

On concert nights, the Donor Lounge is filled with the DSO's generous patrons and supporters, enjoying an elegant, private atmosphere adjacent to the Box Level of Orchestra Hall. When the orchestra is not performing, the Donor Lounge is a perfect location for dinner for up to 50 or receptions for up to 100 guests, with its high vaulted ceiling, warm wood and stone finishes, and dedicated catering prep area.



Donor Lounge

Dimensions:

W: 29' L: 63' 1,827 Square Feet

Capacity:

Theatre Style:	75
Reception/Strolling:	100
Banquet:	50

Green Room

Dimensions:

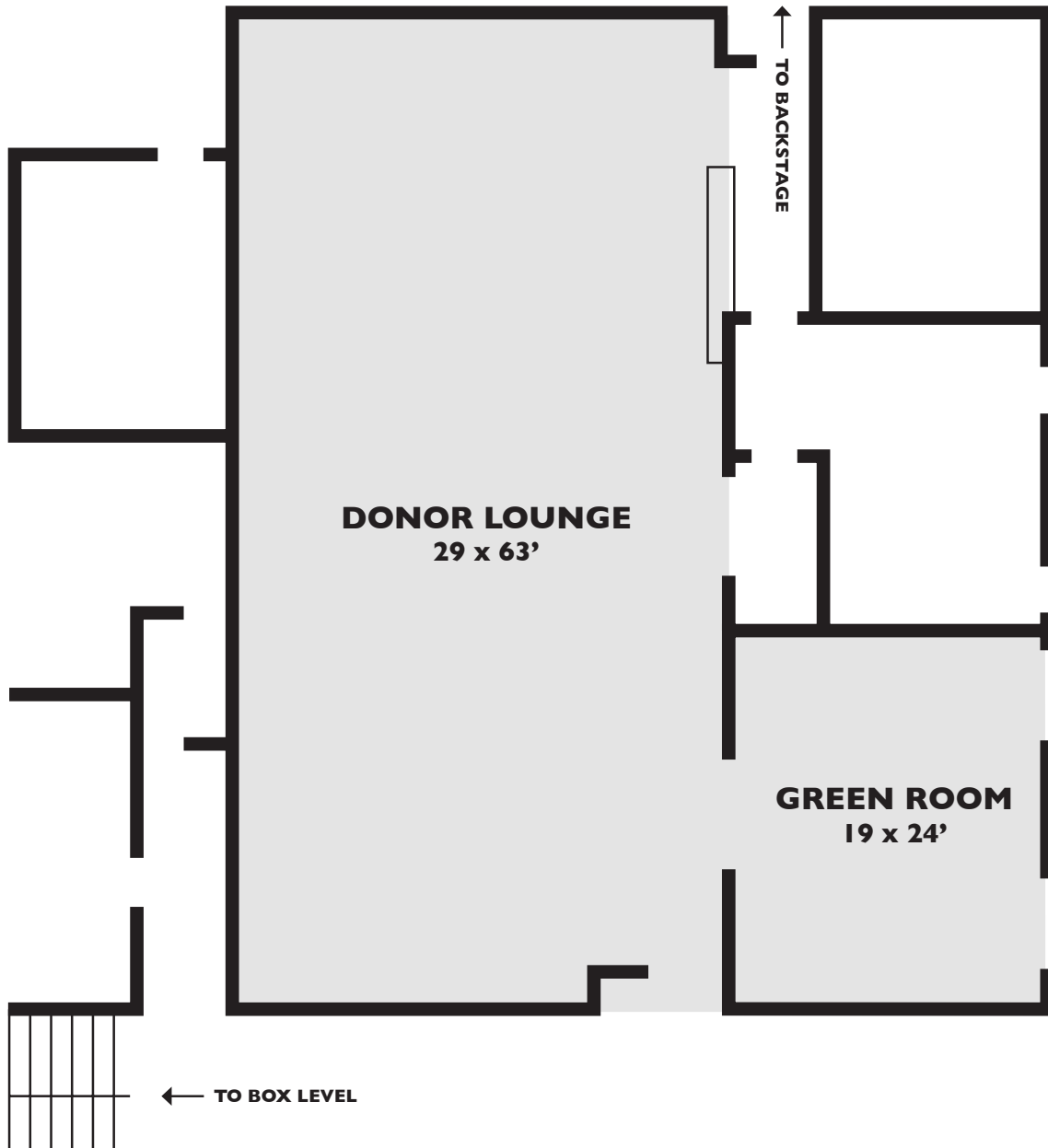
W: 19' L: 24' 456 Square Feet

Capacity:

Theatre Style:	25
Reception/Strolling:	50
Banquet:	20



HERMAN AND SHARON FRANKEL DONOR LOUNGE



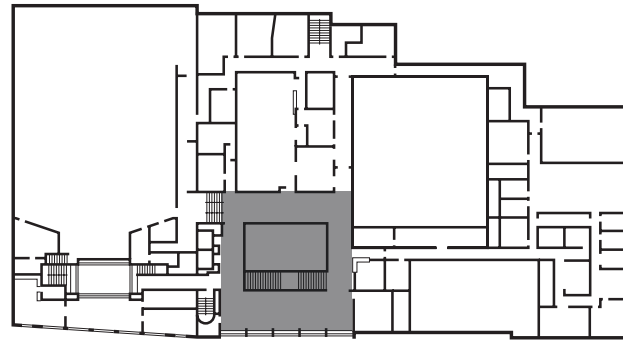
Max M. & Marjorie S.
Fisher Music Center
3711 Woodward Avenue
Detroit, MI 48201-2403

dso.org/rent
313.576.5065



ATRIUM AND WOODWARD WINDOWS

Want your guests to feel part of the City? Stage your reception by the Woodward Windows, on the second and third levels of the Atrium in The Max, with floor to ceiling views of Woodward Avenue. Coat check and the outdoor smoker's balcony are nearby. Defined by a shimmering brass curtain which separates the Woodward Windows from the rest of the Atrium, this is an ideal location for pre- and post-concert receptions.



Atrium-Level 1

Full area/Inside columns

Dimensions:

W: 42/23' L: 68/42'
2,856/966 Square Feet

Capacity:

Theatre Style:	n/a
Reception/Strolling:	450
Banquet:	125

Atrium-Level 2

*East/West
(In front of Donor Lounge)*

Dimensions:

W: 17/11' L: 69/63'
1,173/693 Square Feet

Capacity:

Theatre Style:	n/a
Reception/Strolling:	200
Banquet:	80

Atrium-Level 3

East/West

Dimensions:

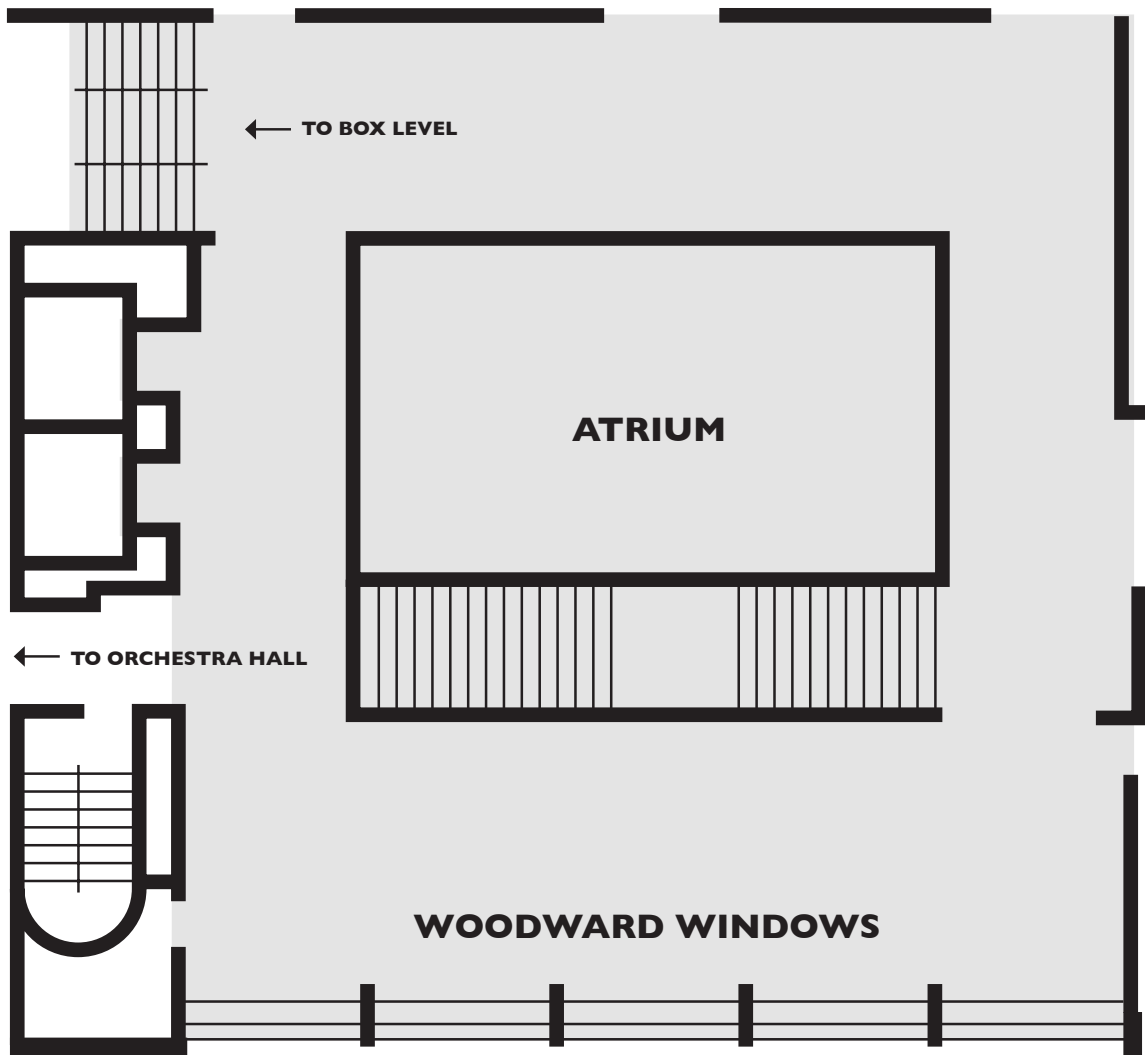
W: 12/16' L: 69/70'
828/1,120 Square Feet

Capacity:

Theatre Style:	n/a
Reception/Strolling:	125
Banquet:	75



ATRIUM AND WOODWARD WINDOWS

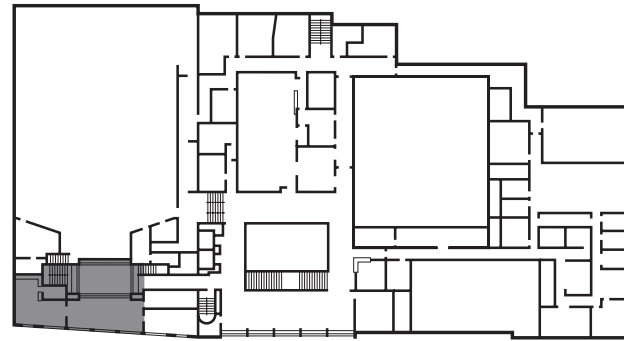


Max M. & Marjorie S.
Fisher Music Center
3711 Woodward Avenue
Detroit, MI 48201-2403

dso.org/rent
313.576.5065

PARADISE LOUNGE

Located in historic Orchestra Hall on the second level, the Paradise Lounge features large windows overlooking Woodward Avenue and the corner of Parsons Street. This area celebrates the "Save Orchestra Hall" movement of the 1970s and 1980s, Detroit's most successful historic preservation crusade. Perfect for receptions of up to 150, or dinners on non-concert nights for up to 75.



Paradise Lounge A

Landing

Dimensions:

W: 21' L: 30'
630 Square Feet

Capacity:

Theatre Style:	25
Reception/Strolling:	50
Banquet:	25

Paradise Lounge B

Dimensions:

W: 15' L: 40'
600 Square Feet

Capacity:

Theatre Style:	50
Reception/Strolling:	75
Banquet:	25

Paradise Lounge C

Corner

Dimensions:

W: 22.3' L: 22.4'
500 Square Feet

Capacity:

Theatre Style:	n/a
Reception/Strolling:	25
Banquet:	25



PARADISE LOUNGE

