

Nut Zoomer



Who Will Benefit from the Nut Zoomer test?

The Nut Zoomer test detects sensitization and immune reactivity to tree nuts.

If you are diagnosed with or suspect food sensitivities or allergies or have a family history of allergies or sensitivities to tree nuts or peanuts, you may benefit from this panel.

Recognizing Symptoms of Tree Nut Sensitivity

Symptoms include:

- Abdominal pain and cramps
- Bloating
- Migraines
- Headaches
- Cough
- Diarrhea
- Nasal congestion or a runny nose
- Nausea
- Irritable bowel
- Hives



Why is This Test Important?

- Tree nuts are considered a highly antigenic food and are one of the 8 major allergens in the US. ¹
- Diagnosis of tree nut sensitivity is difficult due to a delay in symptoms; sensitivity to peptides in tree nuts can present up to 72 hours after consumption.
- Tree nut sensitivities can cause acute symptoms in the intestinal environment, and can also affect the skin, joints, brain, and other internal organs and tissue systems.
- The Vibrant Wellness Nut Zoomer assesses your risk of tree nut sensitivity and allows you to differentiate between nut sensitivities and other common food sensitivities.
- The panel will allow you to understand your body's unique response to tree nuts and work with your provider to create a personalized nutrition and wellness plan to prevent inflammatory reactions and feel better.

The Vibrant Wellness Advantage

Simple testing with robust results. Perform the Nut Zoomer panel in the comfort of your home.

Unparalleled specificity and sensitivity. Our proprietary technology detects:

- Tree nut sensitivity with a 95-100% accuracy
- IgA and IgG antibodies
- Immune reactivity to tree nut peptides

Validated and accredited. Science-backed testing and analysis based on rigorous, ongoing research by clinical experts.

What to Expect from the Test

1. Follow our simple instructions to perform this test either at home or at a blood draw center.
2. Before testing:
 - You do not need to fast before your Nut Zoomer test.
 - There are no diet or dietary supplement restrictions required before testing. We recommend consuming your “normal” diet before testing – meaning we don’t recommend excluding specific foods (such as tree nuts) from your diet before testing, as this could affect results.
 - Your provider may ask you to discontinue medications or dietary supplements. Speak with your provider to learn more.
3. Send the test to our labs for analysis and work with your care provider to understand the results.

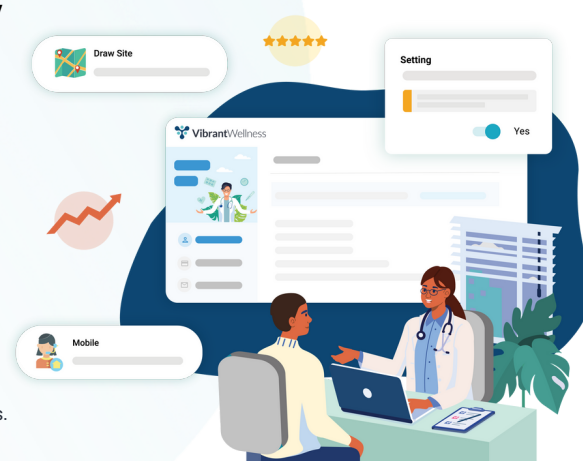
About Vibrant Wellness

Vibrant Wellness is a leading CLIA-certified and CAP-accredited biotech company based in San Carlos, CA. We deliver life-transforming lab testing that enables health and wellness providers to discover the root of patient health issues.

We're at the forefront of modern medicine and research, providing personalized health analytics using cutting-edge, high-quality technology. We believe that anyone can achieve better health and vibrant longevity through individualized solutions based on testing—not guessing.

References:

1. <https://www.aaaai.org/tools-for-the-public/conditions-library/allergies/everything-you-need-to-know-about-tree-nut-allergy#:~:text=Tree%20nut%20allergy%20is%20one,underground%20and%20are%20considered%20legumes.>



Regulatory Statement

The general wellness test intended uses relate to sustaining or offering general improvement to functions associated with a general state of health while making reference to diseases or conditions. This test has been laboratory developed and its performance characteristics determined by Vibrant America LLC and Vibrant Wellness, CLIA-certified and CAP-accredited laboratory performing the test. The test has not been cleared or approved by the U.S. Food and Drug Administration (FDA). Although FDA does not currently clear or approve laboratory-developed tests in the U.S., certification of the laboratory is required under CLIA to ensure the quality and validity of the tests.