

NEW C335 & C335v

# SUPERIOR

EXTERIOR & INTERIOR





THE NEW C335 AND THE NEW C335v.  
POWERED BY INBOARD OR OUTBOARD.  
THE CHOICE IS YOURS!

enjoy the  
**LIGHT**

feel the  
**SPACE**

combine functionality with  
**DESIGN**

All Sealine yachts are born of the same values: They feature wide interior spaces, an amazing quantity of natural light and outstanding design paired with German engineering. As for these trademarks, the C335 and the C335v displays the true spirit of Sealine.



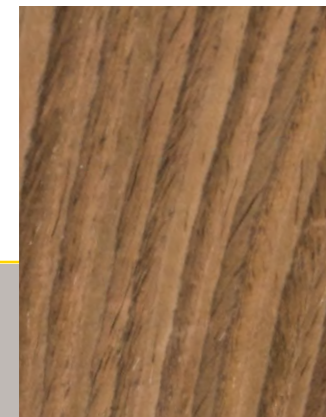


## TIME FOR A NEW SENSE OF ELEGANCE

With the new C335 and C335v motor yachts, Sealine demonstrates how much luxury is possible in the 33-foot class. High-quality materials are used more extensively than ever before. The sophisticated design concept creates room for even more comfort and freedom. Outside and inside.

### A masterpiece: the saloon.

- | **Inside feels like outside.** The saloon has a side door to starboard and a window to port. The glass wall to the cockpit can be opened completely.
- | **Light or shade as desired.** When the electric sunroof is retracted, almost the entire saloon is open air.
- | **Exquisite fabrics and woods define the new style.** They delight eyes and hands from the galley to the sofa. An even greater variety is now available.



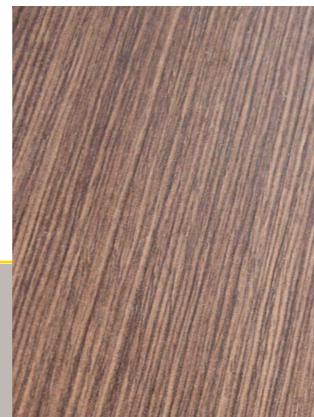
ATLANTA WALNUT



SHERWOOD CHESTNUT



ONTARIO OAK



MADISON WOOD







## ENJOY DRIVING TO THE MAX

The next-generation helm design is consistently minimal. The ergonomically arranged instruments are intuitive to use. Combined with unobstructed all-round visibility, you can expect a driving experience like none other.

- | **Sporty. Clear. Stylish.** High-resolution displays provide all the information you need at a glance.
- | **Folding driver's seat.** Some moments are too exciting to remain seated, so you can also helm on your feet.
- | **Adjustable co-pilot seat.** By turning the backrest, the passenger bench becomes part of the seating area.





## A FIVE-STAR HOME: THE MASTER CABIN

Welcome to the owner's cabin, with its modern luxury and first-class comfort. Subtle colours and high-end materials are the key to its aesthetic style.

- | **Sunlight from 4 directions.** 3 hull windows, 1 front window and 3 skylights provide a bright, natural atmosphere.
- | **Ambient lighting.** Indirect, soft light brings out the interior design after sunset.
- | **Generous space.** A large mirrored wardrobe and shelves next to the island bed provide plenty of storage space.





The VIP cabin more than lives up to its name. With a king-size double bed, sunlight from two hull windows and Sealine's new interior design, it contains everything you need to feel at home.

A rarity in the 33-foot class, the generously equipped bathroom offers a separate shower cubicle and impresses with the elegant use of fine woods.





## SEALINE C335

## STYLE FROM BOW TO STERN

## SEALINE C335v



### LARGE BATHING PLATFORM

Dive, swim, sunbathe: The Sealine C335 features an extra-large bathing platform with a hydraulic lowering mechanism.

### TWO GENEROUS SUN LOUNGES

Sunbathing for all your guests. In addition to the sunbed at the fore, the cockpit table can be transformed into a comfortable lounge.

### TWO OPENING ROOF SECTIONS

Maximum versatility and comfort for the guests. Shade and sun where you need them.

### DYNAMIC HULL DESIGN

The sculptured hull provides excellent performance whilst giving light and space to the interior.

### STARBOARD SLIDING DOOR

Step out through the almost invisible glass door on the starboard side to walk on the bow area.

### BIFOLD DOOR & TILTING WINDOW

The Sealine C335v offers a voluminous storage space below the cockpit seating which has room for large water sports gear or bicycles for the entire crew.





## STYLISH LOUNGING, FINE FOODS, SUNNY DAYS

The Sealine C335 and C335v are remarkably flexible all-weather yachts that are perfectly suited for outdoor living. Extensively equipped for a summer lifestyle, as well as moments when the weather doesn't play along.

- | **Convertible cockpit:** transform the table and bench into a sun lounger.
- | **The sun pad at the bow** has an extra-large sunbathing area for the whole crew.
- | **Sliding side door at the helm** gives an additional connection between bow and cockpit.
- | **Fold-out bar between galley and cockpit** – pure beach club atmosphere.



## C335

### INBOARDS UP TO 440HP AND 31 KNOTS

Choose your engines: 1 x Volvo Penta D6-340,  
2 x D3-220 or 1 x D6-400. Both of the stronger  
configurations achieve a max. speed of 31knots.



## BORN TO PERFORM

## C335v

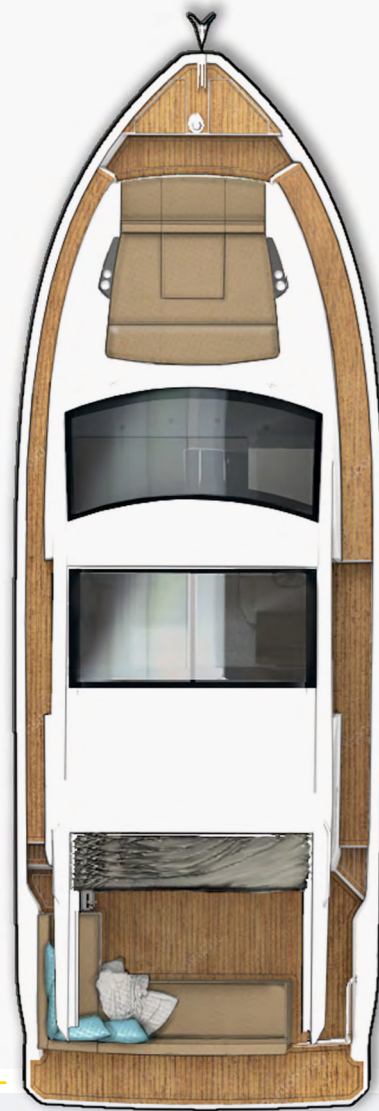
### OUTBOARDS UP TO 600HP AND 40 KNOTS

Because outboards release all their power in the exact  
direction you steer, they are very agile and great fun  
to drive. They also provide extra room for large items  
of water sports gear beneath the cockpit table.





C335



MAIN DECK ROOF  
standard

C335v



MAIN DECK ROOF  
standard

PRINCIPAL DIMENSIONS according to ISO 8666

	C335		C335v	
Length Overall (LOA)	10.31m	33' 10"	10.31m	33' 10"
Length of Hull (LH)	9.99m	32' 9"	10.07m	33' 0"
Beam (BH)	3.50m	11' 6"	3.50m	11' 6"
Draught (Tmax)	1.03m	3' 5"	0.89m	2' 11"
Air Height	3.42m	11' 3"	3.48m	11' 5"
Fuel capacity	570lt	125 Imp. gal	570lt	125 Imp. gal
Water capacity	220lt	48 Imp. gal	220lt	48 Imp. gal
Displacement	6.67t	14,705lb	7.27t	16,028lb
Max. persons		8		8
CE Category		B		B

C335 ENGINE

STANDARD

1 x Volvo Penta D6-340 25/26 knots\*

OPTIONS

2 x Volvo Penta D3-220 30/31 knots\*

1 x Volvo Penta D6-400 30/31 knots\*

C335v ENGINE options

Max. outboard 2x300hp/40 knots\*

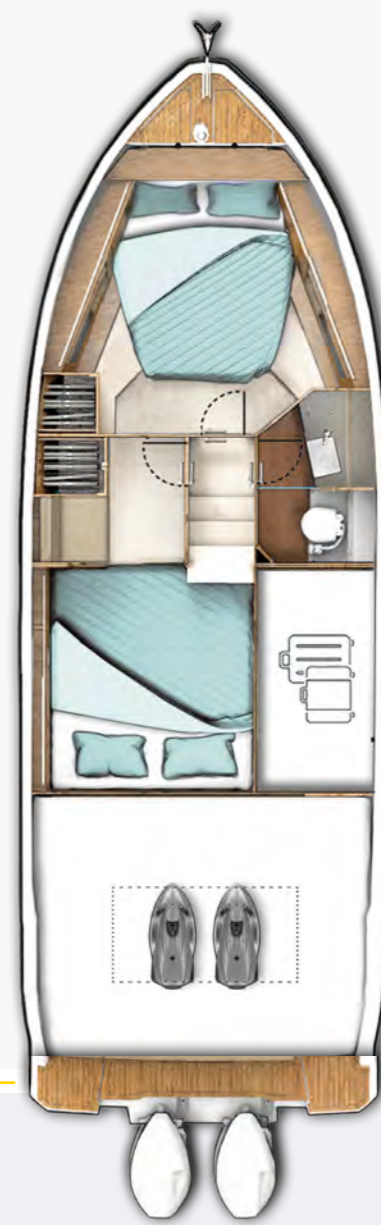
Your dealer will advise you



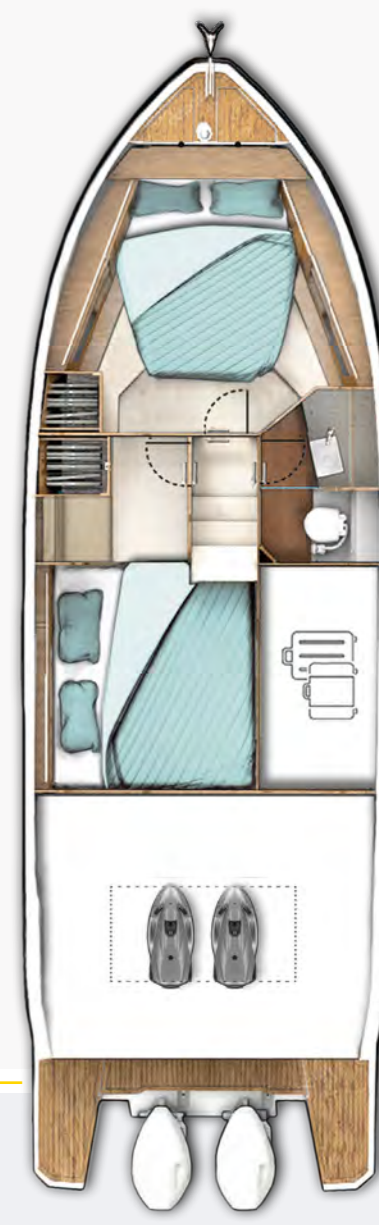
MAIN DECK option  
with fixed cockpit table and  
extended bathing platform



MAIN DECK option  
with cockpit table to be  
transformed into sunpad and  
extended bathing platform



LOWER DECK standard



LOWER DECK option  
with extended bathing  
platform

\*All performance figures are given in good faith and are intended as an indication. These figures cannot be guaranteed as top speed in particular is affected by the cleanliness of the hull, conditions of the propellers, weight carried and air/sea temperature. Performance is related also to the optional accessories selected SEALINE reserves the right to change specifications in line with the company policy of improvement through research and development. Standard Propeller tested in Greifswald according to Volvo conditions. All measurements/figures approximate. Errors and omissions excepted. Specification and material can be changed without notice. Please check with your dealer for a full list of inclusions.



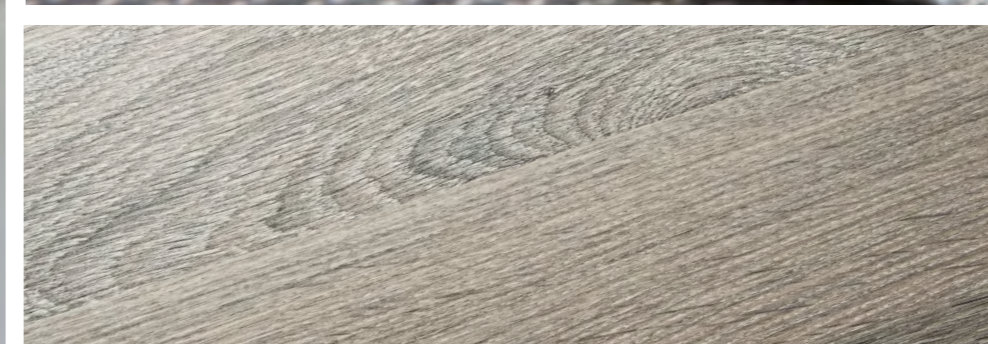
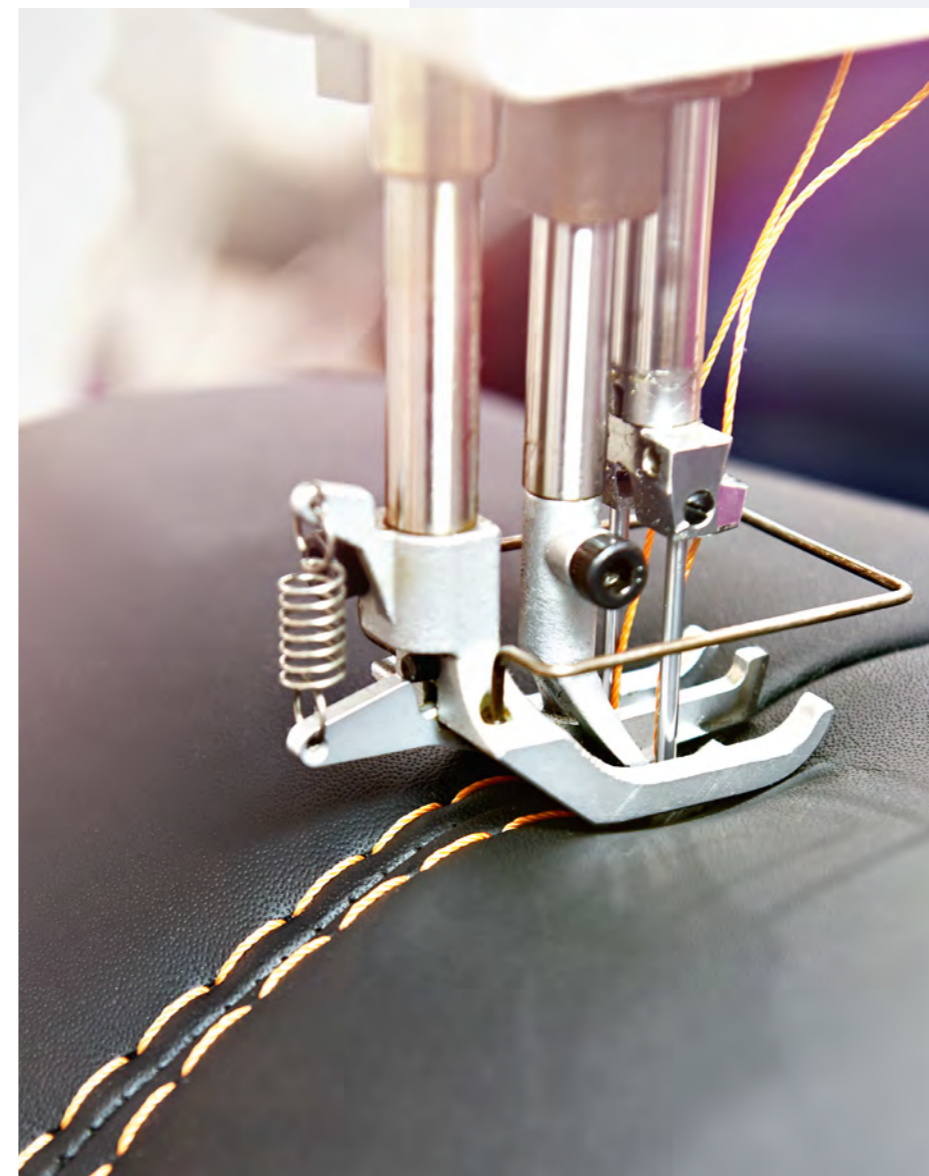


## GUIDED BY EXCELLENCE CREATED BY MASTERS

A Sealine yacht is developed by the best designers with the best technology. In virtual 3D space, they bring aesthetics, layout, equipment and sailing performance into perfect balance. Even the effect of light and material can be visualised in photo-realistic detail. This creates the uniquely harmonious interiors for which Sealine is appreciated worldwide.

## EACH SEALINE IS ONE OF A KIND

With your personal selection of colours and textures, you transform your Sealine into a unique expression. Five teak variants are available for the deck alone. We also offer special materials for cockpit seats and sun cushions. For the interior you can choose between different furniture woods, upholstery and curtains, while underfoot, select from wood or carpet.





THE NEW SEALINE C335 & C335v

WELCOME ON BOARD





CRUISER SERIES



C335



C390



C430



C530

FLYBRIDGE SERIES



F430



F530

OUTBOARD V-SERIES



S330v



C335v



C390v

SPORT SERIES



S330



S430



[www.sealine.com](http://www.sealine.com)

Sealine Ladebower Chaussee 11 D-17493 Greifswald