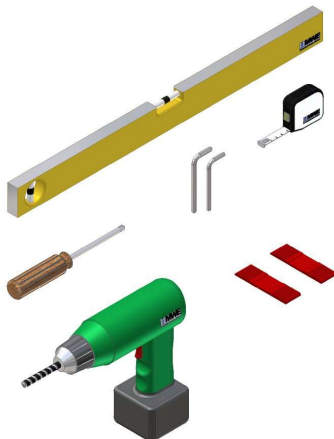
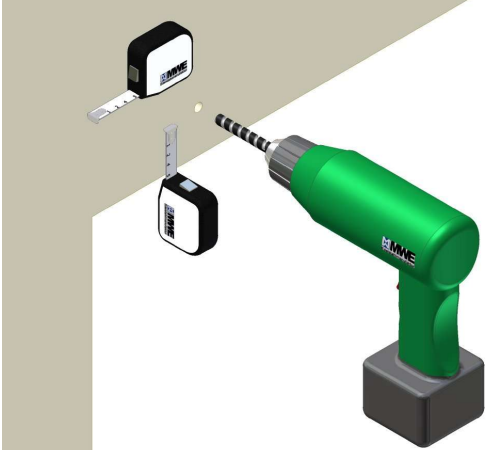
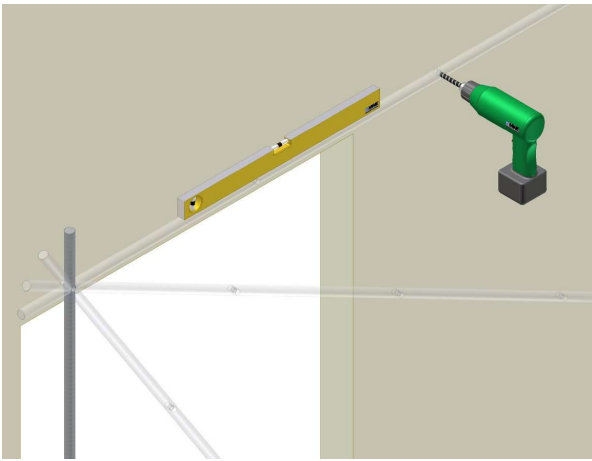


Installation Instruction

System Duplex (ST.1007.DU)

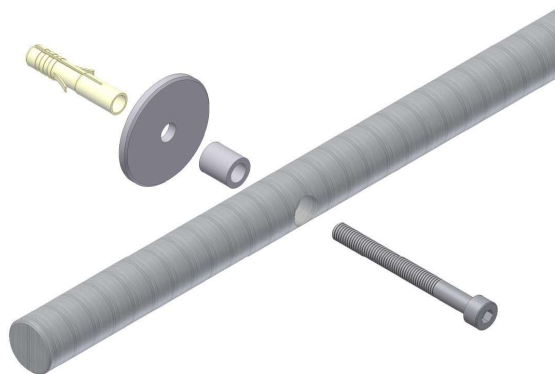
Am Steinbusch 7
D - 48351 Everswinkel
Tel.: +49(0)2582-9960- 0
Tel.: +49(0)2582-9960-128
Internet: www.mwe.de

	<h2>Tools</h2> <ul style="list-style-type: none">- water level- measuring tape- power drill- drill (diameter 8 mm; diameter 10 mm)- crosstip screwdriver- allen key set- jaw wrench (size: 10 mm)- glass shims <p>Please read power drill safety instructions carefully before installation.</p>
	<h2>1</h2> <h3>First Wall Hole</h3> <p>Before drilling the first wall drilling, please determine the highest point from the top edge-finished floor level by using the water level. The height of the center of rail and the sidwise clearance are to be marked at this point in accordance with your planning instructions. The first wall drilling can be made now.</p>
	<h2>2</h2> <h3>Further Wall Holes</h3> <p>Mount loosely outer wall fasteners for runner rail (see step 3). Adjust runner rail into horizontal position using water level. Use runner rail as your "drilling template" to drill all necessary fastening holes with 8 mm drill. Use 10 mm drill to widen holes for anchors.</p>

Installation Instruction

System Duplex (ST.1007.DU)

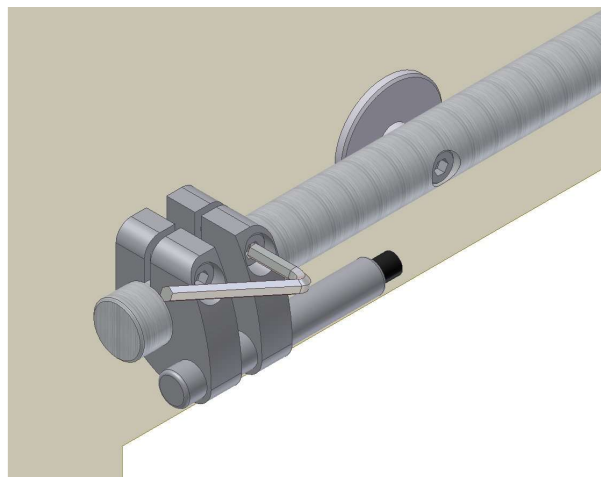
Am Steinbusch 7
D - 48351 Everswinkel
Tel.: +49(0)2582-9960- 0
Tel.: +49(0)2582-9960-128
Internet: www.mwe.de



3

Wall mounting the rail

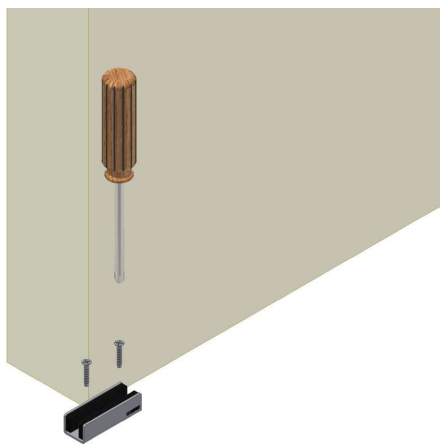
Assemble the rail to wall by using MWE mounting material.



4

Mounting the stoppers

Secure door stoppers on the left and on the right side of runner rail in a way that will prevent the sliding door from rolling off the rail.



5

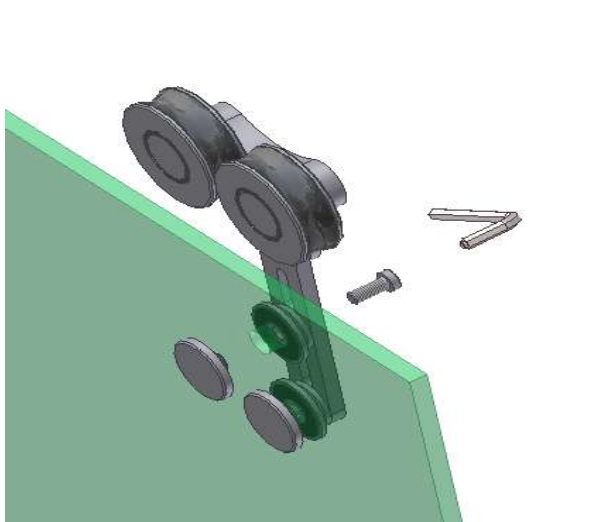
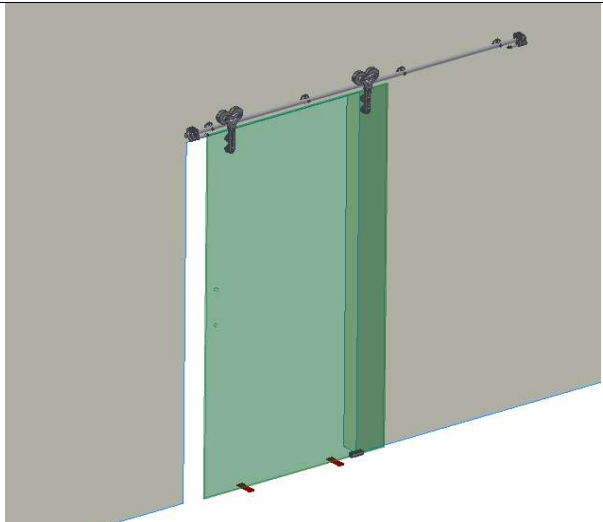
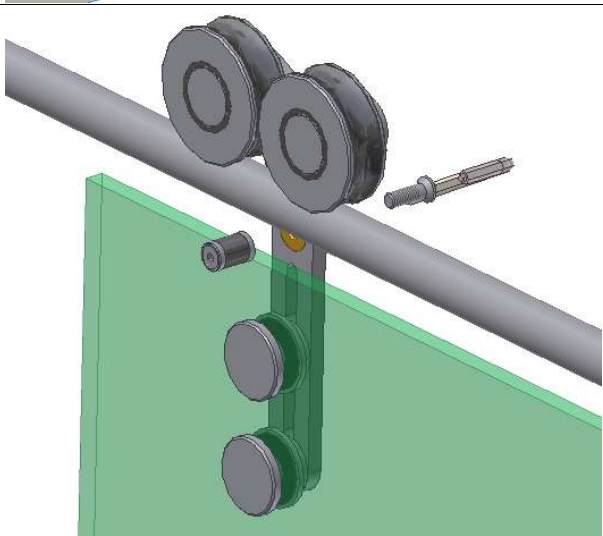
Mounting the floor guide

Install floor guide according to your planning detail using MWE installation material. Door leaf must run in a parallel line to wall in given distance.

Installation Instruction

System Duplex (ST.1007.DU)

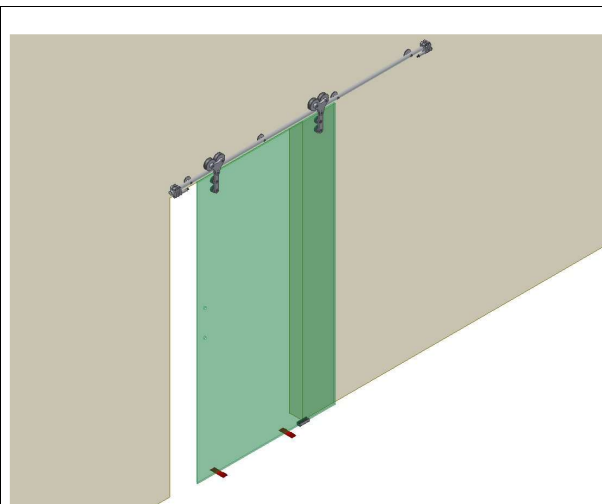
Am Steinbusch 7
D - 48351 Everswinkel
Tel.: +49(0)2582-9960- 0
Tel.: +49(0)2582-9960-128
Internet: www.mwe.de

	<p>6 Assembling the carriages</p> <p>Put the door leaf on mounting rests with the hardware facing upwards. Disassemble the carriage, security bolt and glass mounts. Attention: the screw joint security bolt and carriage pivot joint constitute one unit. Put the washers for the glass fastenings on the glass drillings. Apply roller shank including mounting bolts and secure from the opposite side by using the glass fastening caps. Attention: Do not lose plastic bushings for the glass mounts.</p>
	<p>7 Hinging the door leaf</p> <p>Hang preassembled sliding door on the rail. For safety reasons and for adjustment of floor clearance (7 mm) put the glass shims on the floor underneath the door leaf. Pay your attention to the preassembled floor guide! Glass shims are to be removed afterwards.</p>
	<p>8 Mounting the safety bolt</p> <p>Reassemble safety bolt to the carriage using jaw wrench (10 mm). Attention: safety bolt must not scratch runner rail!</p>

Installation Instruction

System Duplex (ST.1007.DU)

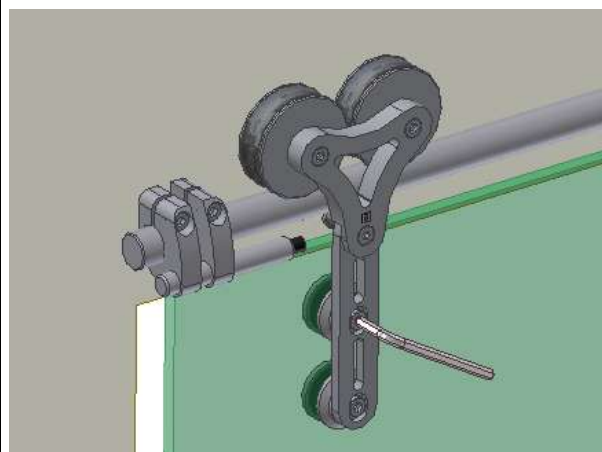
Am Steinbusch 7
D - 48351 Everswinkel
Tel.: +49(0)2582-9960- 0
Tel.: +49(0)2582-9960-128
Internet: www.mwe.de



9

Final control of the sliding door

Control smooth moving of the sliding door and function of final door stops. Adjust door stops if necessary. Secure stopper bolts tightly! Install door handles or door knobs, respectively.



10

Tightening the bolts

After completion of installation make sure that every single bolt is once again securely tightened!