

Bring Out the Festal Bread



Bring out the fes - tal bread, and sing songs of free - dom.



Shout with the slaves who fled, and sing songs of free - dom.



1. What mod - ern phar - aohs live in ar - ro - gance
 2. Chains still there are to break; their days are not
 3. Still does re - sent - ment bind each broth - er and
 4. Long be our journ - ey - ing, yet just



crown - éd? Who shall be
 fin - - ished. Met - al or
 sis - - ter. Still do the



sent to chal - lenge fol - ly un - bound - ed?
 sub - tle - made they're still not di - min - ished.
 plagues af - fect us red as the riv - er.

Bring Out the Festal Bread



Bring out the fes - tal bread, and sing songs of free - dom.



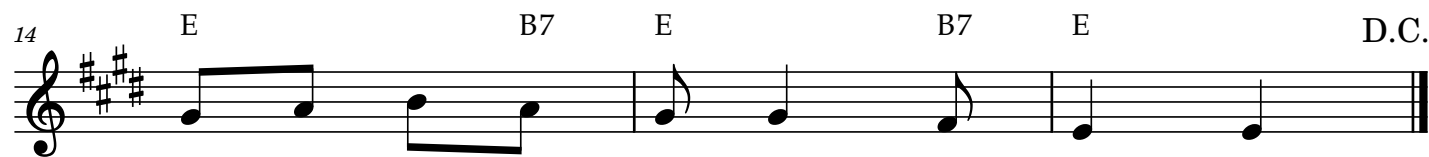
Shout with the slaves who fled, and sing songs of free - dom.



1. What mod - ern phar - aohs live in ar - ro - gance
 2. Chains still there are to break; their days are not
 3. Still does re - sent - ment bind each broth - er and
 4. Long be our journ - ey - ing, yet just



crown - é d? Who shall be
 fin - ished. Met - al or
 sis - ter. Still do the



sent to chal - lenge fol - ly un - bound - ed?
 sub - tle - made they're still not di - min - ished.
 plagues af - fect us red as the riv - er.

Bring Out the Festal Bread



Bring out the fes - tal bread, and sing songs of free - dom.



Shout with the slaves who fled, and sing songs of free - dom.



1. What mod - ern phar - aohs live in ar - ro - gance
 2. Chains still there are to break; their days are not
 3. Still does re - sent - ment bind each broth - er and
 4. Long be our journ - ey - ing, yet just



crown - - éd? Who shall be
 fin - - ished. Met - al or
 sis - - - ter. Still do the



sent to chal - lenge fol - ly un - bound - ed?
 sub - tle - made they're still not di - min - ished.
 plagues af - fect us red as the riv - er.

Bring Out the Festal Bread

Bm F#7 Bm F#7 Bm F#7 Bm

Bring out the fes - tal bread, and sing songs of free - dom.

5 Bm F#7 Em7 D G#ø7 A#dim/B Bm Fine

Shout with the slaves who fled, and sing songs of free - dom.

9 D A7 D G D A7

1. What mod - ern phar - ahs live in ar - ro - gance
 2. Chains still there are to break; their days are not
 3. Still does re - sent - ment bind each broth - er and
 4. Long be our journ - ey - ing, yet just

12 D Bm D A7

crown - éd? Who shall be
 fin - ished. Met - al or
 sis - ter. Still do the

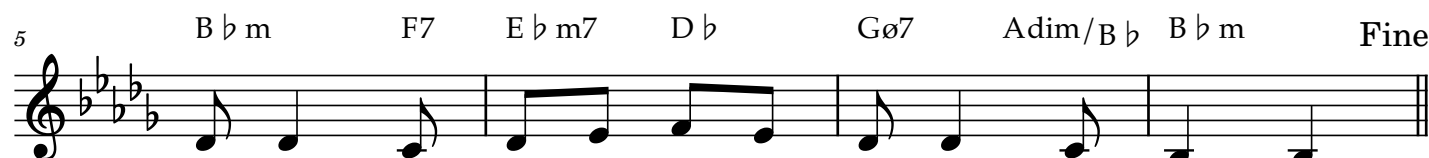
14 D A7 D A7 D D.C.

sent to chal - lenge fol - ly un - bound - ed?
 sub - tle - made they're still not di - min - ished.
 plagues af - fect us red as the riv - er.

Bring Out the Festal Bread



Bring out the fes - tal bread, and sing songs of free - dom.



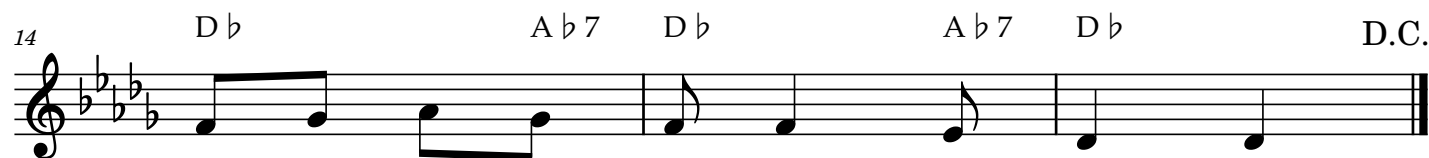
Shout with the slaves who fled, and sing songs of free - dom.



1. What mod - ern phar - aohs live in ar - ro - gance
 2. Chains still there are to break; their days are not
 3. Still does re - sent - ment bind each broth - er and
 4. Long be our journ - ey - ing, yet just

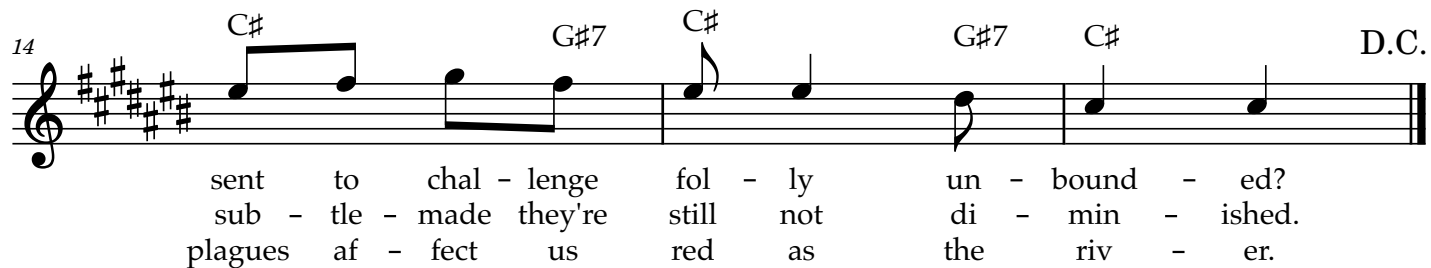
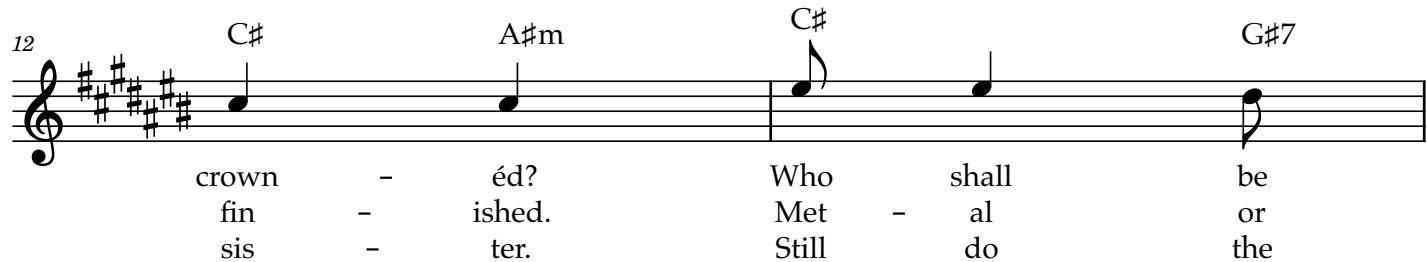
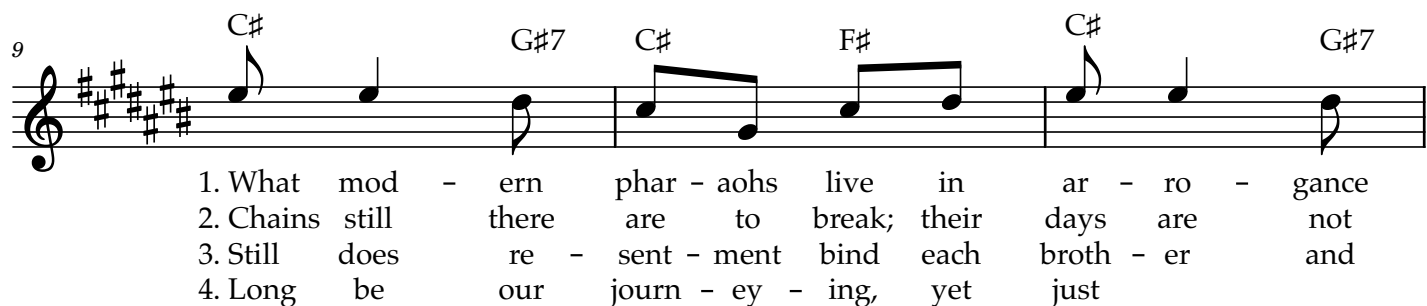
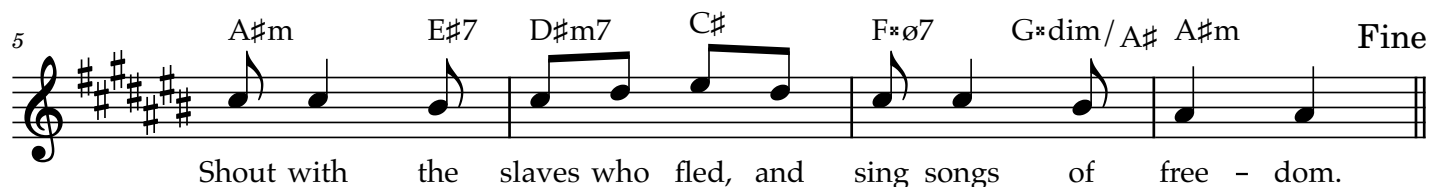


crown - é d? Who shall be
 fin - ished. Met - al or
 sis - ter. Still do the

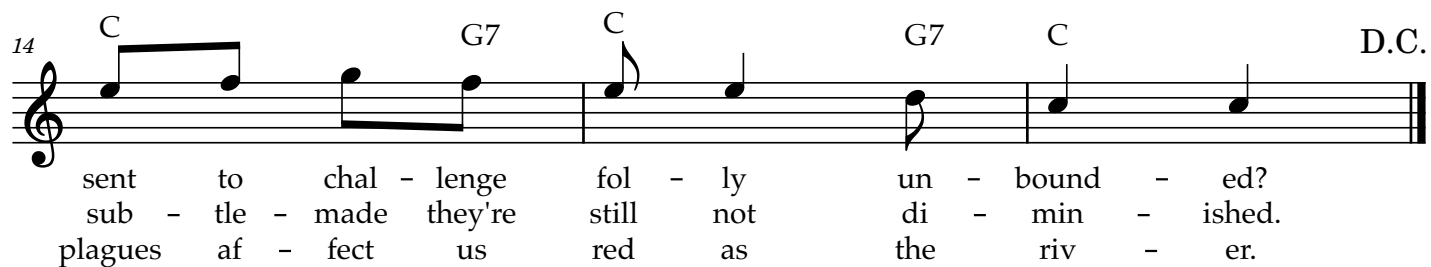
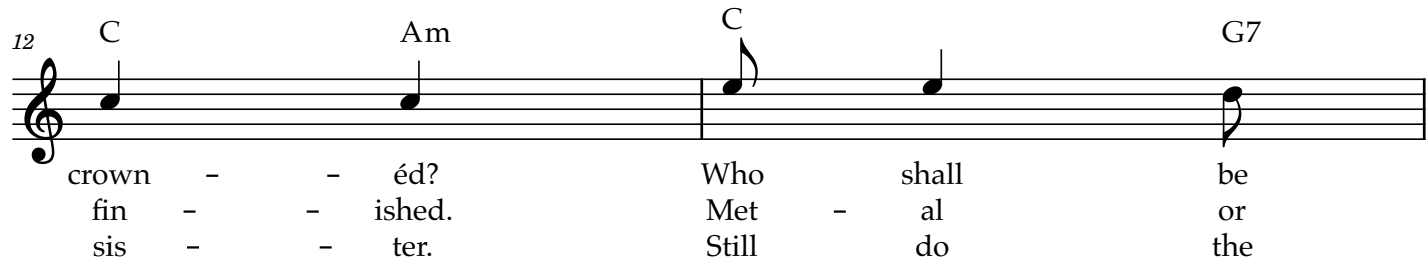
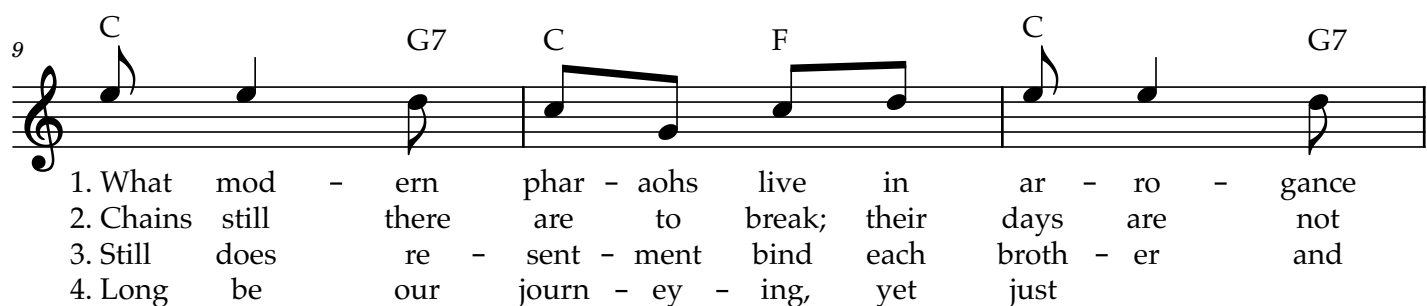
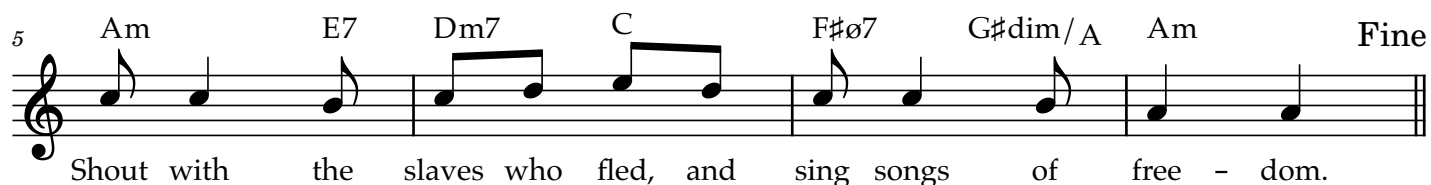


sent to chal - lenge fol - ly un - bound - ed?
 sub - tle - made they're still not di - min - ished.
 plagues af - fect us red as the riv - er.

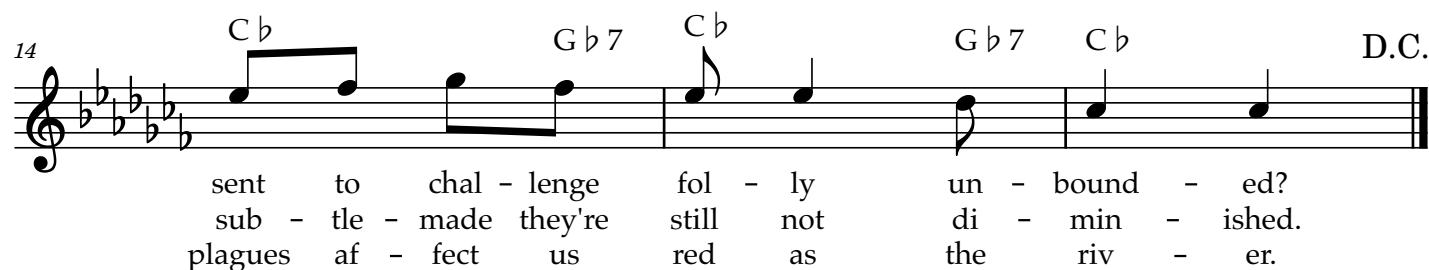
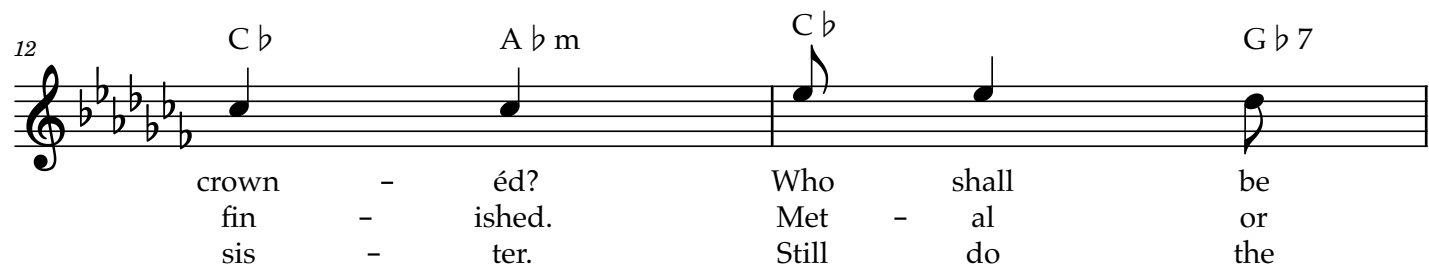
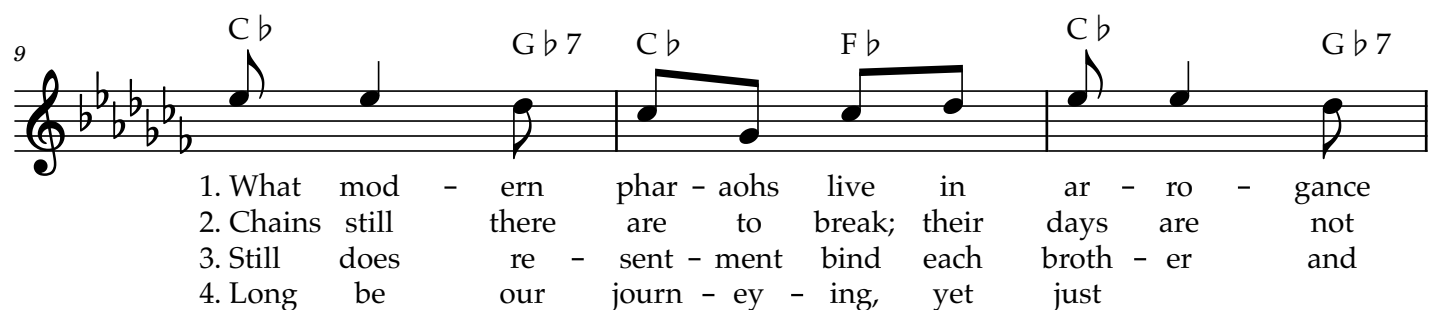
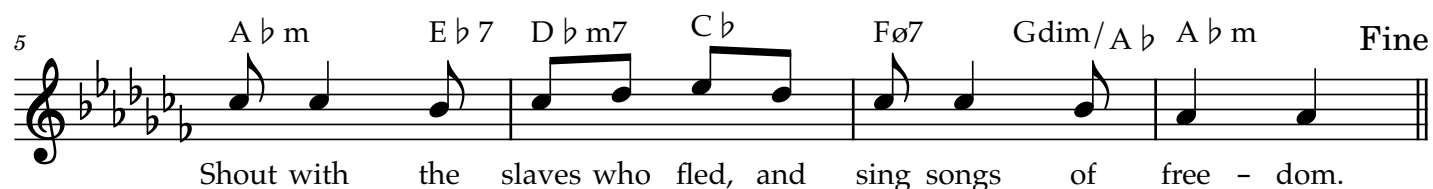
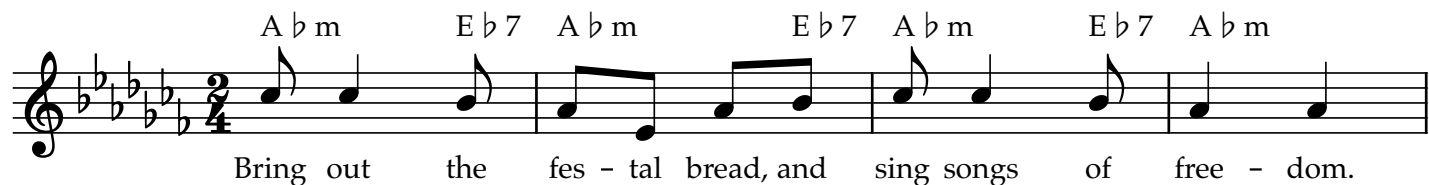
Bring Out the Festal Bread



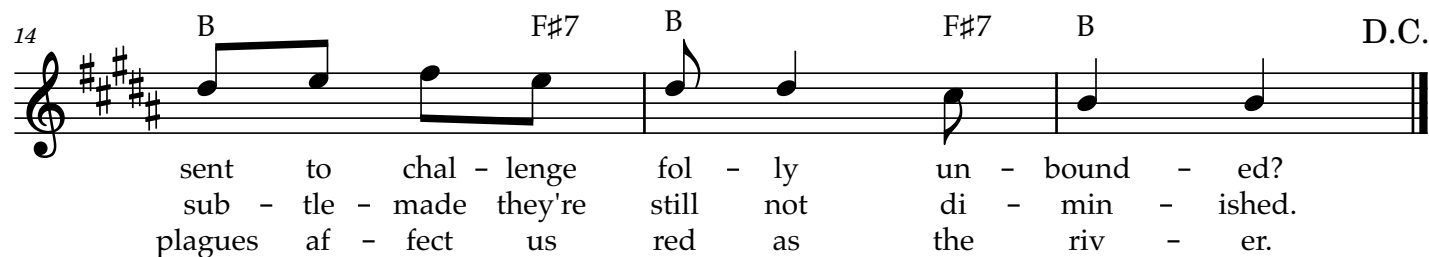
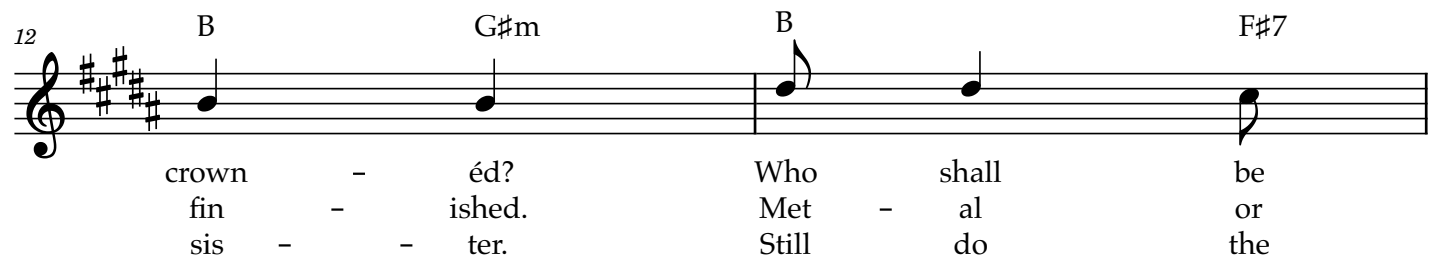
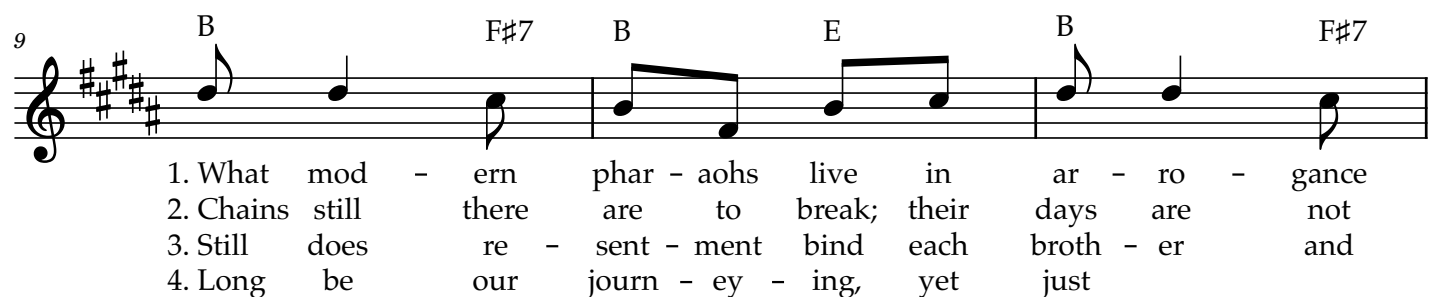
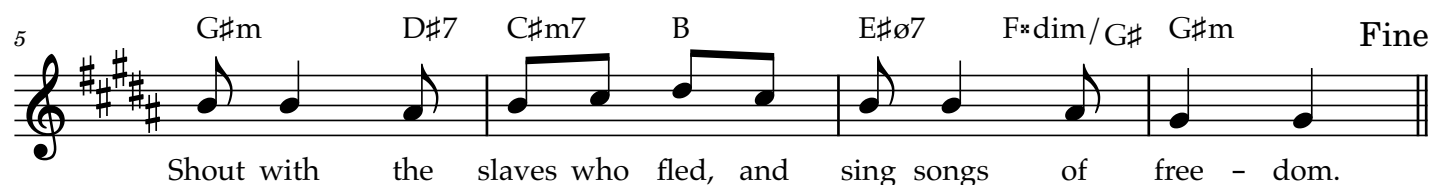
Bring Out the Festal Bread



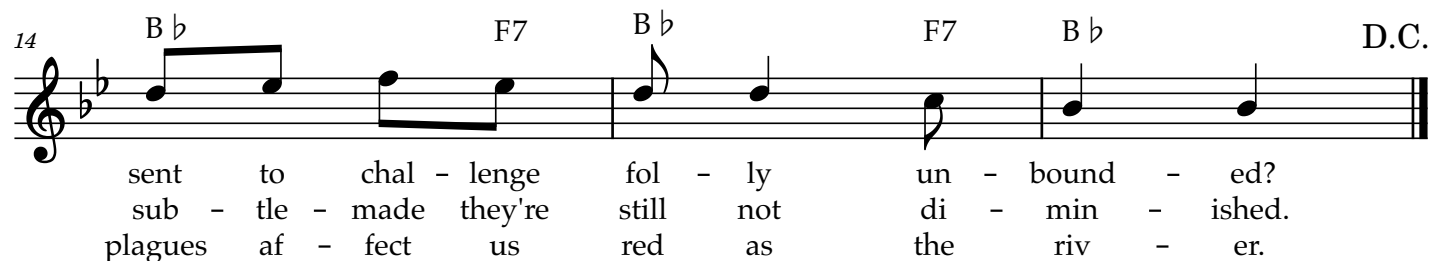
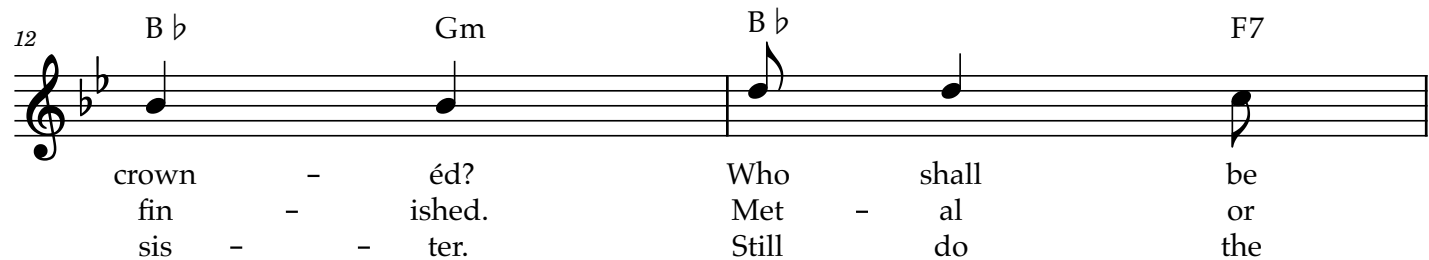
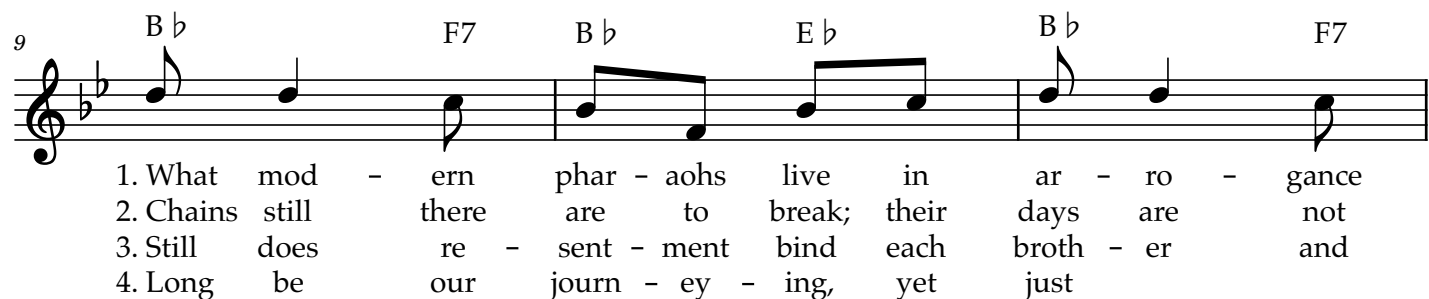
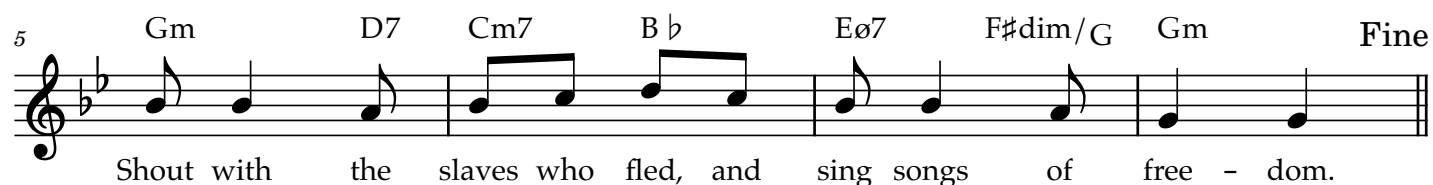
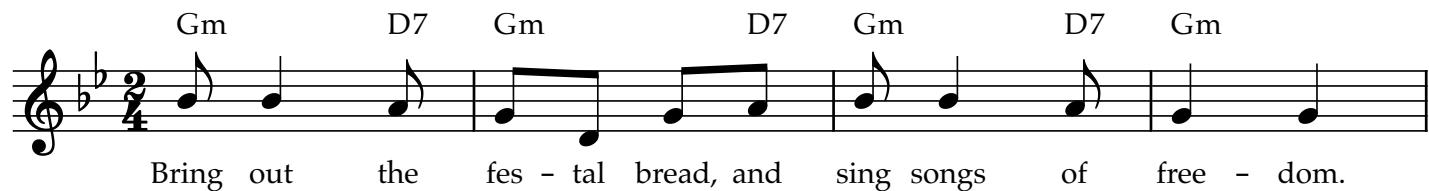
Bring Out the Festal Bread



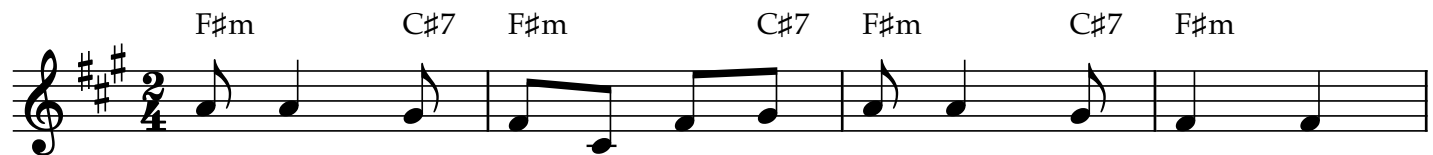
Bring Out the Festal Bread



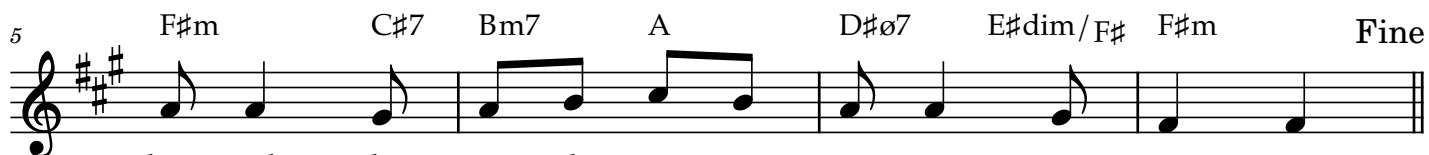
Bring Out the Festal Bread



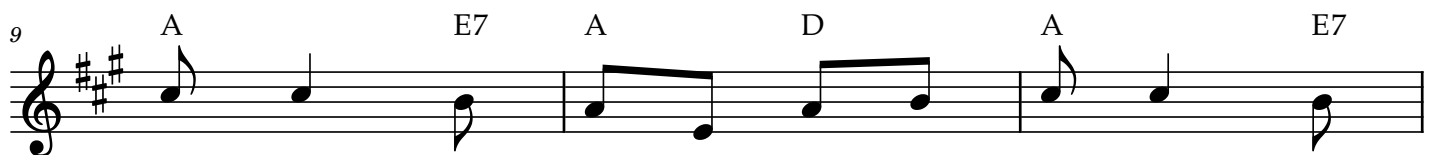
Bring Out the Festal Bread



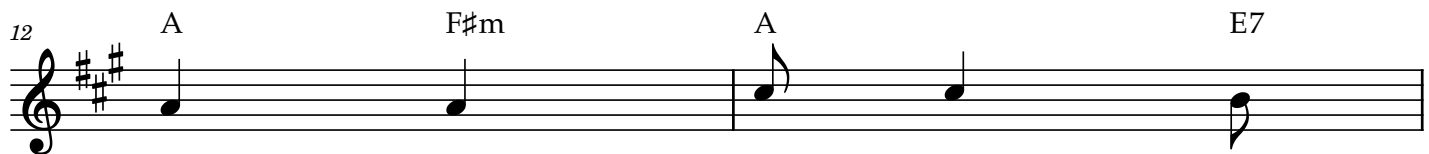
Bring out the fes - tal bread, and sing songs of free - dom.



Shout with the slaves who fled, and sing songs of free - dom.



1. What mod - ern phar - aohs live in ar - ro - gance
 2. Chains still there are to break; their days are not
 3. Still does re - sent - ment bind each broth - er and
 4. Long be our journ - ey - ing, yet just



crown - éd? Who shall be
 fin - ished. Met - al or
 sis - ter. Still do the

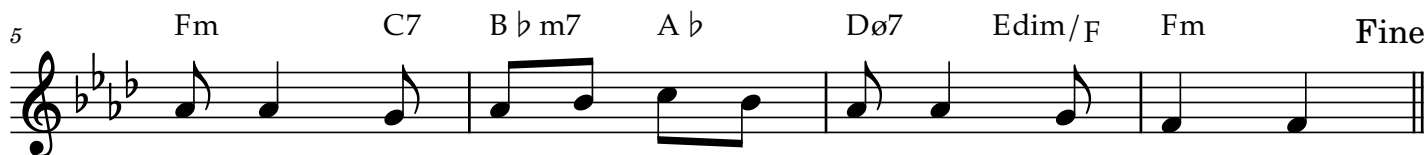


sent to chal - lenge fol - ly un - bound - ed?
 sub - tle - made they're still not di - min - ished.
 plagues af - fect us red as the riv - er.

Bring Out the Festal Bread



Bring out the fes - tal bread, and sing songs of free - dom.



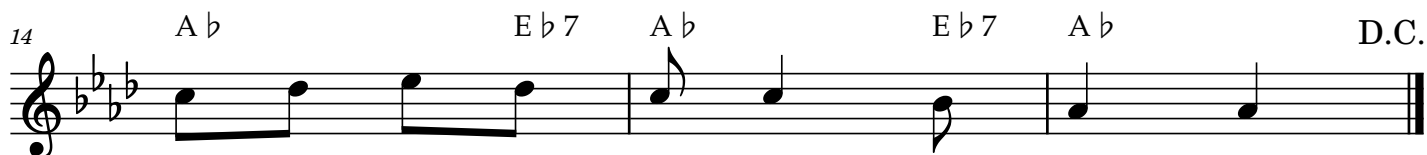
Shout with the slaves who fled, and sing songs of free - dom.



1. What mod - ern phar - aohs live in ar - ro - gance
 2. Chains still there are to break; their days are not
 3. Still does re - sent - ment bind each broth - er and
 4. Long be our journ - ey - ing, yet just

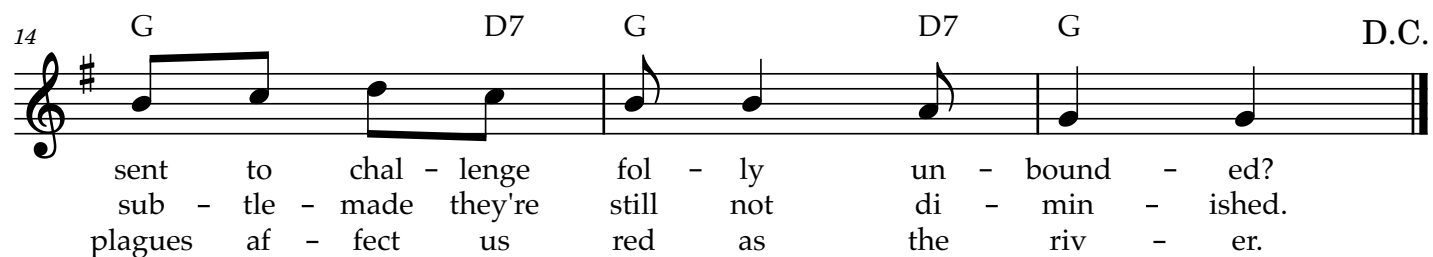
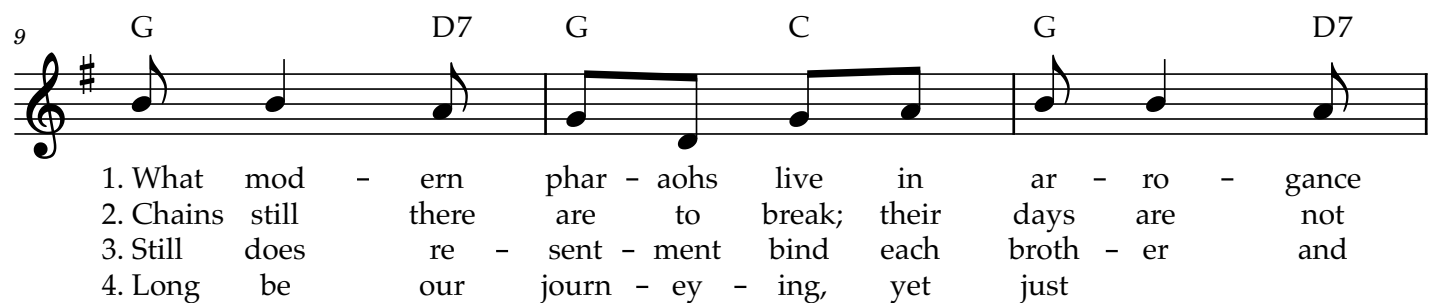


crown - é? Who shall be
 fin - ished. Met - al or
 sis - ter. Still do the



sent to chal - lenge fol - ly un - bound - ed?
 sub - tle - made they're still not di - min - ished.
 plagues af - fect us red as the riv - er.

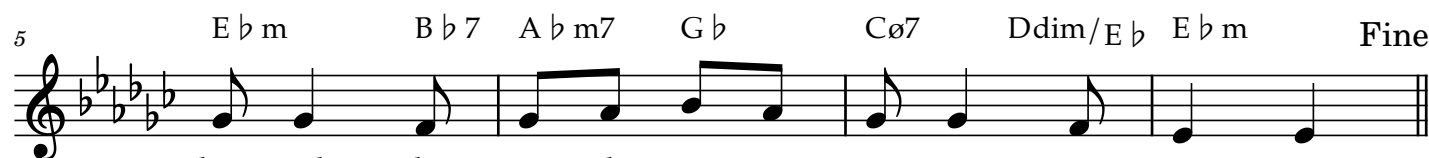
Bring Out the Festal Bread



Bring Out the Festal Bread



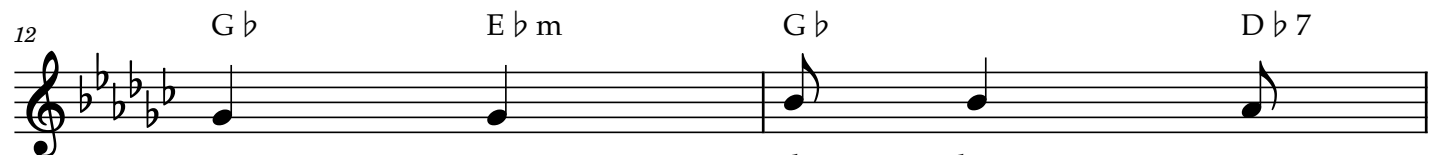
Bring out the fes - tal bread, and sing songs of free - dom.



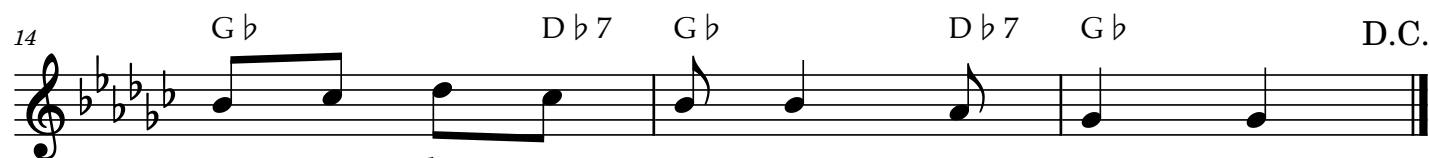
Shout with the slaves who fled, and sing songs of free - dom.



1. What mod - ern phar - aohs live in ar - ro - gance
 2. Chains still there are to break; their days are not
 3. Still does re - sent - ment bind each broth - er and
 4. Long be our journ - ey - ing, yet just



crown - é d? Who shall be
 fin - ished. Met - al or
 sis - ter. Still do the



sent to chal - lenge fol - ly un - bound - ed?
 sub - tle - made they're still not di - min - ished.
 plagues af - fect us red as the riv - er.

Bring Out the Festal Bread



Bring out the fes - tal bread, and sing songs of free - dom.



Shout with the slaves who fled, and sing songs of free - dom.



1. What mod - ern phar - aohs live in ar - ro - gance
 2. Chains still there are to break; their days are not
 3. Still does re - sent - ment bind each broth - er and
 4. Long be our journ - ey - ing, yet just



crown - éd? Who shall be
 fin - ished. Met - al or
 sis - ter. Still do the



sent to chal - lenge fol - ly un - bound - ed?
 sub - tle - made they're still not di - min - ished.
 plagues af - fect us red as the riv - er.