

As We Carry This Flame Forward



1. As we_ car-ry this flame for - ward, we hold_ true to what we know.
 2. As we_ car-ry this flame for - ward, hand in_ hand, we heed the call
 3. As we_ car-ry this flame for - ward, it goes_ with us as a light.



As we_ car-ry this flame for - ward, we leave space for us to grow.
 to do_ jus-tice, kind-ness, mer-cy, eq - ui - ty, and peace to all.
 As we_ car-ry this flame to - ward a new world, our fu - ture's bright.



This flame rep - re - sents a_ place where all are val - ued, all be - long.
 This flame rep - re - sents a_ peo - ple found in ev - ery faith and_ creed.
 This flame rep - re - sents a_ prom - ise, one we make with the Di - vine.



With this flame we speak to_ pow-er, with this_ flame, we join in song.
 Peo-ple who com-mit to_ serv-ing all their neigh-bors, and their needs.
 A new world we are cre - a - ting, we can_ make to - mor - row shine!

Arrangement Permissions



One-time Adaptation



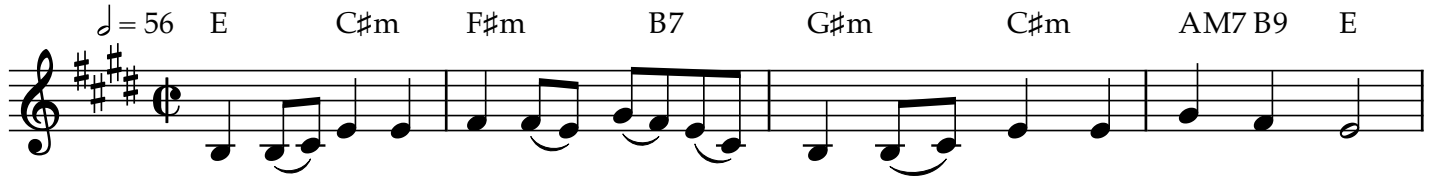
New Arrangement OK



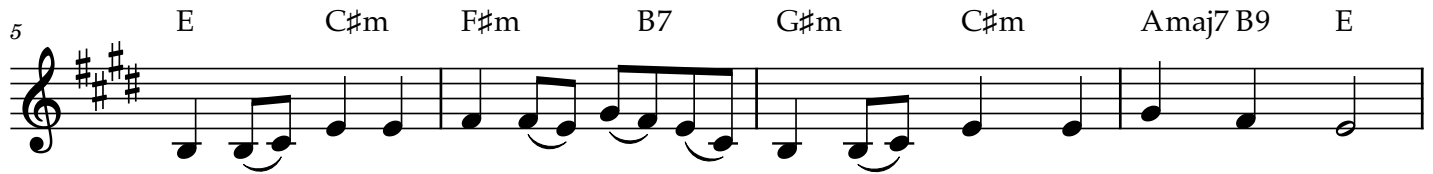
Seek permission to arrange

Look at the *Sing Out Love* "Permissions"
 section for further explanation

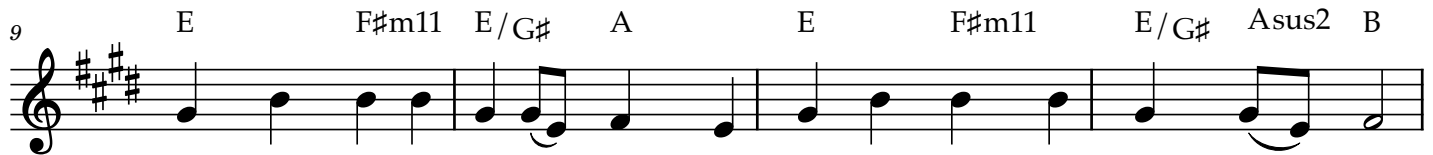
As We Carry This Flame Forward



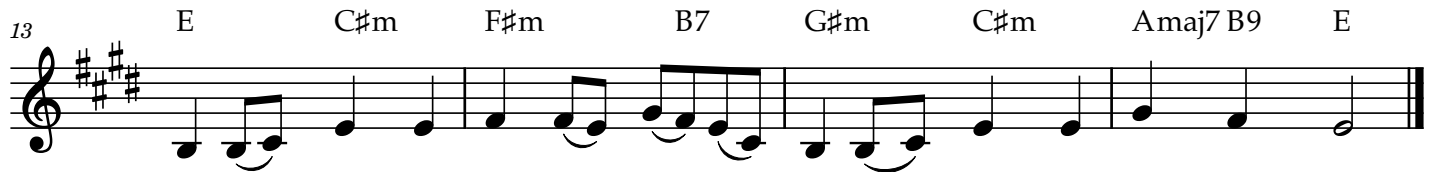
1. As we_car-ry this flame for - ward, we hold_ true to what we know.
 2. As we_car-ry this flame for - ward, hand in__ hand, we heed the call
 3. As we_car-ry this flame for - ward, it goes_ with us as a light.



As we_ car-ry this flame for - ward, we leave space for us to grow.
 to do_ jus-tice, kind-ness, mer-cy,_ eq - ui - ty, and peace to all.
 As we_ car-ry this flame to - ward a new world, our fu - ture's bright.



This flame rep-re-sentsa__ place where all are val - ued, all be - long.
 This flame rep-re-sentsa__ peo - ple found in ev - ery faith and__ creed.
 This flame rep-re-sentsa__ prom - ise, one we make with the Di - vine.



With this flame we speak to__ pow-er,_ with this_ flame, we join in song.
 Peo-ple_ who com-mit to__ serv-ing all their neigh-bors, and their needs.
 A new world we are cre - a - ting, we can__ make to - mor - row shine!

Arrangement Permissions



One-time Adaptation



New Arrangement OK



Seek permission to arrange

Look at the *Sing Out Love* "Permissions"
 section for further explanation

As We Carry This Flame Forward

♩ = 56 E♭ Cm Fm B♭7 Gm Cm A♭ M7 B♭9 E♭



1. As we_car-ry this flame for - ward, we hold true to what we know.
 2. As we_car-ry this flame for - ward, hand in__ hand, we heed the call
 3. As we_car-ry this flame for - ward, it goes__ with us as a light.

5 E♭ Cm Fm B♭7 Gm Cm A♭ maj7 B♭9 E♭



As we_car-ry this flame for - ward, we leave space for us to grow.
 to do__ jus-tice, kind-ness, mer-cy,__ eq - ui - ty, and peace to all.
 As we_car-ry this flame to - ward a new world, our fu - ture's bright.

9 E♭ Fm11 E♭ / G A♭ E♭ Fm11



This flame rep - re - sents a__ place where all are val - ued,
 This flame rep - re - sents a__ peo - ple found in ev - ery
 This flame rep - re - sents a__ prom - ise, one we make with

12 E♭ / G A♭ sus2 B♭ E♭ Cm



all be - long. With this__ flame we
 faith and__ creed. Peo - ple__ who com -
 the Di - vine. A new__ world we

14 Fm B♭7 Gm Cm A♭ maj7 B♭9 E♭



speak to__ pow - er,__ with this__ flame, we join in song.
 -mit to__ serv - ing__ all their__ neigh - bors, and their needs.
 are cre - a - ting, we can__ make to - mor - row shine!

Arrangement Permissions



One-time Adaptation



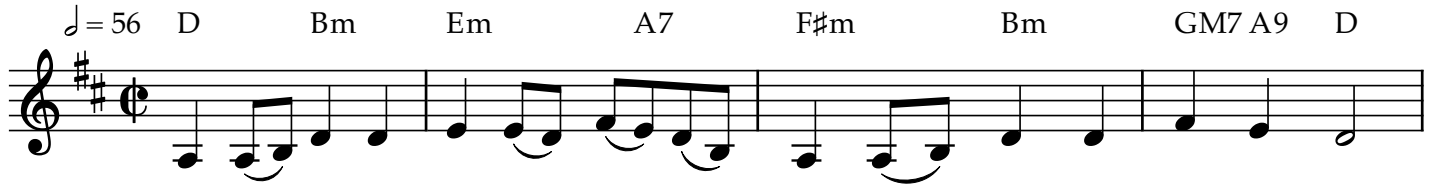
New Arrangement OK



Seek permission to arrange

Look at the Sing Out Love "Permissions"
 section for further explanation

As We Carry This Flame Forward



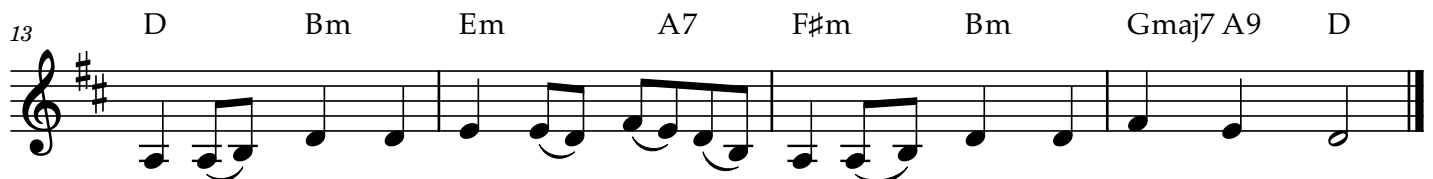
1. As we car-ry this flame for-ward, we hold true to what we know.
 2. As we car-ry this flame for-ward, hand in hand, we heed the call
 3. As we car-ry this flame for-ward, it goes with us as a light.



As we car-ry this flame for-ward, we leave space for us to grow.
 to do jus-tice, kind-ness, mer-cy, eq-ui-ty, and peace to all.
 As we car-ry this flame to-ward a new world, our fu-ture's bright.



This flame rep-re-sents a place where all are val-ued, all be-long.
 This flame rep-re-sents a peo-ple found in ev-ery faith and creed.
 This flame rep-re-sents a prom-ise, one we make with the Di-vine.



With this flame we speak to pow-er, with this flame, we join in song.
 Peo-ple who com-mit to serv-ing all their neigh-bors, and their needs.
 A new world we are cre-a-ting, we can make to-mor-row shine!

Arrangement Permissions



One-time Adaptation



New Arrangement OK



Seek permission to arrange

Look at the *Sing Out Love* "Permissions"
 section for further explanation

As We Carry This Flame Forward

♩ = 56 D♭ B♭ m E♭ m A♭7 Fm B♭ m G♭ M7 A♭9 D♭



1. As we car-ry this flame for - ward, we hold true to what we know.
 2. As we car-ry this flame for - ward, hand in — hand, we heed the call
 3. As we car-ry this flame for - ward, it goes with us as a light.

5 D♭ B♭ m E♭ m A♭7 Fm B♭ m G♭ maj7 A♭9 D♭



As we_ car-ry this flame for - ward, we leave space for us to grow.
 to do_ jus-tice, kind-ness, mer-cy, — eq - ui - ty, and peace to all.
 As we_ car-ry this flame to - ward a new world, our fu - ture's bright.

9 D♭ E♭ m11 D♭ / F G♭ D♭ E♭ m11



This flame rep - re - sents a — place where all are val - ued,
 This flame rep - re - sents a — peo - ple found in ev - ery
 This flame rep - re - sents a — prom - ise, one we make with

12 D♭ / F G♭ sus2 A♭ D♭ B♭ m E♭ m A♭7



all be - long. With this_ flame we speak to — pow - er, —
 faith and — creed. Peo - ple_ who com - mit to — serv - ing —
 the Di - vine. A new world we are cre - a - ting,

15 Fm B♭ m G♭ maj7 A♭9 D♭



with this_ flame, we join in song.
 all their_ neigh - bors, and their needs.
 we can_ make to - mor - row shine!

Arrangement Permissions



One-time Adaptation



New Arrangement OK



Seek permission to arrange

Look at the *Sing Out Love* "Permissions"
 section for further explanation

As We Carry This Flame Forward

♩ = 56 C# A#m D#m G#7 E#m A#m F#M7 G#9 C#



1. As we car-ry this flame for - ward, we hold true to what we know.
 2. As we car-ry this flame for - ward, hand in — hand, we heed the call
 3. As we car-ry this flame for - ward, it goes with us as a light.

5 C# A#m D#m G#7 E#m A#m F#maj7 G#9 C#



As we_ car-ry this flame for - ward, we leave space for us to grow.
 to do_ jus-tice, kind-ness, mer-cy, — eq - ui - ty, and peace to all.
 As we_ car-ry this flame to - ward a new world, our fu - ture's bright.

9 C# D#m11 C#/E# F# C# D#m11



This flame rep - re - sents a — place where all are val - ued,
 This flame rep - re - sents a — peo - ple found in ev - ery
 This flame rep - re - sents a — prom - ise, one we make with

12 C#/E# F#sus2 G# C# A#m D#m G#7



all be - long. With this_ flame we speak to — pow - er, —
 faith and — creed. Peo - ple_ who com - mit to — serv - ing —
 the Di - vine. A new world we are cre - a - ting,

15 E#m A#m F#maj7 G#9 C#



with this_ flame, we join in song.
 all their_ neigh - bors, and their needs.
 we can_ make to - mor - row shine!

Words: Wesley King, b.1988
 Music: attr. William Moore, 1790-1850
 © Wesley King
 Sing Out Love expiration July 2028

Arrangement Permissions



One-time Adaptation



New Arrangement OK



Seek permission to arrange

Look at the Sing Out Love "Permissions"
 section for further explanation

HOLY MANNA
 8.7.8.7.D.

As We Carry This Flame Forward

♩ = 56 C Am Dm G7 Em Am FM7 G9 C



1. As we_ car - ry this flame for - ward, we hold_ true to what we know.
 2. As we_ car - ry this flame for - ward, hand in_ hand, we heed the call
 3. As we_ car - ry this flame for - ward, it goes_ with us as a light.

5 C Am Dm G7 Em Am Fmaj7 G9 C



As we_ car - ry this flame for - ward, we leave space for us to grow.
 to do_ jus - tice, kind - ness, mer - cy, _ eq - ui - ty, and peace to all.
 As we_ car - ry this flame to - ward a new world, our fu - ture's bright.

9 C Dm11 C/E F C Dm11 C/E F#sus2 G



This flame rep - re - sents a_ place where all are val - ued, all be - long.
 This flame rep - re - sents a_ peo - ple found in ev - ery faith and_ creed.
 This flame rep - re - sents a_ prom - ise, one we make with the Di - vine.

13 C Am Dm G7 Em Am Fmaj7 G9 C



With this flame we speak to_ pow - er, _ with this_ flame, we join in song.
 Peo - ple_ who com - mit to_ serv - ing_ all their neigh - bors, and their needs.
 A new world we are cre - a - ting, we can_ make to - mor - row shine!

Words: Wesley King, b.1988
 Music: attr. William Moore, 1790-1850
 © Wesley King
 Sing Out Love expiration July 2028

Arrangement Permissions



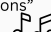
One-time Adaptation



New Arrangement OK



Seek permission to arrange

Look at the *Sing Out Love* "Permissions"
 section for further explanation 

HOLY MANNA
 8.7.8.7.D.

As We Carry This Flame Forward



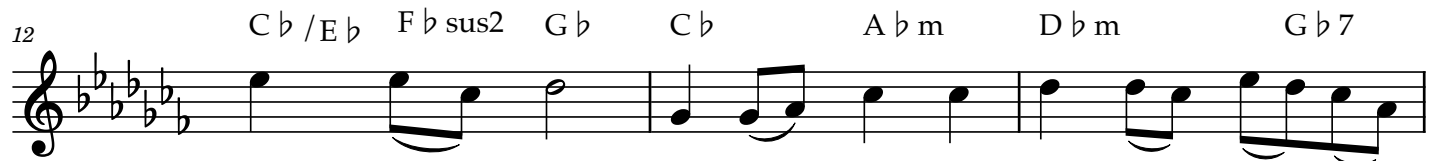
1. As we car-ry this flame for-ward, we hold true to what we know.
2. As we car-ry this flame for-ward, hand in— hand, we heed the call
3. As we car-ry this flame for-ward, it goes with us as a light.



As we car-ry this flame for-ward, we leave space for us to grow.
to do— jus-tice, kind-ness, mer-cy,— eq-ui-ty, and peace to all.
As we car-ry this flame to-ward a new world, our fu-ture's bright.



This flame rep - re - sents a— place where all are val - ued,
This flame rep - re - sents a— peo - ple found in ev - ery
This flame rep - re - sents a— prom - ise, one we make with



all be - long. With this— flame we speak to— pow - er,—
faith and— creed. Peo - ple— who com - mit to— serv - ing—
the Di - vine. A new world we are cre - a - ting,



with this— flame, we join in song.
all their— neigh - bors, and their needs.
we can— make to - mor - row shine!

Arrangement Permissions



One-time Adaptation



New Arrangement OK



Seek permission to arrange

Look at the Sing Out Love "Permissions"
section for further explanation

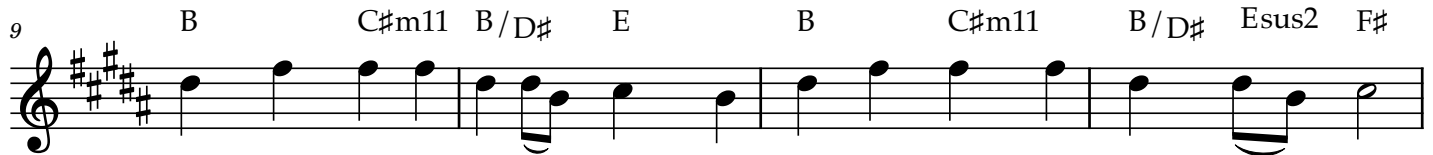
As We Carry This Flame Forward



1. As we_car-ry this flame for - ward, we hold true to what we know.
2. As we_car-ry this flame for - ward, hand in__ hand, we heed the call
3. As we_car-ry this flame for - ward, it goes_ with us as a light.



As we_car-ry this flame for - ward, we leave space for us to grow.
 to do_ jus-tice, kind-ness, mer-cy,_ eq - ui - ty, and peace to all.
 As we_car-ry this flame to - ward a new world, our fu - ture's bright.



This flame rep-re-sentsa__ place where all are val - ued, all be - long.
 This flame rep-re-sentsa__ peo - ple found in ev - ery faith and__ creed.
 This flame rep-re-sentsa__ prom - ise, one we make with the Di - vine.



With this flame we speak to__ pow-er,_ with this_ flame, we join in song.
 Peo-ple who com-mit to__ serv-ing all their neigh-bors, and their needs.
 A new world we are cre - a - ting, we can__ make to - mor - row shine!

Arrangement Permissions



One-time Adaptation



New Arrangement OK



Seek permission to arrange

Look at the *Sing Out Love* "Permissions"
 section for further explanation

As We Carry This Flame Forward

[illegible]

1. As we_car-ry this flame for - ward, we hold_ true to what we know.
 2. As we_car-ry this flame for - ward, hand in__ hand, we heed the call
 3. As we_car-ry this flame for - ward, it goes_ with us as a light.

5 B ♭ Gm Cm F7 Dm Gm E ♭ maj7 F9 B ♭

As we_ car-ry this flame for - ward, we leave space for us to grow.
to do_ jus-tice, kind-ness, mer-cy, _ eq - ui - ty, and peace to all.
As we_ car-ry this flame to - ward a new world, our fu - ture's bright.

[illegible]

This flame rep-re-sents a__ place where all are val - ued, all be - long.
This flame rep-re-sents a__ peo - ple found in ev - ery faith and__ creed.
This flame rep-re-sents a__ prom - ise, one we make with the Di - vine.

With this flame we
Peo - - ple who com - -
A new world we

14 Cm F7 Dm Gm E \flat maj7 F9 B \flat

speak to___ pow - er,___ with this___ flame, we join in song.
 -mit to___ serv - ing___ all their___ neigh - bors, and their needs.
 are cre - a - ting,___ we can___ make to - mor - row shine!

Arrangement Permissions



👉 One-time Adaptation



 New Arrangement OK



 Seek permission to arrange

Look at the *Sing Out Love* “Permissions” section for further explanation

HOLY MANNA
8.7.8.7.D.

As We Carry This Flame Forward



1. As we car-ry this flame for - ward, we hold true to what we know.
 2. As we car-ry this flame for - ward, hand in hand, we heed the call
 3. As we car-ry this flame for - ward, it goes with us as a light.



As we car-ry this flame for - ward, we leave space for us to grow.
 to do jus-tice, kind-ness, mer-cy, eq - ui - ty, and peace to all.
 As we car-ry this flame to - ward a new world, our fu - ture's bright.




This flame rep-re-sents a place where all are val - ued, all be - long.
 This flame rep-re-sents a peo - ple found in ev - ery faith and creed.
 This flame rep-re-sents a prom - ise, one we make with the Di - vine.




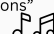
With this flame we speak to pow-er, with this flame, we join in song.
 Peo-ple who com-mit to serv-ing all their neigh-bors, and their needs.
 A new world we are cre - a - ting, we can make to - mor - row shine!

Arrangement Permissions

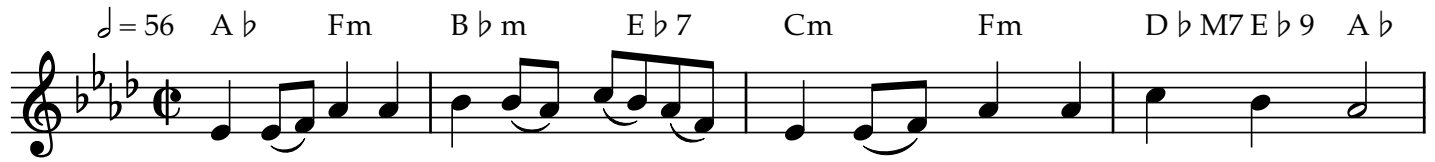
 One-time Adaptation

 New Arrangement OK

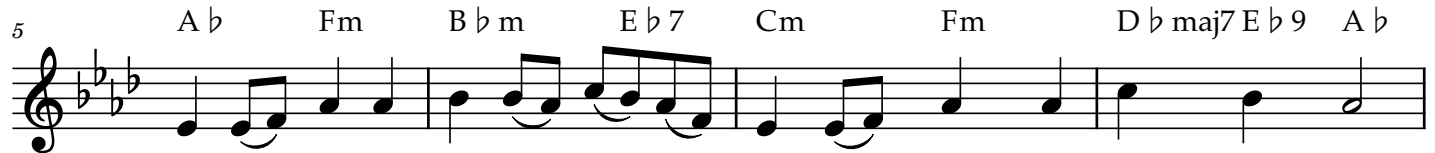
 Seek permission to arrange

Look at the *Sing Out Love* "Permissions"
 section for further explanation 

As We Carry This Flame Forward



1. As we car-ry this flame for - ward, we hold true to what we know.
 2. As we car-ry this flame for - ward, hand in— hand, we heed the call
 3. As we car-ry this flame for - ward, it goes with us as a light.



As we_ car-ry this flame for - ward, we leave space for us to grow.
 to do_ jus-tice, kind-ness, mer-cy, eq - ui - ty, and peace to all.
 As we_ car-ry this flame to - ward a new world, our fu - ture's bright.



This flame rep - re - sents a___ place where all are val - ued,
 This flame rep - re - sents a___ peo - ple found in ev - ery
 This flame rep - re - sents a___ prom - ise, one we make with



all be - long. With this___ flame we
 faith and___ creed. Peo - ple___ who com -
 the Di - vine. A new___ world we



speak to___ pow - er,___ with this___ flame, we join in song.
 -mit to___ serv - ing___ all their___ neigh - bors, and their needs.
 are cre - a - ting, we can___ make to - mor - row shine!

Arrangement Permissions



One-time Adaptation



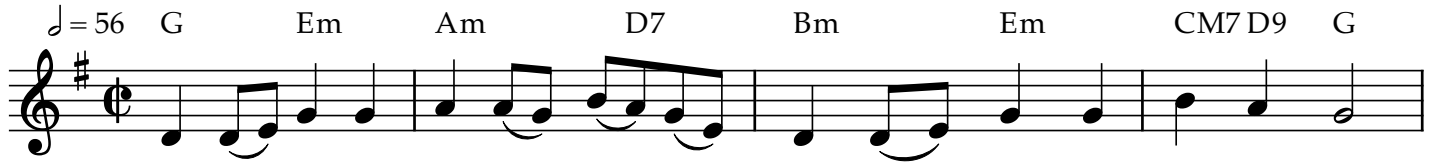
New Arrangement OK



Seek permission to arrange

Look at the *Sing Out Love* "Permissions"
 section for further explanation

As We Carry This Flame Forward



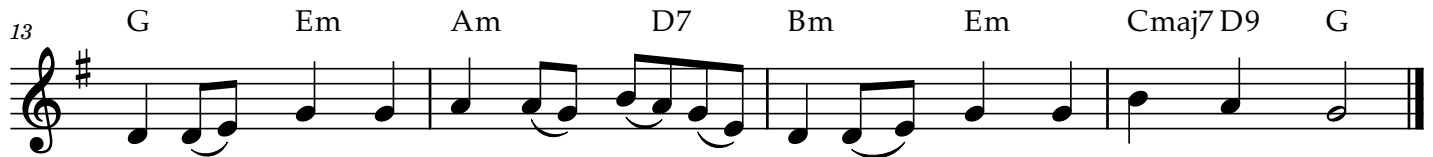
1. As we_ car-ry this flame for - ward, we hold_ true to what we know.
 2. As we_ car-ry this flame for - ward, hand in_ hand, we heed the call
 3. As we_ car-ry this flame for - ward, it goes_ with us as a light.



As we_ car-ry this flame for - ward, we leave space for us to grow.
 to do_ jus-tice, kind-ness, mer-cy, _ eq - ui - ty, and peace to all.
 As we_ car-ry this flame to - ward a new world, our fu - ture's bright.



This flame rep - re - sents a_ place where all are val - ued, all be - long.
 This flame rep - re - sents a_ peo - ple found in ev - ery faith and_ creed.
 This flame rep - re - sents a_ prom - ise, one we make with the Di - vine.



With this flame we speak to_ pow-er, _ with this_ flame, we join in song.
 Peo-ple_ who com-mit to_ serv-ing all their neigh-bors, and their needs.
 A new world we are cre - a - ting, we can_ make to - mor - row shine!

Arrangement Permissions



One-time Adaptation



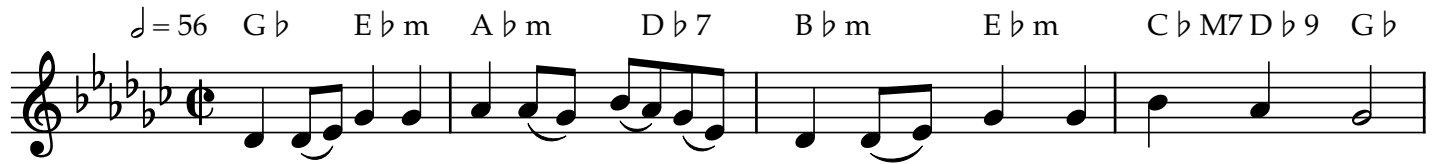
New Arrangement OK



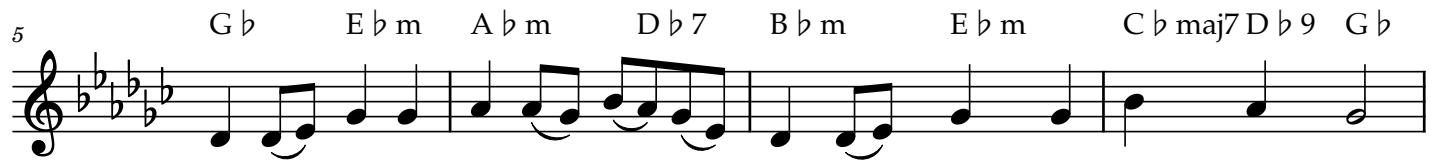
Seek permission to arrange

Look at the *Sing Out Love* "Permissions"
 section for further explanation

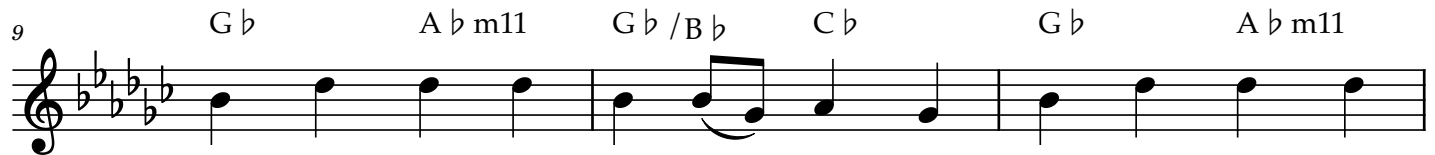
As We Carry This Flame Forward



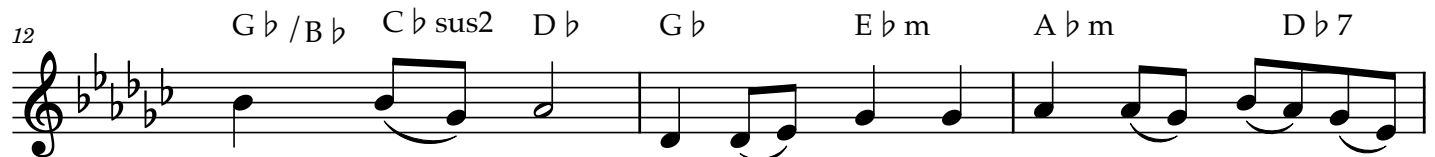
1. As we car-ry this flame for - ward, we hold true to what we know.
 2. As we car-ry this flame for - ward, hand in___ hand, we heed the call
 3. As we car-ry this flame for - ward, it goes with us as a light.



As we car-ry this flame for - ward, we leave space for us to grow.
 to do___ jus-tice, kind-ness, mer-cy,___ eq - ui - ty, and peace to all.
 As we car-ry this flame to - ward a new world, our fu - ture's bright.



This flame rep - re - sents a___ place where all are val - ued,
 This flame rep - re - sents a___ peo - ple found in ev - ery
 This flame rep - re - sents a___ prom - ise, one we make with




all be - long. With this___ flame we speak to___ pow - er,___
 faith and___ creed. Peo - ple___ who com - mit to___ serv - ing___
 the Di - vine. A new world we are cre - a - ting,




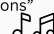
with this___ flame, we join in song.
 all their___ neigh - bors, and their needs.
 we can___ make to - mor - row shine!

Arrangement Permissions

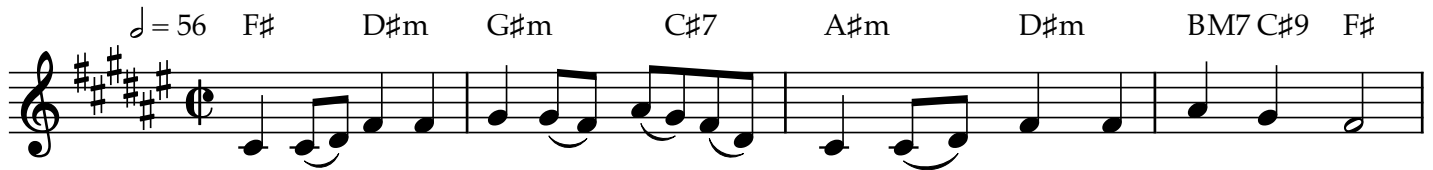
 One-time Adaptation

 New Arrangement OK

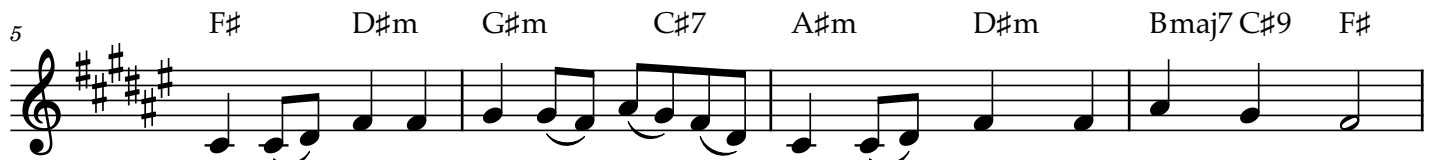
 Seek permission to arrange

Look at the *Sing Out Love* "Permissions"
 section for further explanation 

As We Carry This Flame Forward



1. As we_car-ry this flame for - ward, we hold true to what we know.
 2. As we_car-ry this flame for - ward, hand in___ hand, we heed the call
 3. As we_car-ry this flame for - ward, it goes_ with us as a light.



As we_ car-ry this flame for - ward, we leave space for us to grow.
 to do_ jus-tice, kind-ness, mer-cy,___ eq - ui - ty, and peace to all.
 As we_ car-ry this flame to - ward a new world, our fu - ture's bright.



This flame rep - re - sents a___ place where all are val - ued,
 This flame rep - re - sents a___ peo - ple found in ev - ery
 This flame rep - re - sents a___ prom - ise, one we make with



all be - long. With this_ flame we speak to___ pow - er,___
 faith and___ creed. Peo - ple_ who com - mit to___ serv - ing___
 the Di - vine. A new world we are cre - a - ting,



with this___ flame, we join in song.
 all their___ neigh - bors, and their needs.
 we can___ make to - mor - row shine!

Arrangement Permissions



One-time Adaptation



New Arrangement OK



Seek permission to arrange

Look at the *Sing Out Love* "Permissions"
 section for further explanation