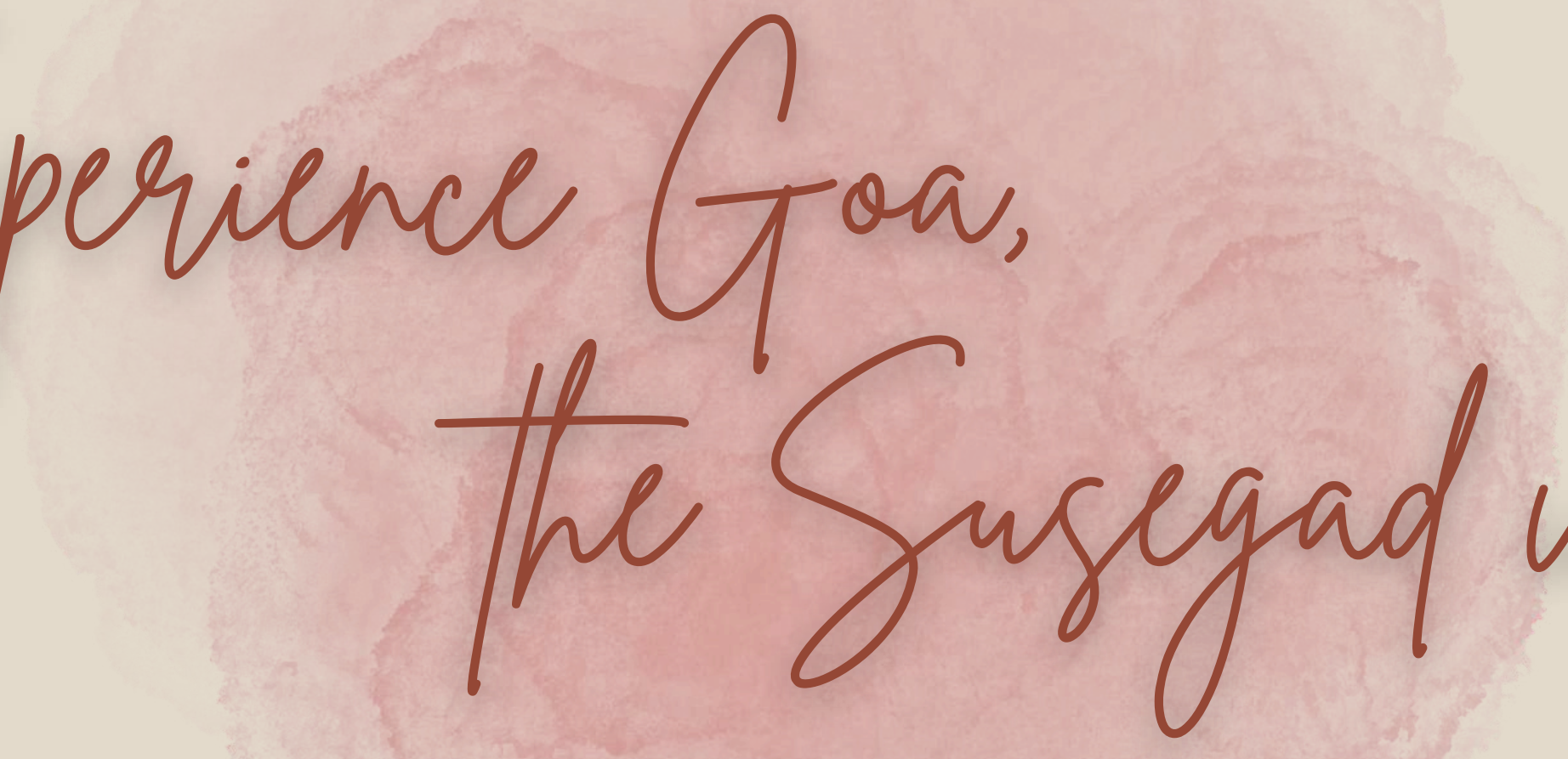


*Soul in Skies*





Experience Goa,  
the Susegad way....

# Perfectly Located

Nestled along the tranquil banks of the Chapora River, Siolim is a charming Goan village that blends history with modern comfort. Wander through streets lined with traditional Portuguese houses, or visit the ancient St. Anthony's Church, reflecting the village's rich heritage.

Discover the unique blend of timeless charm and contemporary amenities in Siolim, where every day feels like a getaway.



# Neighborhood Essentials



## RESTAURANTS

- 1) Thalassa
- 2) Summer House
- 3) Hosa
- 4) Gunpowder
- 5) Jamun
- 6) Tamil Table
- 7) Artijuna
- 8) Bomras
- 9) Hideaway
- 10) Pisco - by the beach



## SCHOOLS

- 1) Shree Ganesh Higher Secondary School
- 2) Holy Cross High School
- 3) St. Anthony's Primary School
- 4) Ganesh Vidya Mandir
- 5) Assagao Union High School
- 6) Joedells Primary School
- 7) SFX Pre - Primary School
- 8) St. Francis Xavier's High And Higher Secondary School
- 9) Kushe Higher Secondary School



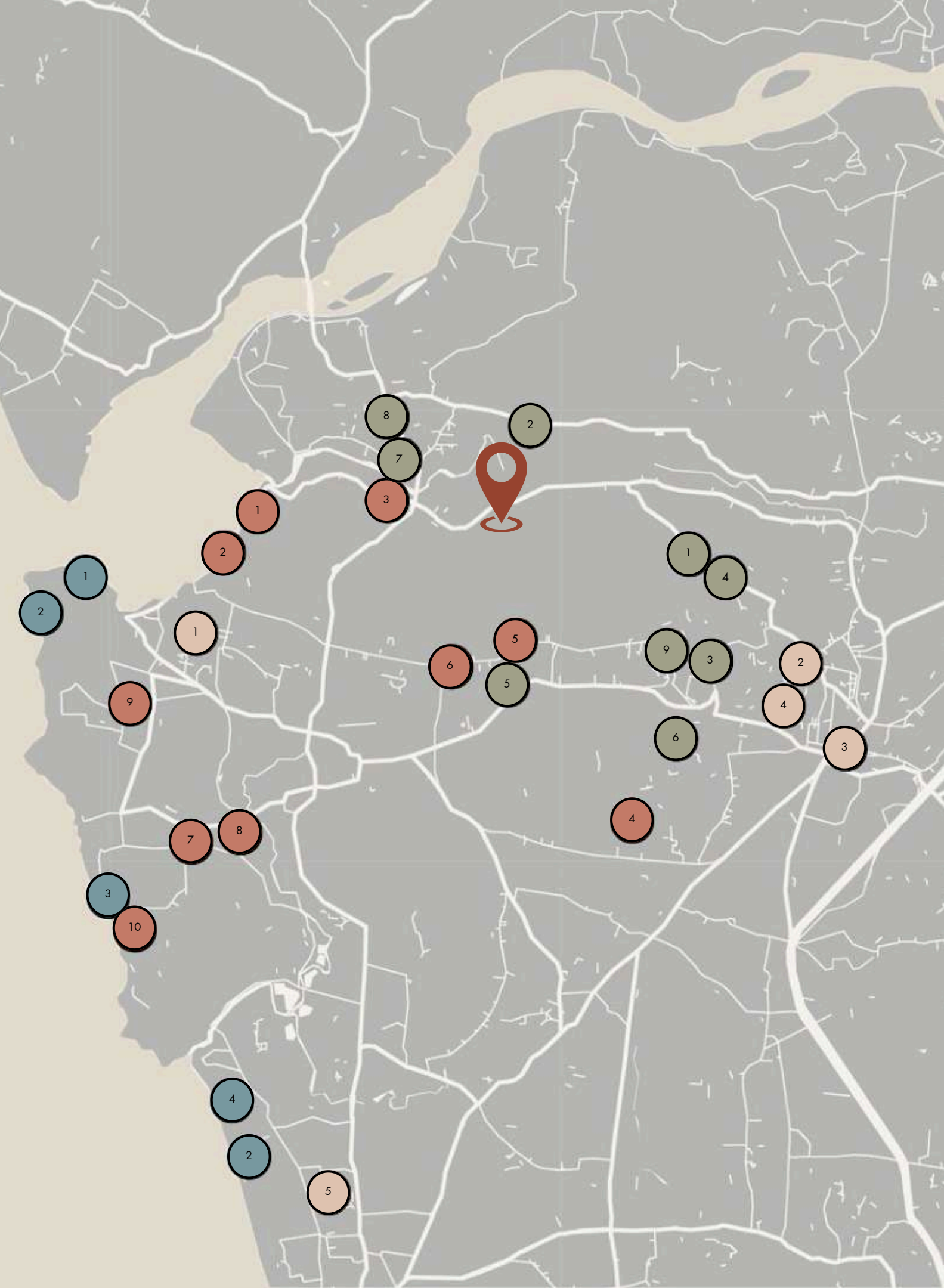
## BEACHES

- 1) Chapora Beach
- 2) Baga Beach
- 3) Vagator Beach
- 4) Calangute Beach
- 5) Anjuna Beach



## HOSPITALS

- 1) St. Anthony's Hospital
- 2) Bhagyoday Hospital
- 3) Holy Cross General Remanso Hospital
- 4) Dr Milind Colvalcar's Mapusa Clinic Medical Centre
- 5) Mathew Braganza Hospital






# Siolim Skies

Nestled in the countryside, *Siolim Skies* spans 1,550 sq. mts. of lush greenery and features a private community of **three unique villas**. This project stands out for its minimalist design, blending modern and regional elegance. *Siolim Skies* offers residents modern comforts with state-of-the-art features and sustainable, eco-friendly amenities.

Inspired by the surrounding environment, the project aims to both transform and conserve. The multi-level **4 BHK villas** at *Siolim Skies* are constructed with remarkable restraint, raised over the sloping terrain to preserve the natural landscape. Each villa is uniquely designed to conserve existing age-old trees, integrating the structure around them. The architecture is simple and understated, focusing on creating spaces that offer beautiful views of the surroundings.



A modern, two-story house with a white facade and terracotta roof tiles. The house features large windows, a balcony with a wooden railing, and a covered outdoor area with a chair and a small table. A large tree stands in the foreground, and a swimming pool is visible in the lower left. The scene is set in a lush, tropical environment with various plants and a clear blue sky.

Life is slow, relaxed and  
steeped in tropical solitude.  
Experience a tranquil lifestyle  
at *Siolim Skies*

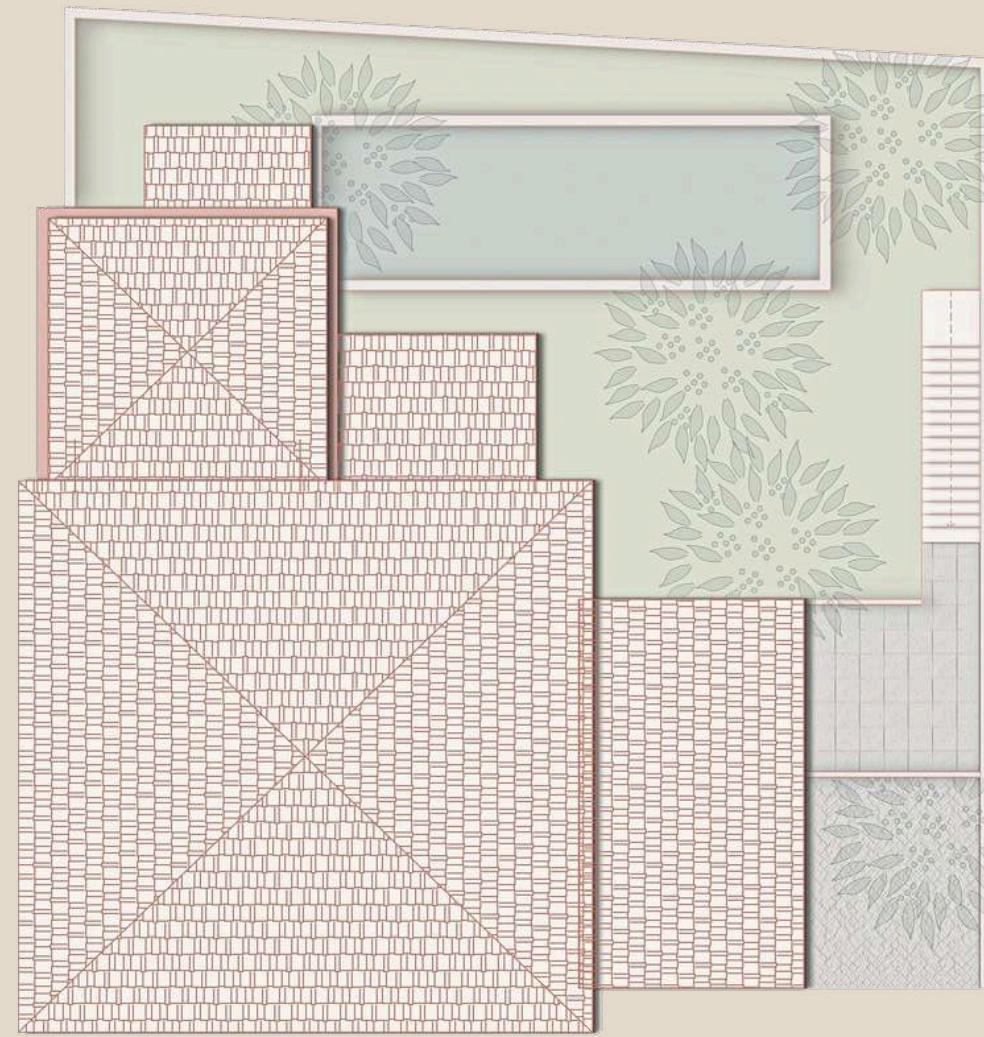


*"Discover serenity in the city  
with a home designed to  
embrace every tree, creating a  
oasis in the heart of a bustling  
beach town."*

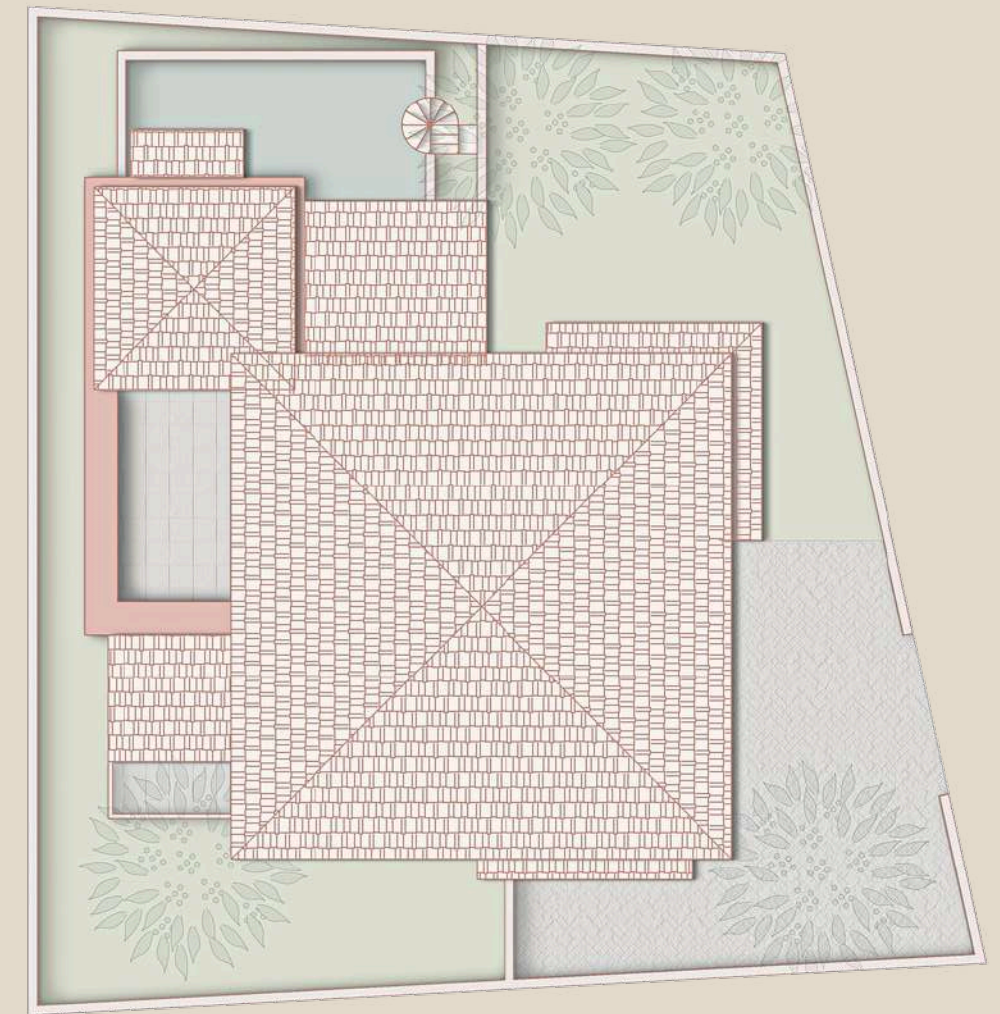




VANILLA SKY



BLUE BIRD



PURPLE RAIN

# Villa Design

*Siolim Skies* recites a story of three well-appointed hedonistic villas rooted in minimalism and mirroring the untouched wilderness of its surroundings.

Right from the stone paved driveway or the laterite masonry façade, *Siolim Skies* is meticulously planned to greet residents with minimalism and majesty.

Echoing the natural environment, the lavish balconies & terraces, landscaped gardens, individual plunge pools, and courtyards with longstanding trees, invite the shaded skies of Siolim to be part of your living space.



# Vanilla Sky

Ground Floor



Built Up  
5009  
Sq ft

Carpet  
3845  
Sq ft

First Floor



Balcony  
332  
Sq ft

Terrace  
591  
Sq ft

Second Floor



Pool  
527  
Sq ft

Garden  
1141  
Sq ft

# Blue Bird

Ground Floor



Built Up  
4820  
Sq ft

Carpet  
3571  
Sq ft

First Floor



Balcony  
363  
Sq ft

Terrace  
715  
Sq ft

Second Floor



Pool  
435  
Sq ft

Garden  
563  
Sq ft

# Purple Rain

Basement



Built Up  
5580  
Sq ft

Carpet  
3812  
Sq ft

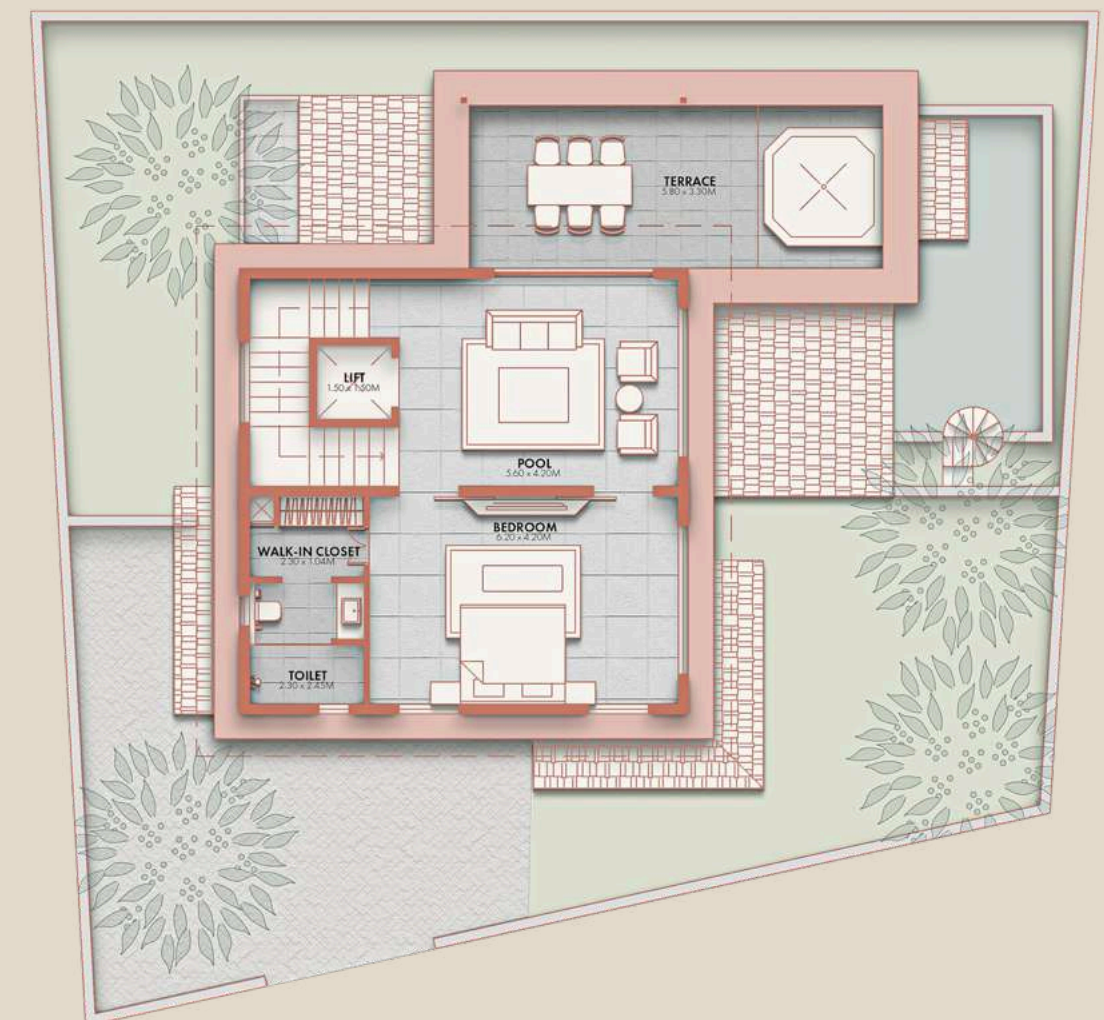
Ground Floor



Balcony  
403  
Sq ft

Terrace  
263  
Sq ft

First Floor



Pool  
275  
Sq ft

Garden  
675  
Sq ft



# Modern Living

The **fully furnished** villas at *Siolim Skies* offer spacious living areas filled with natural light and thoughtfully designed interiors.

The living and dining area on the ground floor opens onto the pool deck, making it ideal for both entertainment and relaxation. The double-height ceiling and large glass windows connect the indoors with the outdoors, showcasing the beauty of the interiors and their seamless integration with the surrounding environment.



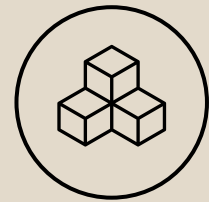




Each of the four bedrooms at *Siolim Skies* is designed with a neutral color palette and cozy furnishings that reflect the natural surroundings. The spacious ensuite Primary Bedroom, complete with a walk-in closet and a private lounge on the second floor, is the highlight of the villa



# ARCHITECTURAL FEATURES



## STRUCTURE

- Earthquake resistant RCC framed structure
- External walls with laterite masonry
- Internal walls in fly ash bricks
- High plinth-levels with damp-proofing below the ground floor
- Reinforced-concrete sloping roofs
- Waterproofing for terraces/sundecks and sloped roofs



## INTERNAL

- A combination of natural stones and IPS for living and bedrooms
- High gloss smooth marble stucco finish on all walls
- Doors & Windows made of sal wood, with stone frames to withstand heavy rainfalls.
- Wood handrails with MS work for balconies and staircase
- Lighting fixtures provided. Certain public spaces have artistic light installations by *Studio Evokar*.



## BATHROOM

- Fixtures and fittings of reputed brands
- High quality vitrified tiles for walls and floor (anti-skid), IPS patterns
- Toughened glass partitions to shower area
- Quartz/granite wash basin counter tops
- Centralised heat exchanger for hot water



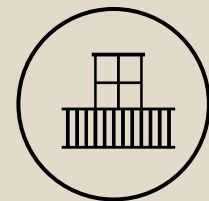
## EXTERNAL

- Private landscaped garden
- Private swimming pool
- Driveway with stone paving
- Dedicated car park for all villas as well as common guest parking



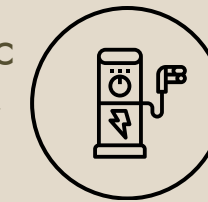
## KITCHEN

- Stainless Steel modular kitchen from a reputed brand
- Quartz (Engineered stone) counter tops
- Designer ceramic tiles as back splash over quartz worktops
- Hettich fittings for pull outs and shutters
- Double stainless-steel sink in kitchen
- Dedicated utility space for washing machines and dryers



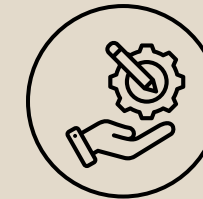
## TERRACES & BALCONIES

- Shaded pergolas
- Landscaped with ambient lighting
- Outdoor furniture
- Provision for barbecue and bar



## ELETRICALS

- Inverter provision
- Generator back up
- Built-in WiFi cabling
- High quality covered wiring with branded modular switch



## SERVICES

- Central VRV Air Conditioner
- 24 hour security
- CCTV in all common areas
- Visitors car parking
- Maintenance for 2 years



# FUTURE ENDEAVOURS

"Crafting *elegance* in *natural* harmony"



