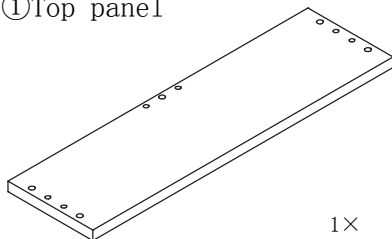
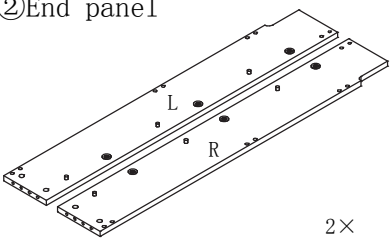
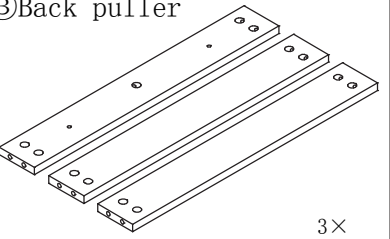
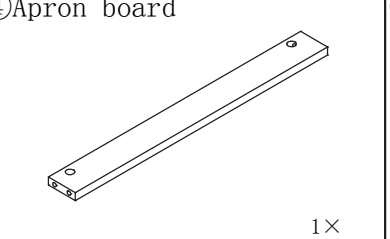
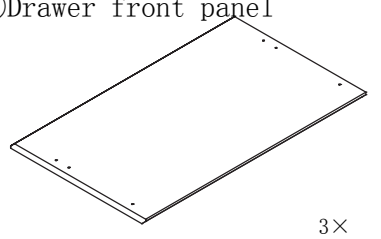
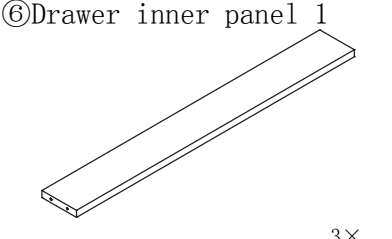
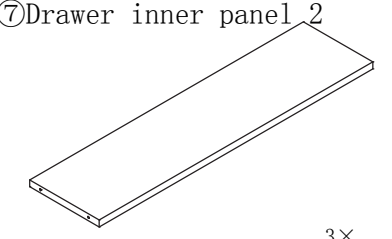
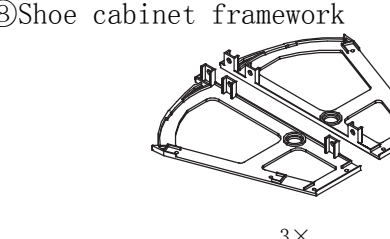
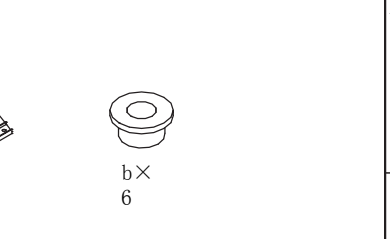
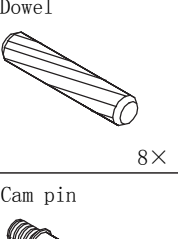
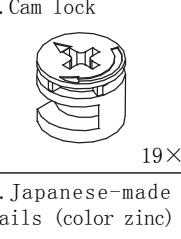
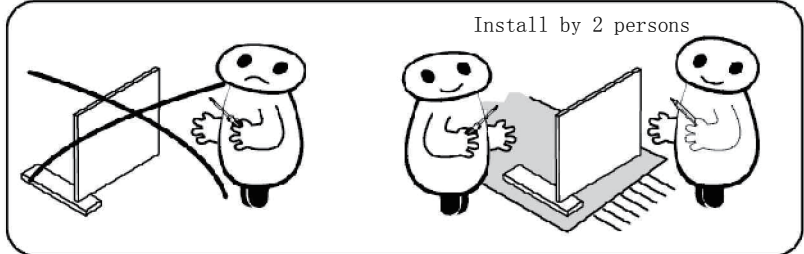
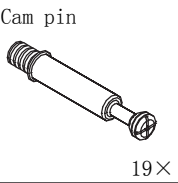
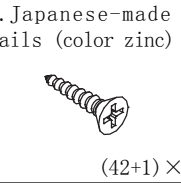
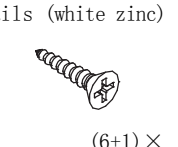
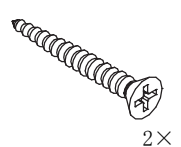
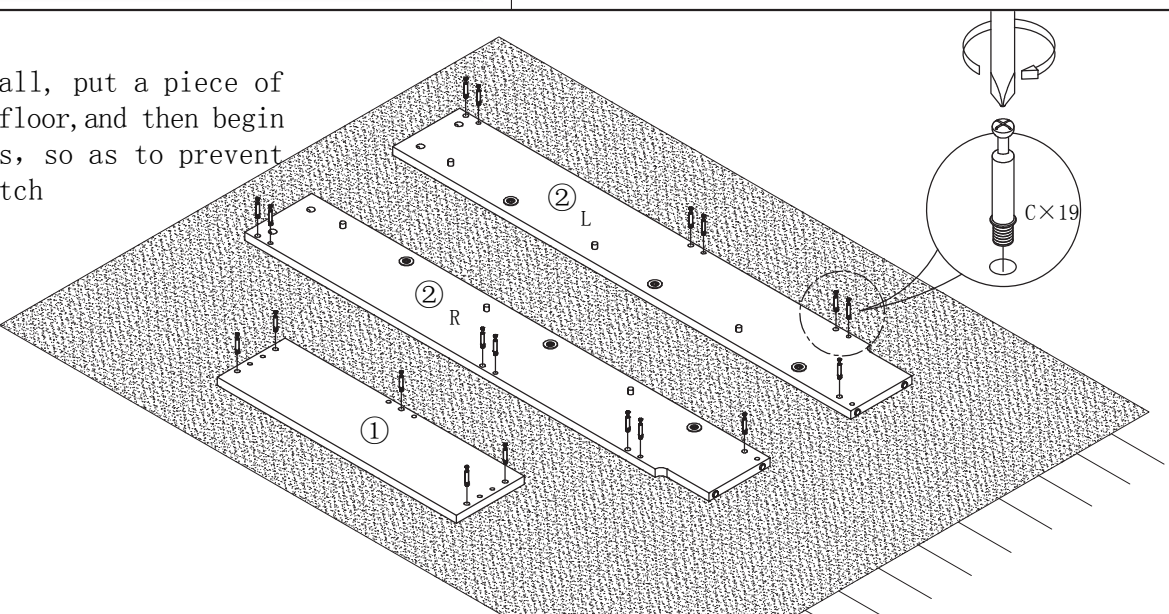
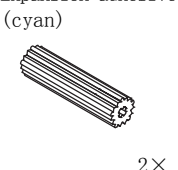

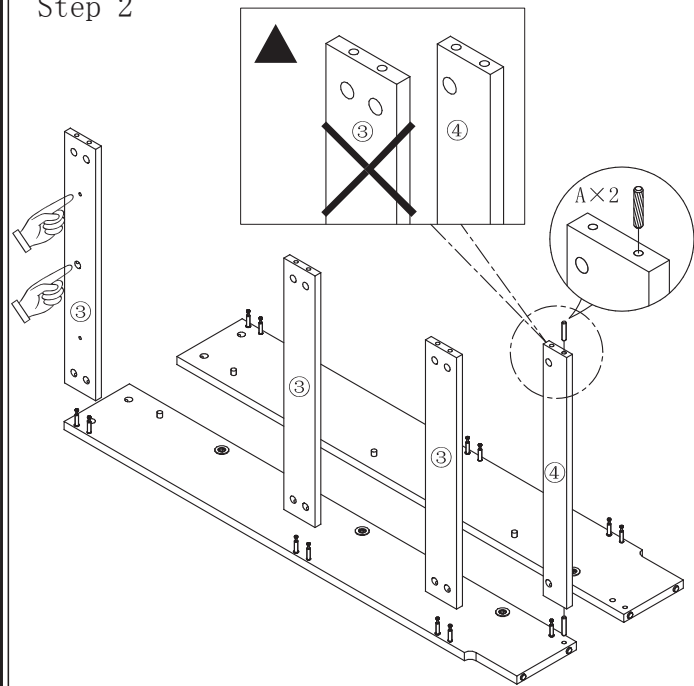
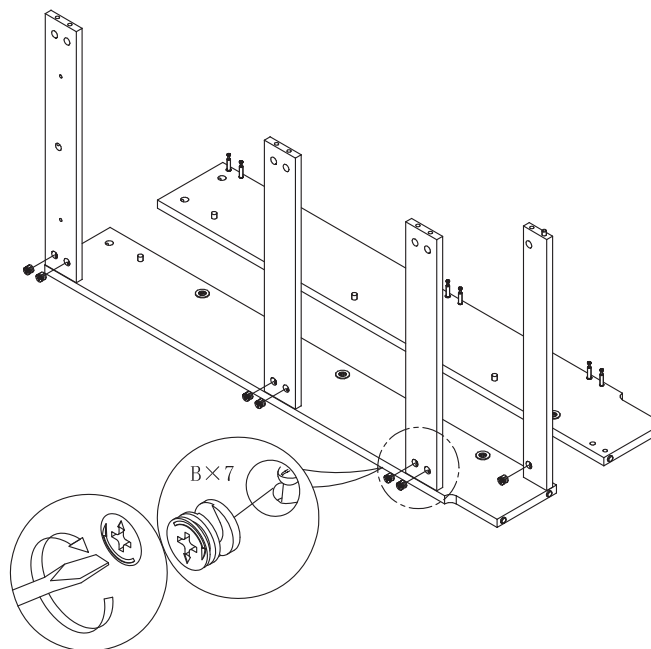


<div>①Top panel</div> <div></div> <div>1×</div>	<div>②End panel</div> <div></div> <div>2×</div>	<div>③Back puller</div> <div></div> <div>3×</div>	<div>④Apron board</div> <div></div> <div>1×</div>	<div>⑤Drawer front panel</div> <div></div> <div>3×</div>	
<div>⑥Drawer inner panel 1</div> <div></div> <div>3×</div>	<div>⑦Drawer inner panel 2</div> <div></div> <div>3×</div>	<div>⑧Shoe cabinet framework</div> <div></div> <div>3×</div>	<div></div> <div>b×6</div>	<div>A. Dowel</div> <div></div> <div>8×</div>	<div>B. Cam lock</div> <div></div> <div>19×</div>
<div></div> <div>Install by 2 persons</div>				<div>C. Cam pin</div> <div></div> <div>19×</div>	<div>E. Japanese-made nails (color zinc)</div> <div></div> <div>(42+1)×</div>
				<div>F. Japanese-made nails (white zinc)</div> <div></div> <div>(6+1)×</div>	<div>G. Wood screw</div> <div></div> <div>2×</div>
<div>Step 1</div> <div>Attention:First of all, put a piece of carton or rug on the floor, and then begin to install the panels, so as to prevent the parts from scratch</div> <div></div>				<div>H. Expansion adhesive (cyan)</div> <div></div> <div>2×</div>	<div>I. Dual-purpose Screwdriver</div> <div></div> <div>1×</div>
				<div>Model</div> <div>GF531-0611</div>	
				<div>Size</div> <div>600*170*1170H</div>	

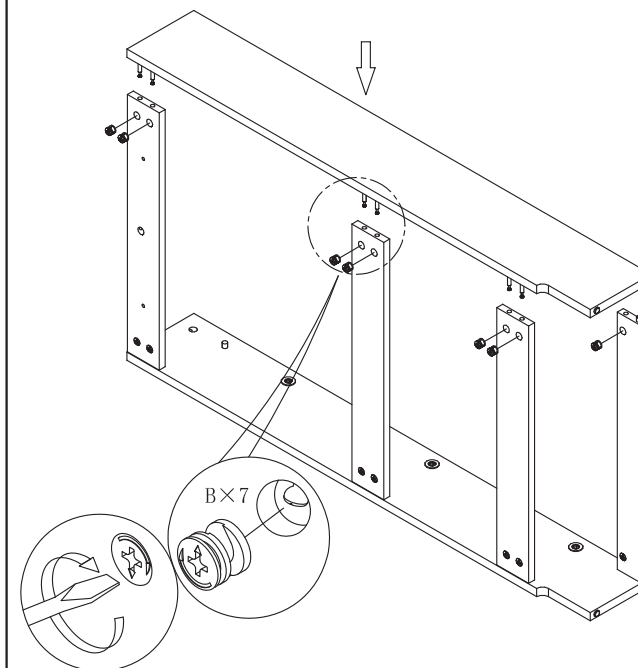
Step 2



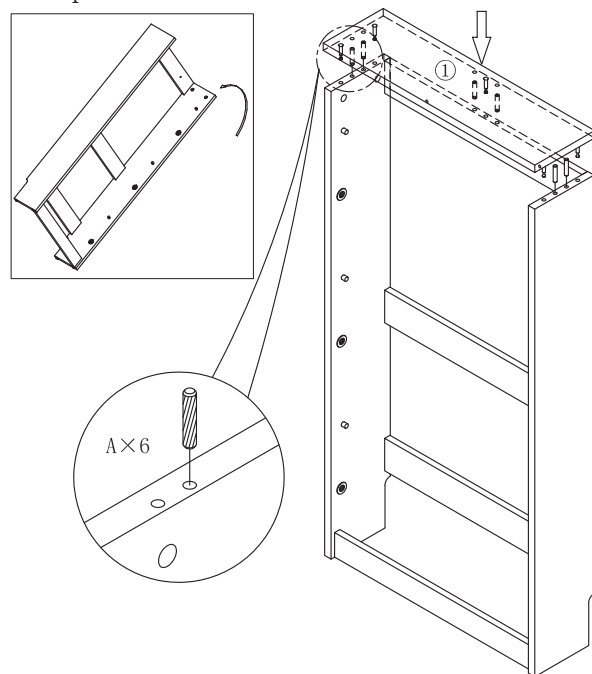
Step 3



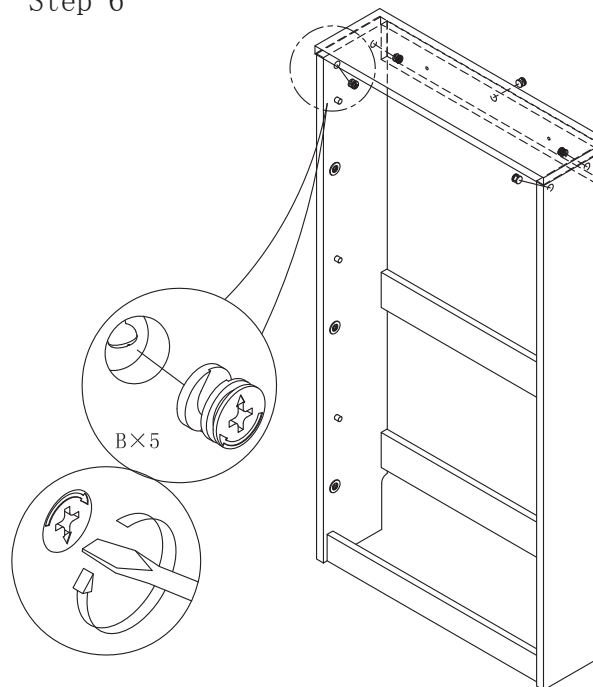
Step 4



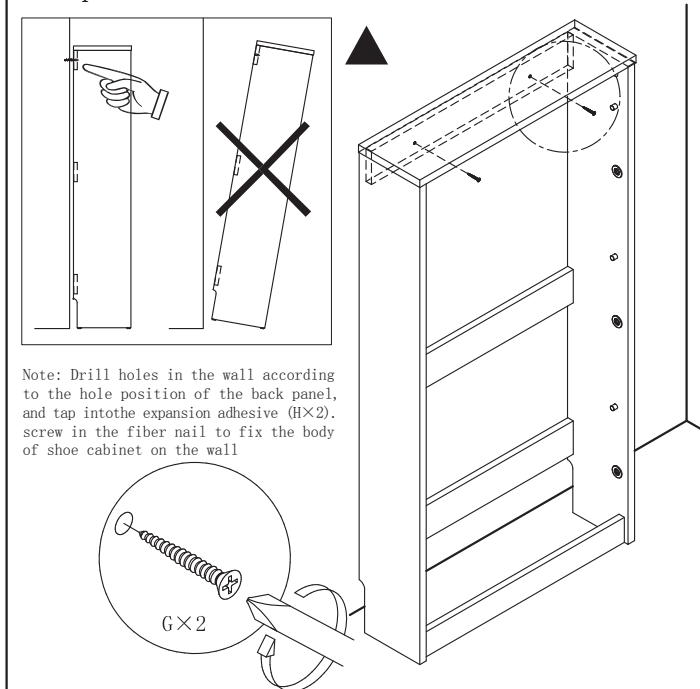
Step 5



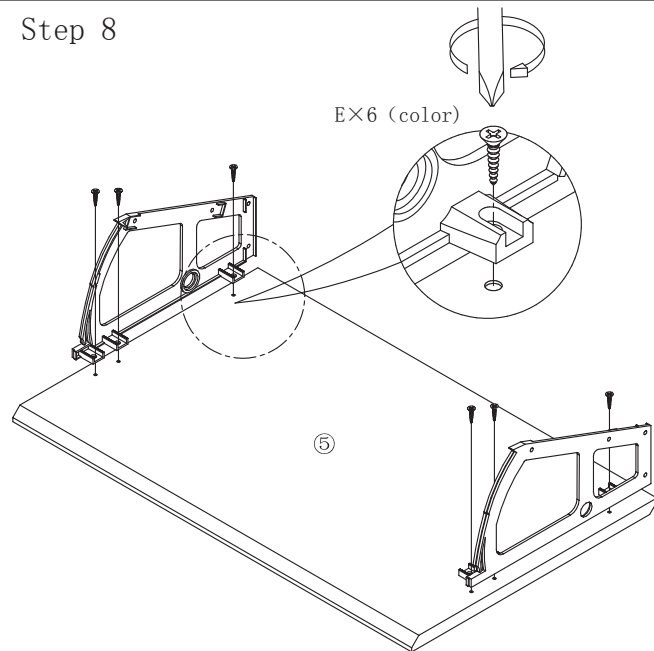
Step 6



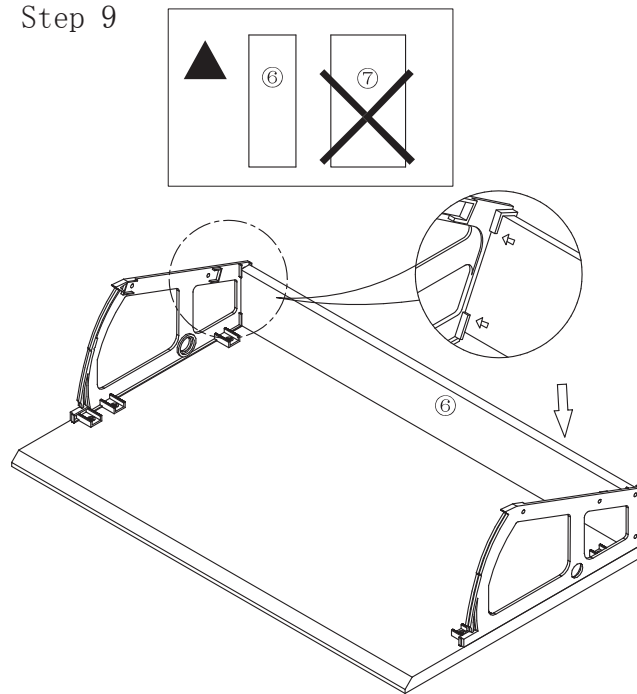
Step 7



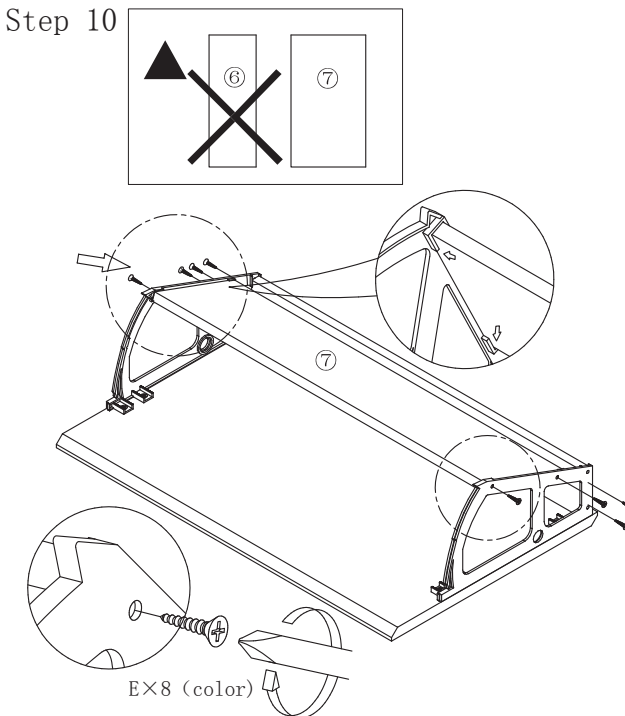
Step 8



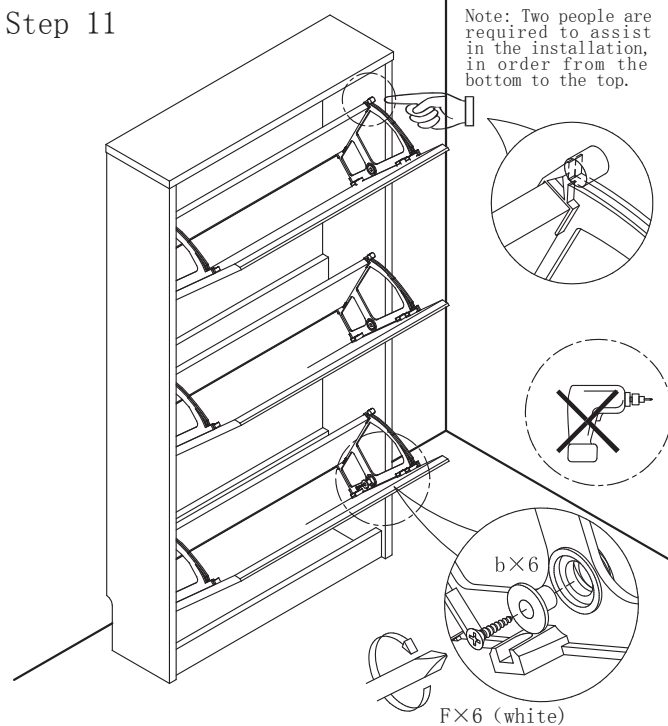
Step 9



Step 10



Step 11



Step 12

