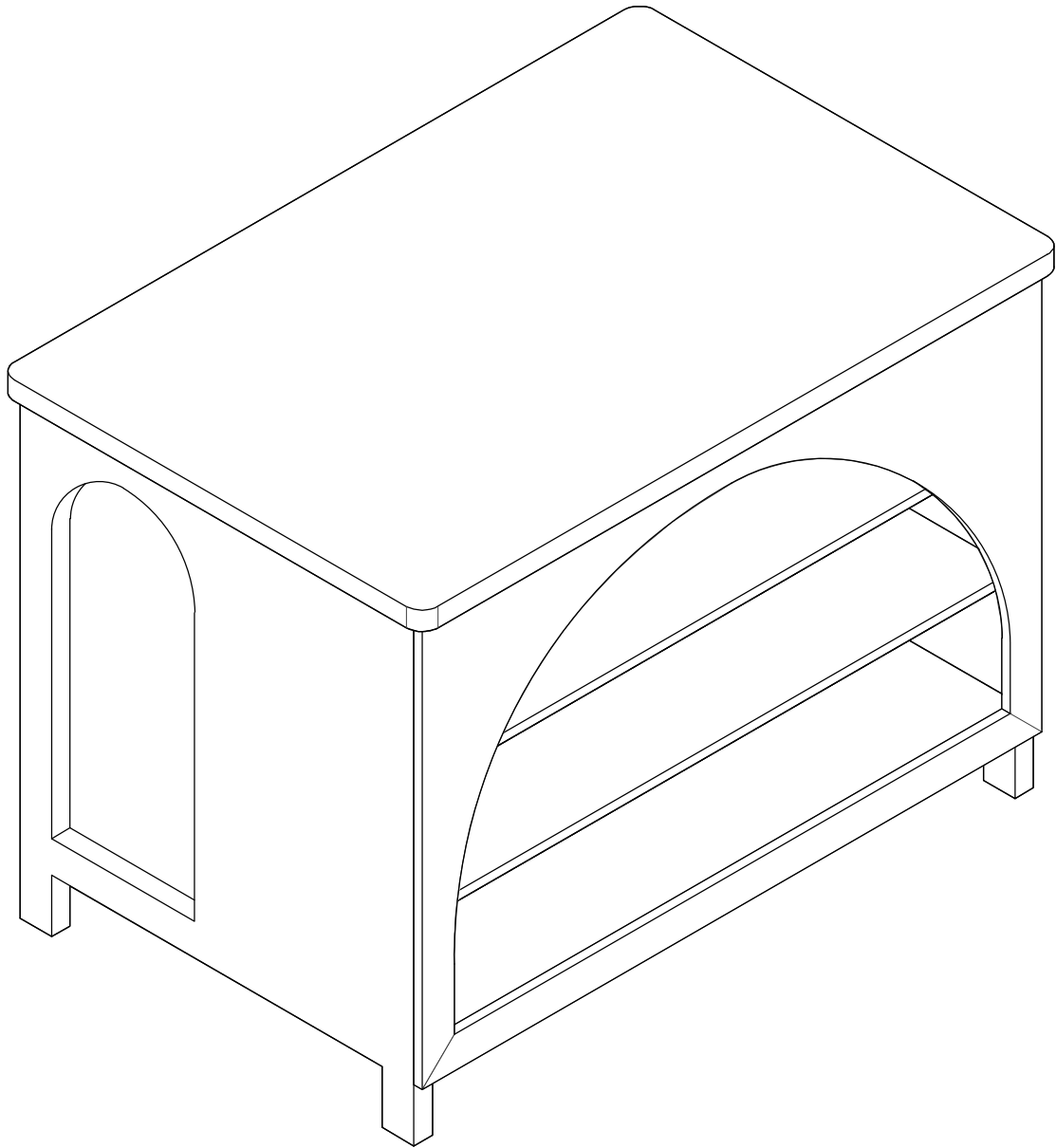


Assembly Instructions

Japandi Range



Loft

Product Code

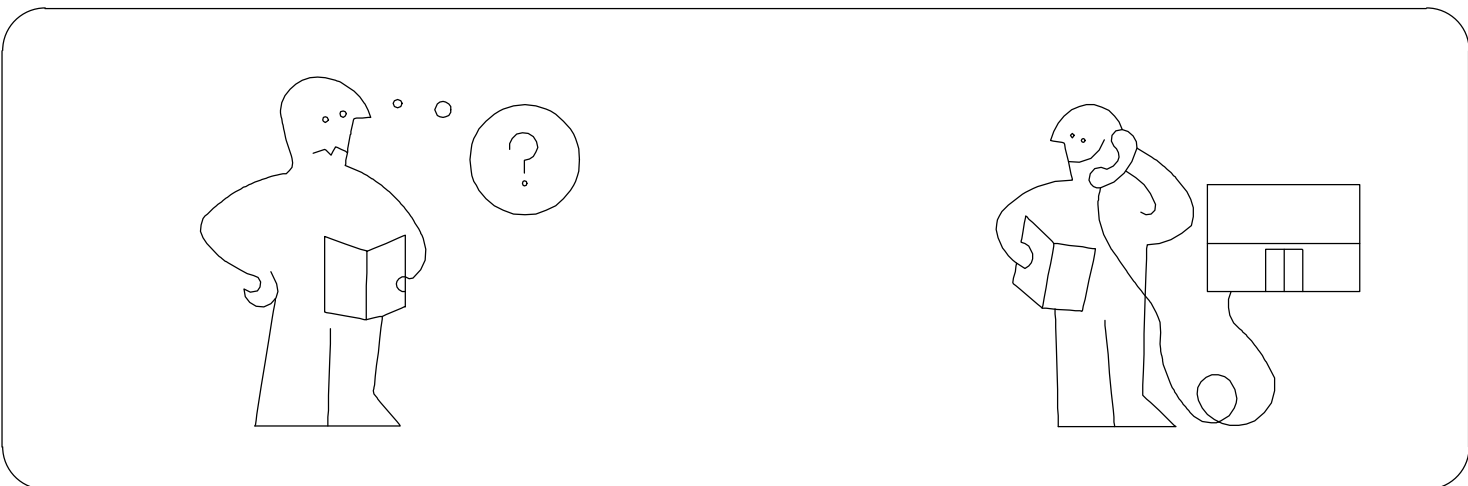
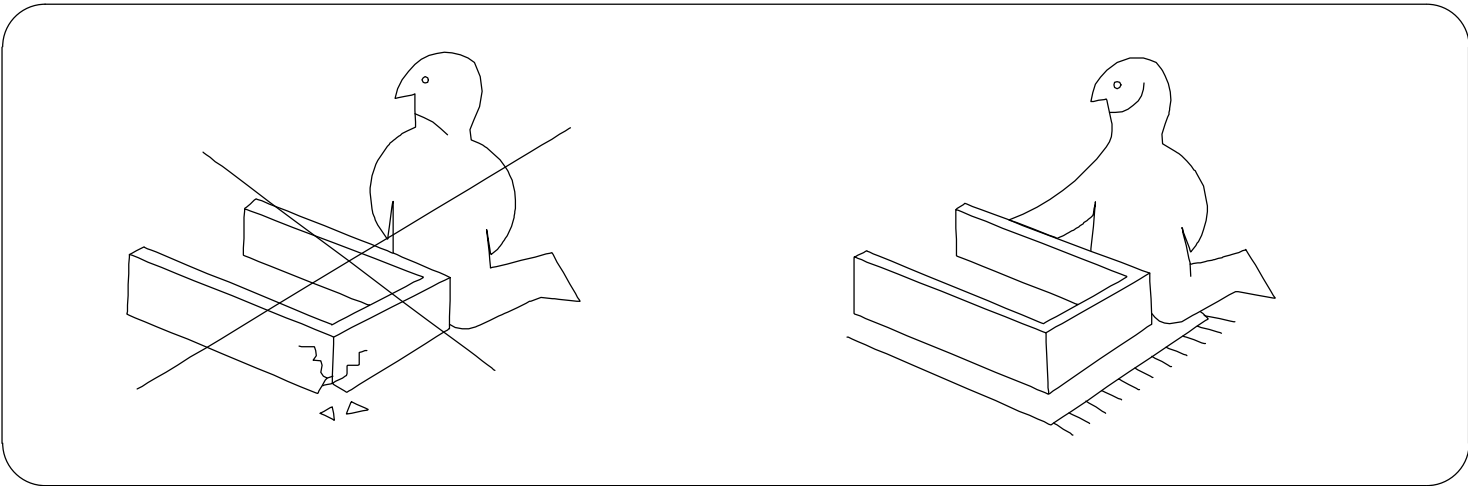
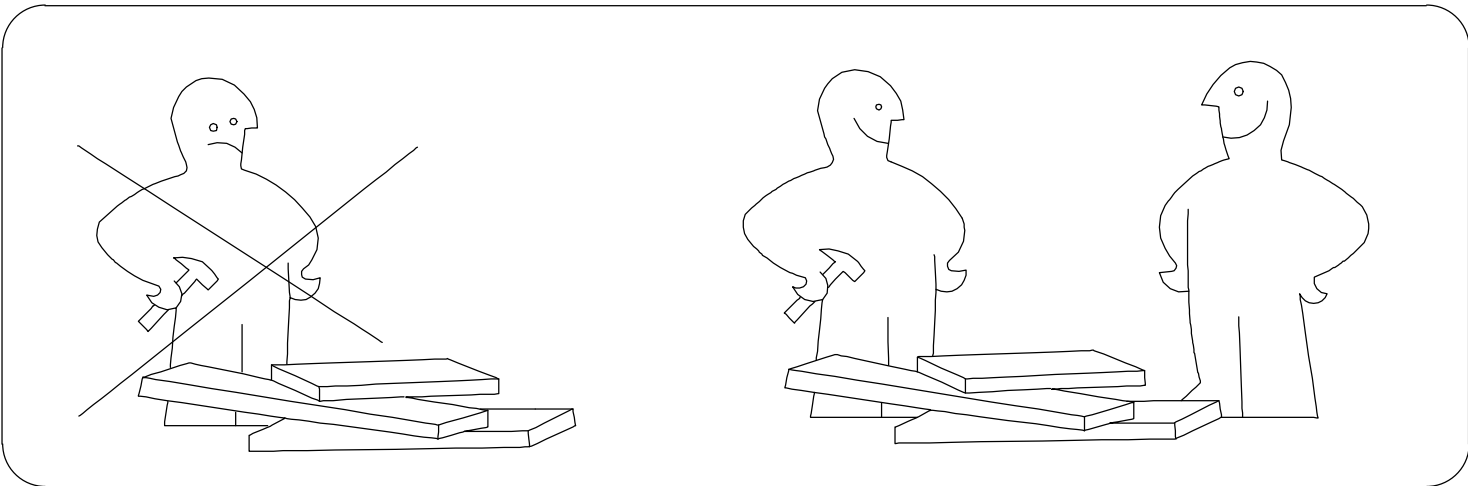
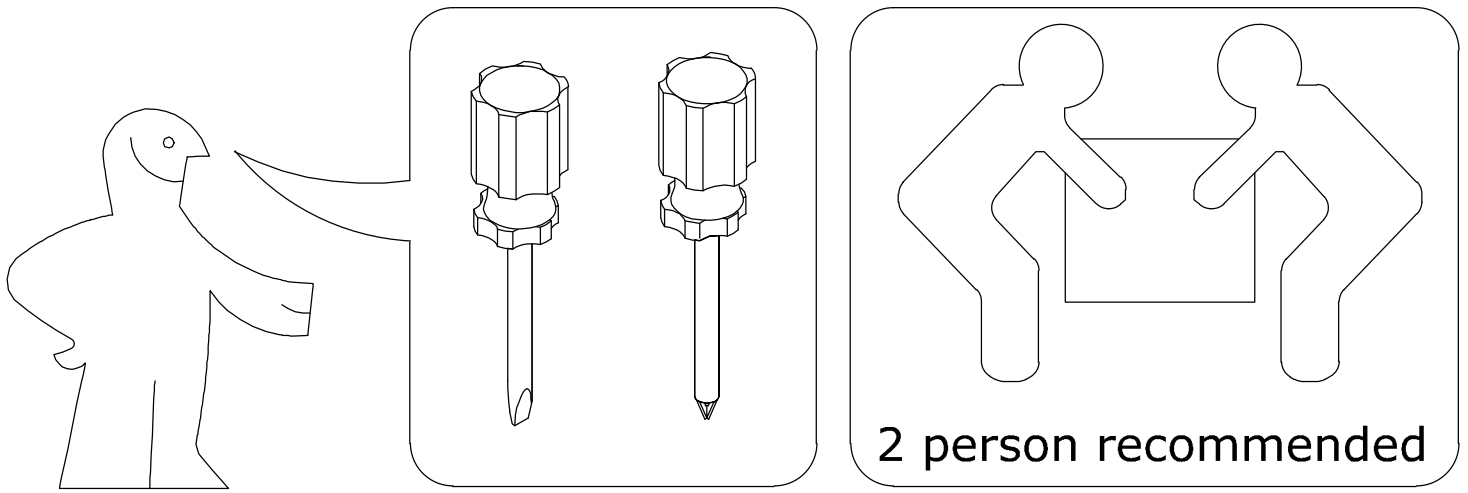
KIC-LOF-JAP-2~9721

Dimensions(W x D x H)

125*80*90cm

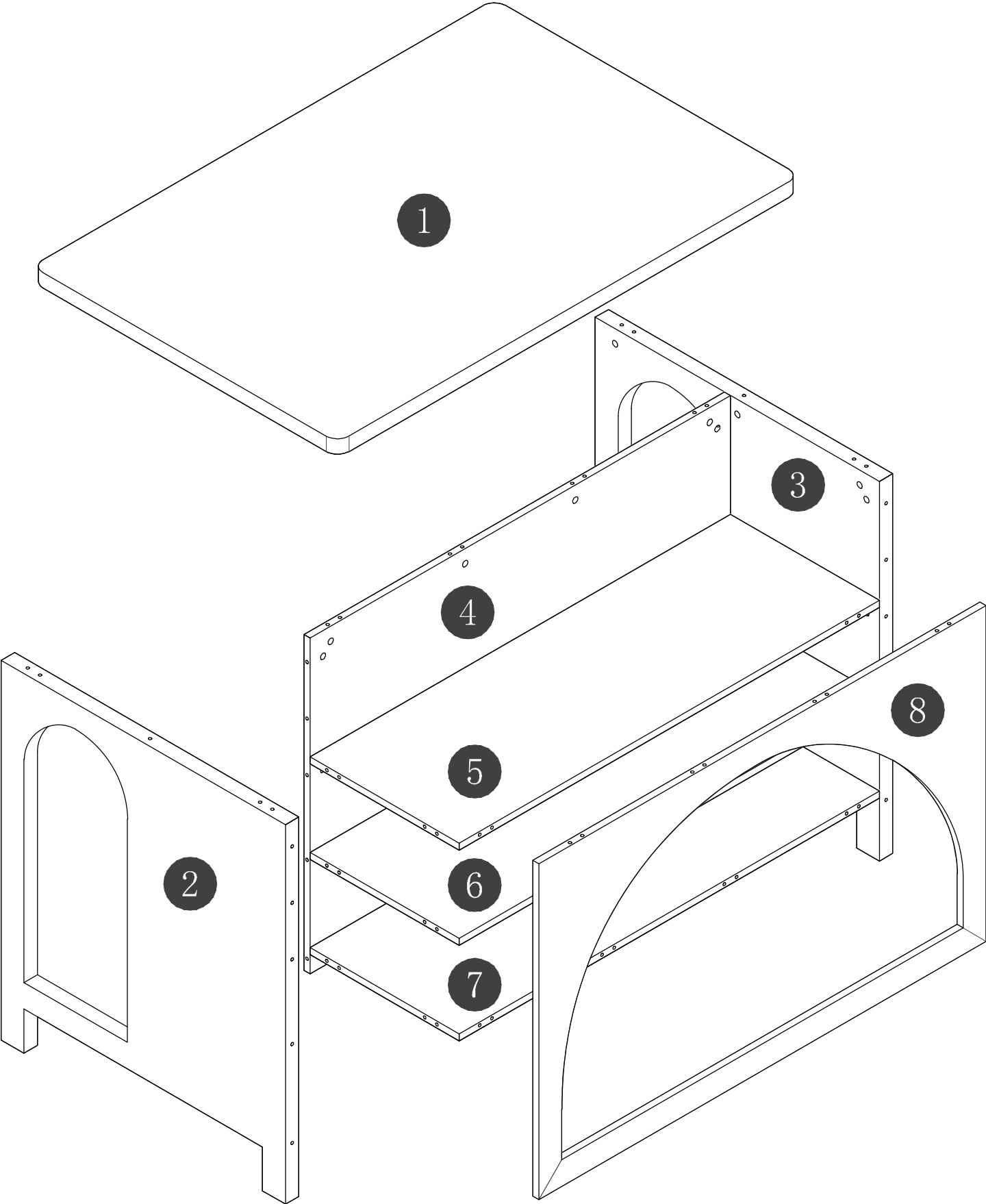
Important

Please read through instruction carefully
Before assembly and keep for future reference.

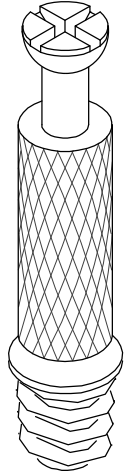


Panel No	Panel Sizes	Quantity
1	1210*800*35	1
2	860*744*35	1
3	860*744*35	1
4	760*1100*16	1

Panel No	Panel Sizes	Quantity
5	1100*390*16	1
6	1100*390*16	1
7	1100*390*16	1
8	760*1170*16	1



Fittings



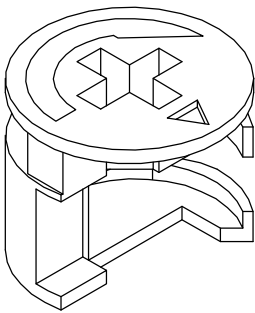
M6*40

A=56



Φ 8*30

B=50



Φ 15*12

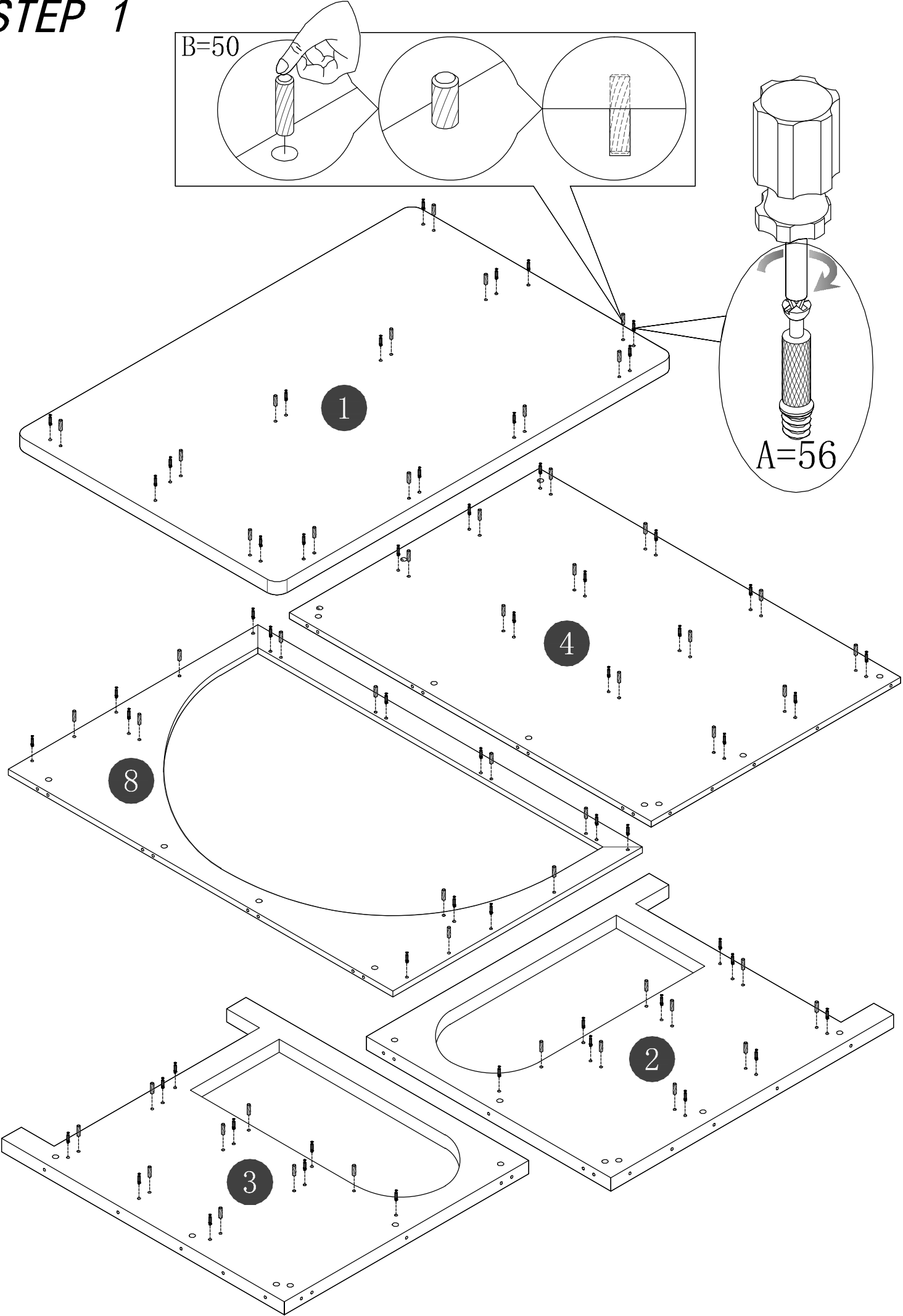
C=56



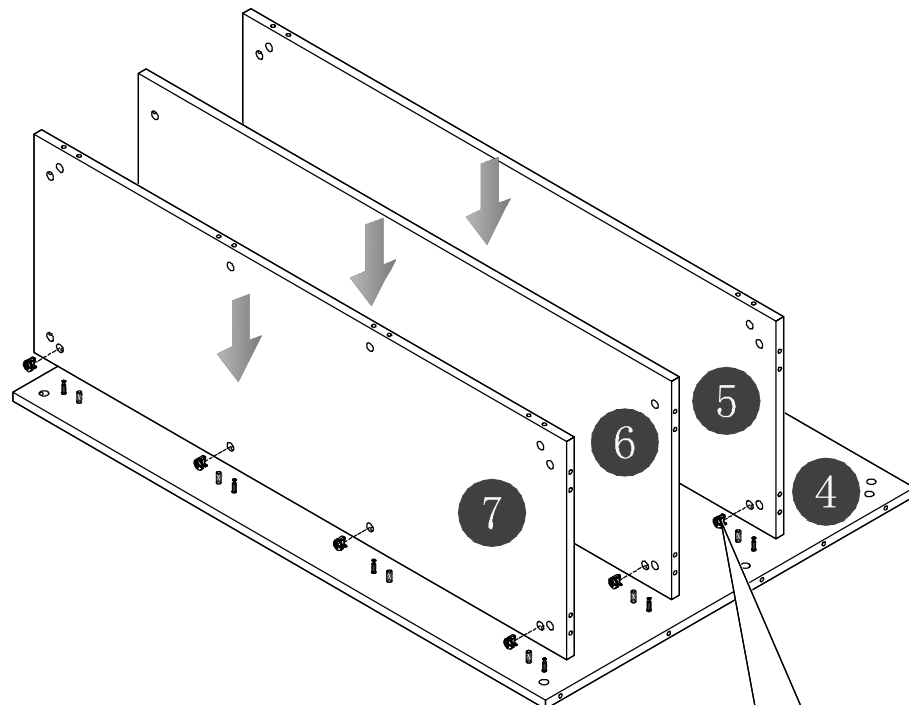
Φ 21

D=56

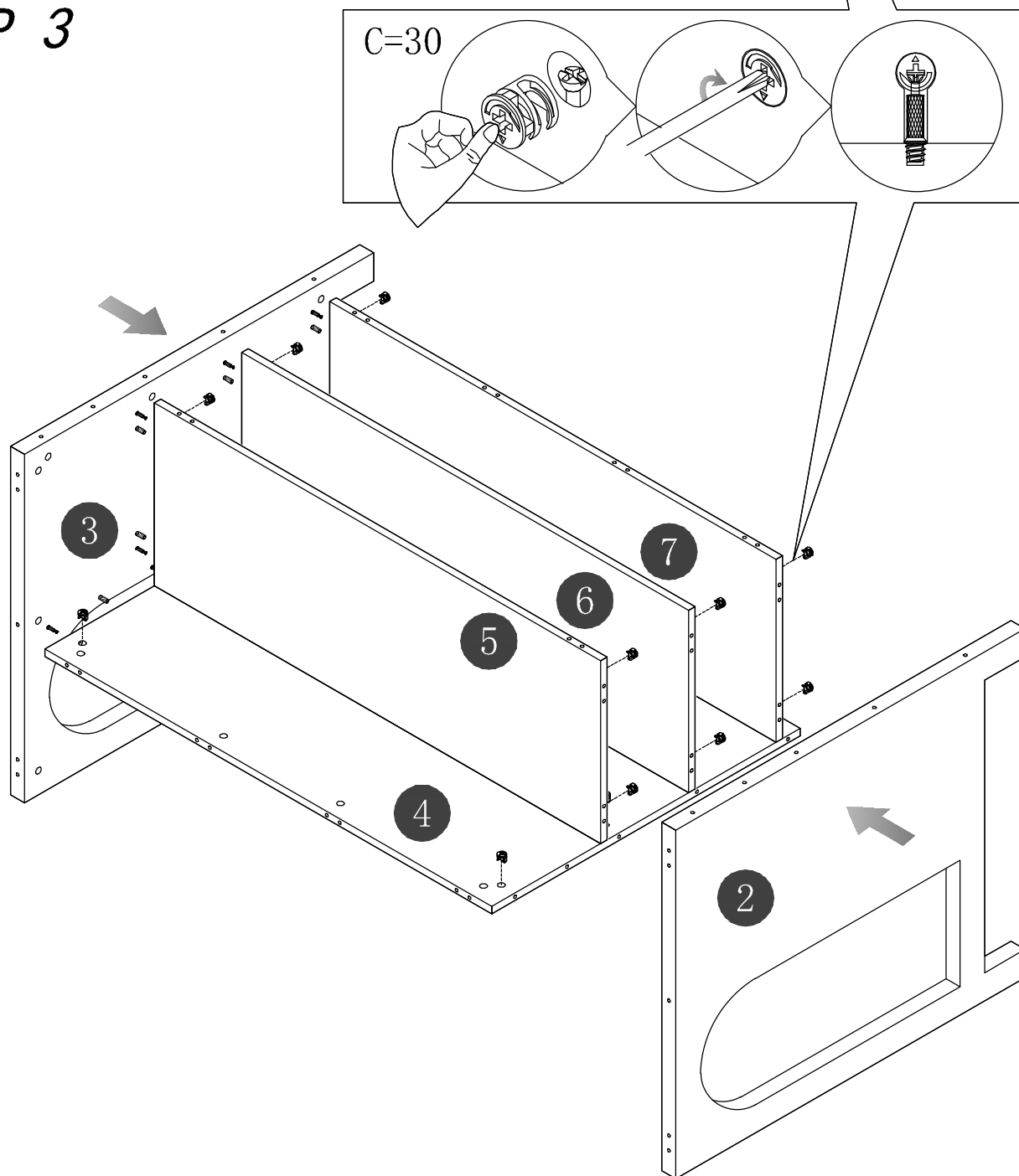
STEP 1



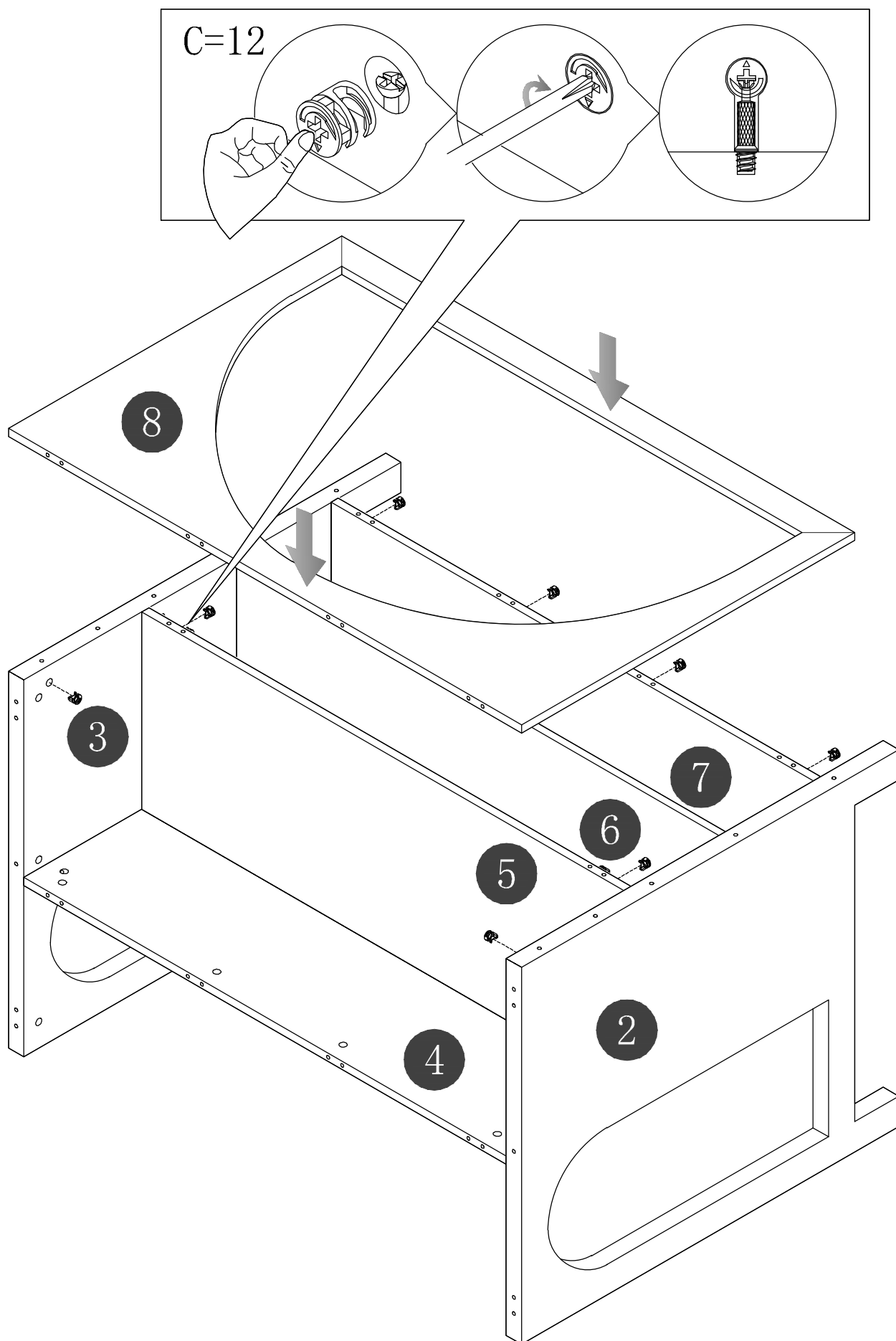
STEP 2



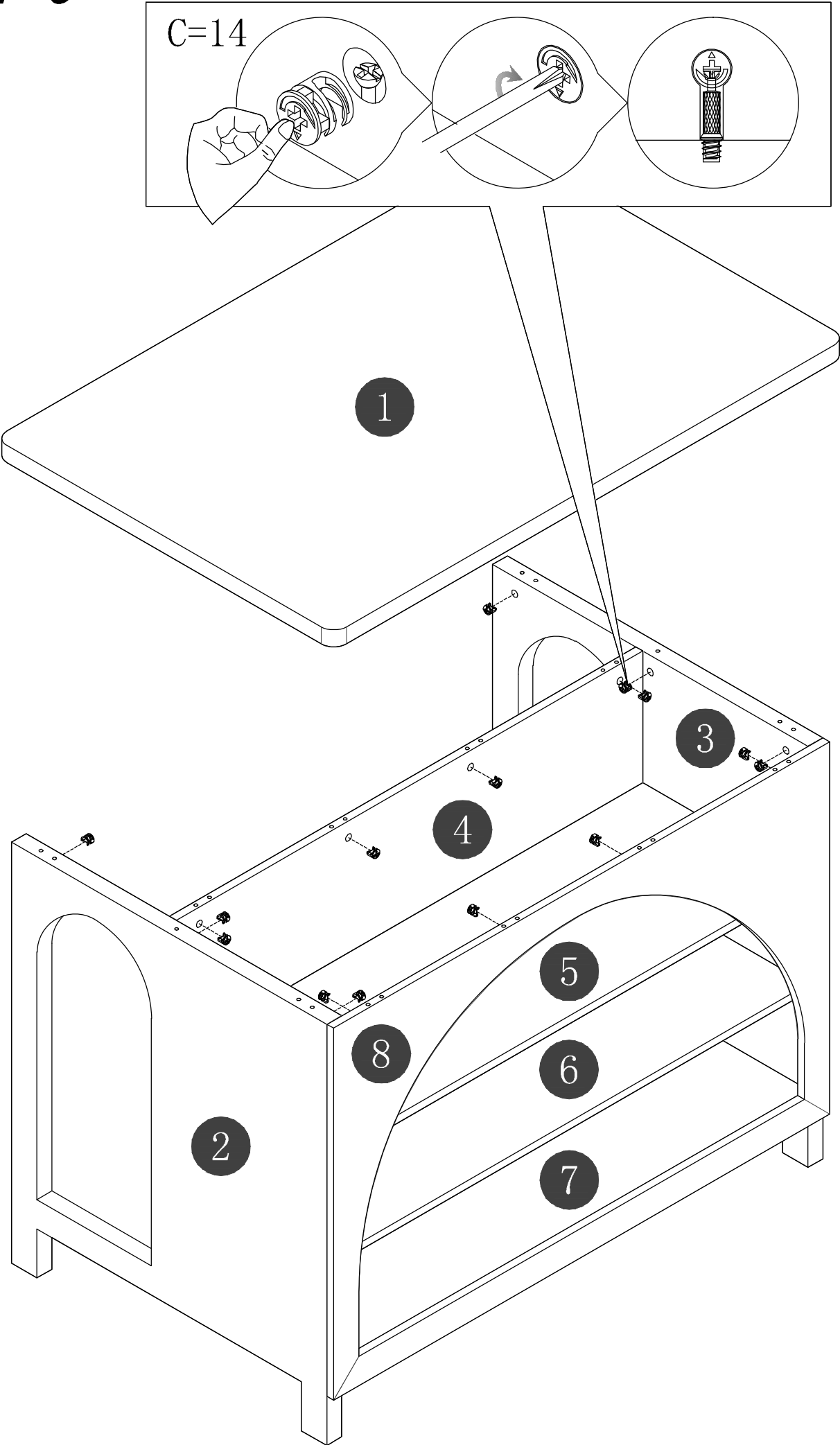
STEP 3



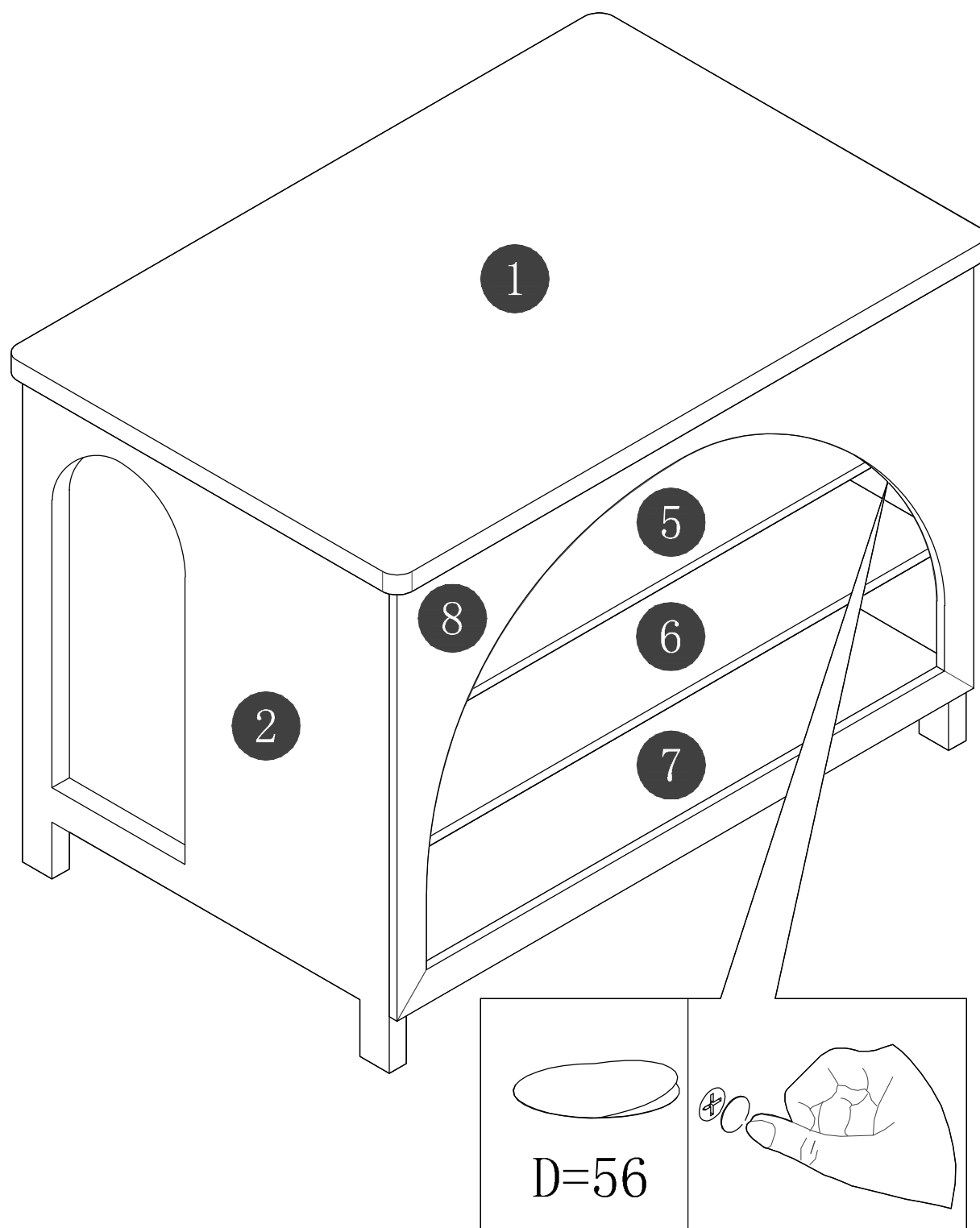
STEP 4



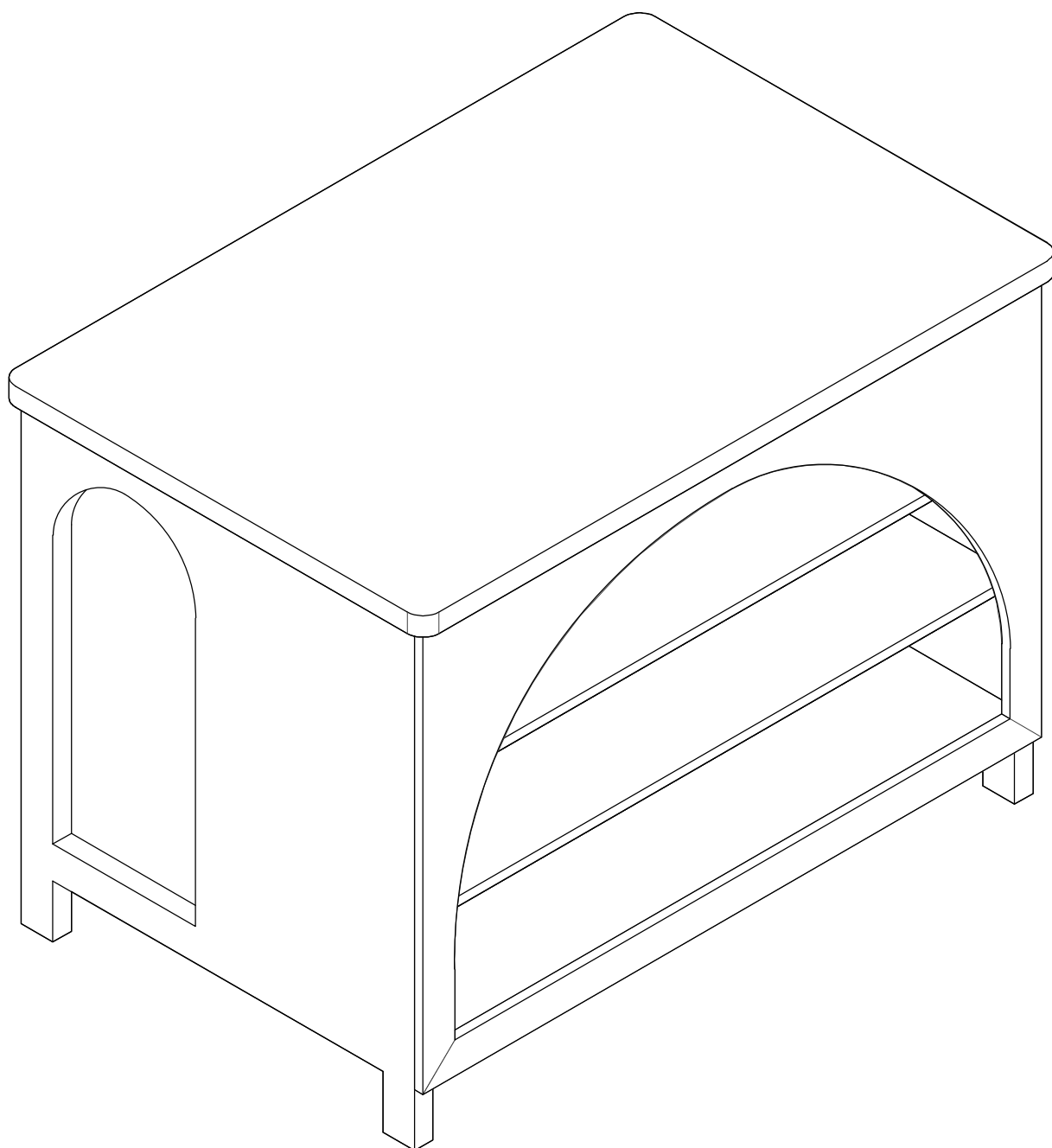
STEP 5



STEP 6



STEP 7



Finish