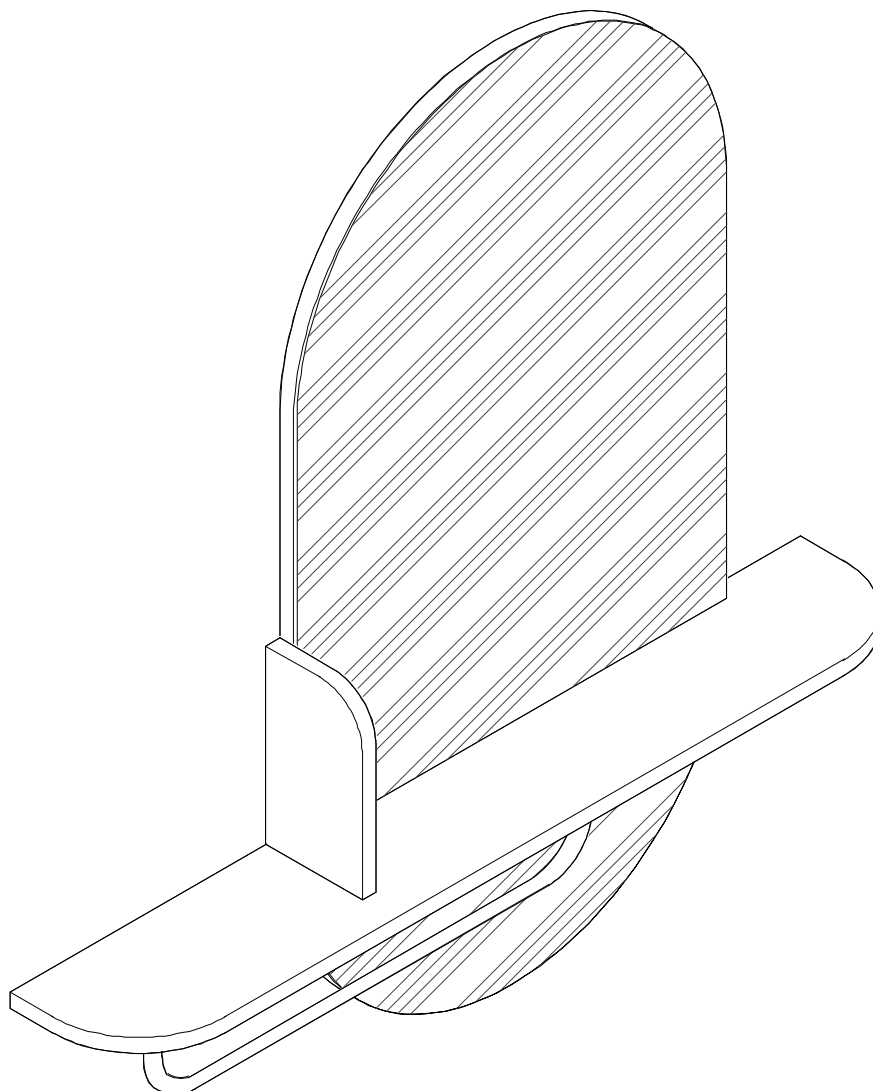


Assembly Instructions

Nordic Range



Loft

Product Code

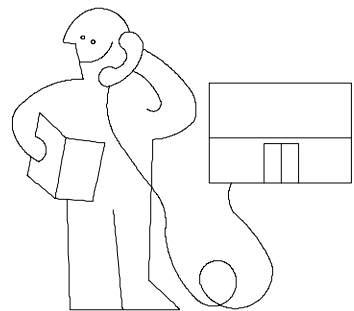
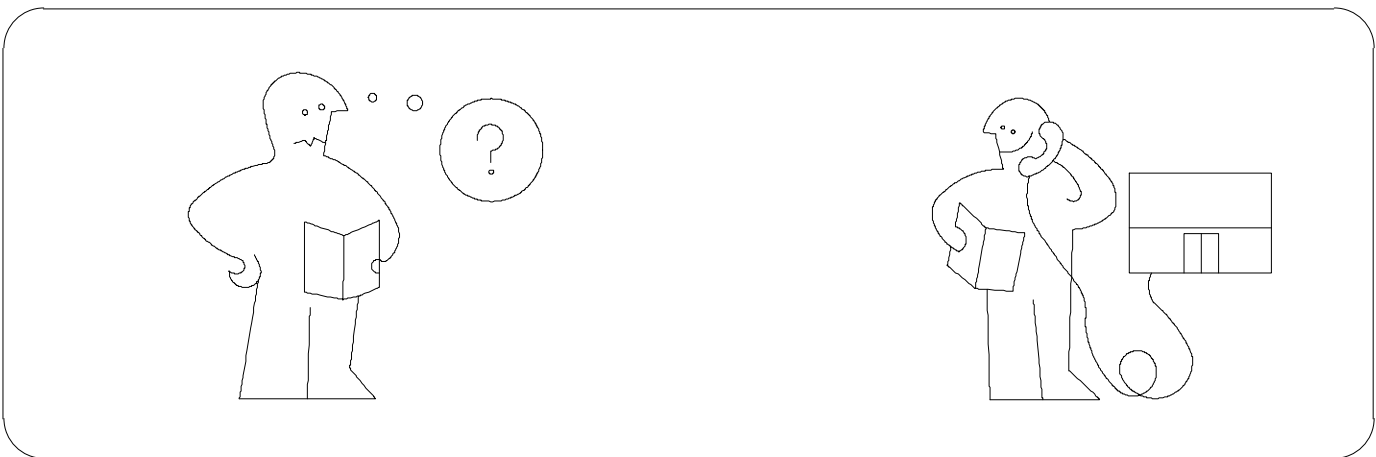
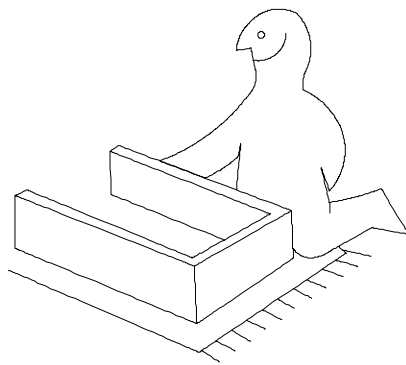
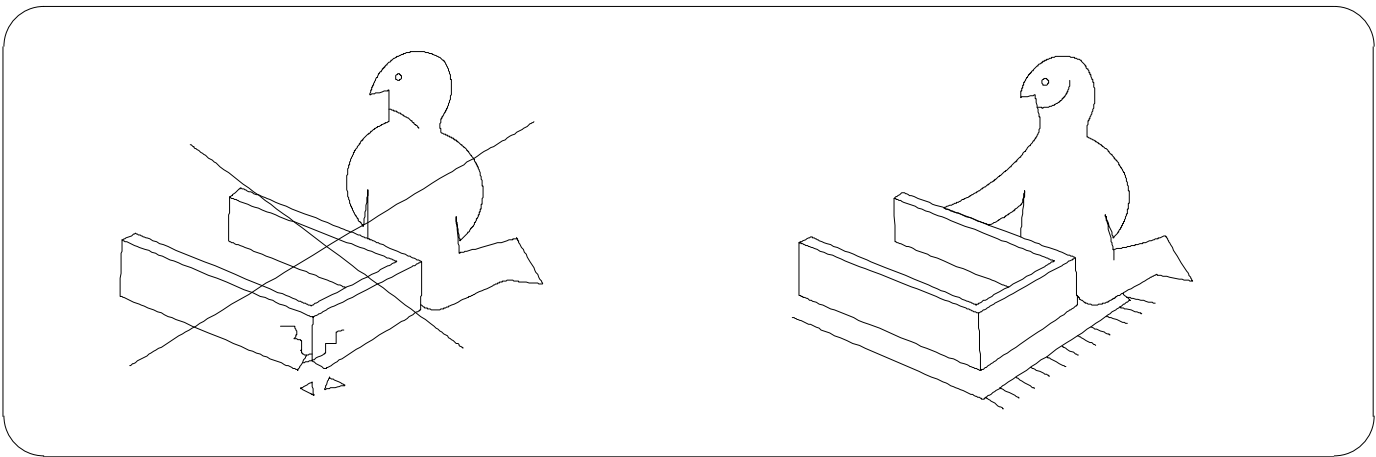
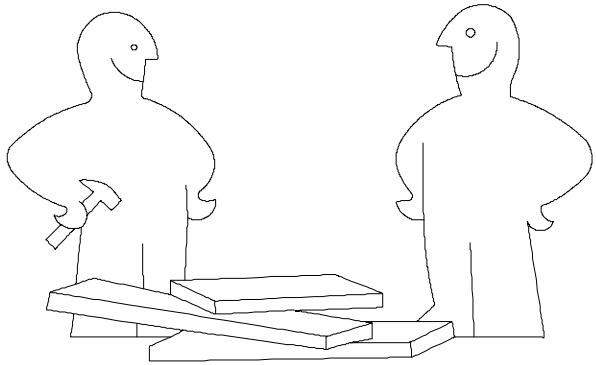
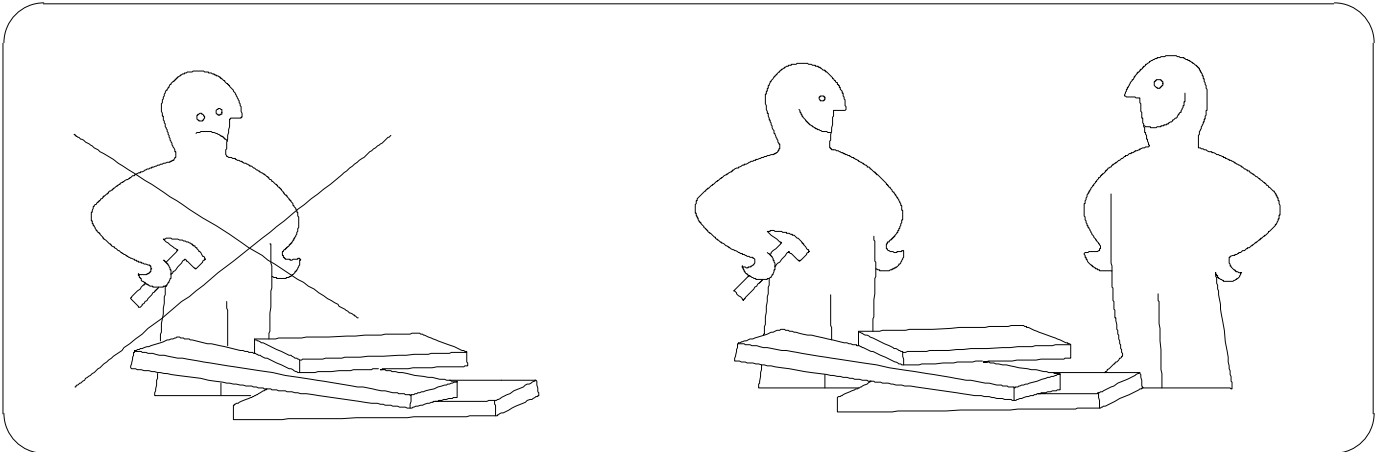
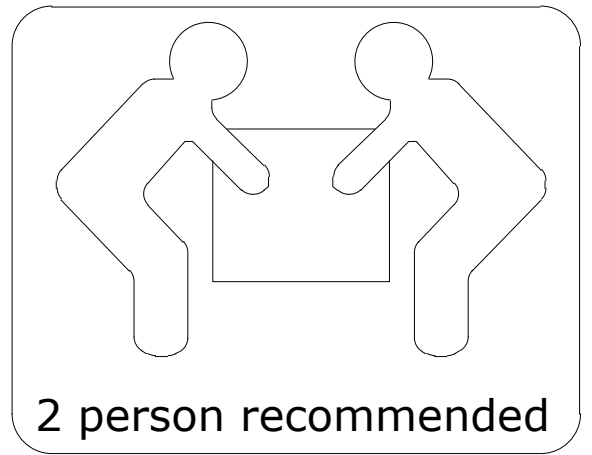
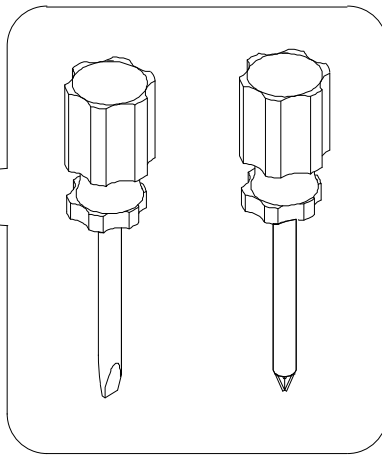
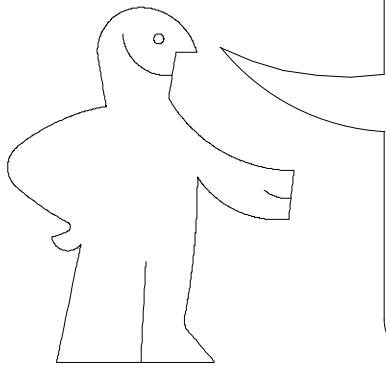
WMR-LOF-NOR-1~9727

Dimensions(W x D x H)

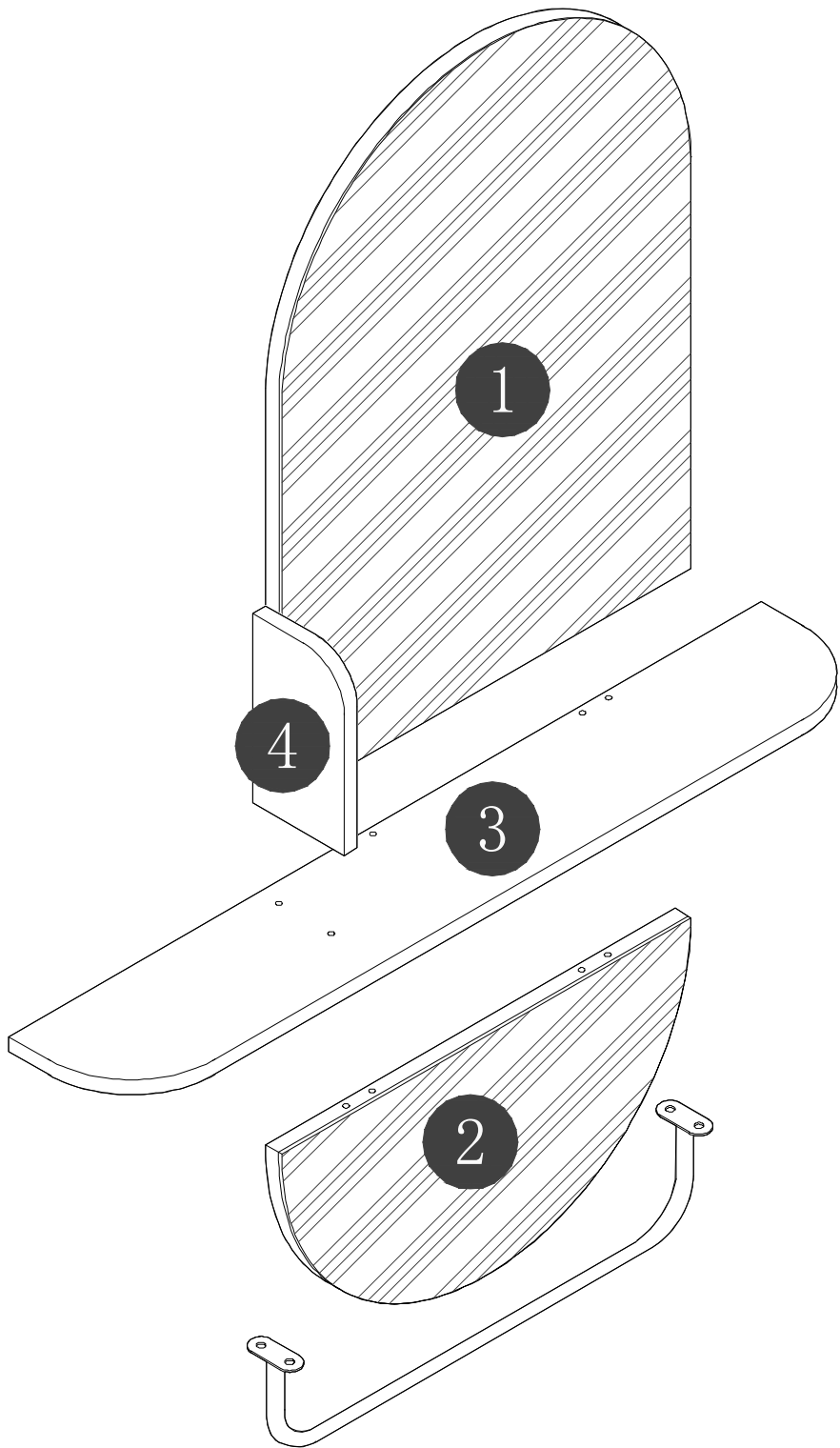
92*15*93cm

Important

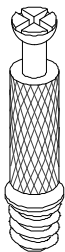
Please read through instruction carefully
Before assembly and keep for future reference.



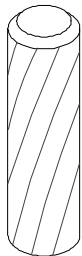
Panel No	Panel Sizes	Quantity
1	680*500*20	1
2	250*500*20	1
3	920*150*16	1
4	200*112*16	1



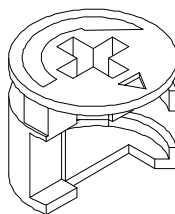
Fittings



A=6



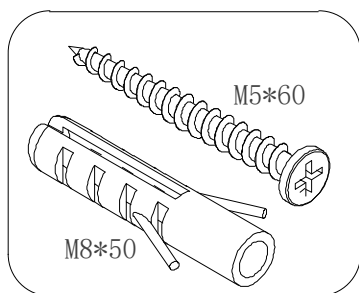
B=6



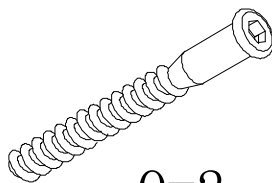
C=6



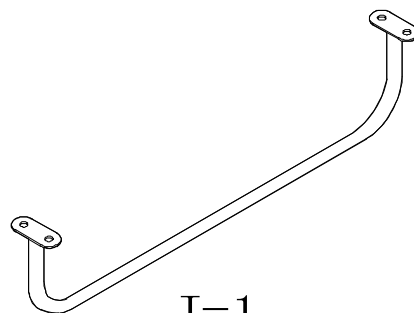
D=8



F=3



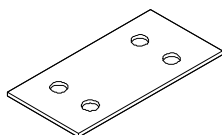
Q=2



J=1



H=1

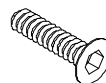


K=2



M4*12

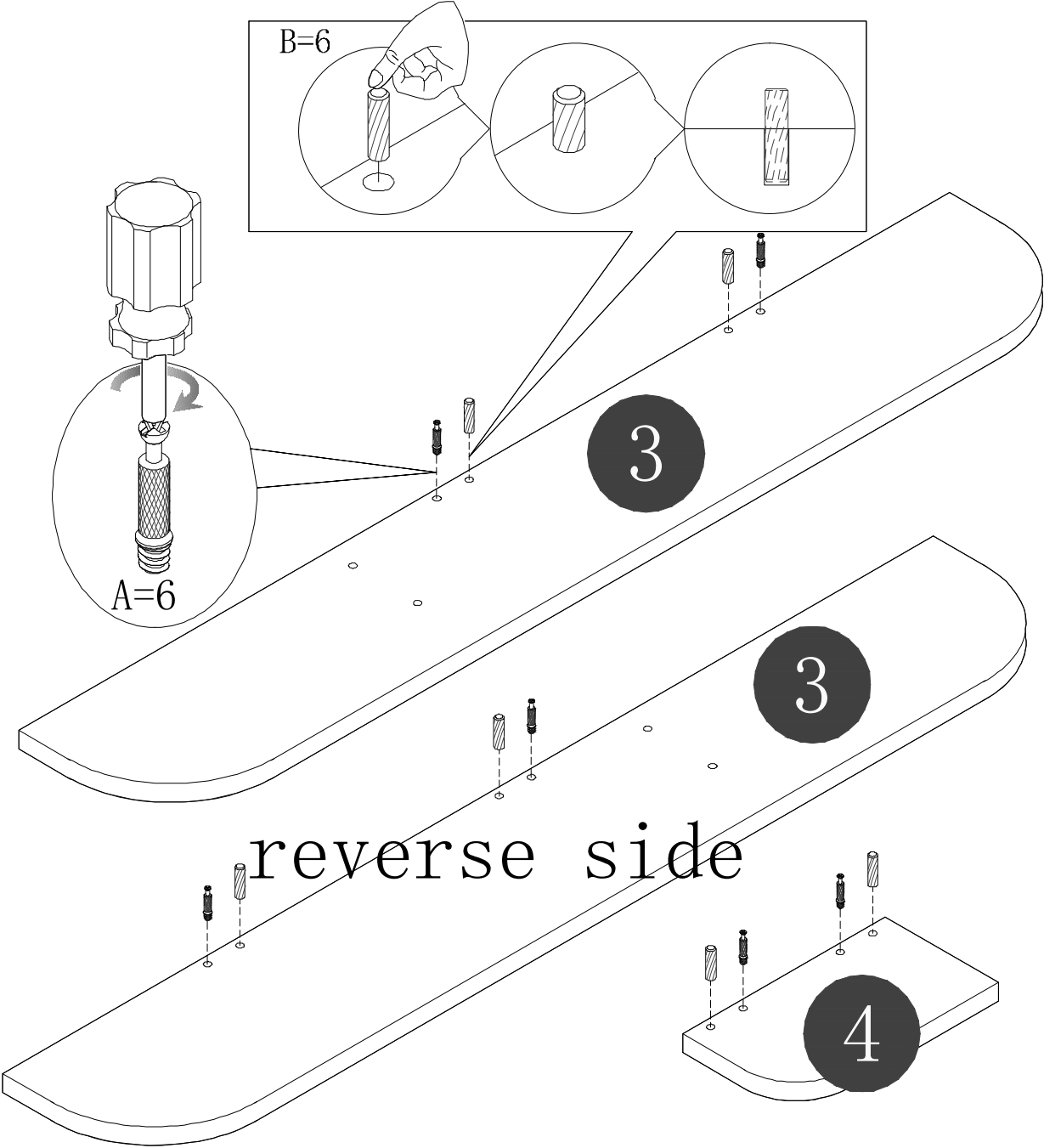
V1=8



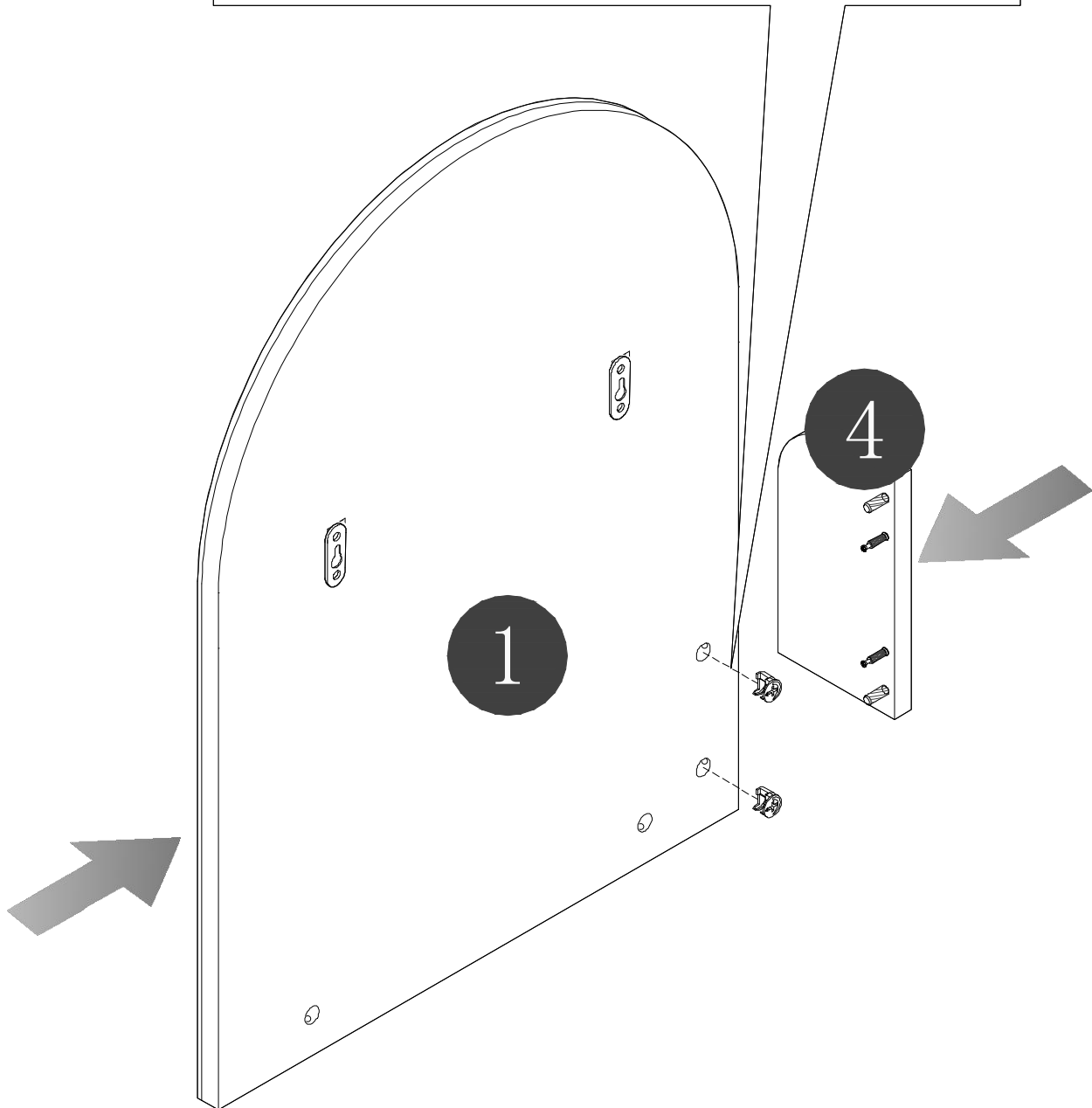
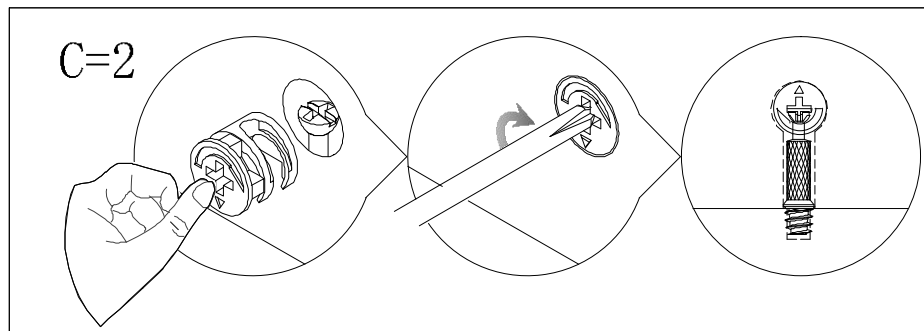
M6*16

G=4

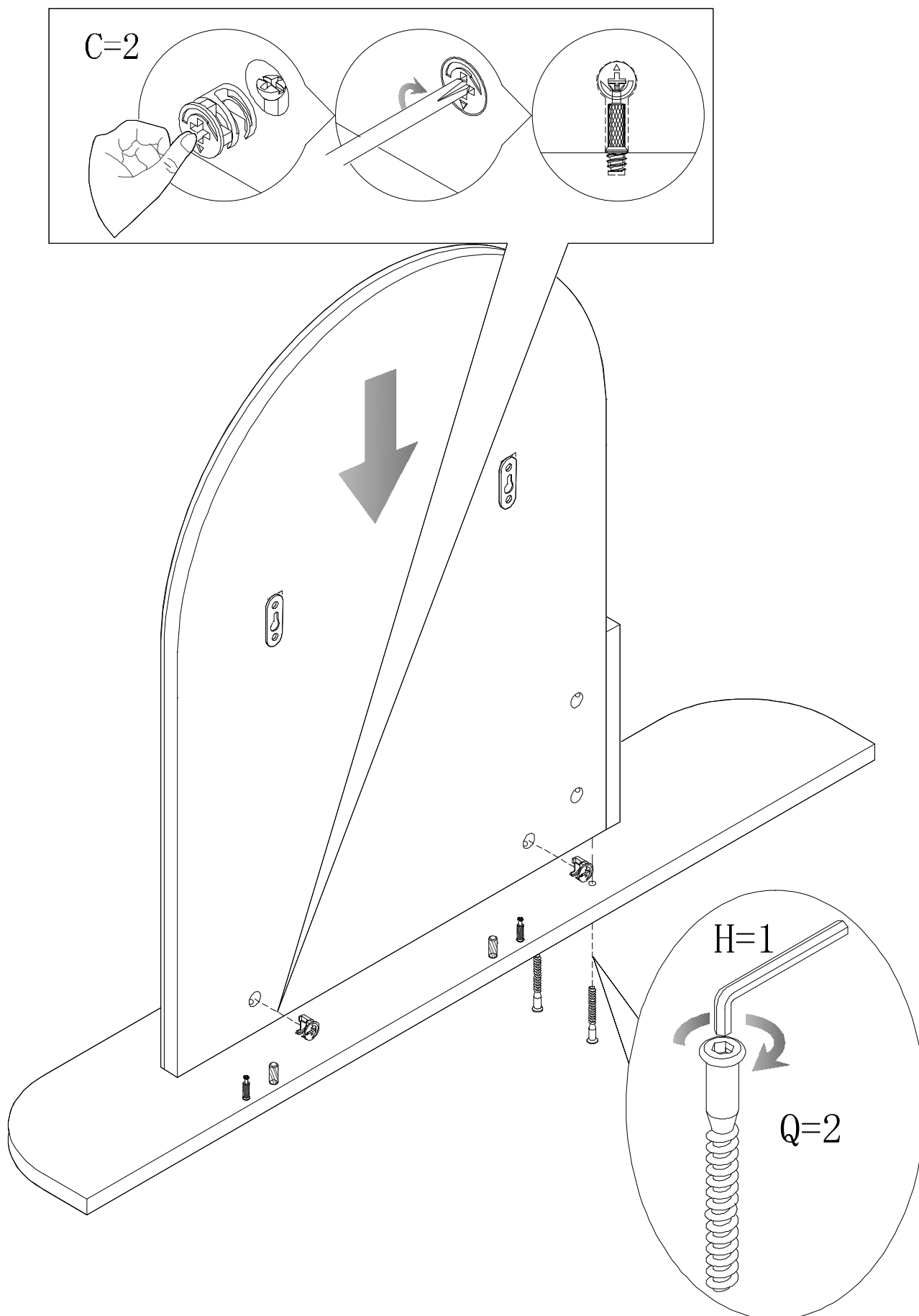
STEP 1



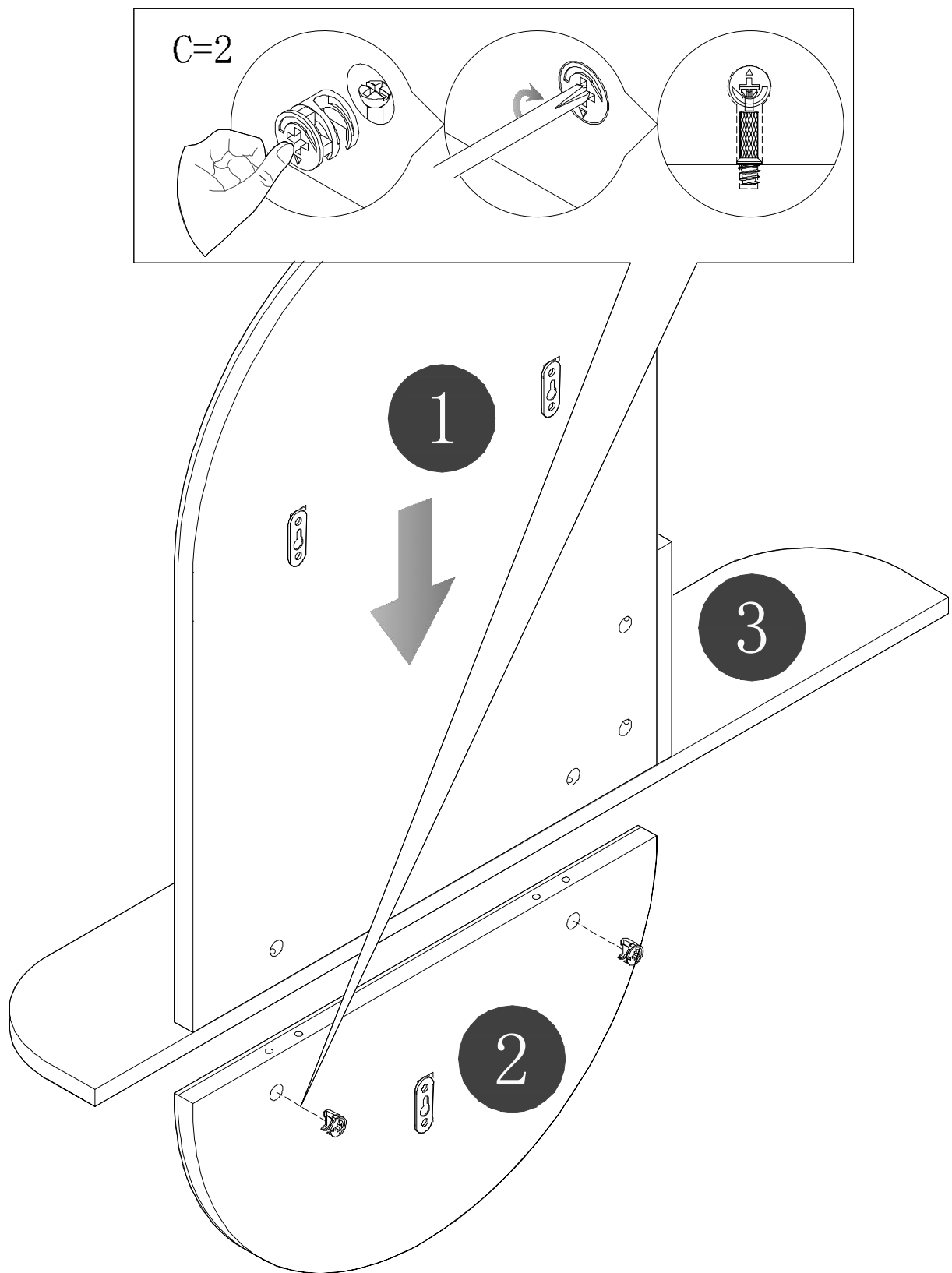
STEP 2



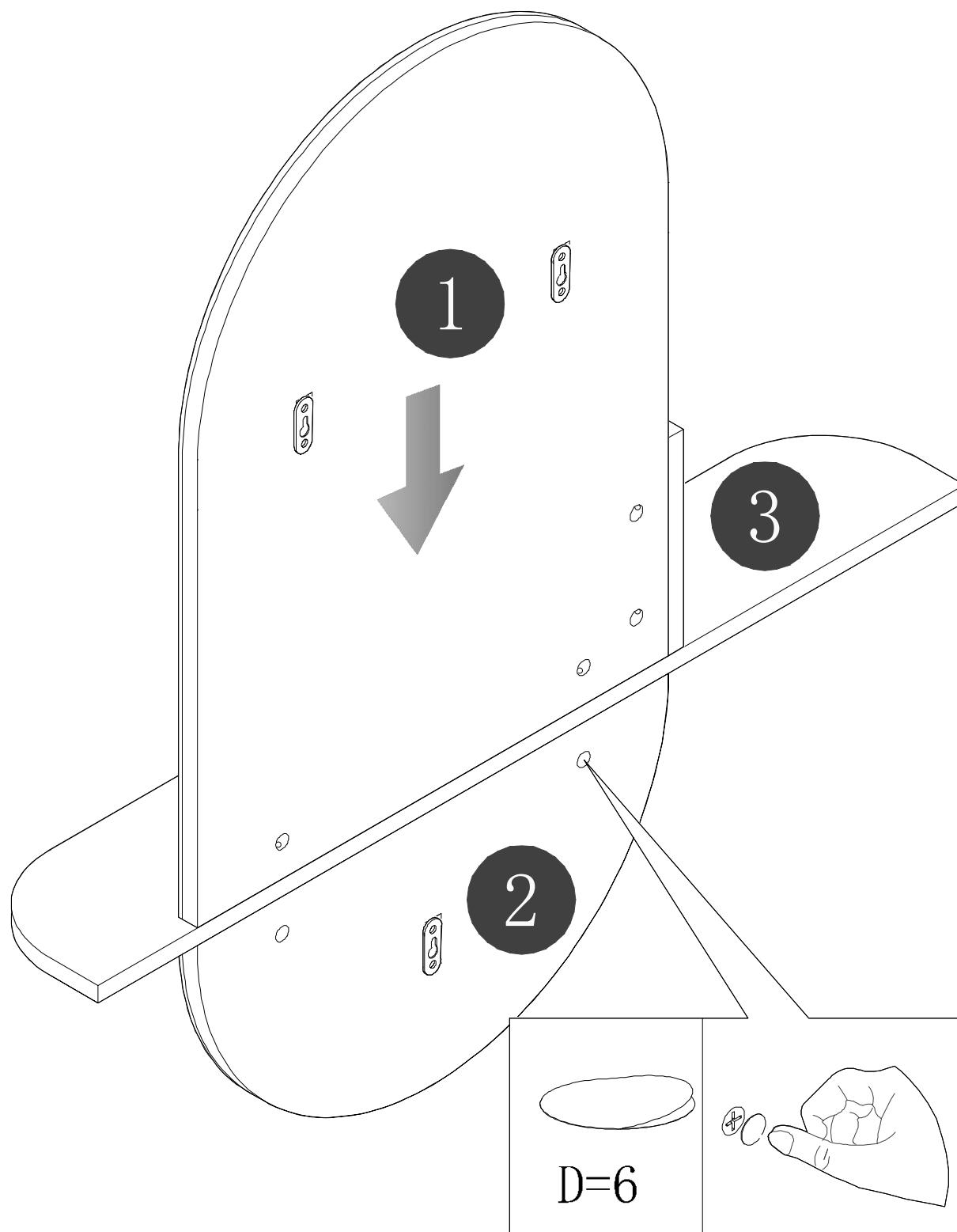
STEP 3



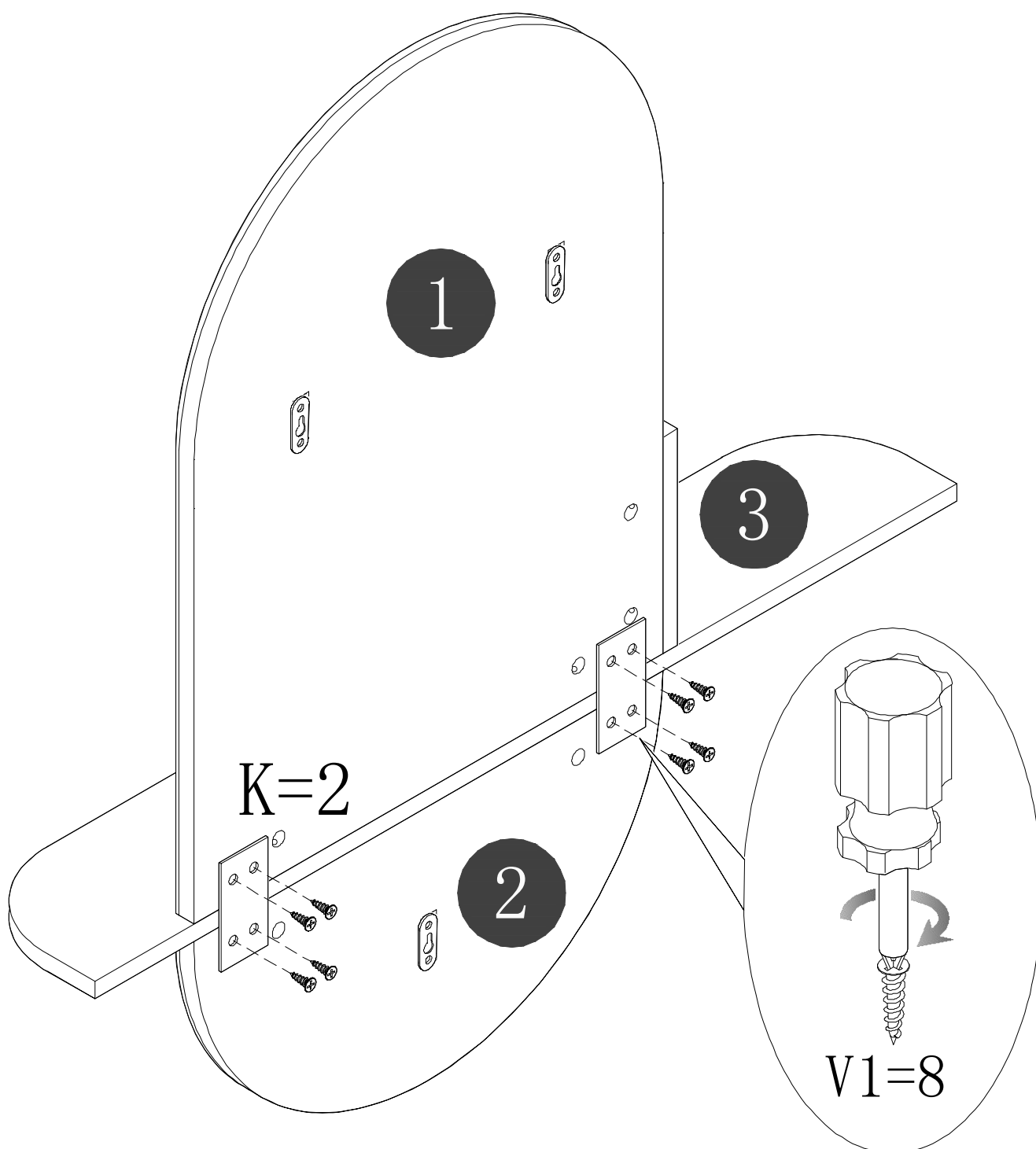
STEP 4



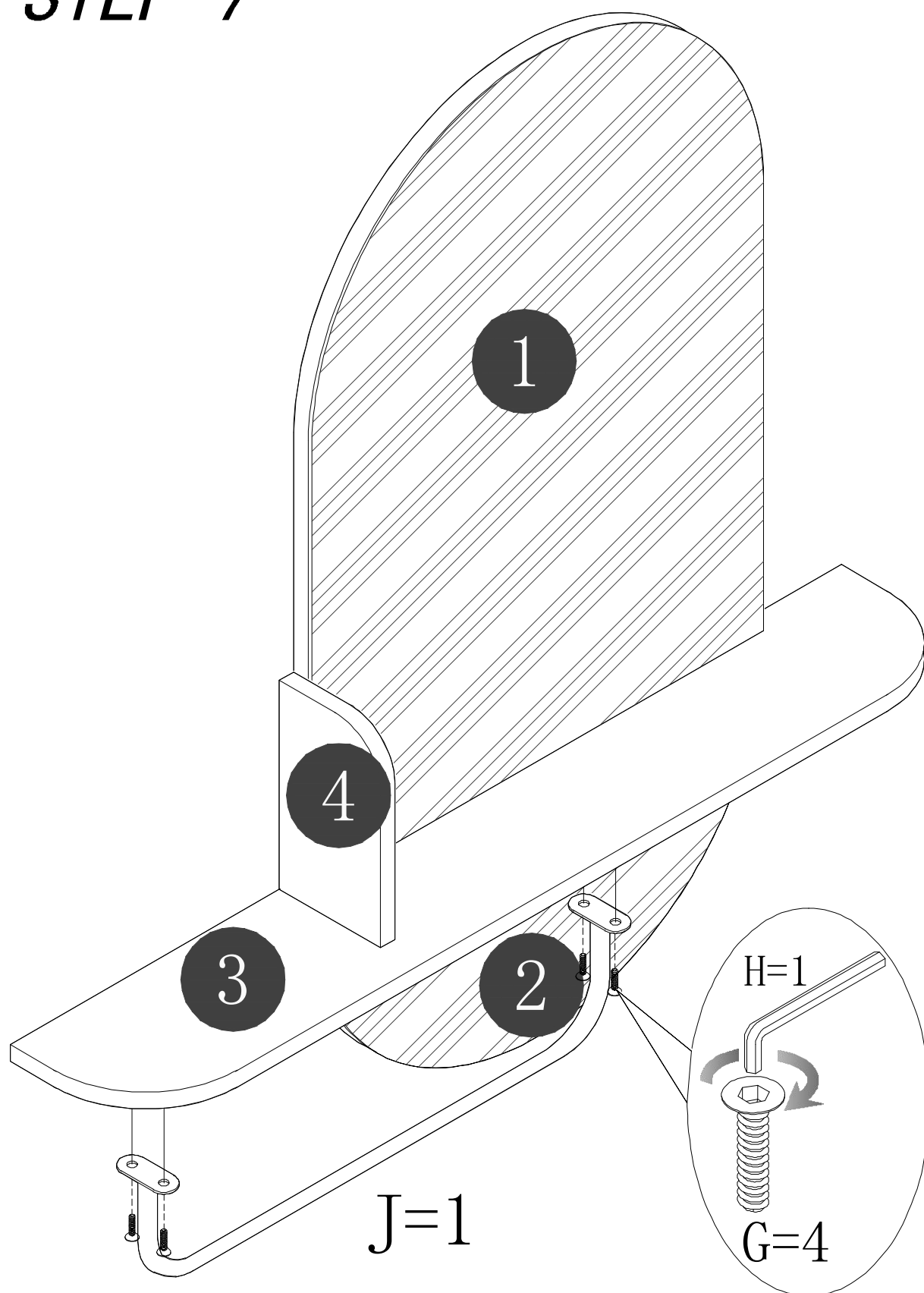
STEP 5



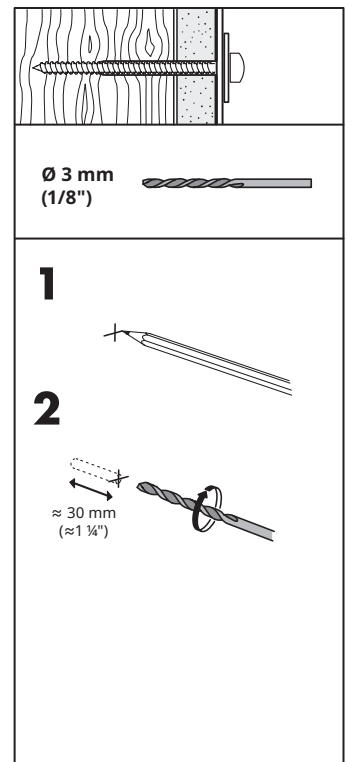
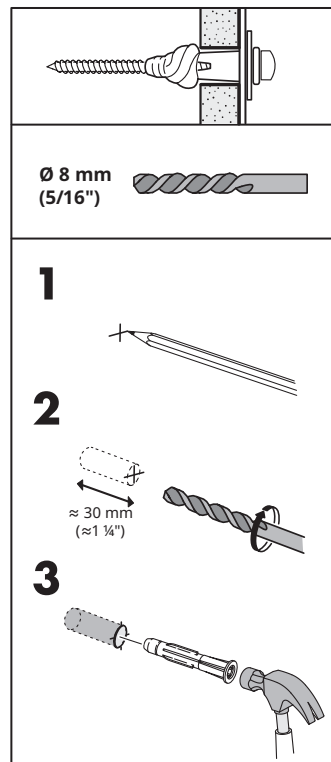
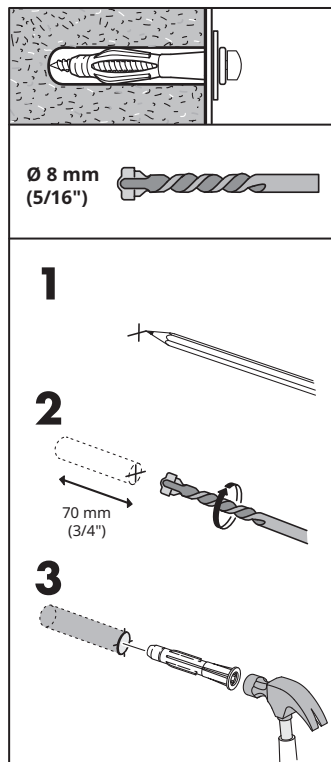
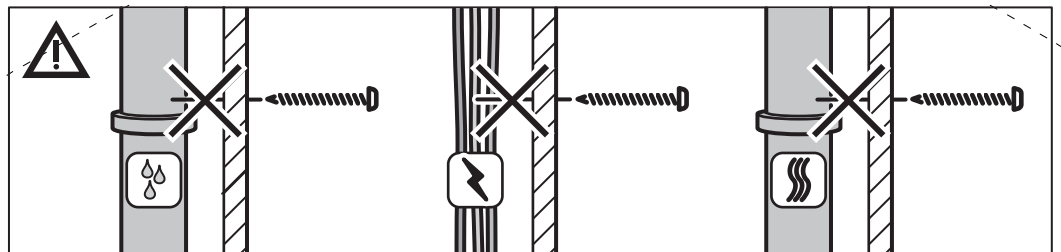
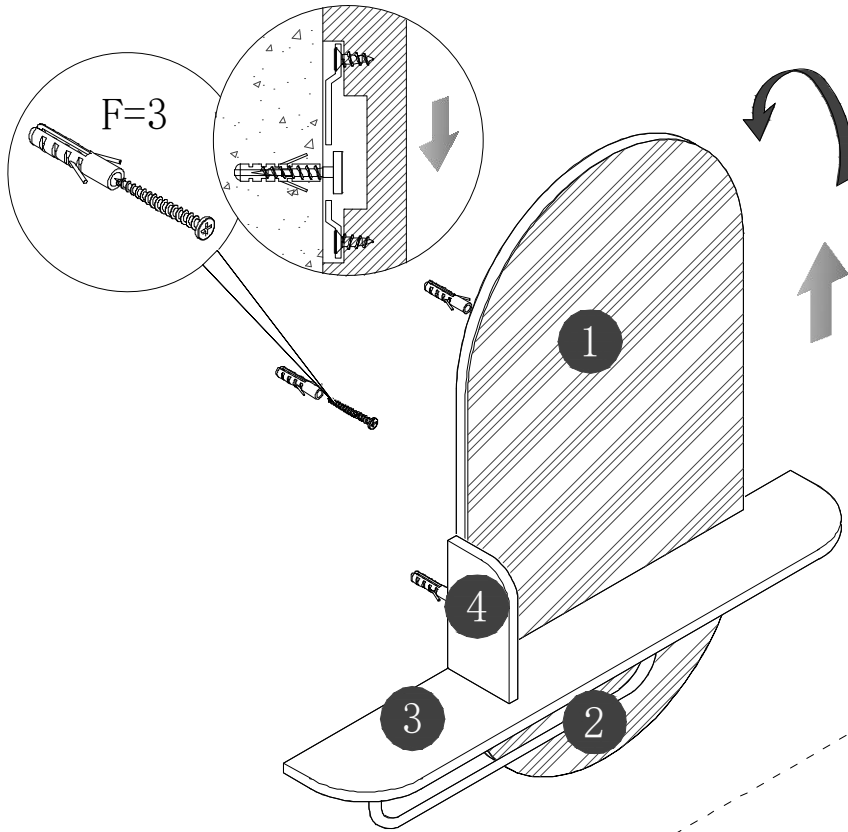
STEP 6



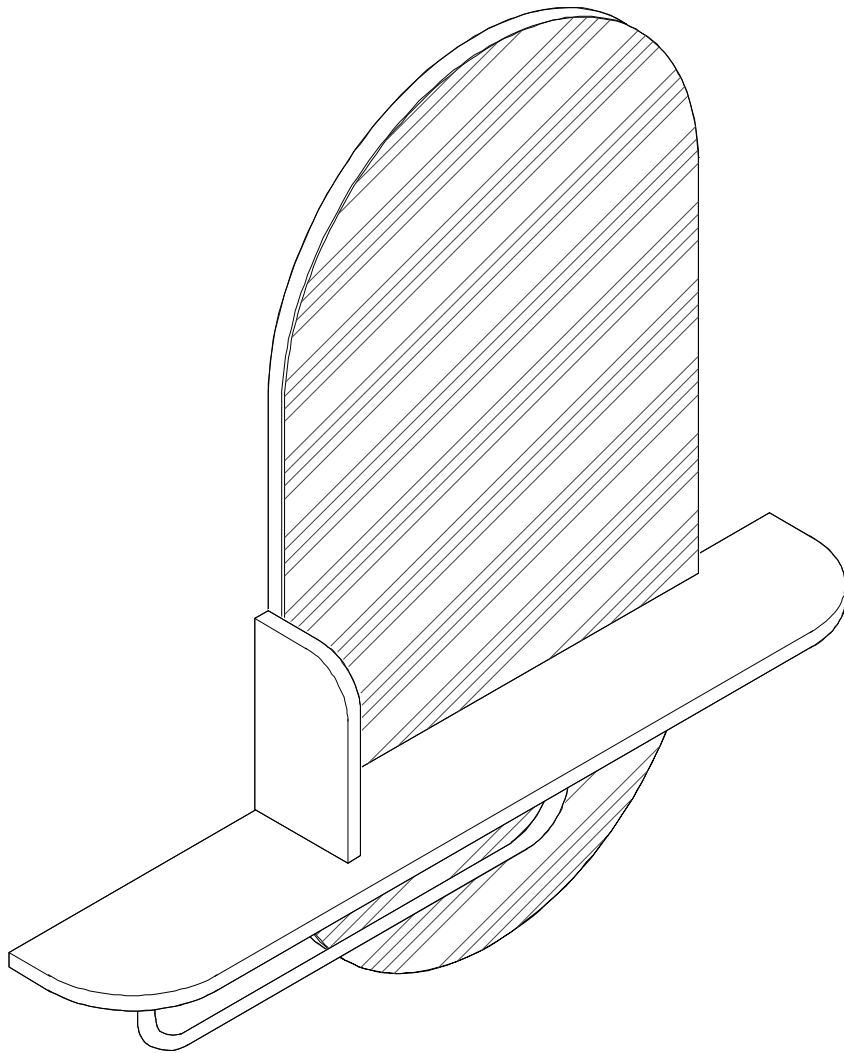
STEP 7



STEP 8



STEP 9



Finish