

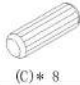





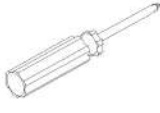
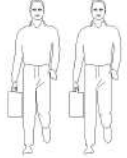

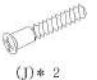
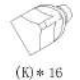

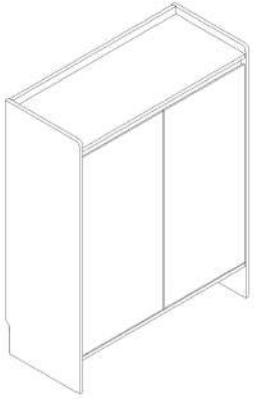
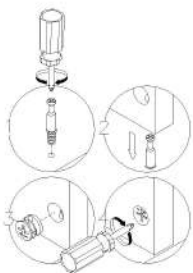


LINSY 林氏家居		五金表/Hardware list				部件表/Parts List					
安装示意图/Assembly Instruction						编号NO.	名称Name	规格 (mm) Specification	数量QTY	材质Material	
产品名称 Model NO.	OV2N-C 鞋柜0.8m	(A)* 19 二合一螺杆 2-in-1-screw	(B)* 19 大三合一锁饼 Three-in-one large lock	(C)* 8 木榫08x30mm wood tenon	(D)* 2 夹板条-L*769 splint strip	1	面板Top panel	770*329*15	1	人造板 WBP	
产品规格 Specification	800*350*1031mm					2	底板Bottom board	770*349*15	1	人造板 WBP	
安装工具 Tool	安装人数 Installer	(E)* 3 透气孔盖 Vent cover	(F)* 13 自攻螺丝M3.5x16mm Self-tapping screw	(G)* 4 脚垫-灰色 Footrest - Grey	(H)* 2 家具防倒器-白色 Anti-fall device - White	3	右侧板Side board(R)	1028*350*15	1	人造板 WBP	
						4	左侧板Side board(L)	1028*350*15	1	人造板 WBP	
		(I)* 4 缓冲门较大弯-杯径35 Hinge big beads-diameter 35	(J)* 2 过山丝-M7x38mm Self-tapping screw polyaniline	(K)* 16 三角层板托 Triangular shelf support	(L)* 13 背板扣 Back Plate Buckle-White	5	大层板Big shelf	767*312*15	4	人造板 WBP	
							6	后拉条Back brace	770*65*15	1	人造板 WBP
							7	前拉条Front brace	770*65*15	1	人造板 WBP
							8	背板Back board	780*275*5	3	人造板 WBP
							9	门板Door board	811*382*15	2	人造板 WBP

OV2N-C 鞋柜0.8m

安装方法

Installation method



二合一
two-in-one

大弯big bend

中弯middle bending

直弯straight bending



调节上下
Adjust up and down

调节左右
Adjust left and right

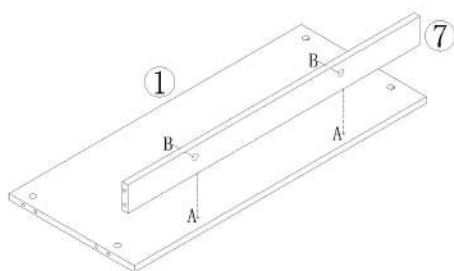
调节前门
Before and after adjustment
门铰
Hinge



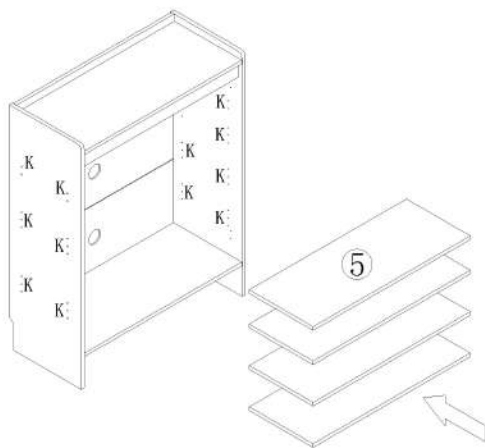
(A)*2



(B)*2



(K)*16



1



(A)*16



(B)*16



(C)*8



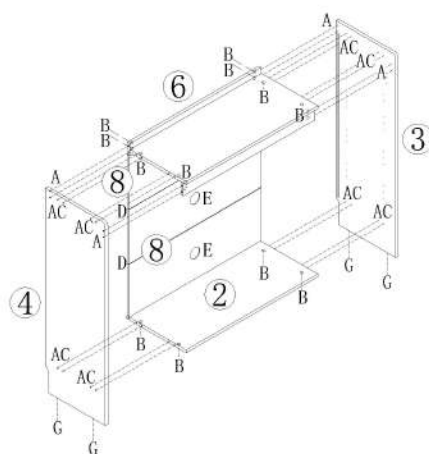
(E)*3



(G)*4



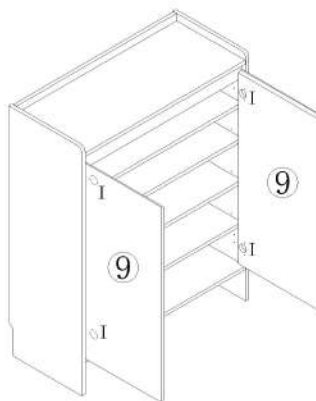
(D)*2



3



(I)*4



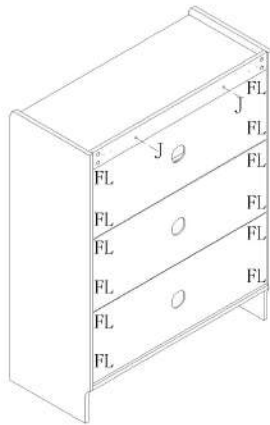
2

4

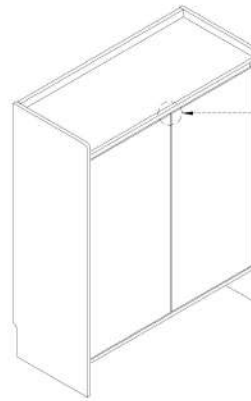
OV2N-C 鞋柜0.8m

安装方法
Installation method

-  (J)*2
-  (F)*12
-  (L)*12



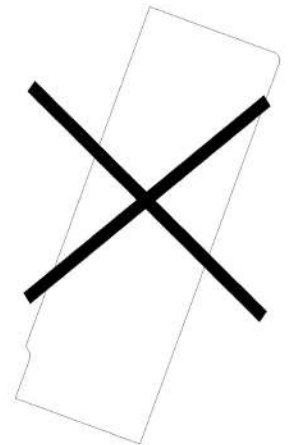
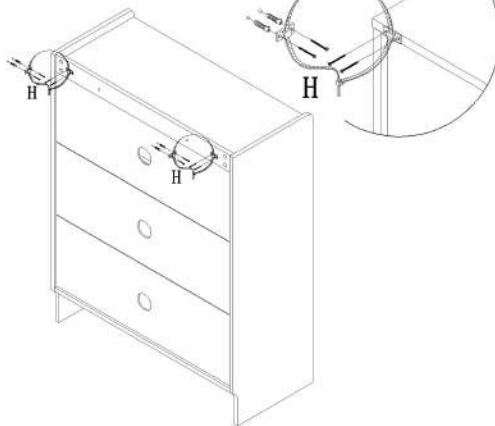
5



此处缝隙设计为开启、门板使用
小心夹伤
The gap here is designed to be open
Use of opening and door panels
Be careful of pinch injuries

6

-  (H)*2



7