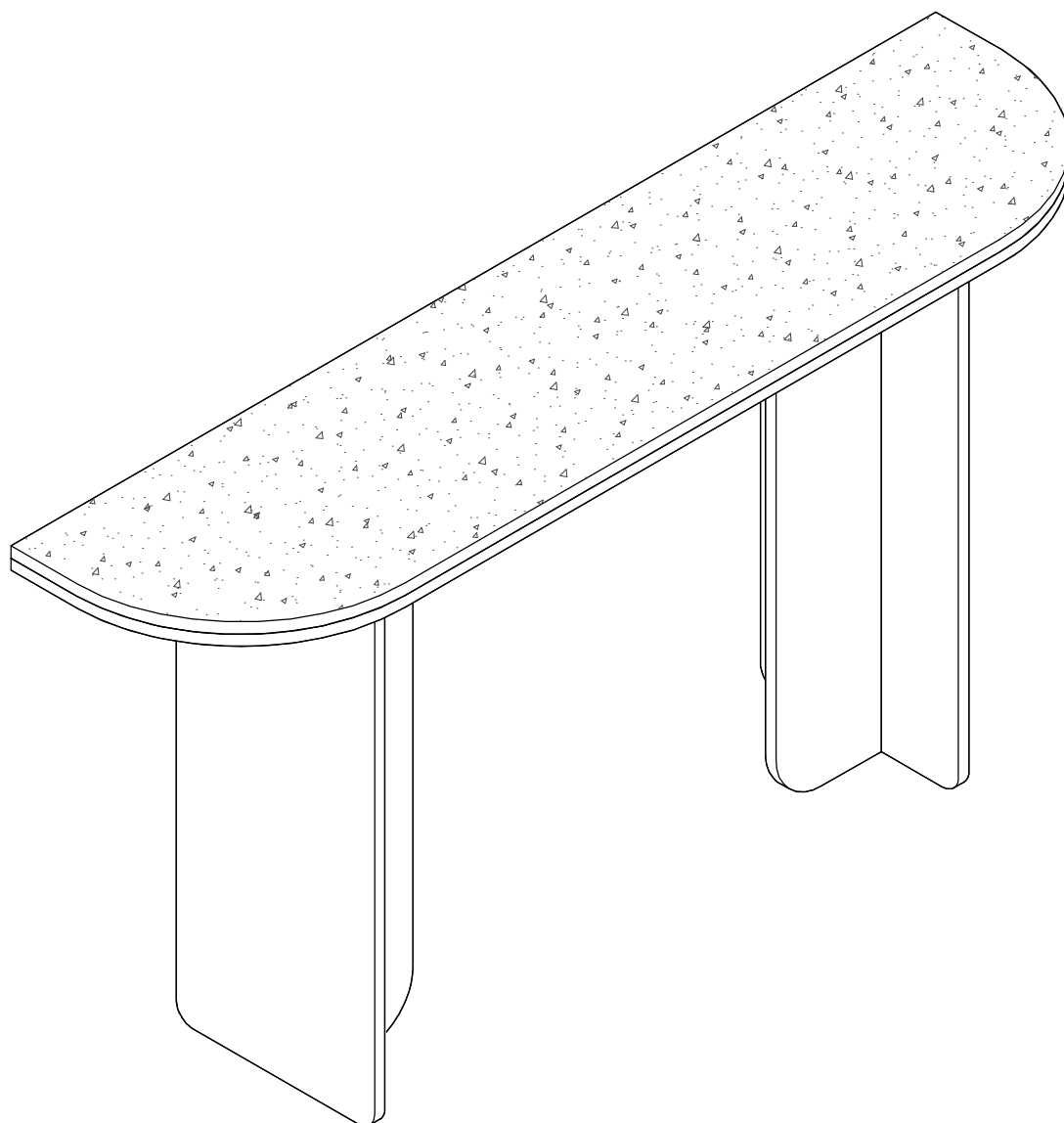


Assembly Instructions

Japandi Range



Loft

Product Code

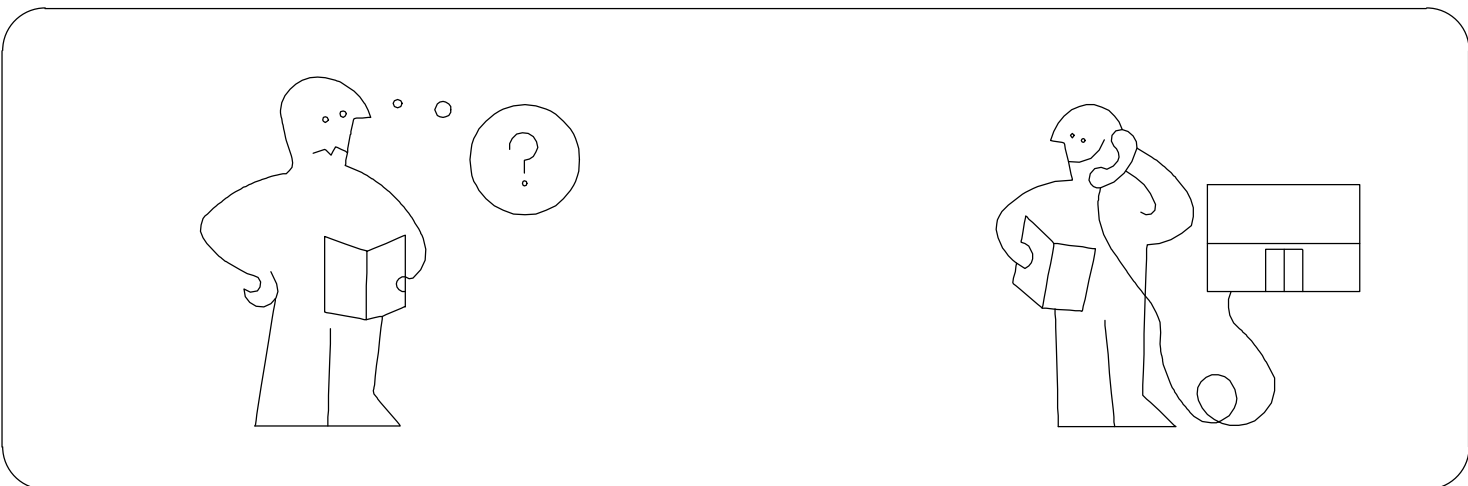
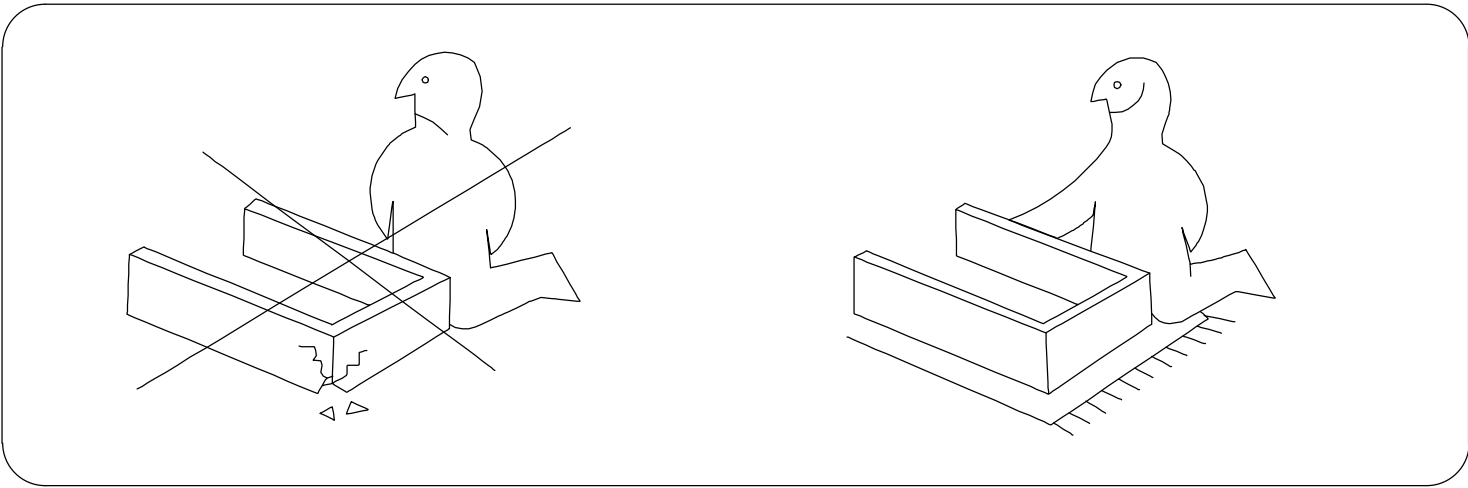
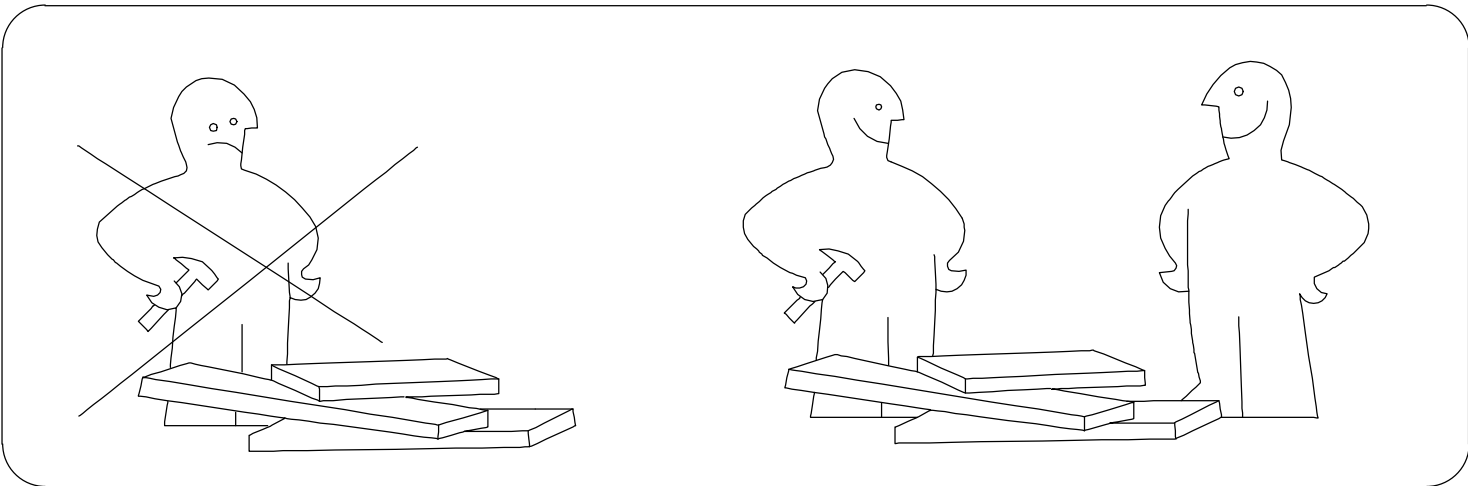
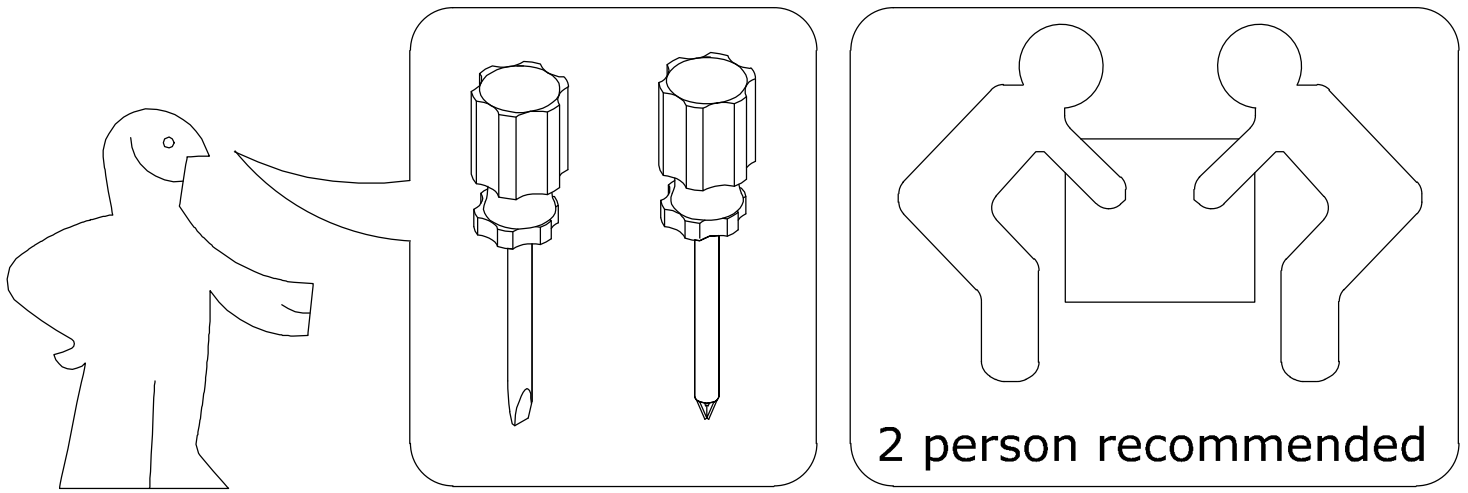
CON-LOF-JAP-1~9720

Dimensions(W x D x H)

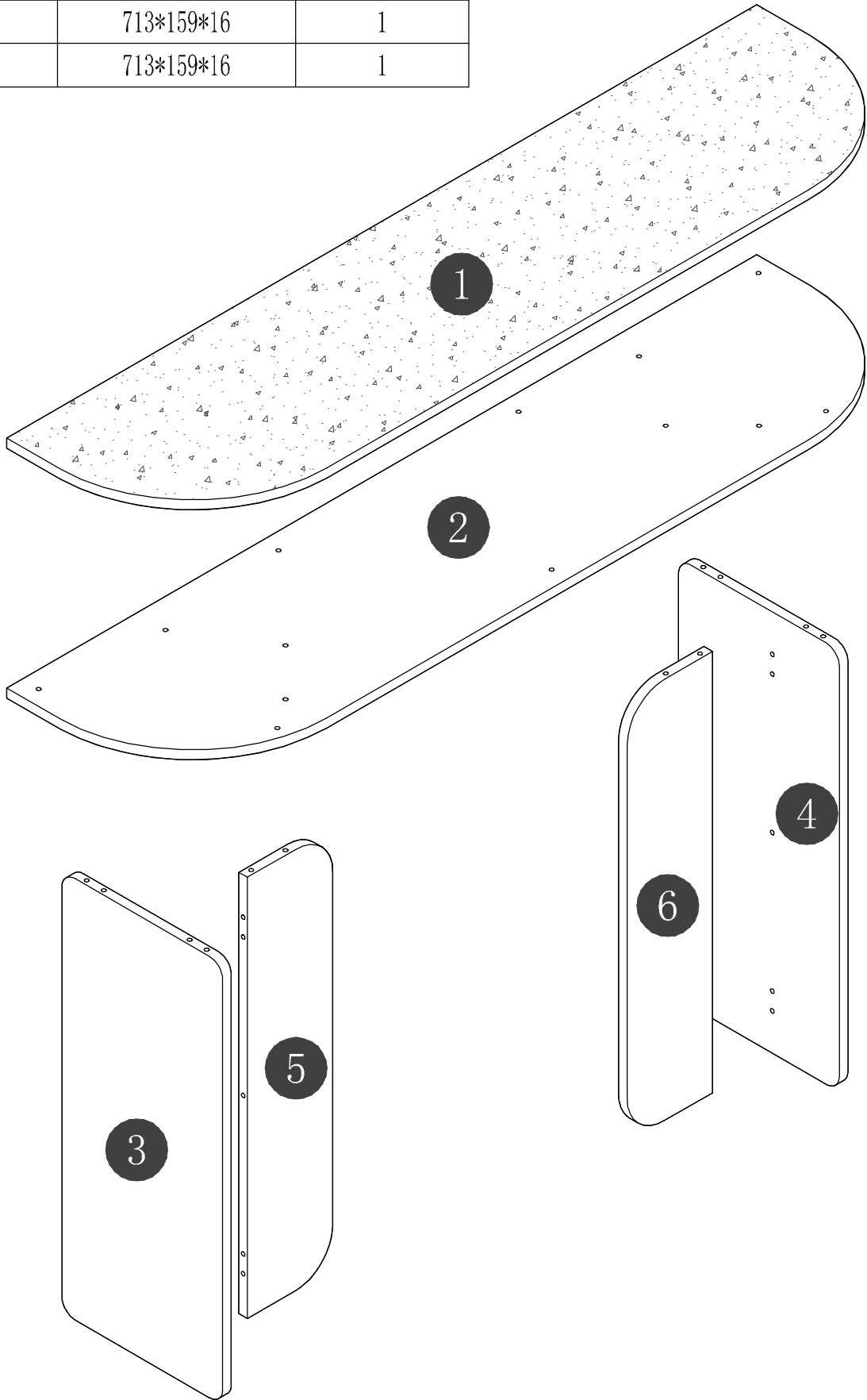
140*35*75cm

Important

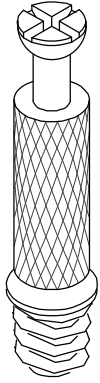
Please read through instruction carefully
Before assembly and keep for future reference.



Panel No	Panel Sizes	Quantity
1	1400*350*16	1
2	1398*348*16	1
3	713*300*16	1
4	713*300*16	1
5	713*159*16	1
6	713*159*16	1

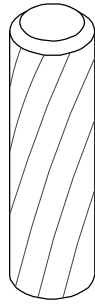


Fittings



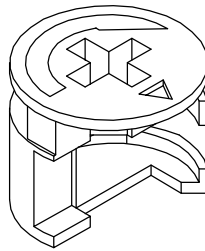
M6*40

A=6



$\Phi 8*30$

B=10



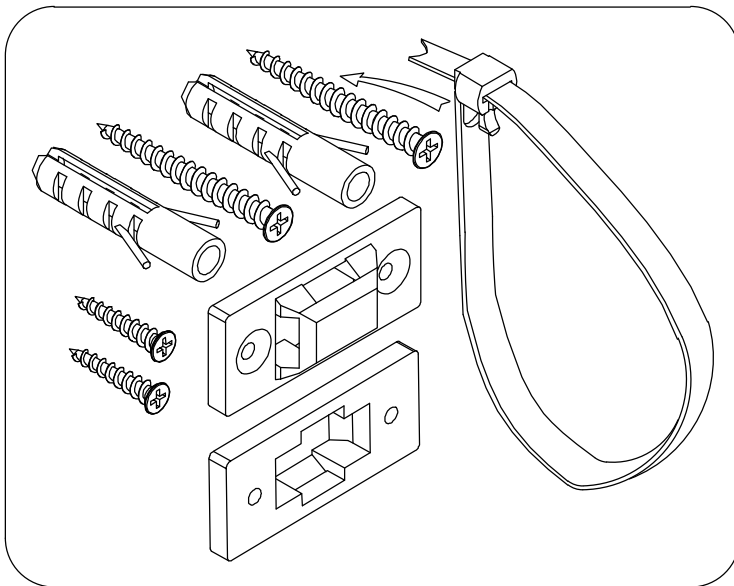
$\Phi 15*12$

C=6

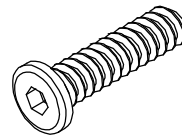


$\Phi 21$

D=13

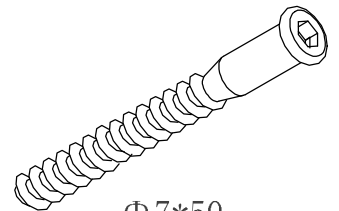


F=1



M6*25

G=7



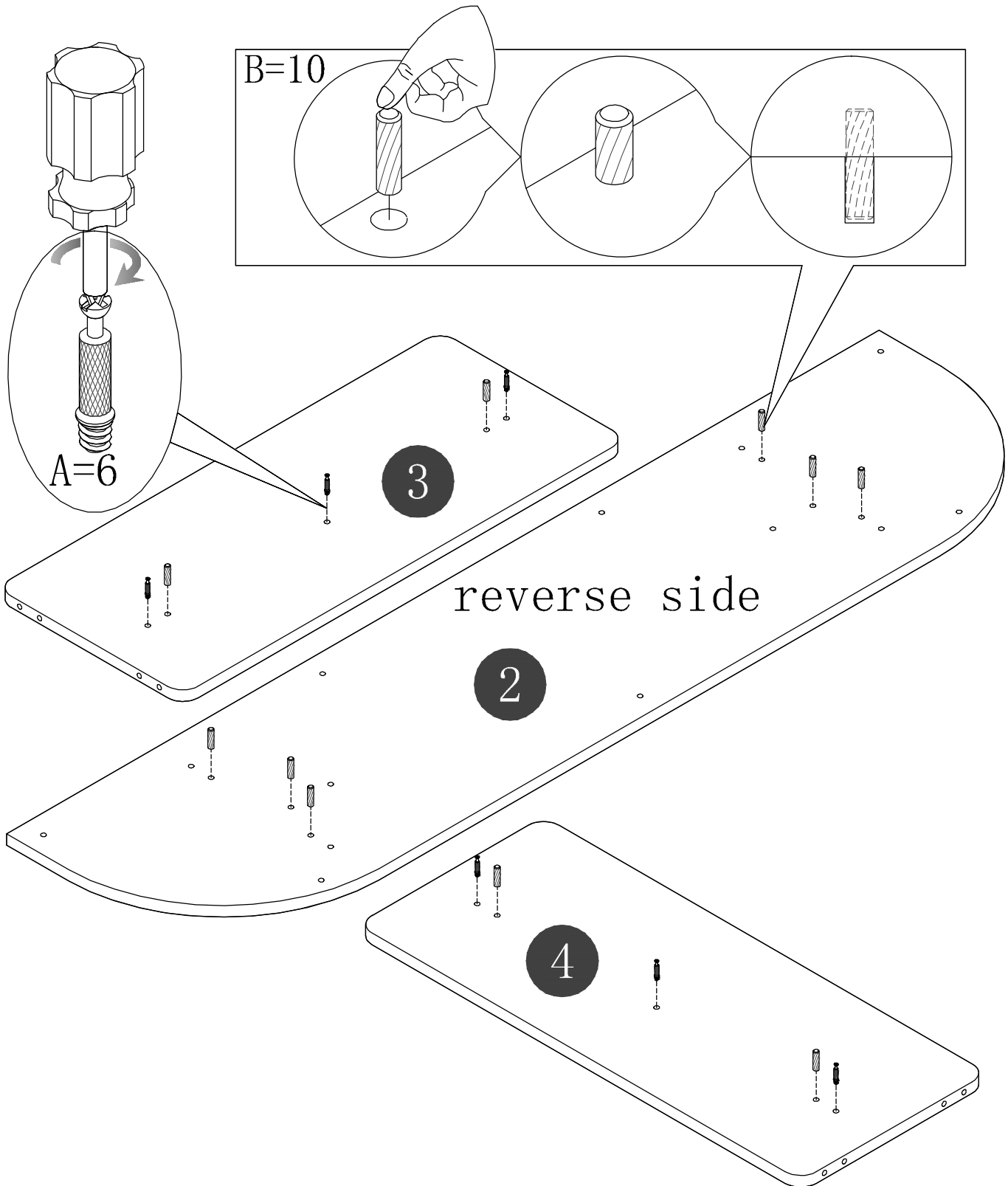
$\Phi 7*50$

Q=6

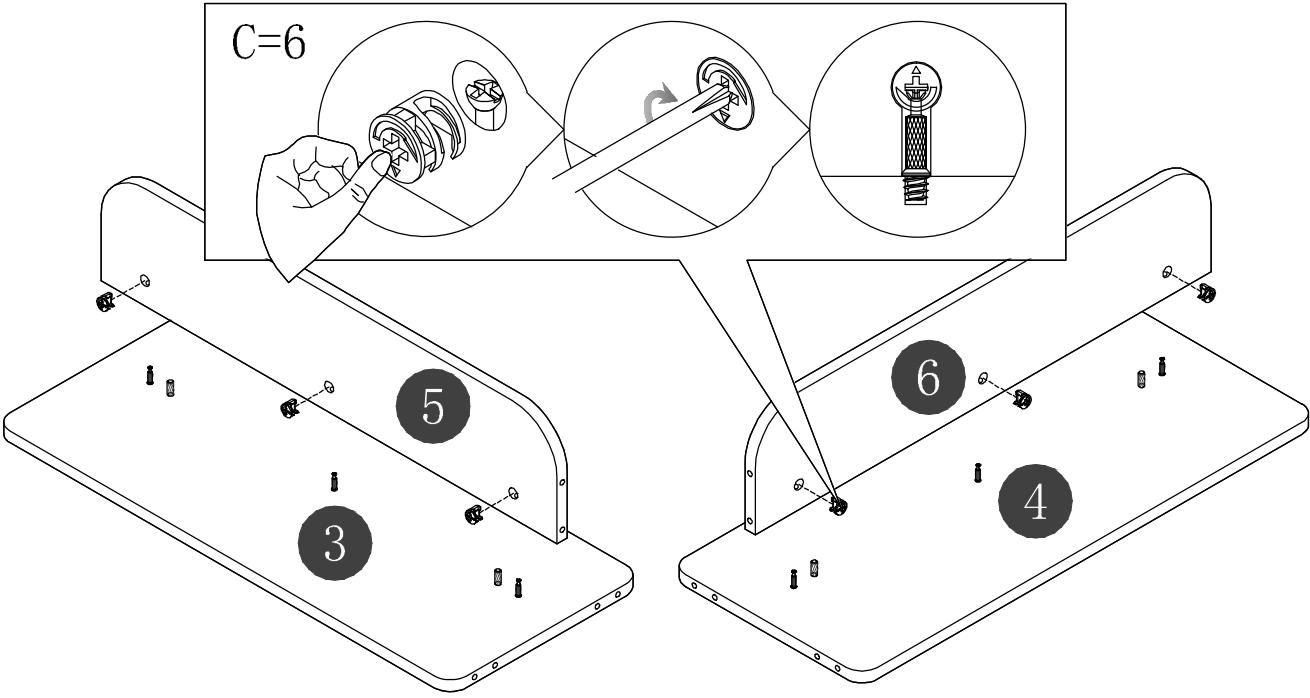


H=1

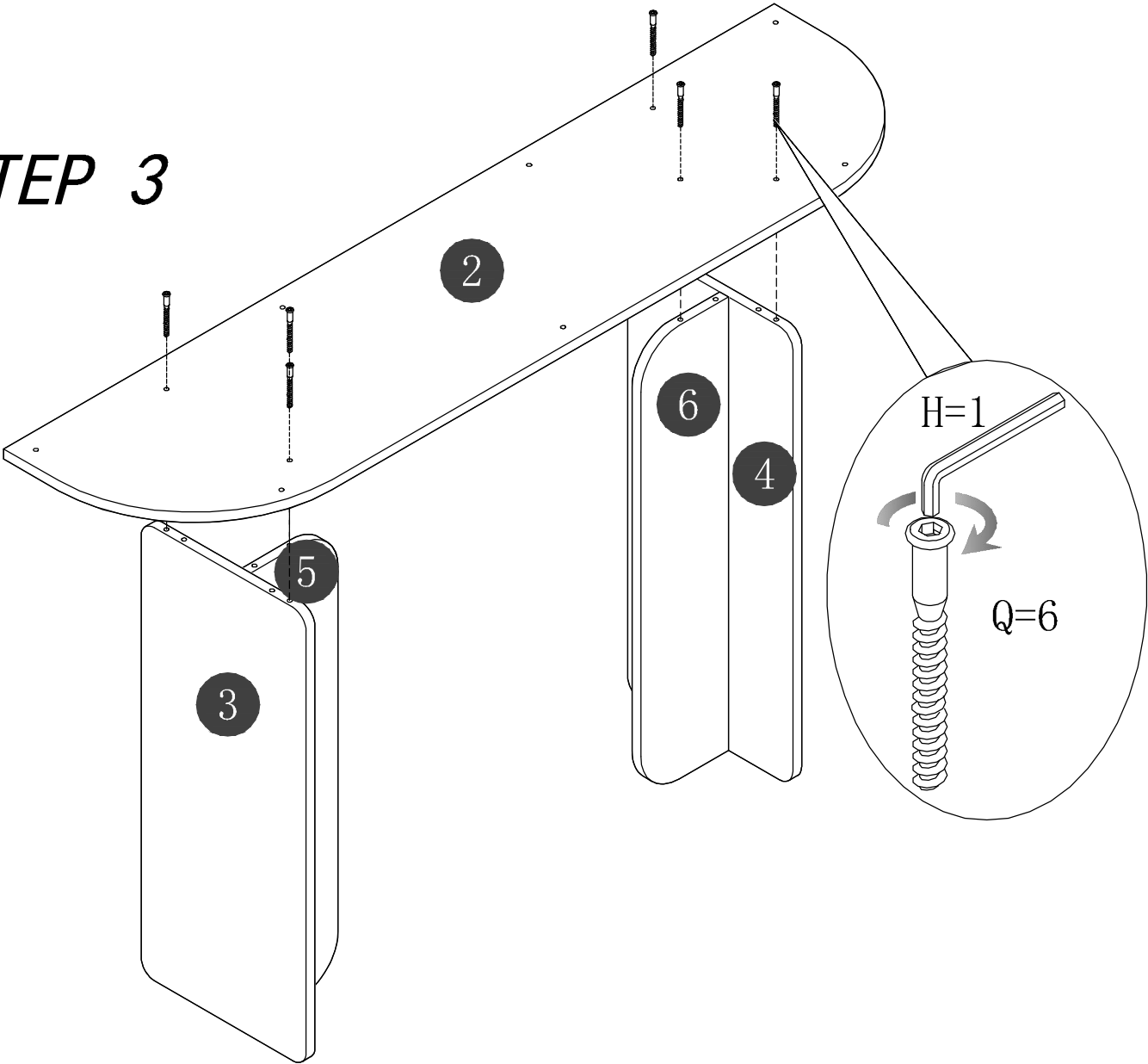
STEP 1



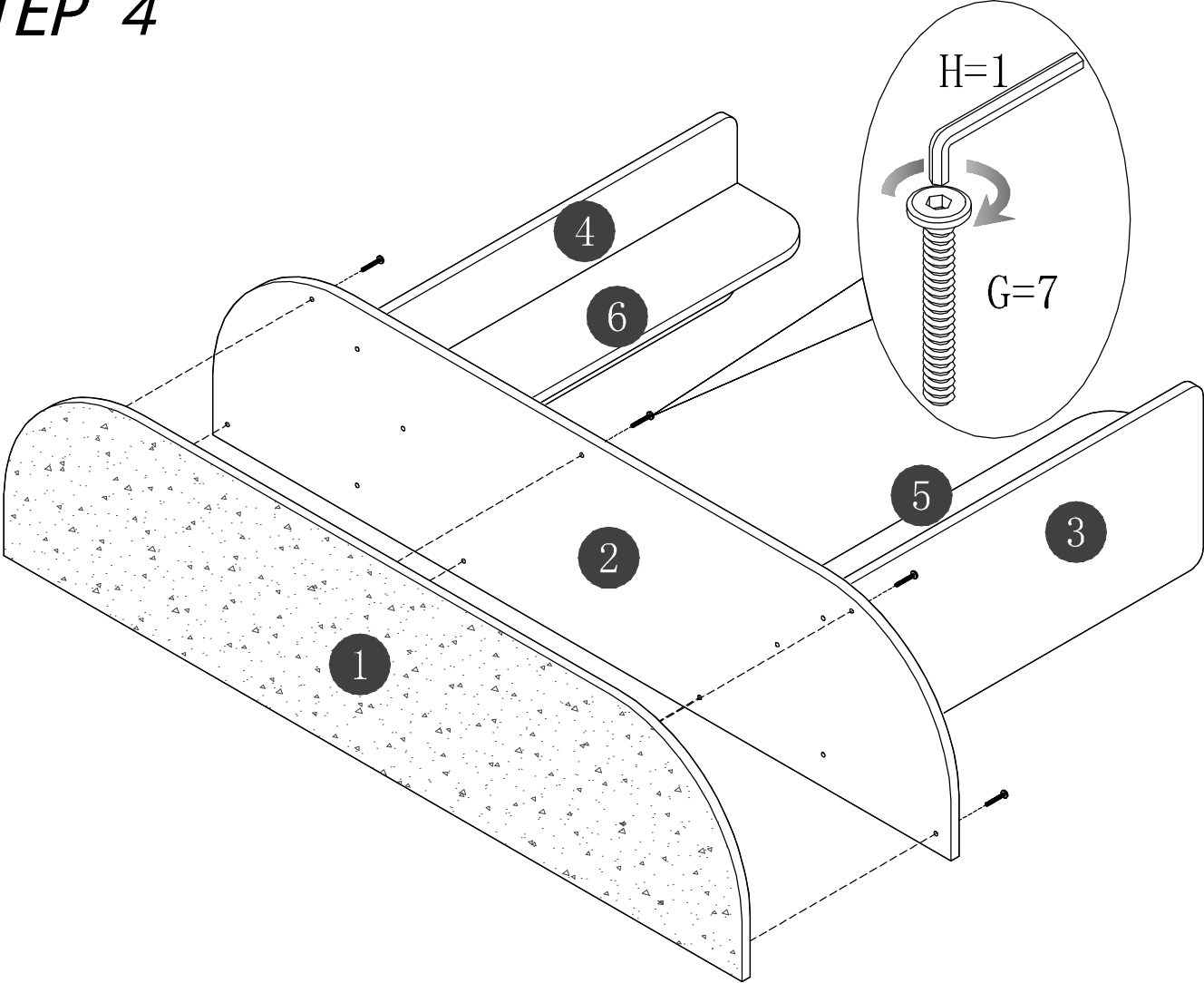
STEP 2



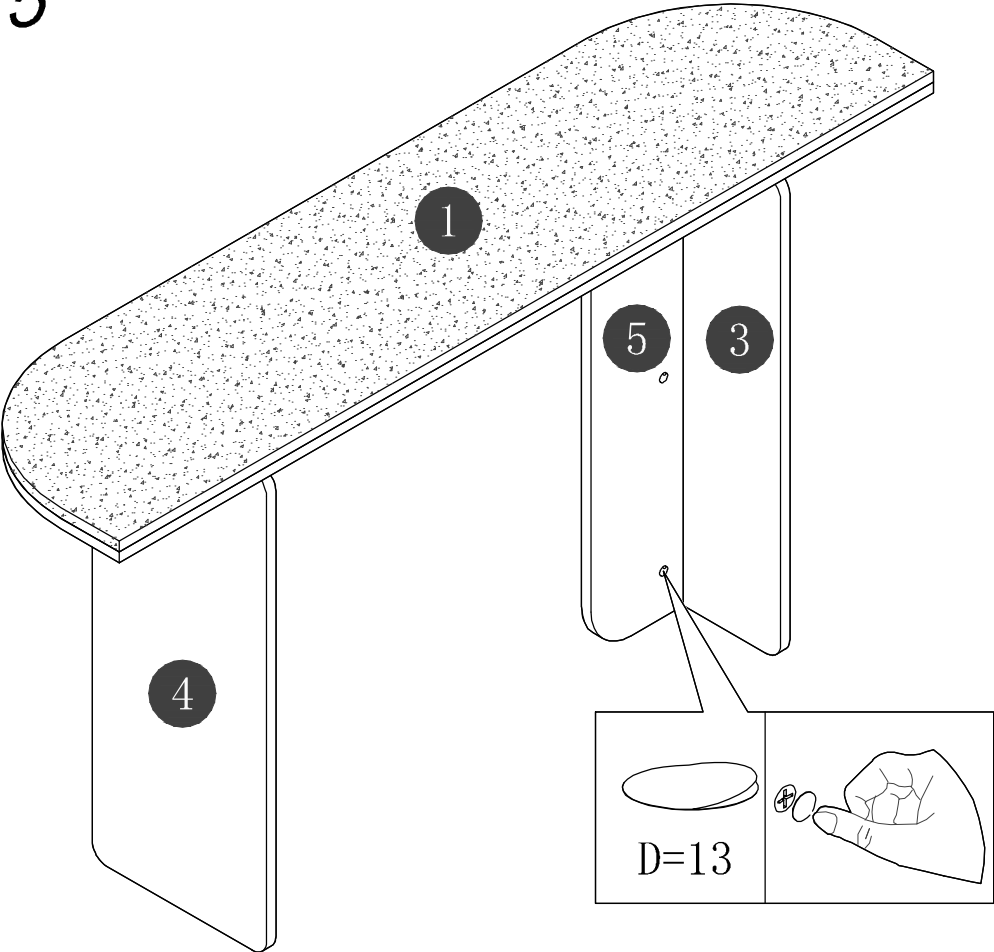
STEP 3



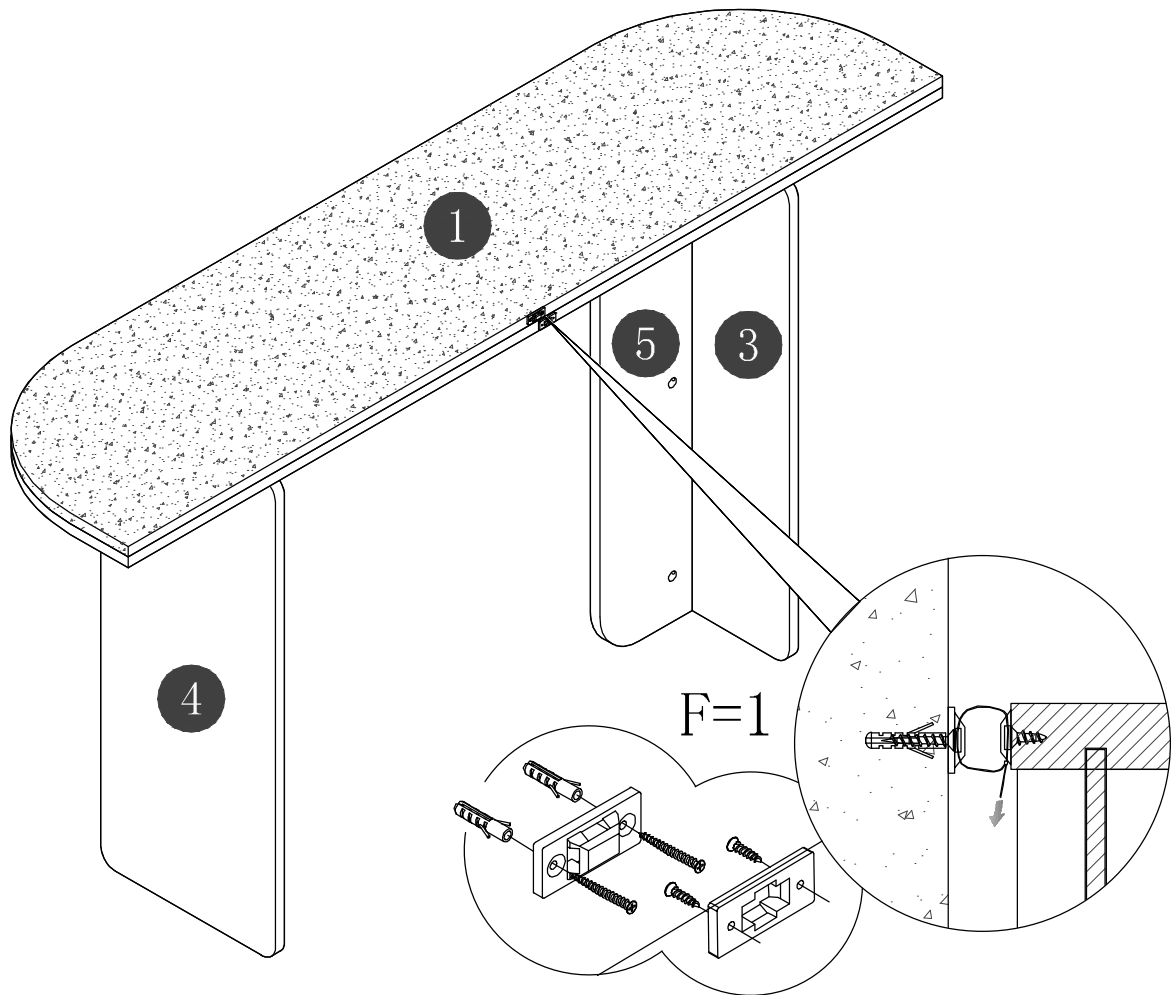
STEP 4



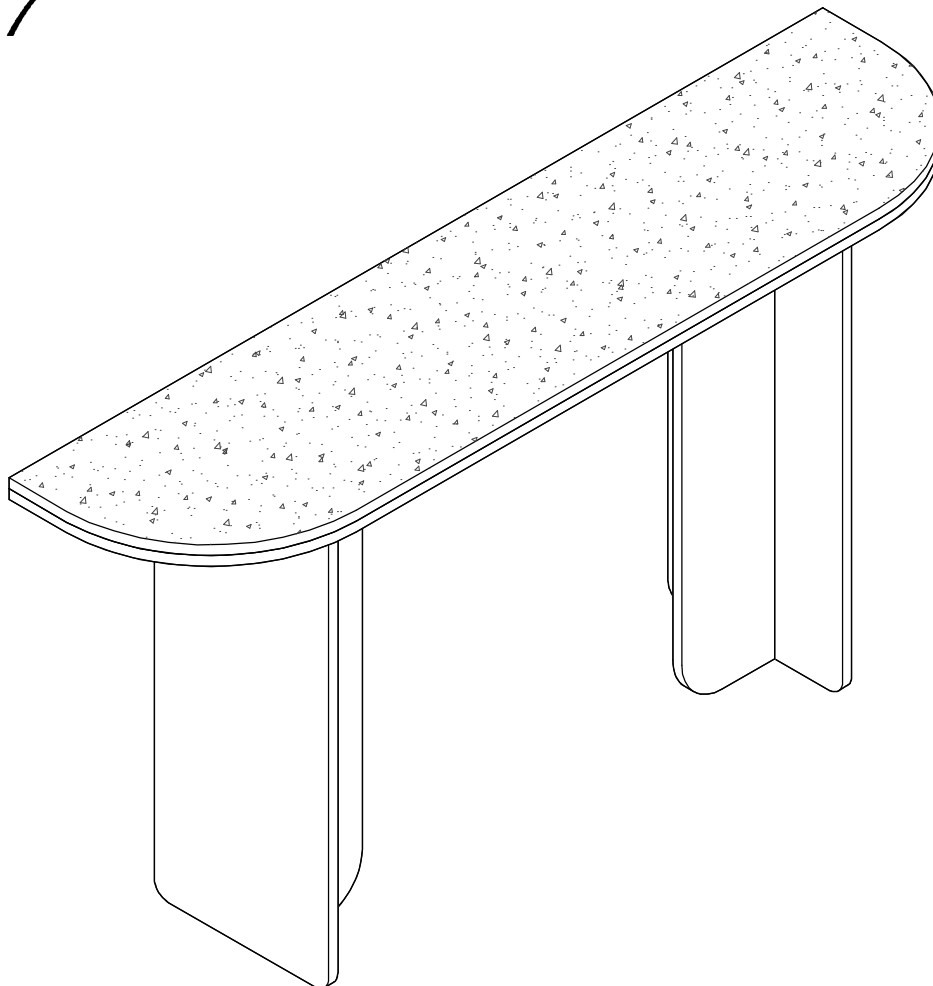
STEP 5



STEP 6

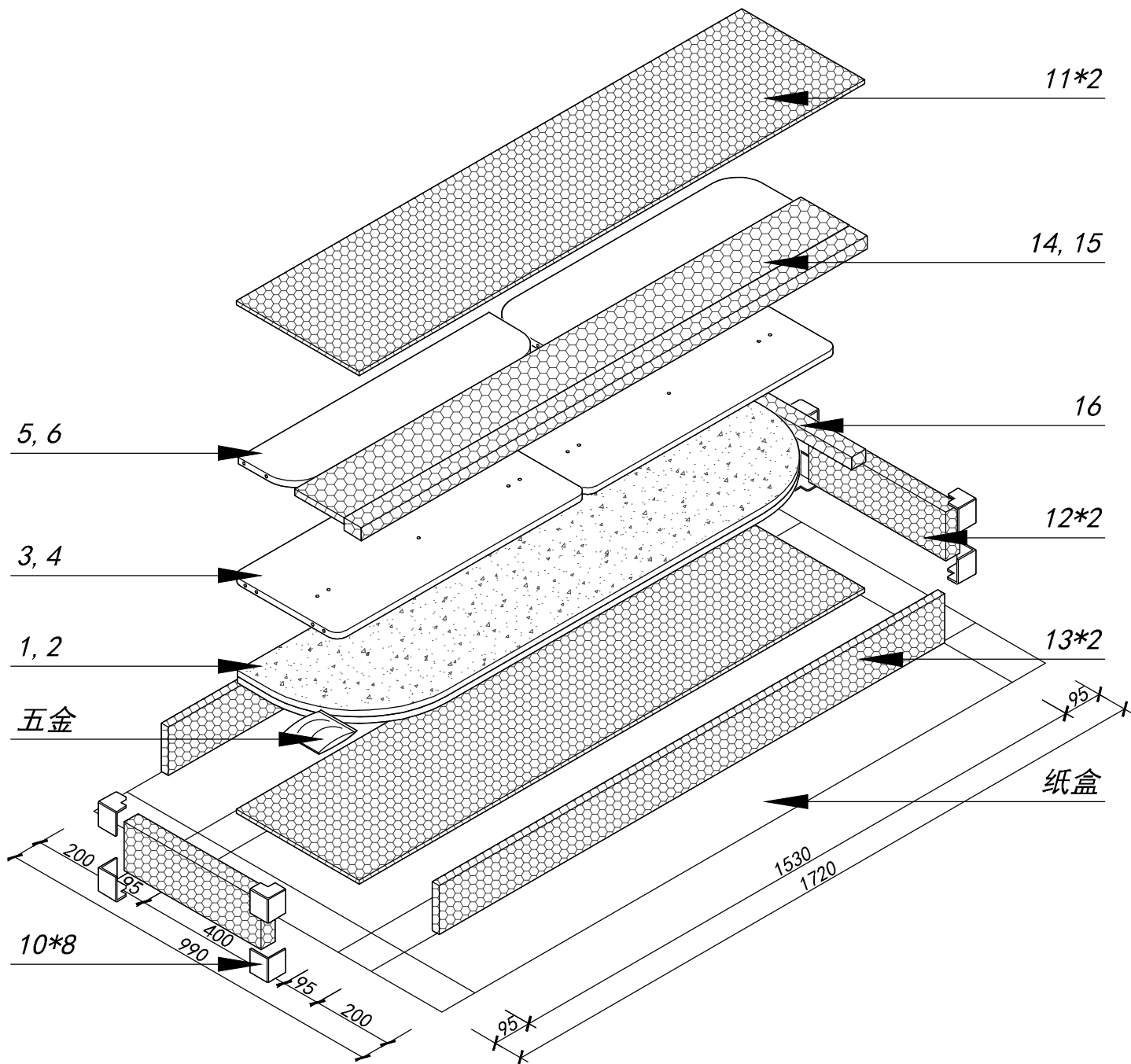


STEP 7



Finish

贝利萨玄关 140x35x75邮购包装



拆装邮购包装							
Panel No		Panel Sizes					Quantity
	柜体外径	1440	*	350	*	65	
	纸盒内径	1530	*	400	*	95	1
10	护角	50	*	50	*	50	8
11	泡沫	1440	*	350	*	10	2
12	泡沫	390	*	85	*	40	2
13	泡沫	1440	*	85	*	20	2
14	泡沫	1440	*	50	*	30	1
15	泡沫	1440	*	140	*	15	1
16	泡沫	300	*	40	*	30	1