



ASRI

YEAR END REPORT
FY 2016

HEALTH

In 2016,

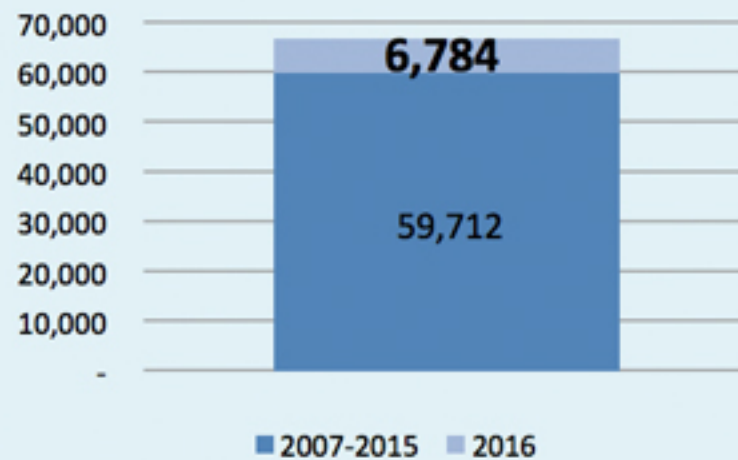
ASRI continued offering health services, finished construction of the hospital, started seeing patients with greater efficiency, and signed an MOU with BPJS.

Patients from green logging villages (no logging) receive a 70% discount on all healthcare services. Other colors* receive intermediate discounts.

*see chart below for color breakdown

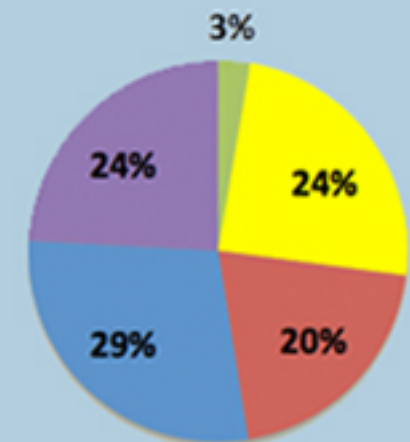
VISITS AND DIAGNOSES

Visits

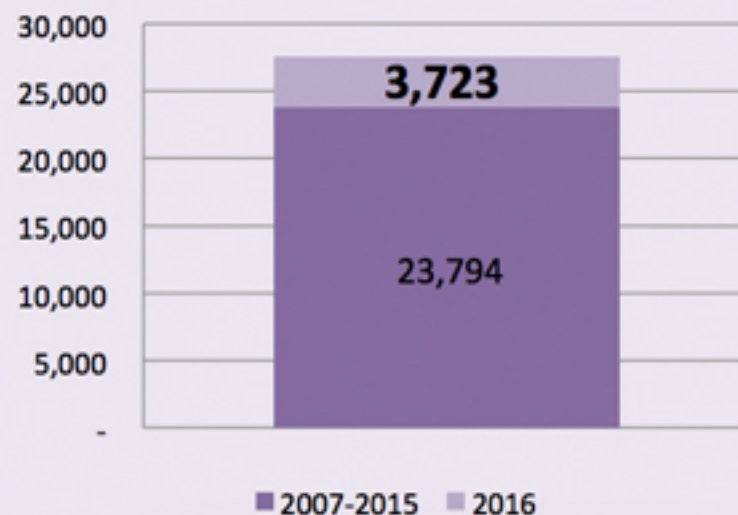


VISITS BY ECO-STATUS

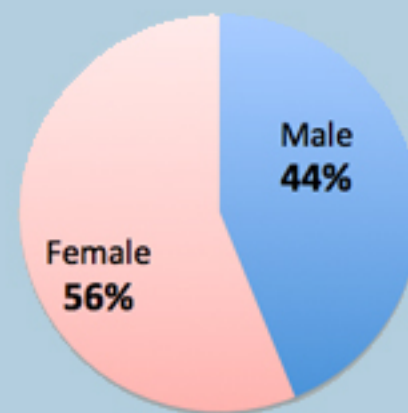
- outside ASRI's operational area
- not bordering national park, no logging
- forest protected, no logging
- more than 4 active logging points
- 1 - 3 active logging points



Individual Patients



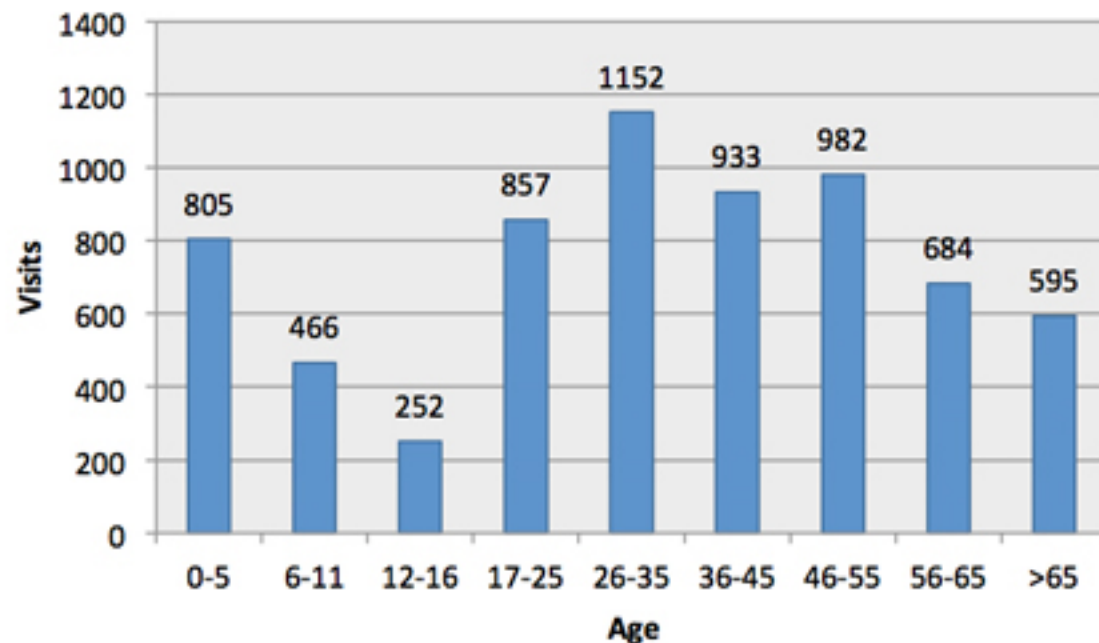
GENDER



VISITS AND DIAGNOSES



VISITS BY AGE

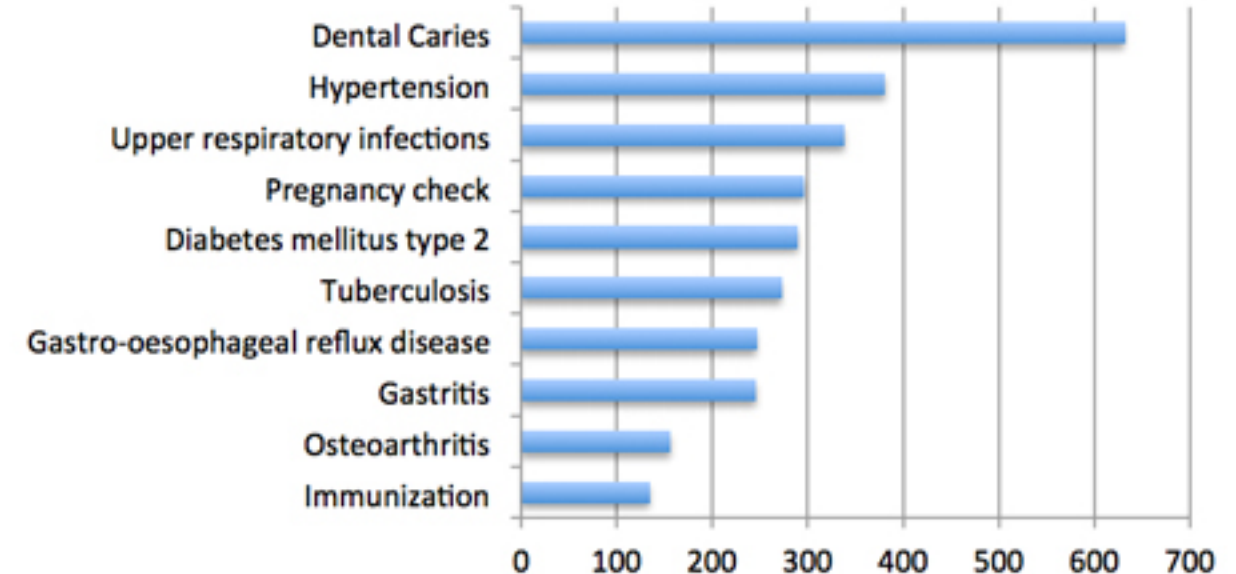


ASRI has a high patient retention rate and continues to serve new patients.

ASRI sees more women than men, resulting from seeing many pre-natal patients.

We are now in the process of hiring a midwife so that in 2017 we can expand our maternity services for deliveries at ASRI.

10 TOP DIAGNOSES



Tuberculosis remains common.

We frequently provide dental and prenatal care. The total number of dental patients has increased each year with patient awareness.

In 2016 we opened a new dental suite and expanded our dental services.

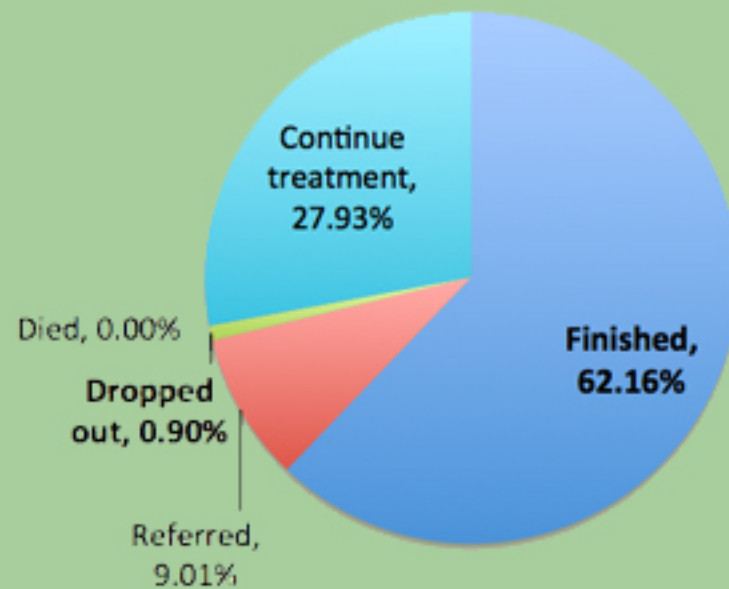
Additionally, 37 eyeglasses were distributed.



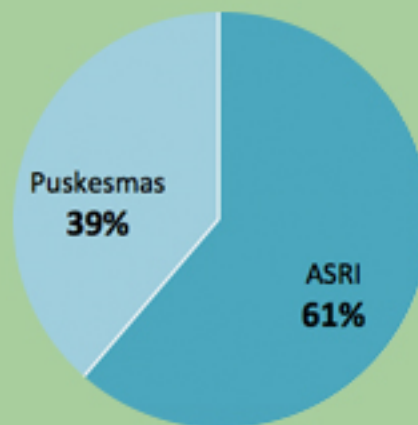
DOTS AND MOBILE CLINIC



2016 DOTS PATIENT TREATMENT



In addition to treating TB patients diagnosed at ASRI, we also treat TB patients referred by government clinics (Puskesmas).



DOTS PROGRAM

The mission of our DOTS program is to fight against the national epidemic of tuberculosis and drug-resistant tuberculosis. Indonesia is currently #2 in the world for TB prevalence. (WHO 2016)

In 2016, the number of patients who finished the program increased, and the drop out rate remained low (at only 0.90%). Of the 111 patients, 39% were initially diagnosed in government clinics.

MOBILE CLINIC

2 villages

12 trips

195 patient visits

107 individuals



HEALTH EDUCATION & PREVENTATIVE MEDICINE



TYPES OF IMMUNIZATIONS

HB 0	0
BCG	9
Polio 1	9
Polio 2	13
Polio 3	12
Polio 4	23
Measles	44
DPT/HB/Hib 1	16
DPT/HB/Hib 2	16
DPT/HB/Hib 3	23
TT	21
Polio+	12
Pentavalen (18-24 mos)	6
TOTAL	204

Many government immunization posts are now active, so ASRI primarily serves patients within our neighborhood.



BIRTH CONTROL

Condom	48
Pill	25
Depo shots (3 months)	35
Depo shots (1 month)	37
IUD	2

Birth control is an area for improvement in the ASRI clinic system – especially IUDs, which are viewed with suspicion by the community.

HEALTH EDUCATION

97 sessions

2,029 attendees

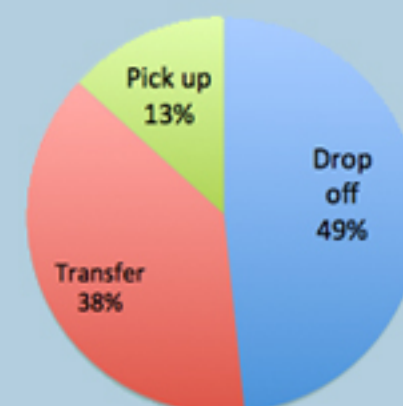
Topics on:

Diabetes mellitus, coronary artery disease, TBC, upper respiratory infection, smoking cessation, hypertension, birth control, immunization, breastfeeding, fever, diarrhea, dengue, hand washing, teeth brushing, STDs, narcotics, eye care, ENT care.

Health Education will expand through outreach in the new hospital waiting room and new local radio.

We will also continue outreach with: the mobile clinic, presentations in high schools, community meetings, the ASRI kids program, and forest guardian meetings.

AMBULANCE



CHTC

COMMUNITY HOSPITAL & TRAINING CENTER



The overall CHTC construction is 100%, complete



The main building (Building A) and the laboratory (in Building B) have been used to run the clinic



Walkways in front of CHTC and in the courtyard of the main building (Building A) are complete



Installation of art, decor, and educational visuals in progress



Lighting fixture installation in progress.



Front yard landscaping work in progress

GOALS FOR **2017**:

1. Complete final inspection of CHTC.
2. Complete construction of main road for CHTC.
3. Complete landscaping work on CHTC grounds.



VOLUNTEERS



34 Volunteers in 2016

- 2 hospital management specialists
- 3 attending physicians
- 8 residents
- 3 medical students
- 2 pharmacists
- 7 conservation assistants
- 3 technicians
- 2 architects
- 1 paramedic
- 3 surveyors



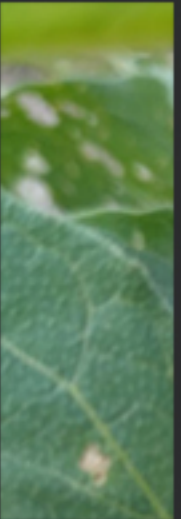
In 2016, Volunteers at ASRI assisted in mentoring and educating ASRI doctors and medical staff, sharing knowledge and training on hospital management, planting trees and assisting our reforestation efforts, and helping to design and finalize the construction of the CHTC building.



Volunteers came from the United States, Indonesia, Poland, and Korea

CONSERVATION

GENERAL CONSERVATION



Planted 4 hectares at
Laman Satong
Reforestation Site



Launched program to
reforest 17 hectares
of illegal gardens in TNGP



Established organic
garden and training
center behind hospital



Hired GIS technician to
better plan and measure
program impacts



Prepared for
5-year survey
to be conducted in early 2017



Sign MOU with
Pampang Harapan
(last village to sign,
of 22 around park)



GOALS ACHIEVED:

1. Planted 4 hectares with native trees at the Laman Satong reforestation site
2. Negotiated an agreement between TNGP and farmers of 31 of illegal gardens in Rantau Panjang, where farmers agree not to clear more forest and to plant native trees in the gardens, in exchange for the park recognizing the gardens as legal
3. Established an organic garden behind hospital to provide produce for ASRI meals and to serve as a training center for communities, students, and government officials
4. Hired GIS technician and collaborated with national park to resolve boundary disputes, map vegetation, and measure ASRI reforestation progress
5. Arranged logistics and prepared methods for ASRI's 5-year survey in 2017



GOALS MISSED:

1. The Village Head of Pampang Harapan continues to stall discussion of signing an MOU. We are currently in negotiations

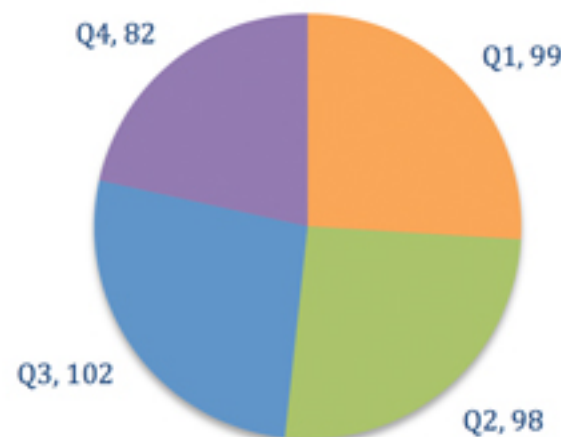
FOREST GUARDIANS



- **NEW FOR 2016:** Forest Guardians received training in how to report wildlife sightings and illegal logging activities to the national park.
- **73%** of Forest Guardians actively joined ASRI's other conservation activities in their villages.

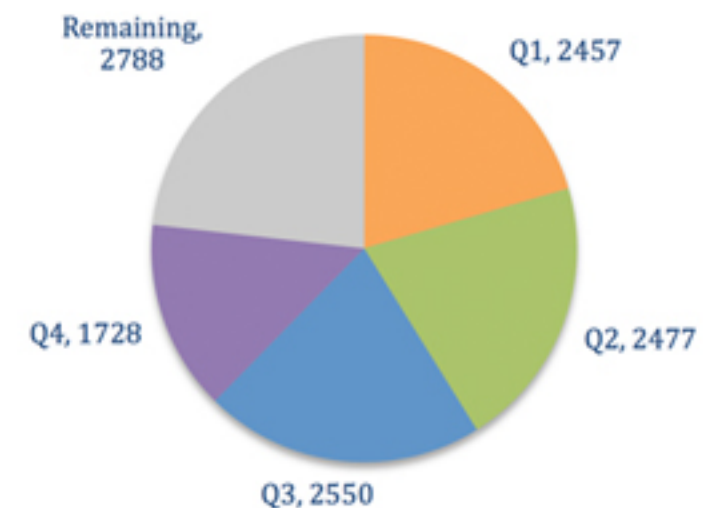
LOGGER INTERVENTION

Goal of 180
one-on-one
meetings
with illegal loggers to
persuade them
to stop :
Target exceeded by
112%



CONSERVATION OUTREACH

Goal of 12,000
one-on-one meetings
with
Forest Guardians:
77%
of target reached



CONSERVATION EDUCATION OUTREACH



CONSERVATION EDUCATION IN CLINIC

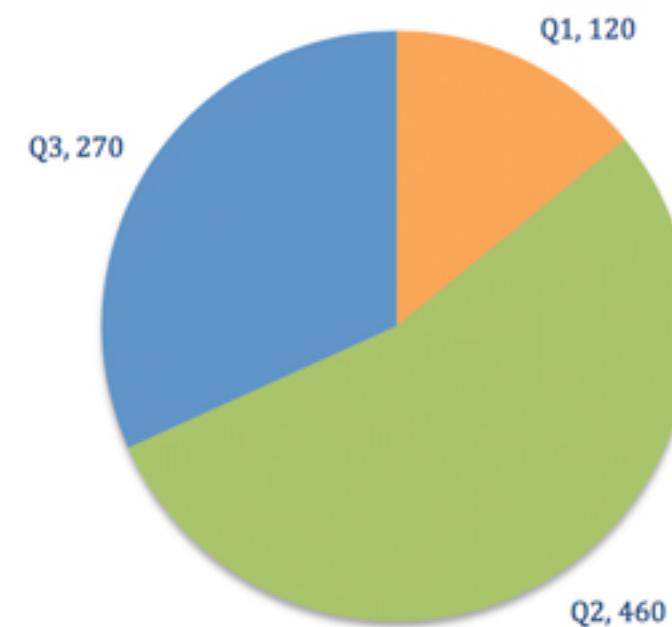
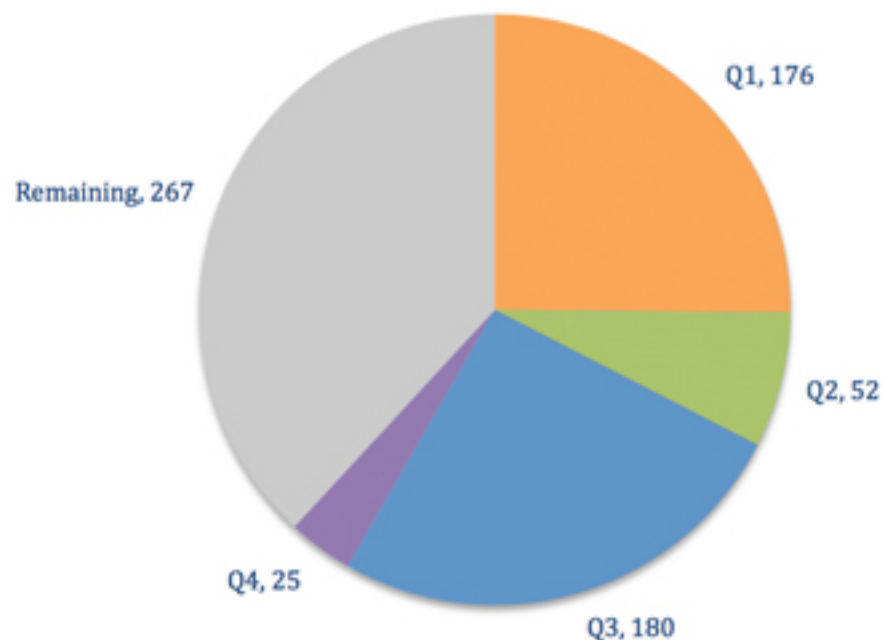
CONSERVATION EDUCATION IN COMMUNITIES

Goal of reaching 700 patients in clinic:

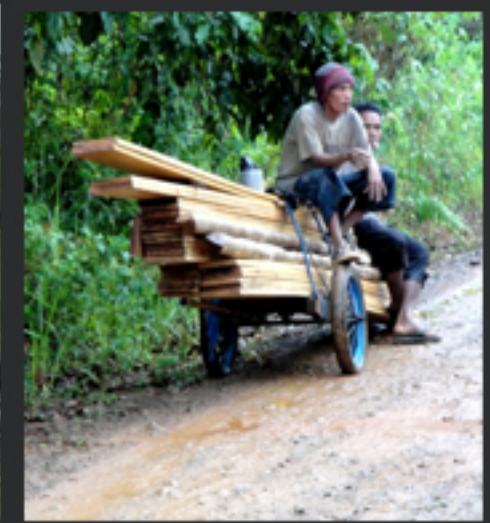
Goal of reaching 500 people during community outreach:

62% of target reached

Target exceeded by 70%



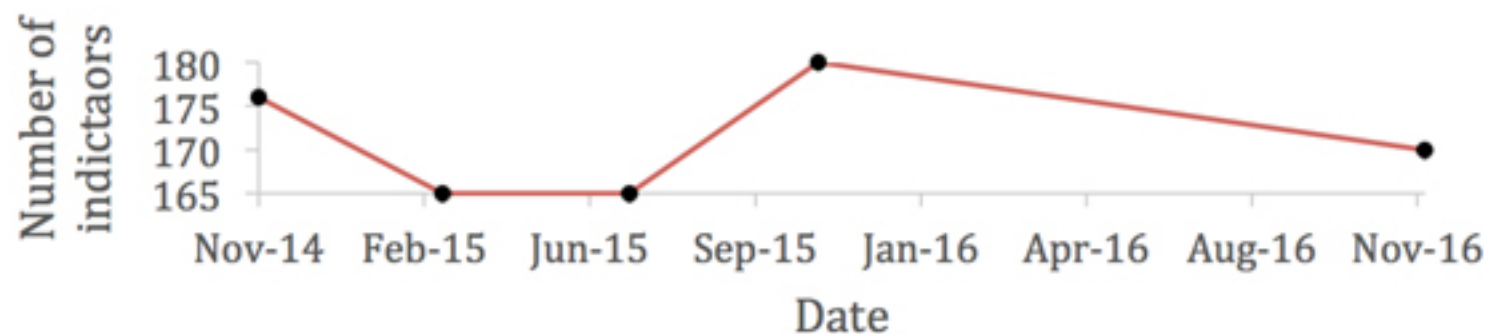
ILLEGAL LOGGING MONITORING



SUBVILLAGE ILLEGAL LOGGING STATUS



LOGGING INDICATORS



COLOR	#	%
RED	13	17%
YELLOW	15	20%
GREEN	7	9%
BLUE	40	53%

ASRI KIDS



- **NEW FOR 2016:** Launched ASRI Teens program for graduates of ASRI Kids, with biweekly conservation education activities or field trips
- We began using the hospital's organic garden and training center as a location for ASRI Kids and ASRI Teens activities

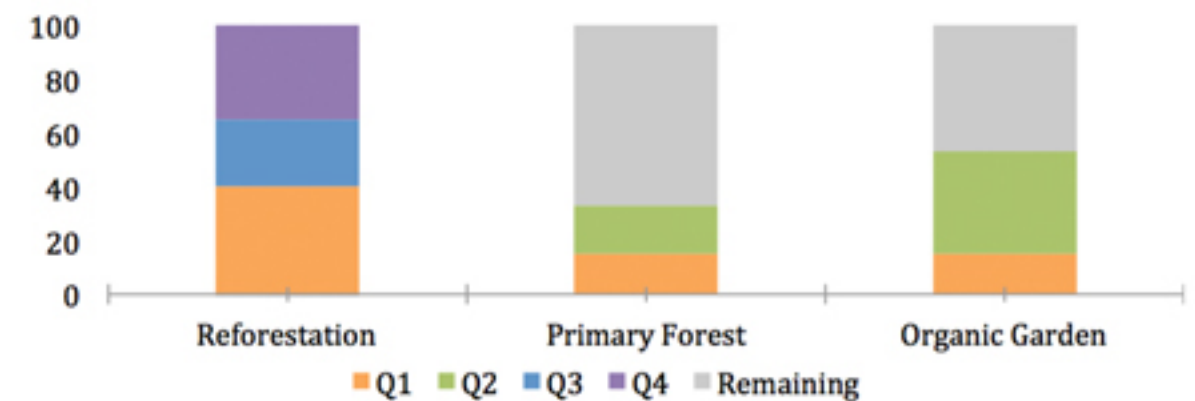
KIDS IN 11 WEEK COURSE

Goal of 180 students
ASRI Kids course

Target reached



ASRI KIDS FIELD TRIPS



Goal of 100 kids to each of 3 sites. Reforestation: Target exceeded by 2%. Primary forest: 33% of target reached. Organic garden: 53% of target reached.

SUSTAINABLE AGRICULTURE



Negotiated collaboration between farmers groups and Department of Agriculture



Provided intensive sustainable agriculture training to farmers in Pampang Harapan



Set up example organic garden and training center at ASRI hospital.



Two conservation employees attended sustainable agriculture training in Yogyakarta



Provided organic gardening and financial management training for 17 housewives in Tanjung Gunung



Trained 50 farmers in Pangkalan Jihing to use organic herbicides instead of fire to clear fields

FARMERS GROUPS BY NUMBERS:

- 126 active farmers group members
- 17 housewives participate in organic kitchen garden program
- Harapan Baru farmers group sells up to 4,000 kg of organic fertilizer per month for 33% of the cost of synthetic fertilizers
- Since 2012, ASRI has helped farmers groups obtain 6 government grants to buy machinery, 30 goats, and 30 cows

LESSONS LEARNED IN 2016:

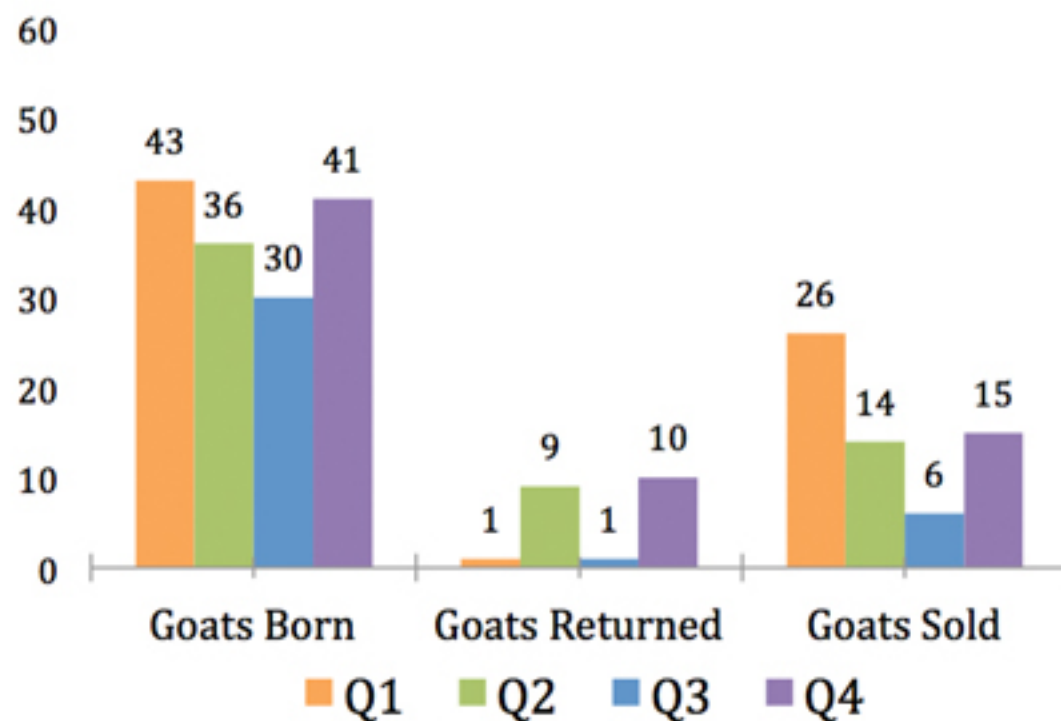
- 9 of 16 farmers groups are successful enough to be independent from ASRI. In the future we will shift efforts away from established groups to focus on groups that are just starting.
- With our new example organic garden and training center, we can provide sustainable agriculture training more cheaply by inviting farmers to come to us.
- We can also provide produce for ASRI meals, and sell a portion of our crops to pay for maintenance costs.

GOATS FOR WIDOWS



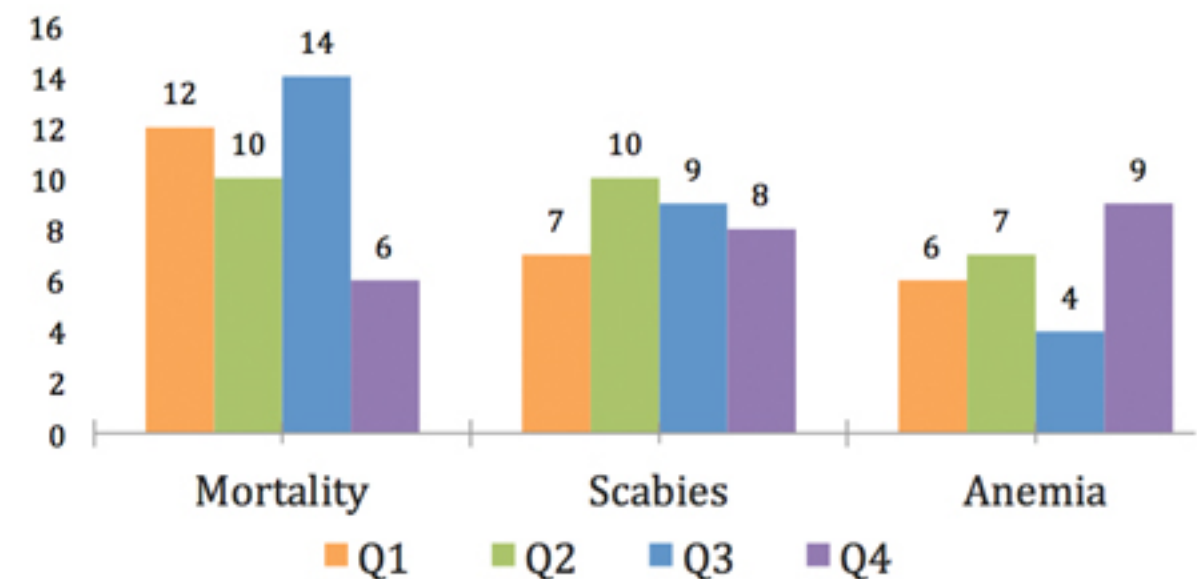
GOATS FOR WIDOWS 2016

- 122 goat households were checked monthly.
- 28% all participating widows sold goats to pay for health care, home repairs, school fees, or other daily economic needs.



GOAT DISEASE AND MORTALITY

- 18 new households were added to the program.
- 16% of widows paid ASRI back with goat kids to redistribute to widows still waiting to receive goats.



REFORESTATION



Reforested 4 ha of the Laman Satong site



Launched program to partially reforest 31 illegal gardens in Rantau Panjang



Mapped reforestation sites, park vegetation changes and boundary disputes



Protected sites from wildfires with fire breaks and patrols



Get national park to ratify Rantau Panjang planting agreement



Conduct seedling collecting expedition with national park staff



GOALS ACHIEVED:

1. Planted 4 hectares of Laman Satong site with native seedlings
2. Organized agreement between farmers in Rantau Panjang and national park to partially reforest 31 illegal gardens totalling 17 hectares
3. Our new GIS technician mapped our field sites, park vegetation changes since 1989, boundary disputes between the park and local landowners
4. No wildfires occurred in our reforestation sites



GOALS SHIFTED:

1. The park has not yet signed the agreement to partially reforest illegal gardens in Rantau Panjang, but will do so in early 2017
2. A planned expedition with park staff to collect native seedlings at Cabang Panti was delayed by floods, and will be conducted in early 2017

FAMILY ENTREPRENEURSHIP



Launched kitchen garden program with 17 housewives in Tanjung Gunung



Held regular meetings with housewives to provide training in organic gardening, financial management, and family health



Launched chainsaw buyback entrepreneurship program



Conducted baseline survey and regular meetings with 5 illegal loggers and their wives in Tambak Rawang



Developed joint business model where loggers give up chainsaws as start-up capital, and ASRI provides balance of investment funds



Investment funds will be distributed in early 2017



GOALS ACHIEVED:

1. We helped 17 housewives improve family nutrition and financial stability using organic farming methods, and will expand the program in 2017
2. We prepared the first round of our chainsaw buyback entrepreneurship program, in which we help loggers and their wives start up alternative businesses and stop logging



GOALS SHIFTED:

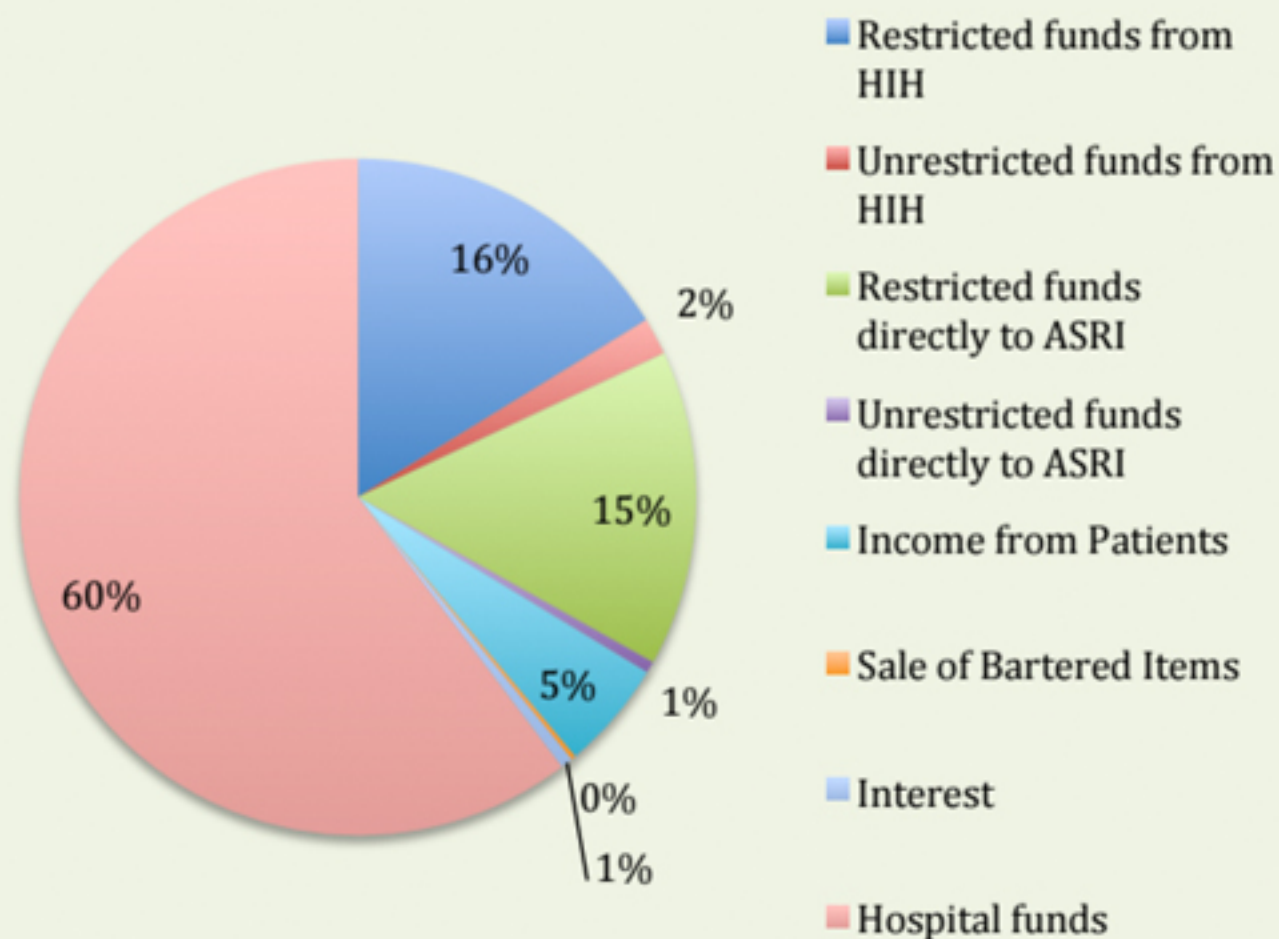
1. The first investment funds for our chainsaw buyback program will be distributed in early 2017, and we should start earning our investments back in mid to late 2017

FINANCES

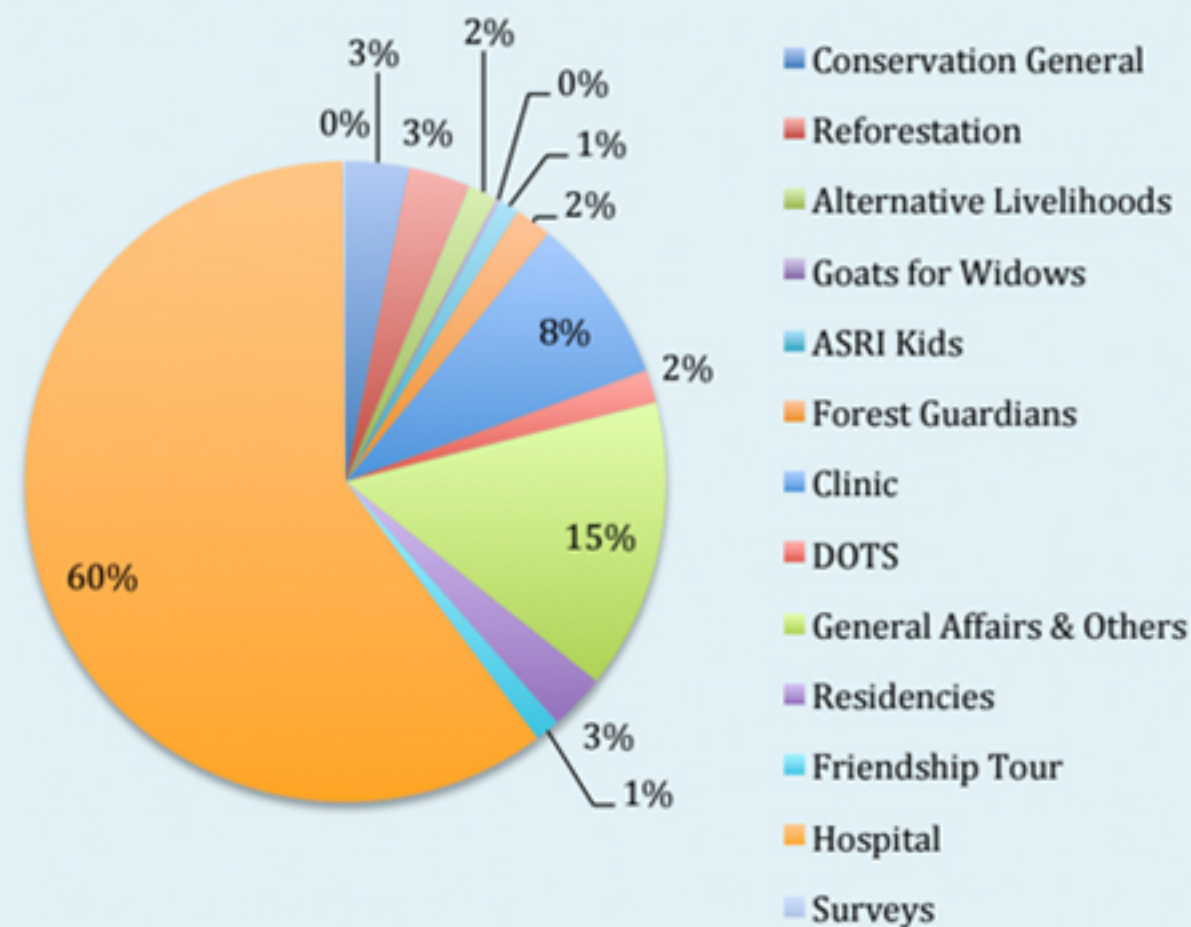
INCOME AND EXPENSES

INCOME	\$ 983,845
EXPENSES	\$ 1,170,250
DEFICIT	(\$ 186,405)

INCOME

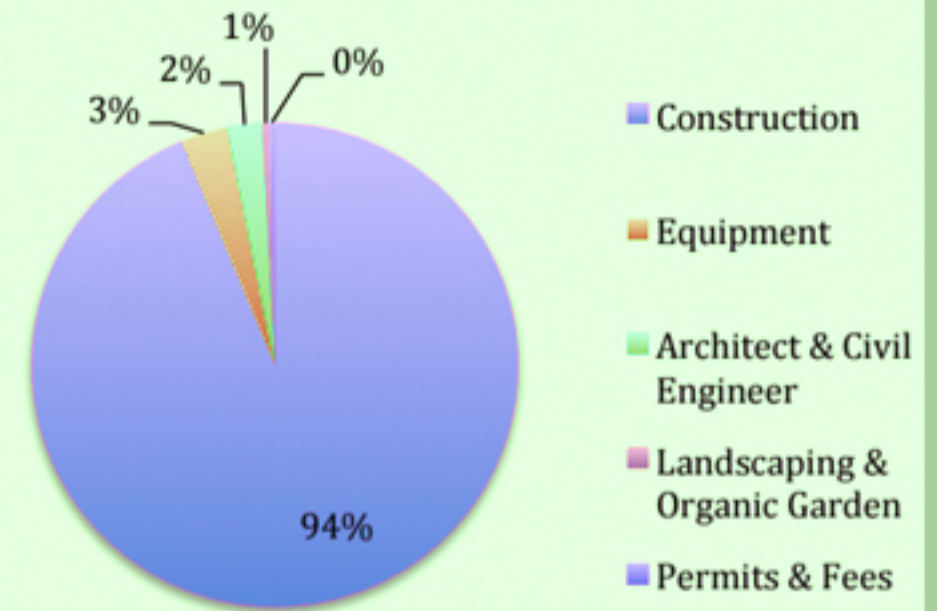


EXPENSES



INCOME AND EXPENSES

HOSPITAL RELATED EXPENSES



BUDGET VS ACTUAL EXPENSES

