



**ASRI**  
ALAM SEHAT LESTARI

# Healing People Healing the Planet

*an Impact Report*  
**2007 – 2025**





**ASRI**  
ALAM SEHAT LESTARI

# Table of Contents

---

<b>1</b>	Table of Contents
<b>3</b>	ASRI Vision and Mission
<b>4</b>	Board Chairman's Message
<b>5</b>	Executive Summary
<b>8</b>	Impact on Forest
<b>12</b>	Work Approach
<b>14</b>	Work Areas
<b>16</b>	Programs
<b>34</b>	Replicating the ASRI Model in Other Regions
<b>36</b>	Future Plans
<b>37</b>	Acknowledgements and Appreciation
<b>39</b>	Partners and Collaborators
<b>41</b>	Financial Summary
<b>44</b>	Closing



# Visi & Misi ASRI



## Vision

---

*Healthy, prosperous communities  
and sustainable nature*



## Mission

---

*Working together to build healthy and  
prosperous communities and a sustainable  
environment in regions of Indonesia that  
are of great value to the health of the earth,  
and to inspire the world.*

# Board Chairman's Message



## Foreword by the Chairman of the Foundation

With deep gratitude, I express my sincere appreciation for the publication of the ASRI 2025 Impact Booklet. This documentation is not merely a summary of achievements or a series of figures, but a reflection of our long journey in protecting people and caring for nature for almost two decades. Every page reflects the collective work of thousands of hands and hearts: village communities, health workers, farmers, mothers, young people, Forest Guardian, ASRI Kids/Teens, volunteers, government partners, academics, and donors who believe that people and forests must survive together.

From the outset, ASRI was founded on a simple yet fundamental belief: human health cannot be separated from planetary health. The Planetary Health approach and Radical Listening method serve as a compass that continues to guide our steps, enabling us to listen to communities before determining solutions, ensuring that every step is rooted in their needs and aspirations.

These solutions were then realized through inclusive health services, the restoration of more than 400 hectares of forest, the transition of hundreds of former loggers to more sustainable livelihoods, the empowerment of women through goat farming programs, and environmental education that reached tens of thousands of children and adults. Every change is the result of collective courage.

The impact described in this booklet is the result of collaboration between all parties. None of these successes were achieved by ASRI alone. They are all the fruit of relationships built on trust with local communities and cross-sector partners who stand with us.

On behalf of the entire foundation, I would like to express my deepest gratitude to our partners, local and national governments, donor agencies, academics, all ASRI staff, and especially our forest guardian communities. May this booklet serve as a reminder that change requires patience, long-term commitment, and sincere collaboration.

Sincerely,

Yani Saloh  
Chairperson of ASRI Foundation

# Executive Summary

Since 2007, ASRI has been committed to restoring the relationship between humans and nature. By the end of 2025, ASRI, together with local communities and the National Park Office, will have planted more than 700,000 tree seedlings, restoring over 435 hectares of degraded forest. A quarter of the seedlings planted were collected by the community in exchange for healthcare services at ASRI clinics.

## ASRI's flagship programs include:



Providing healthcare services to communities living near forests



Offering the option to pay for healthcare services using tree seedlings



Reforestation of degraded forests



A chainsaw buyback program to help loggers transition to new livelihoods



Providing goats as a source of income for widows



Environmental education programs for children and teenagers



Training in sustainable agriculture

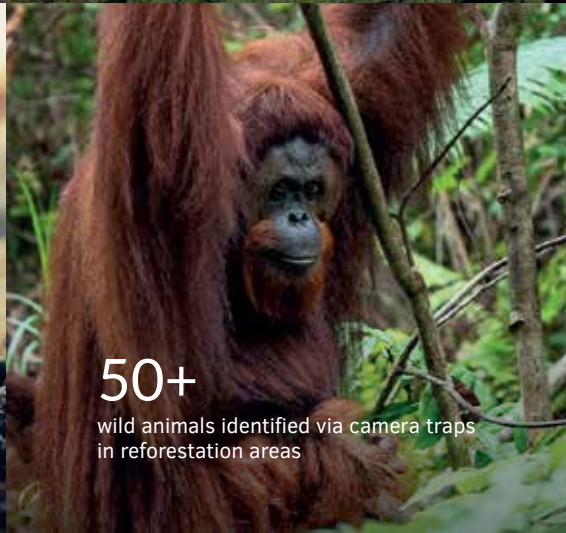
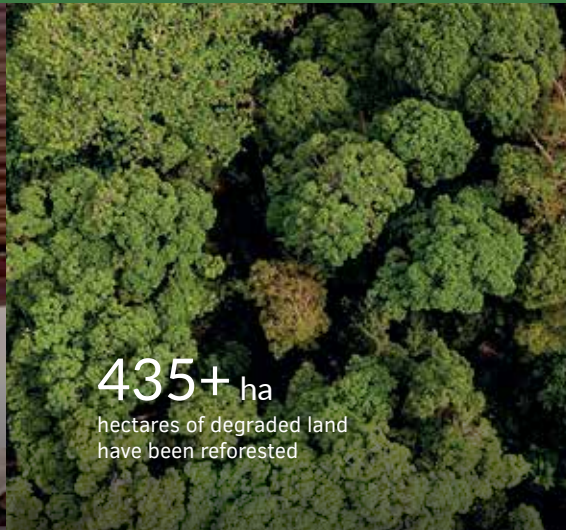
This booklet has been compiled as a form of accountability to donors, partners, and the public who support the vision that human health and planetary health are interconnected. Transparency is our commitment to clearly demonstrate how funds and support are utilized.

Moving forward, ASRI is committed to expanding its programs to other regions in Indonesia, including collaborating with the Ministry of Health to provide health services for indigenous and remote communities, working with the Ministry of Forestry to increase reforestation areas, improving conservation monitoring technology, and strengthening planetary health education for communities living near forests and the general public.



Highlighted Facts

# Our Result So Far!





340+

loggers have surrendered their chainsaws and switched livelihoods



150,000+

Estimated number of trees preserved through the Chainsaw Buyback program



13,000+

people received education on Planetary Health



182,000+

Tree seedlings collected from patients



1000+

Number of residents receiving livelihood assistance (goats for widows, eco-polybags, agricultural training, chainsaw buyback)



172,000+

Number of eco-polybags purchased from the community

# Impact on forests

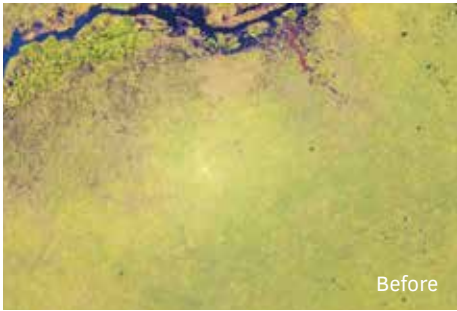
Since 2009, Gunung Palung National Park Authority, together with Alam Sehat Lestari Foundation (ASRI) and local communities, have collaborated to restore several degraded areas within Gunung Palung National Park. The following images illustrate some of the changes that have taken place in the reforested areas:

## Impact on Forest

*Reforestation Impact at Laman Satong, Ketapang Regency, 2006–2025*



### Impact of Reforestation in Sedahan Jaya (Perupuk), North Kayong Regency



### Impact of the Garden to Forest Rehabilitation Program in Gunung Sembilan, North Kayong Regency



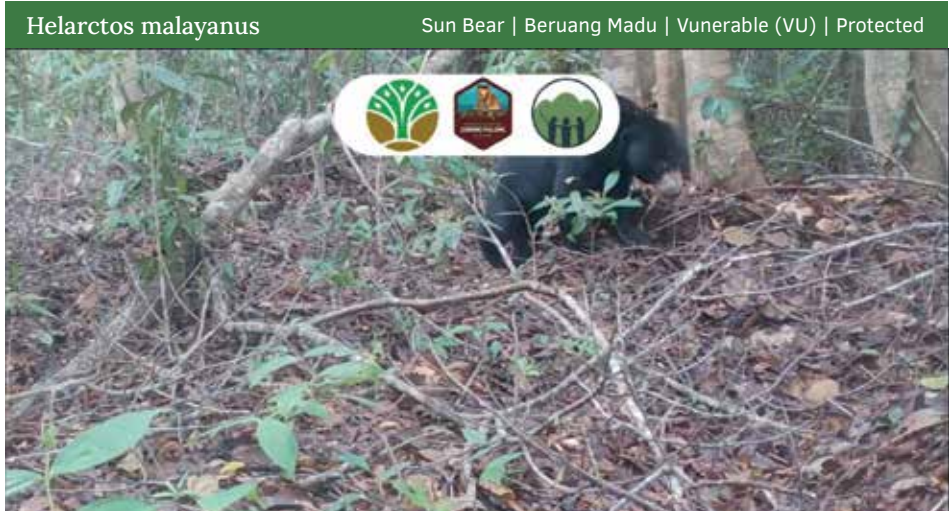
### Impact of Reforestation in Sedahan Jaya (Wildlife Corridor), North Kayong Regency



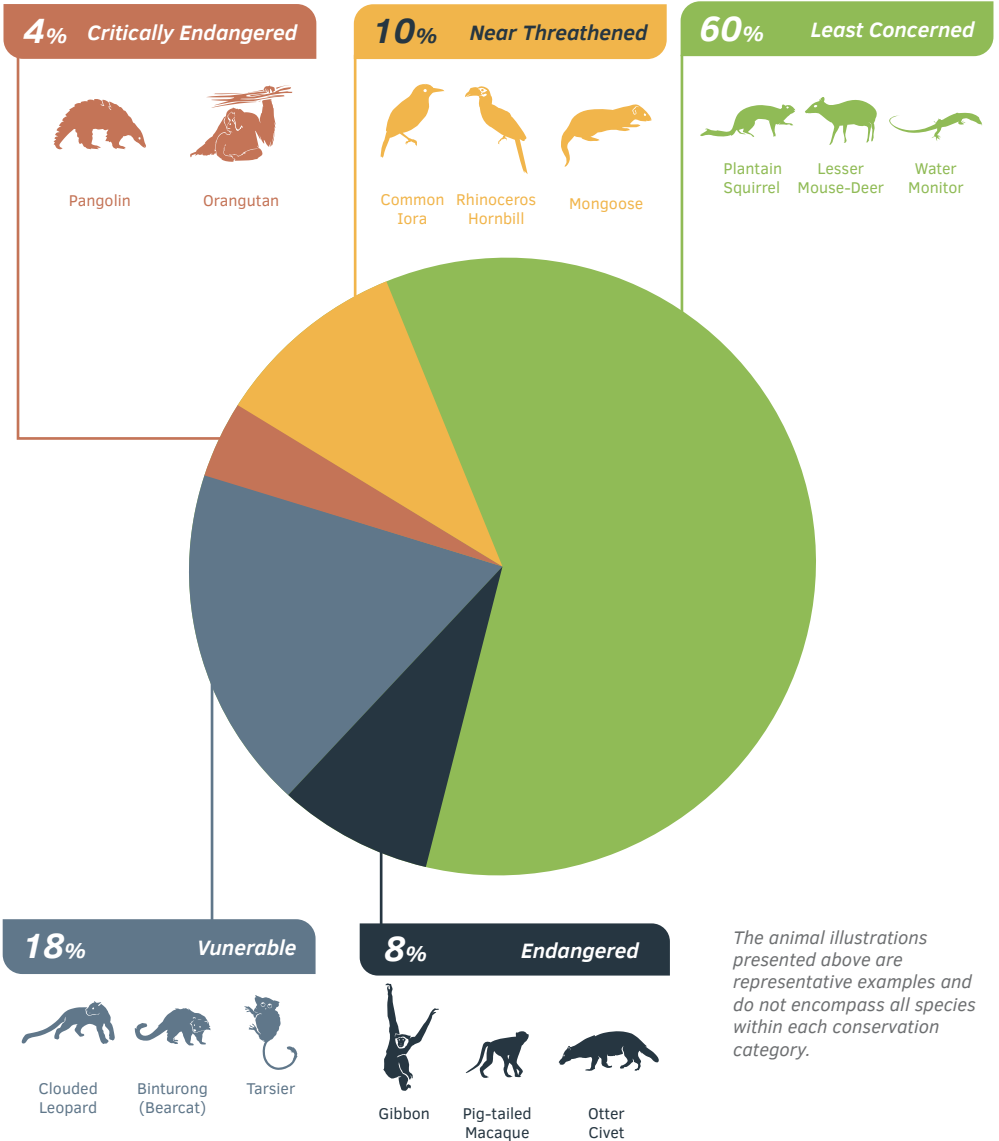
## Returned Wildlife

### *Camera trap pictures + animal status*

Based on camera trap monitoring results, ASRI has recorded at least 50 identified animal species in the vicinity of the reforestation area. The species detected include not only endemic animals but also endangered species that are now returning to their natural habitats.



## Returned Wildlife - based on IUCN Status





# Work Approach

Our approach is rooted in the belief that human health and the health of the Earth are interconnected, and that the best solutions emerge when we truly listen to the communities living closest to the forests.

## *Planetary Health: Healing People and the Earth Together*

Planetary Health is at the core of ASRI's entire operational ecosystem. Planetary Health is an approach that affirms that human health is deeply dependent on the health of the natural systems that sustain life on Earth. This concept emphasizes the importance of preserving ecosystems, the climate, and biodiversity to ensure sustainable human development. The goal is to guarantee long-term human well-being without exceeding the planet's ecological limits.

The concept of planetary health was introduced by The Lancet Commission on Planetary Health in 2015, and ASRI stands as one of the most tangible examples of its implementation at the community level. This model is globally recognized as a successful approach that integrates health services, forest conservation, and community economic empowerment.

## *Key Principles*

This approach does not view humans as the cause of environmental problems, but as part of the solution.

Therefore, healing people is the first step toward healing nature.

## *Field Implementation*

ASRI applies planetary health across four key sectors:

FIELD	PROGRAM FOCUS
Health	Clinics, Mobile Clinics, Optometry, TB DOTS, Health Promotion
Forest Conservation	Forest Monitoring, Forest Guardian, Forest Rehabilitation
Livelihoods	Chainsaw Buyback Program, Goats for Widows, Eco-Polybags, Sustainable Agriculture
Planetary Health Education	ASRI Kids, ASRI Teens, Planetary Health Camp, Planetary Health Lecture, and Teacher Training

This approach demonstrates that inequities and barriers to access are at the root of social and ecological conditions within communities, particularly those surrounding forests.

*The Planetary Health approach implemented by ASRI has become a global reference model, cited in various academic publications and international forums, including the Planetary Health Alliance—which was then based at Harvard—which featured ASRI as one of the case studies in 'Medical Clinics for Planetary Health'.*



# Radical Listening

## *Listen Before Healing*

If Planetary Health is the goal of ASRI's grand mission, then Radical Listening is ASRI's vehicle to get there.

Radical Listening was born from the belief that no solution can be successful without first listening to those who are most affected, because those who live there are the experts, not outsiders.

### *Key Principle*

Here, 'radical' means listening deeply, without assumptions, without lecturing, and without imposing solutions from outside. ASRI has practised this method since its inception, by asking communities directly about the challenges, needs and problems they face.

### *Implementation*

The Radical Listening approach is consistently applied throughout all stages of ASRI's programs, from planning and implementation to evaluation. This process ensures that the community's voice forms the basis for decision-making and that each program truly responds to the needs of the community.

The steps involved include:

Asking the right trigger questions to the community in each assisted village before starting a new program, then giving the community space to lead the conversation.

Listening attentively verbally and nonverbally to understand the needs, aspirations, and dynamics of the group without directing or interfering with the answers.

Gather input from as many community representatives as possible, including women's groups, youth, traditional leaders, and families living near the forest.

Reflect on and summarize the results of the conversation using the community's own words to ensure accurate understanding and consensus.

Build programs together with the community, rather than simply socializing plans, so that solutions arise from the community and strengthen a sense of ownership.

Conducting regular participatory evaluations to monitor program effectiveness, adjust strategies if needed, and ensure the program remains relevant to the community.

Through this approach, the community is not only the beneficiary but also part of formulating solutions to the challenges and problems they face.



# Work Areas

## Bukit Baka Bukit Raya National Park

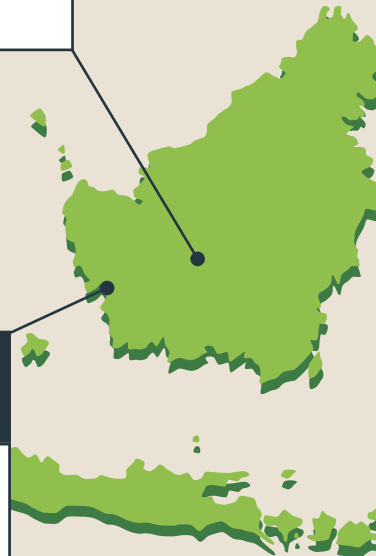
### WEST KALIMANTAN

Since 2018, ASRI and TNBBBR have collaborated to protect the area and conduct various ecological studies, including the potential of medicinal plants and the identification of tree species suitable for rehabilitation. This collaboration is further strengthened through the Forest Guardian and the monitoring of disturbances in buffer villages surrounding BBBR, as well as community empowerment initiatives through sustainable agriculture and locally based healthcare services delivered by community health workers, to enhance social-ecological resilience around the national park.

## Gunung Palung National Park

### WEST KALIMANTAN

Since 2007, ASRI has initiated health and conservation programs around Gunung Palung National Park. In 2009, ASRI, TNGP, and local communities began working together on forest rehabilitation while maintaining hundreds of hectares of planted areas. This collaboration also includes wildlife biomonitoring, patrols to prevent disturbances through the Forest Friends Program in buffer villages surrounding Gunung Palung National Park, conservation education based on Planetary Health, as well as the development of alternative livelihoods and eco-status-based healthcare services to support communities living around the forest.





## North Tambrau Nature Reserve

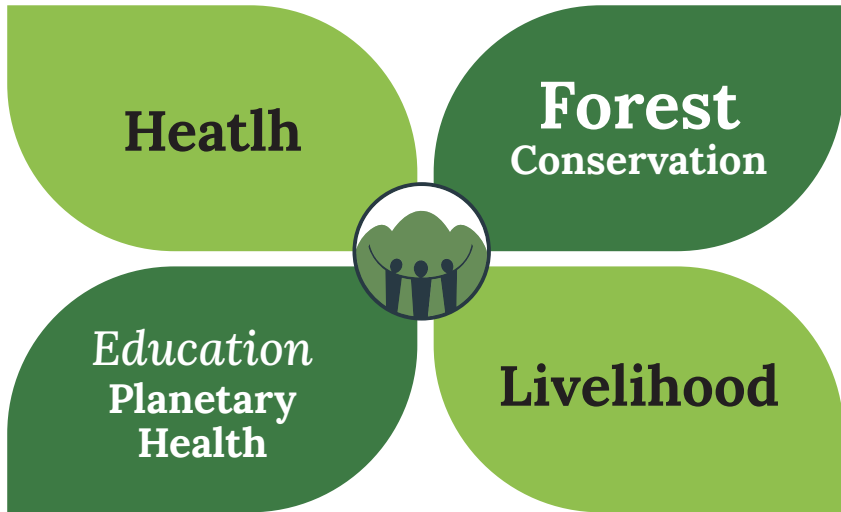
WEST PAPUA

Since 2024, ASRI and BBKSDA have been working together to strengthen conservation efforts in the North Tambrau Mountains Nature Reserve through flora and fauna inventories, wildlife monitoring using camera traps and bioacoustic methods, and studies on ecosystem restoration sites. Additionally, the Forest Guardians is being developed, along with monitoring of disturbances in the area, support for alternative livelihoods for 13 community groups, and ecosystem-based health services and conservation education in the supported villages to reduce pressure on the area.





# Programs



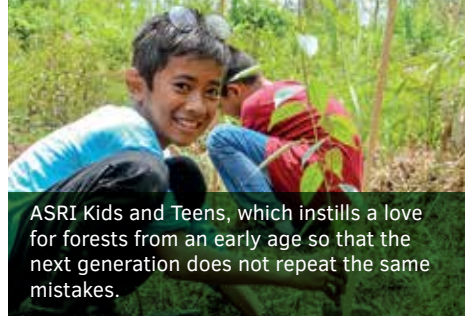
For nearly two decades, ASRI has understood that protecting forests cannot be achieved through bans alone, as there are complex underlying issues that must also be addressed.

Thus, a series of interconnected and mutually supportive programs were launched, such as:





The Goats for Widows Program, which empowers women to regain their independence.



ASRI Kids and Teens, which instills a love for forests from an early age so that the next generation does not repeat the same mistakes.



Organic Training



Reforestation



Forest Monitoring



TB Prevention



Optics

*This is the ASRI ecosystem where Planetary Health becomes a reality.*

*From a small clinic on the edge of a Kalimantan forest, a major movement has grown, proving that humans and forests can coexist without harming one another.*



## a. Health

Data 2021-2025:

Jumlah..	2021	2022	2023	2024	2025
Total number of patients	8,040	12,807	10,466	10,473	7,237
Number of visits to the mobile clinic	121	460	891	926	685
Number of recipients of reading glasses	529	298	12,947	1,115	166
Number of TB patients	75	84	54	176	220

*The cure rate for TB patients is nearly 100%*

### Highlighted Program: Health Clinic

#### **ASRI Clinic Brings Hope for the Future**

In the early 2000s, the Kayong Utara and Ketapang regions were among the areas with the highest poverty rates in West Kalimantan. The distance to health facilities could take more than three hours by land or river not only was the travel time long, but the transportation costs were also high.

When they fell ill, many residents sold forest products or cut down valuable trees such as meranti, bengkirai, and ulin just to pay for medical treatment.

ASRI views this issue not merely as a problem of medical facilities; more than that, ASRI sees it as a form of ecological injustice. If communities lack access to healthcare and viable alternative sources of income, they may continue to cut down forests simply to survive.

Therefore, the solution must address two issues at once: health and conservation. Using the “Radical Listening” method, ASRI collaborated with the community to create a creative solution. Thus was born the “Pay with Seedlings” concept a simple approach where healthcare services can be paid for with tree seedlings. By assigning value to these seedlings, the community learns that they can now access healthcare without sacrificing the forest. Indirectly, ASRI offers a new perspective to the community: that we can thrive while preserving trees and nature.



This payment method has evolved. Now, tree seedlings can also be saved. Furthermore, it's not just tree seedlings that can be used as payment; patients can exchange other agricultural products or perform community service.

As a result, not only have the forests turned green again and community health improved, but ASRI has also fostered a more environmentally friendly lifestyle among the community.

### **ASRI Clinic: A Comprehensive Inclusive Healthcare System**

Since its establishment in 2007, ASRI Clinic has continued to grow into a health center based on Planetary Health principles.

With a range of healthcare facilities including:

- General and dental clinic.
- Maternal and child health (MCH) services.
- Laboratory and pharmacy.
- TB and chronic disease programs.
- Optometry program (2024).
- Mobile Clinic for remote areas

In addition to Sukadana, Kayong Utara, West Kalimantan, ASRI also serves communities around Bukit Baka Bukit Raya, West Kalimantan, and Tambrauw, West Papua.

### *ASRI Clinic Progress Over the Last 5 Years*

Total..	2021	2022	2023	2024	2025
Number of Patients Treated	6,018	4,668	7,809	7,057	9,200
Samples Received from Patients	18,735	21,155	15,779	25,090	12,641



## *Five-Year Trends: Growth in Health and Environmental Awareness*

### *Patient Visits*

The number of patient visits at ASRI clinics has consistently increased year over year, indicating not only that ASRI's programs are becoming more widely known and trusted by the community but also that more people are no longer afraid to seek medical treatment due to financial constraints.

### *Mobile Clinic*

Driven by a spirit of inclusivity, ASRI has also developed a Mobile Clinic to reach those living far from medical services. By optimizing two vehicles, ASRI has created a system that no longer focuses on the quantity of patients served, but on the quality of care ASRI provides in the villages within its reach.

## *Environmental Awareness and Land Reforestation*

Through ASRI's clinic program, which offers residents the option to pay for healthcare costs with tree seedlings, the community has gained awareness of the importance of the environment.

### *The "Pay with Tree Seedlings" Program Raises Awareness and Revitalizes Forests*

The "Pay with Seedlings" system is at the heart of ASRI's philosophy: health and forests sustain one another.

Each patient can pay for treatment with:

- Local tree seedlings (e.g., meranti, durian, jengkol, petai).
- Handicrafts.
- Animal manure for organic fertilizer.
- Or through labor

Since its founding in 2007, ASRI has successfully planted over 700,000 tree seedlings in reforestation areas such as Laman Satong, Sedahan, etc., with approximately a quarter of the planted seedlings contributed by patients.

These saplings are not merely a payment but also a form of community social engagement. When patients come for treatment, they help replant the forests that have been lost.

### *Healing People, Healing Forests*



Over the past five years, thousands of patients have come to the ASRI Clinic for treatment; some pay with money, others with tree seedlings. Every seedling they bring serves not only as a form of payment but also as a collective effort to reforest once-damaged forests.

ASRI also recognizes one crucial fact: restored health won't last long if the forests around them remain sick.

Thus, the next program isn't just about healing people but giving them a new reason not to return to the forest with a chainsaw in hand.

*Story from the Field:*

*Planting Hope in the Heart of the Forest*

As a nurse at ASRI's mobile clinic, my job is to venture into remote areas to serve those far from healthcare access. In December 2023, as our team was preparing to return home after a tiring shift, a villager came pleading for help. His grandfather was severely injured.

Although the journey back to base would take six hours and it was getting dark, my heart was moved. At the patient's home, I found the grandfather suffering from hypertension and a deep puncture wound on his leg caused by a river log. However, when I suggested that the wound be stitched immediately, he refused. His face betrayed anxiety over the cost he could not afford.

This is where the magic of the ASRI system comes into play. I explained to him that he didn't need cash; he could pay for his medical expenses with plant seedlings. His tension melted away instantly, and he agreed to be treated.

The suturing process dragged on until dusk due to limited equipment. As a result, our journey home became a major challenge a broken bridge, heavy rain, and muddy roads forced us to spend the night on the road. However, all that exhaustion vanished knowing that a life had been saved without having to destroy the forest to pay for medical costs.

This experience reaffirmed why I stay. Working here has made me realize just how closely intertwined humans and the forest are. If the forest is destroyed, human health is threatened, and biodiversity is lost.

Through the saplings he received, the elderly man not only healed his own wounds but also helped restore the lungs of the world. For me, that is the most beautiful reward.





## b. Nature Conservation



*Reforestation: Intensive Planting and Garden to Forest*



*Chainsaw Buyback*



*Forest Monitoring through "Sahabat Hutan"*

Chainsaw Tower ASRI





## Highlighted Program:

# Chainsaw Buyback

Conflict Context: Nature Conservation vs. Survival

In the past, residents were forced to become loggers just to survive

### Radical Listening Approach

We listen to the needs of every party, understanding them without judgment:

Loggers: We want to survive without having to cut down the forest, but how?

The Forest: It offers a source of life without having to be destroyed.

### Implemented Solutions:

- 1 Loggers hand over their Chainsaws



- 2 ASRI provides business capital



IDR 10 millions  
for active loggers

IDR 3 millions  
for passive loggers

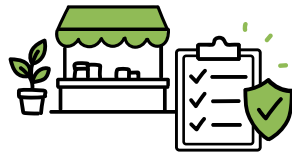


- 3 Entrepreneurship training and mentoring



### Outcomes

Legal and stable micro-enterprises  
replace illegal logging



Financial security ensures access  
to education and healthcare services





The Chainsaw Buyback Program is one of ASRI's flagship initiatives, through which ASRI provides an alternative source of income for loggers by purchasing chainsaws from those who wish to stop engaging in illegal logging activities.

In exchange, they receive:

- Micro-enterprise capital (an average of Rp. 10 million for those whose primary livelihood is logging, and Rp. 3 million for those who already have other sources of income besides logging).
- Entrepreneurship training and mentoring.

The chainsaws handed over to ASRI are stored; some are turned into monuments, while others are repurposed into useful items such as hand tractors and farming tools like machetes. No chainsaws are resold because each unit is not merely a machine, but a symbol of a past that they wish to leave behind.

### *Achievements of the 2021–2025 Chainsaw Buyback Program (Cumulative)*

	2021	2022	2023	2024	2025
Active Logger	66	77	88	93	103
Passive Logger	144	166	188	210	236
Assorted Chainsaw	210	243	276	303	336

Over the past five years, more than 190 chainsaws have been bought back and destroyed, while 97% of participants have never returned to the forest to log.

Now they grow coffee, raise cattle and goats, sell honey, run small shops, or even work as forest rangers protecting the very places they once cleared.

### *Social and Ecological Outcomes*

This program doesn't just stop one chainsaw it changes the mindset of an entire community.

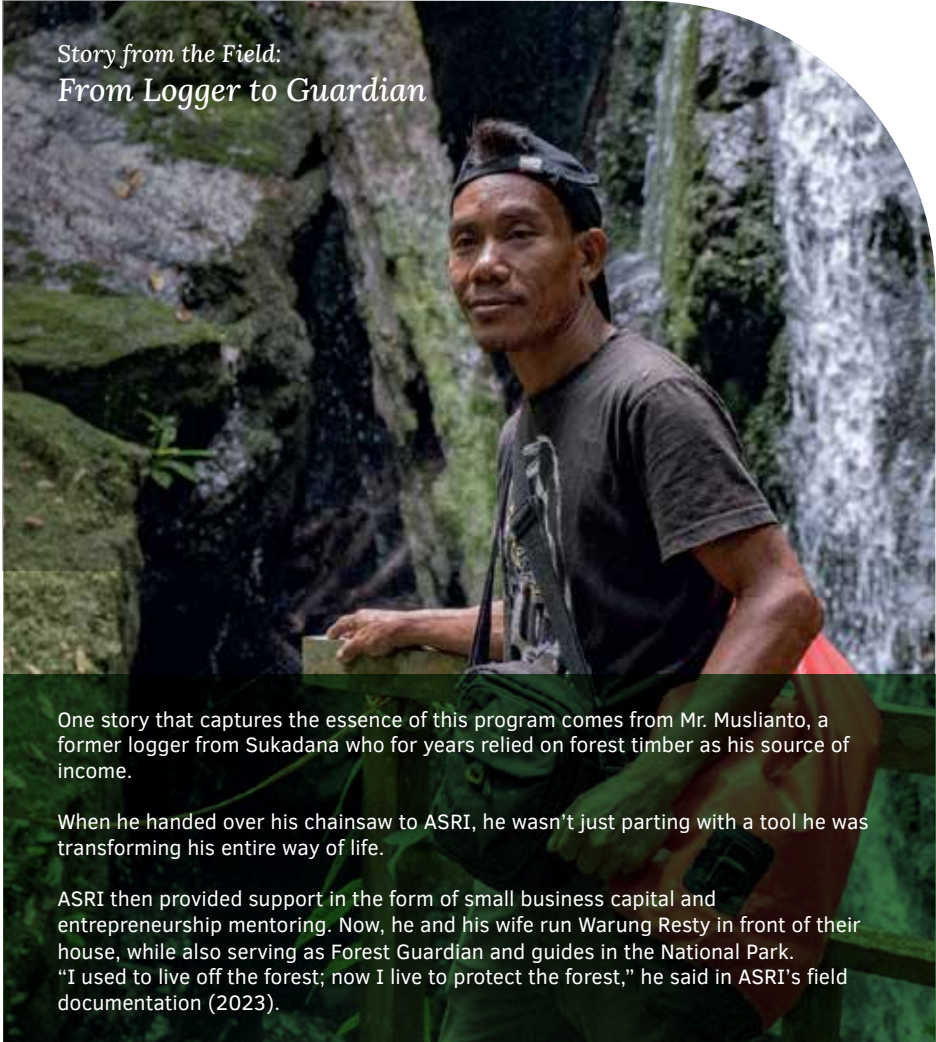
Since its launch in 2017 to the present:

- More than 300 people and their families have been supported in transitioning their livelihoods
- More than 90% of participants have consistently avoided returning to logging practices
- More than 150,000 trees are estimated to have been saved through this program

### *Caring for Today: Preserving a Restored Ecosystem*

In many places, conservation programs operate by passing judgment without attempting to understand, removing humans as the perceived cause without considering the underlying factors.

ASRI has chosen a complex and long-term approach to addressing existing issues. We listen and view problems from a broad perspective so that humans and nature can care for and heal one another.



#### *Story from the Field: From Logger to Guardian*

One story that captures the essence of this program comes from Mr. Muslianto, a former logger from Sukadana who for years relied on forest timber as his source of income.

When he handed over his chainsaw to ASRI, he wasn't just parting with a tool he was transforming his entire way of life.

ASRI then provided support in the form of small business capital and entrepreneurship mentoring. Now, he and his wife run Warung Resty in front of their house, while also serving as Forest Guardian and guides in the National Park. "I used to live off the forest; now I live to protect the forest," he said in ASRI's field documentation (2023).



## c. Economic Empowerment

### Alternative Livelihoods



Organic Farming Training



Goats for Widows



Chainsaw Buyback Program



Eco-Polybags

*Highlighted Program:*

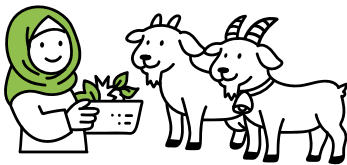
### Goats for Widows

*Together, Strengthening the Vulnerable and Nurturing a Growing Future*

#### Context:

- Loss of a spouse
- Loss of income

#### Initiatives Undertaken



**New source of income:**  
1 female goat to raise

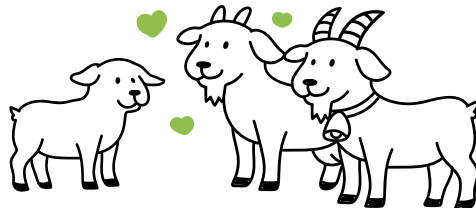
#### Outcomes



**More self-reliant lives**  
Income to pay for healthcare,  
children's education, housecare, etc

#### Why goats?

- Easy to raise
- Easy to breed
- Provides economic stability





### *The Real Impact of Goats for Widows So Far*

Since its inception, ASRI has helped facilitate a better life for 250 widows in the Gunung Palung National Park area and has distributed 313 goats for them to raise.

Each recipient receives one to two female goats and participates in regular mentoring sessions with the ASRI team.

Since its launch in 2009, the “Goats for Widows” program has successfully

- **Provided mentoring to 181 widows**
- **Distributed 313 goats**

*Notes: Each widow who receives a goat will continue to be mentored until she becomes self-reliant.*

### *More Than Just Aid: Goats as a Source of Hope for Self-Reliance*

This program not only provides goats but also builds a support system, including mentoring and livestock health training.


Through this process, many widows have ultimately been able to live more independently. Proceeds from livestock sales are typically used for children’s school fees, home repairs, healthcare costs, and family savings.



*Story from the Field:*

*Setiawati, a Modern-Day Kartini*

*Who Refuses to Be Held Back by Limitations*



Since childhood, Setiawati has lived with many limitations; at one point, her father even forbade her from attending school. However, she secretly enrolled anyway and worked hard to consistently be a top student. After facing various life challenges including becoming a widow who had to raise her children on her own she continued to work at any job just to get by.

Her journey took a turn when she joined the ASRI program. In 2012, she was entrusted with the role of Coordinator for the “Goats for Widows” program, which aims to economically empower widows.

Today, Setiawati has mentored more than 250 widows. For her, this work is not merely a program, but a way to support one another. “ASRI is like a foster mother who guided me until I could stand on my own and help other women,” she said.



## d. Education

The Planetary Health Education Program includes ASRI Kids, ASRI Teens, Teacher Training, PH Camp, PH Lecture, and Community Outreach Education. Through this series of programs, participants are encouraged to understand the close interconnection between human health and environmental health as an integrated system that influences one another. In addition, the program emphasizes the importance of both individual and collective roles in maintaining ecosystem balance to support a healthy, harmonious, and sustainable future for present and future generations.

*Total people reached through ASRI's education programs*



*Highlighted Program:*

### ASRI KIDS

#### ***Cultivating the Future Through the Next Generation***

ASRI Kids is ASRI's initiative to cultivate the future. Believing that the Earth's future lies in the hands of future generations, ASRI has begun instilling in children's hearts an understanding of the importance of protecting forests.

From this conviction, ASRI Kids was born a program that does more than just teach; it instills a love for nature and a sense of ecological responsibility from an early age.

#### ***A Program to Protect Forests for the Future***

The ASRI Kids program is rooted in the same philosophy as the entire ASRI ecosystem:

*“Human health and the health of the Earth are inseparable.”*

Through play-based, storytelling, and hands-on learning in nature, children are introduced to:

- The functions and roles of forests in daily life
- The cycles of water, air, and soil
- The importance of protecting endemic animals such as orangutans and hornbills
- How to plant and care for trees
- As well as the values of empathy, responsibility, and collaboration
- The prohibition against hunting or harming wildlife



This program takes place not only in schools but also in the field along riverbanks, in nurseries, and in ASRI's partner villages around Gunung Palung National Park (TNGP) and Bukit Baka Bukit Raya National Park

### ***From the Classroom to Nature: A Field Education Model***

ASRI Kids don't just learn theory; they also go on field trips to the forest and sometimes participate in environmental projects with ASRI.

### *Quantitative Goals (2021–2025)*

	2021	2022	2023	2024	2025
Participating Schools	17	22	25	28	16
Children Directly Involved	780	1,025	1,250	1,420	505

### 5-Year Trend Since the ASRI Kids Program Began

- Participant numbers have grown by an average of 23% per year
- More than 5,000 children have been directly involved in ASRI Kids activities since 2020

### ***Social and Environmental Outcomes***


The ASRI Kids program not only changes the way children think but also inspires their future.

- >70% of participating families report engaging in eco-friendly activities at home (planting, sorting waste, or saving seeds).
- More than 20 schools now have mini-gardens created through student initiatives.
- Local teachers have begun incorporating environmental topics into the official school curriculum.
- Many ASRI Kids participants choose college majors aligned with ASRI's values and later work with ASRI or other nature conservation organizations.

ASRI Kids proves that environmental education is not just about science, but about planting hope that grows in the hands of children who will become the future guardians of the Earth.



*Story from the Field:  
Growing Up with Nature:  
Nisya's Journey from Student to Advocate*



For Chairunisya Nur Oktaviani, or Nisya (25), ASRI is not just a workplace, but a place where she has grown up since childhood. Her introduction to conservation began in an English class with Ms. Etty and continued through her active participation in the ASRI Kids program. One of her most memorable experiences was an expedition to Tanjung Puting, where she saw orangutans in their natural habitat and began to understand the importance of protecting the forest.

ASRI also helped build her self-confidence starting in junior high school by giving her the opportunity to teach her peers. "After getting involved with ASRI, my perspective changed. I came to understand that all human actions are connected to the state of nature," she said.

Now Nisya has returned to ASRI as a teaching staff member, hoping to foster the same awareness in the younger generation to protect nature and the future of their region.



## e. Research

### *From Data to Action*

Research is a vital component of ASRI's work in understanding the social and ecological conditions in the areas it supports. One of ASRI's research focuses is exploring knowledge about medicinal plants a biological and cultural treasure that has long been an integral part of the lives of forest-adjacent communities. This effort ensures that local knowledge can serve as the foundation for conservation that is more inclusive and relevant to local communities.



This research on medicinal plants is conducted in collaboration with the Center for Ecology and Ethnobiology Research and the Center for Research on Medicinal Raw Materials and Traditional Medicine at BRIN. Using an ethnobotanical approach, the ASRI team interviewed indigenous people in three intervention areas Gunung Palung National Park, Bukit Baka Bukit Raya National Park, and the North Tamrau Mountains Nature Reserve to document local knowledge regarding the use of medicinal plants. From these interviews, ASRI successfully gathered information on the types of medicinal plants, their uses, and the cultural values associated with them.

The initial documentation has resulted in the book "Preliminary Study on Bioprospecting and Medicinal Plants in Bukit Baka Bukit Raya National Park." Currently, the compilation of a book on medicinal plants for Gunung Palung National Park and the North Tamrau Mountains Nature Reserve is underway as part of ongoing research at both locations. These findings form the basis for the implementation of ASRI's medicinal plant inventory from Kalimantan to Papua.



**Protecting Forests, Caring for People:  
The Trail of Medicinal Plants from Kalimantan to Papua**

The medicinal plant inventory activities are conducted in phases, involving BRIN teams, national park management agencies and/or natural resource conservation offices, stakeholders, and local communities. In 2023, activities began in the Bukit Baka Bukit Raya National Park (TNBBBR) area with the Dayak Uud Danum community; in 2024, they continued in the Gunung Palung National Park (TANAGUPA) area with communities predominantly composed of Malay and Dayak people; and in 2025, the medicinal plant inventory activities were carried out in the North Tamrau Mountains Nature Reserve, Tambrauw Regency, West Papua, together with various indigenous community groups.



Local knowledge regarding the use of plants as medicine is a tradition passed down through generations that is still actively practiced today. Information about plant species, methods of use, and customary rules is obtained directly from local communities. Research findings indicate a high level of biodiversity among medicinal plants in Indonesia, with a wide range of growth forms from ferns, epiphytes, shrubs, and vines to trees.

Documenting this local knowledge is crucial for the sustainability of biological resources and the culture of indigenous peoples and local communities. The potential of these locations can be further developed through bioprospecting, including sample collection and laboratory testing, to produce standardized herbal medicines (OHT) and phytopharmaceuticals. This research has yielded important findings regarding the richness of medicinal plant species at the three ASRI intervention sites. The following is the number of medicinal plant species identified through this activity:

**Bukit Baka Bukit Raya National Park**  
(BBBR National Park)

**100**  
species

**Gunung Palung National Park**  
(TANAGUPA)

**105**  
species

**North Tamrau Mountains Nature Reserve**

**66**  
species



# Replicating the ASRI Model *in Other Regions*


## *a. BBR National Park*

ASRI supports the management of BBR National Park through community-based forest monitoring, the “Forest Guardian” program, and by assisting the park in protecting the area.

At one of its previous project sites, Nusa Poring Village, ASRI has already begun tree-planting activities with the community in several community gardens. However, for the current project sites Rantau Malam and Nanga Jelundung villages ASRI is starting by conducting an ecosystem restoration assessment and preparing a tree-planting program. ASRI is also working to improve the well-being of communities in these two buffer zone villages of the National Park through health services and community economic empowerment.

*Story from the Field:*

*Protecting Forests, Nurturing Life:  
The Journey of the Mobile Clinic  
in the Heart of Kalimantan*



From May through October 2025, the ASRI Foundation provided mobile health services through its Mobile Clinic in the villages of Rantau Malam and Nanga Jelundungi. There, indigenous communities live in harmony with nature, and they eagerly await the arrival of the ASRI Mobile Clinic team to receive treatment and health checkups. After an eight-hour journey down the Kapuas River, braving the scorching sun, and traversing a landscape that reveals the beauty of the still-lush forest alongside the deep scars caused by illegal mining that pollutes the water and tears apart the land of life, the Mobile Clinic arrives to continue fostering hope for the community.

Throughout 2025, at least 1,247 patient visits were served by ASRI Clinic at BBR, in collaboration with the Sintang Health Office and Serawai Community Health Center. On every visit, the Mobile Clinic team brings not only medicine but also a message of love: that protecting human health is just as important as protecting the forest, the very place they depend on for their survival. This initiative also received support from the village government, with the Village Head of Nanga Jelundung in attendance for the occasion.



## b. Tambrauw National Park, Papua

ASRI began its work in Papua in 2021–2022. ASRI initiated an assessment process and feasibility study in Jayapura Regency, Papua, and Tambrauw Regency, West Papua, through strategic partnerships, the Radical Listening method, and baseline surveys. This process provided deep insights into the needs and aspirations of the community, which converged on three key priorities: improving health services, developing alternative livelihoods, and expanding access to education. Based on the findings of this study, ASRI decided to replicate its program in Tambrauw Regency, specifically in the Miyah and Muhrani Districts located near the North Tambrauw Mountains Nature Reserve.

This initiative evolved following significant deforestation findings in other districts of Tambrauw. Woodwell satellite data revealed increased forest loss in Fef, Kwesefo, and Syujak Districts during the 2021–2022 period, prompting ASRI to take further action. In May 2024, ASRI conducted a scouting trip to the area and designated Fef and Syujak Districts for further assessment through Radical Listening. Subsequently, in June 2024, ASRI prepared to conduct comprehensive data collection including Radical Listening and an initial biodiversity survey—in collaboration with the West Papua Natural Resources Conservation Agency (BBKSDA), the Forestry Service of South West Papua Province, and local communities, to ensure that every step truly stems from the voices and needs of the community.

Currently, there are 13 villages that have become ASRI project sites:

- |            |              |                 |
|------------|--------------|-----------------|
| 1. Iwin    | 6. Iof       | 11. Waru        |
| 2. Esyum   | 7. Ayapokiar | 12. Marbuan     |
| 3. Syujak  | 8. Siakwa    | 13. Bariambeker |
| 4. Banzo   | 9. Airfair   |                 |
| 5. Frafane | 10. Warokon  |                 |



- Number of patients recorded at the mobile clinic: 100 people
- Number of community members who participated in birdwatching site management training: 16 people from 3 districts (Fef, Miyah, and Syujak)
- Number of community members who participated in livestock farming training: 12 people from 4 hamlets—Marbuan, Warokon, Waru, and Bariambeker.



# Future Plans

Moving forward, ASRI will strengthen its Planetary Health approach to better address the evolving ecological, health, and social challenges. With continued support from partner organizations, the government, donors, academic institutions, the private sector, and especially local communities, we are preparing strategic steps to expand our impact in the coming years.

*The main focus of our plan includes:*

## ***1. Expanding Forest Restoration and Protection***

ASRI will accelerate the restoration of critical landscapes, including a target of restoring approximately 180 hectares over the next three years, as well as expanding collaboration with national parks and communities surrounding the forests.

## ***2. Improving Health Services for Indigenous and Remote Communities***

In collaboration with the Ministry of Health, ASRI plans to expand health services and provide more equitable access to healthcare for indigenous and remote communities living near forest areas.

## ***3. Strengthening Research on Medicinal Plants and Traditional Knowledge***

ASRI will deepen research on medicinal plants, ethnobotanical knowledge, and their connection to public health and resilience to climate change. Collaboration with national and international universities will continue to be expanded.

## ***4. Strengthening Indigenous Community Leadership and the Youth***

We will cultivate more young leaders through the Planetary Health education program and the Planetary Health Campus Ambassador program to ensure that local leadership becomes stronger and more sustainable.

## ***5. Promoting Nature-Based Economies***

ASRI will expand economic empowerment initiatives such as agroforestry, women's groups producing eco-poly bags, and small businesses, so that communities can achieve stable livelihoods without damaging the forest.

## ***6. Strengthening Research, Monitoring, and Cross-Sector Collaboration Systems***

Scientific data and monitoring systems including those related to biodiversity, bioacoustics, and public health—will be strengthened. Cross-sector partnerships, including with government, academia, HIH, and the private sector, will continue to be developed.



# Acknowledgments and Appreciation

## *Testimony Partner: Treesister*



As an organization focused on tropical forest restoration through a global movement of women and communities, TreeSisters is always seeking partners who combine environmental restoration with tangible social impact. From the very beginning of our journey, we have believed that planting trees is not just about greening the earth, but also about restoring humanity's relationship with nature. It is with this spirit that we run a funding program for reforestation projects across the globe.

We began working with Alam Sehat Lestari (ASRI) in 2020 through a collaboration with Health in Harmony, and since then our relationship has developed very positively. ASRI's Radical Listening approach—where the needs and voices of the community are at the heart of every decision immediately resonated with our values. Throughout our interactions with the ASRI team, we've seen how they work with sincerity and deep respect for local communities, and how conservation solutions emerge from dialogue, not from external assumptions.

Throughout this partnership, we have supported the planting of more than 140,000 trees alongside ASRI, and every stage has been accompanied by honest, detailed, and fully transparent reports. We are also deeply inspired by their various innovations, such as a health service payment system using tree seedlings and health incentives for villages that protect their forests. All of this demonstrates ASRI's exceptional technical capacity, commitment, and integrity. Based on our experience, we firmly believe that ASRI is an organization worthy of support and recommendation for continued funding, as they are truly bringing about comprehensive change for the forests and for people.





## Achievements and awards

- 2023 Forest and Health Challenge UpLink by World Economic Forum
- 2023 Anugerah Konservasi Alam Nasional, Kementerian Lingkungan Hidup dan Kehutanan Republik Indonesia
- 2022 Ashden Awards - Natural Climate Solutions
- 2021 Equator Prize (Finalist)
- 2020 UN Global Climate Action Awards
- 2016 Kalpataru
- 2016 The Whitley Gold Awards
- 2014 Disney Conservation Hero
- 2013 Ashoka Social Entrepreneur
- 2013 Tupperware She Can Awards
- 2013 Liputan 6 Awards "Inspirasi Indonesia"
- 2012 KARTINI Award
- 2011 Whitley Fund for Nature



# Partners and Collaborators

ASRI's success is inseparable from the strong network of partnerships it has built since its inception—ranging from the ongoing support of Health In Harmony as a sister organization to close collaboration with the government, academic institutions, and donor partners. It is this synergy that enables ASRI to implement a Planetary Health approach in a tangible and sustainable manner across various supported landscapes.

## Government Partners

ASRI's work is closely tied to strong partnerships with government agencies and national conservation authorities that provide policy and logistical support in the field.

### *Key partners at the national and regional levels include:*

- Ministry of Health
- Ministry of Forestry (formerly the Ministry of Environment and Forestry)
- Gunung Palung National Park Office
- Bukit Baka Bukit Raya National Park Office
- West Papua South Regional Office of Natural Resources and Conservation
- Local Governments of Kayong Utara, Ketapang, Sintang, Melawi, and Tambrauw
- Health Offices of Kayong Utara, Ketapang, Sintang, Melawi, and Tambrauw
- Education Offices of Kayong Utara and Ketapang

*Administrative, regulatory, and program integration support for health and the environment.*

## Academic and Scientific Partners

ASRI serves as a living laboratory for many universities and global research institutions interested in studying how the concept of Planetary Health is practically applied at the community level.

### *Key academic and research partners include:*

- National Research and Innovation Agency (BRIN)
- University of Gadjah Mada – bioacoustic research partner
- Tanjungpura University – social and conservation research partner.
- Harvard Planetary Health Alliance – documentation of the ASRI model as a global case study. Harvard-ASRI Journal
- Stanford University – collaboration on research into community resilience against COVID.



## Donor and Philanthropic Partners

The sustainability of ASRI's programs is supported by the backing of donor partners who provide financial contributions as a key pillar, while also strengthening the organization through capacity building and technical assistance, including the provision of consultants to support ASRI's development as a continuously evolving organization.

*Some of the key donor and philanthropic organizations for the 2020–2025 period include:*

- David and Lucile Packard Foundation
- The Gift Trust
- Ibu Liz
- Bread for the World
- TFCA Kalimantan
- Arcus Foundation
- USFWS
- LCAOF
- Treesisters
- APVN
- Binnacle Foundation





## Corporate Partners

Private sector partners are also a vital part of ASRI's journey. Through long-term partnerships and creative support, these partners help deliver real solutions for forests and communities. Waterbom Bali, Bali Zoo, The Body Shop Indonesia, Phoenix Zoo, and others are examples of companies that have contributed to the success of ASRI programs.

## Local Communities and Organizations

Local communities are the foundation of all ASRI's work. Their support, participation, and trust ensure that each program not only operates but also survives and continues.

### *Examples of community collaborations include:*

- Forest Guardian (SAHUT): more than 50 active members who monitor the condition of forests and buffer zones.
- Drug Swallowing Supervisors (PMO): a community network that supports TB patients in completing their treatment.
- Youth Communities: groups of young people involved in environmental education and nature conservation campaigns.
- Various other local initiatives: including health cadres, women's groups of eco-polybag craftsmen, farmer groups, reforestation workers, and others who play a role in maintaining public health and forest sustainability.

---

---

# Financial Summary

Behind ASRI's journey and numerous achievements that have had a real impact on the environment and society is the extraordinary support of partners and donors who believe in our mission. Every step ASRI takes today is the result of their collaboration and the trust they have placed in us.

As a form of responsibility for this trust, this financial overview is compiled to show how each contribution is managed transparently and used to bring about sustainable change.



Income 2024		
Earning	Total (IDR)	Total (USD)
Grant	24,440,605,870	1,512,227
Donation	490,132,723	30,326
Optic	67,953,254	4,205
Clinic Earning	1,452.073,912	89,845
Other Earning	1,147,434,090	70,996
Visitor / Exchange Program	672,230,533	41,593
<b>Grand Total</b>	<b>Rp 28,270,430,382</b>	<b>\$1,749,191</b>

2024 Cost		
Program	Total (IDR)	Total (USD)
Alternative Livelihood	916,488,326	56,706
Education	741,388,035	45,872
Fundraising	1,828,671,566	113,146
Health	4,075,153,942	252,144
Forestry	3,120,269,476	193,062
Research	1,897,995,518	117,436
Admin & Operational support	8,030,507,649	496,876
<b>Grand Total</b>	<b>Rp 20,610,474,511</b>	<b>\$ 1,275,243</b>



2025 Income		
Penghasilan	Total (IDR)	Total (USD)
Indonesian Donor	1,087,998,047	64,831.25
Other Earning	1,310,180,003	78,070.55
Grant	33,454,888,867	1,993,498.32
Clinic Earning	1,313,617,981	78,275.41
Optic	44,838,811	2,671.84
Visitor / Exchange Program	278,370,458	16,587.44
<b>Grand Total</b>	<b>Rp 37,489,894,166</b>	<b>\$ 2.233.935</b>

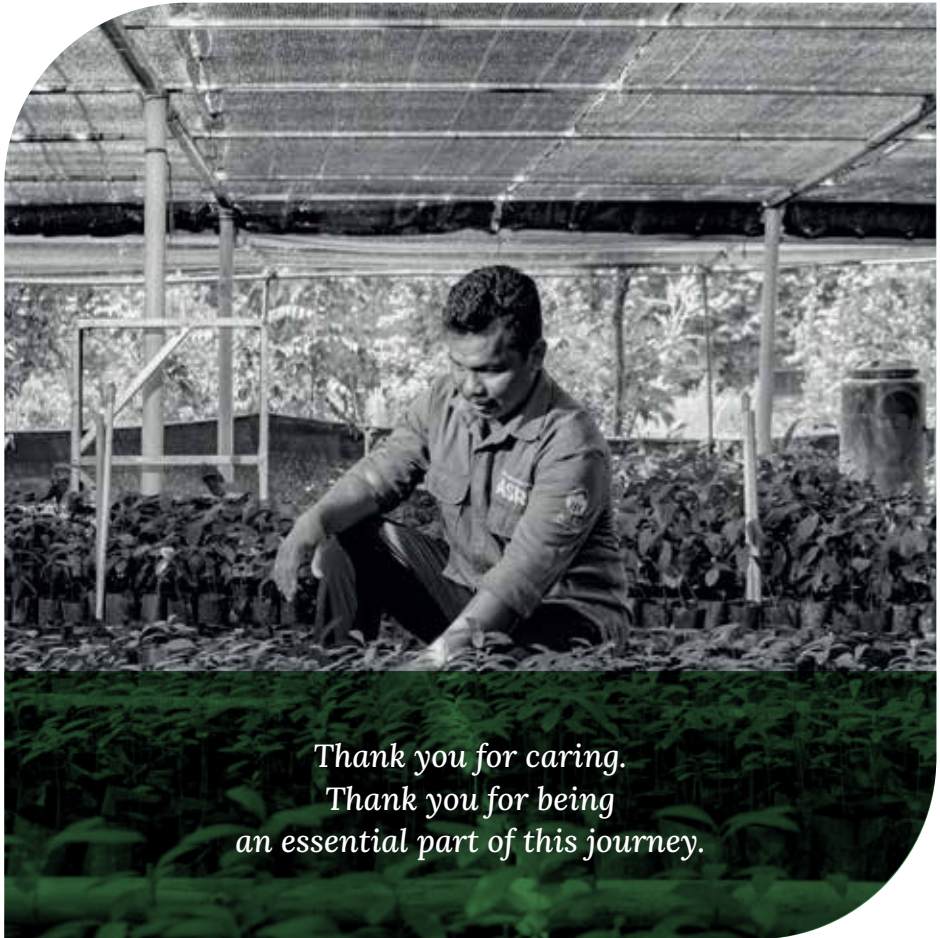
2025 Cost		
Program	Total (IDR)	Total (USD)
Fundraising	2,164,149,557	128,956.59
Forestry	3,233,515,567	192,677.60
Health	3,708,935,242	221,006.75
Livelihood	1,228,002,997	73,173.82
Education	649,158,998	38,681.86
Research	1,969,815,139	117,436
Admin & Operational Support	6,583,904,708	117,376.66
<b>Grand Total</b>	<b>Rp 19,537,482,208</b>	<b>\$ 1,164,193</b>



# Closing

Since 2007, every step ASRI has taken has only been possible thanks to the support of our partners and donors. Every tree that grows, every patient who recovers, and every child who learns to care for the earth is the result of a collaborative effort filled with trust, empathy, and hope.

ASRI would like to thank all our partners, donors, governments, communities, and field teams for their energy, time, expertise, and resources. Looking ahead, ASRI will continue to grow and spread benefits as long as we protect it together. Your support ensures forests remain sustainable, communities remain healthy, and hope remains alive.



*Thank you for caring.  
Thank you for being  
an essential part of this journey.*

## ***How to Contribute & Connect with ASRI***

### ***Donations & Program Support:***

[www.alamsehatlestari.org/donate](http://www.alamsehatlestari.org/donate)

### ***Collaboration & Partnerships:***

[info@alamsehatlestari.org](mailto:info@alamsehatlestari.org)

### ***Visit ASRI:***

[visit@alamsehatlestari.org](mailto:visit@alamsehatlestari.org)

### ***Headquarters Address:***

Jalan Sungai Mengkuang, Sukadana,  
Kabupaten Kayong Utara, Kalimantan Barat, Indonesia.

---

[www.alamsehatlestari.org](http://www.alamsehatlestari.org)

***Instagram: @alamsehatlestari***

