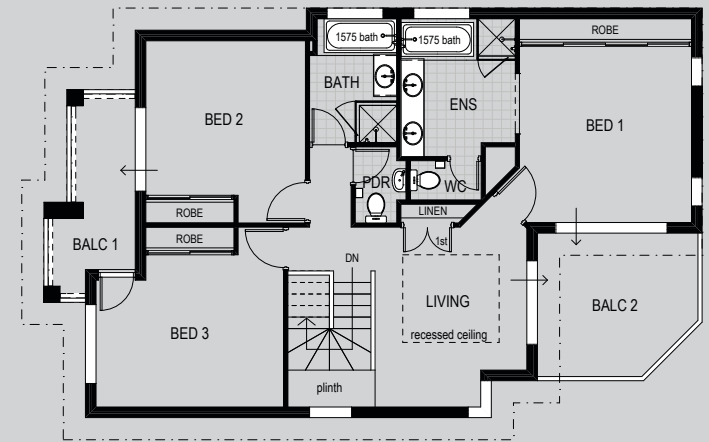
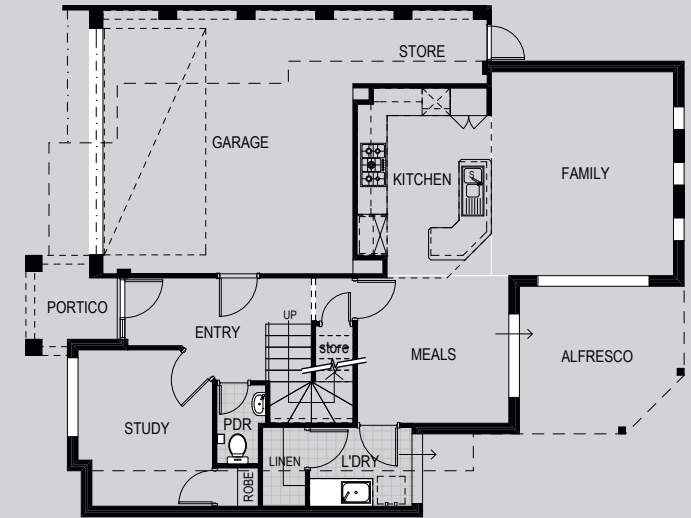




THE VISION

Triplex unit development

- The design brief was to produce a cost effective, elegant, individual development that would appeal to a broad range of buyers.
- The development was orientated to utilise the dual street and laneway frontages eliminating the need for a common driveway.
- Open plan living areas were laid out with a deluxe kitchen facing the dining and living room and opening onto the alfresco area.
- The aim was to create a triplex townhouse development in keeping with the area whilst giving an individual feel.
- These units were planned in order to maximise the north light entering the units.
- An additional upstairs living area leads out to a large balcony to take advantage of ocean views and optimise entertaining opportunities.

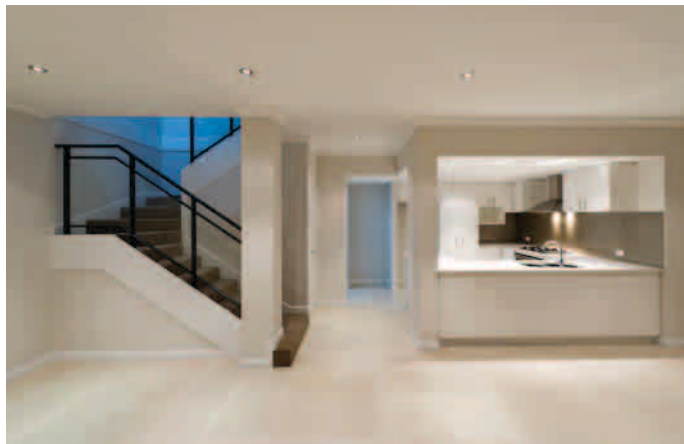


Unit 1

Ground Floor	78.67m ²
Upper Floor	95.74m ²
Garage/store	38.31m ²
Balcony 1	7.14m ²
Balcony 2	10.62m ²
Portico	3.62m ²
TOTAL.....	234.10m²

THE VISION

Triplex unit development



- We customise the design of your project to suit your budget and lifestyle requirements. We design for you using your vision to enhance your financial wealth.
- Our knowledge and experience makes the development process easy for you, from concept to council, construction, to the key in your hand. We take the stress away for you.
- Our in-house Building Designer works with you to create your personalised development.
- A fixed price contract with no hidden costs.
- One dedicated site supervisor who is on your site daily.
- A professional team of suppliers and subcontractors amassed since our inception to ensure a quality, yet cost effective development.
- A local, WA owned and operated family business with over two decades of experience.
- Honesty – the cornerstone of Integrity's success since 1997.
- An unbiased selection of building products and materials.

67 Howe St, Osborne Park WA 6017
T. 9202 6888 | F. 9202 6801

www.integritybuilders.com

THE INTEGRITY DIFFERENCE
SPECIALISTS IN MULTI-UNIT DEVELOPMENTS