



Asset Management & Tracking System

BY ACS GROUP

Enterprise Edition V.6

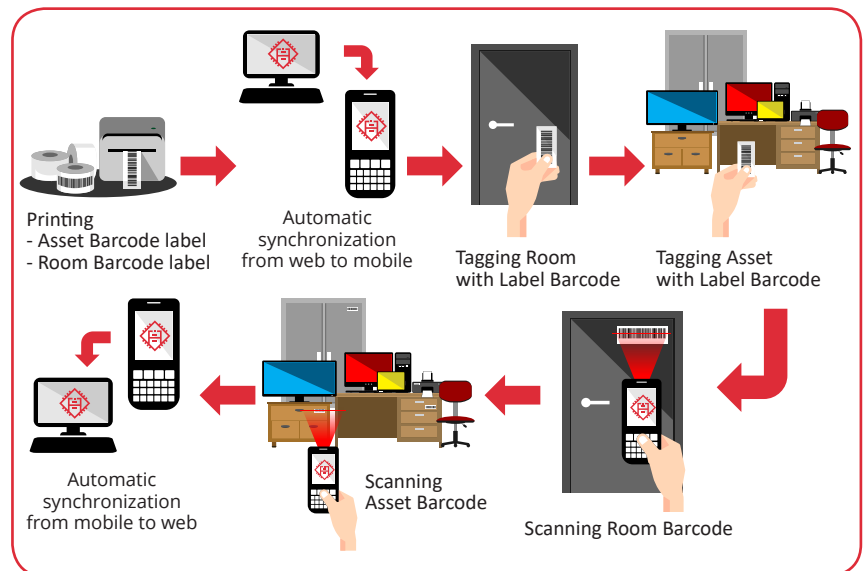
App Launch: July 2020

HIGHLIGHTS

- Unlimited number of assets
- Alert notifications for scheduled maintenance or disposal
- Informative report modules helps you manage your asset and collect data-driven feedback
- Multi-level user licenses (authorization), controlled by modules, menus and functions
- Define various choices of tracking field to the perfect field for your environment
- Import asset data from your database
- HTML5 web-based application with Android OS
- Simple filter options to quickly find specific asset
- Edit & update asset info
- Integrated with barcode reader & label printer
- Ensure data integrity with back-end system through interface facility via Excel File , Standardize AMTS format
- **On-Cloud alternative for optimal storage efficiency, security, and no extra cost for server procurement & maintenance**

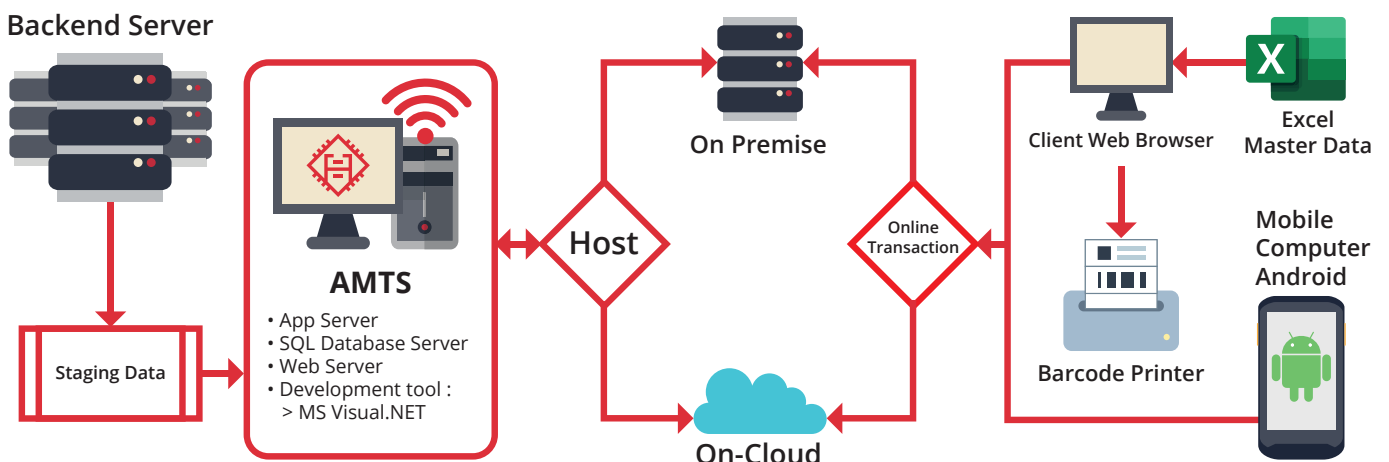
AMTS is specially designed to efficiently track corporation's valuable general-affairs assets such as laptops, computer, furniture, apparatus, and vehicles safely with dependable accuracy. Time wasted locating the asset and the chances of information lost is reduced significantly.

AMTS simplifies the process of registering assets & types of assets, conduct borrow/return and its due date, display historical transaction and schedule periodic maintenance/repair. Asset-related documents such as warranty, user manual, and purchase registration can also be attached in this system.



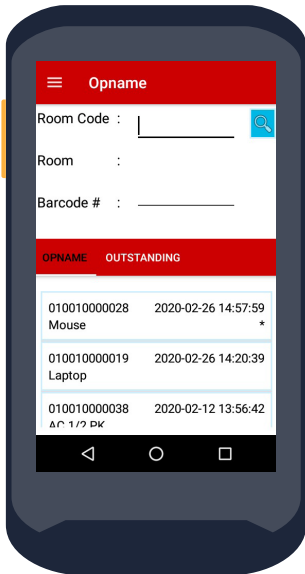
Share data within your network

AMTS is a multi-user application that allows you to share data and report across your authorized network. On-Cloud option frees you from the need to maintain a physical server infrastructure. AMTS is HTML5-based app with Android OS, built on the Microsoft Infrastructure and uses Microsoft® SQL Server® Database



Critical Event Notification Trigger

Managed by rule setting, enlisted users will get a synchronized instant feedback on asset related events, allowing a better information spread.



Eliminate inconsistencies by simple audit & verification

Ensure asset existence and its respective owners while monitoring everyone who access the application and input changes

Asset Component Management

An asset may consist of several components in which each "sub-assets" need also to be separately tracked. For instances, a PC has a sub consisting of a screen monitor, keyboard, mouse, and printer. Manage and classify sub-assets of a main asset with ease using this module.



- Supporting Hardware**
- Barcode printer
 - Label and ribbon
 - Mobile computing device



Asset Duplication

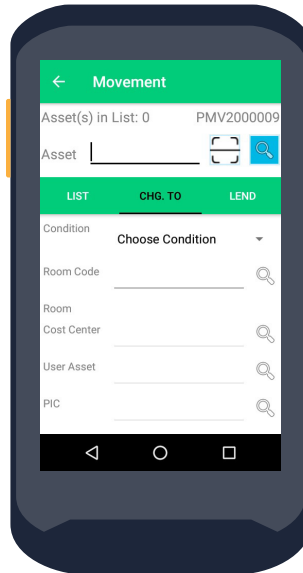
Safe time in entering asset detail that has the same entry with ones already inputted. With this module you can simultaneously add, for instance 25 units of PC with the same features.

Asset Disposal

Have a regulated entry of disposal on each asset that are deemed "end-of-life" or no longer needed to be tracked.

Asset Entry Point

Clearly defined input template of every traceable asset, it has several pages options of category choices to ensure easy findings each time any user conduct a stock opname.



Asset between Branches

Move your assets around without losing track of its whereabouts.

ACS GROUP
PT. AUTOJAYA IDETECH
PT. SOLUSI PERIFERAL
www.acsgroup.co.id

Jakarta (HO)
Perkantoran Gunung Sahari Permai #C03-05
Jl. Gunung Sahari Raya No 60-63 Jakarta 10610
Telp : +6221-4208221(H), 4205187(H)
Fax : +6221-4207903, 4207904, 4205853

Cikarang
Cikarang Square Blok E No 62,
Jl. Raya Cikarang Cibarusah Km 40,
Cikarang Barat, Bekasi
Telp : +6221.29612366, 29612367
Fax : +6221.29612368

Semarang
Grand Ngaliyan Square Blok B No.18,
Ngaliyan 50181, Semarang
Telp : +6224.76638092, 76638093
Fax : +6224.76638096

Surabaya
Komplek Ruko Gateway Blok D-27
Jl. Raya Waru, Sidoarjo 61254
Telp : +6231-8556277(H); 8556278
Fax : +6231-8556279

Denpasar
Ruko Grand Sudirman Agung Blok B No.29,
Jl. PB Sudirman, Dauh Puri Kelod,
Denpasar Barat, Denpasar - Bali 80114
Telp : +62361-4457859
Fax : +62361-4746526