



Issue 5: December 2022

BATTERY BOOSTER BB

FITTING INSTRUCTIONS



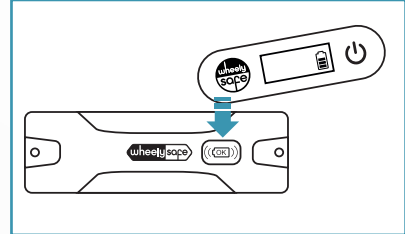
STEP-BY-STEP FITTING GUIDE

Preparing and planning to fit the Battery Booster (BB):

Switching on the Battery Booster:

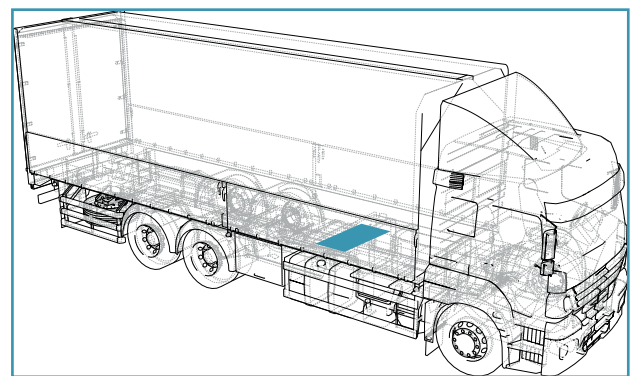
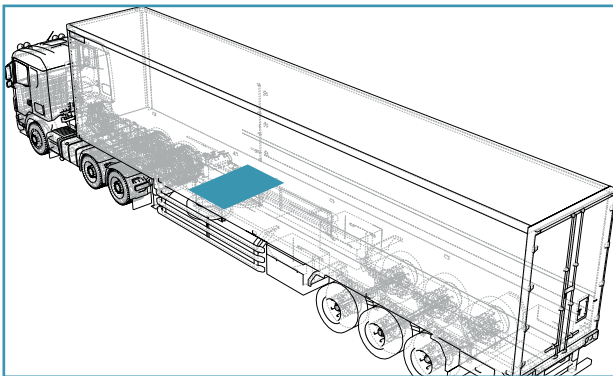
Switching on the BB:

- Switch on the Pressure and Brake Temperature Checker (PC).
- Place the Wheely-Safe logo on the PC over the BB dock recess for 20 seconds.
- When the BB switches on, PC will bleep once and show "ON" on the screen.



Fitting the Battery Booster:

1. The BB is a device that amplifies signals it receives from sensors. It is used on larger vehicles and vehicles that are heavily shielded. the BB is positioned underneath the middle of the chassis, equidistant between the vehicles' front steering axle and the rear axle set. The images below indicate approximate location of the BB. Additional guidance on positioning the BB on your vehicles is available from Wheely Safe.



2. Make sure that the fitment area is clear of rust, moisture, dirt and grease prior to fitment.
3. To aid with the location of the Battery Booster, remove the backing from the adhesive pad on the rear. Please take care not to touch the exposed adhesive surface.
4. Position the Battery Booster in the desired location and press the adhesive pad into the fitment surface firmly for a minimum of 10 seconds to allow for maximum adhesion. You must also use a permanent fixing method, utilising the mounting holes provided for this purpose.

TECHNICAL ASSISTANCE

If you have any queries regarding the installation or use of this product please contact Wheely-Safe directly:

info@wheely-safe.co.uk

IMPORTANT INFORMATION

It is imperative that all staff/personnel be aware that even with the Wheely-Safe system fitted, normal tyre and wheel inspection, removal, maintenance and walkaround procedures/policies must still be adhered to.

No liability can be offered by Wheely-Safe Ltd for any loss or damages incurred as a result of the devices being fitted.

For further technical information, please refer to the product's technical specification.

PRODUCT DISCLAIMER

The Wheely-Safe system is designed as a driver assistance device and should not be used as a substitute for regular manual wheel and tyre safety checks.

- Neither the seller, nor the manufacturer, will be liable for any loss, damage or injury, directly or indirectly arising from the use or inability to determine the use of this product.
- Before fitting, the user shall determine the suitability of the product for its intended use, and the user shall assume all responsibility and risk in connection herewith.
- The driver/operator is always responsible for the condition of the wheels/tyres on their vehicle and regular pre-use visual checks are essential to stay wheel and tyre safe.
- All tyres/wheels, including pressures, should be checked before any journey, when tyres are in their cold state, using an accurate tyre pressure gauge.
- When checking pressures, it is recommended all tyres receive a thorough inspection, checking tread depths and looking for any tyre damage or uneven wear. Wheel nuts, studs and rims should also be checked to ensure they are damage free and in a suitable condition prior to commencing the journey.

Published product details, specifications and suitability information is the best available at the time of publication. Wheely-Safe Ltd shall not be held responsible for the accuracy of any advice given regarding the suitability (or otherwise) of any part(s).

WARRANTY

All Wheely-Safe products are covered by a comprehensive 12-month warranty, beginning from the date of purchase.

We encourage you to ensure that all parts are fitted by a competent person in accordance with manufacturer specifications. Wheely-Safe Ltd cannot be held liable for any damage caused by the fitting of a Wheely-Safe component.

Please ensure that you have read your warranty conditions before attempting to install the Wheely-Safe system, or repair an item on your vehicle. Wheely-Safe Ltd cannot be held responsible if an item is damaged or your warranty is voided. Please be aware that some manufacturer guarantees may be on the condition that you use a qualified technician for the installation of any ancillary equipment.

