



PRESSURE AND BRAKE TEMPERATURE CHECKER PC

OPERATING INSTRUCTIONS



Use of the Pressure and Brake Temperature Checker (PC):



1. Switching on the PC:

- Insert 2 x AAA batteries into the back of the PC.
- Press and hold the power button for two seconds; the LCD screen will switch on and the power button will illuminate.

2. Changing the pressure setting:

- Pressures will automatically default to PSI (UK/USA).
- To switch from PSI to Bar, or vice versa, rapidly press the power button five times.

3. Reading a TPMS sensor:

- When on, place the Wheely-Safe logo on the PC over the TPMS sensor.
- The device will 'bleep' and the LCD screen will display the pressure reading for that tyre, along with the current battery level for the TPMS sensor.



4. Types of TPMS sensor reading:

- Pressure displayed on the LCD screen with one 'bleep' – tyre pressure is OK.
- Pressure flashes on the LCD screen every one second for eight seconds with one 'bleep' – early low pressure advisory (indicating underinflation of between -15% to -25%).
- Pressure flashes on the LCD screen every one second for eight seconds with nine 'beeps' – critical low pressure warning (at least -25% underinflation).

5. Reading a wheel loss sensor (where fitted):

- When on, place the Wheely-Safe logo on the PC over the wheel loss sensor.
- The device will 'bleep' and the LCD screen will display the highest temperature recorded from the wheel in the last 24 hours, along with the current battery level for the wheel loss sensor.



6. Types of wheel loss sensor reading (where applicable):

- Temperature displayed on the LCD screen with one 'bleep' – rim temperature OK (i.e. the highest recorded temperature in the last 24 hours is below 100°C).
- Temperature flashes on the LCD screen every one second for eight seconds with nine 'beeps' – critical high temperature (i.e. the highest recorded temperature in the last 24 hours is 100°C or above).

7. Switching off the PC:

- Press and hold the power button for two seconds; the LCD screen will switch off.
- If the PC has not read a sensor/switched on equipment for 60 seconds, it will automatically switch off.

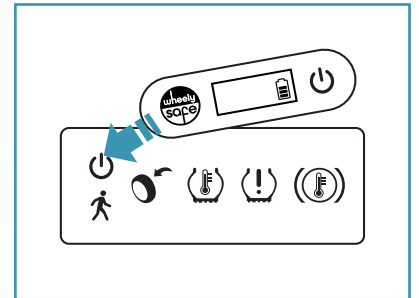
Switching on Solar Receivers (RS):



1.

Switching on the RS:

- Switch on the Pressure and Brake Temperature Checker (PC).
- Place the Wheely-Safe logo on the PC over the power icon on the RS for 20 seconds.
- After 20 seconds all alert icons on the solar receiver will flash RED 3 times and bleep 3 times.
- The power icon will now illuminate every 20 seconds to confirm the solar receiver is powered "on".



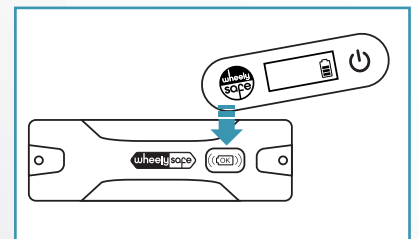
Switching on Battery Boosters (BB):



1.

Switching on the BB:

- Switch on the Pressure and Brake Temperature Checker (PC).
- Place the Wheely-Safe logo on the PC over the BB dock recess for 20 seconds.
- When the BB switches on, PC will bleep once and show "ON" on the screen.



Checking battery levels:

1.

When switched on, the Pressure and Brake Temperature Checker (PC) will show a battery level icon in the bottom right corner of the LCD screen. This relates to:

- When first switched on – battery level of the PC.
- When checking a TPMS sensor – battery level of the TPMS sensor.
- When checking a wheel loss sensor – battery level of the wheel loss sensor.
- After switching on the Battery Booster BB – the battery level as a % of the BB.

TECHNICAL ASSISTANCE

If you have any queries regarding the installation or use of this product please contact Wheely-Safe directly:

info@wheely-safe.co.uk

IMPORTANT INFORMATION

It is imperative that all staff/personnel be aware that even with the Wheely-Safe system fitted, normal tyre and wheel inspection, removal, maintenance and walkaround procedures/policies must still be adhered to.

No liability can be offered by Wheely-Safe Ltd for any loss or damages incurred as a result of the devices being fitted.

For further technical information, please refer to the product's technical specification.

WARRANTY

All Wheely-Safe products are covered by a comprehensive 12-month warranty, beginning from the date of purchase.

We encourage you to ensure that all parts are fitted by a competent person in accordance with manufacturer specifications. Wheely-Safe Ltd cannot be held liable for any damage caused by the fitting of a Wheely-Safe component.

Please ensure that you have read your warranty conditions before attempting to install the Wheely-Safe system, or repair an item on your vehicle. Wheely-Safe Ltd cannot be held responsible if an item is damaged or your warranty is voided. Please be aware that some manufacturer guarantees may be on the condition that you use a qualified technician for the installation of any ancillary equipment.

PRODUCT DISCLAIMER

The Wheely-Safe system is designed as a driver assistance device and should not be used as a substitute for regular manual wheel and tyre safety checks.

- Neither the seller, nor the manufacturer, will be liable for any loss, damage or injury, directly or indirectly arising from the use or inability to determine the use of this product.
- Before fitting, the user shall determine the suitability of the product for its intended use, and the user shall assume all responsibility and risk in connection herewith.
- The driver/operator is always responsible for the condition of the wheels/tyres on their vehicle and regular pre-use visual checks are essential to stay wheel and tyre safe.
- All tyres/wheels, including pressures, should be checked before any journey, when tyres are in their cold state, using an accurate tyre pressure gauge.
- When checking pressures, it is recommended all tyres receive a thorough inspection, checking tread depths and looking for any tyre damage or uneven wear. Wheel nuts, studs and rims should also be checked to ensure they are damage free and in a suitable condition prior to commencing the journey.

Published product details, specifications and suitability information is the best available at the time of publication. Wheely-Safe Ltd shall not be held responsible for the accuracy of any advice given regarding the suitability (or otherwise) of any part(s).

