



WHEEL LOSS SENSORS AND BRACKETS WL AND WLM FITTING INSTRUCTIONS



STEP-BY-STEP FITTING GUIDE

Preparing and planning to fit the wheel loss sensors and brackets:

1. You must fit a minimum of two wheel loss sensors and two brackets on each outer wheel for balance.

PLEASE NOTE: If the wheel fixing has a conical or spherical stud fixing, they are not compatible with the system and you should not progress with installation.

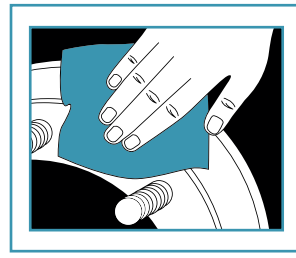
2. The wheel you are working on must be jacked up, following the manufacturer's guidelines for your vehicle, and in preparation for its safe removal.

3. Remove all wheel nuts and then safely remove the wheel from the vehicle. **IMPORTANT:** Failure to release the clamping force of **ALL** wheel nuts and only releasing the clamping force of the nuts required to fit the brackets could result in a torque imbalance. Any torque imbalance has the potential to cause the nuts to come loose from the wheel in a very short journey time.

4. Clean the mating faces of all wheels to hubs and all wheels on twin axles.

Clean the mating faces of the wheel and bracket location.

They should be totally clean and free from dirt, paint, rust and grease, prior to fitment.

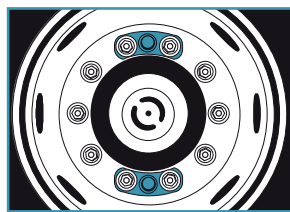


5. Place the wheel back onto the hub.

6. Take the brackets and place them on a flat surface. You should be able to see that the ends of the brackets bend upwards slightly - this ensures the wheel loss sensor gets the required compression when mounted to the wheel. If the bracket sits flush to the flat surface along its entire length, please contact Wheely-Safe for technical assistance.

7. Place the wheel loss sensor into the bracket. When fitted, the top of the sensor (showing the Wheely-Safe logo) will protrude slightly above the bracket. Repeat this for the second bracket & sensor.

8. Position the sensors and brackets diagonally opposite each other – fitting two sets per outer wheel.



9. When fitting and tightening the wheel nuts, and in its clamped position, an in-built LED within the sensor will flash three times for two seconds. This indicates that the sensor is activated.

10. Once all wheel nuts have been correctly torqued, please complete this final step to ensure the sensor is seated correctly in the bracket. There should be no more than a 0.15mm gap between the wheel loss sensor and the fitment surface. If there is, then the sensor is not seated correctly. Please remove the wheel nuts and repeat the final three steps.

PLEASE NOTE: When tightening the wheel nuts, refer to a recognised industry standard wheel security and best practice guide for nut tightening sequences. Then, follow your own proven wheel security procedure.

PLEASE NOTE: On completion of fitting the brackets and sensors, the wheel nuts on all wheels that are changed/disturbed must be rechecked for tightness before entering service. Use a calibrated torque wrench to check wheel nut tightness to manufacturer guidelines. Then, your own company wheel removal, maintenance and walkaround procedure/policy must be adopted for ongoing checks thereafter.

CARE AND MAINTENANCE

- 1.** If the wheel requires removal, take the opportunity to inspect the condition of the bracket and clean. Please note that excessive wheel nut torque may distort the bracket. Ensure brackets are fit for purpose when re-fitting. Should there be a build-up of debris behind the bracket, please remove and clean.
- 2.** Upon removal, please place the bracket on a flat surface. As prior to first fitment, you should be able to see that the ends of the brackets bend upwards slightly. Check to ensure that there is no evidence of warping/distortion or damage.
- 3.** Ensure the alloy face of the wheel rim is clean and free from dirt, rust, water and debris.
- 4.** Ensure the mating face of the bracket and sensor is also clean and free from dirt, rust, water and debris.
- 5.** Once this maintenance has been completed, please follow the original fitment instructions.

TECHNICAL ASSISTANCE

If you have any queries regarding the installation or use of this product please contact Wheely-Safe directly:

info@wheely-safe.co.uk

IMPORTANT INFORMATION

It is imperative that all staff/personnel be aware that even with the Wheely-Safe system fitted, normal tyre and wheel inspection, removal, maintenance and walkaround procedures/policies must still be adhered to.

No liability can be offered by Wheely-Safe Ltd for any loss or damages incurred as a result of the devices being fitted.

For further technical information, please refer to the product's technical specification.

PRODUCT DISCLAIMER

The Wheely-Safe system is designed as a driver assistance device and should not be used as a substitute for regular manual wheel and tyre safety checks.

- Neither the seller, nor the manufacturer, will be liable for any loss, damage or injury, directly or indirectly arising from the use or inability to determine the use of this product.
- Before fitting, the user shall determine the suitability of the product for its intended use, and the user shall assume all responsibility and risk in connection herewith.
- The driver/operator is always responsible for the condition of the wheels/tyres on their vehicle and regular pre-use visual checks are essential to stay wheel and tyre safe.
- All tyres/wheels, including pressures, should be checked before any journey, when tyres are in their cold state, using an accurate tyre pressure gauge.
- When checking pressures, it is recommended all tyres receive a thorough inspection, checking tread depths and looking for any tyre damage or uneven wear. Wheel nuts, studs and rims should also be checked to ensure they are damage free and in a suitable condition prior to commencing the journey.

Published product details, specifications and suitability information is the best available at the time of publication. Wheely-Safe Ltd shall not be held responsible for the accuracy of any advice given regarding the suitability (or otherwise) of any part(s).

WARRANTY

All Wheely-Safe products are covered by a comprehensive 12-month warranty, beginning from the date of purchase.

We encourage you to ensure that all parts are fitted by a competent person in accordance with manufacturer specifications. Wheely-Safe Ltd cannot be held liable for any damage caused by the fitting of a Wheely-Safe component.

Please ensure that you have read your warranty conditions before attempting to install the Wheely-Safe system, or repair an item on your vehicle. Wheely-Safe Ltd cannot be held responsible if an item is damaged or your warranty is voided. Please be aware that some manufacturer guarantees may be on the condition that you use a qualified technician for the installation of any ancillary equipment.

