



# 2018 California Renewable Energy RFP

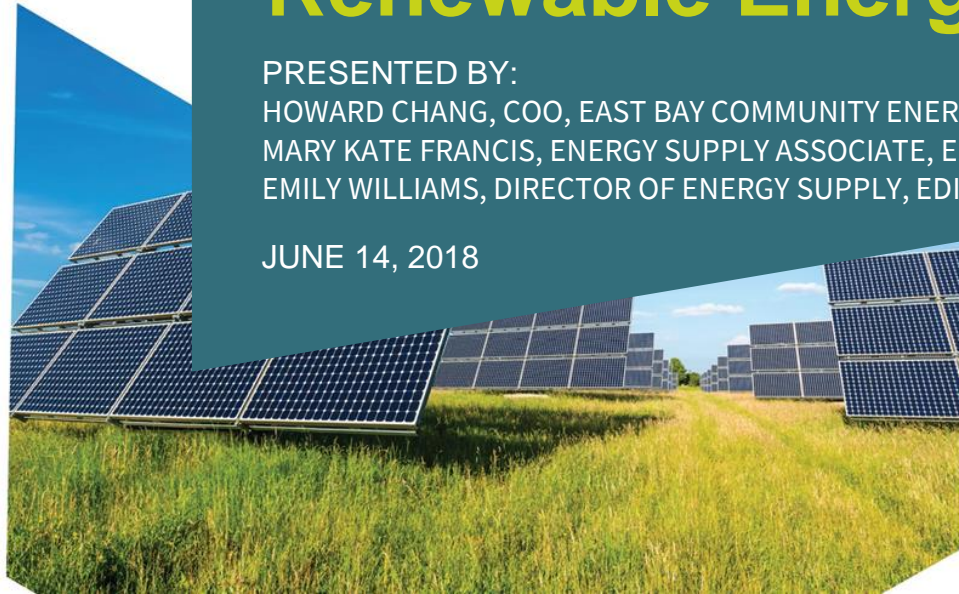
PRESENTED BY:

HOWARD CHANG, COO, EAST BAY COMMUNITY ENERGY

MARY KATE FRANCIS, ENERGY SUPPLY ASSOCIATE, EDISON ENERGY

EMILY WILLIAMS, DIRECTOR OF ENERGY SUPPLY, EDISON ENERGY

JUNE 14, 2018



# Agenda

---

- Introduction to East Bay Community Energy
- Overview of 2018 California Renewable Energy RFP
- RFP Timeline
- Questions & Answers

*Throughout the presentation, viewers can use the “Questions” section of the GoToWebinar panel on the right hand side of their screen to submit questions to East Bay Community Energy*

# WHO IS EBCE?

---

- East Bay Community Energy (EBCE) is a community choice energy service provider enabled by CA State Law
- EBCE was formed as a Joint Powers Authority in December 2016 and is governed by a Board of Directors composed of representatives from 11 participating cities and the unincorporated areas in Alameda County.
- Current members of EBCE include:

City of Albany	City of Livermore
City of Berkeley	City of Oakland
City of Dublin	City of Piedmont
City of Emeryville	City of San Leandro
City of Fremont	City of Union City
City of Hayward	County of Alameda
- EBCE is committed to providing Alameda County with cleaner, greener electricity at lower rates. EBCE will reinvest earnings back into the community to create local green energy jobs, local energy programs, and clean power projects.

# EBCE SERVICE ENROLLMENT



- In accordance with CA legislation, EBCE is an “opt-out” service, which means that EBCE becomes the default electricity provider. PG&E continues to deliver the electricity, maintains the lines, and handles customer billing.
- Businesses in Alameda County not already served under Direct Access began enrollment in June and Residential customers will begin enrollment in November.
- At full implementation, EBCE will serve close to 600,000 accounts, representing over 1.5 million Residents and expects to be the largest CCA in active service by the end of 2018 with nearly 6TWh of annual load.
- Historical opt-out rates across CCAs have been in single digit %'s.

# CREDIT PROFILE

---

- EBCE is an independent public agency formed as a Joint Powers Authority, which is governed by its 12 participating members.
- EBCE's financial standing is independent of the participating members and its revenues are not part of the county general funds.
- The County of Alameda has provided initial start-up funds to help EBCE launch its operations. EBCE has additionally closed on a \$50MM unsecured credit facility with Barclays Banks in March 2018.
- EBCE is currently seeking board approval to implement a formal financial reserve policy, which is in line with MCE's recent investment grade credit rating issued by Moody's.
- The standard conforming bid will not include any form of credit support by EBCE.
- EBCE does welcome bid variations, which provide an opportunity for developers to present alternative credit structures and proposals for consideration. EBCE will not consider any form of a parent level guarantee provided by the County or City members.

# RFP OBJECTIVE

---

- EBCE's goal is to purchase electricity and attributes from eligible PCC1 resources through this RFP starting as early as 2019 to:
  - Support long-term low and stable operating costs; and
  - Increase the renewable energy content of its wholesale electricity portfolio.
- Through the RFP process, EBCE intends to identify and enter into **one or more long-term PPAs** with renewable energy generation facilities. In total, EBCE seeks **up to 1,000,000 MWh/year**.

# RFP COMPONENTS

---

- Notice of Intent (Exhibit A)
- RFP Participation Agreement (Exhibit B)
- Proposal Offer Form (Exhibit C)
- Term Sheet (Exhibit D)

# BASE PRODUCT

---

1. **Delivered Energy:** Buyer's Output Share of the as-available electric energy generated by the Facility, delivered to the Delivery Point, as measured by CAISO-approved meters, pursuant to the Scheduling Requirements;
2. **Environmental Attributes:** All renewable energy credits ("RECs") and any other environmental attributes associated with Delivered Energy;
3. **Capacity Rights:** Buyer's Output Share of all capacity rights, including resource adequacy benefits, if any, associated with the Facility; and
4. **Ancillary Services:** All ancillary services, products and other attributes, if any, associated with the Buyer's Output Share of the Facility.



# ENERGY STORAGE

---

- Bidders are strongly encouraged to provide renewable energy + storage bids in addition to their renewable energy offers
- Storage offers should include the energy, RA, and ancillary services attributes described in the base product on Slide 8.
- **CORRECTION FROM INITIAL RFP LANGUAGE:**
  - **Capacity: 20% of the renewable energy project's contracted capacity (MWac) / 4hr duration**

# PROJECT LOCATION

---

- Standard conforming bid requires that the project is in California and delivered to the CAISO grid. Non-conforming bids will be considered
- Alameda County: Minimum three (3) MWac of installed capacity
- Outside of Alameda County: Minimum ten (10) MWac of installed capacity
- EBCE intends to secure no less than 20 MWac within Alameda County

# SETTLEMENT

---

- Day-Ahead Market
- Two required settlement locations:
  - Project Point of Delivery (Pnode)
  - Default Load Aggregation Point or Hub
    - Strong preference: PG&E DLAP
    - SDG&E DLAP
    - SCE DLAP
    - NP-15
    - SP-15
    - ZP-26

# START DATE & TERM LENGTH

---

- Start Date: January 2019 – December 2022
  - Bid variations may include multiple start dates. Bidders are encouraged to optimize offers for pricing
- Delivery Term: 10 – 25 years
  - Standard conforming bids are 20 years

# PRICE

---

- Standard conforming bids must include the following price points:
  - Flat (0% escalator)
  - Escalating at 2%
- Bid variations may include additional escalation or de-escalation rates

# LOCAL WORKFORCE

---

- Strongly preferred: Proposals that include project development or maintenance activities that are completed by or utilize labor and other workforce resources sourced from Alameda County
- Throughout California, EBCE seeks proposals that are in line with these four goals and priorities:
  1. Utilizing a stable and skilled workforce
  2. Contributing to local workforce development
  3. Creating opportunities for disadvantaged workers
  4. Supporting union jobs

# SELLER SECURITY: PRE-COD

---

Bidders shall be required to post security as follows:

- Development Security – As Available
  - \$60,000 per MW of Buyer's Contract Capacity for the period between PPA Effective Date and COD
- Development Security – Dispatchable - includes As Available systems plus storage
  - \$90,000 per MW of Buyer's Contract Capacity for the period between PPA Effective Date and COD

# SELLER SECURITY: POST-COD

---

Bidders shall be required to post security as follows:

- Delivery Term Security – As Available
  - \$75,000 per MW of Buyer’s Contract Capacity for the period following COD
- Delivery Term Security – Dispatchable - includes As Available systems plus storage
  - \$105,000 per MW of Buyer’s Contract Capacity for the period following COD



# EXHIBIT C: PROPOSAL OFFER FORM

---

- Developer Background
- Bids
  - Six projects (more can be added)
  - Each project has 4 columns for the standard conforming bids, and 6 additional columns for bid variations. If only providing non-conforming bids, skip the first 4 columns and enter data in the 'offer variation' columns only
- Project Development Status
- Project Generation
  - Create copies of this tab as needed
- Energy Storage
  - Create copies of this tab as needed

# RFP Timeline

---

<b>Event</b>	<b>Target Date</b>
Issuance of RFP	Monday, June 4, 2018
Deadline to submit questions for webinar	Tuesday, June 12, 2018 at 1:00 PM PT
Bidder webinar	Thursday, June 14, 2018 at 11:00 AM PT
Deadline to submit Notice of Intent to Bid Form	Friday, June 15, 2018 at 1:00 PM PT
Responses to webinar questions provided	Monday, June 18, 2018
Final deadline to submit emailed questions	Friday June 22, 2018 at 1:00 PM PT
Responses to additional questions provided	Tuesday, June 26, 2018
Proposals Due to EBCE and Edison Energy	Friday, June 29, 2018 at 1:00 PM PT
Notification of final shortlisted Bidders (Tentative)	September 2018
PPA negotiations	September-November, 2018
Final contract approval	December 2018
Execution of PPA	December 2018

# Next Steps

---

- Submit Notice of Intent (Exhibit A) to [eegrenewablerfp@edisonenergy.com](mailto:eegrenewablerfp@edisonenergy.com) by June 15 @ 1pm PT
- Submit final questions to the same inbox by June 22 @ 1pm ET
- Submit proposals by June 29 @ 1pm PT
  - RFP Participation Agreement (Exhibit B)
  - Proposal Offer Form (Excel Template attached as Exhibit C)
  - Redlined Term Sheet(s) clearly stating which revisions apply to which offer variations (Exhibit D)

# Questions & Answers

---

- Please use the “Questions” section of the GoToWebinar panel on the right hand side of your screen to submit questions to East Bay Community Energy

# THANK YOU!

FOR MORE INFORMATION



[EBCE.org](http://EBCE.org)



[/EastBayCommunityEnergy](https://www.facebook.com/EastBayCommunityEnergy)



[@PoweredbyEBCE](https://twitter.com/PoweredbyEBCE)



[info@ebce.org](mailto:info@ebce.org)



833.699.EBCE (3223)