

The **EAST BAY** is now powered by

# GREENER LOW COST LOCAL ENERGY

East Bay Community Energy is your local public power agency, providing greener power, offering lower rates than PG&E, and supporting local community programs.

**\$10M**

customer savings in 2020 compared to PG&E rates

## Lower Rates

We offer greener energy at lower rates for residents and businesses.

**2x**

more renewable energy in EBCE's power mix than PG&E's in 2019 (most recent data)

## Sustainability

As an EBCE customer, you are helping transition the East Bay's energy supply to more solar and wind energy.

**\$2M**

provided to community groups for COVID-19 relief in 2020

## Community Grants

We invest our net revenues back into local programs and East Bay non-profits.

**\$5.1M**

for 2019-2020 local programs


## Local Programs


EBCE's Local Development Business Plan invests in local renewable energy infrastructure.

## Contact Us

 @PoweredbyEBCE

 @PoweredbyEBCE

 PoweredbyEBCE

 customer-support@ebce.org

 1-833-699-EBCE (3223)

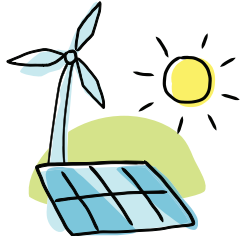


Español  
[ebce.org/es](https://ebce.org/es)

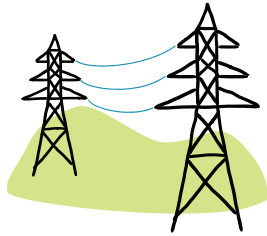
中文  
[ebce.org/cn](https://ebce.org/cn)



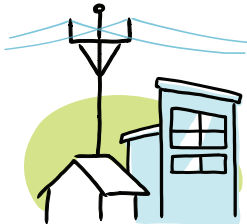
## How It Works



**We source clean energy** through existing and new projects. As of 2020 EBCE has contracted for 550 megawatts (MW) of new wind and solar power and 150 MW of new battery storage.



**PG&E maintains the power grid** to deliver energy to our community, manages outages, and handles billing.



**You benefit** from greener energy, low rates, more energy options, additional energy programs, and local control of your energy provider.

This type of program, called **Community Choice Energy (CCE)**, is already working around the Bay Area and has been growing in popularity around California to help reduce energy bills and meet California's energy goals.

EBCE is locally controlled, with a Board of Directors comprised of an elected official from each city we serve, who meet publicly each month.



Community Innovation Grand Recipient: RE-volv installing solar panels at LaPeña, Berkeley.

## Our Programs

EBCE procures clean, low-cost energy for over 630,000 accounts in Alameda County and the City of Tracy serving a population of over 1.5 million. Then we reinvest into the community to deliver social, economic, and environmental benefits to all of our customers.

**Go Solar** EBCE provides an additional incentive to low-income and municipal customers that install solar.

**Discover Induction Cooking** Each city that EBCE serves offers an induction cooktop loan program, so you can try before you buy!

**Hot Water, Low Energy Bill** EBCE has partnered with the Bay Area Regional Energy Network (BayREN), Stopwaste, and several local energy providers throughout the Bay Area to save you up to \$2,000 on the purchase and installation of a heat pump water heater.

New programs will launch soon that will provide electric vehicle charging and solar + battery storage system incentives.

## Investing in Community

Three times per year, EBCE reviews applications for local sponsorships. We have funded dozens of local groups that make the East Bay a vibrant community.

[ebce.org/communitysponsorships](https://ebce.org/communitysponsorships)



Sponsorship recipient: Piedmont Makers Robotics



Sponsorship recipient: Ashland Little League

## Go 100% Renewable

Customers are automatically enrolled in the plan selected by their city council. You may OPT UP to 100% clean energy, or OPT DOWN to a lower cost plan, or opt out and return to bundled PG&E service, by visiting [ebce.org](https://ebce.org)

### Your service plan options

**Renewable 100** Get 100% renewable California solar & wind power at slightly higher rates.

**Brilliant 100** Our affordable carbon-free plan, which is a mix of eligible renewable and large hydropower sources at similar rates as PG&E.

**Bright Choice** Our basic plan, which includes more renewable energy than PG&E at slightly lower rates.

[www.ebce.org](https://www.ebce.org)