

BUSINESS TOOLKIT

# Welcome to East Bay Community Energy

Clean Energy • Low Rates • Community Benefits



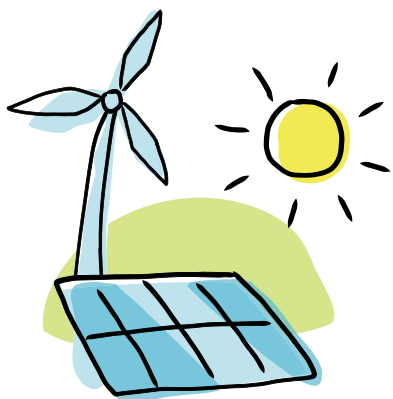
# East Bay Community Energy (EBCE) generates and buys clean electricity at low rates for our customers.

Before EBCE, PG&E was responsible for your electricity generation. Now, EBCE handles your generation (replacing the PG&E generation charge) while PG&E continues to deliver that energy and send you the bill.

As an EBCE customer, there are three key benefits you may take advantage of:

## 1. Cost Savings

East Bay Community Energy provides clean energy at low rates. Our Bright Choice option is priced at 1% below PG&E's generation rate. Since serving our first customers in June of 2018, we have maintained a rate that is below PG&E's. In 2020, EBCE customers saved over \$10 million.

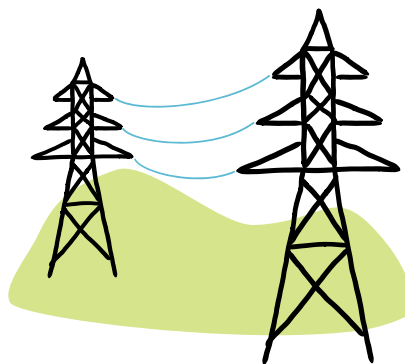


EBCE buys clean electricity

## 2. Energy Choice and Access

As a not-for-profit public agency, EBCE is accountable to its community and customers, not shareholders. Governed by local elected officials, with decisions and policies made at public meetings, you are now able and encouraged to have your voice heard.

Whether it's the type of energy we are buying, the cost to the customer, energy options offered, program development, and everything in between, our community is helping make those choices. Welcome to the table.

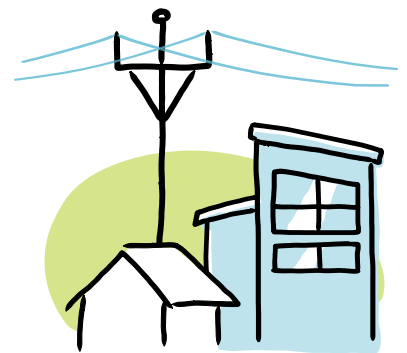


PG&E delivers the electricity

## 3. Additional Programs

EBCE is powering the transition to a cleaner tomorrow and can help you save money while reducing emissions. EBCE business customers are transitioning from gas to electric vehicles, shifting energy use to when it is cleanest and cheapest, and reducing use through efficiency measures.

While these are often wise investments on their own, EBCE is here to sweeten the deal. In addition to programs offered by PG&E, EBCE customers can take advantage of our added incentives. For current offerings, check out [ebce.org](http://ebce.org).



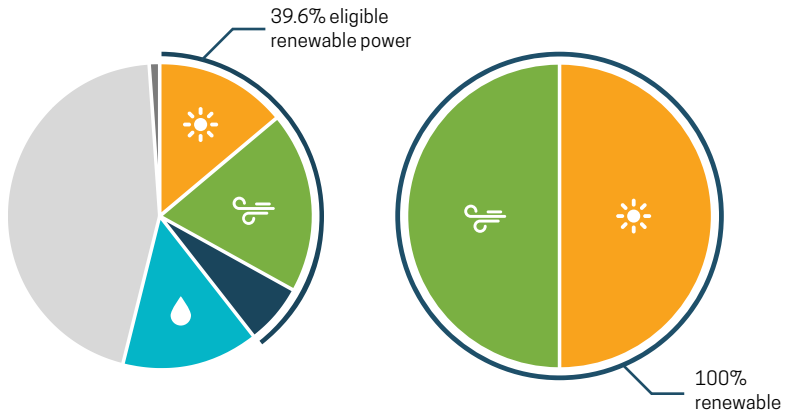
You get the electricity and all the benefits



# Your Energy Options

As an EBCE customer, you get to choose your energy product and change your service option at any time. Visit [ebce.org](http://ebce.org) or call 833-699-EBCE (3223) to review and choose from available products. Additionally, you have the option to opt out and return to PG&E's generation service.

If you are interested in powering your business with 100% renewable energy, let us know! EBCE is happy to provide an estimate of the additional cost of Renewable 100 for your business. Please email Kelly Birdwell Brezovec, Account Services Analyst, at [kbrezovec@ebce.org](mailto:kbrezovec@ebce.org) for more information.



## 2020 BRIGHT CHOICE POWER CONTENT

Our basic service, which is designed to include about 5% more renewable energy than PG&E's standard mix at a 1% discount to PG&E's rate. Default enrollment for most customers.

Additional details available at [ebce.org/our-power-mix](http://ebce.org/our-power-mix).

## 2020 RENEWABLE 100 POWER CONTENT

100% renewable CA solar and wind power at slightly higher rates. (\$.01/kWh more than PG&E's standard rate).

### ELIGIBLE RENEWABLE:

- Solar
- Wind
- Hydro
- Other or Unspecified
- Biomass & Biowaste, Geothermal, Eligible Hydroelectric
- Nuclear

# Energy Sourcing

EBCE's goal is to buy power from renewable energy facilities in California and we are already on our way.

In 2020, EBCE brought two new projects online to service our customers, including the Scott Haggerty Wind Energy Center in Livermore and the Rosamond Solar Project in Kern County. These contracts add renewable energy to California's grid and lower costs for our customers.

**9** PROJECTS CONTRACTED

**550+** MEGAWATTS OF WIND AND SOLAR

**150+** MEGAWATTS OF BATTERY STORAGE

# Billing and Energy Rate Schedules

EBCE works in collaboration with PG&E to ensure a smooth customer experience. EBCE customers still receive just one bill from PG&E as they did before, with PG&E's generation charges replaced by EBCE's. More information on the updated bill presentation can be found at [ebce.org/understand-your-bill](http://ebce.org/understand-your-bill).

Additionally, EBCE's rate schedules mirror PG&E's so that you may continue to shift your energy use to off-peak hours and maximize savings. In March 2021, businesses were switched to the new Time of Use rate periods (B rates). The chart to the right illustrates these new time periods. Check out EBCE's additional resources on rate schedules in order to make the best financial decision for your business, using energy when it is cleanest and cheapest. More info at [ebce.org/rates](http://ebce.org/rates).

## NEW BUSINESS TIME OF USE RATE PERIODS (B-RATES)

- **Peak** Highest energy cost
- **Partial-Peak** Medium energy cost
- **Off-Peak** Lower energy cost
- **Super Off-Peak** Lowest energy cost



12AM 2 4 6 8 10 12PM 2 4 6 8 10 12AM

# Who We Serve

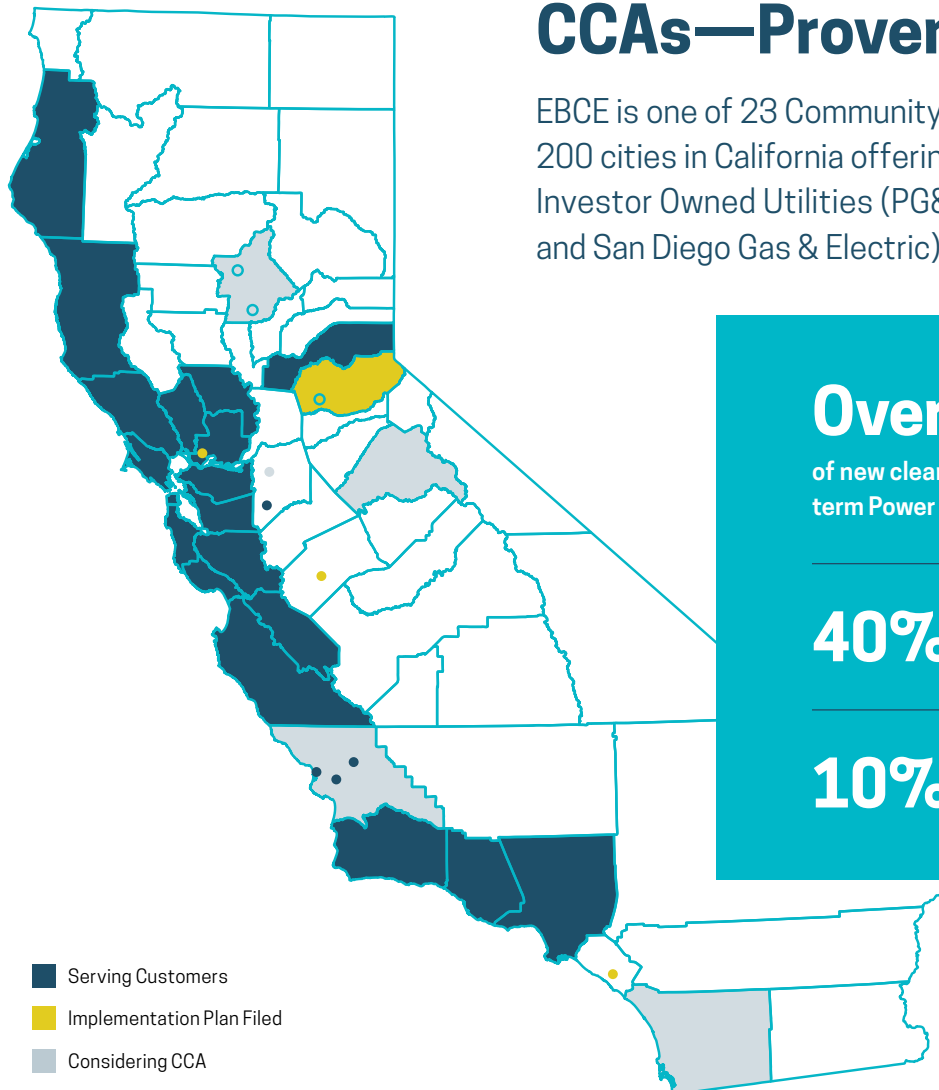
All of eligible Alameda County, plus the City of Tracy, have selected EBCE as their default electricity generation provider. (The City of Alameda does not participate in EBCE, as they are served by a municipal utility.)

EBCE serves a population of over 1.5 million with an electric load over 5,800,000 Megawatt-hours per year.



# CCAs—Proven Across California

EBCE is one of 23 Community Choice Agencies serving over 200 cities in California offering an alternative to the applicable Investor Owned Utilities (PG&E, Southern California Edison, and San Diego Gas & Electric)



**Over 6,000 Megawatts**

of new clean generation capacity contracted through long-term Power Purchase Agreements by CCAs across California

**40%** In 2019, CCA's served over 40% of load in PG&E's service area

**10%** In 2019, EBCE served about 10% of load in PG&E's service area



Habitat for Humanity is honored to partner with East Bay Community Energy. From their support of affordable housing to promoting women in leadership, EBCE cares about the communities and people they serve.”

—Habitat for Humanity East Bay/Silicon Valley



We're thrilled to use renewable energy from EBCE to power our family owned restaurant! EBCE allows us to lower our carbon footprint while increasing our sense of community through community choice aggregation, and creative promotional campaigns that propel our brand forward.”

—Joel DiGiorgio, Arthur Mac's Tap & Snack



During this time of uncertainty, East Bay Community Energy has been a champion for the vulnerable patients and families that need us most.”

—UCSF Benioff Children's Hospitals



EBCE, the City of Fremont, and many others are working together to create a healthy, safe, and vibrant future for our community. Reach out to EBCE to hear about what is in the works and to make sure your business goals are aligned with your energy choices.”

—Rachel DiFranco, Sustainability Manager, City of Fremont



## Next Steps

Now that you better understand EBCE and how our service affects your business, take some action!

- ✓ **Check out the programs EBCE has to offer.** Could you be reducing costs and helping the planet in the process? → [ebce.org](https://ebce.org)
- ✓ **Do you have questions about EBCE?** See answers to our Frequently Asked Questions. → [ebce.org/faq](https://ebce.org/faq)
- ✓ **Understand Your Energy Bill.** Learn how to calculate your energy savings from your energy bill. → [ebce.org/understand-your-bill](https://ebce.org/understand-your-bill)
- ✓ **Want to change your default plan?** Make changes online. → [ebce.org/change-my-plan](https://ebce.org/change-my-plan)

**For detailed usage requests, please contact:**

Kelly Birdwell Brezovec  
Account Services Analyst  
[kbrezovec@ebce.org](mailto:kbrezovec@ebce.org)

**Get the latest in your inbox:**

Sign up for categorized email updates towards the bottom of our homepage at [ebce.org](https://ebce.org).



**Contact us**  
1-833-699-EBCE (3223)  
[customer-support@ebce.org](mailto:customer-support@ebce.org)

**Visit and follow us**  
[ebce.org](https://ebce.org)  
@PoweredbyEBCE

**Languages**   
Español [ebce.org/es](https://ebce.org/es)  
中文 [ebce.org/cn](https://ebce.org/cn)