

East Bay Community Energy is your local public power agency, providing green power, offering lower rates than PG&E, and supporting local community programs.

\$19M

projected savings in 2022-2023 fiscal year

Lower rates

We offer green energy at lower rates for residents and businesses.

100%

renewable energy made up of 100% California solar and wind power

Sustainability

As an EBCE customer, you are helping transition the East Bay's energy supply to more solar and wind energy.

\$4.7M

committed over the next 3 years to community innovation grants

Community grants

We invest our net revenues back into local programs and East Bay non-profits.

\$21M

for 2022-2023 local programs




Local programs

EBCE's Local Development Business Plan invests in local renewable energy infrastructure.

CONTACT US 

1-833-699-EBCE (3223)
customer-support@ebce.org

VISIT AND FOLLOW US 

ebce.org
@PoweredbyEBCE   

LANGUAGES 

Español ebce.org/es
中文 ebce.org/cn

The **EAST BAY** is powered by

**GREEN
LOW COST
LOCAL
ENERGY**



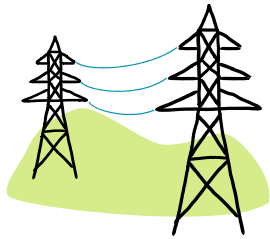
EBCE's Scott Haggerty Wind Energy Center in Livermore



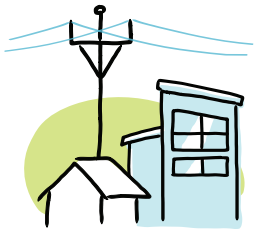
How it works



We source clean energy through existing and new projects. As of 2021, EBCE has contracted for 700 megawatts (MW) of new wind and solar power and 270 MW of new battery storage.



PG&E maintains the power grid to deliver energy to our community, manages outages, and handles billing.



You benefit from green energy, low rates, more energy options, additional energy programs, and local control of your energy provider.

This type of program, called **Community Choice Energy (CCE)**, is already working around the Bay Area and has been growing in popularity around California to help reduce energy bills and meet California's energy goals.

EBCE is locally controlled, with a Board of Directors comprised of an elected official from each city we serve, who meet publicly each month.



EBCE Community Innovation Grand Recipient: RE-volv installing solar panels at La Peña, Berkeley

Community investing

Three times per year, EBCE reviews applications for local sponsorships. We have funded dozens of local groups that make the East Bay a vibrant community. Learn more at ebce.org/community-sponsorships.



Sponsorship recipient: Piedmont Makers Robotics



Sponsorship recipient: Ashland Little League

Our programs

At East Bay Community Energy, one aspect of our mission is to reinvest profits directly into our community to deliver social, economic, and environmental benefits to all of our customers.

Resilient Home Power your home with energy from the sun during the day and store excess energy in a rechargeable battery for when you need it. The Resilient Home program reduces the cost and complexity of installing solar + battery. Apply today for a free quote and pre-negotiated pricing at ebce.org/resilient-home.

Cooking with Induction Induction cooks food faster than traditional stoves and is just as powerful. The difference is in the technology. See for yourself! East Bay residents can borrow and “test drive” an induction cooktop—FOR FREE! Reserve your Induction Lending Tool Kit today. Go to ebce.org/induction-cooking for details.

Got Hot Water? Considering investing in a heat pump water heater—view and manage energy usage, adjust water temperature, and change the operation mode remotely. You'll never have to relight the pilot on your water heater again! Apply now for up to \$2,000 in incentives. Learn more at ebce.org/hotwater.

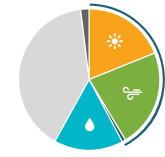
Go 100% renewable

Customers are automatically enrolled in the plan selected by their city council. You may choose 100% clean energy, choose a lower cost plan, or return to bundled PG&E service by visiting ebce.org/change-my-plan.

Your EBCE service plan options:



Renewable 100
100% renewable California solar and wind power at 3/4 cents per kwh above standard PG&E rates



Bright Choice
Our basic plan, priced 3% lower than PG&E standard generation rate

