

Kent Agerlund

kea@Coretech.dk

Chief System Management Architect
Coretech Denmark



@Agerlund



Compliance Settings – the new orange in Enterprise Client Management





Chuck Norris

2012
rentals
contract

What is Compliance Settings

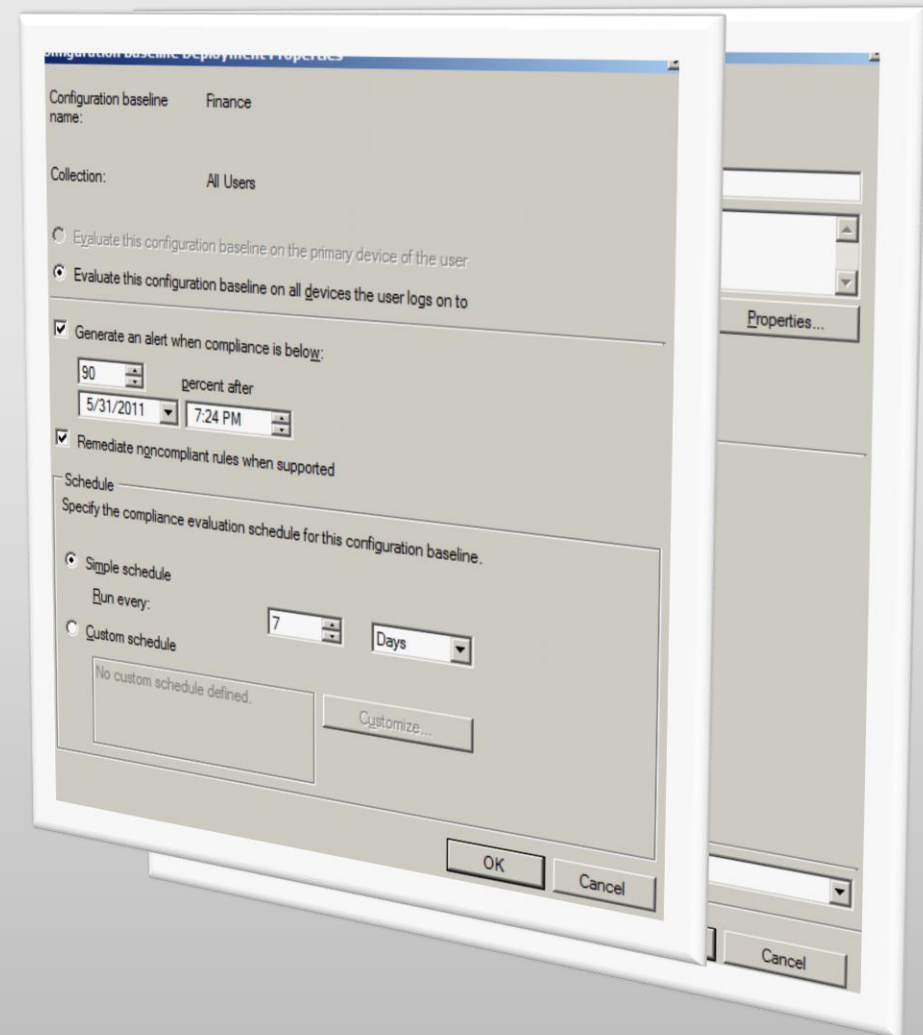
- Previously known as Desired Configuration Management - DCM
- Enable you to:
 - Define corporate configuration standards
 - Report on configuration compliance across managed Windows systems, Mobile devices and MAC OS X devices
 - Remediate clients
 - Company resource access
- The Art of knowing what to monitor
- Integration with Service Manager & Operations Manager

Terms And Concepts

- Configuration Item (CI)
 - Units of configuration that can be detected, applied, and removed from ConfigMgr managed machines
 - Application CI
 - Operating System CI
 - General CI
 - Software Updates CI
- Configuration Baseline
 - A collection of CI's
 - Can be assigned to collections for compliance monitoring
- Profiles
 - Used to deploy settings to mobile devices
- Can be user and device based

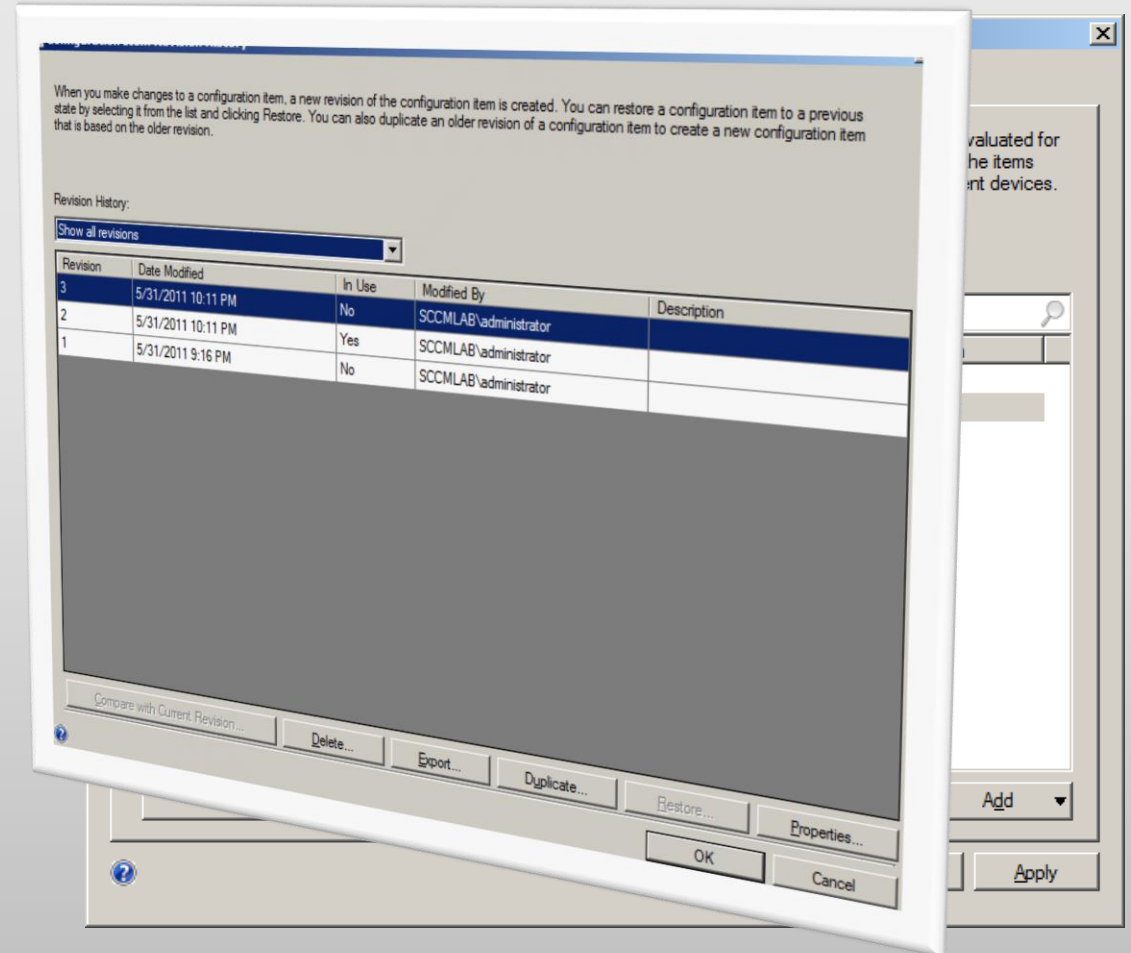
Automatic remediation

- Automatic remediation
 - Built-in feature in CM2012
 - Works
 - Registry
 - Scripts
 - WMI
- Enabled on the CI
- Enabled on the Baseline
 - Otherwise the baseline will be monitoring only



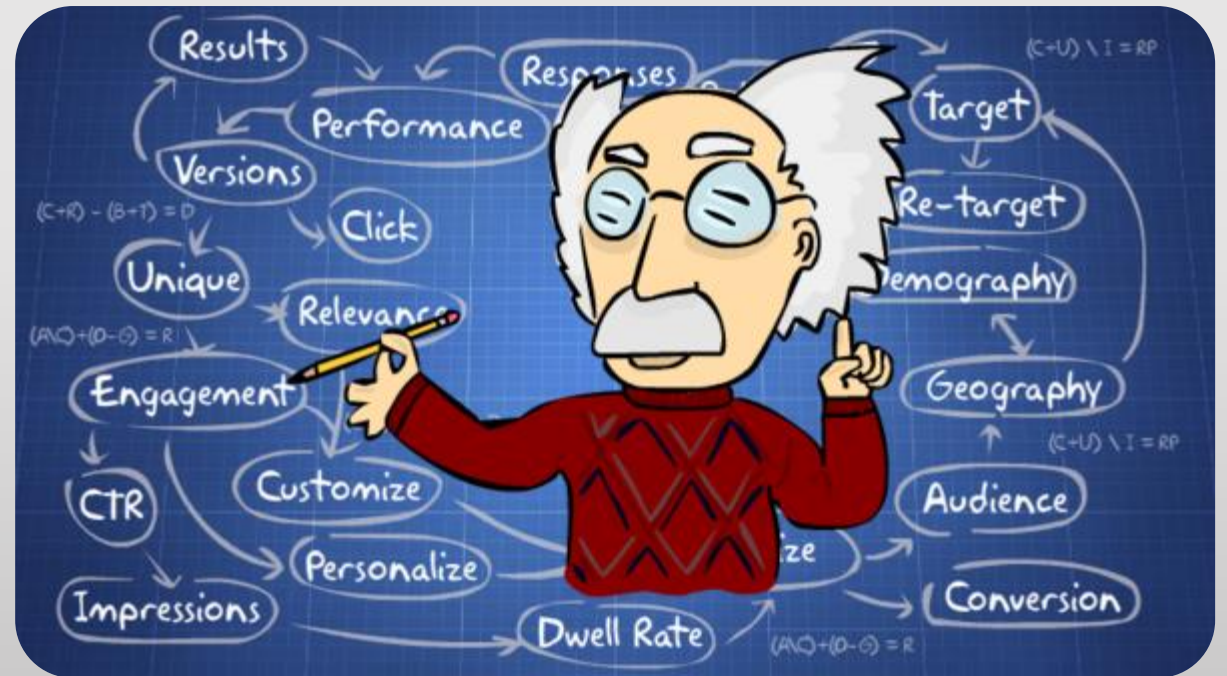
Revisioning and Audit Tracking

- Revisions on each CI
- Can control the version released in the baseline



Use cases

Let's go into demo mode



Registry Management

- Client Remediation
 - Why: Configure Server for monitoring only
- Software Update Point
 - Why: Ensure all clients are using the correct SUP
- Proxy enabled
 - Why: Ensure all are using the correct Proxy settings



Application tracking

- Application is installed
 - Why: White list & Black list
- Who installed the application
 - Why: Mostly for fun
- Gathering license information
 - Why: License control
 - <http://www.techygeekshome.co.uk/2013/06/adobe-products-serial-number-reporting.html>



Scripting

- Replace Group Policy
- Installing printers
 - Why: Replacing preferences and logon scripts
- Enable & Disable Windows settings
 - Why: Want to run Client Center 😊
- Dealing with shortcuts
 - Why: Because we can
- Control MAC OS X



WMI

- Windows Management Instrumentation
 - The Tools (just a few)
 - WMI Object Browser
 - Scriptomatic
 - Coretech WMI and PowerShell explorer
 - The namespaces
 - Standard – CimV2
 - Server side – root\SMS\Site\Site_<Sitecode>
 - Client side – root\ccm

WMI examples

- Client Cache
 - Why: Because it's not part of the default client settings
- Restart required
 - Why: Create collection based on computers in reboot pending mode

**and now it's time for something
completely different**



Resource Access Configuration

New Features*

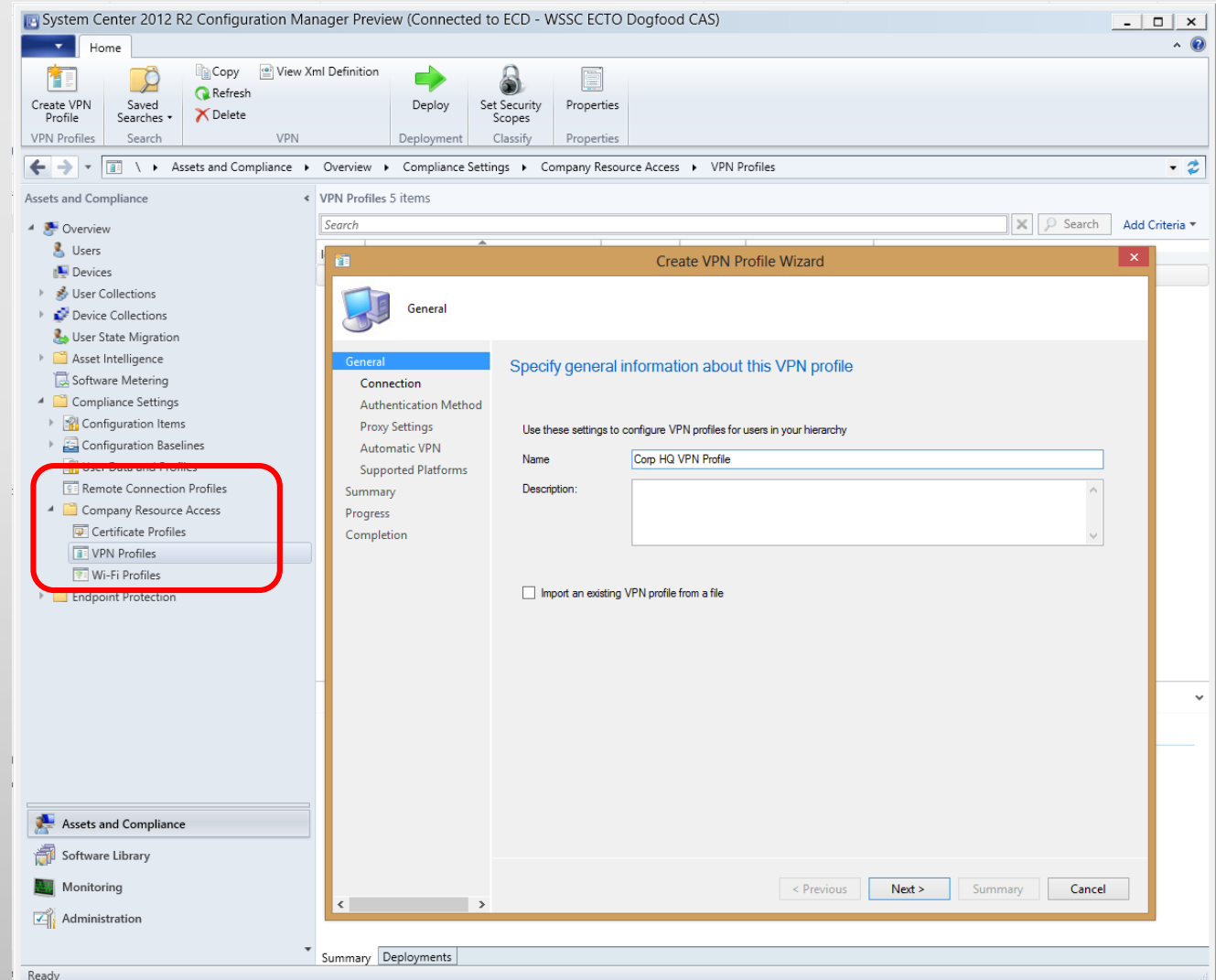
- Configure networking profiles VPN profiles
- Support for Windows 8.1 Automatic VPN
- Wi-Fi protocol and authentication settings
- Management and distribution of certificates
- Configure remote connection to work PCs

Benefits

End users get access to company resources with no manual steps for them

Support platforms

- Windows 8.1
- Windows 8.1 RT
- iOS
- Android



VPN Profile Management



Support for major SSL VPN vendors

SSL VPNs from Cisco, Juniper, Check Point, Microsoft, Dell SonicWALL, F5
Subset of vendors have Windows
Windows RT VPN plug-in

Support for VPN standards like PPTP, L2TP, IKEv2



Automatic VPN connection

DNS name-based initiation support for Windows 8.1 and iOS
Application ID based initiation support for Windows 8.1

Wi-Fi and Certificate Profiles



Wi-Fi settings

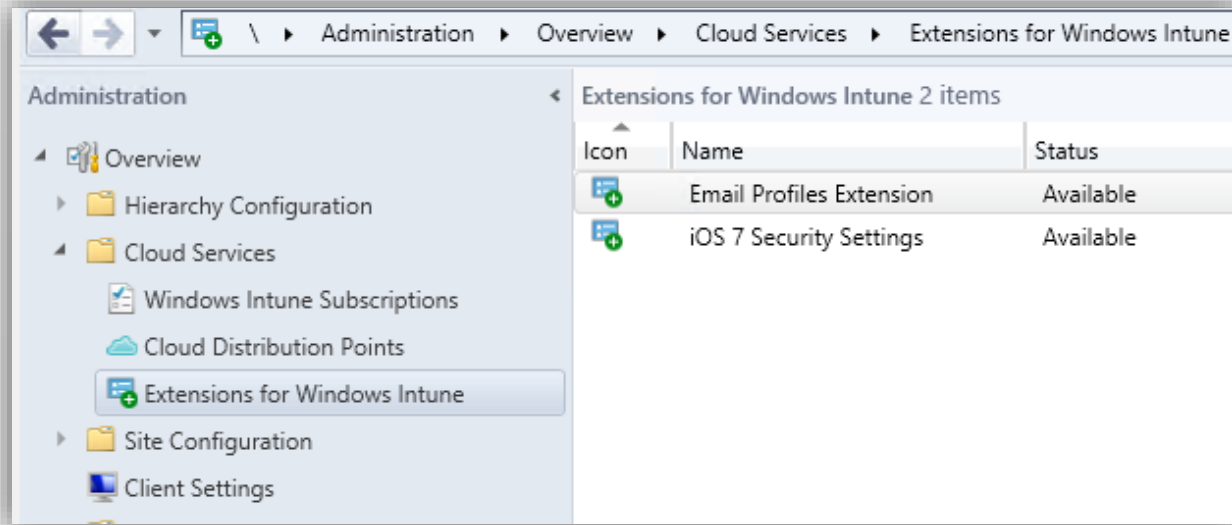
- Manage Wi-Fi protocol and authentication settings
- Provision Wi-Fi networks that device can auto connect
- Specify certificate to be used for Wi-Fi connection



Manage and distribute certificates

- Deploy trusted root certificates
- Support for Simple Certificate Enrollment Protocol (SCEP)

Email profiles



- New Intune extension
- Email ActiveSync settings to Windows Phone 8 and IOS
- Authentication
 - Certificate & Username/Password
- Selective wipe

Danke



Herzlichen Dank

Mirko Colemberg @mirkocolemberg

blog.colemberg.ch

Bewertung der Session: [Configmgr.ch](https://www.configmgr.ch)

- Xing: <https://www.xing.com/net/cmce>
- Facebook: <https://www.facebook.com/groups/411231535670608/>
- LinkedIn: <http://www.linkedin.com>
- Twitter: https://twitter.com/configmgr_ch

Nächster Event: Donnerstag 2. Oktober Digicomp Zürich

Tagesthema OS-Deployment mit Johan Arwidmark und Mikael Nyström