



MIRKO COLEMBERG

CONSULTANT/ MCT

COLEMBERG.CH GMBH

MIRKO@COLEMBERG.CH @ MIRKOCOLEMBERG

BLOG.COLEMBERG.CH / CONFIGMGR.CH

RBA Role Based Administration verschiedene Szenarien

Secunia
Stay Secure

Configuration Manager

Szenarien

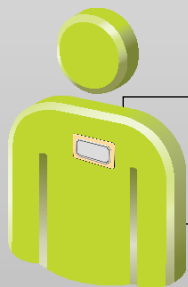
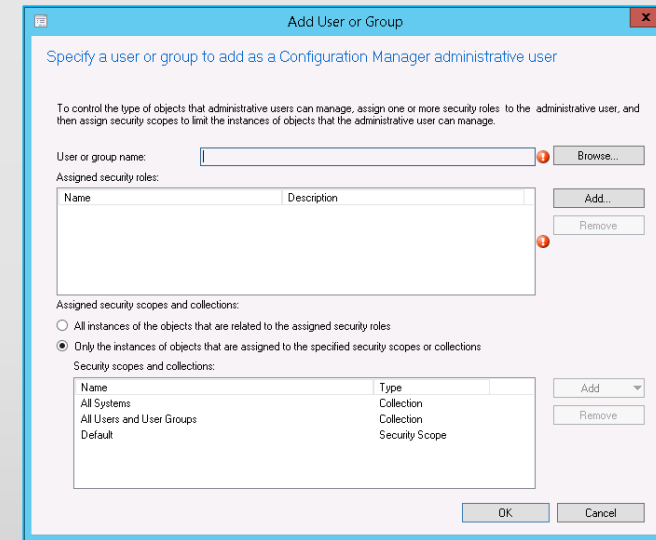


- all in One
 - Have a Developer Environment
 - Have a Quality Environment
 - Have a Production Environment
- Identify existing segmentations of devices or users by examining:
 - Corporate functional organizations
 - Geographic alignment
 - Servers versus desktops
 - Unique characteristics of managed devices or users
 - Groups with special security requirements
 - Business processes that require different resource collections

Aufbau Struktur in CM12



- User/Group
- Scopes
- Folder, Collections, Applications, Packages
- Role

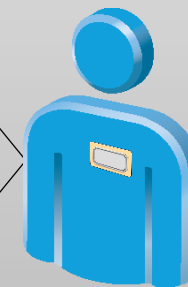


User or Group

Assign a Role
Application Administrator

Assign a Scope
Custom scope containing objects to manage




Assign a Collection Custom collection containing users or computers to manage



AD-DS Users and Groups



- Users
- Groups

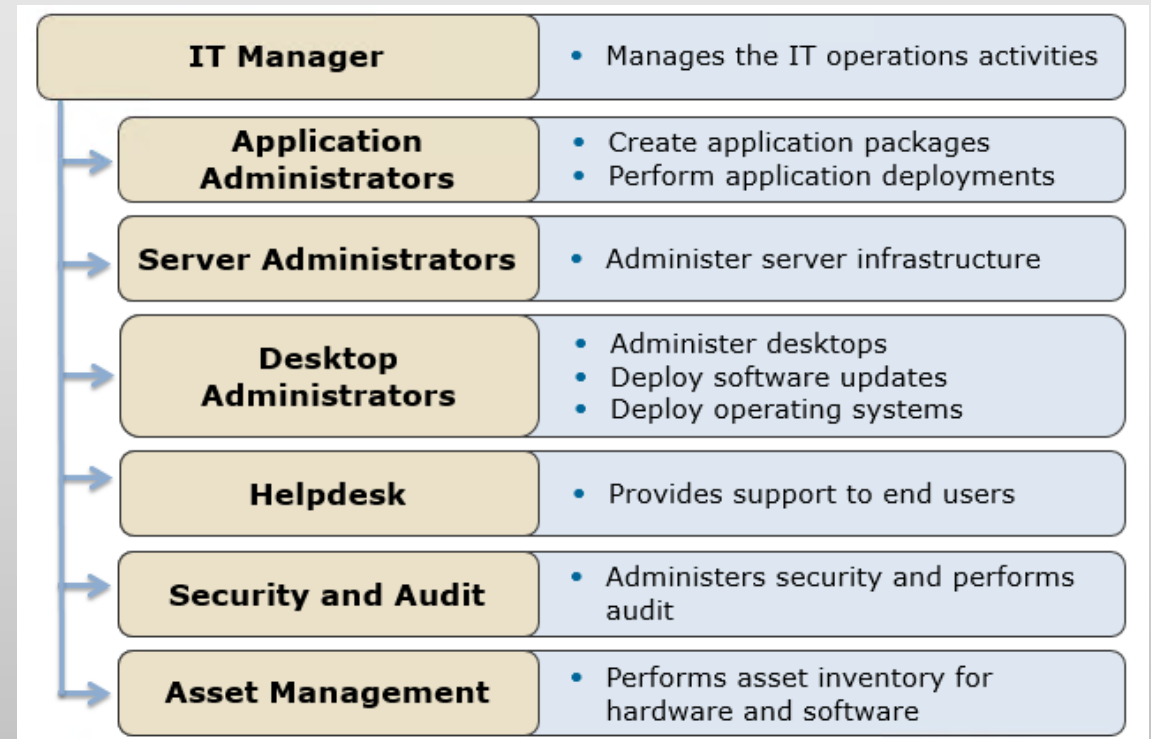
Name	Type	Description ▼	City
 QA Users	Security Group...	SCCM QA Users (Don)	
 Production Users	Security Group...	SCCM Prod Users (Ed)	
 Developer Users	Security Group...	SCCM Developer Users (...)	

- Cofigure in CM12 AD Group Discovery with this new Groups
 - There is no cmd-let yet ☹️
- Groups can't be empty for a success Group-discovery Job

Scopes



- Create Scopes (all in One)
 - Developer
 - QA
 - Production
- Create Scopes (Daily Business)
 - Helpdesk
 - Application Management
 - Developer
 - Etc.



Folder, Collections, Software

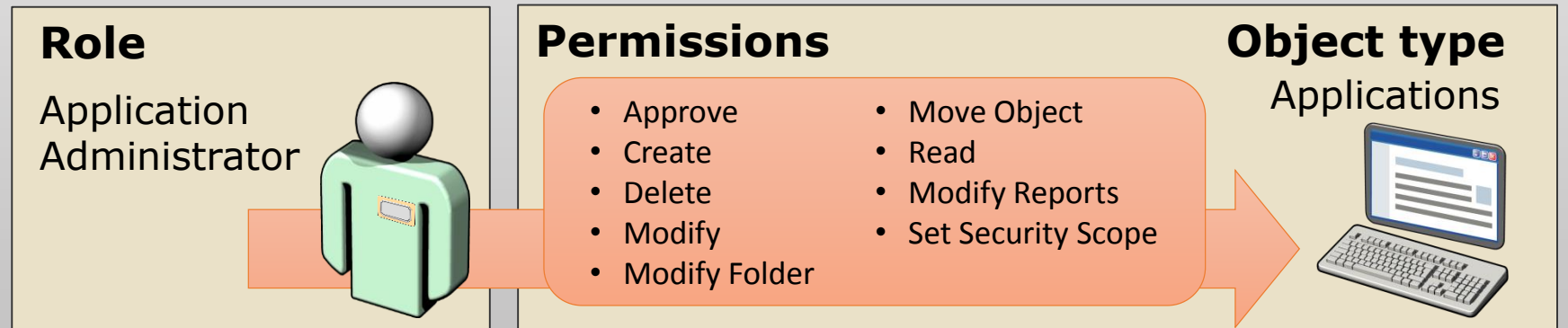


- Applikation, Packages or others split in to Developer, QA, Production Folders
- Create Folder Structur
- Create Collections
- Import or create Software and set a scope
- You can Move the Objects to the right Folder and change the Scope

Role



- Create Seperate Roles with RBA-Viewer



Tools/Scripts



- Use the RBA-Viewer in the Toolkit from MS to create your Own Roles
 - Export the xml from RBA-Viewer
 - Import the xml
 - Manually
 - Use Powershel cmd-let «Import-CMSecurityRole»
 - Run the Scripts to Create the Folders
 - Run the Scripts to Create the Collections incl. Query
-
- Later should a script go public for automatic change the Scope by move the SW to another Folder.
Blog.colemberg.ch

Logs, Reports



- SCCM LOG:
 - Discovery: compsumm.log
adsgdis.log

- Reports:

	Administration Activity Log
	Administrative users security assignments
	Objects secured by a single security scope
	Security for a specific or multiple Configuration Manager objects
	Security roles summary
	Security scopes summary

Danke



Herzlichen Dank

Mirko Colemberg @mirkocolemberg

blog.colemberg.ch

Bewertung der Session: <http://configmgr.ch/category/cmcecu1/>

- Xing: <https://www.xing.com/net/cmce>
- Facebook: <https://www.facebook.com/groups/411231535670608/>
- LinkedIn: <http://www.linkedin.com>
- Twitter: https://twitter.com/configmgr_ch

Nächster Event: Donnerstag 2. Oktober Digicomp Zürich

Tagesthema OS-Deployment mit Johan Arwidmark und Mikael Nyström