



CloudBridge 7.3 and the Windows Server Appliances

Simeon Bosshard, Systems Engineer
Citrix Systems International GmbH

06.11.2014



CloudBridge

Release 7.3



Visibility



**Enhanced
Optimization**

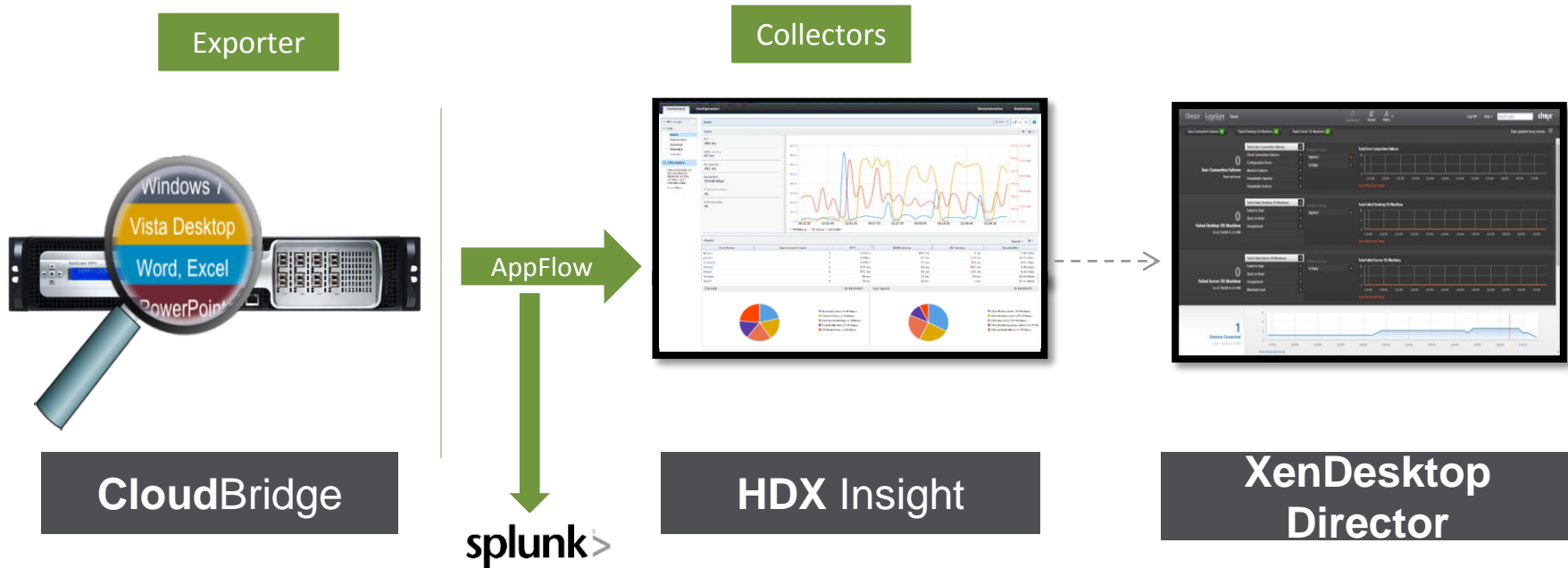


**Usability &
Manageability**



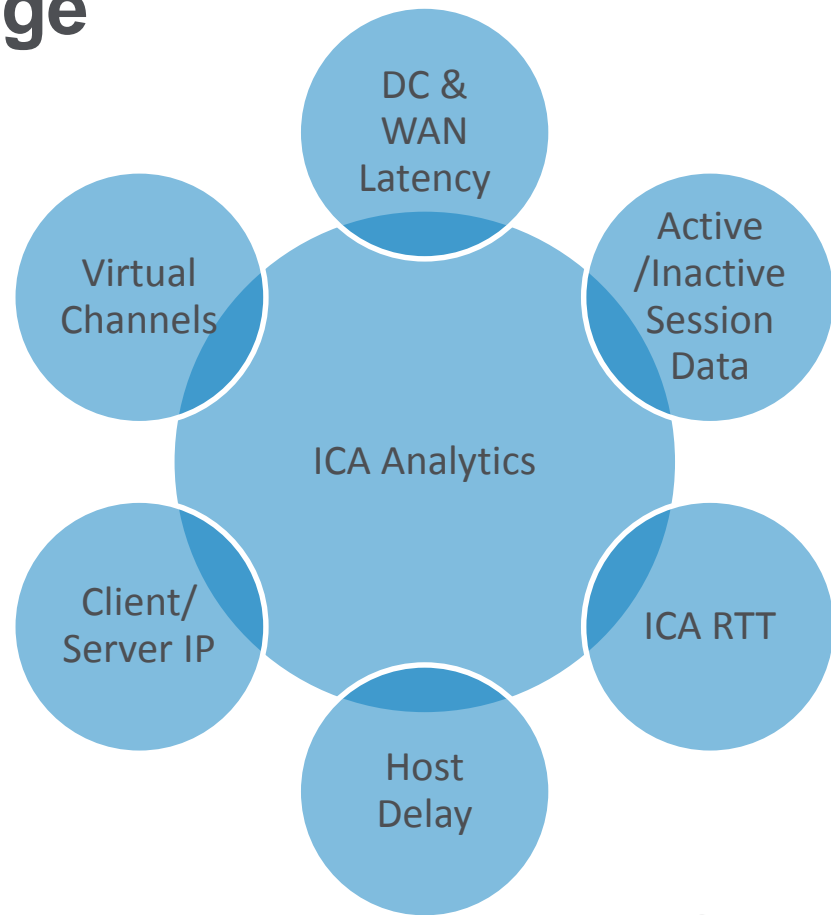
**Field-enabler
tools**

Visibility with CloudBridge

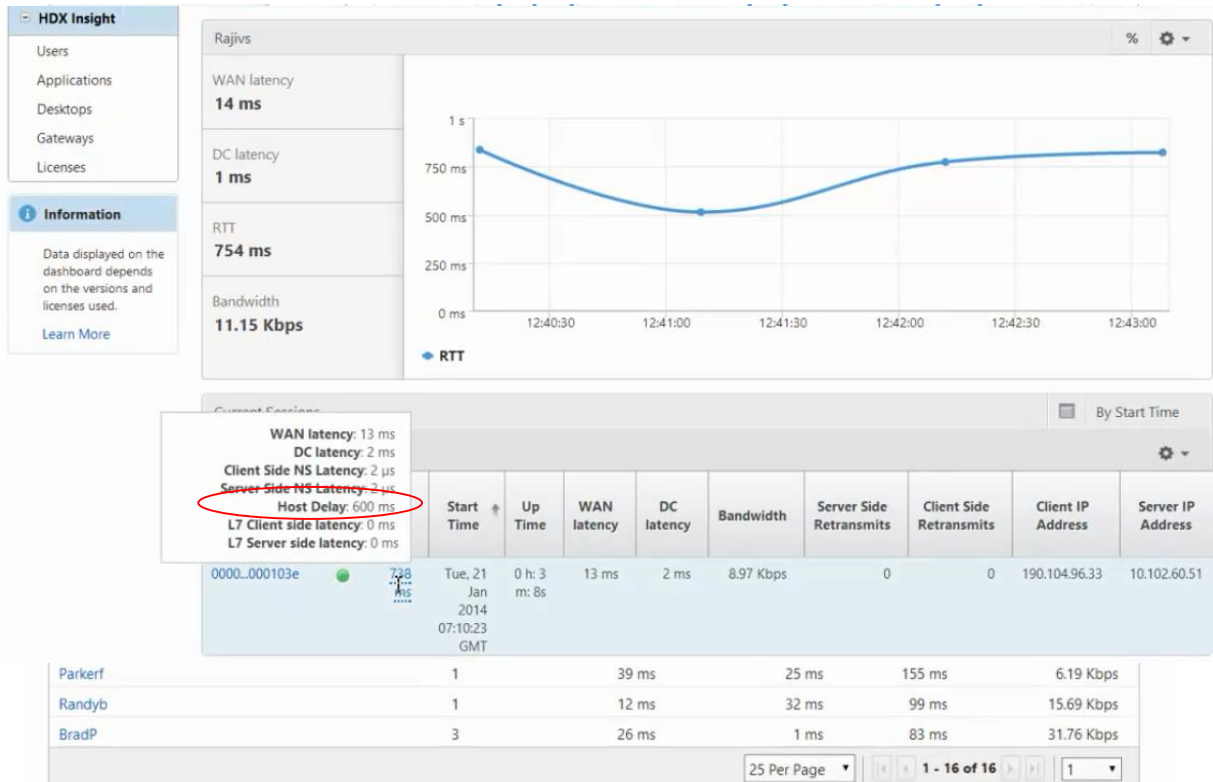


HDX Insight for CloudBridge

- Provide HDX insight support for branch users
- Insignificant load on CB appliance
- Roadmap: hop-by-hop information, support of multiple protocols

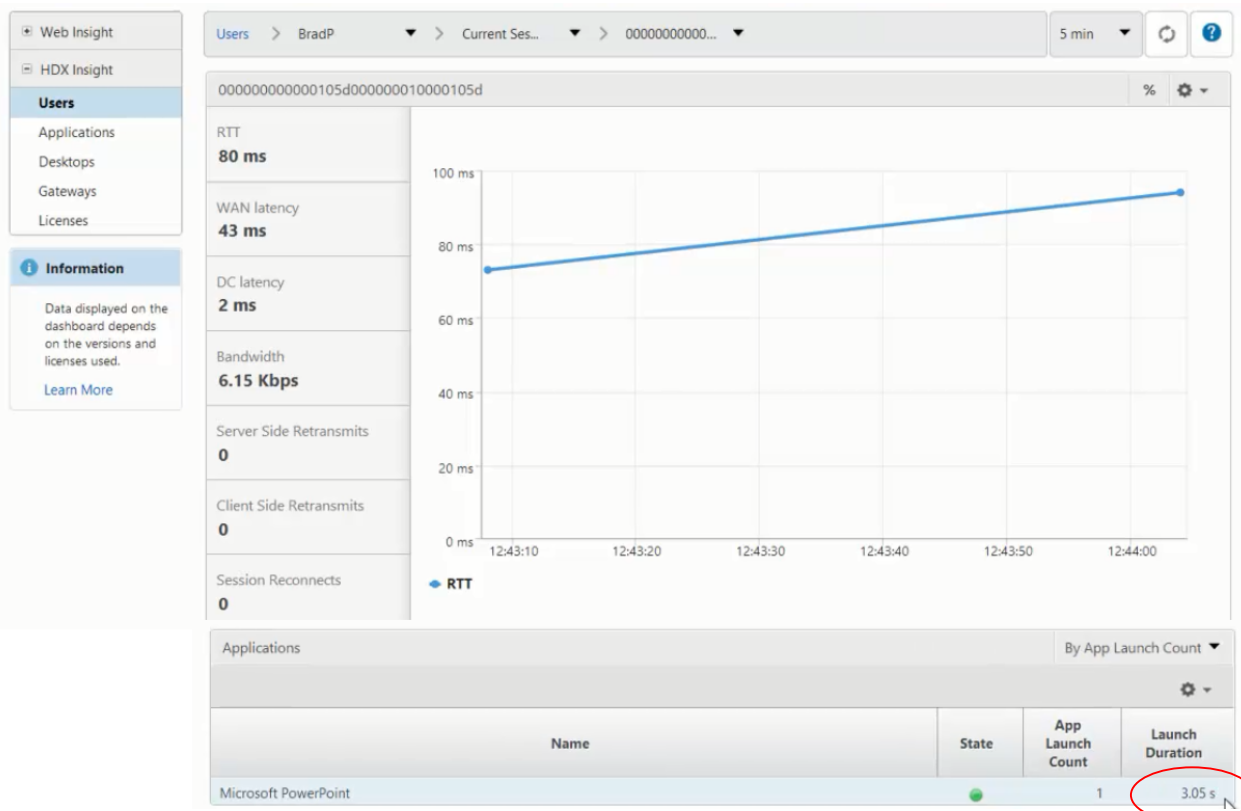


HDX Insight value proposition: Scenario 1



Issue Identified: **Host Delay**

HDX Insight value proposition: Scenario 2



Issue Identified →
**High App Launch
Duration**

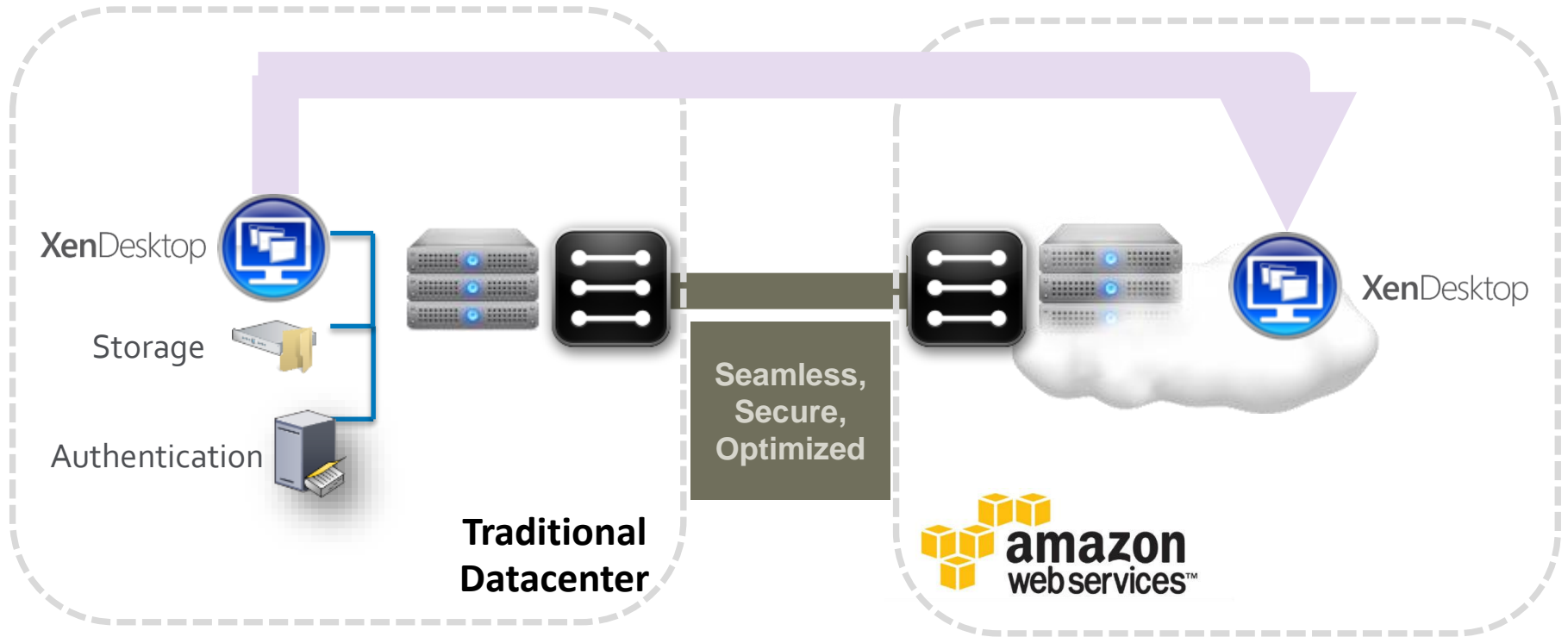
Optimize RPC over HTTPS

- Default protocol with Exchange 2013

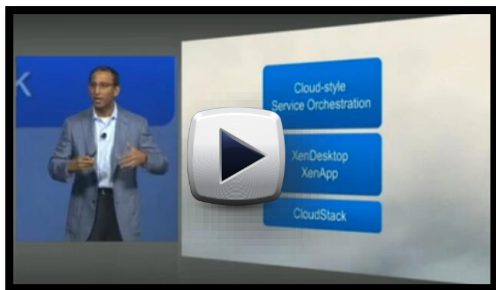


- Configure SSL certificate and service class
- Compression benefits similar to MAPI

Deploying XD 7.5 on AWS? Optimize with CloudBridge !



Video Caching enhancements



Video caching

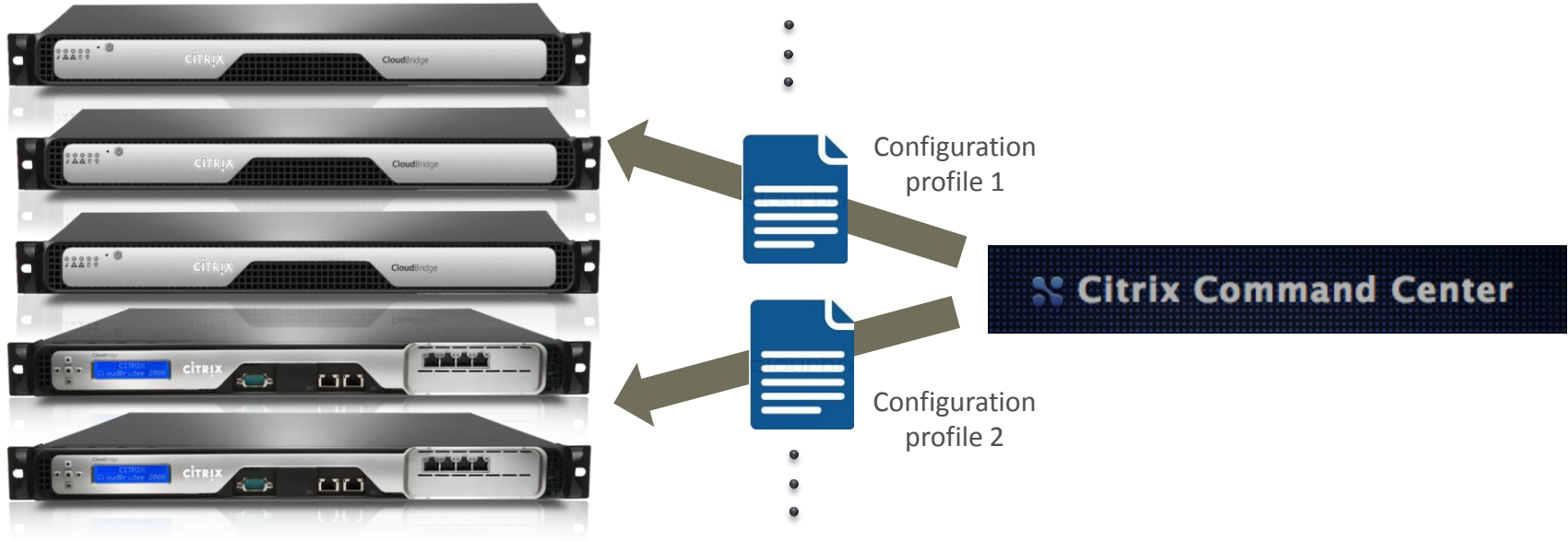


Scheduled Pre-population



Centralized management

Auto-Configuration using Command Center





Hardware installation

DHCP-based configuration

DNS look-up for CC alias



Create configuration profiles

Map configuration profiles to SN or IP

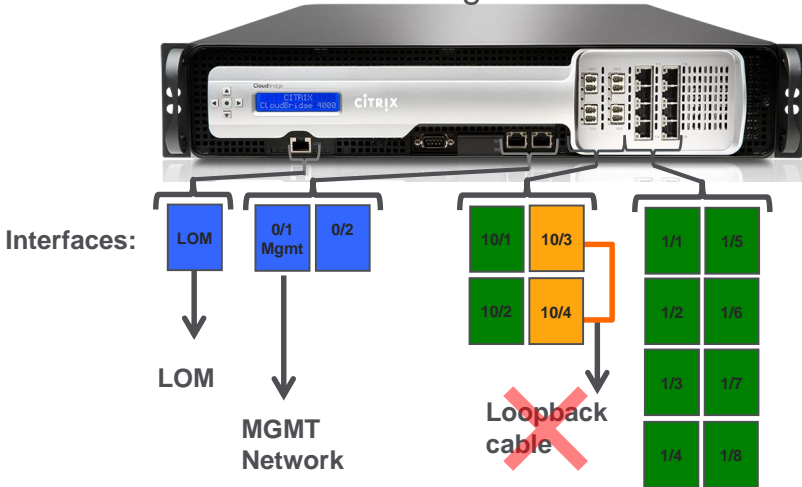
Registration request

Push configuration for CloudBridge

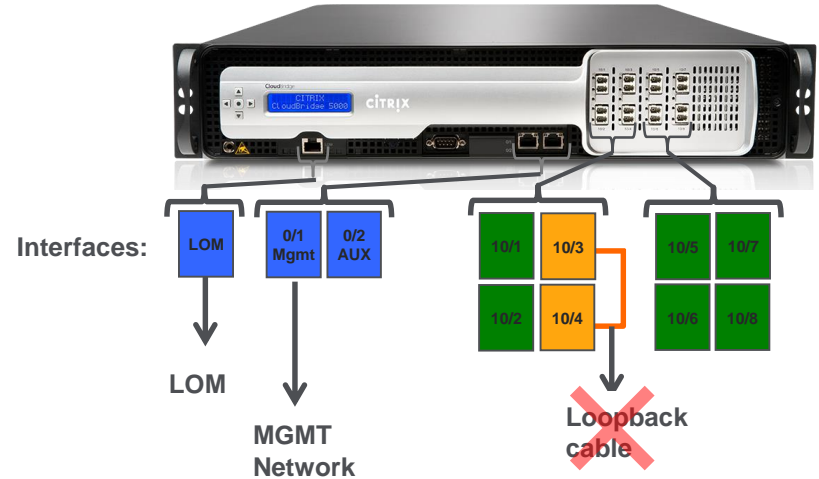
Usability enhancements

- Factory image updated to 7.2.2: Pay-grow new CB 4000 & CB 5000 with just license change
- Eliminated need for loopback cable

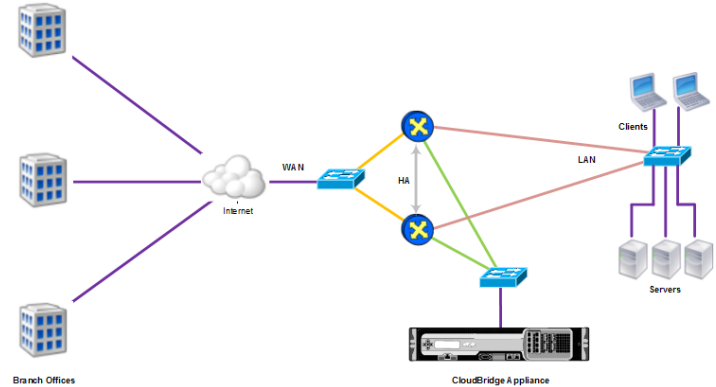
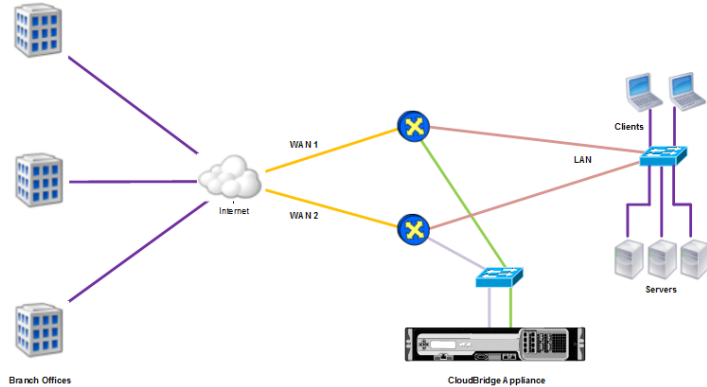
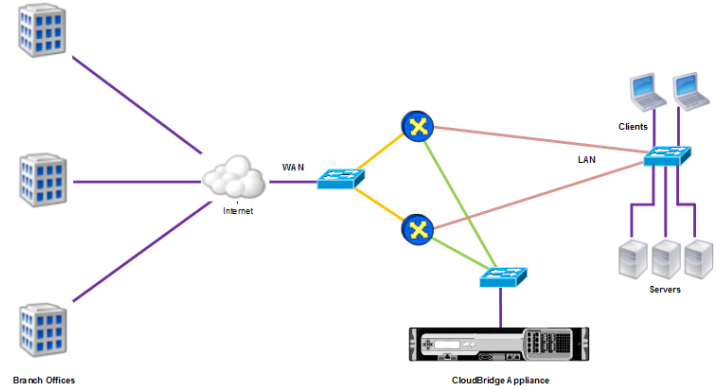
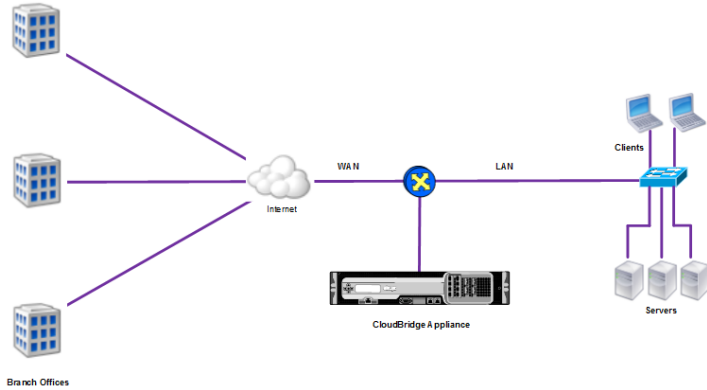
CloudBridge 4000



CloudBridge 5000



Catalog of Validated Designs: PBR & WCCP



The CloudBridge - Windows Server Platforms



CloudBridge 2000WS and 1000WS Branch Platforms

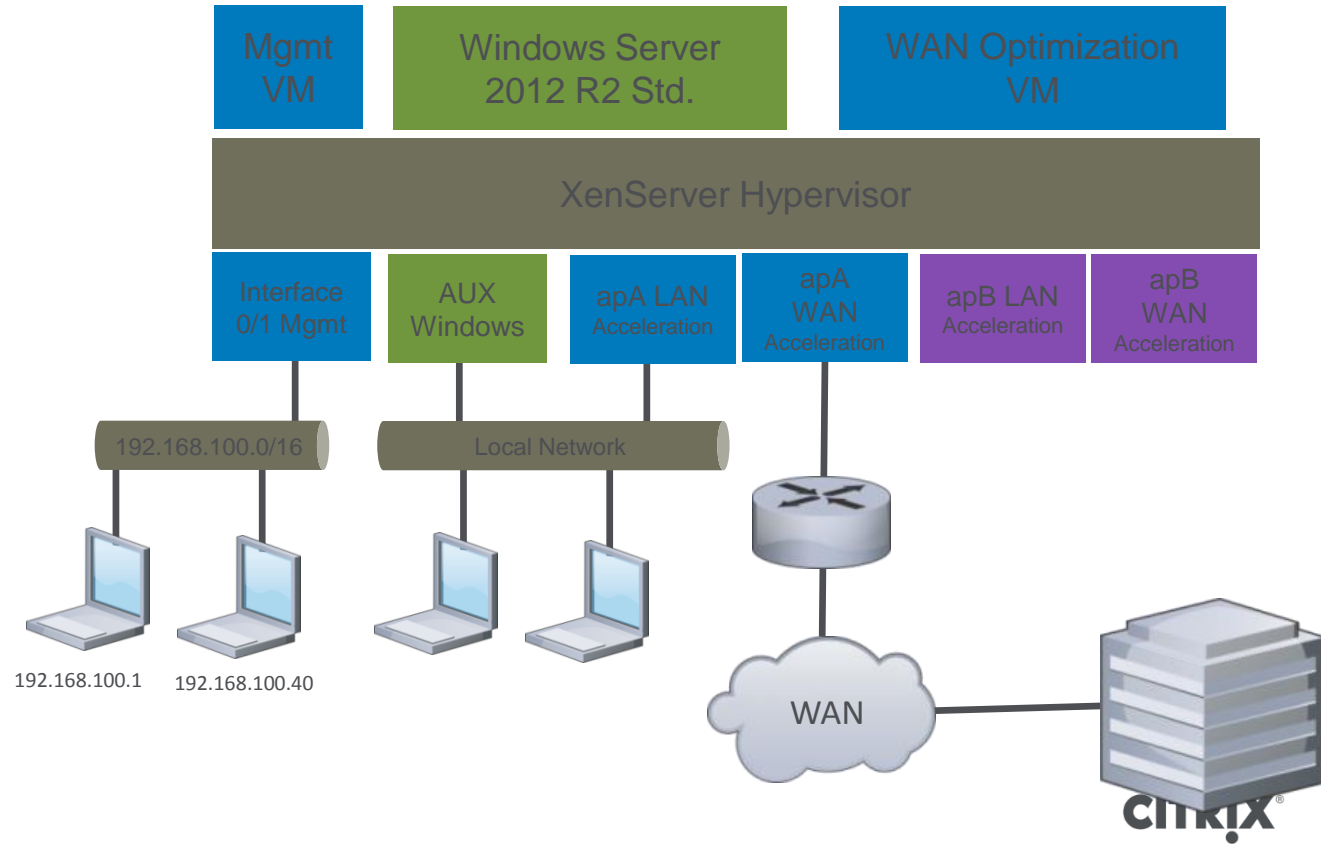
- 6 to 50 Mbps of accelerated throughput
- Windows Server 2012 R2 Standard Edition fully installed, licensed configured and supported by Citrix
- 60 to 300 concurrent HDX sessions
- Up to 200 Mbps QoS throughput
- 10,000 to 20,000 TCP sessions
- Beta response score 8.5 out of 10 – 100% would recommend



Configurations:	CloudBridge 2000	CloudBridge 1000
CPU	E3-1275 4 core, 3.4 GHz	E3-1105C v2 4 Core 1.8GHz
Memory	24 GB	32 GB
Storage	Intel 600 GB SSD (WAN opt) 2 x 1 TB HDD (Windows)	Intel 300GB SSD (WAN opt) Seagate 1TB HDD (Windows)
Recovery	Disk boot partition	16GB Internal eUSB
Network Interface	2 pair w/bypass 10/100/1000	2 pair w/bypass 10/100/1000
Cooling Fans	4 high speed N+1 redundant)	3 low speed(N+1 redundant)

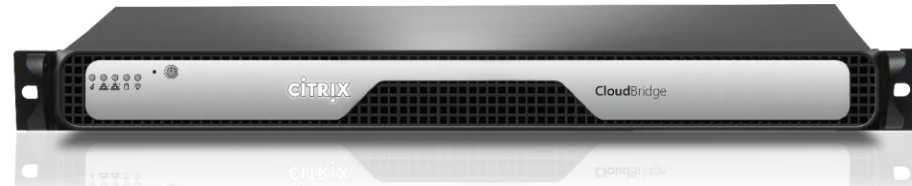
Citrix Extensible Appliance Architecture

- Hypervisor-based architecture
- Secure: all VMs fully isolated from the others
- Guaranteed acceleration bandwidth



- License levels: 6 / 10 / 20 Mbps
- Pay Grow available
- HDX Sessions: 60 / 100 / 200
- TCP Sessions: 10,000
- Full-featured, advanced WAN optimization
- Full Windows Server domain controller / server functionality
 - AD, DNS, DHCP, RODC, LDS
 - File & Print

Up to 200 ICA sessions



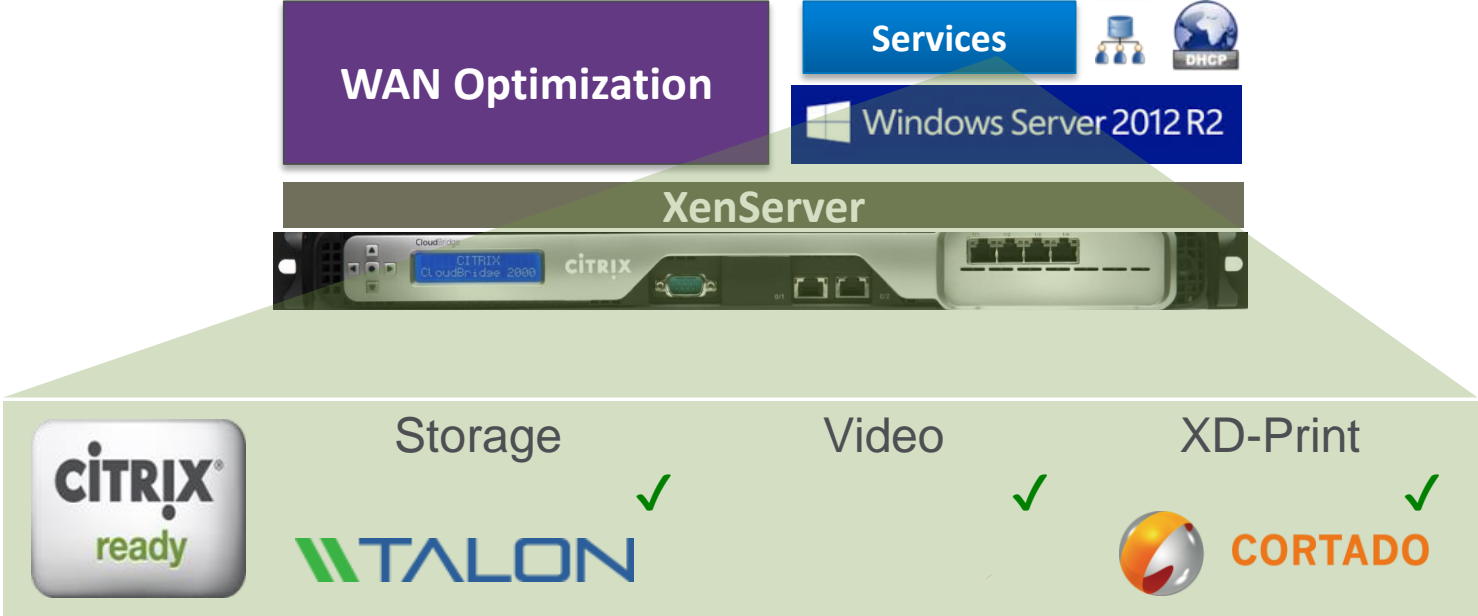
CloudBridge 1000WS



Windows Server 2012 R2

CloudBridge CSX

CloudBridge CSX: Extend the cloud to the branch



How Business Does Video

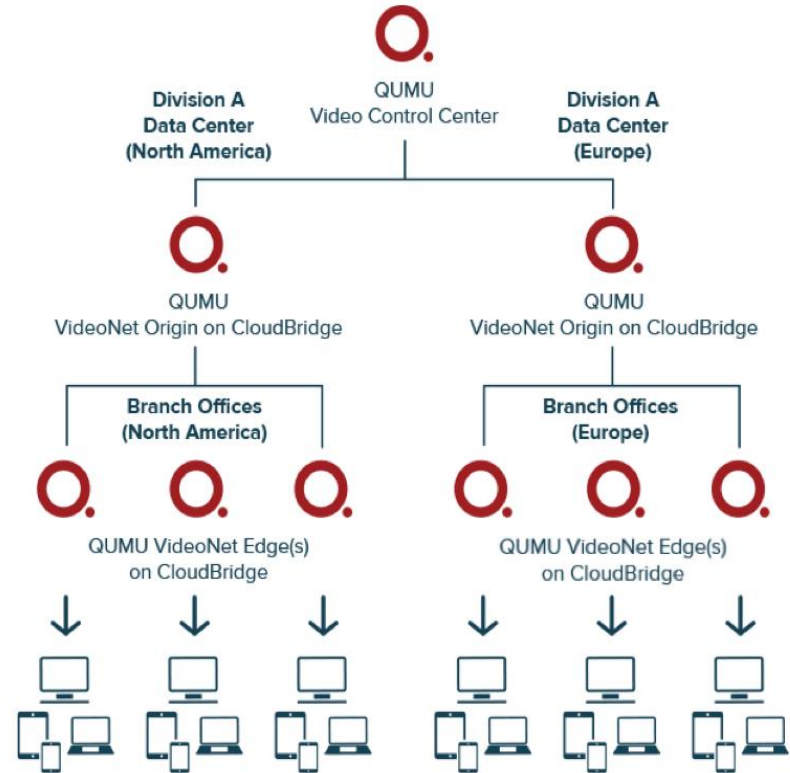
- Provides business with end-to-end video solutions to create, manage, secure, distribute and measure the success of videos
- Engage and empower employees, partners and clients to share, collaborate with video
- Deliver to multi-screen devices, any audience size or network type
- Used by AT&T, Vodafone, Caterpillar, Cleveland Clinic, Bayer, NetApp, eBay and others across the globe in different verticals

QUMU INSIGHTS

CloudBridge and VideoNet Edge

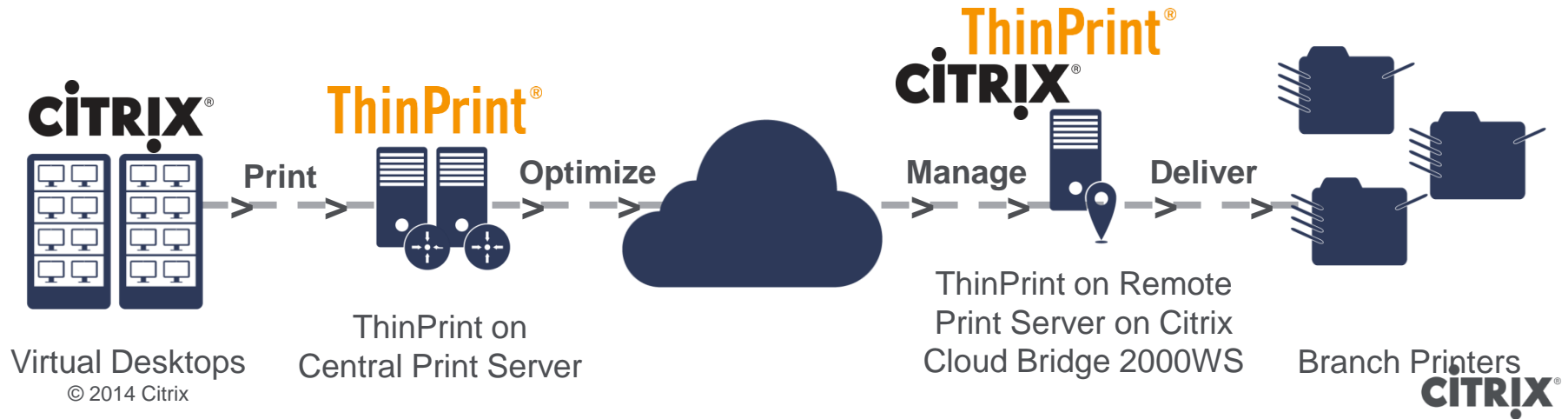
Enterprise CloudBridge + VideoNet Edge Video Solution

- CloudBridge provides required hardware, Windows OS and content storage support for VideoNet Edge for branch
- VideoNet Edge software provides enterprise level video optimization
- Edge caching and stream splitting enables scale at branch but only single stream passes through WAN
- Schedule pre-position VOD at branch locations during off-peak hours
- Supports Windows Media unicast and multicast, H.264 multicast, Flash, HLS and Smooth Streaming



ThinPrint + CloudBridge = Easy Branch Office Printing

- Full ThinPrint print optimization and innovation in the branch
- CloudBridge replaces all ThinPrint related hardware in the branch
- Remote Print Server on CloudBridge adds flexibility for branch offices
- Simple, centralized management of all ThinPrint components



Branch Consolidation

The morphing branch



Marketing & Merchandising Video

Collaboration and File Sharing

Traditional DC Apps and Data

Video and “Egocasting”

Helper Apps

Branch storage convergence

- Citrix approach
 - Fully installed, configured and licensed Windows Server 2012 R2
 - Supported by Citrix
 - Everything's included
 - Supports standard MS file handling including DFS
 - Key partners for
 - Printer management
 - Video stream splitting
 - File Collaboration
- “Others” approach
 - Preconfigured virtual machines – Riverbed 5, Cisco 2
 - Customer installs, configures and manages
 - Cisco & Riverbed charge for VM support
 - Cisco Office-in-a-box
 - ...or you can use Granite – now called SteelFusion

Q&A

CITRIX®