



Citrix VDI Image made by ConfigMgr

Netree AG
IT Consultants



Daniel Bühlmann, Netree AG

Consultant / CTO

Mail: daniel.buehlmann@netree.ch

Patrick Kunz, Netree AG

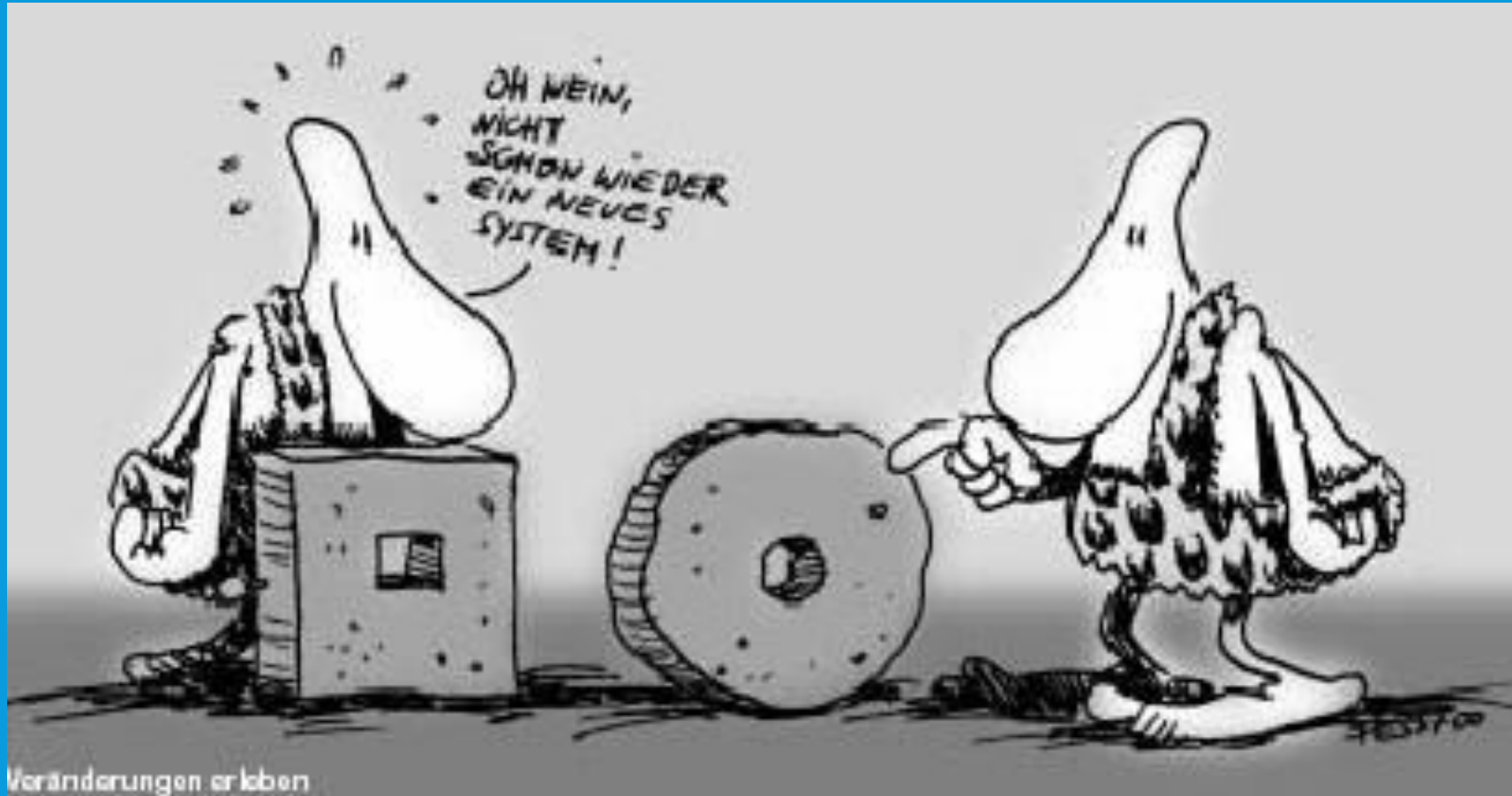
Consultant / Citrix CCE-V

Mail: patrick.kunz@netree.ch

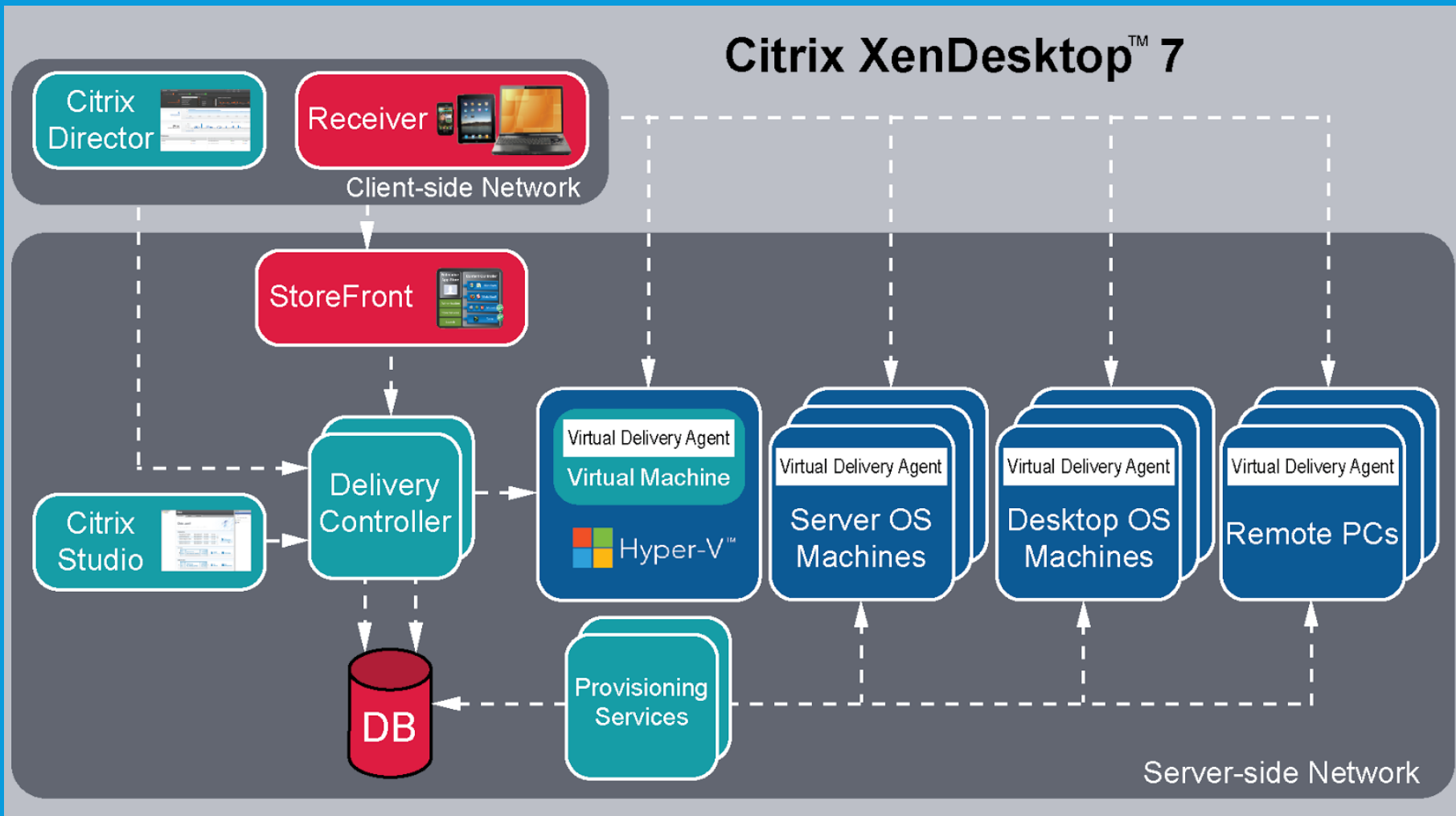
Agenda

- Citrix XenDesktop – Streaming virtual Desktops with PVS
- Virtual Desktops – Random vs. Static
- Workplace Management – Very, very, very important 😊
- Image Management
- Image build in ConfigMgr

«Time to Change»



Citrix XenDesktop – Overview



Receiver:

- Client Software
- Connect to Desktop (VDA)

StoreFront:

- User Authentication
- Shows User Resources

Delivery Controller:

- Resourcen Control
- Generates Resource XML

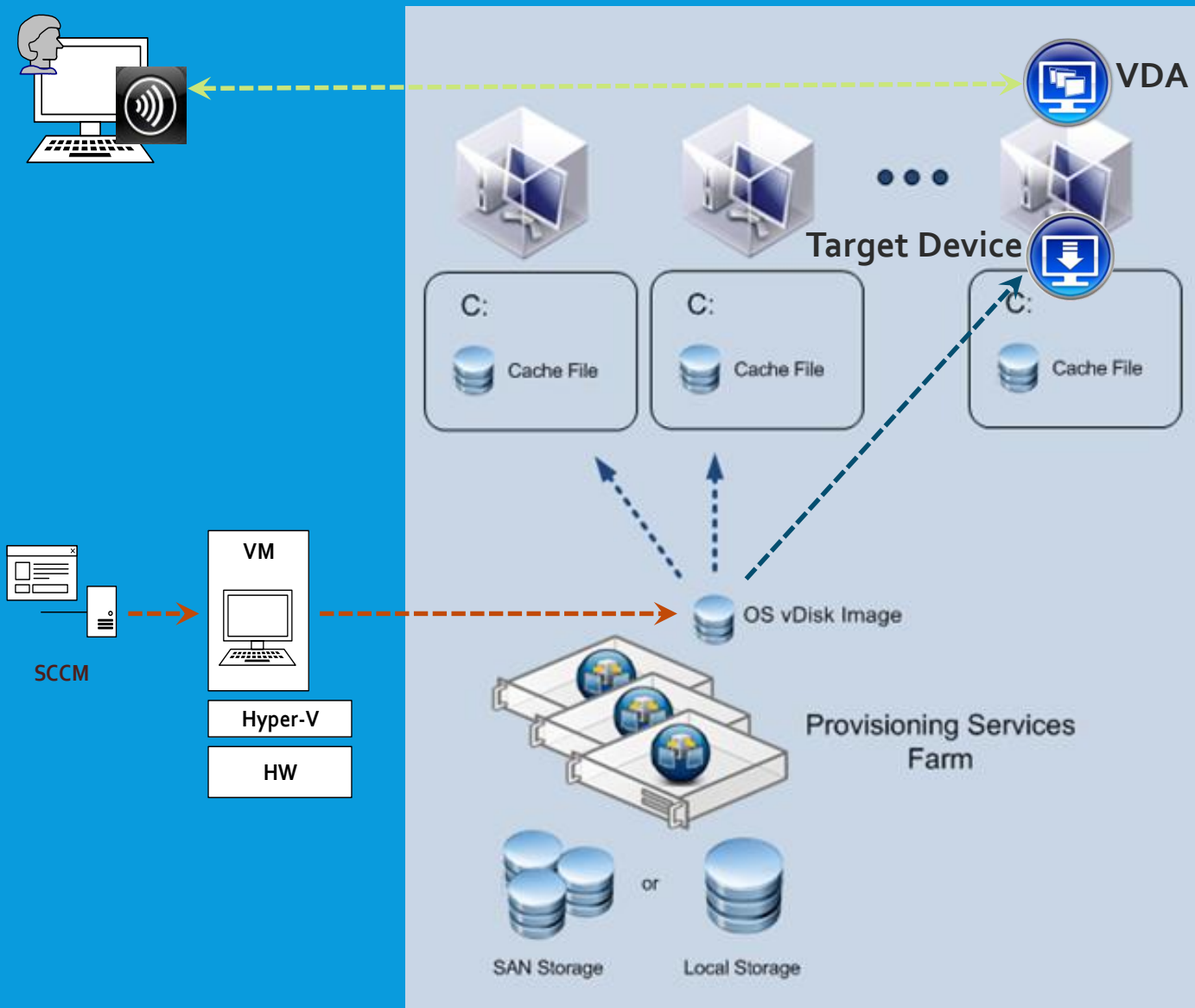
SCVMM:

- Hyper-V VM Controlling

PVS (Provisioning Services):

- Imaging Streaming (VM/PHY)

Citrix XenDesktop – Streaming with PVS



PVS Boot Sequence:

- VM boots (PXE or ISO) and get an IP
- Bootstrap download
- Login and start Streaming
- BINSTACK driver (Windows) is taking over

VDA Agent:

- Desktop Software (installed in the image)
- ICA Connection Layer

Target Device Software:

- Desktop Software (installed in the image)
- PVS Connection Layer

Write Cache:

- All write Operations → cleared after Reboot
- Storage: RAM, local or Network

Virtual Desktops – Random vs. Static

RANDOM



- Pooled, Floating, Non-persistent, Stateless, ...
- Image only (PVS or Machine Creation Service)
- ConfigMgr Client: *not recommended*
- Pros:
 - Image based, clean Installation, Management
- Cons:
 - Image based

STATIC



- Private, Dedicated, Persistent, Stateful, ...
- Image or direct build by ConfigMgr (OSD)
- ConfigMgr Client: *recommended*
- Pros:
 - Management like FAT Clients!?
- Cons:
 - Expensive, like FAT Clients

Workplace Management

User Profile



- Logon Time Killer for random VDI!
- Roaming Profiles and Folder Redirection are required!
- Microsoft roaming Profiles are too static
- Third Party Solutions:
 - Citrix User Profile Manager: integrated in VDA, easy and efficient, GPO Config
 - RES Workspace Manager: additional Costs, complex, a lot of Features...
 - Microsoft UE-V: MDOP License, XML based Configuration, Agent

Application Handling



- Application Virtualization (App-V) is required
 - App-V 5.x Full Infrastructure vs. SCCM vs. local Service
- Local installed Applications:
 - Third Party Solutions (RES, Appsense, etc.): Complex and additional License
 - Microsoft AppLocker: OS integrated, easy and efficient
 - GPO and GPP Configuration
 - Application Assignment through AD Groups
 - PowerShell cleaning Script (Shortcuts, FTAs and Plug-Ins)

Image – Lifecycle Management

Major

V 10

- Scheduled build by SCCM
- Triggers:
 - Updates / Upgrades
 - New Applications

Minor

V 10.1

- Manually copy existing vDisk → Private Mode
- Triggers:
 - Single urgent Updates
 - Bigger Configuration Settings

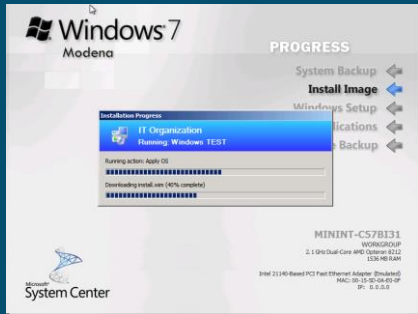
Small

V 10.1.1

- Manually copy existing vDisk → Direct Edit (attach vDisk)
- Triggers:
 - Single File manipulations
 - Smaller Configuration Settings (Registry or File)

Image build Process

OSD ConfigMgr



- Operating System
- Applications (Time-out Issue! → CU4)
- PVS Target Device
- VDA Agent
- Updates
- END - Start PS-Script

Scripting



- Reboot and Autologin Handling
- Uninstall SCCM Agent
- Citrix Best Practices
- Rearm (OS & Office)
- Printer Driver
- Cleaning Installation

Convert vDisk



- Convert VM to vDisk
- P2PVS.EXE → *.vhd

Integration



- PVS Check-in
- Master Target → Private Mode
- Manual Tasks
- Testing
- Production

Links

SCCM 2012 R2 CU4 (Download):

<http://support.microsoft.com/kb/3026739/en-us> (Download)

<http://support.microsoft.com/kb/3031717/en-us> (PowerShell Changes)

Windows local Admin Password:

<http://netecm.netree.ch/blog/Lists/Posts/Post.aspx?ID=82>

Citrix Image (vDisk) & PowerShell:

<http://www.loginconsultants.com/en/about/news/all/item/new-tool-login-pvs-target-scripts>

Microsoft UE-V (User Environment Virtualization):

<http://www.microsoftvirtualacademy.com/training-courses/mdop-user-experience-virtualization-deep-dive>

App-V 5.x – simplify Deployment:

<http://bramwolfs.com/2013/10/15/app-v-5-scheduler-an-easy-way-to-deploy-app-v-5-applications-to-your-machines/>

Danke

Bewertung der Session: www.configmgr.ch

Xing: <https://www.xing.com/net/cmce>

Facebook: <https://www.facebook.com/groups/411231535670608/>

Linkedin: <http://www.linkedin.com>

Twitter: https://twitter.com/configmgr_ch

Digicomp Kurse neu

<https://www.microsoft.com/learning/en-us/course.aspx?ID=20695A&Locale=en-us>

<https://www.microsoft.com/learning/en-us/course.aspx?ID=20696A&Locale=en-us>

Nächster Event: Freitag 19. Juni 2015 Digicomp Bern
(begrenzte Anzahl Teilnehmer)



Netree AG
IT Consultants

