

Kent Agerlund, Coretech

@Agerlund

kea@coretech.dk



# Managing Your Datacenter with Microsoft System Center Configuration Manager

# SESSION OVERVIEW

- **GETTING TO VNEXT AND SCCM 2012 R2 SP1**
- **DATACENTER MANAGEMENT OVERVIEW**
- **SOLUTIONS AVAILABLE TODAY THROUGH SYSTEM CENTER PRODUCTS**
- **COMING SOON: NEW AND IMPROVED DATACENTER MANAGEMENT FEATURES IN CONFIGURATION MANAGER**

**WORKING IN I.T. IS LIKE BEING  
MARRIED**

**WHEN IT'S PERFECT, THERE'S NO  
THANKS. WHEN IT GOES WRONG, BOY  
YOU ARE IN SHIT.**

VIA 9GAG.COM

MEMEFUL.COM



# **GETTING TO SCCM 2012 R2 SP1 AND VNEXT**

# YOUR UPGRADE OPTIONS

**CONFIGMGR 2012 AND CONFIGMGR 2012 R2 ARE TWO  
DIFFERENT PRODUCTS**

**IF YOU PLANNING ON ENABLING R2 FEATURES AS PART OF YOUR  
UPGRADE BY RUNNING THE R2 SERVICE PACK 1 UPDATE,**

## **TWO FILES**

**SC2012\_SP2\_CONFIGMGR\_SCEP.EXE – 762 MB**

**SC2012\_R2\_SP1\_CONFIGMGR.EXE – 1.1 MB**

## **NO SPECIAL EVAL MEDIA**

**INSTALLED EVAL SITE REMAINS EVAL**

**ACTIVATED SITE STAYS ACTIVATED**

Starting Version	Desired End Version	Service Pack 2 Required	R2 Service Pack 1 Required
ConfigMgr 2012 RTM	ConfigMgr 2012 SP2	Yes	No
<b>ConfigMgr 2012 RTM</b>	<b>ConfigMgr 2012 R2 SP1</b>	<b>Yes</b>	<b>Yes</b>
ConfigMgr 2012 SP1	ConfigMgr 2012 SP2	Yes	No
<b>ConfigMgr 2012 SP1</b>	<b>ConfigMgr 2012 R2 SP1</b>	<b>Yes</b>	<b>Yes</b>
ConfigMgr 2012 R2	ConfigMgr 2012 R2 SP1	Yes	No
New install	ConfigMgr 2012 SP2	Yes	No
New Install	ConfigMgr 2012 R2 SP1	Yes	Yes

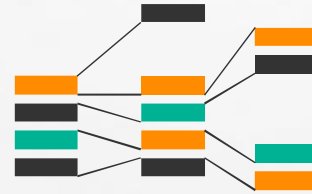
# PLANNING TO UPGRADE CONFIGMGR

- **PRE UPGRADING TASK**
  - **TEST UPGRADE A COPY OF THE THE SITE DATABASE**
  - **DISABLE MANAGEMENT POINT REPLICAS IF THEY EXIST**
  - **DOWNLOAD THE CONFIGMGR SP1 PREREQUISITE FILES**
  - **RUN THE SP1 PREREQUISITE CHECKER TOOL AND VERIFY THAT ALL PREREQUISITES ARE INSTALLED AND CONFIGURED CORRECTLY**
  - **SNAPSHOT THE SERVER**
- **UPGRADE**
- **POST UPGRADING TASKS**
  - **UPDATE BOOT IMAGES**
  - **RECONFIGURE MANAGEMENT POINT REPLICAS**
  - **UPDATE ANY CUSTOM CONFIGMGR CLIENT PACKAGES**
  - **RECONFIGURE WP 8.1 SUPPORT**
  - **VERIFY NDES**
  - **VERIFY TASK SEQUENCES ARE STILL WORKING**

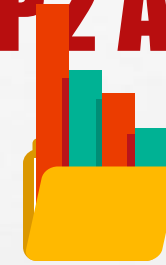
# WHAT'S NEW IN CONFIGMGR 2012 SP2 AND R2 SP1



**Faster virtual app (App-V) publishing at first logon for non-persistent VDI environments**



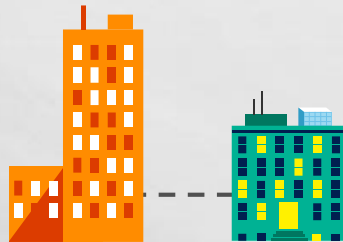
**Increased hierarchy and primary standalone site scale**



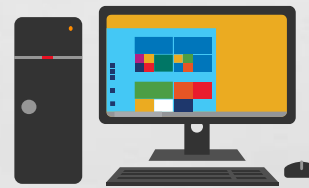
**Improved scale and performance for pull distribution points (DP)**



**Hybrid parity features for ConfigMgr integrated with Microsoft Intune**



**Improved data transfer reliability for slow and latent networks**



**Full compatibility with existing features for Windows 10**



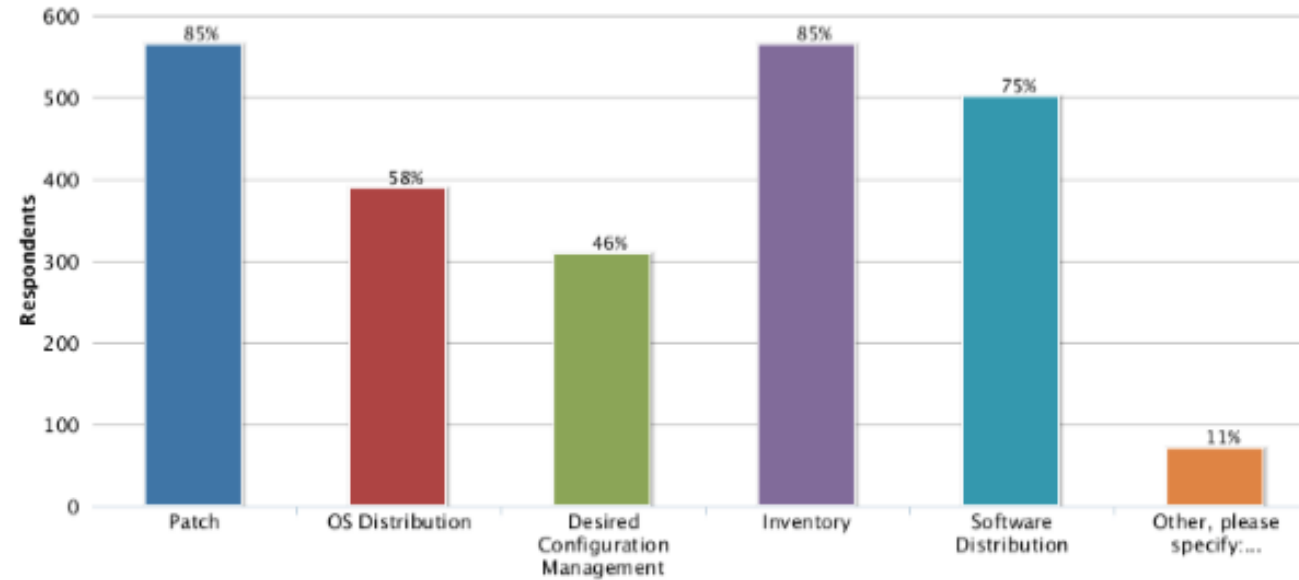
**Native support for SQL Server 2014**

# **MANAGING DATACENTERS WITH THE SYSTEM CENTER TOOLS – TODAY AND A LITTLE INSIGHT TO THE FUTURE**



# WHAT WE'RE HEARING FROM YOU

What Configuration Manager functions do you use to manage servers?



Order	Answer	Responses	Percent
1	Patch	564	85%
2	OS Distribution	389	58%
3	Desired Configuration Management	309	46%
4	Inventory	565	85%
5	Software Distribution	501	75%
6	Other, please specify: [Open-ended answer]	70	11%

# CONFIGURATION MANAGER AND DSC

- **WE'RE INVESTIGATING INTEGRATION OPPORTUNITIES BETWEEN CONFIGMGR AND THE DSC PLATFORM FOR A FUTURE RELEASE**
- **WE'D LOVE TO HEAR FROM YOU TO UNDERSTAND YOUR USE CASES AND REQUIREMENTS**
- **AT THE END OF THIS SESSION, DROP YOUR CARD OFF IF YOU'RE INTERESTED IN TALKING MORE, AND WE'LL SETUP FOLLOW UP CONVERSATIONS**

# WHAT SOLUTION IS OPTIMIZED FOR MY SERVER CONFIGURATIONS?

- **CONFIGURATION MANAGER (WITH DCM)**

- **STABLE ENVIRONMENT**

- **CHANGES OCCUR INFREQUENTLY**
- **CHANGES CANNOT BREAK THINGS**
- **PLANNED GROWTH**

- **INDIVIDUALIZED SERVERS**

- **SERVERS RETAINED FOR YEARS**
- **UNIQUE CONFIGURATION FOR EACH SERVER**
- **UNIQUE IDENTITY**

- **SOLUTION MUST LIVE ON-PREMISES**

- **AZURE AUTOMATION (WITH DSC)**

- **RAPIDLY CHANGING ENVIRONMENT**

- **CONTINUOUS DEPLOYMENT**
- **CHANGES THAT CAUSE BREAKS OCCUR AND ARE RESOLVED QUICKLY**
- **SCALE UP / DOWN**

- **SERVER ROLES**

- **SERVERS COME AND GO**
- **IDENTIFIED BY “ROLE”**
- **NO UNIQUE IDENTITY**

**SOLUTION CLOUD BASED**

# COMPLIANCE SETTINGS



# CHALLENGES

- **KPI'S**
  - **SERVICE WINDOWS**
  - **YOUR BOSS**
  - **A VISIT FROM THE INQUISITION AKA DELOITTE, KPMG ETC**
- **COMPLIANCE SETTINGS**
  - **REBOOT PENDING MODE**
  - **MISSING UPDATES**
- **DIFFERENT SERVER ENVIRONMENTS**
  - **DMZ**
- **CONFIGURATION MANAGER INFRASTRUCTURE CHANGES IN LATEST SP**
  - **MANAGEMENT POINTS**



**DEMO**

**KENT AGERLUND**

# **SOFTWARE UPDATE MANAGEMENT**

# PATCHING SERVERS

- **PLANNING**
- **COLLECTIONS**
- **MAINTENANCE WINDOWS**
- **TRACKING COMPLIANCE**



**DEMO**

**KENT AGERLUND**

# **A TYPICAL DATACENTER SCENARIO**

# IT OPERATIONS VISION

- **STANDARDIZED – BETTER ECONOMY AND QUALITY**
- **AUTOMATE – SOLVE MORE TASKS**
- **SIMPLIFY – KEEP IT EASY**
- **DOCUMENT – MUST HAVE DOCUMENTATION**
- **ADD VALUE TO EXISTING INVESTMENTS –WE HAVE THE SYSTEM CENTER SUITE LET'S USE IT**

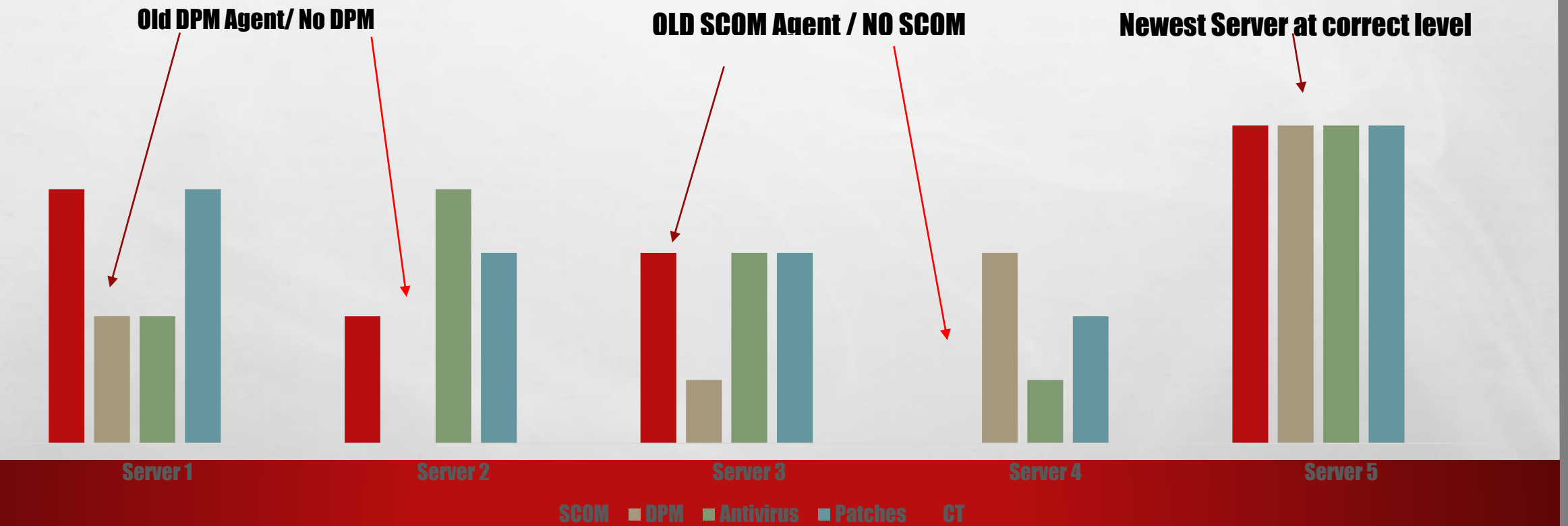
# DEFINE A STANDARD SERVER IN 2015?

## IT OPERATION DELIVERABLES (BUSINESS/CUSTOMER EXPECTATIONS):

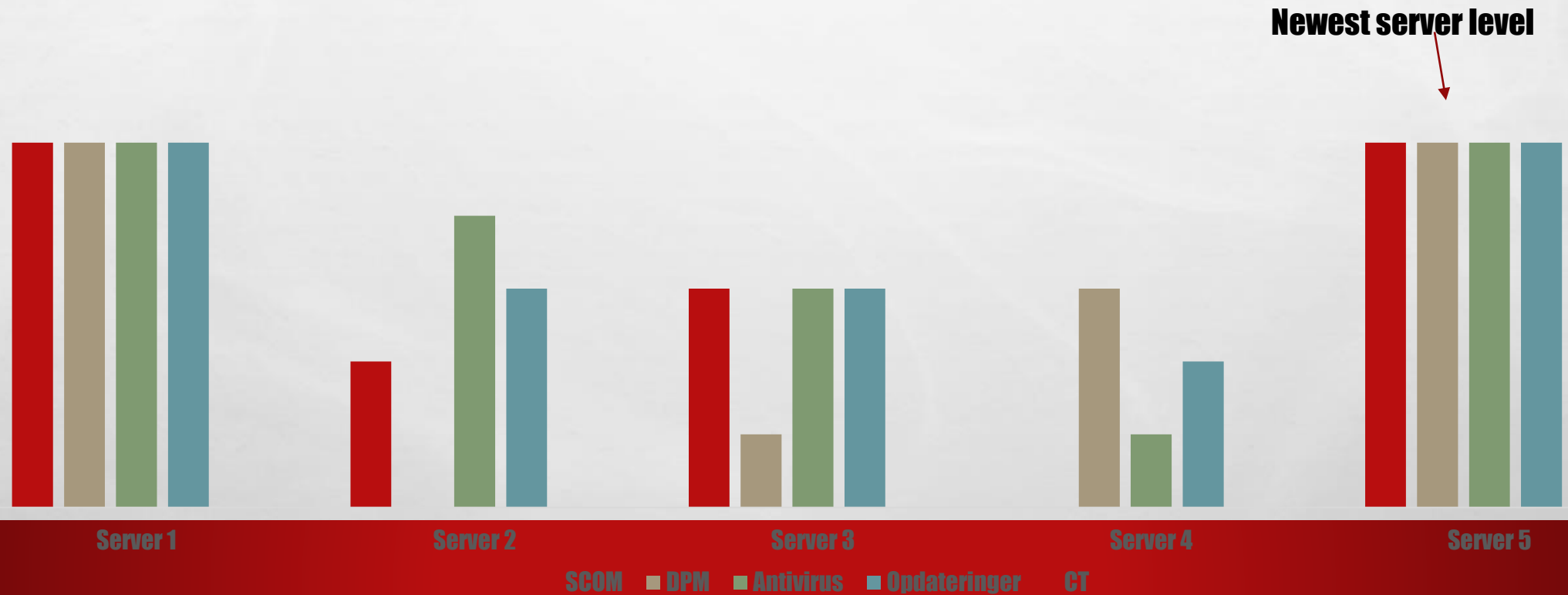
- **OPERATIVE SYSTEM...**
- **SCCM / MANAGEMENT**
- **SCOM / MONITORING**
- **DPM / BACKUP**
- **SYSTEM CENTER ENDPOINT PROTECTION**
- **SOFTWARE UPDATES**
- **SERVER TOOLS / DRIVERS**



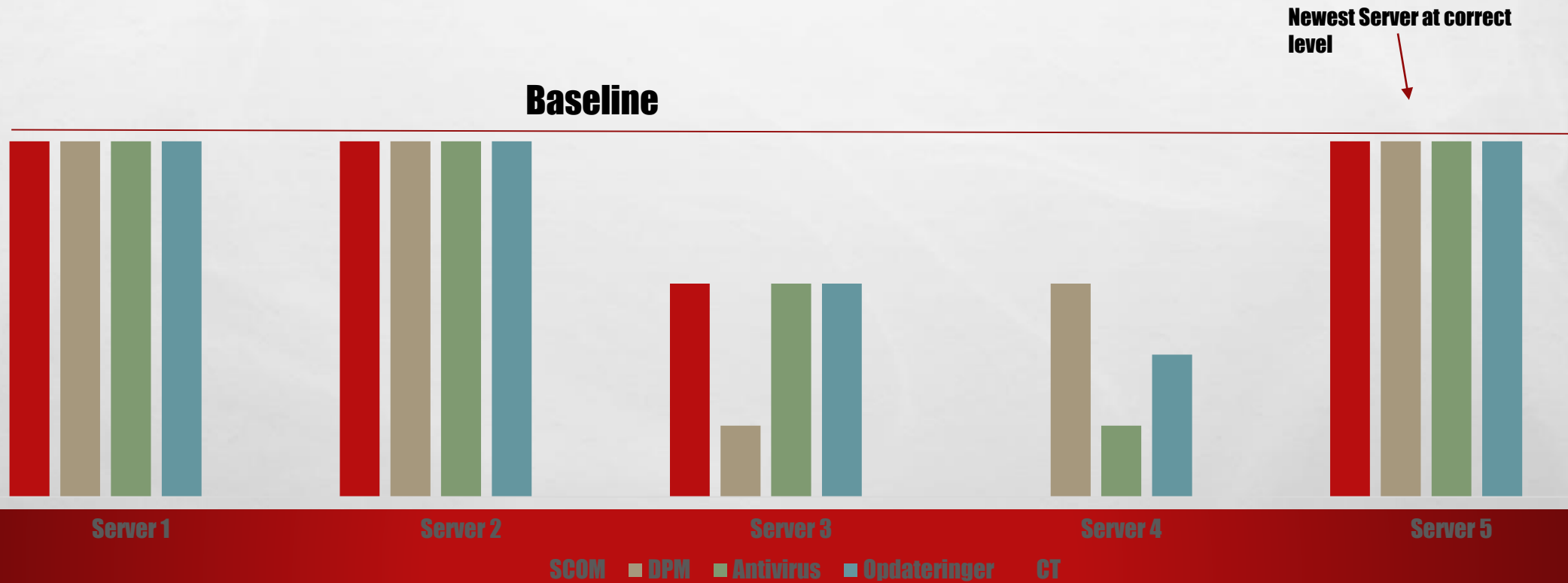
# IS OPERATIONS IN CONTROL TODAY?



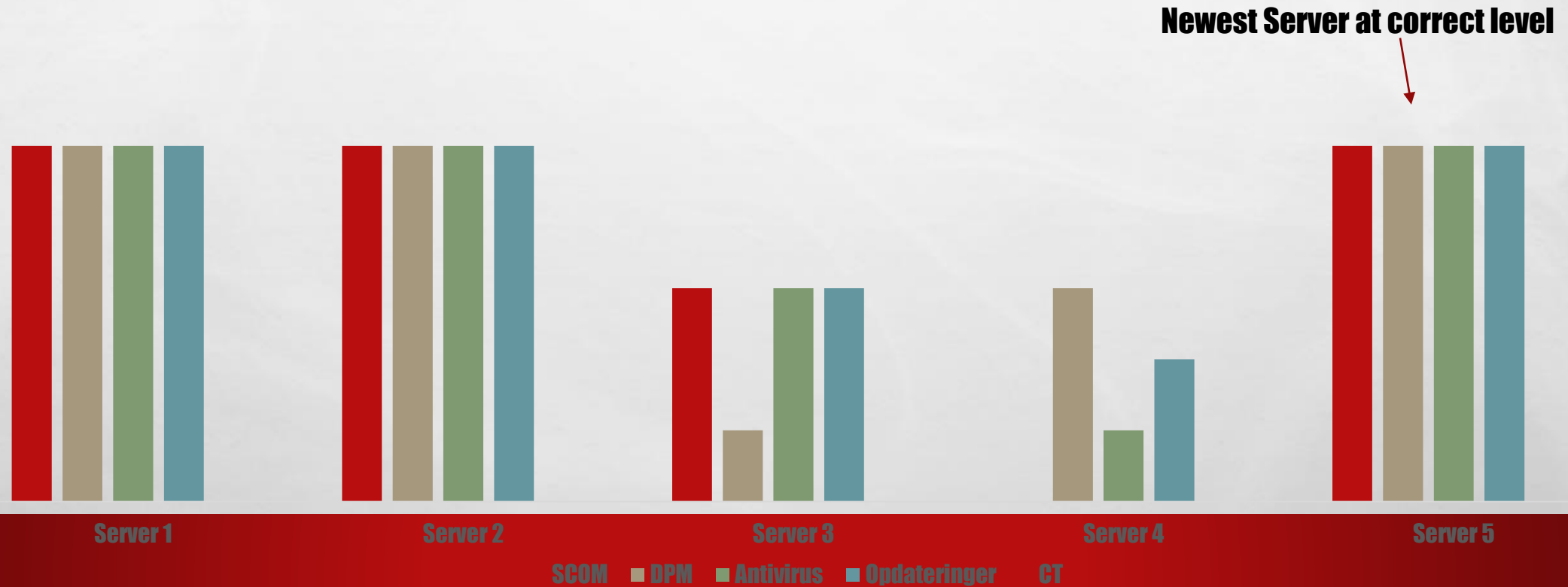
# RAISE THE LEVEL TO A BASELINE, SERVER BY SERVER



# RAISE LEVEL TO BASELINE - SERVER BY SERVER

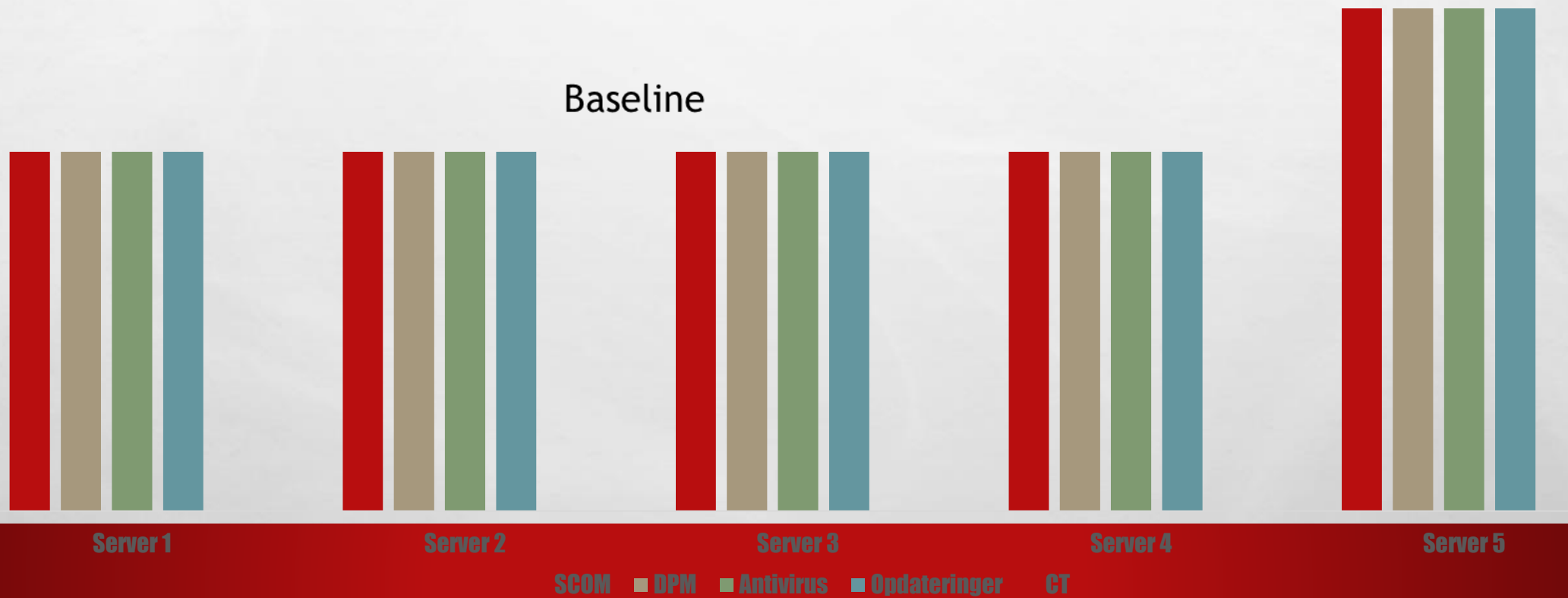


# RAISE THE LEVEL TO A BASELINE, SERVER BY SERVER





# ALL SERVERS AT A BASELINE LEVEL, BASELINE DEFINED



**DEMO**

**KENT AGERLUND**

# **CONFIGURATION MANAGER Q4 ROADMAP – DATACENTER MANAGEMENT**

- **CLUSTER AWARE MANAGEMENT**
  - **INTELLIGENCE IN TARGETING, SCHEDULING, AND MAINTENANCE WINDOWS WITH NODE STATE AWARENESS**
- **INVESTIGATING DSC INTEGRATION– CALL FOR FEEDBACK**
- **CONFIGMGR CLIENT DEPLOYMENT IN-CONSOLE MONITORING**
  - **HELPS IDENTIFY THE STATUS OF YOUR CLIENT DEPLOYMENTS, WHICH IS SUPER IMPORTANT ON SERVERS TO KNOW WHEN YOU'RE READY TO START DEPLOYING SERVER-MANAGEMENT SERVICES**

# Weitere Infos



## DIGICOMP KURSE NEU

[HTTPS://WWW.MICROSOFT.COM/LEARNING/EN-US/COURSE.ASPX?ID=20695A&LOCALE=EN-US](https://www.microsoft.com/learning/en-us/course.aspx?id=20695a&locale=en-us)

[HTTPS://WWW.MICROSOFT.COM/LEARNING/EN-US/COURSE.ASPX?ID=20696A&LOCALE=EN-US](https://www.microsoft.com/learning/en-us/course.aspx?id=20696a&locale=en-us)

# Danke



## HERZLICHEN DANK

MIRKO COLEMBERG @MIRKOCOLEMBERG @CONFIGMGR\_CH #CMCE\_CH

BLOG.COLEMBERG.CH

BEWERTUNG DER SESSION: [CONFIGMGR.CH](http://CONFIGMGR.CH)

- XING: [HTTPS://WWW.XING.COM/NET/CMCE](https://www.xing.com/net/cmce)
- FACEBOOK: [HTTPS://WWW.FACEBOOK.COM/GROUPS/411231535670608/](https://www.facebook.com/groups/411231535670608/)
- LINKEDIN: [HTTP://WWW.LINKEDIN.COM](http://www.linkedin.com)
- TWITTER: [HTTPS://TWITTER.COM/CONFIGMGR\\_CH](https://twitter.com/configmgr_ch)

NÄCHSTER EVENT: DONNERSTAG 29. OKTOBER DIGICOMP ZÜRICH