



How to cope with rapid release cycle of ConfigMgr

Community Day CMCE 1606
17 July 2016

- peter.daalmans@it-concern.nl
- <http://ref.ms/aboutme>
- <http://ConfigMgrBlog.com>



baseVISION

Peter Daalmans



Breda, Netherlands



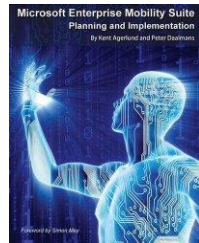
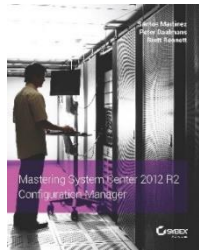
@pdaalmans



Sn. Technical
Consultant,
IT-Concern



Configmgrblog.com
ref.ms/aboutme



Agenda



- Updates and servicing
 - Why?
 - How?
 - Tips and tricks



Updates and Servicing



Why?

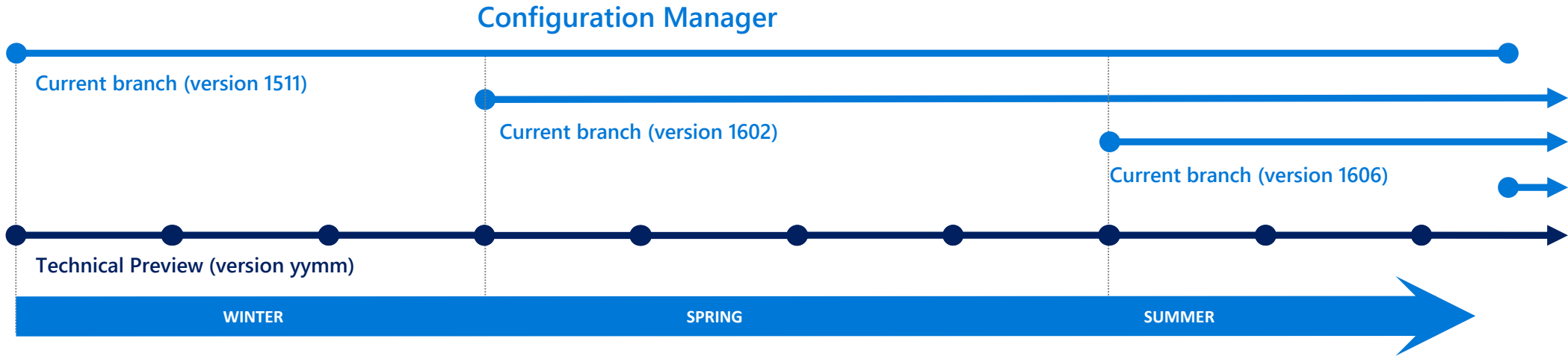


- ConfigMgr needs to keep up with Enterprise Mobility world.
- ConfigMgr needs to keep up with Windows 10.
- Customers don't want those big and complex upgrade projects anymore.
- Microsoft wants to be able to quickly respond to customers requests.
- The beast needs to be tamed.



Configuration Manager Current Branch

Product version	Release vehicle	Availability	Windows 10 features supported	Support	Windows Servicing Model supported
Configuration Manager	Current Branch	Generally available December 2015 with updates released periodically throughout the year	New features, security updates, and bug fixes	Can defer updates for up to 12 months before you must deploy updates to maintain support	Windows 10 Current Branch, Current Branch for Business, and Long Term Servicing Branch



Consolidating All ConfigMgr Updates



*No more
searching for the
updates*

No more
Cumulative
Updates

No more Service
Packs

No more
Microsoft Intune
Extensions

Less
Hotfixes



Types of Releases



Baseline

E.g. Configuration Manager 1511
Full setup (CD)
Will be upgradeable from 2012 R2
SP1/SP2
Supported for 1 year

In-Console Update

E.g. Configuration Manager 1602
Not a full setup, cumulative
Requires a baseline release
Supported for 1 year

Out-of-Band (OOB) Update

Will be released if needed
Mostly will contain only features

Hotfixes

Will be released if needed
GDR (General Distribution Release)
LDR (Limited Distribution Release)
Traditional



History of Releases



	Production Release (every 3-4 months)	Technical Preview Release (every month)	Date
Baseline (CD)		TP	May 2015
Baseline (CD)		TP2 (8271)	July 2015
Baseline (CD)		TP3 (8287)	August 2015
In-console Update (1st)		1509 (8299)	September 2015
In-console Update		1510 (8321)	October 2015
Baseline (CD)	1511 (8325)	TP4 (8325)	November 2015
In-console Update		1512 (8336)	December 2015
In-console Update		1601 (8347)	January 2016
In-console Update	1602 (8355)		February 2016
In-console Update		1602 (8360)	March 2016
In-console Update		1603 (8372)	March 2016
Baseline (CD)		TP5 (8385)	April 2016
In-console Update		1604 (8385)	April 2016
In-console Update		1605 (8396)	May 2016
In-console Update	1606 (????)	1606 (????)	June/July

History of Releases



	Production Release (every 3-4 months)	Technical Preview Release (every month)
Updates (OOB)	None yet (will be released if needed)	None (most cases Microsoft will not be releasing an update for preview builds)
Hotfix	1511 Traditional: KB3125905, KB3118485, KB3124274, KB3128090, KB3127032, KB3101706, KB3122677, KB3139572, KB3140781, KB3142341, KB3145401 1511 GDR: KB3122637 (Exchange Connector) 1602: KB3155482 (via servicing)	None (most cases Microsoft will not be releasing an hotfix for preview builds)



Recommended ConfigMgr Infrastructure



Technical Preview

ConfigMgr Preview Build

Standalone Primary
No hierarchy support
10 Clients
Update monthly
Test new features

Pre-Production

ConfigMgr Production Build

Replica of production site
(on the server side)
Appropriate number of
clients for testing purposes
Install updates here first

Production

ConfigMgr Production Build

Live environment





Demo Servicing node



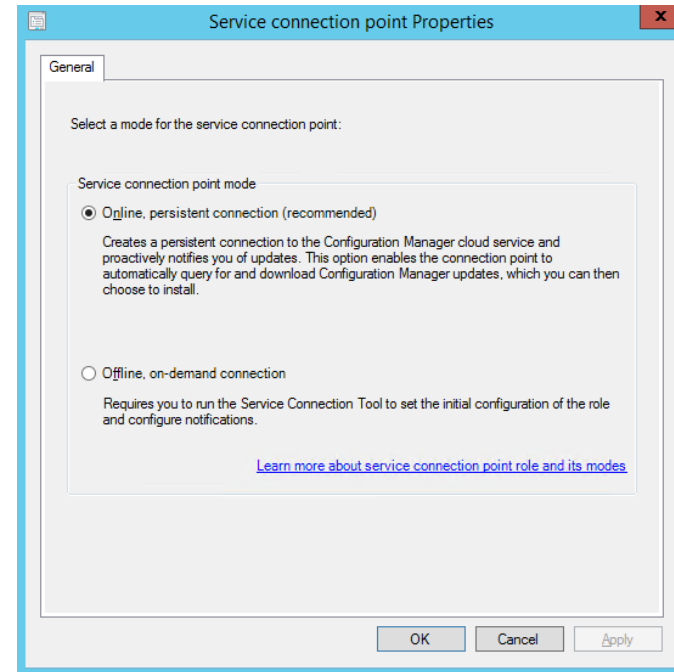
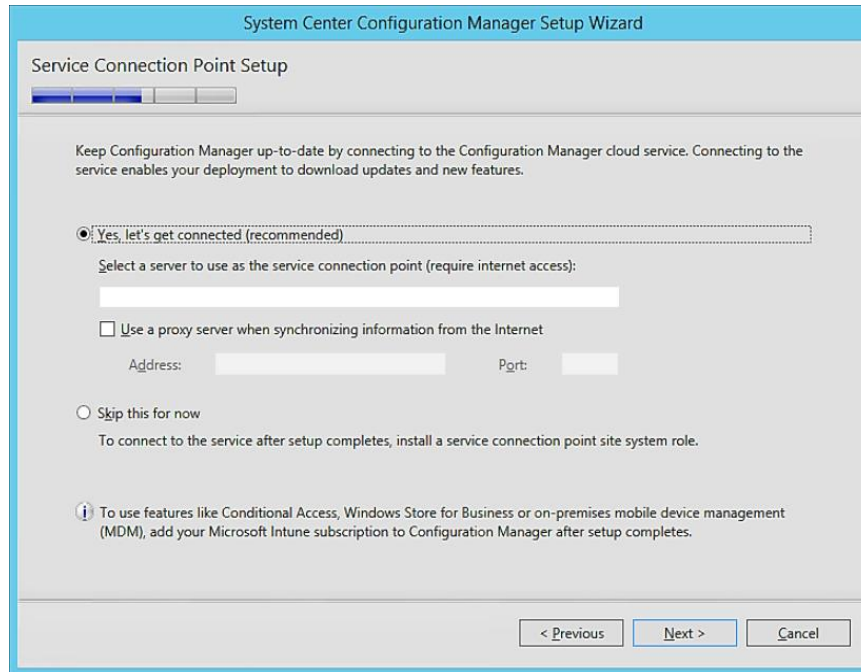
Service connection point



Service Connection Point



- Can be Online or Offline or Skipped (not recommended)



Requirements Servicing



System Center Configuration Manager 1511

Service Connection Point needs to be installed

Service Connection Point
=
Intune Connector role

Online mode

Offline mode

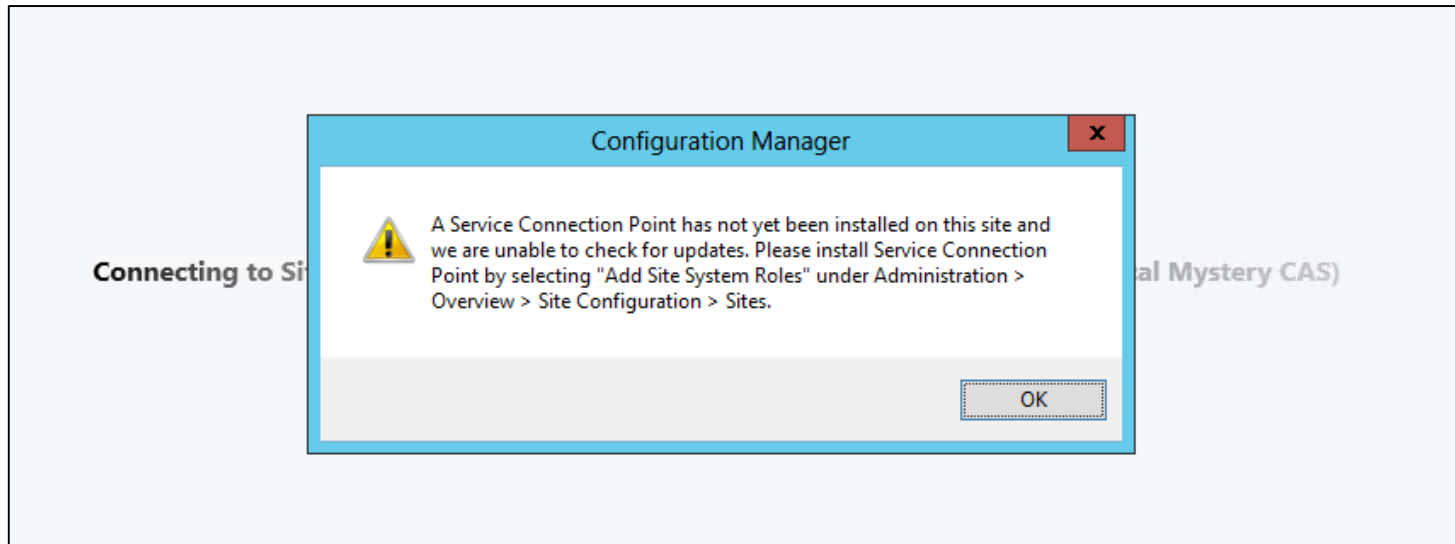
Hybrid customers (CM 2012+Intune)
do not need to install SCP



Service Connection Point



- Error will show if SCP is not installed
 - Error will only be shown at the top level site, during console start, to the admins with "SMS_Site modify" right



Offline Servicing



When the site server is not allowed to connect to the Internet

- Still need to install SCP role
- Set SCP to offline mode

Service Connection Tool must be used on Internet connected workstation

TIP: ServiceConnectionTool.exe needs to be copied together with all the other files in the directory when needs to be copied and run in another location
Recommended to have 2GB on media (if USB)



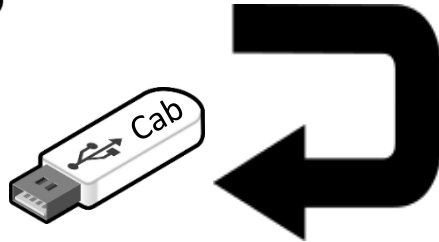
Service Connection Tool



1



ServiceConnectionTool.exe
-Prepare -usagedatadest
D:\USB\usagedata.cab

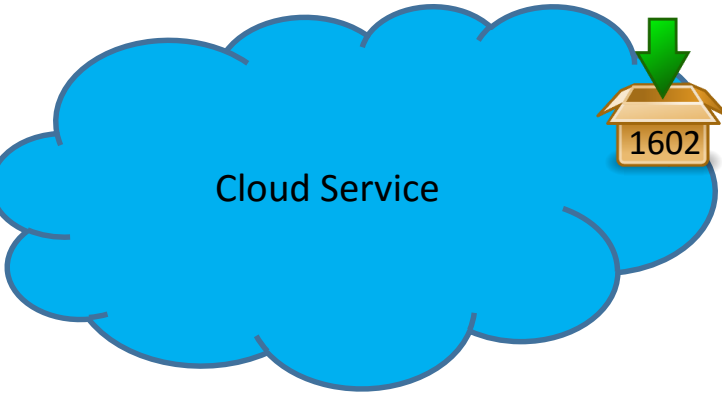


3

ServiceConnectionTool.exe
-import -updatepacksrc
D:\USB\UpdatePacks

Server with Service Connection Point
(no internet connection)

2



ServiceConnectionTool.exe **-Connect** -usagedatasrc
D:\USB\usagedata.cab -updatepackdest D:\USB\UpdatePacks

1602

Any machine with
internet connection





Demo servicing connection tool



Updating hierarchy / site systems



Updating Site Systems



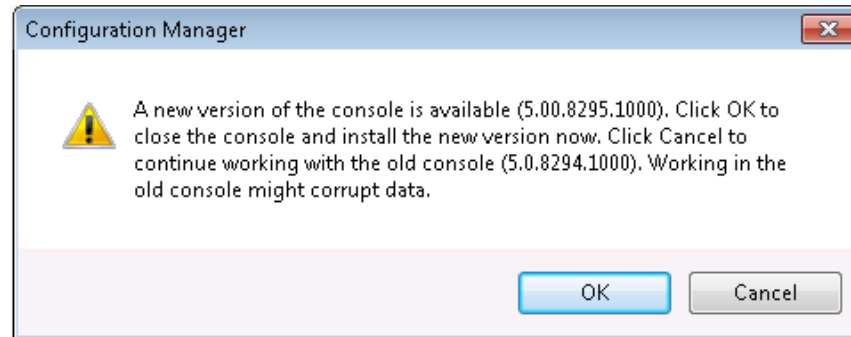
- CAS/Standalone Primary
 - Download automatic in **Online** mode
 - Download and import manually in **Offline** mode (using the Service Connection Tool)
 - For both modes, initiate install manually using the console
- Primary Sites
 - Download and install automatic but can be controlled specifying "Service Windows"
- Secondary Sites
 - Download and install is manual
- Distribution Points and all other site system roles
 - Download and install is automatic



Configuration Manager Consoles



- During initialization of the console there is detected if a server version is greater for auto upgrade
 - Can be ignored, but not recommended
 - If ignored, it continues the message is shown when using the console next time



- Issues may occur when using console on shared environment or when console is virtualized



Clients



- Allow admins to select a pre-production collection to test new client
- After testing, admins can choose to promote the new client bits to production
- TIP: Client upgrade won't start until the whole hierarchy is updated (including MPs, DPs, all server roles)





Demo: Hierarchy & Clients



Tips and tricks



Folders used by Updates and Servicing Feature



Service Connection Point Server

EasySetupPayload\<<PackageGuid>

This as package source for software distribution scenario



On every Site Server

<drive:>\SCCMContentLib\

CMUpdate use content library to distribute content to all primary site and CAS in a hierarchy

<CMInstallDir>\CMUStaging\
<PackageGuid>

Temporary folder used by CMUpdate service. To extract, validate and apply the content

<CMInstallDir>\CD.Latest

Used for site recovery once the update is applied **be sure to add it to your backup!!!**

<CMInstallDir>\StagingClient

For storing client binaries for piloting clients

<CMInstallDir>\CMUClient

Contains new client binaries. For environments where client and MP are co-located.

EasySetupPayload\<<PackageGuid>

This as package source for software distribution scenario

Log Files



If Download not showing

Dmpdownloader.log
Hman.log

During Download

Dmpdownloader.log
Hman.log
ConfigMgrSetup.log

Install

Hman.log
CmUpdate.log

Prerequisites

ConfigMgrPrereq.log

Replication

Distmgr.log
Sender.log (CAS)
Despool.log (Primary)

THINGS YOU MUST ABSOLUTELY AVOID DOING! ➔

- Do NOT manually clean up EasySetupPayload folder for CM update that is being downloaded/processed.
- Do NOT manually clean up CMUStaging folder.
- Do NOT restore CM database/CM site server in case of error hitting in CM Update (fix the issue and “retry installation”)
- Do NOT reinstall “Service Connection Point” if an update is in progress.
- Do NOT use 1602 bits in CD.Latest folder to install a standalone primary site.
- Do NOT use 1602 bits in CD.Latest folder to upgrade a 1511 site or R2 SP1 (or earlier) sites.
- Do NOT manually clean up any Cm_Update* tables.
- Do NOT restart CMUpdate service during installation.
- Do NOT keep the CMUStaging\<<Guid> folder open during installation.
- Do NOT copy files in CMUStaging folder.
- Do NOT restart smsexec during payload download (dmpdownloader.log shows if the package content is downloading) notifications can get lost in this scenario.



THINGS YOU MUST DO! 😊



- Get familiar with Technical Previews
- Get a pre production environment to test upgrades (/testdbupgrade)
- Define pilot client collection(s)
- Move to 1606(+) for full Windows 10 RS support
- Follow @djammmmer



Share your ideas



- Share your voice / ideas!
 - <http://microsoftintune.uservoice.com/>
 - <http://configurationmanager.uservoice.com/>



Questions





And good
luck in the



UEFA
EURO2016
FRANCE



Weitere infos



➤ Digicomp Kurse

- <https://www.microsoft.com/learning/en-us/course.aspx?ID=20695A&Locale=en-us>
- <https://www.microsoft.com/learning/en-us/course.aspx?ID=20696c&Locale=en-us>
- <https://www.microsoft.com/en-us/learning/course.aspx?cid=20398a&loc=en-us>
- <https://www.microsoft.com/en-us/learning/course.aspx?cid=20697-2&loc=en-us>



Danke



Herzlichen Dank

Bewertung der Session: [Configmgr.ch](https://www.configmgr.ch) / **RealStuff**
[azureems.ch](https://www.azureems.ch) **Informatik AG**

- Xing: <https://www.xing.com/net/cmce>
- Facebook: <https://www.facebook.com/groups/411231535670608/>
- LinkedIn: <http://www.linkedin.com>
- Twitter: https://twitter.com/configmgr_ch

baseVISION

DIGICOMP

Nächster Event: Freitag 7. Oktober Digicomp
Zürich