



DATASHEET

COMINO GRANDO SERVER

Ultimate multi-gpu solution for the bleeding edge hardware

Ultra-compact liquid-cooled GPU accelerated devices for AI, deep learning, inference, virtual production, rendering, password recovery and more

KEY ADVANTAGES



Best Multi-GPU performance for specialists, workgroups and research teams

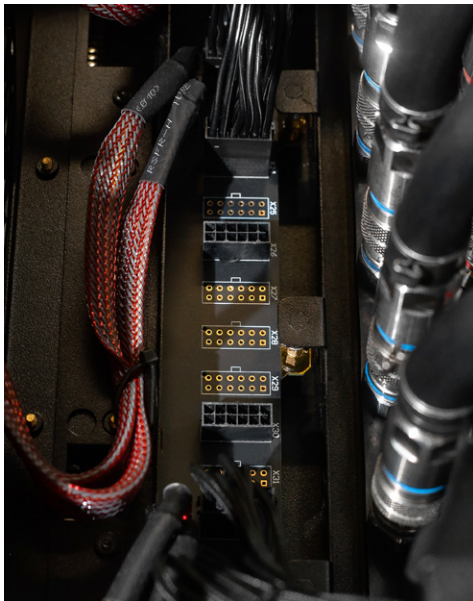
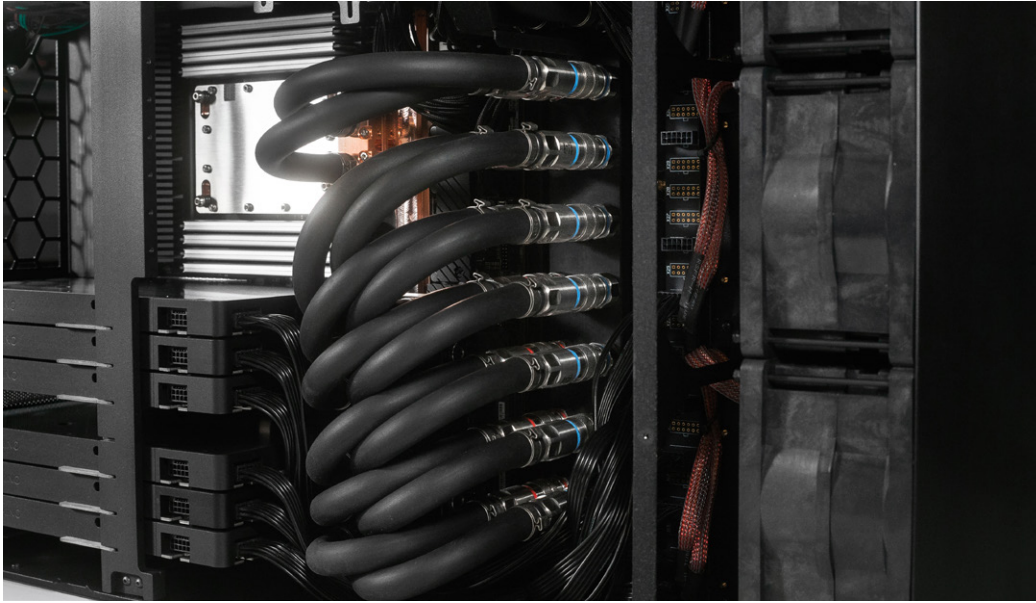


Data Center Performance Without the Data Center



Reliability, Scalability, Endurance!





- | Up to **7 GPUs & 2 CPUs**
- | Designed to be **used in a rack** or **put on a table**
- | **Redundant Power supply** system up to **4x 1600W** CRPS modules (operates up to 4+0, 3+1, 2+2).
- | **Power capacity up to 6.4kW**
- | 3x Ultra High Flow fans 6200RPM each (high noise level) or 3x 140mm 5000RPM (medium noise level)
- | **Cooling Capacity up to 4kW**
- | Optional installation of **up to 8 hot swap SSDs** (SATA or NVME)



LIQUID COOLED

Comino liquid cooling system unleashes the full performance potential of modern top-tier GPUs and CPUs, allows to prolong lifespan of the hardware and ensures 24/7 operation even in harsh environment with no thermal throttling.

QUICK-DISCONNECT COUPLINGS

Quick Disconnect Couplings (Comino TheQ) on each GPU and CPU allows to simplify maintaining and reduce maintenance time to increase system availability.

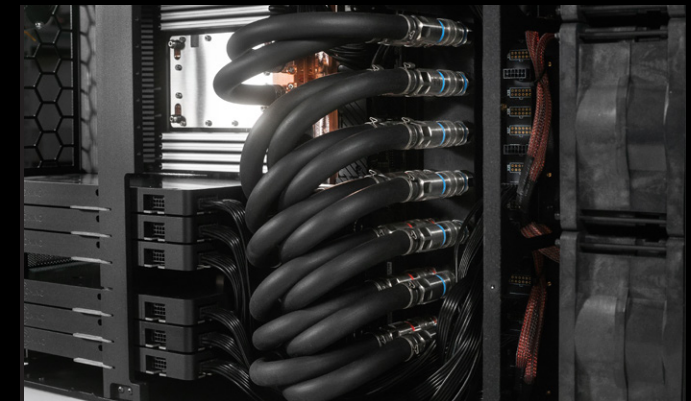
REMOTE MANAGEMENT

BMC chip to provide intelligence for its IPMI architecture for out-of-band management to enhance hardware-level control for improved IT efficiency.

COMINO'S MONITORING SYSTEM allows to collect cooling system log offline to analyze device usage history, log failure events and to monitor the temperature statistic. WEB based GUI allows to inspect several devices remotely. The monitoring system increases system availability.

COMMON REDUNDANT POWER SUPPLY (CRPS)

Designed for use in critical IT infrastructure. It provides reliable power for your system without limitation. PSU work at whole spectrum voltage 100-240VAC and 240VDC and provide N+M redundancy.



Maximum Cooling Capacity

4 000 W

Maximum cooling capacity is ensured @ 20C intake air T and "performance mode" of the cooling system

Motherboard

Up to EATX

GPUs

Up to 7

Processors

Up to 2

Sockets

Intel: LGA 4189, LGA 4677, LGA 1700

AMD: sWRX8, sTRX4, AM5, SP3, SP5

RAM

Up to 2TB, depending on the MB and the CPU

Storage

Up to 8 hot swap SSDs (SATA or NVME)

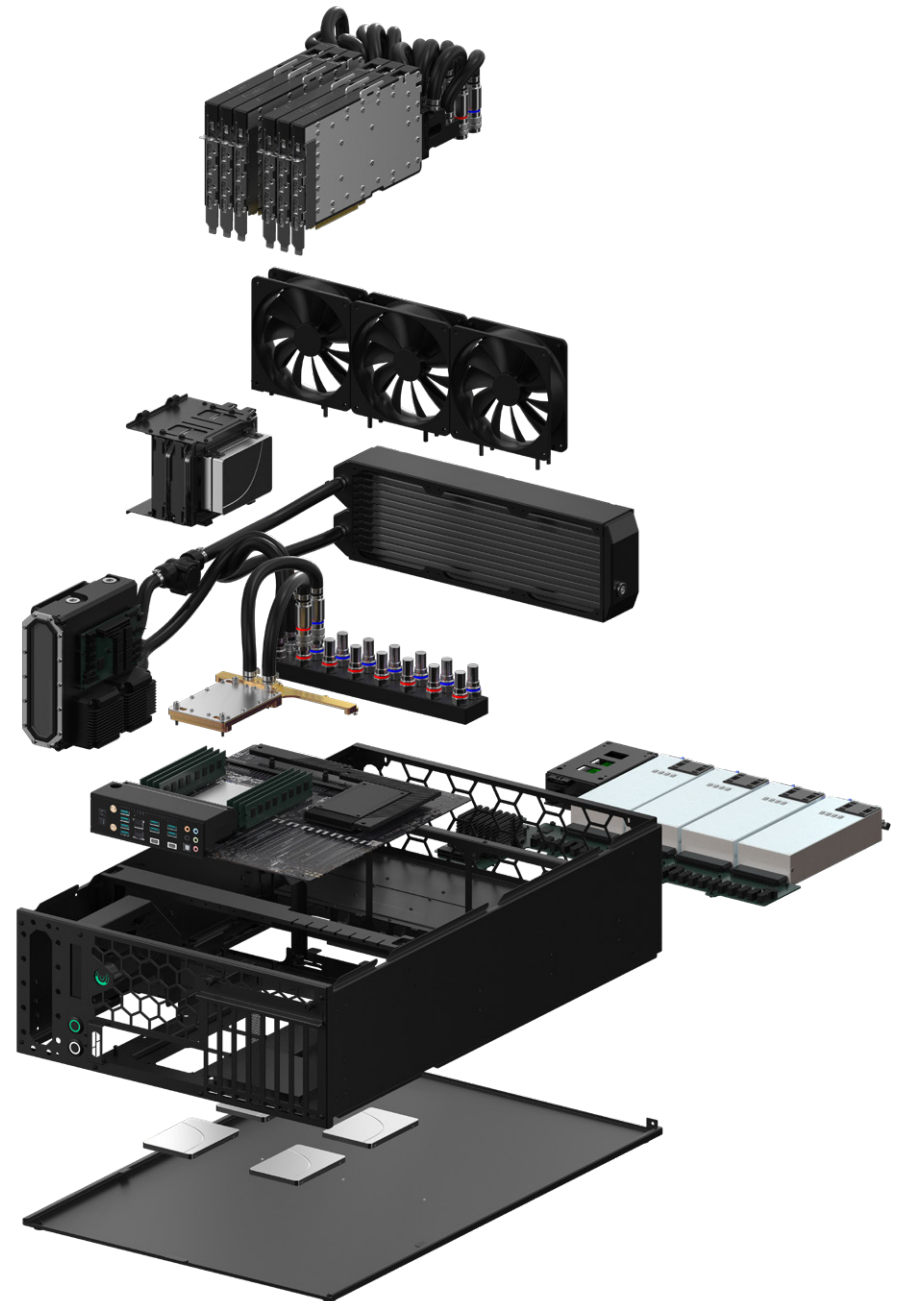
Up to 2 3.5" HDD

Up to 6 2.5" SSD

Cooling Capacity

4x 1600W CRPS modules (operates as: 4+0, 3+1, 2+2).

Power capacity up to 6.4kW



3x Ultra High Flow fans 6200RPM or 3x 140mm 5000RPM

Up to 2x 3.5" HDD

Cooling system controller

GPU*

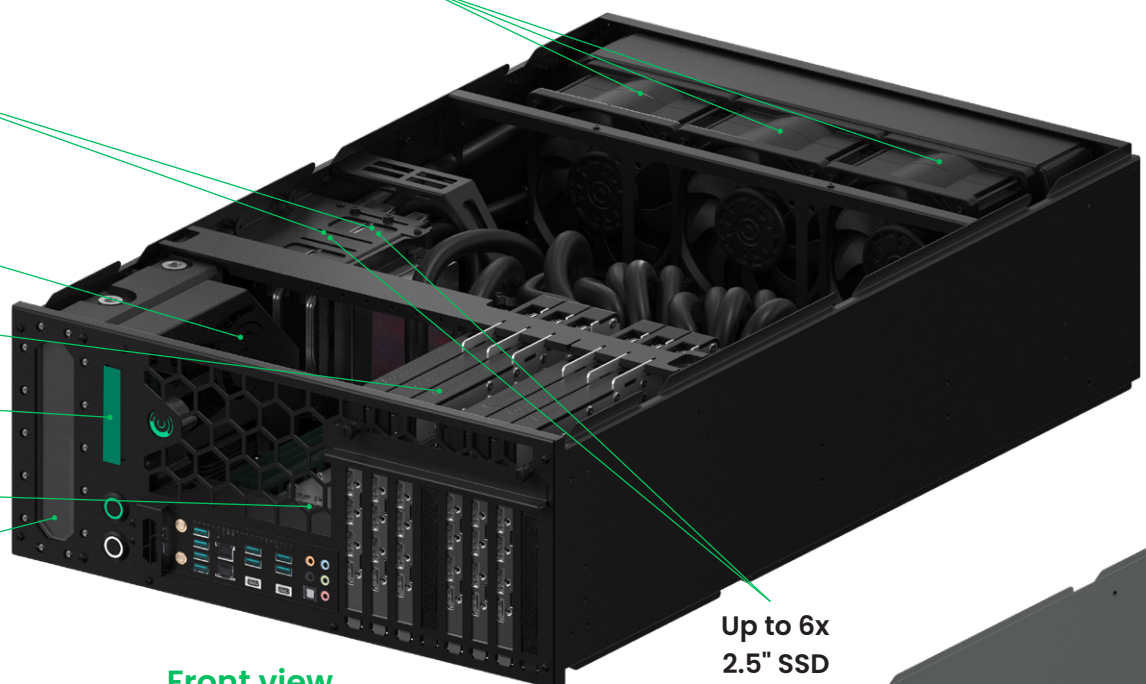
Display

CPU*

Reservoir

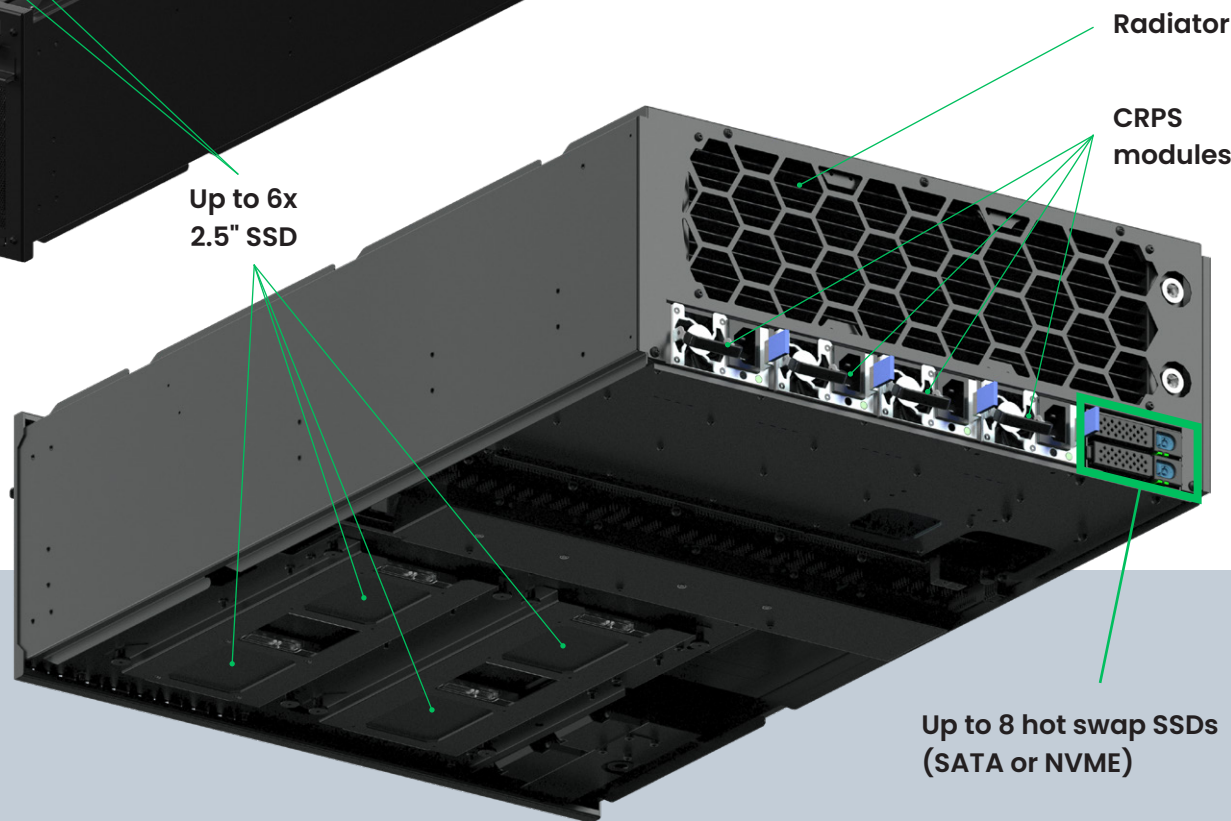
*Different configurations available

Front view



Up to 6x 2.5" SSD

Back view



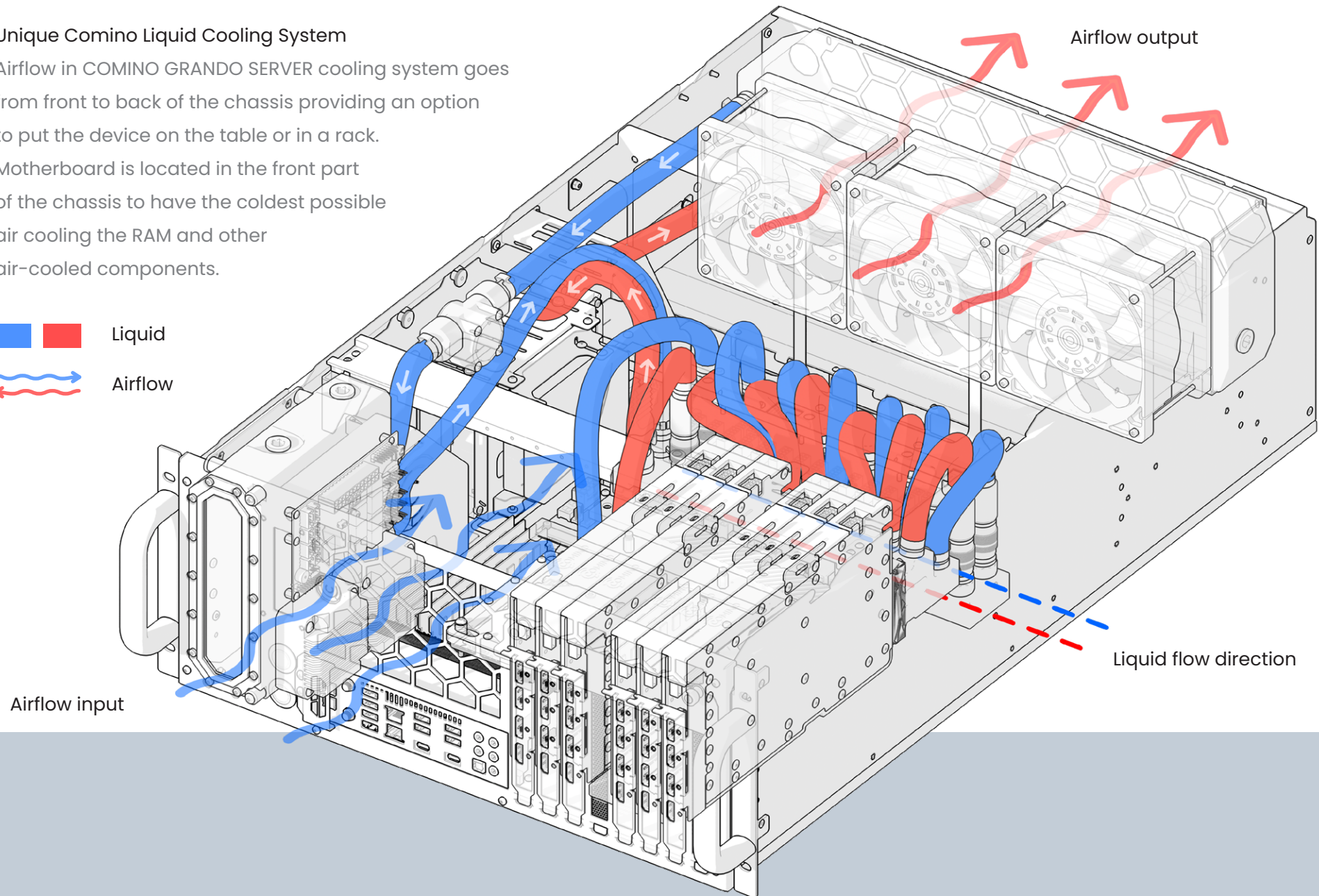
Radiator

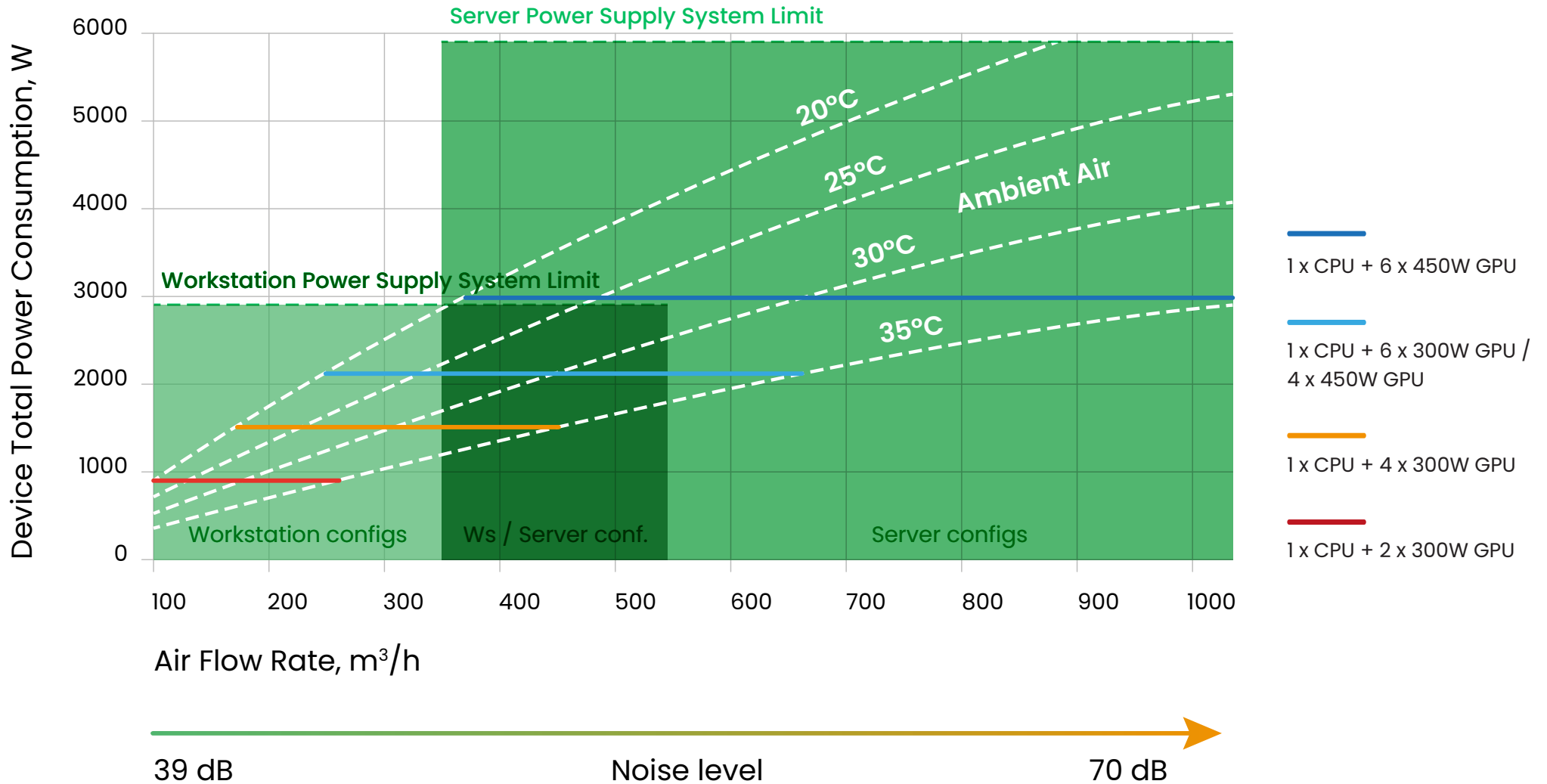
CRPS modules

Up to 8 hot swap SSDs (SATA or NVME)

Unique Comino Liquid Cooling System

Airflow in COMINO GRANDO SERVER cooling system goes from front to back of the chassis providing an option to put the device on the table or in a rack. Motherboard is located in the front part of the chassis to have the coldest possible air cooling the RAM and other air-cooled components.





up to 300W

- A100 40Gb (250W)
- A100 80GB (300W)
- RTX A6000 (300W)
- RTX 6000 Ada (300W)

up to 350W

- 3080 (320W)
- 3090 (350W)
- H100 80Gb (350W)

up to 450W

- 3090 Ti (450W)
- 4090 (450W)

Consumer Grade

- Intel Core-i9 13th Gen
- AMD Ryzen 7000 Series

Workstation

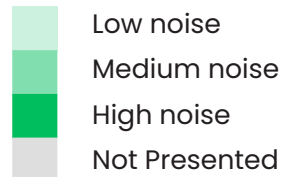
- Intel Xeon-W 2400
- Intel Xeon-W 3400
- AMD Threadripper 3000X
- AMD Threadripper PRO 3000WX
- AMD Threadripper PRO 5000WX

Server

- Intel Xeon Scalable 3rd Gen
- Intel Xeon Scalable 4th Gen
- AMD EPYC 7003
- AMD EPYC 9004



Comino Grando Workstation
 Comino Grando Workstation/Server
 Comino Grando Server



* In x6 GPU configurations PCIe will work as x8, not x16

Motherboards	Up to EATX
RAM	Up to 2TB, depending on the MB and the CPU
M2 drives	Up to 8x NVME
2.5" drives	Up to 14
3.5" drives	Up to 2
PSU	Up to 4x 1600W CRPS
PSU operating voltage	110/220V
Cooling Capacity	4kW
Noise level	39dB - 70dB
Lan	Up to 2x 10 Gbit/s on the MoBo and up to 400Gbit/s in PCIe
OS	Ubuntu / Win10 (Pro/Home) / Windows Server

Liquid cooling	CPU with VRM and GPU with DDR and VRM
Reservoir	Comino custom 450ml with integrated pumps
Pumps	2x 18W
Radiators	1x 360mm core
Fans	3x Ultra High Flow fans 6200RPM each (high noise level) or 3x 140mm 5000RPM (medium noise level)
Installation	19" rack-mountable or standalone as a Workstation
Required rack space	4U
Dimensions (without rack-mounting handles)	442 x 690 x 177mm
Weight	Comino Grando Server with 4x CRPS and 6 GPUs – 44kg (net), 70kg (gross)
Operating & storage temperature range	Storage: -5..50° Operating: 3..38°C



For more product information visit:

www.comino.com
grando.ai

Email us: info@comino.com

COMINO HOLDING LTD

30 Churchill Pl, London, England, E14 5RE

+44 203 670 9833

Manufacture Address

Krimuldas iela 2A, LV-1039, Riga, Latvia

GET SOCIAL

 [@cominotech](#)

 [@cominotech](#)

 [@cominotech](#)