



- 2021 generation of hardware
- 3 parallel imaging sessions
- damaged drive support

3 imaging sessions at up to 500 MB/s (30 GB/min) each using server-grade motherboard & CPU, ECC RAM.

6 Source ports with built-in write blocker:

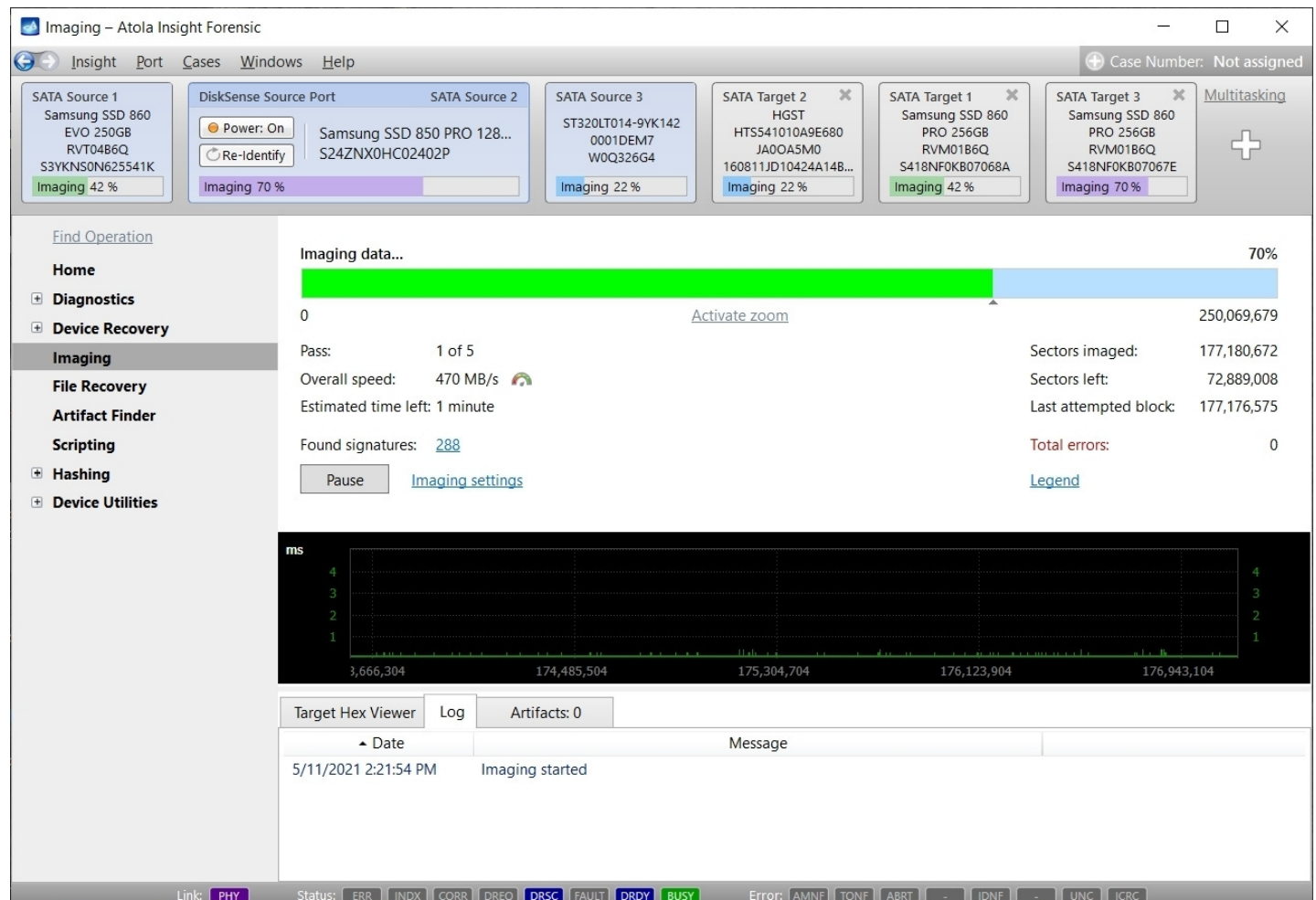
- 3 SATA
- USB 3.1
- IDE
- Extension (SAS, PCIe, Apple PCIe SSD, M.2 NVMe/PCIe/SATA SSD, Thunderbolt 2 & 3, FIREWIRE)

4 Target ports:

- 3 SATA
- USB 3.1

Ethernet: 2x 10 Gbit ports

Imaging to/from files (E01, RAW, AFF4) located on a server or the host computer that runs Insight software.



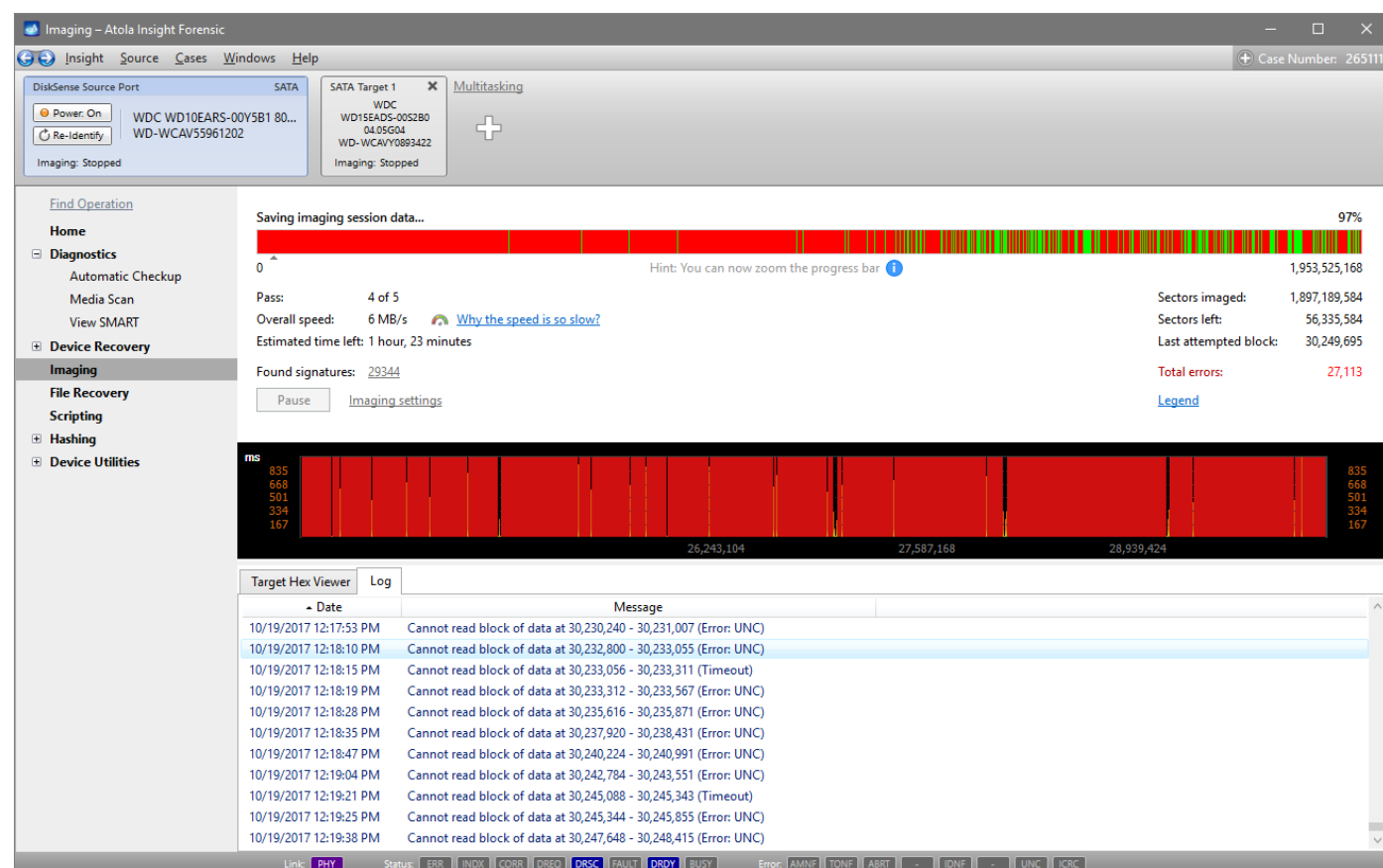
The screenshot shows the Atola Insight Forensic software interface. The top bar includes navigation tabs: Insight, Port, Cases, Windows, and Help. A 'Case Number' field is set to 'Not assigned'. Below the navigation bar, there are six panels for source and target drives, each showing its name, model, and imaging progress. The 'Imaging' panel is selected in the left sidebar. The main area displays 'Imaging data...' with a progress bar at 70%. Below the progress bar, it shows 'Pass: 1 of 5', 'Overall speed: 470 MB/s', and 'Estimated time left: 1 minute'. A 'Found signatures: 288' is also displayed. The bottom section features a 'Target Hex Viewer' with a log of events, including '5/11/2021 2:21:54 PM Imaging started'. The status bar at the bottom shows various indicators like 'Link: PHY', 'Status: ERR, INDX, CORR, DREQ, DRSC, FAULT, DRDY, BUSY', and 'Error: AMNF, TONF, ABRT, IDNF, UNC, ICRC'.

Damaged drive support

Atola Insight Forensic offers complex data retrieval functions with utilities to access drives at the lowest level. It makes it possible to image drives with surface scratches, firmware issues, logical errors, worn-out magnetic layer, etc. All in a forensically sound manner.

The imaging algorithms handle damaged media automatically, yet in a measured manner to avoid causing further damage, while retrieving as much data as possible:

- in-depth drive diagnostics
- multi-pass imaging system
- selective head imaging
- imaging of freezing drives
- overcurrent, short-circuit protection
- segmented hashing for image verification



Other features

- Pause/resume of imaging
- Target drive encryption (VeraCrypt)
- Extraction of unknown ATA Passwords
- HPA & DCO hidden area detection and reset
- Hash calculation: MD5, SHA1, SHA256, SHA512
- Wiping: NIST800-88, DoD 5220.22-M, Secure Erase, etc.
- Case management system: automatic report generation
- File recovery
- Scripting
- Artifact finder: credit card & phone numbers, emails, GPS coordinates, IP & MAC addresses, URLs, keywords, regular expressions)
- Disk Editor, media recovery, compare devices & other utilities

Subscription includes

- Support from our engineers
- Regular software updates with new features
- Lifetime warranty