



Your First Choice in Cloud Security

EcoStruxure Access Expert

se.com

Life Is On



EcoStruxure Access Expert

Our customers environments are in a constant state of change and with so much focus on doing more with less and mobility, a more modern way to protect your building occupants and assets is needed.

EcoStruxure Access Expert, an Enterprise Cloud based solution, brings together historically disparate system into a holistically integration solution that supports customers' needs to be connected and in control while on the move. EcoStruxure Access Expert brings your building's security infrastructure and management systems into an intuitive and easy to use platform that enables faster, more efficient, and potentially life-saving decision making.

Leading the charge with the latest in Cloud technologies and open hardware, EcoStruxure Access Expert delivers a continuous evolution through monthly updates and helps to mitigate both physical and cyber security risks. The ability to easily integrate to third party security, data and building systems is a key benefit associated with Access Expert

EcoStruxure Access Expert makes your day-to-day operations easier thus providing peace of mind that your facilities, employees and customers safe and secured.

Why

Secure workplaces are paramount to enhancing occupant productivity and safety.

How

Scalable, standards-based cloud access control solution that is simple to configure enables fast and on-time project execution.

What

Access Expert is an easy-to-use platform with strong integration capabilities with other critical building systems.



The Right Solution for Today's Connected Buildings



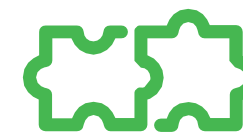
Hyper efficient

Gain hyper-efficiency through end-to-end digital architecture. With Access Expert you can modernize your existing access control infrastructure and migrate it to the Cloud



Scalable and Resilient

Make your buildings less vulnerable to natural and man-made threats. With the ability to manage multiple sites with one cybersecure platform, Access Expert protects facilities and helps to ensure business continuity.



Flexible and Interconnected

Bring your entire building security infrastructure together using standard industry protocols, open hardware, RESTful API and an extensive library of integrations. Access Expert is ready for to transform your security operations while helping to reduce OPEX and CAPEX.



Human Centric

Mobility enablement realized for those that are on the move. PC, Web, Mobile Apps, Access Expert makes managing your security environment easy regardless of where you are.



User Journey

Access Expert provides users....

Productivity

- Supports your need to for **accessibility while on the go**
- Provides the **right information at the right time**
- **Simplifies your security operation** through an easy to use and intuitive platform
- Keeps you informed with **real time alarms and automatically generated reports.**

Simplicity

- Ensures **cyber security and data privacy requirements** are met
- Merges disparate systems to a **single network** through integration enablement
- **Reduces operational costs** by as much as 30% through simplicity of deployment

Service Excellence

- **Remote accessibility** enables **quick troubleshooting and problem solving**
- **Customized notifications** help target service requests and problem areas
- **Endless scalability resources** mean you can **grow as fast as needed**





The Best Solution For You

System Integrators

System Integrators are faced with several challenges as they engage the market:

Strong pricing pressure and a market saturated with competition. When labor and installation costs can be the make or break in a winning bid, it is imperative they can complete their work as quick as possible with no defects.

New Customers are looking for new technology which puts pressure on System Integrators to always be on the lookout for the latest and greatest and remain trained.

They must support their existing customer base through evolving product lifecycles and an industry that is advancing at the speed of light.

Access Expert is the best choice for Integrators. From leveraging the latest in Cloud services, incorporating the features of Legacy systems in the most modern environment to delivering on unique features that benefit their teams as well as their customers, Access Expert is the right Solution to help grow your business.

Facility and Security Managers

Facility and Security Managers face are constantly on the move and always need the support of their technology systems. From demands like Tenant satisfaction, providing a safe and secure environment and the need for reporting and compliances, Facility and Security managers have a daunting day-to-day task and are always looking for ways to improve.

Access Expert is the best choice for Facility and Security Managers that need the power of their systems to always be accessible and at their fingertip. Access Experts automated reports, automatic updates and Scheduled Tasks make it the right choice and help drive operational efficiencies and cost savings through the organization.

IT Managers

With the merging of Physical and digital security, today's IT Managers not only have to ensure the viability of the organizations network but are tasked with protecting that network from Cyber Security threats which means constantly ensuring their systems are up to date and secured.

Access Expert is the best choice for IT Managers concerned with physical and cyber security, interconnectivity, and scalability. Regular Cyber scans, the latest in Encryption and Continuous Improvements make Access Expert the right choice and result in less time spent worrying about system security and system connectivity.

The Power of Cloud

The Cloud is widely viewed as transforming the world as we know it. With virtually endless computing resources, un-rivaled computing power and its ability to simplify our day-to-day operations, the Cloud delivers endless business value.

Today's Customers are expecting more from their systems and have a need for immediate scalability, improved Cybersecurity, and quick deployments. By leveraging the benefits offered by Amazon Web Services, Access Expert exceeds customer expectations in these areas and more.

Immediate Scalability – Leveraging AWS Load Balancers, Access Expert automatically increases resources as needed to ensure customers maintain a consistent level of system performance no matter how many devices they have online or how many operators are concurrently accessing the systems.

Improved Cybersecurity – Keeping your facilities secured means more than controlling the doors and entry points. Today's security environment includes the applications and services. Access Expert leverages the resources of AWS to remain informed and to positively position its customers to be the most current and up to date. Access Expert goes through a series of Cyber scans weekly helping to ensure it maintains a positive position when it comes to Cybersecurity.

Quick Deployments – Time is money and the faster you can complete a project the better for yourself and your customers. Access Expert leverages the power of the Cloud meaning no servers to commission, setup or even maintain which results in hours saved and real savings by not having to buy and sustain additional equipment.

Unparalleled Serviceability – Support and service no longer requires the use of VPN connections, remote connections or in some cases even coming to the site. Access Expert enables remote support through the same secured connection not only for your teams but your system integrators as well.



The Best Solution For Today's Connected Buildings

Reduced Operating Costs

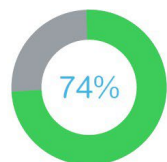
The hosted application and database reside in a secured cloud environment with redundancy second to none. For today's integrated buildings, this means less cost, less to maintain and improved support. The integration, wireless, and cloud capabilities of Access Expert combine for a highly efficient cost footprint, upfront and ongoing. The familiar, intuitive user interface reduces personnel training costs while off-the-shelf devices and universal protocols simplify support and maintenance.

Experience Beyond Open Systems

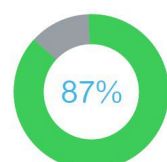
One of the industry's most innovative and open solutions, Access Expert incorporates the flexibility of non-proprietary hardware, the standard communications of BACnet and Web Services and the global history of Schneider Electric and industry leading open solutions. Utilizing a full RESTFUL API and Web Services, Access Expert simplifies integrations and reduces development cost. Access Expert brings together disparate security systems such as access control, intrusion detection, mass messaging, and video surveillance into an easy-to-use interface. Furthermore, AccessXpert enables simplified integration with building management systems fostering new possibilities for enhanced security and efficiency as well as enabling greater energy savings.

Increased Flexibility and Mobility Enabled

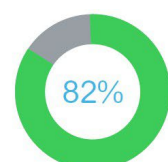
Mobile applications get your security operations team out of the command center and allow them to be visible and present throughout your business. From a smart device or laptop, your team can make clear, informed decisions to more effectively secure your enterprise.



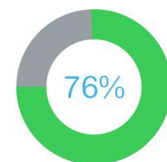
74%
of utilities indicated that a public cloud is their dominant platform strategy for IT.



87%
valued cloud services for better business continuity and disaster recovery.



82%
considered cost of ownership the most important consideration for choosing a cloud service.



76%
said cloud providers can offer better cybersecurity than their own IT security team.

1. Security in the Cloud, Morar Consulting, sponsored by Schneider Electric
2. <http://www.continuitycentral.com/index.php/news/technology/266-news7575%0A>



Why Access Expert

Delivering on efficiency and security, you can rest assured that Access Expert is the right choice for your Building of the Future.

Flexible Operation – Gone are the days of expecting customer to gain access to systems through specific, dedicated or unique workstations. This should include user interaction as well as administrator interaction.

Optimized for the Cloud – Our approach to your system will result in a lower overall cost of ownership for the life of the system which includes. Operating in the Cloud brings additional benefits such as High Availability, Redundancy and automatic updates and backups without additional servers or software.

Reduced operating cost – Eliminating the costly onsite servers, removing the need to perform server updates and maintenance, combined with a highly efficient cost footprint, upfront and ongoing. Access Expert delivers high performance without the high cost.

Unlimited – Unlimited Concurrent Operators included from day one including the Windows Application, WebClient and Mobile Application. Access Expert easily grows as your team grows but without added costs.

Open protocol support – Leveraging Open protocols to enable integration with other systems to communicate in times of crisis.

HR Database Integration – Automatically add and delete card holders as they are brought into or out of the organization to eliminate the need for double entry and secondary database management.

Continuous Improvements – Access Expert delivers monthly updates ensuring your system is current, up to date. With new features and the latest in Cyber Security, Access Expert never leaves you behind.

Merge physical and cyber security – The secure structure in Access Expert meets stringent security requirements and government regulation, so only authorized personnel access your security system. Encryption and authentication protect communications between controllers and workstations.

Not ala carte software – Access Expert is delivered with the most popular features and functions that customers are looking for. Licensing is simple and straightforward. As your business grows, so can Access Expert.

Automatic – Helping your customers stay focused on their day-to-day business, Access Expert simplifies the total ownership of your system by delivering Automatic Updates and Automatic Backups.

Increased flexibility and mobility – Mobile applications get your security operations team out of the command center and allow them to be visible and present throughout your business. From a smart device or laptop, your team can make clear, informed decisions to more effectively security your environment.





Cyber Security

The Philosophy

Schneider Electric approaches data and system security as well as data accessibility in a multi-layered design philosophy. Microsoft's SD3+C is a key foundation of the philosophy. What is SD3+C?

Secure by Design

Secure by Default

Secure in Development

Secure in Communication

Access Expert has been designed from the ground up to be a Cloud based product and that dictates software security is paramount.

Secured Communications – Access Expert protects the transmission of data between the client and the cloud-based server using modern TLS 1.2 encryption. This same technology is used to secure credit card information, social security numbers, and login credentials. TLS 1.2 is essentially the next step in the evolution of encryption and has replaced SSL.

Data Security – All data in transit (moving from or to AWS) is protected by TLS 1.2 encryption while data at rest (once the data reaches AWS' servers) is protected with server-side encryption (SSE).

Secure by Default – An often-over-looked security vulnerability is default passwords. Many systems contain them and most never get changed. A quick internet search for "default passwords" under a specific product will turn up the factory default, which also means that a perpetrator looking to get into the system will do the same. Access Expert uses no default usernames and/or passwords. Each system is issued with a unique password. This is really the first step in designing with both human nature in mind and our secure by design philosophy.

Accessibility – Roles-based rights provide users access to specific areas of the software based on login permissions set by the administrator to accomplish the tasks assigned to that user. Customers can opt to enhance system accessibility security by enabling one of the included 2-Form Authentication options or deploying the optional Single Sign On.

No Database Accessibility – There is ZERO access to the database. All activity related to the database must pass through the Access Expert RESTful API. The MongoDB resides on its replica sets behind AWS' firewalls in an encrypted state.

VERACODE

Software

EcoStruxure Access Expert AXH-V3BASIC, AXH-V3PREMIUM, AXH-V3ENT



EcoStruxure Access Expert is a cutting-edge Cloud based integrated access control and security solution that brings together the advancements today's customers demand with the features legacy customers expect. Transcending the traditional security market, Access Experts integration reaches beyond just security by incorporating building automation that help ensure your occupants are Safe, Secure and Comfortable. Designed around the end user's needs, the intuitive and user-friendly interface helps you quickly get to the information you need.



Integrated Cloud Solution: Leveraging the latest in Cloud Services, Access Expert brings together access control, intrusion detection, video management, visitor management and other historically 3rd party platforms into an easy-to-use integrated offering that not only saves time and money but also helps to improve occupant comfort through building automation integration. The features Access Expert delivers include countless unique differentiators that help it stand out in a crowded market.

Flexible System Architecture: Gone are the days of local servers and server updates. Access Expert delivers endless operational scaling that self deploys as needed regardless of the number of sites, controllers, doors or events.

Mobility Enabled: Customers spend more time on the move than in their offices so embracing the power of the web and mobile applications is a must. Access Expert puts the power of control at your fingertips through a robust Windows Application, flexible web application and powerful mobile app.

Mass Messaging: Stay connected to your employees, contractors, visitors and staff at all times through the use of Access Experts native Mass Messaging system. Communicate to one person, everyone, or anything between with a click of a button.

Configurable Lockdown: No two buildings operate the same and your ability to secure your environment in times of crisis should not be rigid. Access Expert delivers multiple configurable approaches to locking down your facilities as you need.

Easy to Operate: Access Expert was designed with the end user in mind. Ease to navigate pages and right click functionality make Access Expert the most intuitive system available. The Windows Application reduces operational burdens through a self-installation process.

Comprehensive Reporting: The information you need has never been more accessible. With a comprehensive built-in reports tool and the ability to create uniquely defined custom reports, Access Expert offers a commanding range of reporting capabilities, including scheduling reports to be generated automatically and sent to defined users via email.

Beyond Open: One of the industry's most innovative and open solutions, Access Expert incorporates the flexibility of Open field hardware, support for BACnet, Webhooks and utilizes a full RESTFUL API to enable integrations with 3rd Party systems including Building Intelligence systems.

Integrations: Out of the box, Access Expert supports a wide variety of integrations to 3rd Party systems. From Wireless Locks, Intrusion Detection, Intercoms, Building Management, Room Reservation Systems, Visitor Management and Video Management Systems, Access Expert helps your teams bridge the gap and delivers interconnect ability like no other.

NEW

Enhanced Control: Robust support for bi-directional integration with several industry leading 3rd party platforms.

Licensing

Software Licensing Structure

1) Hosted Instance	2) System Expansion	3) 3 rd Party Integrations
The starting point for any Access Expert system. There are 4 options to consider with each being packed with much of what you need.	Expand as needed and only pay for what you need. Expansion licenses can be applied to any Instance type.	The industry has many 3 rd party providers who are great at what they do. Access Expert works great with other leading solutions

Access Expert offers 4 starting points for customers to choose from. Each offering delivers power functionality with endless scalability and natively include most features customers are looking for.

All starting points include powerful reporting capabilities, options for CCTV integration, support for elevator destination dispatch, graphical floor plans, and no limitations on the number of concurrent operators, card holders, events, schedules, or hardware expansion.

	Basic Instance	Premium Instance	Enterprise Basic	Enterprise Premium
Main Instance	✓	✓	✓	✓
Shared Instance	✗	✗	Option	Option
Unlimited Operators	✓	✓	✓	✓
2 Readers Included	✓	✓	✓	✓
HTML5 Access	✓	✓	✓	✓
Mobile App	✓	✓	✓	✓
Single Sign On	Option	Option	✓	✓
Origo Integration	Option	✓	✓	✓
ID Badging	Option	✓	✓	✓
Custom Forms	Option	✓	✓	✓
Mass Notification	Option	✓	✓	✓
Visitor Management	Option	Option	Option	Option
Mass Messaging	Option	✓	✓	✓

* Wireless locks are considered doors and are included in the doors total.

Instance Types:

Access Expert is available in 4 different types of hosted instances. Most customers will operate with either a Basic or Premium instance, the Enterprise versions are also available for those customers needing a centralized management structure across their domain while also enabling separation between divisions or sites.

Instance Type	Description
Basic	Basic Instance. Includes 2 Reader Licenses, HTML5 Web Access, Mobile App License (IOS and Android) and unlimited concurrent operators via the Windows Applet.
Premium	Access Expert Instance Bundled with premium features. Includes 2 Reader Licenses, HTML5 Web Access, Mobile App License (IOS and Android), Photo ID Badging, Custom Forms, Mass Notification via e-mail & SMS (Limit 1,000 per month) and unlimited concurrent operators via the Windows Applet.
Basic Enterprise	Initial set up of an Enterprise Standard instance allows end user to partition multiple facilities into individual Shared Instances, separating the data yet allowing it to be part of the Enterprise. Includes: unlimited concurrent users, Windows App, HTML5 web access, mobile apps (iOS & Android), email notifications, HID's Origo mobile credential license, Single Sign-On (SSO), along with one (1) Shared Standard instance. Two (2) reader licenses included.
Premium Enterprise	Initial set up of an Enterprise Plus instance allows end user to partition multiple facilities into individual Shared Instances, separating the data yet allowing it to be part of the Enterprise. Includes: unlimited concurrent users, Windows App, HTML5 web access, mobile apps (iOS & Android), badge design and printing, custom forms, mass notifications for both email + SMS notifications (up to 1,000 SMS messages per month), HID's Origo mobile credential license, Single Sign-On (SSO), along with one (1) Shared Plus instance. Two (2) reader licenses included.
Shared Instance	An instance that is added to an Enterprise system when can be used to enable separation from other sites or divisions while still being a part of the overall Enterprise system.

When to Go Enterprise:

Enterprise instances provide several benefits for the separation of data and hardware. The term enterprise generally implies a large system, but a smaller system may also consider Enterprise licensing depending on the solution requirements.

The largest benefit of Enterprise licensing is the ability to add shared instances. These Shared instances are maintained by the Enterprise instance but can also be managed as individual instances when required. This allows for more granular control of segmented data and hardware configuration.

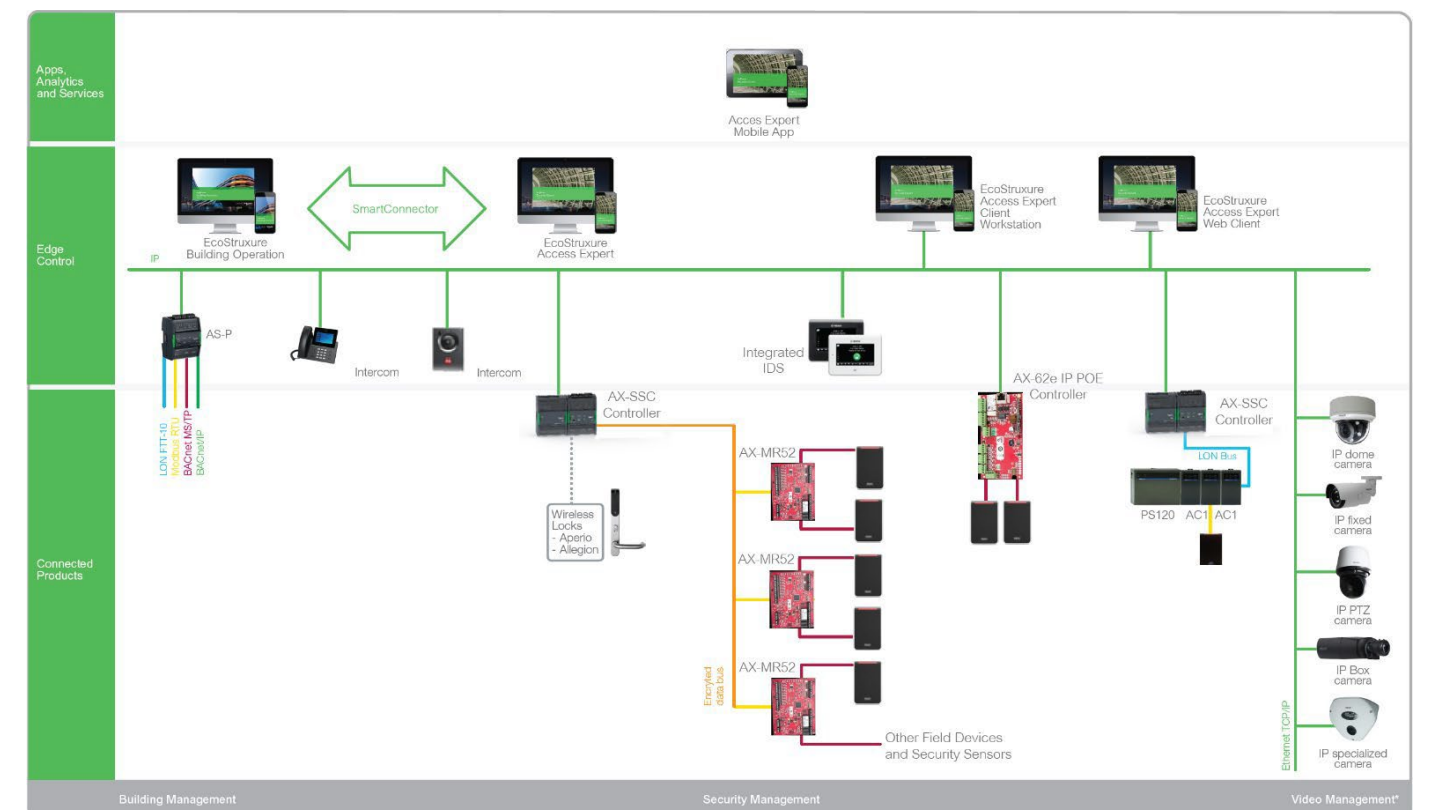
Geographically spread-out customers tend to have more isolated operations. For example, if your customer has buildings in multiple countries such as the Philippines, Europe, The United States and China, each building (or location) is likely to have its own security staff and facilities group. The separation of instances available via Shared instances will provide each location with the ability to separately manage their people and readers. This deployment strategy also provides the ability to assign access to facilities no matter their geographic location.

Multi-Tenancy Buildings pose a unique challenge in that the main floor or entry readers are typically managed by the building owner, but all tenants need access to them. Enterprise architecture provides a solution to this by leveraging its shared instances. Building owners would maintain total control at their root enterprise level while allowing tenants access to each of their respective shared instances. When a tenant changes, that shared instance with that customer's data is removed and replaced with the new tenant's data. This also allows each tenant to observe different holidays and manage different working hours without conflict.

System Expansion Options

Access Expert makes system expansion as simple as 1...2...3. Customers never have to worry about the scalability of the services as Access Expert automatically accounts for what is needed to support your growth plans. Here are the core System Expansion Licenses:

Product Code	Product Name	Description
AXH-V3BASIC-SH	Access Expert Basic Shared Instance	Provides an additional Instance to be added to a Basic Enterprise system. Optional licenses from the Enterprise system are automatically applied to the Shared Instance.
AXH-V3PREMIUM-SH	Access Expert Premium Shared Instance	Provides an additional Instance to be added to a Premium Enterprise system. Optional licenses from the Enterprise system are automatically applied to the Shared Instance.
AXH-RMC-32V3	Single reader license (up to 32 readers)	The starting point for reader expansions. These apply to the first 30 readers added to any system. Note that every Instance comes with the 1 st two reader licenses already included.
AXH-RMC-64V3	Single reader licenses (33-64)	For systems that are expanding beyond 32 readers. This tier is offered at a discounted rate for readers 33-64.
AXH-RMC-96V3	Single reader licenses 65-96	For systems that are expanding beyond 64 readers. This tier is offered at a discounted rate for readers 65-96.
AXH-RMC-97+V3	Single Reader License 97+	For systems that are expanding beyond 96 readers. This tier is offered at a discounted rate for readers 97 and beyond.
AX-RMC-300+	READER LICENSE 300+	For systems that start with 300+ Readers. This tier is offered at a discounted rate in bulk quantities of 300.
AX-V3SDK	Access Expert API	V3 API complete with API training and (1) year of API upgrades, (5) hours of development phone support and a development instance
AXH-IDMV3	Photo ID Badging	ID Management Upgrade add to AXH-BASIC. Used for badge design and printing. Included in Premium
AXH-CUST	Custom Data Forms	Custom Forms Upgrade add to AXH-BASIC. Allows users to create personalized forms containing custom fields for data entry and advanced reporting. Included in Premium
AXH-ALERTV3	Alert Notifications	SMS Upgrade to AXH-BASIC. Includes 500 SMS messages monthly. Included in Premium
AXH-ALERT1KV3	Alert Notification Expansion	Additional 1000 SMS messages per month. Can be added to any Basic or Premium Instance.
AXH-AVM	Visitor Management	Access Expert Visitor Management. Includes access through HTML5 Web Application.
AXH-AVMENT	Enterprise Visitor Management	Access Expert Visitor Management for Enterprise Hosted Instances. Includes access through HTML5 Web Application. One license of AVMENT applies to the Enterprise and all Shared Instances.
AX-V3DS	Data Retention	ADDITIONAL YEAR OF STORAGE AFTER FIRST YEAR (UP TO 50GB). Access Expert standard retention policy is 12 months then FIFO.
AXH-SAFR	SAFR Integration License	(1) Per SAFR reader. Enables facial recognition integration between Access Expert and SAFR SCAN devices. NEW
AXH-MS-BI	Milestone Integration	Enables bi-directional integration between Access Expert and Milestone VMS. NEW
AXH-DEST-xxx	Destination Dispatch	Enables elevator destination dispatch integration with supported elevator platforms. NEW





System Expansion Highlights

Visitor Management

Product Code: AX-AVM or AX-AVMENT

Access Expert has a native Visitor Management system that is seamlessly melded into the system. Available from both the client software and webclient, the Visitor Management module can be used to help manage visitors from any location. Visitors can self-check-in at a kiosk or be pre-enrolled by an employee and notifications will automatically be sent to the meeting host.

Simplified View	Easy Data Entry	Contractor Management	Restrictions
Access Expert uses an Outlook style calendar view with the Windows Applet making the feature easy to use and very intuitive.	Through integration with various leading scanners, adding visitors to Access Expert is a seamless process	Access Expert allows operators to assign visitors to Companies and classify them as Contractors. This enables operators to easily see what projects people are working on as well as any escort requirements.	Customers can create their own Restricted list and the system will automatically monitor and prevent those individuals from being invited to meetings or being included in visitor requests.

Visitors are incorporated into the system through a variety of ways. They can be added through the Windows Applet, HTML5 Web Client or the Visitor Kiosk. Customers can easily filter, search and run reports specifically on visitors and contractors to easily see their visits as well as any special escort requirements.

A single license applies across the entire instance so if you have one location or hundreds, a single license applies equally to all.

Mass Notification

Product Code: AXH-ALERTV3

A very powerful feature that is included in Access Expert. The Mass Notification function enables Operators the ability to send a unique or canned message to a single person, groups of people or everyone in your entire database with a click of a button.

Two Factor Authentication

Product Code: Included

Access Expert expands on the Cyber Security Focus by including (2) options for customers to choose from regarding 2FA. Customers can pick from Text or QR Code based 2FA with no additional licensing.

Milestone VMS Integration NEW

Product Code: AXH-MS-BI

Access Expert supports a robust and feature rich bi-direction integration with Milestone System's XProtect VMS solution.

Reporting is a critical part of any Security or Access Control System and Access Expert delivers a powerful and robust reporting package that includes over 25 pre-configured reports, offers customers the ability to create/save their own reports and even goes so far as to automate the delivery of frequently needed reports via email.

Time and attendance Reporting

Product Code: Included

Access Expert includes (3) types of Time & Attendance reports for customers to choose from. Between the Time & Attendance report, Work Week Report and the Work Week Summary Report, Access Expert has you covered.

Scheduled Reports

Product Code: Included

Access Expert has over a dozen reports that can not only be customized but which can also be scheduled to automatically run and be delivered via email to key stake holders.

Contact Tracing Report

Product Code: Included

Ever had the need to know who had been in close contact with a specific person or who was in an area at a specific time when a targeted user came through a door? Access Expert's Contact Tracing Report can help you address this need and provides options for unique pre-post time parameters.

Muster Report

Product Code: Included

Knowing where your team is during a critical situation is imperative and Access Expert delivers yet again. Whether using the Entry/Exit Report, Area Report or even the Live Area reporting, Access Expert will be able to help you know who is in, who is out, and where they are onsite.

Scheduled Tasks

Product Code: Included

Ever had the need to deactivate cards which have not been used within a specified period of time? Access Expert has you covered and even automates the process for you.

Expiring Cards

Product Code: Included

Ever had the need to report on expired cards or even extend an expiration date for groups of card holders? Access Expert has you covered. Operators can easily run a canned report with a complete list of expired cards and from the same screen, can select to renew and extend those cards as well.





Integrations

Access Expert delivers on extending your domain and simplifying your security operation by delivering powerful integrations. Through powerful integrations with other industry leading platforms, Access Expert helps make sure you are connected, informed and in control.

Allegion

Product Code:

AX-ALLEGION-PL-NH	Enables the connection of a supported Allegion wireless lock to a system controller. A license is required for each connected wireless door.
AX-SES-IP	Allegion IP Gateway Appliance. Can be used in selected projects and enables integration from the IP enabled Allegion Gateways directly into Access Expert. Please consult your local representative for specific use applications.

Supported Locks and Devices

Wireless Locks	AD300, AD400, NDE, NDEb, LE, LEb, Control Lock	Wireless Receivers	Allegion PIM and Gateway
----------------	--	--------------------	--------------------------

Allegion integration is a licensed feature that allows you to utilize Allegion locks within Access Expert. When connected to the system, the Allegion wireless locks are created, edited, used and interacted with no differently than a wired door.

ASSA ABLOY

Product Codes:

AX-ASSA-PL-NH	Enables the connection of a supported Aperio wireless door to a system controller. A license is required for each connected wireless door
---------------	---

Supported Locks and Devices

Wireless Locks	Wireless devices that connect through the Aperio Hub*	Wireless Receivers	Mercury Powered Aperio Hub
----------------	---	--------------------	----------------------------

ASSA ABLOY integration is a licensed feature that allows you to utilize Aperio enabled wireless locks within Access Expert. When connected to the system, the ASSA ABLOY wireless locks are created, edited, used and interacted with no differently than a wired door.



* Integration currently leverages the RS-485 powered and IP powered hubs.

Alligion Supported Features

Function	AD-400 (AX-SSC)	AD-400-1501	AD-300	NDE/LE (AX-SSC)	NDE / LE 1501	Control Lock
Max Number of PIM / Gateways	16 / 8	8 / 8	NA	16	8	10
Max Number of Locks per Port	32	16	32	10	16	NA
Real-Time Events	Yes	Yes	Yes	Yes	Yes	Yes
Max Locks Per Controller	64	16	64	64	16	100
Magnetic Stripe	No	No	No	NA	NA	NA
Proximity 125 KHz	Yes	Yes	Yes	Yes	Yes	NA
Smart Tech 13.56 MHz	Yes	Yes	Yes	Yes	Yes	Yes
PIV	Up to 75 Bit Only	Up to 75 Bit Only	No	No	No	No
Card + PIN	Up to 15 Digits	Up to 15 Digits	Yes	NA	NA	NA
PIN Only	Up to 15 Digits	Up to 15 Digits	Yes	NA	NA	NA
REX Monitor	Yes	Yes	Yes	Yes	Yes	NA
Door Position Monitor	Yes	Yes	Yes	Yes	Yes	NA
Key Override Monitor	Yes	Yes	No	NA	NA	NA
Low Battery Status	Yes	Yes		Yes	Yes	Yes
Comm Status Monitor	Yes	Yes	Yes	Yes	Yes	Yes
Remote Lockdown/Reset	Yes	Yes	Yes	Yes	Yes	Yes
Deadbolt Position Monitor	Yes	Yes	Yes	NA	NA	NA
Interior Push Button Monitor	Yes	Yes	Yes	Yes (b) Series	Yes (b) Series	NA
Classroom/Store Room Mode	Yes	Yes	Yes	Yes	Yes	NA
Privacy Mode	Yes	Yes	No	NA	NA	NA
Office Mode	Yes	Yes	No	NA	NA	NA
Apartment Mode	Yes	Yes	No	NA	NA	NA

Device capacities will vary by controller type being used.

ASSA ABLOY Supported Features

Function	Supported
Card Reader and/or Keypad: Supports multi-factor authentication (Keypad - 4 to 16 digits), Pin Only	Yes
Remote Unlock: Momentary unlock initiated by EAC	Yes
Remote Unlock: Door Schedule initiated by EAC	Yes
Office Functions: First Man In	Yes
Office Functions: Toggle: Present a card twice, door permanently unlocks until card is presented twice again. Puts door in "passage mode".	Yes
Office Functions: Double Badge (Card presented twice quickly)	Yes
Set Time	Yes
Tamper	Yes
Door State (All)	Yes
Handle State (All)	Yes
Lock state (All)	Yes
Key Cylinder State (All)	Yes
Battery Status (notification)	Yes
Battery Status (request)	Yes
Door Mode Notification	Yes
Privacy Mode	Yes
PIN only	Yes
Card and PIN	Yes
Maximum PIN length	15
Battery status	Yes
Lock offline detection	Yes
Hub restarted detection	Yes
Reading current online status	Yes
Hub offline detection	Yes
Remote Unlock	Yes
Monitoring door mode	Yes
Monitoring door state	Yes
Monitoring lock state	Yes
Monitoring handle state	Yes
Monitoring key cylinder state	Yes
Monitoring tamper state	Yes
Monitoring activator state	Yes
Two Man Rule	Yes
Number of Devices Per Hub	8

Device capacities will vary and are subject to change

Active Directory

Product Code: AXH-ADS plus AXH-ADSxxx

Access Expert integrations with Active Directory over LDAP. The Active Directory integration allows users to synchronize data between Access Expert and other databases commonly used by customers such as HR, CRM and Financial Systems. Through the integration, customers can map unlimited fields from their HR systems into Access Expert such as:

Actively syncs fields based on time interval set by administrator	Records disabled in AD are disabled in Access Expert	Records reactivated in AD are reactivated in Feenics upon next synchronization interval
Helps maintain employee data across all systems	Provides single point of data proof	Import identification photos
Share specialized data using custom forms	Assign access based on values from Active Directory	

The communication service is deployed locally which keeps the customer in control. Understanding that no two customers are the same, the integration is configurable and allows customers to choose what data to bring into Access Expert and also set thresholds for the number of records to import. The connection is active so not only are existing and new records captured but also changes to existing.

No two organizations are the same so the ADS integration should not be either. The Service is designed to support the size of the customers organization

Part Number	Description
AXH-ADS500	Sync Service for 1-500 employees
AXH-ADS5K	Sync Service for 1 -5,000 Employees
AXH-ADS10K	Sync Service for 1 to 10,000 Employees
AXH-ADS15K	Sync Service for 1 to 15,000 Employees
AXH-ADS20K	Sync Service for 20,001 to Unlimited Employees

NEW

Video Management Integrations

Access Expert supports a variety of VMS integrations which provide a holistic integration operating environment for customers. Customers can control PTZ cameras, view live and event/alarm-based recordings from a single camera or from configured camera views that can range from 2 to 9 cameras.

Cameras can be linked to doors, inputs, outputs, points, intercoms and alarms allowing you to easily retrieve footage based on any associated event or alarm. Access Expert allows operators to associate multiple cameras or camera views to a single device then select the one that is most applicable to the current situation. Camera Views are a unique feature which allows customers to stitch multiple cameras together into a single view. This provides customers the ability to see critical situations from multiple perspectives at the same time.

In some cases, Access Experts VMS integration can be used in a bi-directional manner where Access Control functionality can be shared, viewed, and even controlled from the Video Management System.

Supported Video Management Systems	
Pelco Unity	Arecont Vision
Arcules (Cloud)	Hanwha Wisenet
WaveStone	Salient
Milestone	Open Eye (Cloud)
Exacq	Avigilon
AVA (Cloud)	Ganz
YourSix (Cloud)	Luxriot
Licensing	
AXH-V3CAMRS	Single Camera Integration for Non Pelco
AXH-V3CAMRS-P	Single Camera Integration for with Pelco VideoXpert
AXH-MS-BI	System integration with Milestone XProtect

NEW



Elevator Integrations

Integrating with elevator systems is in great demand in today's buildings and Access Expert supports the traditional relay logic approach for floor control but also has integrations with various elevator manufacturers for Destination Dispatch for floor control which help improve building security but also help to streamline the flow of people within the building.

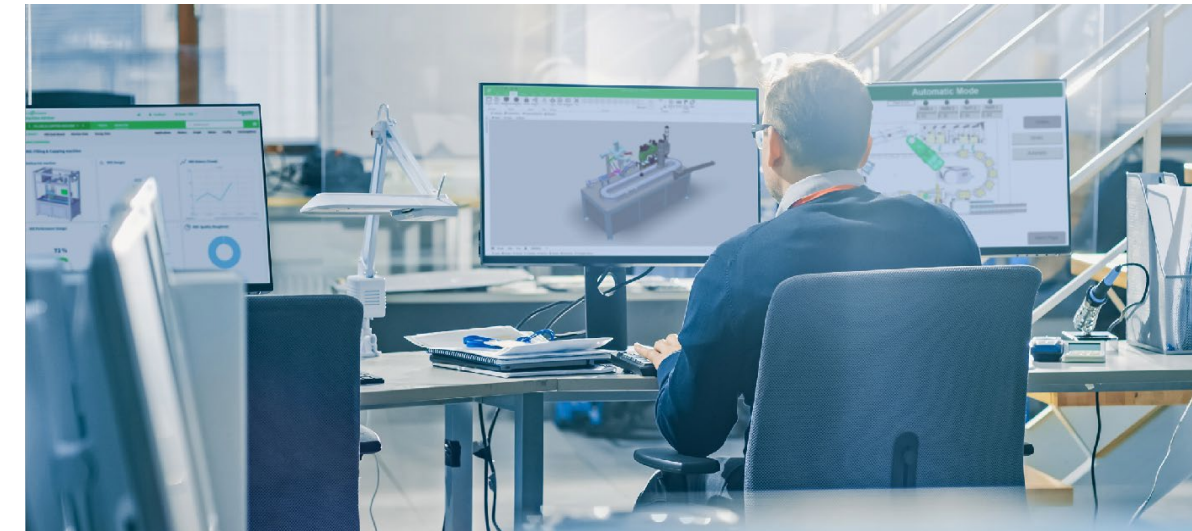
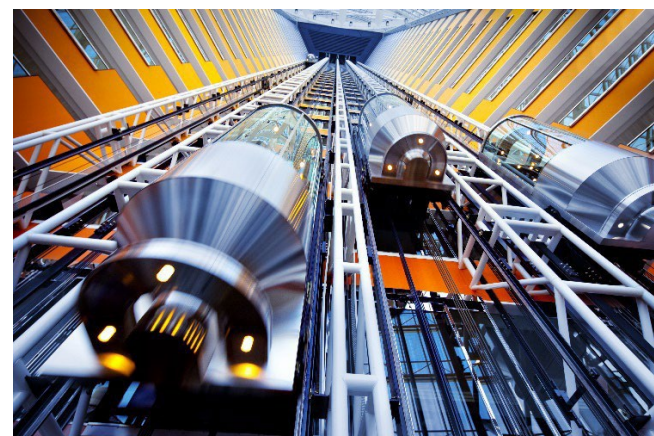
Destination Dispatch significantly reduces your overall installation costs by eliminating the costs associated with trailing cables specific to access control.

Modern elevator systems provide a destination-based dispatch solution where a passenger presents their card to a display panel inside or outside the elevator and selects their desired destination floor. Access Expert verifies that the cardholder has the required permissions to access the floor (through access levels and schedules) and grants or denies the request.

Supported Destination Dispatch

	Product Code	Database Synchronization	VIP Access	Access Level Home Floor	Rear Elevator Access
KONE	AXH-DEST-KONEV3	n/a	✓	✓	✓
OTIS	AXH-DEST-OTISV3	n/a	✓	✓	✓
Mitsubishi	AXH-DEST-MIT	n/a	✓	✓	✓
Schindler	AXH-DEST-SCHND	✓	✓	✓	✗
ThyssenKrupp	AXH-DEST-TKV3	n/a	✓	Preferred Cab	✓

*See application notes for detailed functionality of each integration



Other Integrations

Biometric Integrations

Invixium Biometric Integration License

Product Code: AXH-INVX-NH

Access Expert integration with Invixium biometric readers supports all of the readers offered by Invixium through a simple user management screen. Biometric enrollment is managed from the Invixium web portal which is automatically synchronized with Access Expert.

Facial Biometric Recognition License NEW

Product Code: AXH-SAFR

Access Expert integration with SAFR SCAN facial recognition readers supports direct integration with enrollment and control managed through Access Expert. Facial enrollment is easily managed from Access Expert via the Mobile App or Windows Client.

ISONAS IP Reader NEW

Product Code: AXH-IP-RDR

Access Expert supports direct integration with the Allegion ISONAS IP readers. These readers integrate directly into Access Expert with no need for a local controller. Being IP and POE based makes deployment fast and easy.

Intrusion Detection Systems

Product Codes: AXH-IDSV3 plus AXH-BDS

Access Expert provides a deep integration with the IDS Systems from Bosch. Through the optional communications driver, customers can connect multiple Bosch panels to a single Access Expert instance. Once the connection is established, the service will automatically import the Bosch panel settings thus simplifying the installation process.

AXH-V3IDS	One (1) Bosch intrusion panel integration. Required AXH-LA or AXH-BDA
-----------	---

Supported Panels	Bosch B Series Panels are supported including: B3512, B4512, B5512, B6512, B8512G, B9512G, D9412GV4, D7412GV4*
------------------	---

* D series panels require NIC card and additional field hardware.

Supported Functionality	
Manage Bosch User and Codes	Arm/Disarm from Access Expert Client, Web and Mobile
Configure Zones and Authority Levels	Bypass points
Link Bosch Points to Cameras	Display Bosch Points in Hardware tree
Display Bosch points on Floor Plans	Monitor Events and Alarms
Control Keypad Display by Area	Create Open/Close Reports
Send SMS/Email Alerts	Set Watch Mode
Activate Outputs	Set Late To Close

Mobile Credentials

Product Codes: AX-ORIGO

HID Origo is a Trusted Cloud platform that enables customer and system integrators to leverage Mobile Credentials from HID. In many cases, the HID Origo platform is a separate and isolated system from today's PACS systems, but this is not the case with Schneider Electric's Access Expert solution. With Access Expert, customers and system integrators can benefit from a synchronized integration so managing mobile credentials is a seamless single point of entry process. This type of integration simplifies the day-to-day operations for customers and reduces potential confusion and conflicts when having to interact with 2 different interfaces.

Mobile ID's are ordered separately.

Visitor Management Systems – 3rd Party

Though Access Expert has a feature rich native Visitor Management module, we also support a variety of 3rd party Visitor Management systems.

Splan

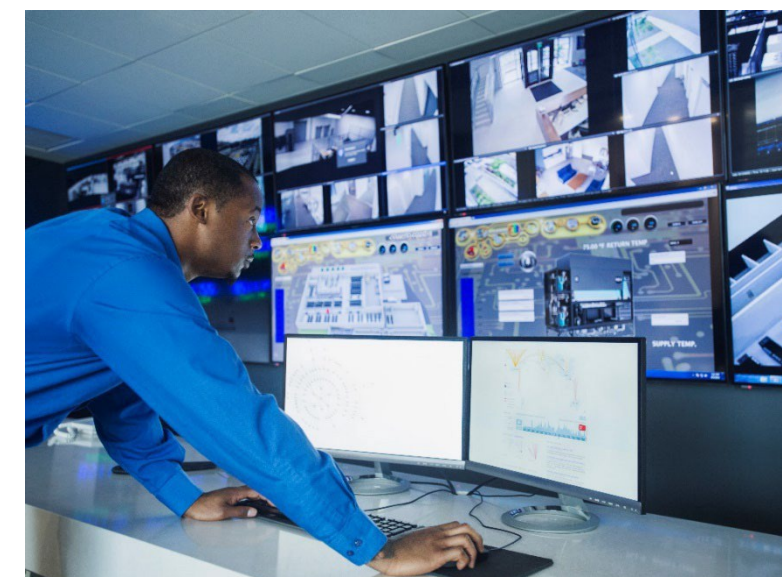
Product Code: AXH-SPLAN

Splan's intuitive visitor management solution will redefine your overall visitor management experience by providing a streamlined process for pre-registration, communication and check-in regardless of device or environments. This will allow users to have the same experience on an iPad, Android tablet, Windows Mobile App or on large display screens in your lobby.

The integration with Access Expert provides seamless flow for visitor check-in and check-out using Splan Visitor Management System. Splan provides highly configurable solutions allowing our clients to dynamically change their integration parameters based on unique requirements, per site or location.

Visitor Check In	Visitor Check Out
Splan pushes the visitor's profile details during check-in and provisions credentials with required access levels to Keep. Admin can configure required data elements to be passed to Feenics based on location.	Splan will automatically remove Splan created credentials from Keep on check-out and also supports auto check-out at the end of the day.

Access Expert also supports integrations with Envoy, Building Intelligence and Savance platforms for Visitor Management. Please contact your local Sales Representative for more information.



Intercom System Integration

Product Code: AX-STENTO-NH

Access Expert builds upon the rich and robust past by regularly introducing requested new features to market to help customers provide Safe and Secure environments for their facilities. Access Experts integration with the IP based solutions from Zenitel has resulted in the industries 1st Cloud based solution connecting to a locally deployed premise-based audio intercom system. The result is a powerful integration that saves operator time, speeds security response, and improves domain awareness.

We are pleased to announce the rich integration with the Zenitel ICX-Alphacom IP based intercom communication system. This integration expands the operational efficiencies of the Access Expert platform by incorporating an integrated approach to Security and Audio needs. This powerful and feature rich integration delivers a multitude of new benefits:

Ease of Use	Stay Informed	Improved Operations	Safe & Secure
The integration supports automatic importing of configured stations. This means no duplicate entry and equates to faster deployments and cost savings.	Operators can see the status of intercom stations through integrated floor plans and the hardware tree. An easy and clear view of status removes operator guesswork, reducing errors and improving status visibility.	Operators can remote release doors to allow entry after visual and audible verification via a simple and intuitive right click action.	Operators can easily execute a lockdown function for a single door or even multiple doors via a simple and intuitive right click action.

Integration Licenses	
AXH-STENTO-NH	Access Expert Integration license applied to the instance. (1) needed per integrated station
STN-1002602306	ICX API Integration license for 64 stations. (1) needed for every 64 integrated stations
ZENITEL SYSTEM COMPONENTS	
STN-5554200001	ICX-Alphacom Package - includes ICX-500 hardware, Alphacom software, rack shelf, PSU
STN-1002600100	ICX IP Station license – one per connected IP station
ZENITEL IP INTERCOM STATIONS	
STN-1008315020	TCIV-2+, Turbine Video Intercom, Stainless steel w/ red button
STN-1008315030	TCIV-3+, Turbine Video Intercom, Black single button
STN-1008315060	TCIV-6+, Turbine Video Intercom, black with scrolling directory display
STN-1490003010	ITSV-3, Video Touchscreen Master Station
STN-1008111020	TCIS-2, Turbine Intercom, Stainless steel w/ red button
STN-1008111030	TCIS-3, Turbine Intercom, Black single button
STN-1008111060	TCIS-6, Turbine Intercom, black with scrolling directory display
STN-1008007000	IP Desk Dual Display Station
STN-1008401000	IP Desk Master with Handset – V2
Additional device options and functionality licenses are available. Please consult with your local sales representative for more information.	

Key Features

Function	Supported
Station Status	✓
Call Status	✓
Link to Door - Door Release	✓
Link to Door - Floor Plan	✓
Auto Import	✓
PTZ Control	✗
Camera Link	✓
Call Forwarding	✗
Camera View Link	✓
Custom Actions	✓
Custom Events	✓
Floor Plan View	✓
Listen In	✗

Multi-factor Authentication

Product Code: Included

Keeping your facility safe and secure is more than just controlling gates, doors and elevators. In today's world, keeping the network and the systems connected to the network is required. Access Expert delivers (2) options for customers looking for enhanced operator security beyond username and password.

Access Expert comes with (2) forms of Two Factor Authentication that Operators can leverage. These are provided at no charge and can be enabled by individual operators as needed.

Text Based	QR Code Based
Optional setting where Access Expert will send a onetime use code via text to the operator's mobile device.	Optional setting where the operators utilized their mobile device to scan a QR Code.

Single Sign On

Product Code: AX-SSO

Access Experts Identity Service Provider initiated login offering supports SAML2.0. Single Sign-On simplifies the username and password management processes for small and enterprise customers alike. Single Sign-On is a user authentication system that allows a user to use a single set of credentials to access multiple applications. The service authenticates the user for all the applications the user has been given rights to and eliminates future password prompts for individual applications during the same session.

Password Management

Access Expert natively incorporates a powerful password policy application which puts system administrators and operators in control. Access Expert natively supports:

Max Days	Minimum Length
Maximum Failed Login Attempts	Lockout Duration
Days before password can be used	Require Wild Card Characters
Require Special Characters	Account Disable
Account Lockout	Require Password Change



Multi-factor Authentication

Product Code: Included

Keeping your facility safe and secure is more than just controlling gates, doors and elevators. In today's world, keeping the network and the systems connected to the network is required. Access Expert delivers (2) options for customers looking for enhanced operator security beyond username and password.

Access Expert comes with (2) forms of Two Factor Authentication that Operators can leverage. These are provided at no charge and can be enabled by individual operators as needed.

Text Based	QR Code Based
Optional setting where Access Expert will send a onetime use code via text to the operator's mobile device.	Optional setting where the operators utilized their mobile device to scan a QR Code.

Single Sign On

Product Code: AX-SSO

Access Experts Identity Service Provider initiated login offering supports SAML2.0. Single Sign-On simplifies the username and password management processes for small and enterprise customers alike. Single Sign-On is a user authentication system that allows a user to use a single set of credentials to access multiple applications. The service authenticates the user for all the applications the user has been given rights to and eliminates future password prompts for individual applications during the same session.

Password Management

Access Expert natively incorporates a powerful password policy application which puts system administrators and operators in control. Access Expert natively supports:

Max Days	Minimum Length
Maximum Failed Login Attempts	Lockout Duration
Days before password can be used	Require Wild Card Characters
Require Special Characters	Account Disable
Account Lockout	Require Password Change

EcoStruxure Building Operation

Product Code: SW-SMARI-CONNECT

EcoStruxure Access Expert is a Hosted integrated access control solution with connections into other 3rd party system including Intrusion Detection and Video Management. The EcoStruxure Access Expert Smart Connector expands the integration portfolio to now include integration with EcoStruxure Building Operation. This allows for an integrated building management system, enabling a user-friendly system that is more efficient to operate.

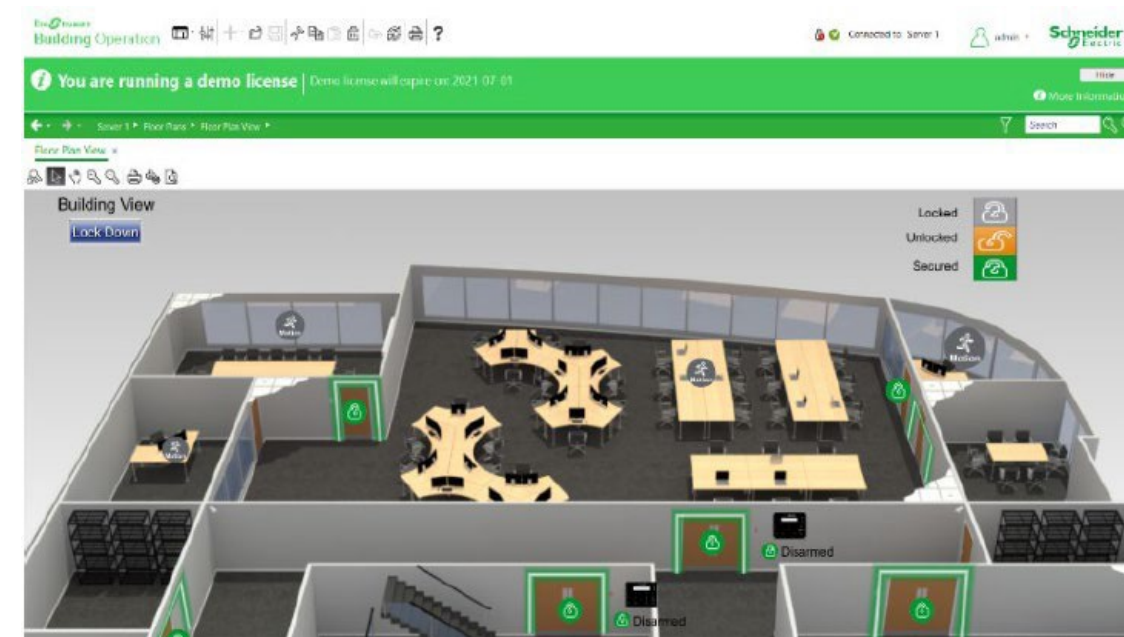
Key Advantages:

- Creates a connection between building management and security
- Delivers Access Expert information to EcoStruxure Building Operation to optimize system interactions
- Utilize powerful EcoStruxure Building Operation graphics to display key access control information
- Allows centralized alarm management

With access to EcoStruxure Building Operation graphics, users can display live data from an Access Expert system. This enables an operator the ability to interact with Security focused devices from the EcoStruxure Building Operation application and link the Security objects to other connected systems such as Building Automation and Lighting Controls.

The TGML graphics can be customized to user requirements by using the powerful graphics editor with access to java scripting to enhance functionality.

Access Expert alarms can be delivered to EcoStruxure Building Operation to allow central management of the system and to expand the visibility of critical information. Alarms and alarm acknowledgements are synchronized across both systems which enables operators the ability to see and acknowledge alarms from either EcoStruxure Building Operation or Access Expert. By integrating Access Expert alarms, the powerful alarm management features in EcoStruxure Building Operation can be utilized to customize and visualize critical alarm data.



Event Management

Product Code: Contact Sales

Today's Educational institutions are filled with operational challenges and Access Expert aims to help mitigate with a specific focus on room scheduling.

Higher Education runs like a machine with various dynamic changes around class and room schedules. Through an integration with Detrios, Access Expert has the ability to integrate with various 3rd party platforms including Ad Astra, CollegeNET and EMS. Keen to the slogan of Schedule-Driven Access, the integration helps deliver intelligently secured spaces in a dynamic operating environment.

Knowing that Security is key, the integration has been developed to ensure the normal nature of a controlled space remains secured. This is achieved by allowing Access Expert to continuously hold the door(s) in a Secured state through a Schedule. The integration enables Ad Astra to tell the secured opening to unlock then reset to the default operating mode. Customers can also select a pre/post time for the secured opening(s) to open prior to and after a scheduled class which supports those individuals who arrive early.

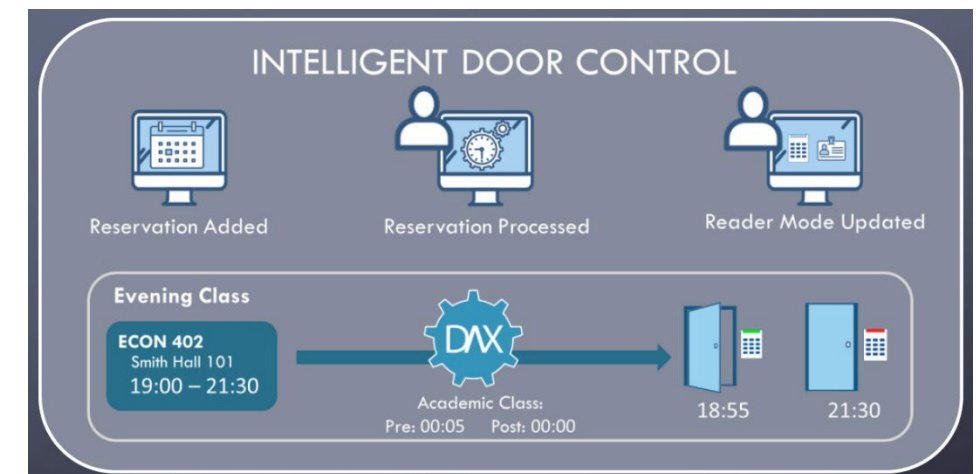
When weather delays, maintenance windows, or lockdown scenarios arise, Access Expert ensures that your systems will react in a reliable, consistent manner. If you lock down a room, a building, or an entire campus, the integration understands and reacts appropriately. A pre-configured schedule that unlocks during a lockdown or a weather delay/maintenance override puts your people and your assets at risk.

Access Expert supports integration with several Room Scheduling and Event Management platforms through an integration platform called Detrios. Please contact your local sales representative for additional information. Room and Event systems purchased separately.

Ad Astra	Smartway Scheduling
CollegeNet	EMS

These integrations offer powerful benefits to customers and deliver schedule driven and intelligently secured areas based upon those events and schedules configured in the Event Management Systems. Key features specific to the Ad Astra integration include:

Function	Supported
Early to Open	Y
Late to Close	Y
Override Door Schedule	Y
Configurable Pre/Post Open Time	Y
Varied Unlock by Room Type	Y
Unlock Immediate Mode	Y
Weather Day Configuration	Y
Special Event Configuration	Y



Mobile App

Access Expert Mobile App



Product Code: Included

The EcoStruxure Access Expert Mobile App firmly puts the power of your system in the palm of your hands. This feature rich application is supported by both IOS and Android devices and delivers on our commitment of mobility enablement. While on the go, operators can check the system status, arm or disarm areas, manage card holders, see events and even set your system to lockdown during an emergency – from anywhere, anytime.

Features

Secured Login: Access Experts mobile app will leverage your devices secured login including Face ID and your view is tied to your role and permissions.

Favorites: Each operator can have their own unique home page set to only display those system devices which are important to them while still having access to the overall system.

Mass Messaging: Use your phone to send messages to team members, contractors, visitors, or everyone in your database. Messages can be typed in or operators can leverage pre-configured templates.

Event View: View events and monitor system activity and even filter for specific information occurring at doors or with people. Clicking the event will take you to more details, add notes and allows the operator to even acknowledge the event and review operational instructions. ID Photos are also displayed for Access Granted/Denied which supports mobile ID checks.

Mobile Verification: Using QR Codes, operators can scan ID Badges with their mobile devices camera and Access Expert will display the card holders profile including valid cards, system photo, access levels and other information.

SMS Notifications: Each operator can subscribe to push notifications to receive alerts. Helping to minimize nuisance information, the notifications are based upon those items selected as their favorites which ensures the information is specific and relevant to what you feel is important.

Door Management: Monitor the status of your doors and even take control while on the go. Not only can you see the status, but operators can remote release, secure, unlock and lockdown doors and quickly get to historical events.

Simulate Card Read: Allows someone to enter their card number or PIN code to gain entry through a door in the event they have misplaced their card.

Intrusion Management: Monitor the status and control your integrated intrusion system. Operators can arm/disarm areas, control outputs, and bypass points.

People Management: Manage card holders from the palm of your hands. Capture and update photos, add/remove access levels, add/remove card numbers. Access Experts mobile app can be used as a mobile ID Badging station as well.



IP Controllers & Power Supply Modules



Access Expert Security System Controller

Product Code: AX-SSC

Build leveraging the power of the ASP platform, Access Experts AX-SSC is a powerful IP level controller that supports legacy Continuum AC-1 modules, Mercury field hardware and wireless locks from ASSA ABLOY and Allegion. Onboard memory ensures local system operation during network outages and provides local buffering of events that automatically upload once connectivity is established.

At A Glance	
Number of Doors	Up to 64
Number of Points	Up to 1,024 inputs and 1,024 outputs
Memory	512MB DDR3 SDRAM / 4GB eMMC Memory
Credential Formats	16 Formats, magnetic stripe, proximity, smart cards, and F2F and Supervised F2F
Storage	Up to 1,500,000 Card Holders and up to 50,000 Events
Power	
DC Input Operating Voltage	24VDC 10W
DC Output (Auxiliary)	10.45-13.85VDC 0.7A (Typical) Electronic shutdown at 1.1A
Communication	
Communication (Ethernet)	Dual 10/100BASE-TX RJ45
Communication (RS-485)	(2) LonWorks TP/FT-10, (2) 2-wire ports, bias 5.0 VDC
Communication (USB)	USB 2.0, 1 device port (mini-B) and 1 host port (type-A)
HTTP	Non-binary, port configurable, default 80
HTTPS	Encrypted supporting TLS 1.2, port configurable default 443
SMTP	Email sending, port configurable, default 25
SNMP	Version 3
Temperature / Environment	
Ambient Operating Temp	0 to 50 °C (32 to 122 °F)
Ambient storage, operating	-20 to + 70 °C (-4 to 158 °F)
Maximum Humidity	95% RH non-condensing
Dimensions	
Dimensions (L x W x H)	90 W x 114 H x 64 D mm (3.6 W x 4.5 H x 2.5 D in.)
Weight	0.321 kg (0.71 lb)
Operating Conditions	
Emission	RCM; EN 61000-6-3; EN 50491-5-2; FCC Part 15, Sub-part B, Class B
Ratings	EN 50491-1, UL 294, EN 60730-1; EN 60730-2-11; EN 50491-3; UL 916 C- UL US Listed
Related Items	Base - SXWTBASW110002, Power Supply - SXWPS24VX10001, Power Supply Base - SXWTBPSW110001



Access Expert Intelligent Controller NEW

Product Code: AX-MP4502

The MP4502 supports a variety of extended features including High Assurance Credential Authentication, Elevator Destination Dispatch and complies with the BACnet IP communication protocol. A USB-to-Ethernet IP adapter provides an optional redundant host IP connection, has direct support for 2 reader-controlled openings and can scale to 64 access points. Built on proven Authentic Mercury hardware, this high-performance intelligent controller provides integrated power management analytics to proactively detect failure before it occurs.



Access Expert Intelligent Controller NEW

Product Code: AX-MP1501

The MP1501 is an edge-capable intelligent controller that is expandable up to 8 downstream serial input/output modules and up to 16 MR62e network ready door controllers (for a total of 17 doors/openings). The feature rich MP1501 provides installers with a small footprint, cost effective dual card reader panel for controlling a single opening. Easy installation with Power-over-Ethernet Plus (PoE+) makes the high performance, Ethernet ready MP1501 a top choice for a single door controller.

Mercury MP4502 Intelligent Controller		Reader Interface			
Access Control	2,000,000 cardholder capacity 500,000 transaction buffer Supports up to 2 RS-485 IO protocols 255 access levels per cardholder Cardholder - 19 Digit (64 Bit) User ID with 15 digit PIN MAX Activation/Deactivation If/Then macro capabilities Anti-passback support Nested, area, hard, soft and timed forgiveness Adjustable cardholder capacity Supports up to 1024 inputs or 1024 outputs	Reader Power	12-24 VDC +/- 10% regulated, 600 mA maximum.		
	Door Control	Natively supports up to 4 readers and 2 openings and can support up to 32 additional RS-485 expansion modules for a maximum of 64 readers and openings.	Data Inputs	TTL compatible inputs, F/2F or 2-wire RS-485 standards supported	
General		Primary Power	12-24 VDC +/- 10%, 550mA maximum (reader and USB current not included)	RS-485 Mode	9,600 to 115,200 bps, asynchronous, half-duplex, 1 start bit, 8 data bits, and 1 stop bit. Maximum cable length: 2000 ft. (609.6 m)
	Reader Ports		600mA maximum (add 600 mA to primary power current)	LED Output	TTL levels, high > 3 V, Low < 0.5 V, 5 mA source/sink maximum
Micro USB Port	5 VDC, 500 mA maximum (add 270 mA to primary power current)	Buzzer Output	Open collector, 12 VDC open circuit maximum, 40 mA sink maximum	Cable Requirements	
Battery	Memory/Clock Backup: Super Capacitor (10 days). 3 Volt Lithium, type BR2330 or CR2330 slot available for additional capacity (CR2330 battery not included)	Power and Relays	1 twisted pair, 18 to 16 AWG	Ethernet	CAT-5, minimum
microSD Card	Format: microSD or microSDHC; 2GB to 8GB	Reader TTL	6-conductor, 18 AWG, 500 feet (150 m) maximum	Reader F/2F	4-conductor, 18 AWG, 500 feet (150 m) maximum
Host Communication	Ethernet: 10Base T/100Base-TX and micro USB port (2.0) with optional adapter: pluggable model USB2-OTGE100	Reader F/2F	4-conductor, 18 AWG, 500 feet (150 m) maximum	I/O Devices RS-485	1 twisted pair, shielded, 24 AWG, 120 ohm impedance, 2,000 feet (610 m) maximum
Serial I/O Device	Two each, 2-wire RS-485, 2,400 to 115,200 bps, asynchronous, half-duplex, 1 start bit, 8 data bits, and 1 stop bit	RS-485 I/O Devices	1 twisted pair, shield, 120 ohm impedance, 24 AWG, 4,000 ft. (1,219 m) maximum	Alarm Input	1 twisted pair, 30 ohms maximum, typically 22 AWG @ 1000 ft. (304.8 m)
Inputs	Eight unsupervised/supervised, standard EOL: 1k/1k ohm, 1%, ¼ watt. Two unsupervised dedicated for cabinet tamper and UPS fault monitoring.	Environmental		Temperature	Storage: -55° to 85° C Operating: 0° to 70° C
Output Relays	Four relays, Form C, NO 5 A @ 30 VDC resistive, NC 3 A @ 30 VDC resistive	Humidity	5 to 95% RHNC	Mechanical	
		Dimensions	8.0 in. (203mm) W x 6.0 in. (152mm) L x 1.0 in. (25mm) H	Weight	10.65oz (302 g) nominal, board only
		Compliance and Warranty		Product Compliance	UL294 Recognized, FCC Part 15 Class A, CE Compliant, RoHS (2011/65/EU & 2015/863), EU REACH (1907/2006), California Proposition 65, NIST Certified Encryption (in process)
		Warranty		Warranty	The product is warranted free from defects in material and workmanship under normal use and service with proper maintenance for one year from the date of factory shipment.

Mercury MP1501 Intelligent Controller		Cable Requirements	
Access Control	240,000 cardholder capacity 500,000 transaction buffer Supports total of 1 RS-485 IO protocol 255 access levels per cardholder Cardholder - 19 Digit (64 Bit) User ID with 15 digit PIN MAX Activation/Deactivation If/Then macro capabilities Anti-passback support Nested, area, hard, soft and timed forgiveness Adjustable cardholder capacity Supports up to 130 inputs and 130 outputs	Header	I/O Devices RS-485
	Door Control	Natively supports up to 2 readers and 1 opening and can support up to 8 additional RS-485 expansion modules for a maximum of 17 readers and openings.	Data
Power Input		PoE (12.95 W), compliant to IEEE 802.3af or PoE+ (25 W), compliant to IEEE 802.3at or 12 VDC +/- 10 %, 1.8 A maximum	Power and Relays
	Power Output	PoE: 12 VDC @ 625 mA including reader and AUX output * PoE+ or external 12 VDC: 12 VDC @ 1.25 A including reader and AUX output * * Excluding micro USB port	Ethernet
Micro USB Port		5 VDC maximum (deduct 270 mA from reader and Auxiliary Power output)	Reader TTL
Battery	Memory/Clock Backup: Super Capacitor (10 days). 3 Volt Lithium, type BR2330 or CR2330 slot available for additional capacity.	Reader F/2F	4-conductor, 18 AWG, 500 ft. (152 m) maximum
Host Communication	Ethernet: 10-BaseT/100Base-TX	Reader RS-485	1 twisted pair, shielded, 24 AWG, 120 ohm impedance, 2000 ft. (610 m) maximum
Inputs	Two unsupervised/supervised, Programmable End-of-Line resistors, 1k/1k ohm, 1%, ¼ watt standard. One unsupervised input dedicated for cabinet tamper	Alarm Input	1 twisted pair per input, 30 ohms maximum
	Output Relays	Two relays: Form-C contacts: 2 A @ 30 VDC, resistive	Alarm Output
Reader Interface		Environmental	
Reader Power	12 VDC ± 10 %: PoE, PoE+ or local power supply, 600 mA maximum	Temperature	Storage: -55° to 85° C Operating: 0° to 70° C
Data Inputs	Reader port 1: TTL compatible, F/2F or 2-wire RS-485 Reader port 2: TTL compatible or F/2F	Humidity	5 to 95% RHNC
LED Output	TTL compatible, high > 3 V, low < 0.5 V, 5 mA source/sink maximum	Mechanical	
Buzzer Output	Open collector, 12 VDC open circuit maximum, 40 mA sink maximum	Dimensions	5.5 in. (140 mm) W x 2.75 in. (70 mm) L x 0.96 in. (24 mm) H without bracket 5.5 in. (140 mm) W x 3.63 in. (92 mm) L x 1.33 in. (34 mm) H with bracket
		Weight	3.6 oz. (103 g) without bracket 4.43 oz. (125.5 g) with bracket
		Product Compliance	UL 294 Recognized ¹ , FCC Part 15 Class A, CE Compliant, RoHS (2011/65/EU & 2015/863), EU REACH (1907/2006), California Proposition 65, NIST Certified Encryption (in process)
		Warranty	The product is warranted free from defects in material and workmanship under normal use and service with proper maintenance for one year from the date of factory shipment.

¹ For UL, the Power Sourcing Equipment (PSE) such as a PoE or PoE+ enabled network switch and/or PoE or PoE+ power injectors must be UL Listed under UL 2948

*****Though not listed above, Access Expert maintains support for both the legacy Mercury LP and EP series controllers.



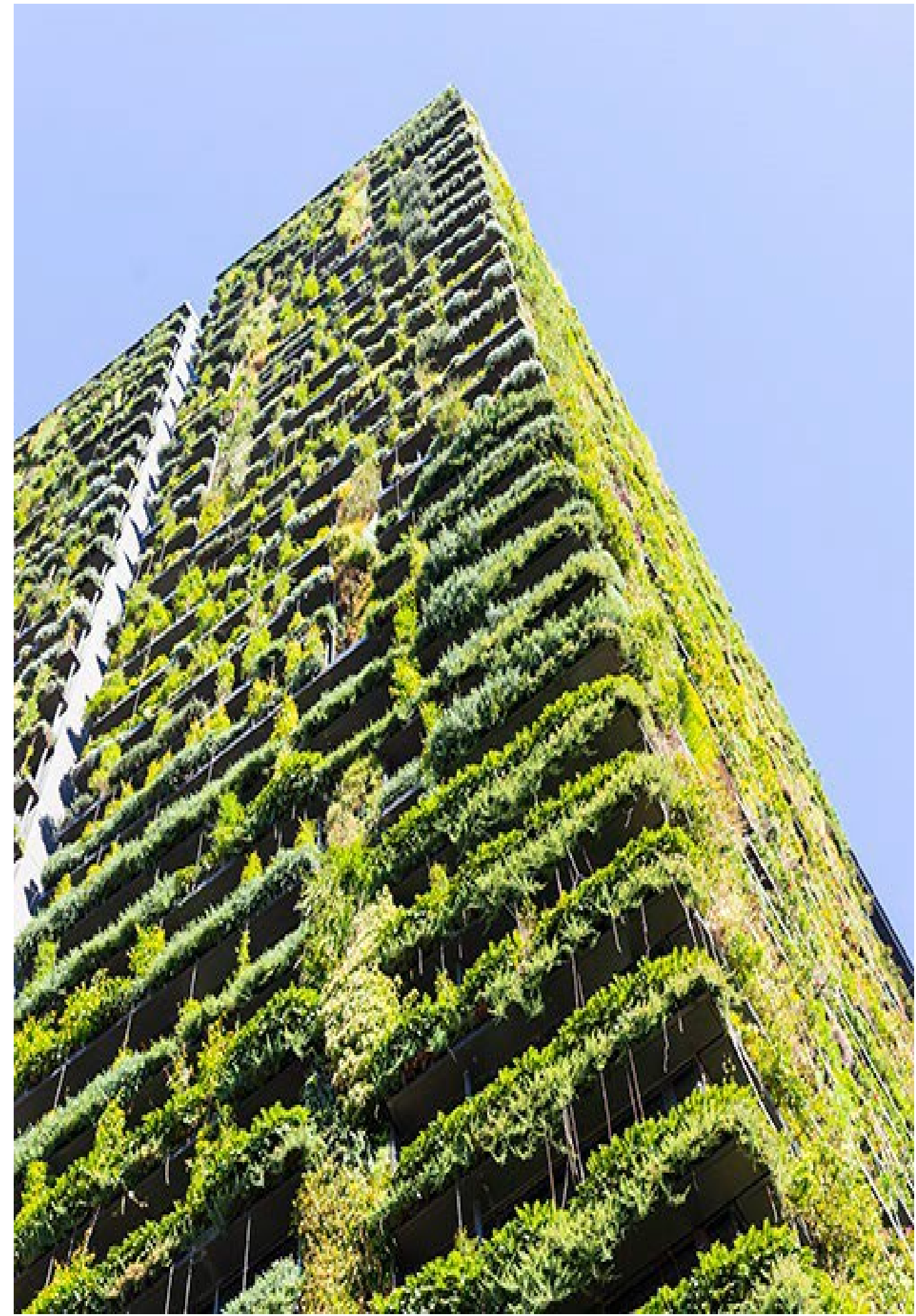
Access Expert Intelligent Controller NEW
 Product Code: AX-MP1502

The multi-port MP1502 is a dual card reader panel for controlling two connected doors and managing up to 64 doors/openings. Built on the Authentic Mercury platform, the intelligent controller uses on-board Ethernet port to connect to cloud via secured communications. The intelligent controller performs access control, alarm management and scheduled operations -- all in single package.

Mercury MP1502 Intelligent Controller	
Access Control	240,000 cardholder capacity 500,000 transaction buffer Supports total of 1 RS-485 IO protocols 255 access levels per cardholder Cardholder - 19 Digit (64 Bit) User ID with 15 digit PIN MAX Activation/Deactivation If/Then macro capabilities Anti-passback support Nested, area, hard, soft and timed forgiveness Adjustable cardholder capacity Supports up to 520 inputs or 516 outputs
Door Control	Natively supports up to 4 readers and 2 openings and can support up to 32 additional RS-485 expansion modules for a maximum of 64 readers and openings.
General	
Primary Power	12 to 24 VDC ± 10 %, 500 mA maximum (reader and USB ports not included)
Reader Port	600 mA maximum (add 600 mA to primary power current)
Micro USB Port	5 VDC, 500 mA maximum (add 270 mA to primary power current)
Battery	Memory/Clock Backup: Super Capacitor (10 days). 3 Volt Lithium, type BR2330 or CR2330 slot available for additional capacity. (CR2330 battery not included)
microSD Card	microSD or microSDHC; 2GB to 8GB
Host Communication	Ethernet: 10-BaseT/100Base-TX and USB port (2.0) with optional adapter; pluggable model USB2-OTGE100
Serial I/O Device	2-wire RS-485, 2,400 to 115,200 bps, asynchronous, half-duplex, 1 start bit, 8 data bits, and 1 stop bit
Inputs	Eight unsupervised/supervised, standard EOL: 1k/1k ohm, 1%, ¼ watt. Two unsupervised dedicated for cabinet tamper and UPS fault monitoring.
Output Relays	Four relays, Form C, NO 5 A @ 30 VDC resistive, NC 3 A @ 30 VDC resistive
Reader Interface	
Reader Power	12-24 VDC +/- 10% regulated, 600 mA maximum.
Data Inputs	TTL compatible, F/2F or 2-wire RS-485
RS-485 Mode	9,600 to 115,200 bps, asynchronous, half-duplex, 1 start bit, 8 data bits, and 1 stop bit. Maximum cable length: 2000 ft. (609.6 m)
LED Output	TTL levels, high>3 V, low<0.5 V, 5 mA source/sink maximum
Buzzer Output	Open collector, 12 VDC open circuit maximum, 40 mA sink maximum
Cable Requirements	
Power and Relays	1 twisted pair, 18 to 16 AWG
Ethernet	CAT-5, minimum
Reader TTL	6-conductor, 18 AWG, 500 feet (150 m) maximum
Reader F/2F	4-conductor, 18 AWG, 500 feet (150 m) maximum
Reader RS-485	1 twisted pair, shielded, 120 ohm impedance, 24 AWG, 2,000 ft. (610 m) max.
I/O Devices RS-485	1 twisted pair with drain wire and shield, 120 ohm impedance, 24 AWG, 4,000 ft. (1,219 m) maximum
Alarm Input	1 twisted pair, 30 ohms maximum typically 22 AWG @ 1000 ft. (304.8 m) maximum
Environmental	
Temperature	-55 to +85 °C, storage, 0 to +70 °C, operating
Humidity	5 to 95% RHNC
Mechanical	
Dimensions	8 in. (203.2 mm) W x 6 in. (152.4 mm) L x 1 in. (25 mm) H
Weight	9 oz. (255 g) nominal, board only
Compliance and Warranty	
Product Compliance	UL 294 Recognized, FCC Part 15 Class A, CE Compliant, RoHS (2011/65/EU & 2015/863), EU REACH (1907/2006), California Proposition 65, NIST Certified Encryption (in process)
Warranty	The product is warranted free from defects in material and workmanship under normal use and service with proper maintenance for one year from the date of factory shipment.

1 For UL, the Power Sourcing Equipment (PSE) such as a PoE or PoE+ enabled network switch and or PoE or PoE+ power injectors must be UL Listed under UL 294B

*****Though not listed above, Access Expert maintains support for both the legacy Mercury LP and EP series controllers.





Access Expert Intelligent Controller NEW

Product Code: AX-MP2500

The multi-port MP2500 controller managing up to 64 doors/openings. Built on the Authentic Mercury platform, the intelligent controller uses on-board Ethernet port to connect to cloud via secured communications. The intelligent controller performs access control, alarm management and scheduled operations -- all in single package.

Mercury MP2500 Intelligent Controller	
Access Control	600,000 cardholder capacity 500,000 transaction buffer Supports up to 2 RS-485 IO protocols 255 access levels per cardholder Cardholder - 19 Digit (64 Bit) User ID with 15 digit PIN MAX Activation/Deactivation If/Then macro capabilities Anti-passback support Nested, area, hard, soft and timed forgiveness Adjustable cardholder capacity Supports up to 1024 inputs or 1024 outputs
Door Control	Does not natively support any readers or openings. Supports up to 32 RS-485 expansion modules for a maximum of 64 readers and openings.
General	
Primary Power	12 to 24 VDC ± 10 %, 500 mA maximum (reader and USB ports not included)
Micro USB Port	5 VDC, 500 mA maximum (add 270 mA to primary power current)
Battery	Memory/Clock Backup: Super Capacitor (10 days). 3 Volt Lithium, type BR2330 or CR2330 slot available for additional capacity.
microSD Card	Format: microSD or microSDHC; 2GB to 8GB
Host Communication	Ethernet: 10-BaseT/100Base-TX and Micro USB port (2.0) with optional adapter; pluggable model USB2-OTGE100
Serial I/O Device	Two each: 2-wire RS-485, 2,400 to 115,200 bps, asynchronous, half-duplex, 1 start bit, 8 data bits, and 1 stop bit
Inputs	Two unsupervised dedicated for cabinet tamper and UPS fault monitoring
Cable Requirements	
Header	Alarm Input
Data	1 twisted pair, 30 ohms maximum
Power	1 twisted pair, 18 to 16 AWG
Ethernet	CAT-5, minimum
I/O Devices RS-485	1 twisted pair, shield, 120 ohm impedance, 24 AWG. 4,000 ft. (1,219 m) maximum cable length
Environmental	
Temperature	-55 to +85 °C, storage, 0 to +70 °C, operating
Humidity	5 to 95% RHNC
Mechanical	
Dimensions	5 in. (127 mm) W x 6 in. (152.4 mm) L x 1 in. (25 mm) H
Weight	4.1 oz. (115 gm) nominal, board only
Compliance and Warranty	
Product Compliance	UL 294 Recognized, FCC Part 15 Class A, CE Compliant, RoHS (2011/65/EU & 2015/863), EU REACH (1907/2006), California Proposition 65, NIST Certified Encryption (in process)
Warranty	The product is warranted free from defects in material and workmanship under normal use and service with proper maintenance for one year from the date of factory shipment.

*****Though not listed above, Access Expert maintains support for both the legacy Mercury LP and EP series controllers.





Door Controllers & I/O Modules

Access Expert Two Door Controller

Product Code: AX-MR52-S3(b)



The MR52 Series 3 is a two-door controller that has the ability to support up to 4 reader and the on-board flexibility to connect a wide range of security devices. The MR52 is easy to install and provides the required I/O for interfacing two card readers, eight general-purpose input monitor points and six control relays to any Authentic Mercury series intelligent controller.

At A Glance	
Number of Readers	4 Readers, 2 Doors
Supported Card Formats	OSDP, OSDP Secure Channel, FICAM government profiles, keypads, biometric readers, Wiegand, clock and data, magnetic stripe, F/2F and supervised F/2F reader technologies
Product Compliance	UL294 Recognized, FCC Part 15 Class A, CE Compliant, RoHS (2011/65/EU & 2015/863), EU REACH (1907/2006), California Proposition 65, NIST Certified Encryption
Encryption	AES 128/256 bit data encryption
Power Supply	
Primary Power	12-24 Vdc +/- 10%, 550mA maximum
Reader Power	Pass-through or 12 Vdc regulated 300mA each reader
Communication	
RS-485	RS-485, 2-wire, 4,000' (twisted pair with shield, Belden 9841)
Offline Operation	
Offline Access Modes	All Users, No Users, Unlock
Readers	
Reader Configurations	2 reader ports that can be independently configured for either Wiegand (up to 1024 bits configurable) or RS-485, allowing connection of up to 4 readers providing entry/exit control for two doors ** RS-485 reader port connections support configuration for OSDP protocol
Keypad	8-bit Mercury, 8-bit Dorado/HID, 4-bit HID
Outputs	
Output Relays	Six Form-C Relays: Normally open contact (NO): 5A @ 30 Vdc resistive. Normally closed contact (NC): 3A @ 30 Vdc resistive
Inputs	
Inputs	8 General Purpose: Programmable circuit type. 2 Dedicated: Tamper and Power Monitor
Dimensions	
Dimensions (L x W x H)	6.0" W x 8.0" L x 1.0" H (152mm W x 203mm L x 25mm H)
Weight	13.6 oz
Operating Conditions	
Temperature	0-70 °C operational, -55-85 °C storage
Humidity	5 to 95% RHNC
Other Items	
LED	One-wire bi-color LED or two-wire LED
Buzzer	Only with 'one-wire' LED

Access Expert Single Door Reader Interface

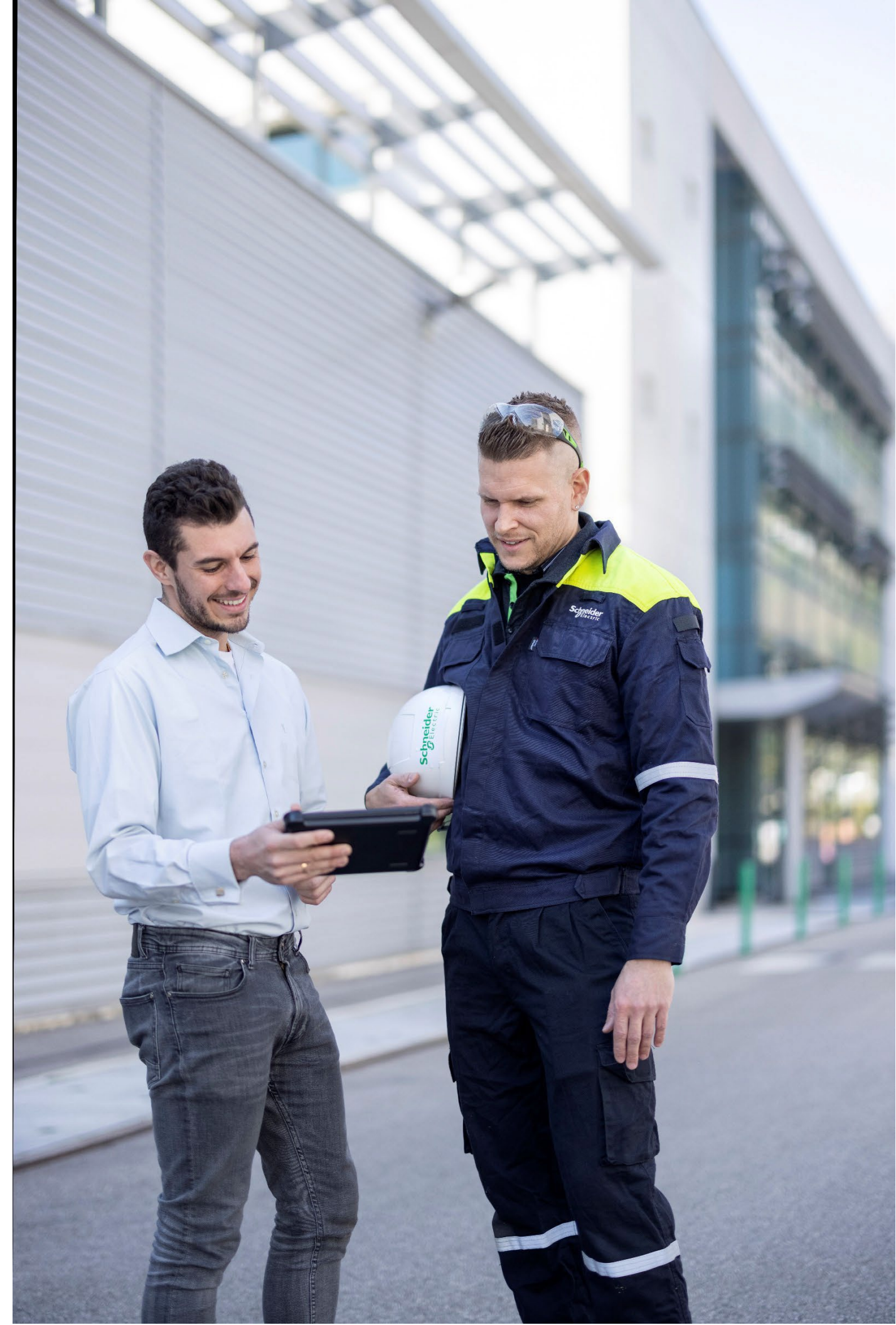
Product Code: AX-MR50-S3



The MR50 Series 3 is an enhanced SIO single card reader interface panel dedicated to individual door oversight and provides of all the I/O needed for controlling a single door. Each MR50 connects one card reader, two general-purpose input monitor points and two control relays for access control and security monitoring through an Authentic Mercury intelligent controller.

At A Glance	
Number of Readers	2 Readers, 1 Door
Supported Card Formats	OSDP, OSDP Secure Channel, FICAM government profiles, keypads, biometric readers, Wiegand, clock and data, magnetic stripe, F/2F and supervised F/2F reader technologies
Product Compliance	UL294 Recognized, FCC Part 15 Class A, CE Compliant, RoHS (2011/65/EU & 2015/863), EU REACH (1907/2006), California Proposition 65, NIST Certified Encryption
Encryption	AES 128/256 bit data encryption
Power Supply	
Primary Power	12-24 Vdc +/- 10%, 150mA maximum
Reader Power	Input voltage pass-through
Communication	
RS-485	RS-485, 2-wire, 4,000' (twisted pair with shield, Belden 9841)
Offline Operation	
Offline Access Modes	All Users, No Users, Unlock
Readers	
Reader Configurations	1 reader port that can be independently configured for either Wiegand (up to 1024 bits configurable) or RS-485, allowing connection of up to 2 readers providing entry/exit control for two doors ** RS-485 reader port connections support configuration for OSDP protocol
Keypad	8-bit Mercury, 8-bit Dorado/HID, 4-bit HID
Outputs	
Output Relays	Relay 1: Normally open contact (NO): 5A @ 30 Vdc resistive. Normally closed contact (NC): 3A @ 30 Vdc resistive. Relay 2: 2A @ 30 Vdc resistive
Inputs	
Inputs	2 General Purpose: Programmable circuit type 1 Dedicated: Tamper
Dimensions	
Dimensions (L x W x H)	2.75" L x 4.25" W x 1.0" H, (70mm L x 108mm W x 25.4mm H)
Weight	5.6 oz
Operating Conditions	
Temperature	0-70 °C operational, -55-85 °C storage
Humidity	5 to 95% RHNC
Other Items	
LED	One-wire bi-color LED or two-wire LED
Buzzer	Only with 'one-wire' LED

*****Though not listed above, Access Expert maintains support for the legacy Mercury MR series controllers.



Access Expert POE 2 Door Controller

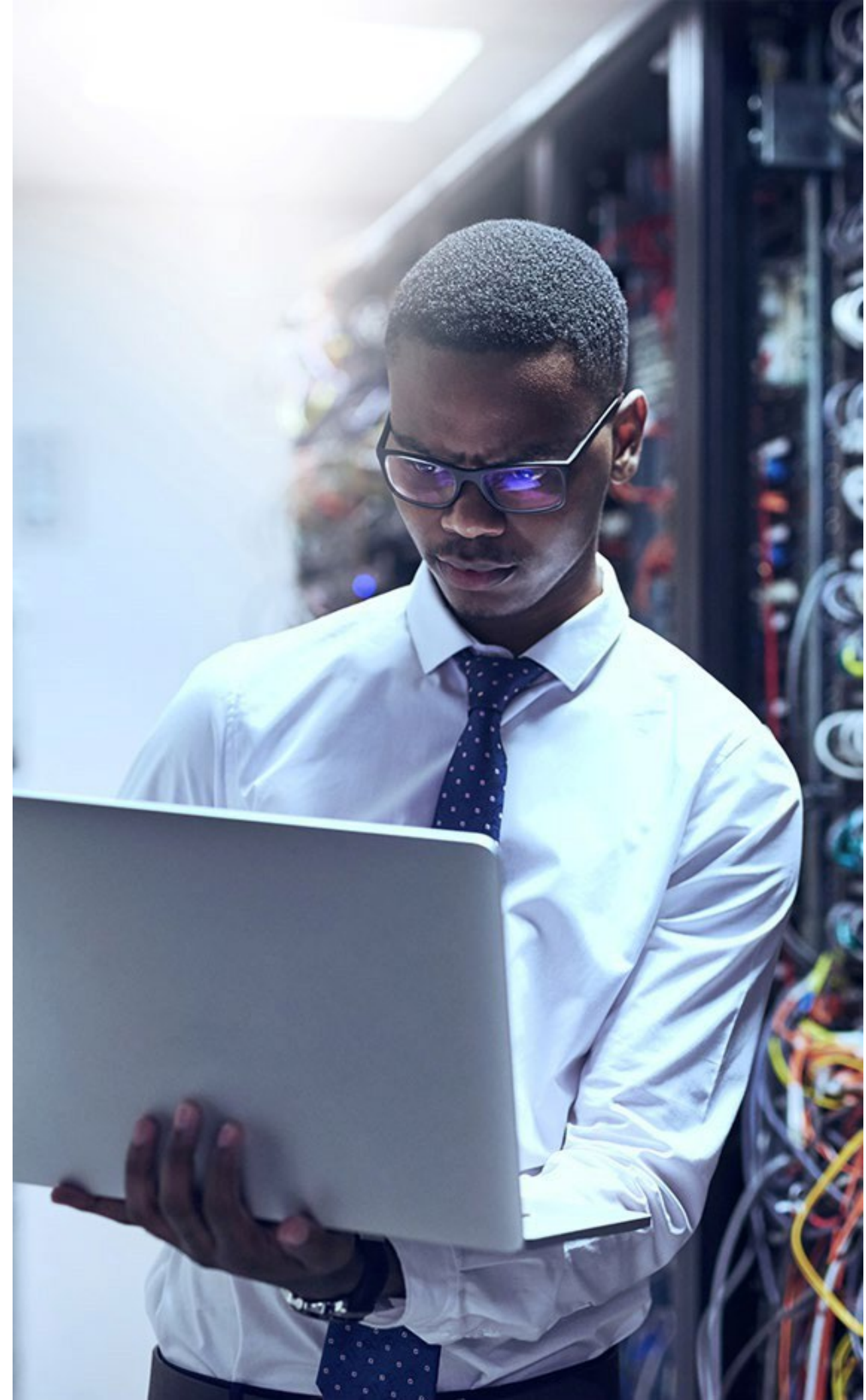
Product Code: AX-MR62e



The MR62e Series 3 is an IP-enabled interface module with on-board flexibility to connect a wide range of security devices. The MR62e is easy to install and provides the required I/O for interfacing four card readers using OSDP protocol, six general-purpose input monitor points and four control relays to any Authentic Mercury series intelligent controller.

At A Glance	
Number of Readers	4 Readers, 2 Door
Supported Card Formats	OSDP, OSDP Secure Channel, FICAM government profiles, keypads, reader technologies
Product Compliance	UL294 Recognized, FCC Part 15 Class A, CE Compliant, RoHS (2011/65/EU & 2015/863), EU REACH (1907/2006), California Proposition 65, NIST Certified Encryption
Encryption	TLS 1.2/1.1 or AES-256/128
Power Supply	
Power Input	PoE (12.95 W), compliant to IEEE 802.3af or PoE+ (25 W), compliant to IEEE 802.3at or 12 Vdc \pm 10 %, 1.7 A maximum
Reader Power	12 Vdc @ .5 A MAX
Power Output	PoE: Locks and Reader, combined: 12 Vdc @ .66 A MAX. PoE+ or 12 Vdc: Lock 12 Vdc @ 1 A MAX, Readers 12 Vdc @ .5 A MAX
Communication	
Ethernet	CAT 5 IPv4/6
Offline Operation	
Offline Access Modes	All Users, No Users, Unlock
Readers	
Reader Configurations	1 reader port that can be independently configured for either Wiegand (up to 1024 bits configurable) or RS-485, allowing connection of up to 2 readers providing entry/exit control for two doors ** RS-485 reader port connections support configuration for OSDP protocol
Keypad	8-bit Mercury, 8-bit Dorado/HID, 4-bit HID
Outputs	
Output Relays	Four relays, Form-C contacts rated at 2 A @ 30 Vdc
Inputs	
Inputs	Six unsupervised/supervised, End of Line resistors, 1k/1k ohm, 1%, ¼ watt standard
Dimensions	
Dimensions (L x W x H)	5.5 in. (140 mm) W x 2.75 in. (70 mm) L x 0.96 in. (24 mm) H without bracket 5.5 in. (140 mm) W x 3.63 in. (92 mm) L x 1.33 in. (34 mm) H with bracket
Weight	4 oz. (112 g) without bracket 5 oz. (142 g) with bracket
Operating Conditions	
Temperature	0-70 °C operational, -55-85 °C storage
Humidity	5 to 95% RHNC
Other Items	
LED	One-wire bi-color LED or two-wire LED
Buzzer	Only with 'one-wire' LED
Card Formats	Eight active card formats per intelligent controller Entire card number reported on invalid read 19 digit (64-bit) User ID and 15 digit PIN numbers maximum PIV, CAC, TWIC card compatible

*****Though not listed above, Access Expert maintains support for the legacy Mercury MR series controllers.



Access Expert Output Interface Panel

Product Code: AX-MR16OUT-S3



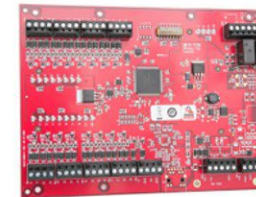
The multi-device MR16OUT Series 3 interface panel for OEMs is dedicated to point control and monitoring, providing 16 general-purpose outputs as Form C relay contacts. The MR16OUT also provides individually configurable parameters that can be set for timing and for fail-safe versus fail-secure modes.

At A Glance	
Point Control	Support "On," "Off," "Pulse" and "Repeating Pulse" commands.
Control Time Range	A pulse can range from .1 seconds to over 18 hours.
Encryption	AES 128/256 Data Encryption
Supervision	Configurable supervision values with Access Expert
Power Supply	
Primary Power	12-24 Vdc +/- 10%, 1100mA maximum
Communication	
RS-485	RS-485, 2-wire, 4,000' (twisted pair with shield, Belden 9841)
Outputs	
Output Relays	Sixteen Form-C Relays: Normally open contact (NO): 5A @ 30 Vdc resistive Normally closed contact (NC): 3A @ 30 Vdc resistive
Inputs	
Inputs	2 Dedicated: Tamper and Power Monitor
Dimensions	
Dimensions (L x W x H)	6.0" W x 8.0" L x 1.0" H (152mm W x 203mm L x 25mm H)
Weight	9 oz
Operating Conditions	
Temperature	0-70 °C operational, -55-85 °C storage
Humidity	5 to 95% RHNC

*****Though not listed above, Access Expert maintains support for the legacy Mercury MR series controllers.

Access Expert Input Interface Panel

Product Code: AX-MR16IN-S3



The MR16IN can be used for a variety of applications, including status annunciation and alarm monitoring applications such as lighting, heating/cooling, door and elevator control. Devices can also be activated by the condition of selected system devices, either locally or regionally, without host intervention.

At A Glance	
Command Control	Initiates commands by operator, by time schedules, or by events
Supervision	Configurable supervision values with Access Expert
Encryption	AES 128/256 Data Encryption
Power Supply	
Power Input	12-24 Vdc +/- 10%, 350mA maximum
Communication	
RS-485	RS-485, 2-wire, 4,000' (twisted pair with shield, Belden 9841)
Outputs	
Output Relays	Two Form-C Relays: Normally open contact (NO): 5A @ 30 Vdc resistive Normally closed contact (NC): 3A @ 30 Vdc resistive
Inputs	
Inputs	16 General Purpose: Programmable circuit type 2 Dedicated: Tamper and Power Monitor
Dimensions	
Dimensions (L x W x H)	6.0" W x 8.0" L x 1.0" H (152mm W x 203mm L x 25mm H)
Weight	9 oz
Operating Conditions	
Temperature	0-70 °C operational, -55-85 °C storage
Humidity	5 to 95% RHNC

Access Expert also has the ability to re-use many competitors control panels. Contact your local sales team for more information.

Access Expert Input Interface Panel Product

Code: AX-MR16IN-S3



The MR16IN can be used for a variety of applications, including status annunciation and alarm monitoring applications such as lighting, heating/cooling, door and elevator control. Devices can also be activated by the condition of selected system devices, either locally or regionally, without host intervention.

At A Glance	
Command Control	Initiates commands by operator, by time schedules, or by events
Supervision	Configurable supervision values with Access Expert
Encryption	AES 128/256 Data Encryption
Power Supply	
Power Input	12-24 Vdc +/- 10%, 350mA maximum
Communication	
RS-485	RS-485, 2-wire, 4,000' (twisted pair with shield, Belden 9841)
Outputs	
Output Relays	Two Form-C Relays: Normally open contact (NO): 5A @ 30 Vdc resistive Normally closed contact (NC): 3A @ 30 Vdc resistive
Inputs	
Inputs	16 General Purpose: Programmable circuit type 2 Dedicated: Tamper and Power Monitor
Dimensions	
Dimensions (L x W x H)	6.0" W x 8.0" L x 1.0" H (152mm W x 203mm L x 25mm H)
Weight	9 oz
Operating Conditions	
Temperature	0-70 °C operational, -55-85 °C storage
Humidity	5 to 95% RHNC

Access Expert also has the ability to re-use many competitors control panels. Contact your local sales team for more information.

*****Though not listed above, Access Expert maintains support for the legacy Mercury MR series controllers.

Access Expert Power Supplies

Product Code: AXV-xx-xxxxxxx



Access Expert harnesses the power provided by industry leader Life Safety Power (LSP). These pre-configured power supplies are specifically designed to support various configurations from 4 to 16 doors in a single enclosure which is pre-drilled to accept the Access Expert controllers. Each power supply includes fire alarm interrupt, battery charging, breaker style fuses and can be configured to support single or dual voltages (12V/24V). An optional network connection can be added which enables the power supplies to be remotely monitored and managed as well as integrated into Access Expert.

Helping to drive efficiency into your project, the AXV panels are designed to consume 60% less wall space from other systems and can be installed 40% faster. With built-in fire alarm connections, dedicated battery charging circuits, programmable fault delays, the AXV panels not only look great, but they deliver industry leading features in a standardized and efficient way.

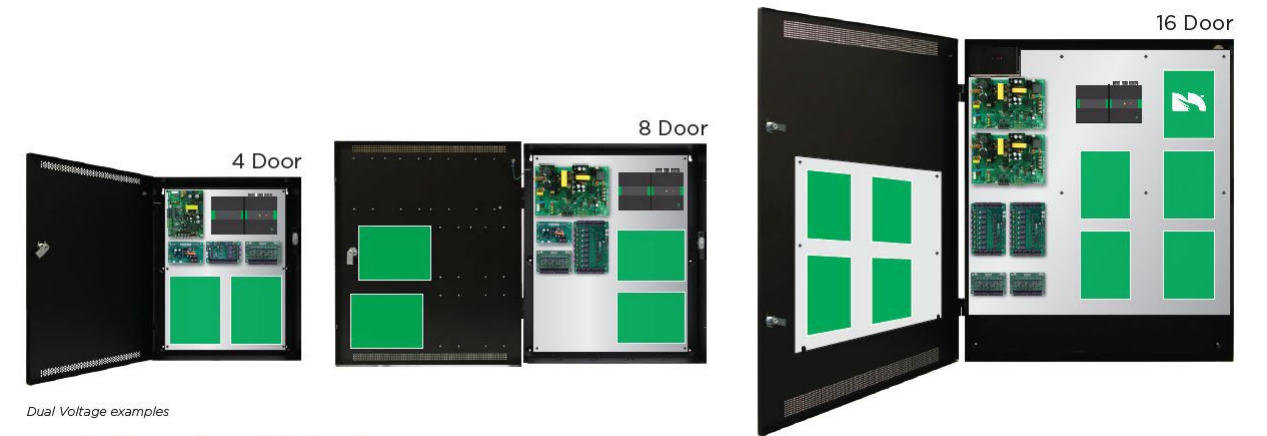
Network connected version deliver a powerful web interface that allows remote control, status, and monitoring of the systems performance as well as various reporting options and alert notifications. Additionally, the network connected versions enable integration with Access Expert which allows customers to monitor inputs and outputs, and control outputs.

Standard Single and Dual Voltage

Doors	Voltage	Model Number	Power	Outputs	Enclosure Size
4 Door	Single	AXV-75-4DRE2M	6A/12V (3A/24V)	8 Auxiliary	20 X 16 X 4.5
8 Door	Single	AXV-150-8DRE4M1	12A/12V (6A/24V)	8 Auxiliary	24 X 20 X 4.5
16 Door	Single	AXV-150-16DRE4M1	12A/12V (6A/24V)	16 Auxiliary	24 X 20 X 4.5
16 Door	Single	AXV-150-16DRE6M1	12A/12V (6A/24V)	16 Auxiliary	30 X 23 X 6.5
16 Door	Single	AXV-150-16DRE8M1	12A/12V (6A/24V)	16 Auxiliary	36 X 30 X 4.5
4 Door	Dual	AXV-75D-4DRE2M	2A/12V and 2A/24V	8 Auxiliary / 4 Control	20 X 16 X 4.5
8 Door	Dual	AXV-150D-8DRE4M1	4A/12V and 4A/24V	8 Auxiliary / 8 Control	24 X 20 X 4.5
16 Door	Dual	AXV-400D-16DRE6M1	12A/12V and 10A/24V	16 Auxiliary / 16 Control	30 X 23 X 6.5
16 Door	Dual	AXV-400D-16DRE8M1	12A/12V and 10A/24V	16 Auxiliary / 16 Control	36 X 30 X 4.5

Networked Single and Dual Voltage

Doors	Voltage	Model Number	Power	Outputs	Enclosure Size
4 Door	Single	AXV-75-4DRE2MN	6A/12V (3A/24V)	8 Auxiliary	20 X 16 X 4.5
8 Door	Single	AXV-150-8DRE4M1N	12A/12V (6A/24V)	8 Auxiliary	24 X 20 X 4.5
16 Door	Single	AXV-150-16DRE4M1N	12A/12V (6A/24V)	16 Auxiliary	24 X 20 X 4.5
16 Door	Single	AXV-150-16DRE6M1N	12A/12V (6A/24V)	16 Auxiliary	30 X 23 X 6.5
16 Door	Single	AXV-150-16DRE8M1N	12A/12V (6A/24V)	16 Auxiliary	36 X 30 X 4.5
4 Door	Dual	AXV-75D-4DRE2MN	2A/12V and 2A/24V	8 Auxiliary / 4 Control	20 X 16 X 4.5
8 Door	Dual	AXV-150D-8DRE4M1N	4A/12V and 4A/24V	8 Auxiliary / 8 Control	24 X 20 X 4.5
16 Door	Dual	AXV-400D-16DRE6M1N	12A/12V and 10A/24V	16 Auxiliary / 16 Control	30 X 23 X 6.5
16 Door	Dual	AXV-400D-16DRE8M1N	12A/12V and 10A/24V	16 Auxiliary / 16 Control	36 X 30 X 4.5



Dual Voltage examples



Schneider Electric HID Range



Schneider Electric HID® Signo™ Readers

HIDSigno™ is the new signature line of physical access control readers from HID Global that are brand labeled specifically for Schneider Electric.





20

40K

20K

The OSDP protocol improves interoperability and adds scalability, flexibility, and ease of implementation. OSDP with Secure Channel offers additional security with AES-128 encryption and predefined key management and authentication.

Out-of-the-box support for OSDP Secure Channel Protocol for encrypted bidirectional communication between the reader and door controller. Delivering proven interoperability through rigorous third-party testing, HID Signo Readers are SIA OSDP Verified.

	Application	Connection	Upgrade/Transition (Seos +iClass+Prox)	Greenfield (Seos Only)
	Signo 20 - Ideal for mounting on narrow door frames, turnstiles, elevators or anywhere a small footprint is desired	Pigtail	20NKS00000000SE01	20NKS0100001HSE01
		Terminal Strip	20TKS00000000SE01	20TKS0100001HSE01
	Signo 20K—Ideal for mounting on narrow door frames, turnstiles, elevators or anywhere a small footprint is desired, supports keypad	Pigtail	20KNKS00000000SE01	20KNKS0100001HSE01
		Terminal Strip	20KTKS00000000SE01	20KTKS0100001HSE01
	Signo 40—Ideal for mounting on classic single gang back boxes	Pigtail	40NKS00000000SE01	40NKS0100001HSE01
		Terminal Strip	40TKS00000000SE01	40TKS0100001HSE01
	Signo 40K—Ideal for mounting on classic single gang back boxes, supports keypad	Pigtail	40KNKS00000000SE01	40KNKS0100001HSE01
		Terminal Strip	40KTKS00000000SE01	40KTKS0100001HSE01

Additional HID Signo Reader Models

Schneider Electric Format/ MOB	Signo Part #	Signo part Description
Andover 37-Bit Indala Readers	40NKSO000038ASE01	HID Signo 40, pigtail, Standard profile, Andover 37 format
	20NKSO000038ASE01	HID Signo 20, pigtail, Standard profile, Andover 37 format
	40KNKS0000038BSE01	HID Signo 40K, keypad & pigtail, Standard profile Andover 37 format
	40KNKS0000038CSE01	HID Signo 40K, keypad & pigtail, Standard profile Andover 37 format, 8 Bit, CSN 32 Bit
	40KNKS0000038DSE01	HID Signo 40K, keypad & pigtail, Standard profile Andover 37 format, 26 Bit
CSI Indala Readers	40KNKS0000038FSE01	HID Signo 40K, keypad & pigtail, Standard profile, CSI format
	20NKSO000038ESE01	HID Signo 20, pigtail, Standard profile, CSI format
	40NKSO000038ESE01	HID Signo 40, pigtail, Standard profile, CSI format
ESMI 27-Bit Indala Readers	20KNKS0000039WSE01	HID Signo 20K, keypad & pigtail, Standard profile, ESMI 27 format
	20NKSO000039WSE01	HID Signo 20, pigtail, Standard profile, ESMI 27 format
	40KTKS0000041PSE01	HID Signo 40K, terminal, Standard profile ESMI format, mobile enabled MOB0145
Norway Mobile Enabled Readers	40KTKS0000041RSE01	HID Signo 40K, keypad & terminal, Standard profile Security Expert format, mobile enabled MOB0145
	20NKSO00003A0SE01	HID Signo 20, pigtail, Standard profile, mobile enabled MOB0145
	20KNKS000003A0SE01	HID Signo 20K, keypad & pigtail, Standard profile, mobile enabled MOB0145
Finland Mobile Enabled Readers	20NKSO00008M2SE01	HID Signo 20, pigtail, Standard profile, ESMI 27 format, mobile enabled MOB00028
	40KNKS000008M2SE01	HID Signo 40K, keypad & pigtail, Standard profile, ESMI 27 format, mobile enabled MOB00028
	20TKS000008M2SE01	HID Signo 20, terminal, Standard profile, ESMI 27 format, mobile enabled MOB00028
	40KNKS0000099FSE01	HID Signo 40K, keypad & pigtail, Standard profile, ESMI 29 format, mobile enabled MOB00028
	20NKSO0000099FSE01	HID Signo 20, pigtail, Standard profile, ESMI 29 format, mobile enabled MOB00028

HID Credentials

To go along with HID Signo readers Schneider Electric offers the latest credential technology from HID with both iClass high frequency credentials and Seos top-tier security credentials for both greenfield (13.56MHz only) and migration projects (13.56MHz +125kHz)

	Seos™	Seos + Prox	iClass	iClass + Prox
Base Part Number	5005 for 16K card 5006 for 8K card	5105 for 16K card 5106 for 8K card	200 Standard PVC 210 40% Polyester / PVC	212 40% Polyester / PVC
Frequently Ordered Part Number	5006PGGMN 5006PGGNN	5106RGGMNM 5105RGGMNN	2100PGGMN 2000PGGMN	2120BGGMNN 2120BGGMNM
Application				
Security Level	Top-Tier Security Multi-Application Credentials	Top-Tier Security Multi-Application Credentials	High Security contactless smart card credentials	High-frequency contactless smart card credentials
Project Type (Greenfield or Transition)	Single technology Cards good for new installations	Multi technology Cards to Support Secure Migrations	Single technology Cards for new installations	Multi technology Cards to Support Secure Migrations
Operating Frequency				
13.56MHz	✓	✓	✓	✓
125kHz	✗	✓	✗	✓
EEPROM Memory				
Memory	2KB	1KB	1KB	363 Bits
Number of Applications	Unlimited	N/A	N/A	N/A
Files per Application	32	N/A	N/A	N/A
Number of Sectors	N/A	16	16	N/A
Write Endurance	500,000	200,000	200,000	100,000

Above table is not the complete list of HID credential part numbers offered by Schneider Electric. Please contact local sales for additional references availability.



HID FastCard

Product Code: 5006-FastCard

Helping your orders and projects go faster, Schneider Electric has released a new Fast Card process based upon the 5006PGCMN card from HID. Geared towards those projects which are immediate, quick turn and not needing specific configurations, the Fast Cards are stocked items which enables over-night delivery when needed.

Strong Authentication	Increased Interoperability	Technology Independent Security	Heightened Privacy Protection
First enterprise-ready converged card for securing physical access as well as access to IT resources.	Open, standards-based solution supports future technologies and can store data for multiple applications.	Multi-layered security supports the portable Secure Identity Object (SIOs®) data model.	No traceable identifiers exchanged during card sessions, preventing data associated to a card from being divulged or cloned.

FastCard Helps Save Time & Reduce Cost		
No order form required and no longer having to track site code and card format details	Faster delivery with Made to Stock (MTS) cards that are ready to go	Grab & Go meaning no need to specify the next card range, tracked by HID to ensure no card duplication

Fast Card Features			
37-Bit Format	8K Memory	AES-128 bits cryptographic algorithms	Printed card numbering
Supports ISO/IEC 7810, 7816 and 14443A contactless card standards	13.56 MHz	3-4" read range	Based upon HID's 5006xx 8K card





Readers and Credentials

Schneider Electric Readers and Credentials

Security Expert Readers



The Security Expert reader range provides a complete multi-technology smart card RFID solution. Compatible with all Wiegand capable control systems and incorporating RS-485 communication, Multi-Technology Readers allow rapid deployment of secure technology in any environment.

Sleek and stylish, and with a range of optional features, the Multi-Technology Reader series has a solution for everyone. Available in three sizes, multiple card capabilities, with an optional keypad, and in your choice of black or white, you can select the model to fit your needs and decor.

The OSDP protocol improves interoperability and adds scalability, flexibility, and ease of implementation. OSDP with Secure Channel offers additional security with AES-128 encryption and predefined key management and authentication.

Security Expert Readers have gone through extensive third party testing to ensure proven interoperability and are SIA OSDP Verified.



Mullion Reader



Mullion Reader	117 x 46 x 18mm (4.61 x 1.81 x 0.71")			
	Keypad	125kHz	MIFARE/ DESFire/ NFC	Bluetooth® Technology
SX-DRD-SB Black Smart Card Reader		✓	✓	
SX-DRK-SB Black Smart Card Reader with Keypad	✓	✓	✓	
SX-DRK-SB-BT Black Smart Card Reader with Keypad and Bluetooth® Wireless Technology	✓	✓	✓	✓
SX-DRK-SW-BT White Smart Card Reader with Keypad and Bluetooth® Wireless Technology	✓	✓	✓	✓
SX-RD-SB Black 13.56MHz Smart Card Reader			✓	
SX-RD-SB-BT Black Smart Card Reader with Bluetooth Technology			✓	✓
SX-RD-SW White 13.56MHz Smart Card Reader			✓	
SX-RK-SB Black 13.56MHz Smart Card Reader with Keypad	✓		✓	
SX-RK-SW White 13.56MHz Smart Card Reader with Keypad	✓		✓	

Wallplate Readers



Wallplate Reader	117 x 75x 18mm (4.61 x 2.95 x 0.71")			
	Keypad	125kHz	MIFARE/ DESFire/ NFC	Bluetooth® Technology
SX-DRD-SB Black Smart Card Reader		✓	✓	
SX-DRK-SB Black Smart Card Reader with Keypad	✓	✓	✓	
SX-DRK-SB-BT Black Smart Card Reader with Keypad and Bluetooth® Wireless Technology	✓	✓	✓	✓
SX-DRK-SW-BT White Smart Card Reader with Keypad and Bluetooth® Wireless Technology	✓	✓	✓	✓
SX-RD-SB Black 13.56MHz Smart Card Reader			✓	
SX-RD-SW White 13.56MHz Smart Card Reader			✓	
SX-RK-SB Black 13.56MHz Smart Card Reader with Keypad	✓		✓	
SX-RK-SW White 13.56MHz Smart Card Reader with Keypad	✓		✓	



Mini Readers



Mini Reader	85 x 46 x 17mm (3.35 x 1.81 x 0.67")			
	Keypad	125kHz	MIFARE/ DESFire/ NFC	Bluetooth® Technology
SX-DRD-SB Black Smart Card Reader			✓	
SX-DRK-SB Black Smart Card Reader with Keypad			✓	
SX-DRK-SB-BT Black Smart Card Reader with Keypad and Bluetooth® Wireless Technology			✓	✓
SX-DRK-SW-BT White Smart Card Reader with Keypad and Bluetooth® Wireless Technology			✓	✓
SX-RD-SB Black 13.56MHz Smart Card Reader		✓	✓	✓



Multitechnology reader

Sleek and stylish, and with a range of optional features, the Schneider Electric Multi-Technology Reader series has a solution for everyone. This series is available in three sizes, with keypad options and multiple card capabilities, so you can select the model to fit your needs.

Mullion Reader				
	Keypad	125kHz	MIFARE/ DESFire/ NFC	Bluetooth® Technology
SX-DRK-SB-BT-L Black Mullion Smart Card Reader with Keypad and Bluetooth® Wireless Technology	✓	✓	✓	✓
SX-RD-SB-BT-L Black 13.56MHz Mullion Smart Card Reader with Bluetooth® Wireless Technology			✓	✓
SX-RK-SB-L Black 13.56MHz Mullion Smart Card Reader with Keypad	✓		✓	
SX-RD-SB-L Black 13.56MHz Mullion Smart Card Reader			✓	
Wallplate Reader				
SX-DRK-XB-BT-L Black Wallplate Smart Card Reader with Keypad and Bluetooth® Wireless Technology	✓	✓	✓	✓
Mini Reader				
SX-RD-MB-BT-L Black 13.56MHz Mini Smart Card Reader with Bluetooth® Wireless Technology			✓	✓

Technical Specifications

Power Supply	
Operating Voltage	12VDC (9.5 to 14VDC)
Operating Current	Mullion Reader: 254mA (Peak, Reading) Wallplate Reader: 298mA (Peak, Reading) Mini Reader: 203mA (Peak, Reading)

*Available in Non-UL countries only

Technical Specifications

Communications	
Card Read Range	MIFARE 60mm (2.36") * DESFire EV1 ISO 15mm (0.6") * 125kHz Clamshell 40mm (1.57") †
Tag Read Range	MIFARE 30mm (1.2") * DESFire EV1 6mm (0.23") * 125kHz 25mm (0.98") †
Wiegand Interface	Multiple format 26 or 34 Bit data 0 and data 1, card defined
Frequency	13.56 MHz ISO/IEC 14443 Type A * 125KHz pulse width modulated †
Multi Conductor Cable	Wiegand: 22Awg alpha 5196, 5198, 18Awg alpha 5386, 5388. Max Distance 150m (492ft) Module comms/RS485: Belden 9842 or equivalent. Max distance 900m (3000ft)
OSDP Communication	OSDP standard 2.1.5 with Secure Channel Protocol ** / ***

Bluetooth® Wireless Technology	
Bluetooth® Read Range	Proximity mode: up to 0.5m (1.6ft) Configurable ** Action unlock (shake): up to 5m (16.4ft) Configurable **
Bluetooth® Electronic Credential Transmission Technology	NRF8001 Bluetooth® version 4.0 compliant Proprietary data exchange protocol. AES128 Encrypted Reader App Version: 1.04.175 and above Credentials can be distinguished by unique site code and card number
Bluetooth® Wireless Device	Security Expert Mobile 1.0.x

NFC	
NFC Read Range	Up to 60mm ***
NFC (Near-field communication) electronic credential transmission technology	Android 4.4 or above, with phones which support ISO7816-4 Proprietary Secured DESFire credential Credential is AES-256 (NIST certified AES algorithm) Reader App Version: 1.04.175 and above Credentials can be distinguished by unique site code and card number
NFC Wireless Device	Security Expert Mobile 1.0.x

Operating Conditions	
Environment IP Rating	IP65
Operating Temperature	UL/ULC -35° to 66°C (-31° to 151°F) : EU EN -40° to 70°C (-40° to 158°F)
Storage Temperature	-10° to 85°C (14° to 185°F)
Mean Time Between Failures (MTBF)	520,834 hours (calculated using RFD 2000 (UTE C 80-810) Standard)

Dimensions	
Reader Dimensions (H x W x D)	Mullion Reader: 117 x 46 x 18mm (4.61 x 1.81 x 0.71") Wallplate Reader: 117 x 75x 18mm (4.61 x 2.95 x 0.71") Mini Reader: 85 x 46 x 17mm (3.35 x 1.81 x 0.67")

Reader Weights	Net Weight	Gross Weight
Mullion Reader	110g (3.9oz)	130g (4.6oz)
Mullion Reader 3.5m	270g (9.5oz)	350g (12.3oz)
Wallplate Reader	160g (5.6oz)	190g (6.7oz)
Wallplate Reader 3.5m	320g (11.3oz)	390g (13.8oz)
Mini Reader	80g (2.8oz)	100g (3.5oz)
Mini Reader 3.5m	240g (8.5oz)	300g (10.6oz)

* Applies to MIFARE/DESFire and MultiTechnology models only

† Applies to 125kHz and MultiTechnology models only

** Applies to Bluetooth® wireless technology enabled models only

*** Applies to NFC capable models only

Security Expert Credentials

Mobile Credentials	Fast Track Credentials	Made-to-Order Credentials	Encoder Client
Virtual Credentials <ul style="list-style-type: none"> Peace of Mind with end-to-end encryption Streamline credential management with a simple and more cost-effective approach with our mobile credential portal Convenient user experience by enabling card-free mobile access 	Plug & Play Credentials <ul style="list-style-type: none"> Peace of Mind with end-to-end encryption Save Time with simplified ordering process without tracking card info Plug & Play preprogrammed credentials for most common applications 	Customer/Site Specific Credentials <ul style="list-style-type: none"> Peace of Mind with end-to-end encryption Simplified Reordering process with CP# labeling on credentials Custom Programming to meet site specific application and security needs 	Credentials On-Demand <ul style="list-style-type: none"> Peace of Mind with end-to-end encryption Locally Encode credentials to quickly replenish low stock Custom Programming to meet site specific application and security needs
Factory Managed	Factory Managed	Factory Managed	Customer Managed

Mobile Credentials

Product Code: SX-MCR

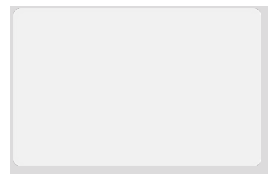
Use your smartphone or mobile device as your access credential for maximum convenience using Bluetooth®, NFC, or Shake to Unlock. With support for most modern iOS and Android devices, you can present a mobile credential to a reader to unlock the door. The mobile credential is associated to a user record in SP-C-WEB or Security Expert and authenticated by a secure cloud based server.

Fast Track Credentials

As part of the ISO card offering from Security Expert, we also offer a simple and convenient smart card RFID solution. EcoStruxure Security Expert Fast Track Credentials help system integrators who want to save time ordering cards by removing order complexity and providing faster delivery times with Made-to-Stock cards. Communications and other technical specifications are the same as listed above.

Dimensions	EcoStruxure Security Expert Fast Track Credentials (MIFARE DESFire EV2)
Ordering Code	SX-ISO-FT-2K (2KB memory) SX-ISO-FT-4K (4KB memory)
Technology	
MIFARE DESFire (13.56MHz)	✓
MIFARE (13.56MHz)	✗
125kHz	✗

Schneider Electric ISO Graphic Printable Card



The ISO Graphic Printable Card provides a complete multi-technology smart card RFID solution. Available with either 125kHz or 13.56MHz technology, or as a multi technology card that combines both capabilities, delivering maximum compatibility while providing a path forward to the latest technology. Generic Wiegand output provides flexibility and seamless integration with any access control solution.

Technical Specifications

	ISO Graphic Printable MIFARE DESFire EV2	ISO Graphic Printable MIFARE DESFire / 125kHz	ISO Graphic Printable MIFARE	ISO Graphic Printable MIFARE / 125kHz HID	ISO Graphic Printable 125kHz
Ordering Code	SX-ISO-DF-2K SX-ISO-DF-4K SX-ISO-DF-8K	SX-ISO-DF-LF	SX-ISO-MF	SX-ISO-MF-HID	SX-ISO-LF
Technology					
MIFARE DESFire	✓	✓	✗	✗	✗
MIFARE	✗	✗	✓	✓	✗
125kHz	✗	✓	✗	✓	✓
Operating Frequency					
13.56MHz	✓	✓	✓	✓	✗
125kHz	✗	✓	✗	✓	✓
EEPROM Memory Conditions					
Memory	2KB / 4KB / 8KB	2KB	1KB	1KB	363 Bits
Number of Applications	Unlimited	28	N/A	N/A	N/A
Files per Application	32	32	N/A	N/A	N/A
Number of Sectors	N/A	N/A	16	16	N/A
Write Endurance	500,000	500,000	200,000	200,000	100,000
Communications					
RF Interface	ISO/IEC 14443A-4	ISO/IEC 14443A-4	ISO/IEC 14443A-3	ISO/IEC 14443A-3	ISO/IEC 11784/11785
Baud Rate	848 kbit/s	848 kbit/s	106 kbit/s	106 kbit/s	106 kbit/s
Typical Maximum Read Range *	15mm (0.6")	40mm (1.57")	60mm (2.36")	60mm (2.36")	40mm (1.57")
Common Criteria Certification					
Compliance	EAL5+	EAL4+	✗	✗	✗
Write Endurance	500,000	500,000	200,000	200,000	100,000
Features					
Card Construction	Thin, flexible white high gloss polyvinyl chloride (PVC) laminate				
Card Marking	Laser engraving (optional)				
Programming	Factory or field				
Dimensions					
Dimensions	85.7 x 54.0 x 0.76 mm (3.375 x 2.125 x 0.3")				
Weight	6g (0.20oz)				
Operating Conditions					
Operating Temperature	-40° to 50°C (-40° to 122°F)				
Operating Humidity	5%-95% Non-condensing				



Schneider Electric Proximity Key Tag

The Schneider Electric Proximity Key Tag provides a complete multi technology smart RFID solution. Available with 125kHz or 13.56MHz technology, or as a multi technology tag combining both, it delivers maximum compatibility while providing a path forward to the latest technology.

An extremely durable compact design offers the ultimate in reliability and convenience, while the IP68 rating means these tags are resistant to heat, pressure and chemicals, making them suitable for the harshest environments.

Technical Specifications

	MIFARE DESFire EV2	MIFARE	MIFARE / 125kHz HID	125kHz
Ordering Code	SX-TAG-DF-B	SX-TAG-MF-B SX-TAG-MF-W	SX-TAG-MF-HID	SX-TAG-LF
Technology				
MIFARE DESFire	✓	✗	✗	✗
MIFARE	✗	✓	✓	✗
125kHz	✗	✗	✓	✓
Operating Frequency				
13.56MHz	✓	✓	✓	✗
125kHz	✗	✗	✓	✓
EEPROM Memory				
Memory	2KB	1KB	1KB	363 Bits
Number of Applications	Unlimited	N/A	N/A	N/A
Files per Application	32	N/A	N/A	N/A
Number of Sectors	N/A	16	16	N/A
Write Endurance	500,000	200,000	200,000	100,000

Technical Specifications

	MIFARE DESFire EV2	MIFARE	MIFARE / 125kHz HID	125kHz
Communications				
RF Interface	ISO/IEC 14443A-4	ISO/IEC 14443A-3	ISO/IEC 14443A-3	ISO/IEC 11784/11785
Baud Rate	848 kbit/s	106 kbit/s	106 kbit/s	106 kbit/s
Typical Maximum Read Range *	6mm (0.23")	30mm (1.2")	30mm (1.2")	25mm (0.98")
Common Criteria Certification				
Compliance	EAL5+	✗	✗	✗
Features				
Tag Construction	Thin PA6 overmolded plastic			
Tag Marking	Laser engraving (optional)			
Programming	Factory or field			
Dimensions				
Dimensions	45 x 30 x 2.4 mm (1.77 x 1.18 x 0.093")			
Weight	3g (0.10oz)			
Operating Conditions				
Operating Temperature	-40° to 85°C (-40° to 185°F)			
Storage Temperature	-35° to 85°C (-31° to 185°F)			
Environmental Rating	IP68			



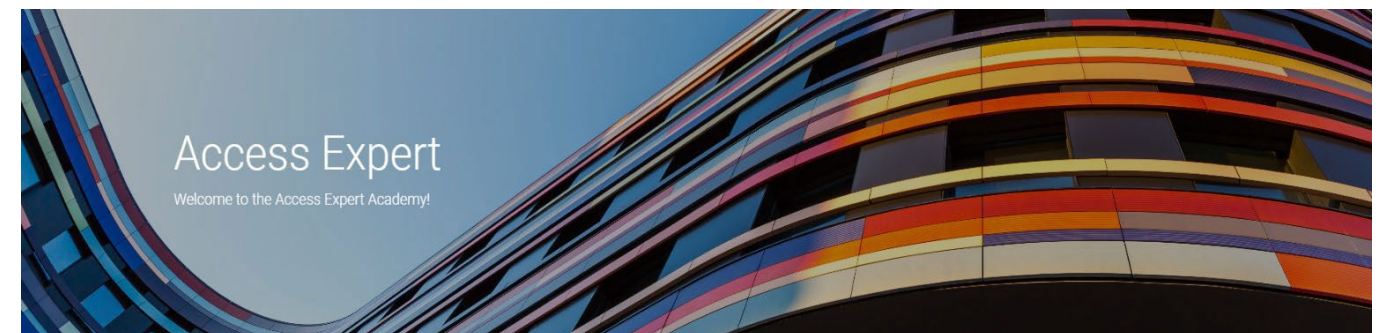
Training

Access Expert Training

Product Code: Various

Access Expert certification process is easy and straight forward. No longer do you have to take time out of the field, travel to a training center then travel back home after a week's work of classes and working all night catching up on calls and emails. The Access Expert Academy is online, self-paced and can even be accessed from your mobile device. Your training accounts remain active and accessible meaning a refresher is never more than a click away and the modules can even be accessed while on the job site.

At A Glance	
AX-ATC1V3	<p>Technical Certification: This course is the starting point for Technical Certification. This self paced, online course includes over 50 modules to help ensure you are ready to deploy and support your Access Expert Customers. The training includes (1) hosted instance which is licensed with 4 Readers, 4 Cameras, Visitor Management, Custom Forms, ID Badging, and LDAP.</p> <p>These training instances can be expanded to include other optional licenses, can be used as customer demonstration system and can even be used to control your own facility.</p>
AX-VMT	Access Expert Visitor Management Add on Training.
AX-IDST	Access Expert Intrusion Detection Add on Training.
AX-ADT	Access Expert LDAP / Active Directory Add on Training.



Life Is On



Experience the power of the Cloud

[More Information](#)

[schneider-electric.com](https://www.schneider-electric.com)

Schneider Electric Industries SAS
35, rue Joseph Monier - CS 30323
F92506 Rueil-Malmaison Cedex

© 2022 Schneider Electric. All Rights Reserved. Life Is On Schneider Electric is a trademark and the property of Schneider Electric SE, its subsidiaries and affiliated companies.
• 998-XXXXXXX_GMA-GB