



A SIKA COMPANY

PRODUCT FOCUS

TILING



A STRONG FOUNDATION.

Introducing our new look powdered tile adhesive range.

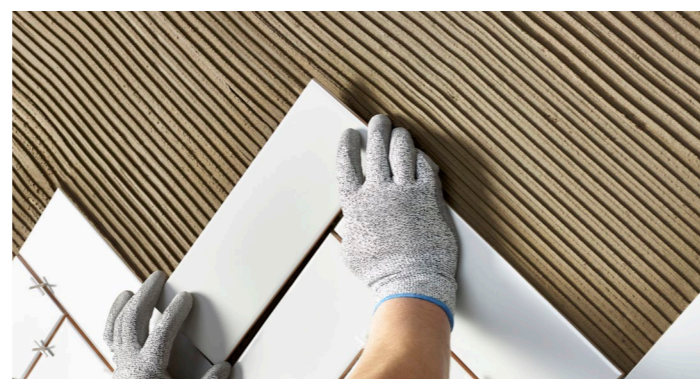
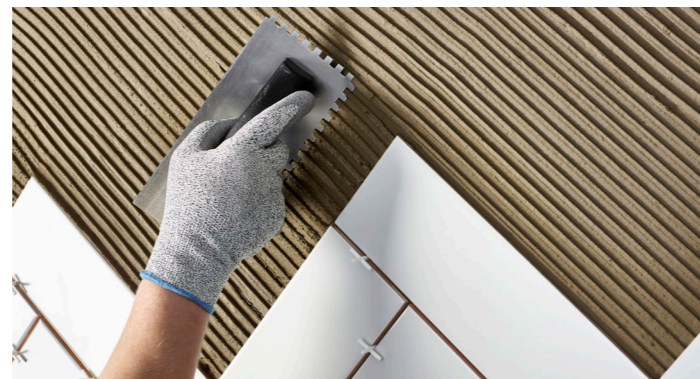


Our new comprehensive range of Sika powdered tile adhesives brings excellence to the experts, with products developed to meet the precise needs of the professional tiling contractor.

Providing a complete solution to any installation, the range includes products with varying degrees of flexibility and setting times, from SikaCerAM-140 Rapid Set which can be grouted over in just 2 hours to SikaCerAM-282 Fibre Reinforced which accommodates areas of high movement.

As tiling trends change, this range covers all eventualities with products suitable for both small and large format tiles, most tile types including porcelain and even substrates with underfloor heating.

This extensive range of tile adhesives meets the needs of even the most demanding of projects and provides the perfect finish the job deserves.



MARKED AND CLASSIFIED UNDER EN 12004

- D** Dispersion Adhesive
- D1** Normal Adhesive
- D2** Improved adhesive
- T** Thixotropic - Reduced slip properties
- C** Cementitious Adhesive
- C1** Normal Adhesive, strength criteria $>0.5 \text{ N/mm}^2$
- C2** Improved Adhesive, strength criteria $>1.0 \text{ N/mm}^2$
- F** Fast Setting Adhesive
- E** Extended Open Time
- S1** Deformability $> 2.5\text{mm}$
- S2** Deformability $> 5.0\text{mm}$

SIKACERAM®-140 RAPID SET FLOOR AND WALL TILE ADHESIVE

CODE	SIZE	COLOUR	BOX QTY	PALLET	BARCODE
SKCM140GY20	20KG	GREY	1	50	5055492703712

SikaCerAM®-140 Rapid Set is a water-resistant tile adhesive, suitable for bonding ceramic and mosaic tiles to floor or walls in both thick and thin bed applications.

Classification C1 FT

SIKACERAM®-240 FLEXIBLE RAPID SET FLOOR AND WALL TILE ADHESIVE

CODE	SIZE	COLOUR	BOX QTY	PALLET	BARCODE
SKCM240GY20	20KG	GREY	1	50	5055492703719

SikaCerAM®-240 Flexible Rapid Set Tile Adhesive is suitable for bonding ceramic tiles to walls or floors with a thick or thin bed application, with crack resistant properties making it ideal for applications where slight surface movement is likely.

Classification C2 FE

SIKACERAM®-272 ULTRA FLEXIBLE RAPID SET FLOOR AND WALL TILE ADHESIVE

CODE	SIZE	COLOUR	BOX QTY	PALLET	BARCODE
SKCM272WE20	20KG	WHITE	1	50	5055492703736

SikaCerAM®-272 Ultra Flexible is a rapid-setting, water resistant tile adhesive with superior flexibility, and is ideal for tiling heavy duty areas including heavily walked floors or areas under constant immersion.

Classification C2 FTE S1

SIKACERAM®-277 FLEXIBLE STANDARD SET FLOOR AND WALL TILE ADHESIVE

CODE	SIZE	COLOUR	BOX QTY	PALLET	BARCODE
SKCM277WE20	20KG	WHITE	1	50	5055492703743
SKCM277GY20	20KG	GREY	1	50	5055492703750

SikaCerAM®-277 Flexible Standard Set is a thin bed adhesive with a long working pot-life and extended open time for applications where extensive cutting is required during application.

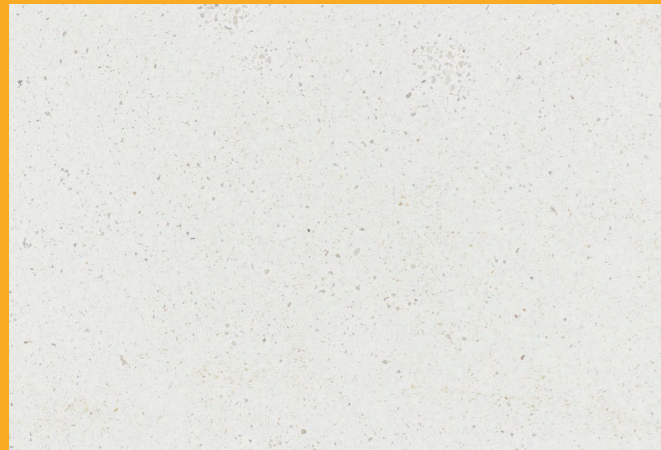
Classification C2 TE S1

SIKACERAM®-282 FIBRE REINFORCED FLOOR AND WALL TILE ADHESIVE

CODE	SIZE	COLOUR	BOX QTY	PALLET	BARCODE
SKCM282GY20	20KG	GREY	1	50	5055492703757

SikaCerAM®-282 Fibre Reinforced is a highly flexible, lightweight, fibre reinforced tile adhesive for applications where movement is expected.

Classification C2 TE S2



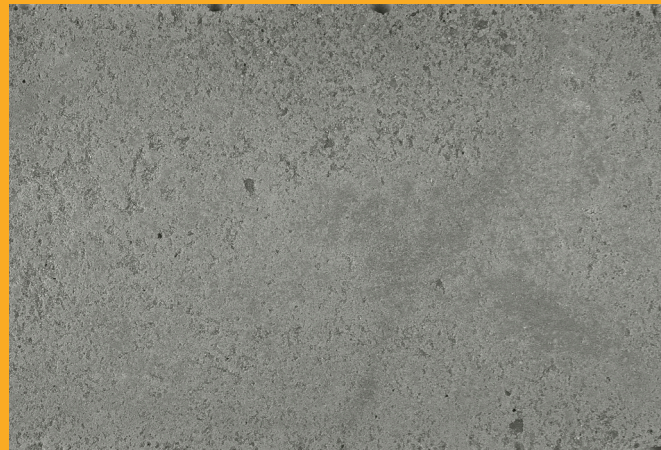
WHITE



JASMIN



MANHATTAN GREY



ASH



NEW

SIKACERAM® CLEANGROUT FLOOR AND WALL TILE GROUT

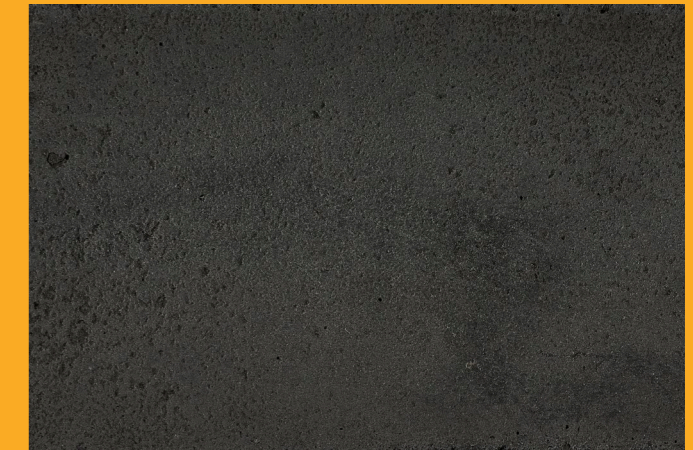
SikaCeram® CleanGrout is a cementitious, floor and wall tile grout for joints 1mm to 8mm in width; incorporating a high-quality, water-repellent formula which also prevents colours from fading over time.

Used: in applications where water-resistance is essential including swimming pools and tanks.

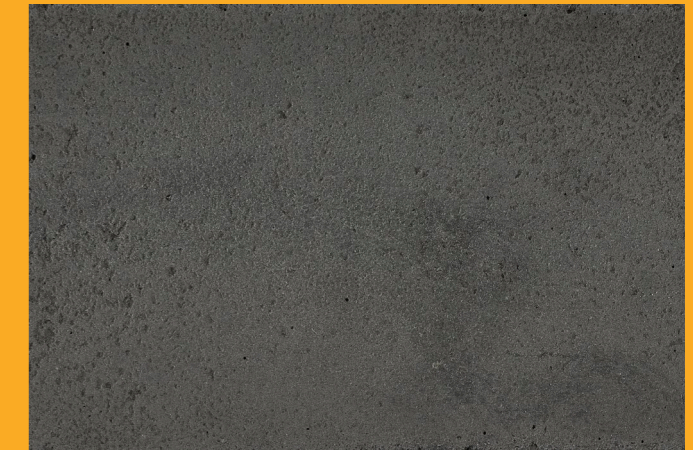
- Inhibits the formation of mould and bacterial growth
- Suitable for interior and exterior applications
- For use on all types of tiles, mosaic, marble and natural stone



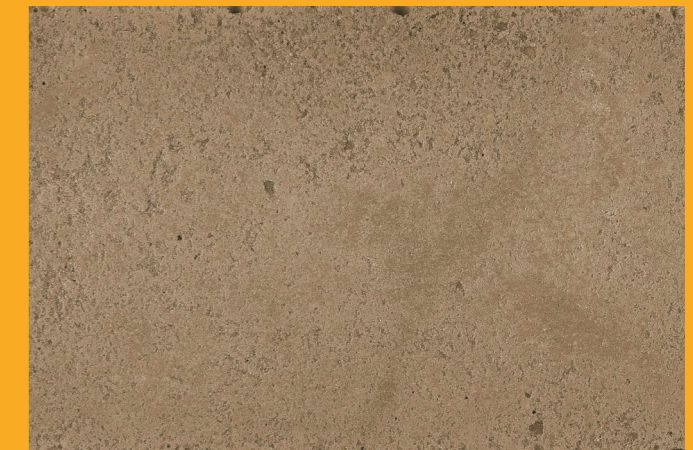
Available in a wide range of popular colours to suit the latest tile trends



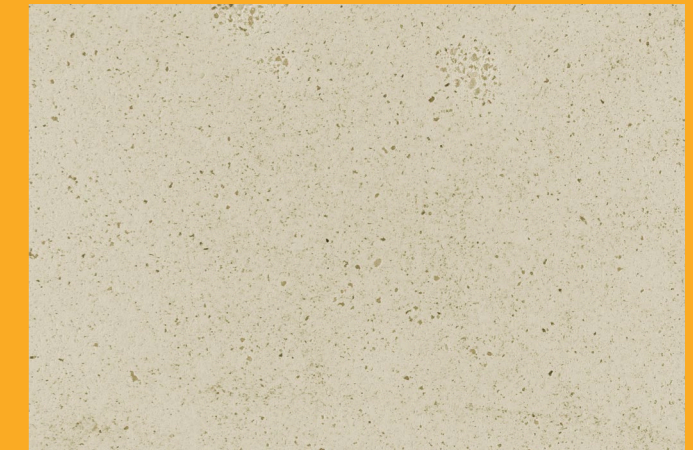
ABSOLUTE BLACK



ANTHRACITE

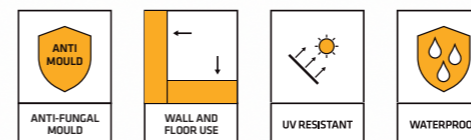


SAND



BEIGE

CODE	SIZE	COLOUR	BOX QTY	BOXES PER PALLET	BARCODE
SKCMCGANTH5	5KG	ANTHRACITE	4	20	7612894904116
SKCMCGBEIG5	5KG	BEIGE	4	20	7612894904093
SKCMCGWHI5	5KG	WHITE	4	20	7612894904130
SKCMCGASH5	5KG	ASH	4	20	7612894904079
SKCMCGJAS5	5KG	JASMIN	4	20	7612895008318
SKCMCGMAN5	5KG	MANHATTAN GREY	4	20	7612894904055
SKCMCGBLA5	5KG	ABSOLUTE BLACK	4	20	7612895008011
SKCMCGSAN5	5KG	SAND	4	20	7612895008110



Setting the standard with our new-look floor and wall tile adhesives.



Our new look range of Everbuild powdered tile adhesives are setting the standard for quality and reliability with products to suit the most common of application needs.

Offering products with standard or rapid setting qualities, the range also includes TileSet 711 Flexiplus S1 with added latex powder for improved flexibility for the more demanding applications.

Featuring a modern new look and quick reference icons to highlight the key features of each product, it has never been easier to select the right product for the job.

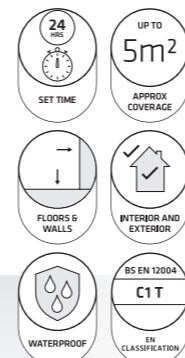


TileSet 700 Universal Floor and Wall Tile Adhesive **NEW**

CODE	SIZE	COLOUR	BOX QTY	BOXES PER PALLET	BARCODE
TS700GY20	20KG	GREY	1	50	5029347615819
TS700WE20	20KG	WHITE	1	50	5029347615826

Everbuild 700 TileSet Universal is a standard setting tile adhesive, ideal for when an extended opening time is required. Suitable for fixing ceramic, mosaic and natural stone tiles to semi-porous surfaces.

- Standard setting, thin bed tile adhesive
- Excellent non-slip properties
- Bonds to most building substrates, in both interior and exterior locations
- Ideal for fixing ceramic, mosaic and porcelain tiles

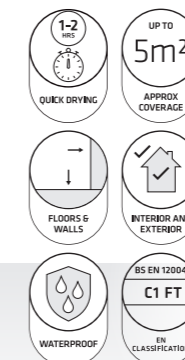


TileSet 705 Rapid Floor and Wall Tile Adhesive

CODE	SIZE	COLOUR	BOX QTY	BOXES PER PALLET	BARCODE
RAPID20	20KG	GREY	1	50	5029347070526

Everbuild 705 TileSet Rapid is fast setting tile adhesive, drying in just 1-2 hours making it ideal for when same day fixing, and grouting is required. Suitable for bonding ceramic tiles to floors and walls.

- Suitable for thin and thick bed applications
- Bonds to most substrates including concrete, cement screeds, existing tiles etc
- Internal and external use
- Waterproof

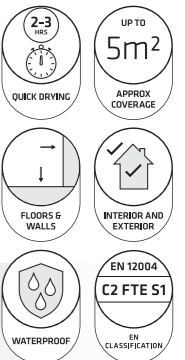


TileSet 711 Flexiplus S1 Floor and Wall Tile Adhesive

CODE	SIZE	COLOUR	BOX QTY	BOXES PER PALLET	BARCODE
RSPLUS	20KG	GREY	1	50	5029347071110
TS711WE20	20KG	WHITE	1	50	5029347615901

Everbuild 711 TileSet Flexiplus S1 is a rapid setting tile adhesive with added latex powder for improved flexibility. Can be used for ceramic, porcelain, and large format tiles.

- Added latex powder for improved flexibility
- Suitable for use on prepared wooden floors
- Quick drying, setting in 2-3 hours
- Waterproof



Ready mixed tile adhesives for a quick and convenient application.



Everbuild ready mixed tile adhesives bring quality and convenience together, with a range of products designed for a variety of applications and all suitable for use in damp or wet areas.

For the perfect all-rounder, look no further than 703 Fix and Grout, combining a ready-mixed tile adhesive and grout into one premium grade product which also includes Mould Shield, a powerful anti-bacterial additive to help prevent mould growth and retain whiteness.

Featuring the same modern look as the Everbuild powdered tile adhesives, these tubs will sit perfectly alongside on the shelf and provide the complete tile adhesive range.

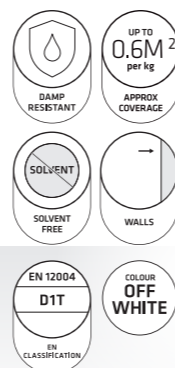


701 Non Slip Showerproof Ready Mixed Tile Adhesive

CODE	SIZE	COLOUR	BOX QTY	BOXES PER PALLET	BARCODE
NS02	3.75KG	OFF WHITE	1	150	5029347070120
NS05	7.5KG	OFF WHITE	1	100	5029347070137
NS10	14KG	OFF WHITE	1	56	5029347070144

Everbuild 701 Super Plus Non Slip Showerproof is an acrylic based, ready mixed tile adhesive for extra slip resistance and grab. Suitable for use with ceramic and porcelain wall tiles and mosaics.

- Thin bed adhesive for extra slip resistance and grab
- General purpose use in bathroom and kitchen areas
- Easy to trowel with a good wet edge
- Damp resistant

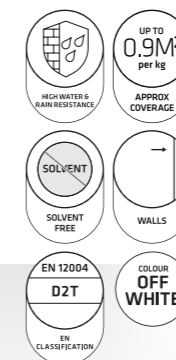


702 Water Resistant Ready Mixed Tile Adhesive

CODE	SIZE	COLOUR	BOX QTY	BOXES PER PALLET	BARCODE
RES05	7.5KG	OFF WHITE	1	100	5029347070250
RES10	16KG	OFF WHITE	1	56	5029347070205

Everbuild 702 Aqua Plus Water Resistant is a premium grade, acrylic based, ready mixed tile adhesive for use in areas subject to prolonged/permanent water contact, and in areas of high humidity, including power showers.

- Contains an anti-fungal compound to prevent mould growth to the product
- Designed for use in kitchens, bathrooms, and power shower areas
- For use with ceramic, porcelain and mosaic wall tiles
- Extra slip resistance and high bond strength

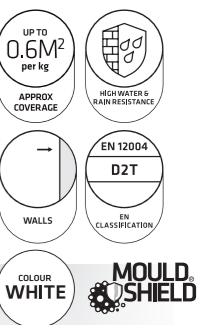


703 Fix And Grout Ready Mixed Tile Adhesive and Grout

CODE	SIZE	COLOUR	BOX QTY	BOXES PER PALLET	BARCODE
FIX005	750G	WHITE	12	80	5029347600426
FIX01	1.5KG	WHITE	12	40	5029347070311
FIX02	3.75KG	WHITE	1	150	5029347070328
FIX05	7.5KG	WHITE	1	100	5029347070359

Everbuild 703 Multi Plus Fix and Grout is a premium grade, ready mixed tile adhesive formulated for use as both an adhesive and grout.

- Contains Mould Shield®, a powerful anti-bacterial additive to retain whiteness
- Brilliant white, dual purpose adhesive and grout
- Suitable for bathrooms, kitchens, and showers
- High water resistance



730 Uniflex Flexible Hygienic Wall and Floor Tile Grout

IDEAL FOR DOMESTIC, COMMUNAL, AND
POWER SHOWER AREAS

ADDED POLYMER FOR INCREASED
FLEXIBILITY

CONTAINS MOULD SHIELD® FOR LONG
LASTING, ANTI-FUNGAL PROTECTION
AGAINST BLACK MOULD

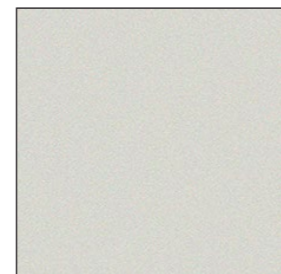
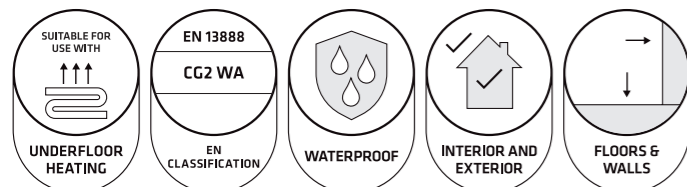
SUITABLE FOR USE WITH CERAMIC,
NATURAL STONE, AND PORCELAIN TILES



CODE	SIZE	COLOUR	BOX QTY	BOXES PER PALLET	BARCODE
UNIFLEX2WE	2.5KG	WHITE	4	64	5029347615918
UNIFLEX5WE	5KG	WHITE	1	100	5029347612283
UNIFLEX5ANTH	5KG	ANTHRACITE	1	100	5029347612337
UNIFLEX5IV	5KG	IVORY	1	100	5029347612306
UNIFLEX5GY	5KG	GREY	1	100	5029347612290

Everbuild 730 Uniflex Flexible Hygienic Wall and Floor Tile Grout is a cementitious grout designed specifically for wall and floor tile applications for joints up to 15mm wide. The added powder polymer provides flexibility and water resistance to provide a durable water repellent finish.

Suitable for most common tiles including ceramic, natural stone and porcelain. 730 Uniflex Flexible Hygienic Wall and Floor Tile Grout contains Mould Shield for long lasting Anti-Fungal protection against black mould.



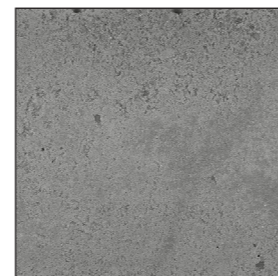
GREY



IVORY



WHITE



ANTHRACITE

These swatch colours may not be a true representation, please obtain a sample from your local stockist.

3-part Wet Room Tanking System



Tanking Primer

Apply by brush to all porous and semi porous surfaces in the areas that are to be waterproofed. For extremely porous surfaces, apply a second coat when dry (after 1 hour).



Tanking Tape and Mat

Apply the self adhesive Tanking Tape to all corner joints, board joints and pipe penetrations to create a watertight seal that accommodates multi-directional movement. Use the roller supplied to press down the tape. Next, apply the self adhesive Drain Mat capable of coping with board movement around the drain outlet, which is the area most susceptible to water leaks.



Tanking Membrane

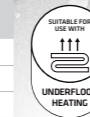
The ready-to-use Tanking Membrane is applied by brush in a 2 coat system at right angles to each other to create a permanently flexible watertight membrane. Non-hazardous, it is quick drying and tiling can begin after 12 hours. Detailed application instructions are given on each product within the kit.

Aquaseal® Tanking Kit Waterproof Wet Room System

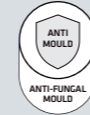
CODE	SIZE	BOX QTY	BOXES PER PALLET	BARCODE
AQWRKIT	LARGE	1	33	5029347611149
AQWRSTDKIT	STANDARD	1	40	5029347611262
AQWRSTAPE10	10M	1	280	NO BARCODE

Aquaseal Waterproof Tanking Membrane

CODE	SIZE	COLOUR	BOX QTY	BOXES PER PALLET	BARCODE
AQWRMEM5	SLTR	BLUE	1	60	5029347611163



Break the mould with the Forever White range of sealants and grouts.



WATCH THE VIDEO:
everbuild.co.uk/videos/break-mould-forever-white



Forever White Silicone Sealant

CODE	SIZE	COLOUR	BOX QTY	BOXES PER PALLET	BARCODE
FOREVERWE	295ML	WHITE	12	120	5029347603540
FOREVERCLEAR	295ML	CLEAR	12	120	5029347603953
FOREVERIV	295ML	IVORY	12	120	5029347606404
FOREVERGY	295ML	GREY	12	120	5029347615376

Forever White Powder Wall Tile Grout

CODE	SIZE	COLOUR	BOX QTY	BARCODE
FWPOWGROUT1	1.2KG	ARCTIC WHITE	8	5029347606145
FWPOWGROUT3	3KG	ARCTIC WHITE	1	5029347606367

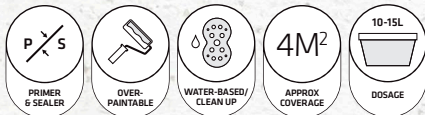
Forever White Grout Reviver

CODE	SIZE	COLOUR	BOX QTY	BARCODE
FWREVIVE	200ML	ARCTIC WHITE	12	5029347606152

ANCILLARIES

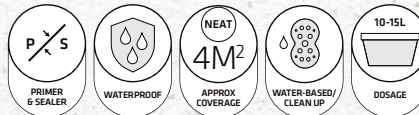
501 PVA Bond

MERCHANT INFORMATION			
CODE	SIZE	BOX QTY	BARCODE
PVA05L	500ML	20	5029347005108
PVA1L	1L	12	5029347005115
PVA2	2.5L	6	5029347005122
PVA5L	5L	4	5029347005153
PVAB25L	25L	1	5029347005160
PVAB1000	1000KG	1	-



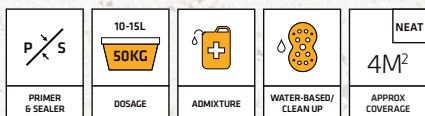
503 S.B.R. Bond

MERCHANT INFORMATION			
CODE	SIZE	BOX QTY	BARCODE
SBR2L	2.5L	6	5029347613624
SBR5L	5L	4	5029347005351
SBRB25	25L	1	5029347005368
SBRB200	200L	1	-



SikaBond® PVA+

MERCHANT INFORMATION			
CODE	SIZE	BOX QTY	BARCODE
SIKAPVA1	1LTR	12	5055492700568
SIKAPVA2	2.5LTR	6	5055492700575
SIKAPVA5	5LTR	4	5055492700469
SIKAPVA25	25LTR	1	5055492700520



SikaBond® SBR+

MERCHANT INFORMATION			
CODE	SIZE	BOX QTY	BARCODE
SIKASBR25	25LTR	1	5055492700537
SIKASBR5	5LTR	4	5055492700476



EB25

The Ultimate Sealant and Adhesive

MERCHANT INFORMATION				
CODE	SIZE	COLOUR	BOX QTY	BARCODE
EB25ANTH	300ML	ANTHRACITE	12	5029347615598
EB25BK	300ML	BLACK	12	5029347615550
EB25CL	300ML	CRYSTAL CLEAR	12	5029347615543
EB25GY	300ML	GREY	12	5029347615567
EB25WE	300ML	WHITE	12	5029347615536



WATCH THE VIDEO:

[everbuild.co.uk/
videos/eb25-ultimate-
sealantadhesive](http://everbuild.co.uk/videos/eb25-ultimate-sealantadhesive)



0113 240 3456 everbuild.sales@uk.sika.com everbuild.co.uk

Everbuild Building Products Ltd – A Sika Company
Site 41, Knowscliffe Way, Cross Green Industrial Estate, Leeds, LS9 0SW

**EVER
BUILD**

A SIKA COMPANY