

Syncroduo

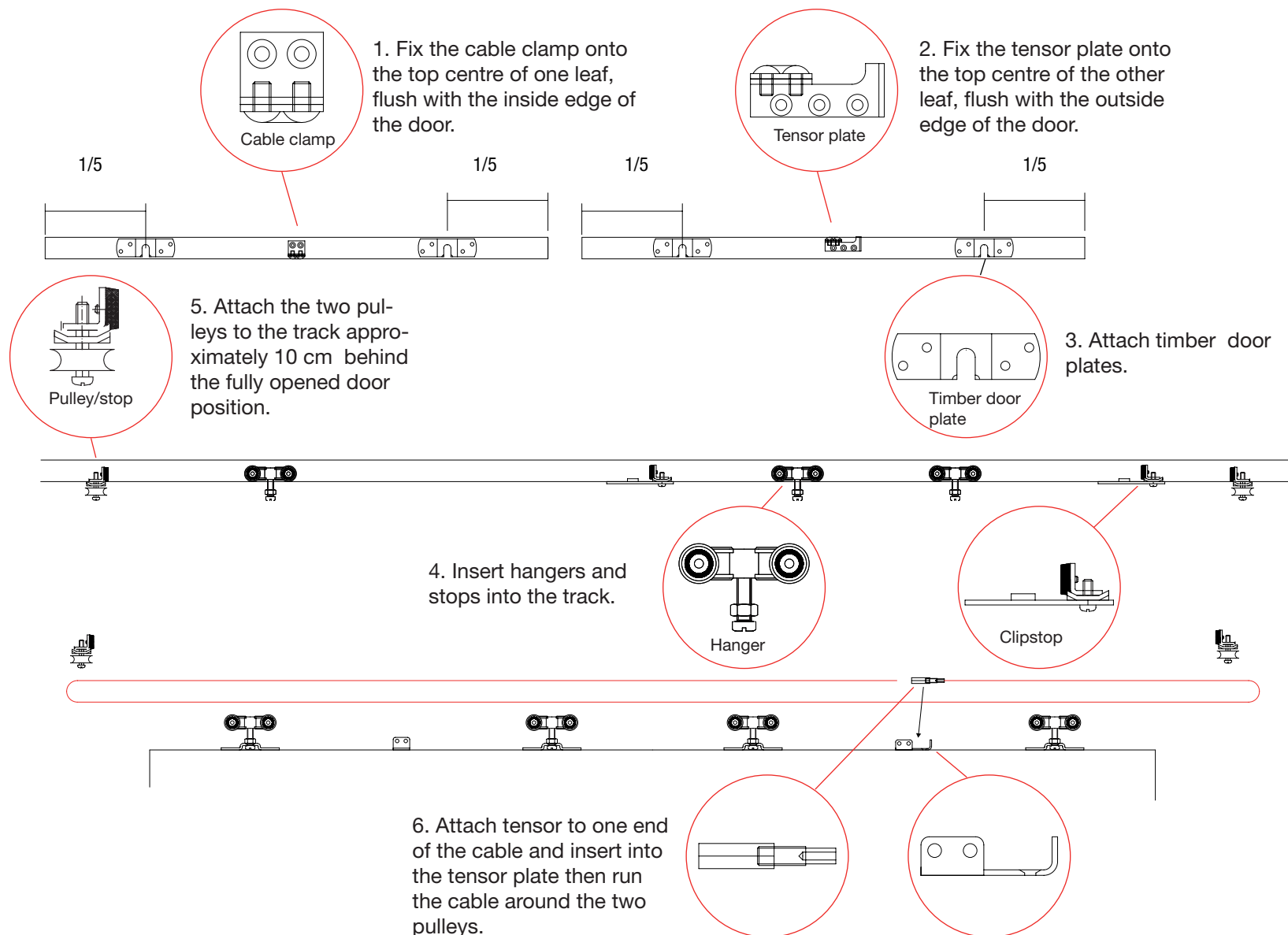
installation instructions

Products needed for installation:

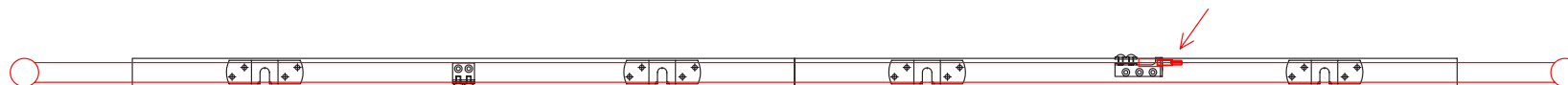
1. Track K-075 steel/alu
2. Wall / Soffit bracket (track can also be fixed directly underneath the door lintel, without brackets)
3. Hangers PP-075 nylon/ steel
4. Clipstops
5. Bottom guide: for example: bottom guide track AO-10/alu and bottom guide AOL-10

In addition:

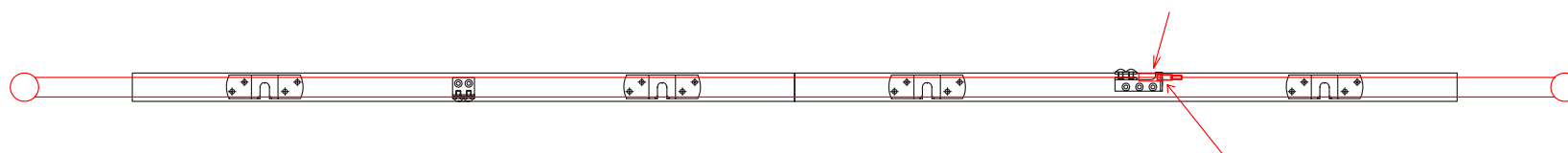
Cable
Tensor plate
Cable clamp
Pulley/stop



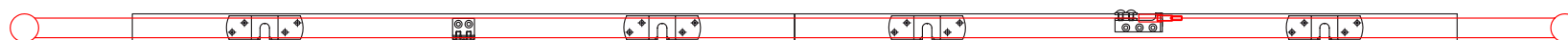
7. Clamp other end of cable into clamp on Tensor Plate and tighten the screws firmly. Cut off the excess cable.



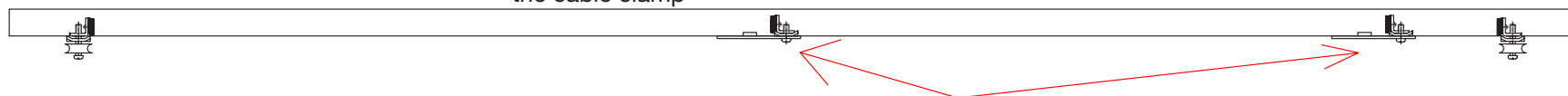
8. Lightly tension the cable.



9. Once the cable has been tensioned tighten the lock nut.



10. With the doors in the fully closed position clamp the cable underneath the external clamping plate on the cable clamp



11. Finally adjust the door stops to the point where you would like the "closed" and "opened" positions of the door.

