

# UBD

UBD rotary heads can profit from the special design of their rotary head, which allows for a very even water distribution, assuring optimum surface coverage. They assure therefore very short washing cycles, using lower quantities of water, with a definite advantage in those applications where recycled water is not allowed as a washing medium, and the volumes sent to disposal must be kept to a minimum. UBD heads work using Teflon slide bearings floating at high speed over a thin water film, the only wear part being an easily replaceable Teflon washer. Only a fraction of the liquid energy is then used to power the washing head, while the high speed of the rotating disc produces instantly a cloud of high energy droplets all over the inside surface of the tank. The clever design of this device results in no maintenance at all being necessary. Large inside passages are not easily subject to plugging while an extremely simple design with only one moving part avoids any internal jamming. All inside and outside surface are carefully polished, for fast and easy sanitizing. The two following tables give data about types with threaded connection and clip-on types.

## MATERIAL:

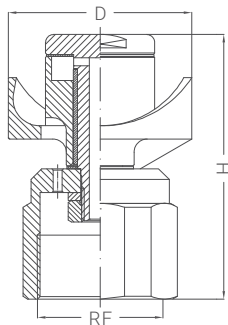
BODY, SHAFT AND ROTARY HEAD

B31 AISI 316L STAINLESS STEEL

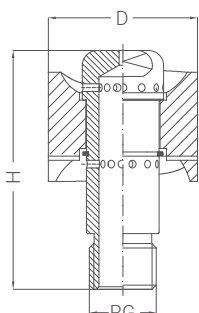
L61 HASTELLOY C22

## BEARINGS:

E1 PTFE



UBD 0140



UBD 0035

## Thread connection

CODE	Capacity at different pressures					l/min bar			Spray coverage deg	RG BSP	RF BSP				Dimensions mm	
	2,0	3,0	4,0	5,0	7,0	180°S	180°G	360°			1/4"	3/4"	1"	1-1/2"	H	D
UBD 0035 B31AG	29,0	35,0	40,0	45,0	53,0	.	.	.	.	.	.	.	.	.	45	28
UBD 0035 B31BG	29,0	35,0	40,0	45,0	53,0	.	.	.	.	.	.	.	.	.		
UBD 0035 B31EG	29,0	35,0	40,0	45,0	53,0	.	.	.	.	.	.	.	.	.		
UBD 0050 B31AG	41,0	50,0	58,0	64,0	76,0	.	.	.	.	.	.	.	.	.		
UBD 0050 B31BG	41,0	50,0	58,0	64,0	76,0	.	.	.	.	.	.	.	.	.	55	35
UBD 0050 B31EG	41,0	50,0	58,0	64,0	76,0	.	.	.	.	.	.	.	.	.		
UBD 0051 B31AG	41,0	50,0	58,0	64,0	76,0	.	.	.	.	.	.	.	.	.		
UBD 0051 B31BG	41,0	50,0	58,0	64,0	76,0	.	.	.	.	.	.	.	.	.		
UBD 0051 B31EG	41,0	50,0	58,0	64,0	76,0	.	.	.	.	.	.	.	.	.	55	38
UBD 0090 B31AG	73,0	90,0	104	116	137	.	.	.	.	.	.	.	.	.		
UBD 0090 B31BG	73,0	90,0	104	116	137	.	.	.	.	.	.	.	.	.		
UBD 0090 B31EG	73,0	90,0	104	116	137	.	.	.	.	.	.	.	.	.		
UBD 0091 B31AG	73,0	90,0	104	116	137	.	.	.	.	.	.	.	.	.	75	50
UBD 0091 B31BG	73,0	90,0	104	116	137	.	.	.	.	.	.	.	.	.		
UBD 0091 B31EG	73,0	90,0	104	116	137	.	.	.	.	.	.	.	.	.		
UBD 0140 B31AG	114	140	162	181	214	.	.	.	.	.	.	.	.	.		
UBD 0140 B31BG	114	140	162	181	214	.	.	.	.	.	.	.	.	.	100	70
UBD 0140 B31EG	114	140	162	181	214	.	.	.	.	.	.	.	.	.		
UBD 0141 B31AG	114	140	162	181	214	.	.	.	.	.	.	.	.	.		
UBD 0141 B31BG	114	140	162	181	214	.	.	.	.	.	.	.	.	.		
UBD 0141 B31EG	114	140	162	181	214	.	.	.	.	.	.	.	.	.	100	70
UBD 0210 B31AG	171	210	242	271	321	.	.	.	.	.	.	.	.	.		
UBD 0210 B31BG	171	210	242	271	321	.	.	.	.	.	.	.	.	.		
UBD 0210 B31EG	171	210	242	271	321	.	.	.	.	.	.	.	.	.		

The rotor of 1/4" BSP model is made of Teflon.

Models with 3/4", 1", 1-1/2" connections can be provided also with NPT thread: in this case, H can be slightly different.

Models with clip-on connection are available on request.

