



CONTACT US @ 855-355-2724

E-Mail: Sales@brahelectric.com

www.Brahelectric.com

PRODUCT DATA SHEET



PART NUMBER – ACSBSLG: BRAH Electric, aftermarket direct replacement aluminium ground block accessory, to be used with ground stab for ground connection, suitable for use with General Electric Armor Clad, Spectra Series and Spectra Low-Amp Series bus plugs

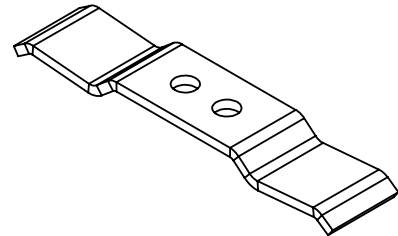
PRODUCT SPECIFICATIONS

Bus Plug Accessories
PART NO.ACSBSLG

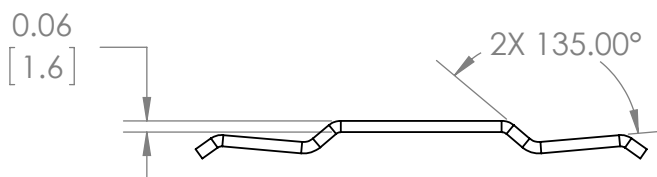
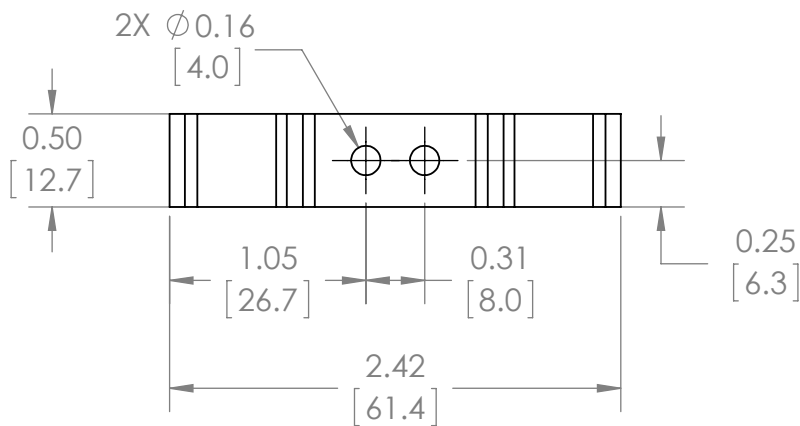
Manufacturer	BRAH Electric
Sub-Category	Bus Plug Parts
Family	BRAH-Bus Plugs
Type	GRND
Group	Grounds
Type For	AC,SB,SL

Warranty: All Products sold by BRAH Electric are guaranteed to be free of defect for a period of one year, under the condition that the product has been installed and operated properly. All items proven defective within the one year period will be replaced by BRAH Electric. In the event that we cannot provide a direct replacement, your monies will be refunded in full. We are not responsible for any consequential losses or damages outside of the defective product as well as any replacements or repairs performed by another party without our written authorization from BRAH Electric.

REVISIONS				
ZONE	REV.	DESCRIPTION	DATE	APPROVED



ISO VIEW



WWW.BRAHELECTRIC.COM, 855-355-2724

*NOTE: BRAH ELECTRIC BUS PLUG ACCESSORIES ACSBSLG, TO BE USE WITH GENERAL ELECTRIC ARMOR CLAD, SPECTRA SERIES AND SPECTRA LOW-AMP SERIES BUS PLUGS

THIRD ANGLE PROJECTION

PROPRIETARY AND CONFIDENTIAL

THE INFORMATION CONTAINED IN THIS DRAWING IS THE SOLE PROPERTY OF BRAH ELECTRIC. ANY REPRODUCTION IN PART OR AS A WHOLE WITHOUT THE WRITTEN PERMISSION OF BRAH ELECTRIC IS PROHIBITED.

UNLESS OTHERWISE NOTED

ALL DIMENSIONS ARE IN INCHES
METRIC UNITS ARE DISPLAYED
BENEATH IN [MM.]

MATERIAL	-
FINISH	N/A
DO NOT SCALE DRAWING	

BUS PLUG ACCEORIES

SIZE	DWG. NO.	REV.
A	ACSBSLG	A
SCALE: 1:1	WEIGHT: 3.2 LBS	SHEET 1 OF 1