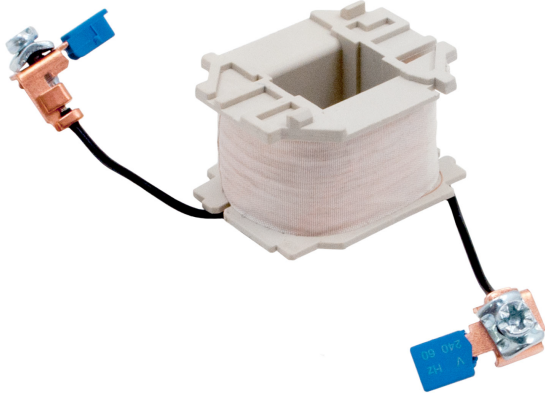


PRODUCT DATA SHEET



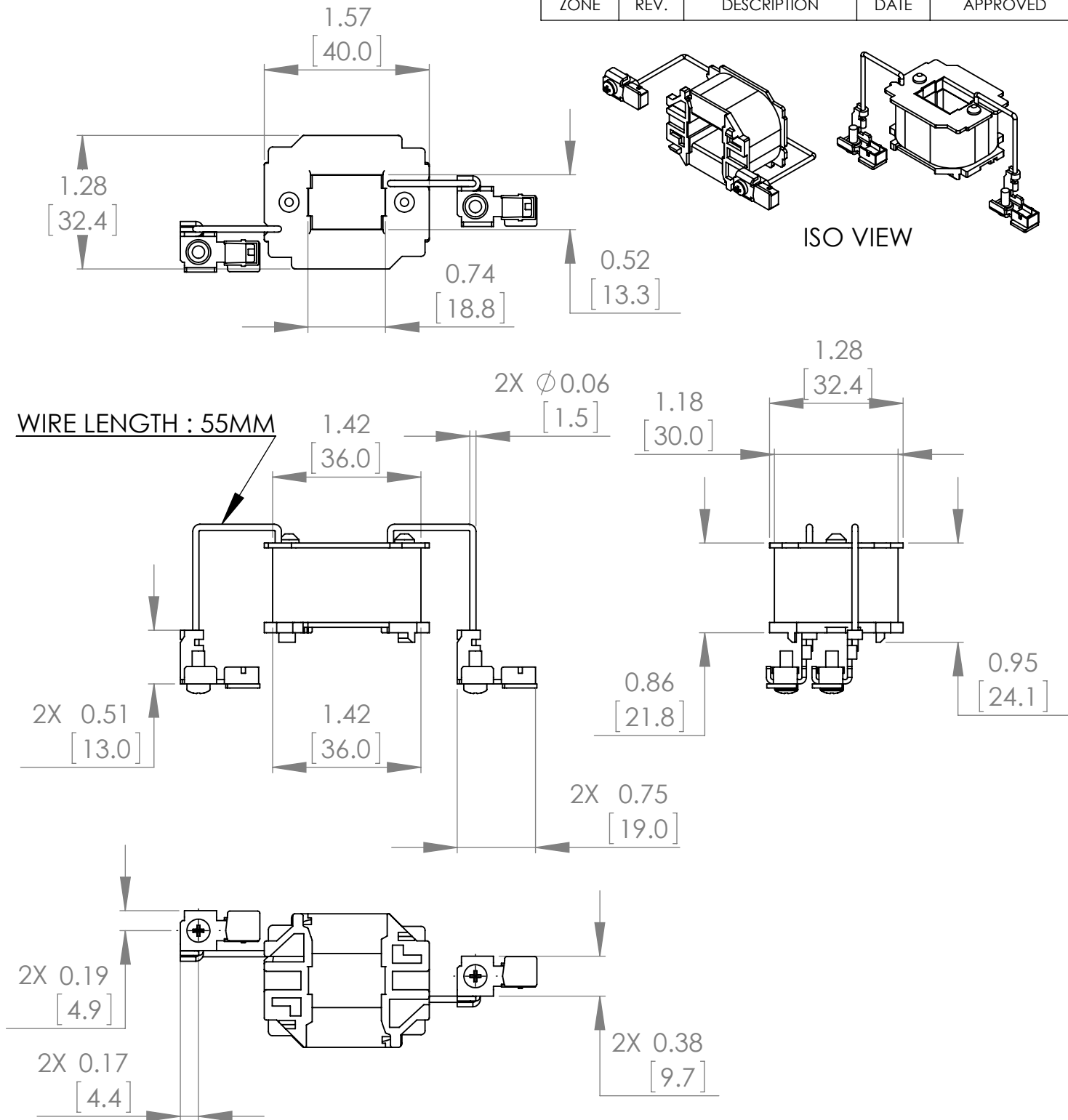
PART NUMBER - B3TY7403-0AK6: BRAH Electric, aftermarket direct replacement coils for Siemens 3TY7403-0AK6, World Series, type B3TY7, 120V AC 60Hz, suitable for use with 3TF30, 3TF31, 3TF32, 3TF33, 3TF40, 3TF41, 3TF42, 3TF43 contactors.

MAGNETIC COILS
PART NO. B3TY7403-0AK6

MANUFACTURER	BRAH Electric
SUB-CATEGORY	Coils
FAMILY	World Series
TYPE	B3TY7
TYPE FOR	3TF30, 3TF31, 3TF32, 3TF33, 3TF40, 3TF41, 3TF42, 3TF43
VOLTAGE	120

Warranty: All Products sold by BRAH Electric are guaranteed to be free of defect for a period of one year, under the condition that the product has been installed and operated properly. All items proven defective within the one year period will be replaced by BRAH Electric. In the event that we cannot provide a direct replacement, your monies will be refunded in full. We are not responsible for any consequential losses or damages outside of the defective product as well as any replacements or repairs performed by another party without our written authorization from BRAH Electric.

REVISIONS				
ZONE	REV.	DESCRIPTION	DATE	APPROVED



* NOTE: BRAH ELECTRIC COILS ARE A DIRECT REPLACEMENT FOR SIEMENS 3TY7403-0AK6, WORLD SERIES, TYPE B3TY7, 120V AC 60HZ, SUITABLE FOR USE WITH 3TF30, 3TF31, 3TF32, 3TF33, 3TF40, 3TF41, 3TF42, 3TF43 CONTACTORS

WWW.BRAHELECTRIC.COM, 855-355-2724

<p>THIRD ANGLE PROJECTION</p>	<p>UNLESS OTHERWISE NOTED</p> <p>ALL DIMENSIONS ARE IN INCHES METRIC UNITS ARE DISPLAYED BENEATH IN [MM.]</p>			
	<p>PROPRIETARY AND CONFIDENTIAL</p> <p>THE INFORMATION CONTAINED IN THIS DRAWING IS THE SOLE PROPERTY OF BRAH ELECTRIC. ANY REPRODUCTION IN PART OR AS A WHOLE WITHOUT THE WRITTEN PERMISSION OF BRAH ELECTRIC IS PROHIBITED.</p>		<p>MOTOR CONTROLS</p>	
<p>MATERIAL</p> <p>-</p>		<p>FINISH</p> <p>N/A</p>		<p>DO NOT SCALE DRAWING</p>
<p>SIZE</p> <p>A</p>		<p>DWG. NO.</p> <p>B3TY7403-0AK6</p>		<p>REV.</p> <p>A</p>
<p>SCALE:3:4</p>		<p>WEIGHT:</p>		<p>SHEET 1 OF 1</p>