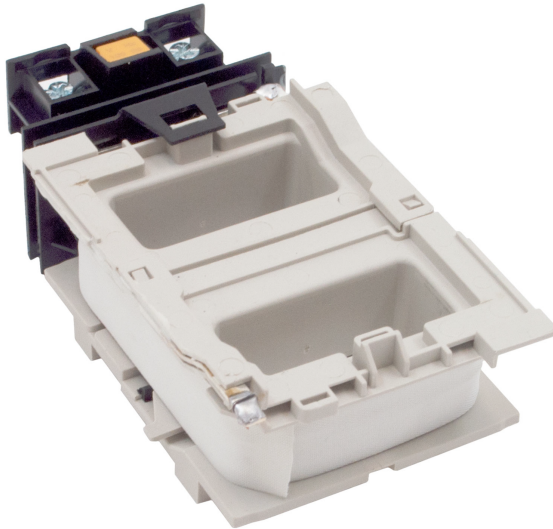


## PRODUCT DATA SHEET



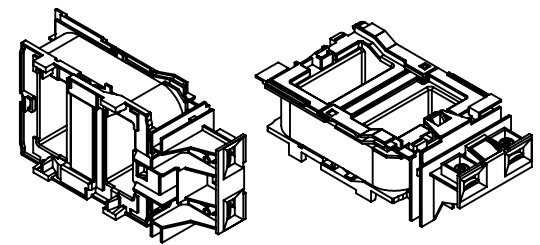
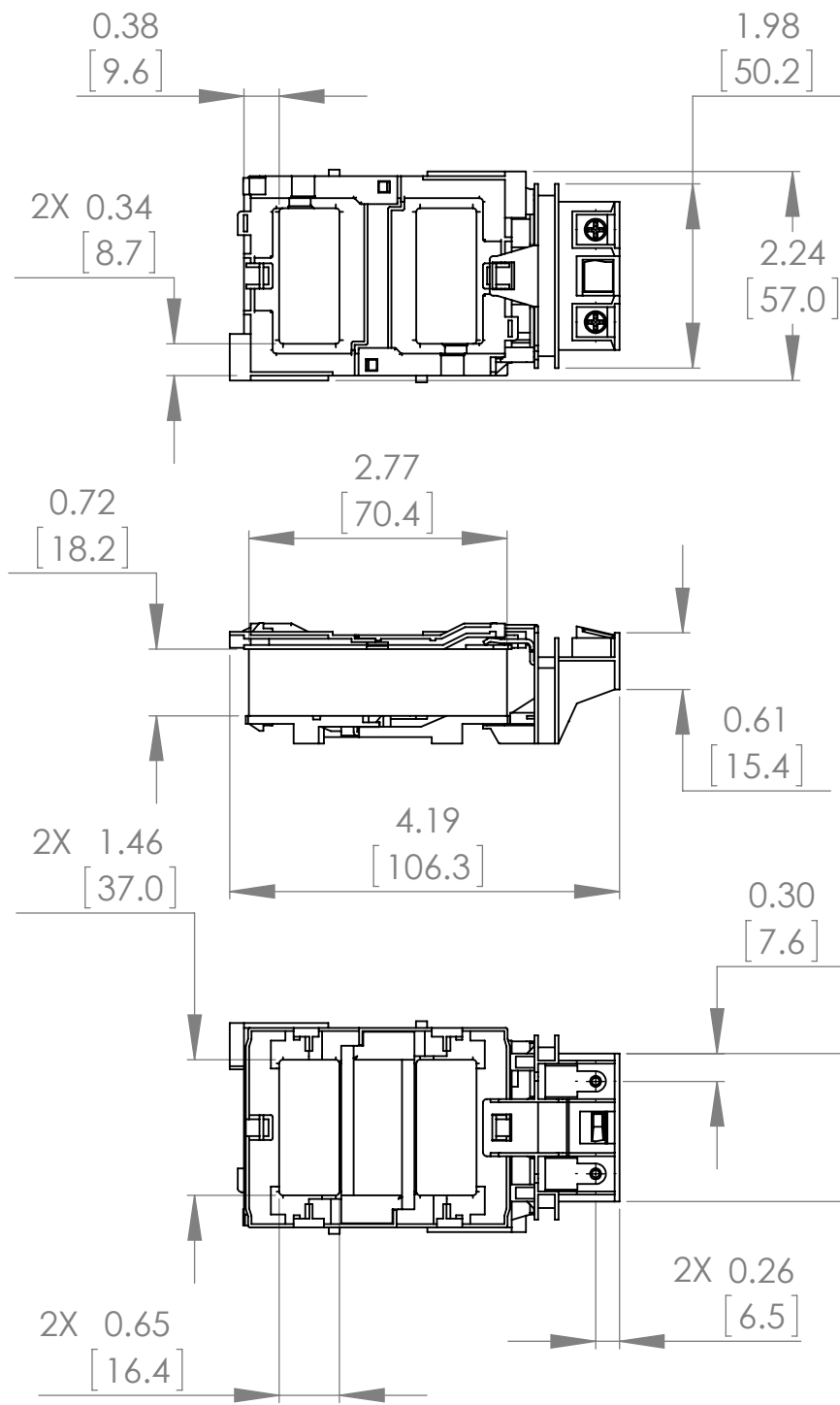
**PART NUMBER - B3TY7483-0AP6:** BRAH Electric,  
aftermarket direct replacement coils for Siemens  
3TY7483-0AP6, World Series, type B3TY7, 240V AC  
60Hz, suitable for use with 3TF48, 3TF49 contactors

MAGNETIC COILS  
PART NO. B3TY7483-0AP6

<b>MANUFACTURER</b>	BRAH Electric
<b>SUB-CATEGORY</b>	Coils
<b>FAMILY</b>	World Series
<b>TYPE</b>	B3TY7
<b>TYPE FOR</b>	3TF48, 3TF49
<b>VOLTAGE</b>	240

**Warranty:** All Products sold by BRAH Electric are guaranteed to be free of defect for a period of one year, under the condition that the product has been installed and operated properly. All items proven defective within the one year period will be replaced by BRAH Electric. In the event that we cannot provide a direct replacement, your monies will be refunded in full. We are not responsible for any consequential losses or damages outside of the defective product as well as any replacements or repairs performed by another party without our written authorization from BRAH Electric.

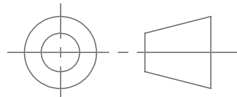

REVISIONS				
ZONE	REV.	DESCRIPTION	DATE	APPROVED



ISO VIEW

\* NOTE: BRAH ELECTRIC COILS ARE A DIRECT REPLACEMENT FOR SIEMENS 3TY7483-0AP6, WORLD SERIES, TYPE B3TY7, 240V AC 60HZ, SUITABLE FOR USE WITH 3TF48, 3TF49 CONTACTORS

[WWW.BRAHELECTRIC.COM](http://WWW.BRAHELECTRIC.COM) , 855-355-2724

 THIRD ANGLE PROJECTION	UNLESS OTHERWISE NOTED ALL DIMENSIONS ARE IN INCHES METRIC UNITS ARE DISPLAYED BENEATH IN [ MM. ]			
	MATERIAL -			
	FINISH N/A		MOTOR CONTROLS	
	DO NOT SCALE DRAWING			
PROPRIETARY AND CONFIDENTIAL THE INFORMATION CONTAINED IN THIS DRAWING IS THE SOLE PROPERTY OF BRAH ELECTRIC. ANY REPRODUCTION IN PART OR AS A WHOLE WITHOUT THE WRITTEN PERMISSION OF BRAH ELECTRIC IS PROHIBITED.		SIZE A	DWG. NO. B3TY7483-0AP6	REV. A
		SCALE:1:2	WEIGHT:	SHEET 1 OF 1