

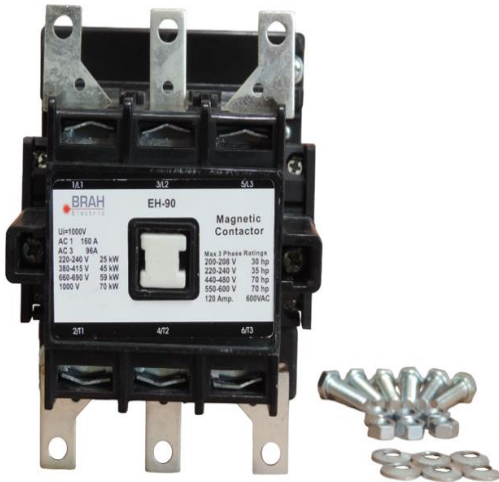


CONTACT US @ 855-355-2724

E-Mail: Sales@brahelectric.com

www.Brahelectric.com

PRODUCT DATA SHEET



Contactors

Picture is for reference only,
Actual Kit may vary slightly

Contactor voltage selection chart BEH-90-XX

BEH-90	120 VAC
BEH-90-30-22	120 VAC
BEH-90-30-22AA	24 VAC
BEH-90-30-22AK	240 VAC
BEH-90-30-22AS	480 VAC

PART NUMBER-BEH-90:

BRAH Electric, Direct replacement aftermarket conversion kit for ABB 96 amp, 600 volt, 3 pole, complete with 120VAC control coil, 2 normally open, 2 normally closed auxiliary contacts, suitable for use with ABB EH Series type EH, direct substitute contactor for ABB OEM EH-90

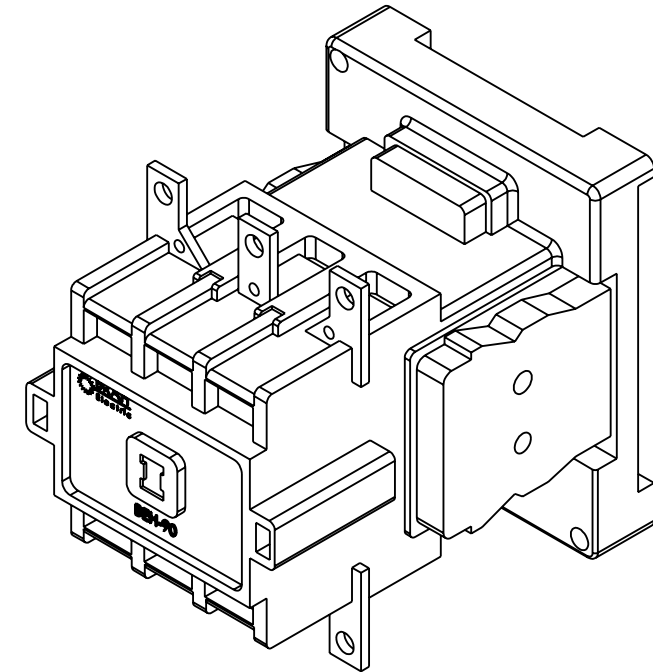
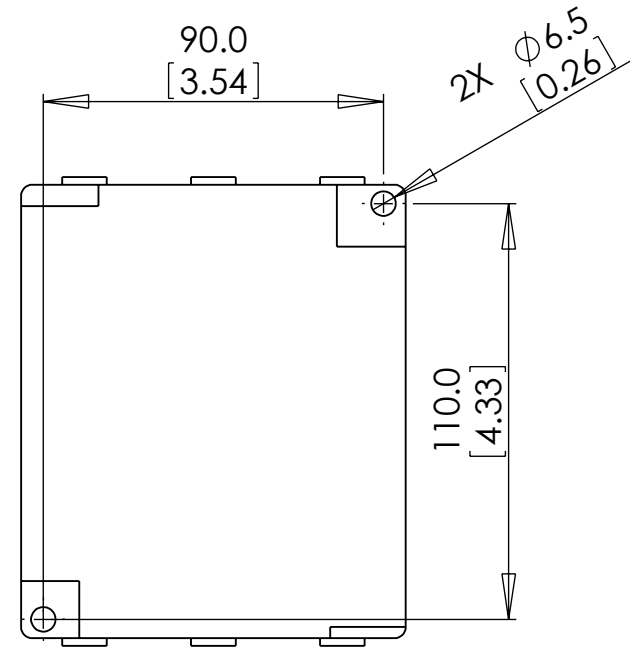
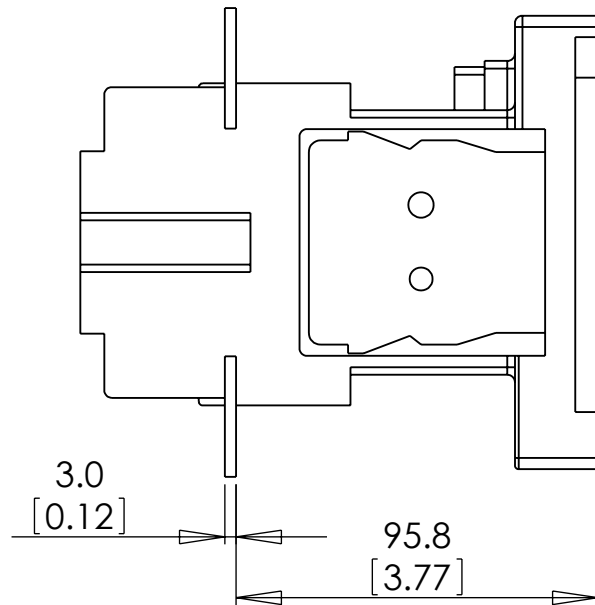
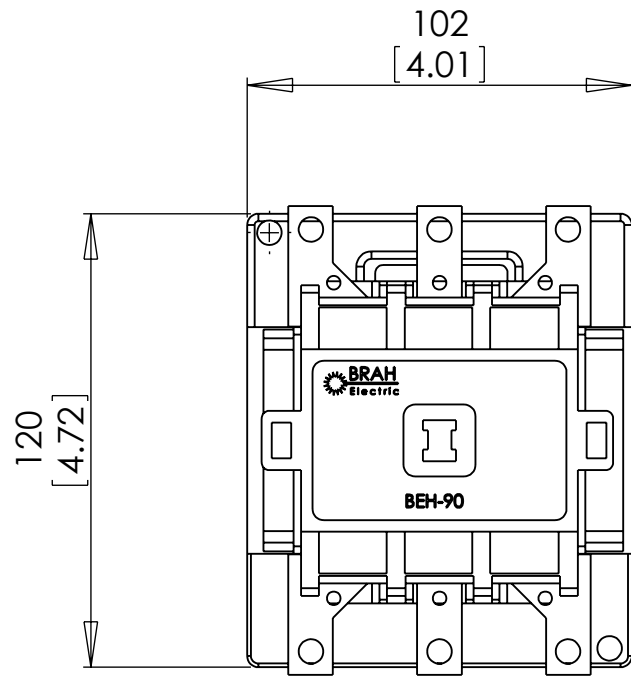
PRODUCT SPECIFICATIONS

Manufacturer	BRAH Electric
Sub-Category	Contactors
Family	EH Series
Type	EH, BEH
Coil Voltage Min	120
Coil Voltage Max	120
Voltage	600
Amperage	96
Poles	3
Phase	3

Warranty: All Products sold by BRAH Electric are guaranteed to be free of defect for a period of two years, under the condition that the product has been installed and operated properly. All items proven defective within the one year period will be replaced by BRAH Electric. In the event that we cannot provide a direct replacement, your monies will be refunded in full. We are not responsible for any consequential losses or damages outside of the defective product as well as any replacements or repairs performed by another party without our written authorization from BRAH Electric.

8 7 6 5 4 3 2 1

D

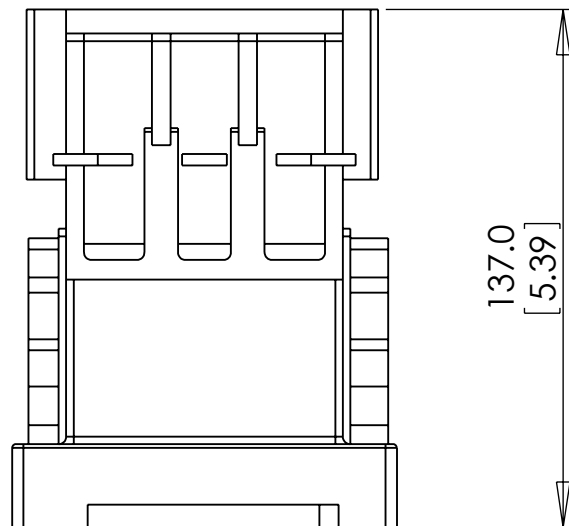


D

C

C

B



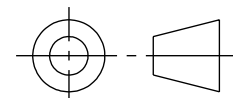
B

A

A

Component Specifications

TYPE	VALUE	NOTES
Phase	3	
Poles	3	
Voltage	600 V	
Amperage	96 A	AC 3
Coil Voltage Min	240 V	
Coil Voltage Max	480 V	
Min hp rating	30 hp	200-208 V
Max hp rating	70 hp	550-600 V
Rated Power	-	-
Contacts	2-N/O & 2-N/C auxiliary	
Mounting Hardware		Contact Spades



THIRD ANGLE PROJECTION

UNLESS OTHERWISE SPECIFIED:

DIMENSIONS ARE IN METRIC UNITS (MM) ANSI UNITS ARE DISPLAYED BENEATH IN [IN.]

PROPRIETARY AND CONFIDENTIAL
THE INFORMATION CONTAINED IN THIS DRAWING IS THE SOLE PROPERTY OF BRAH ELECTRIC. ANY REPRODUCTION IN PART OR AS A WHOLE WITHOUT THE WRITTEN PERMISSION OF BRAH ELECTRIC IS PROHIBITED.

MATERIAL
MOLDED PLASTIC CASE

FINISH
N/A

DO NOT SCALE DRAWING



DESC.
Magnetic Contactor BEH-90

PART. NO.
BEH-90

REV
A

SCALE: 1:2 WEIGHT: SHEET 1 OF 1

* NOTE: BRAH ELECTRIC CONTACTOR BEH-90 IS AN AFTERMARKET DIRECT REPLACEMENT FOR ABB EH-90, EH SERIES. SUITABLE FOR USE WITH EH SERIES MOTOR CONTROL SYSTEMS

8 7 6 5 4 3 2 1