

PRODUCT DATA SHEET



PART NUMBER – BLC1D2510-LE7: BRAH Electric, aftermarket direct replacement contactors for Telemecanique LC1D2510-LE7, type BLC1D, 3P, 3PH, 40A, 600V, 7.5HP @ 240V, 15HP @ 480V, 20HP @ 600V, complete with 208V coil, 1NO aux contact, AC contactor

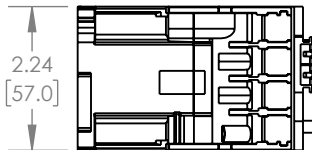
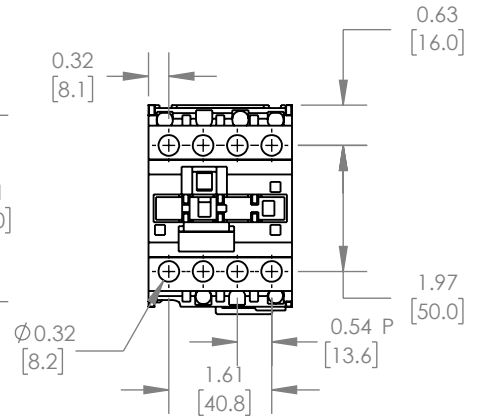
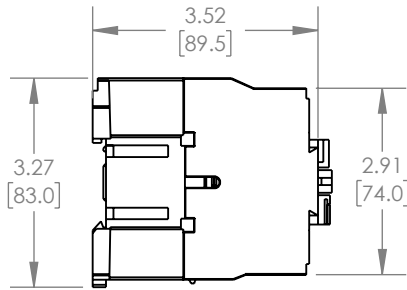
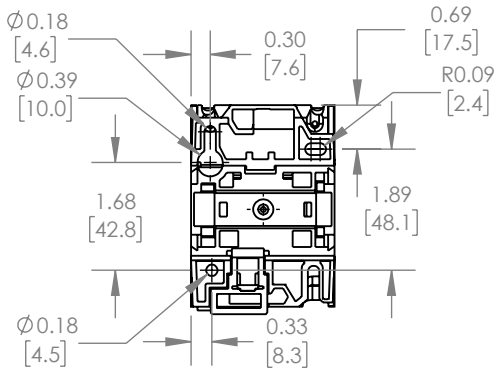
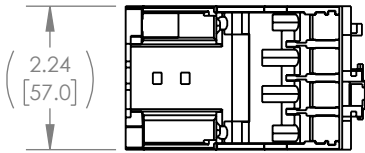
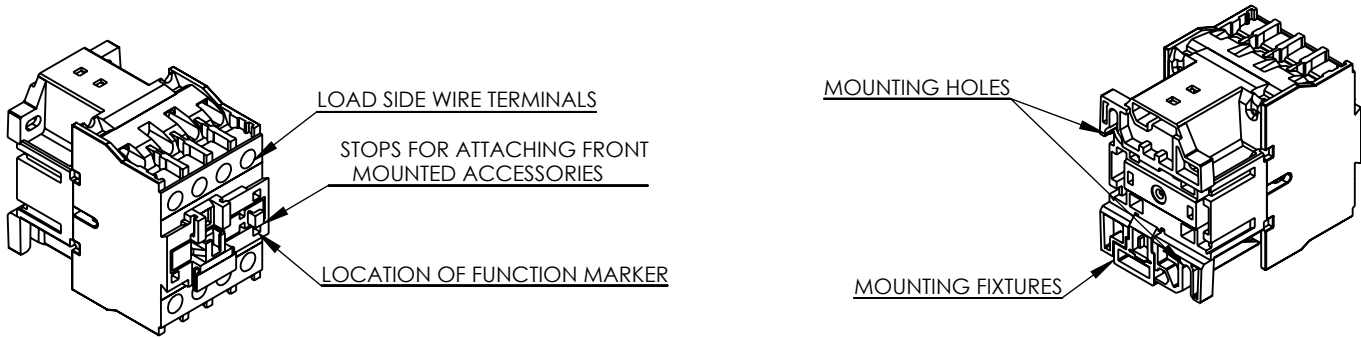
MAGNETIC CONTACTOR
PART NO. BLC1D2510-LE7

PRODUCT SPECIFICATIONS

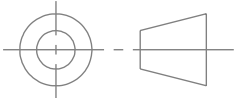
<i>TYPE</i>	<i>VALUE (UNITS)</i>	<i>NOTES</i>	<i>COMMENTS</i>
<i>PHASE</i>	3		
<i>POLES</i>	3		
<i>VOLTAGE</i>	600 (VAC)		
<i>AMPERAGE</i>	40 (A)		
<i>COIL VOLTAGE MIN</i>	208 (V)		
<i>COIL VOLTAGE MAX</i>	208 (V)		
<i>MIN HP. RATING</i>	7.5 (HP)	@ 240V	
<i>MAX HP RATING</i>	20 (HP)	@ 600V	

Warranty: All Products sold by BRAH Electric are guaranteed to be free of defect for a period of one year, under the condition that the product has been installed and operated properly. All items proven defective within the one year period will be replaced by BRAH Electric. In the event that we cannot provide a direct replacement, your monies will be refunded in full. We are not responsible for any consequential losses or damages outside of the defective product as well as any replacements or repairs performed by another party without our written authorization from BRAH Electric.

REVISIONS				
ZONE	DESCRIPTION	REV.	DATE	APPROVED



***NOTE: BRAH ELECTRIC CONTACTOR BLC1D2510-LE7 IS AN AFTERMARKET DIRECT REPLACEMENT FOR LC1D2510-LE7, SERIES. SUITABLE FOR USE WITH LC1-D SERIES MOTOR CONTROL SYSTEMS.**


 THIRD ANGLE PROJECTION
PROPRIETARY AND CONFIDENTIAL
 THE INFORMATION CONTAINED IN THIS DRAWING IS THE SOLE PROPERTY OF BRAH ELECTRIC. ANY REPRODUCTION IN PART OR AS A WHOLE WITHOUT THE WRITTEN PERMISSION OF BRAH ELECTRIC IS PROHIBITED.

UNLESS OTHERWISE NOTED
 ALL DIMENSIONS ARE IN INCHES
 METRIC UNITS ARE DISPLAYED
 BENEATH IN [MM.]
 MATERIAL
 MOLDED PLASTIC CASE
 FINISH
 N/A
 DO NOT SCALE DRAWING


MAGNETIC CONTACTOR
 SIZE **A** DWG. NO. **BLC1D2510-LE7** REV. **A**
 SCALE: 1:3 WEIGHT: 3.2 LBS SHEET 1 OF 1