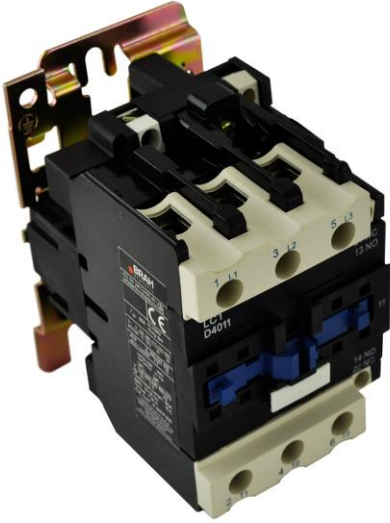


## PRODUCT DATA SHEET



**PART NUMBER – BLC1D40:** BRAH Electric, aftermarket direct replacement contactors for Telemecanique LC1D40, TeSys D Series, type BLC1, 3P, 3PH, 40A, 600V, 10HP @ 240V, 30HP @ 480V, 30HP @ 600V, complete with 110/120V AC coil, and 1 N/O - 1 N/C auxiliary contact, AC magnetic contactor, suitable for use with LC1-D series motor control systems

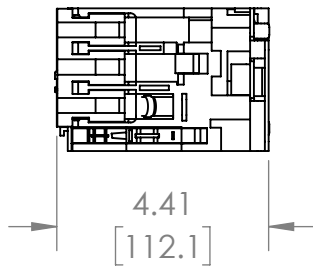
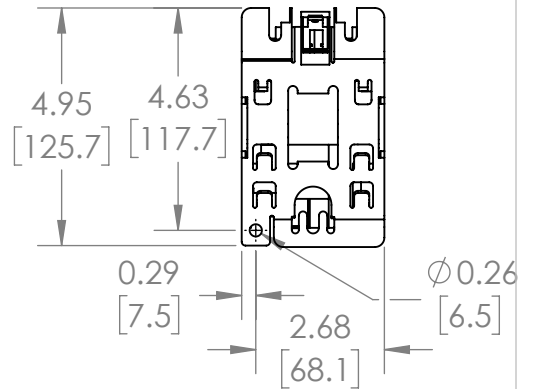
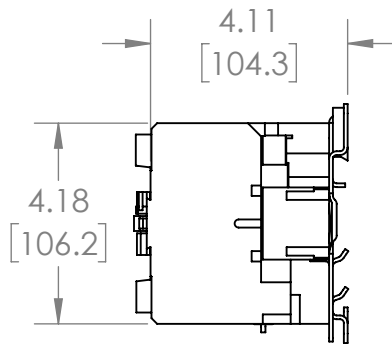
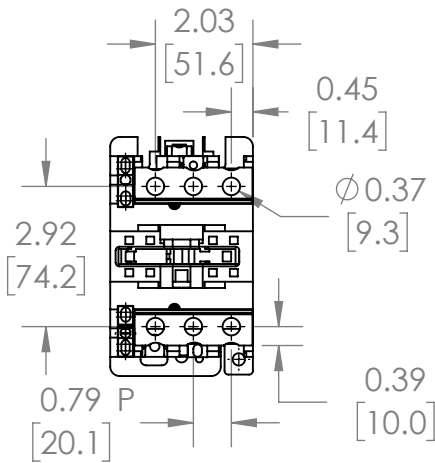
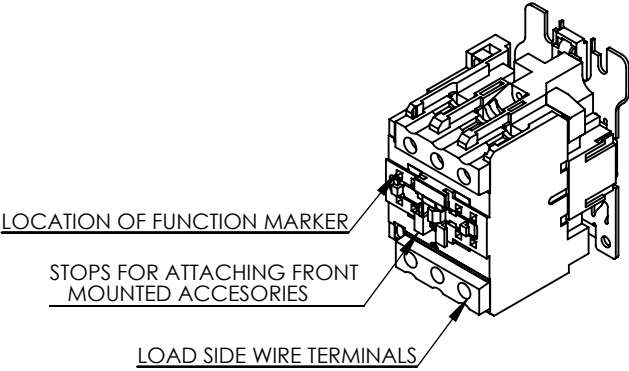
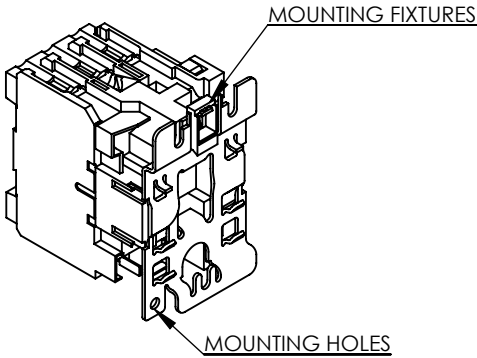
MAGNETIC CONTACTOR  
PART NO. BLC1D40

### PRODUCT SPECIFICATIONS

| <i>TYPE</i>             | <i>VALUE (UNITS)</i> | <i>NOTES</i> | <i>COMMENTS</i> |
|-------------------------|----------------------|--------------|-----------------|
| <i>PHASE</i>            | 3                    |              |                 |
| <i>POLES</i>            | 3                    |              |                 |
| <i>VOLTAGE</i>          | 600 (VAC)            |              |                 |
| <i>AMPERAGE</i>         | 40 (A)               |              |                 |
| <i>COIL VOLTAGE MIN</i> | 110 (V)              |              |                 |
| <i>COIL VOLTAGE MAX</i> | 120 (V)              |              |                 |
| <i>MIN HP. RATING</i>   | 10 (HP)              | @ 240V       |                 |
| <i>MAX HP RATING</i>    | 30 (HP)              | @ 600V       |                 |

**Warranty:** All Products sold by BRAH Electric are guaranteed to be free of defect for a period of one year, under the condition that the product has been installed and operated properly. All items proven defective within the one year period will be replaced by BRAH Electric. In the event that we cannot provide a direct replacement, your monies will be refunded in full. We are not responsible for any consequential losses or damages outside of the defective product as well as any replacements or repairs performed by another party without our written authorization from BRAH Electric.

| REVISIONS |      |             |      |          |
|-----------|------|-------------|------|----------|
| ZONE      | REV. | DESCRIPTION | DATE | APPROVED |



[WWW.BRAHELECTRIC.COM](http://WWW.BRAHELECTRIC.COM), 855-355-2724

\*NOTE: BRAH ELECTRIC CONTACTOR BLC1D40 IS AN AFTERMARKET DIRECT REPLACEMENT FOR LC1D40, LC1-D SERIES. SUITABLE FOR USE WITH LC1-D SERIES MOTOR CONTROL SYSTEMS

THIRD ANGLE PROJECTION

**PROPRIETARY AND CONFIDENTIAL**

THE INFORMATION CONTAINED IN THIS DRAWING IS THE SOLE PROPERTY OF BRAH ELECTRIC. ANY REPRODUCTION IN PART OR AS A WHOLE WITHOUT THE WRITTEN PERMISSION OF BRAH ELECTRIC IS PROHIBITED.

UNLESS OTHERWISE NOTED

ALL DIMENSIONS ARE IN INCHES  
METRIC UNITS ARE DISPLAYED  
BENEATH IN [ MM. ]

|                      |                     |
|----------------------|---------------------|
| MATERIAL             | MOLDED PLASTIC CASE |
| FINISH               | N/A                 |
| DO NOT SCALE DRAWING |                     |

**MAGNETIC CONTACTOR**

|            |                 |              |
|------------|-----------------|--------------|
| SIZE       | DWG. NO.        | REV.         |
| <b>A</b>   | BLC1D40         | <b>A</b>     |
| SCALE: 1:4 | WEIGHT: 3.2 LBS | SHEET 1 OF 1 |