

PRODUCT DATA SHEET



PART NUMBER – BLC2D1210-M7: BRAH Electric, aftermarket direct replacement contactors for Telemecanique LC2D1210-M7, TeSys D Series, direct substitute contactor, type LC2D, 3P, 3PH, 25A, 600V, 3HP @ 240V, 7.5HP @ 480V, 10HP @ 600V, complete with 220V AC coil, 1 N/O auxiliary contact, AC magnetic contactor suitable for use with LC2D series motor control systems

PRODUCT SPECIFICATIONS

MAGNETIC CONTACTOR
PART NO. BLC2D1210-M7

Voltage Selection Chart

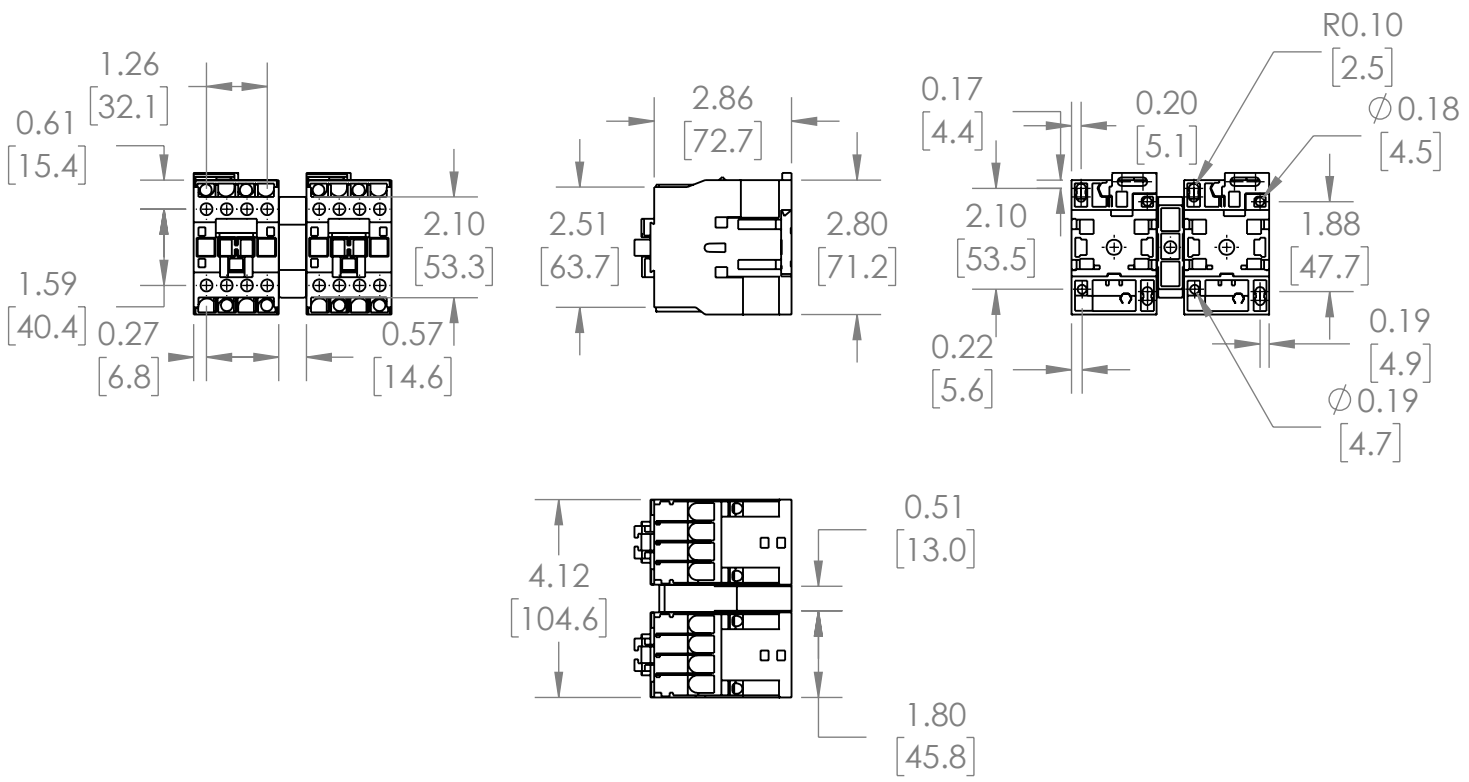
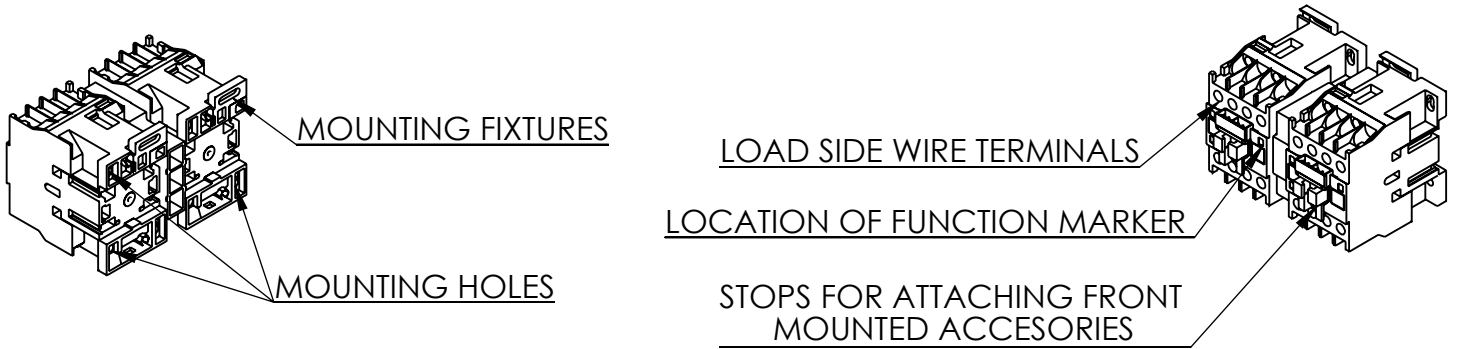
BLC2D12XX

BLC2D12	110/120 VAC
BLC2D1210	110/120 VAC
BLC2D1210-B6	24 VAC
BLC2D1210-B7	24 VAC
BLC2D1210-G6	110/120 VAC
BLC2D1210-G7	110/120 VAC
BLC2D1210-M6	220 VAC
BLC2D1210-M7	220 VAC
BLC2D1210-Q6	380 VAC
BLC2D1210-R7	440 VAC
BLC2D1210-T6	480 VAC
BLC2D1210-U6	240 VAC
BLC2D1210-U7	240 VAC

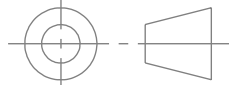
TYPE	VALUE (UNITS)	NOTES	COMMENT
PHASE	3		
POLES	3		
VOLTAGE	600 (VAC)		
AMPERAGE	25 (A)		
COIL VOLTAGE MAX	220 (V)		
MIN HP. RATING	3 (HP)	@ 240V	
MAX HP. RATING	10 (HP)	@ 600V	

Warranty: All Products sold by BRAH Electric are guaranteed to be free of defect for a period of one year, under the condition that the product has been installed and operated properly. All items proven defective within the one year period will be replaced by BRAH Electric. In the event that we cannot provide a direct replacement, your monies will be refunded in full. We are not responsible for any consequential losses or damages outside of the defective product as well as any replacements or repairs performed by another party without our written authorization from BRAH Electric

REVISIONS				
ZONE	REV.	DESCRIPTION	DATE	APPROVED



***NOTE: BRAH ELECTRIC CONTACTOR BLC2D1210-M7 IS AN AFTERMARKET DIRECT REPLACEMENT FOR LC2D1210-M7, LC2-D SERIES. SUITABLE FOR USE WITH LC2-D SERIES MOTOR CONTROL SYSTEMS**


THIRD ANGLE PROJECTION

PROPRIETARY AND CONFIDENTIAL
THE INFORMATION CONTAINED IN THIS DRAWING IS THE SOLE PROPERTY OF BRAH ELECTRIC. ANY REPRODUCTION IN PART OR AS A WHOLE WITHOUT THE WRITTEN PERMISSION OF BRAH ELECTRIC IS PROHIBITED.

UNLESS OTHERWISE NOTED
ALL DIMENSIONS ARE IN INCHES
METRIC UNITS ARE DISPLAYED
BENEATH IN [MM.]

MATERIAL	MOLDED PLASTIC CASE
FINISH	N/A
DO NOT SCALE DRAWING	



MAGNETIC CONTACTOR

SIZE	DWG. NO.	REV.
A	BLC2D1210-M7	A
SCALE: 1:4	WEIGHT: 3.2 LBS	SHEET 1 OF 1