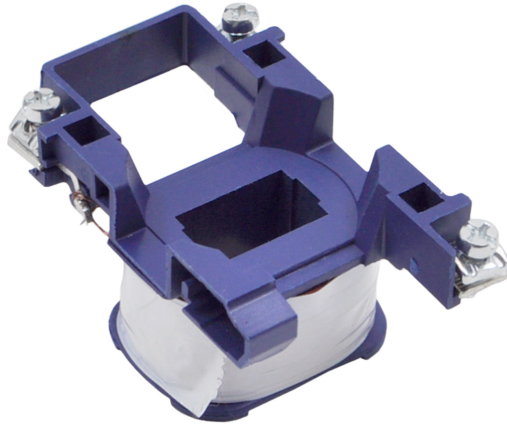


PRODUCT DATA SHEET



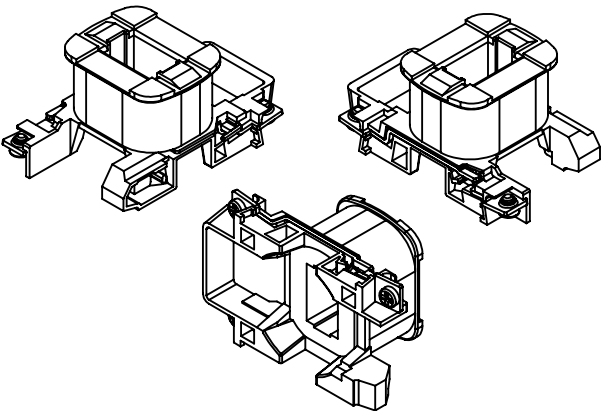
PART NUMBER - BLX1D2B6 : BRAH Electric, aftermarket direct replacement coils for Telemecanique LX1D2B6, TeSys D Series, type BLX1D, 24V AC 60Hz, suitable for use with LC1D09, LC1D12, LC1D18, LC2D09, LC2D12, LC2D18 contactors

MAGNETIC COILS
PART NO. BLX1D2B6

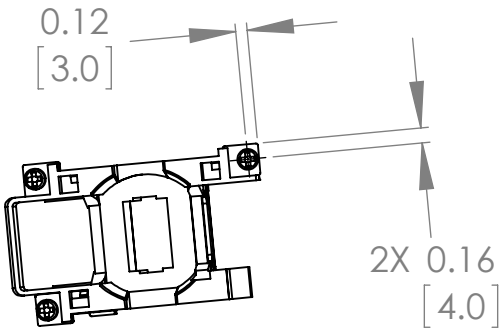
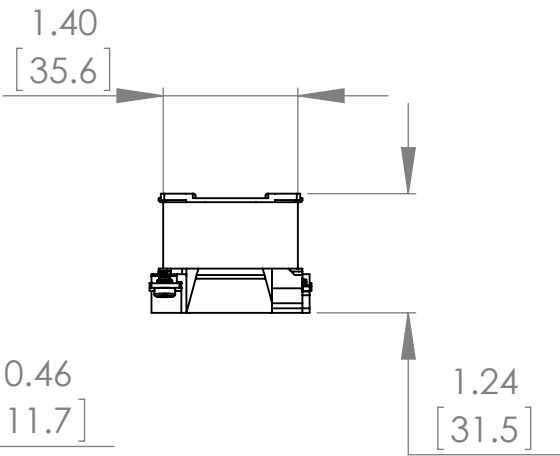
MANUFACTURER	BRAH Electric
SUB-CATEGORY	Coils
FAMILY	TeSys D
TYPE	BLX1D
TYPE FOR	LC1D09, LC1D12, LC1D18, LC2D09, LC2D12, LC2D18
VOLTAGE	24

Warranty: All Products sold by BRAH Electric are guaranteed to be free of defect for a period of one year, under the condition that the product has been installed and operated properly. All items proven defective within the one year period will be replaced by BRAH Electric. In the event that we cannot provide a direct replacement, your monies will be refunded in full. We are not responsible for any consequential losses or damages outside of the defective product as well as any replacements or repairs performed by another party without our written authorization from BRAH Electric.

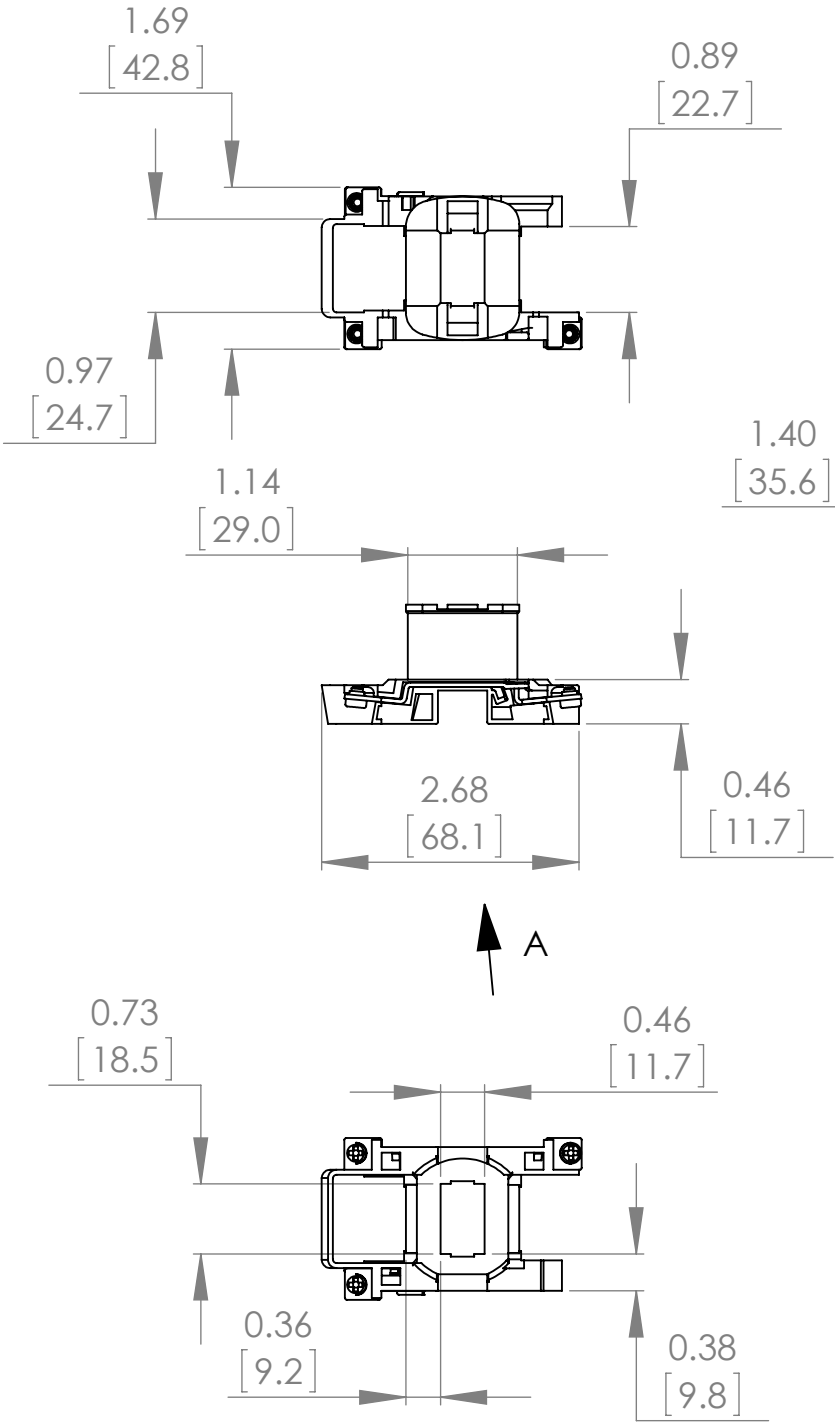
REVISIONS				
ZONE	REV.	DESCRIPTION	DATE	APPROVED



ISO VIEW

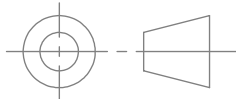



VIEW A



* NOTE: BRAH ELECTRIC COIL BLX1D2B6 IS A DIRECT REPLACEMENT FOR TELEMECANIQUE LX1D2B6, TESYS D SERIES, SUITABLE FOR USE WITH LC1D09, LC1D12, LC1D18, LC2D09, LC2D12, LC2D18 CONTACTORS

WWW.BRAHELECTRIC.COM, 855-355-2724

 <p>THIRD ANGLE PROJECTION</p> <p>PROPRIETARY AND CONFIDENTIAL</p> <p>THE INFORMATION CONTAINED IN THIS DRAWING IS THE SOLE PROPERTY OF BRAH ELECTRIC. ANY REPRODUCTION IN PART OR AS A WHOLE WITHOUT THE WRITTEN PERMISSION OF BRAH ELECTRIC IS PROHIBITED.</p>	UNLESS OTHERWISE NOTED			
	ALL DIMENSIONS ARE IN INCHES METRIC UNITS ARE DISPLAYED BENEATH IN [MM.]			
	MATERIAL	-	MOTOR CONTROLS	
	FINISH	N/A		
DO NOT SCALE DRAWING		SIZE A	DWG. NO. BLX1D2B6	REV. A
		SCALE:1:2	WEIGHT:	SHEET 1 OF 1