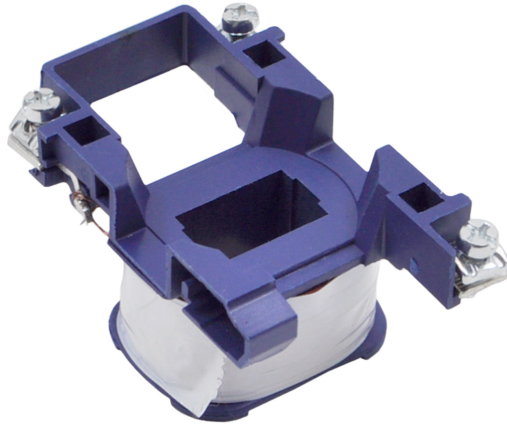


PRODUCT DATA SHEET



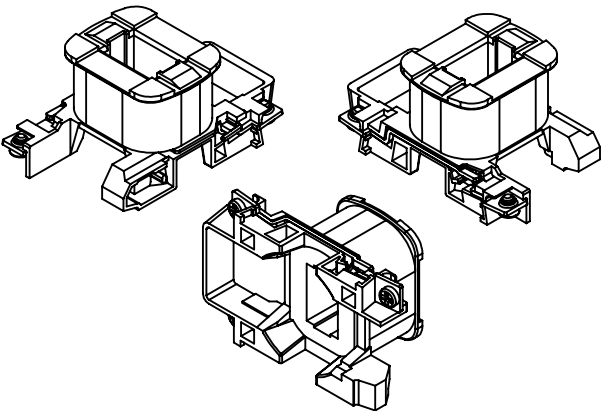
PART NUMBER - BLX1D2M6 : BRAH Electric, aftermarket direct replacement coils for Telemecanique LX1D2M6, TeSys D Series, type BLX1D, 220V AC 60Hz, suitable for use with LC1D09, LC1D12, LC1D18, LC2D09, LC2D12, LC2D18 contactors

MAGNETIC COILS
PART NO. BLX1D2M6

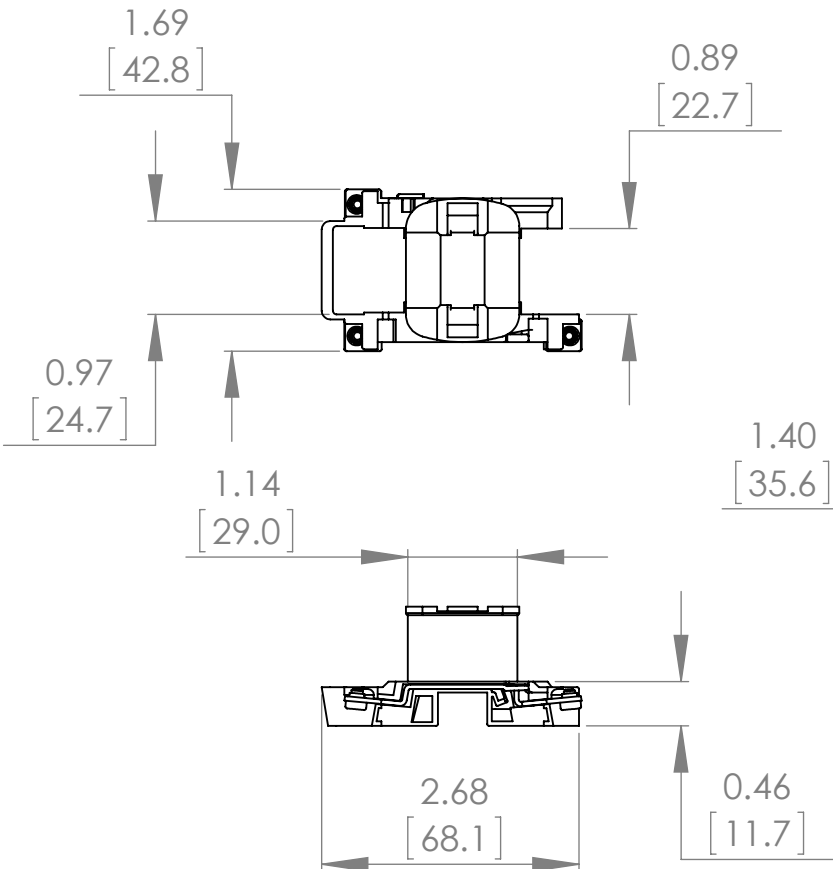
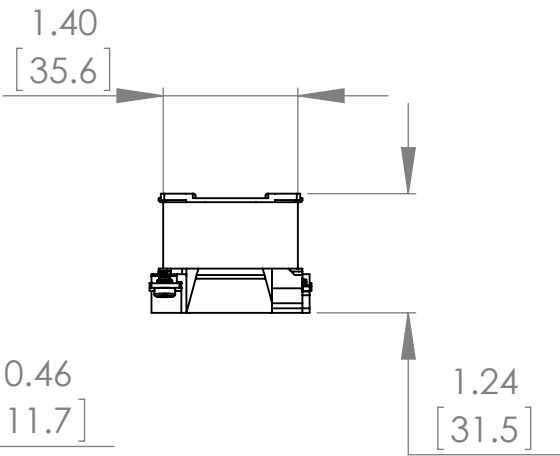
MANUFACTURER	BRAH Electric
SUB-CATEGORY	Coils
FAMILY	TeSys D
TYPE	BLX1D
TYPE FOR	LC1D09, LC1D12, LC1D18, LC2D09, LC2D12, LC2D18
VOLTAGE	220

Warranty: All Products sold by BRAH Electric are guaranteed to be free of defect for a period of one year, under the condition that the product has been installed and operated properly. All items proven defective within the one year period will be replaced by BRAH Electric. In the event that we cannot provide a direct replacement, your monies will be refunded in full. We are not responsible for any consequential losses or damages outside of the defective product as well as any replacements or repairs performed by another party without our written authorization from BRAH Electric.

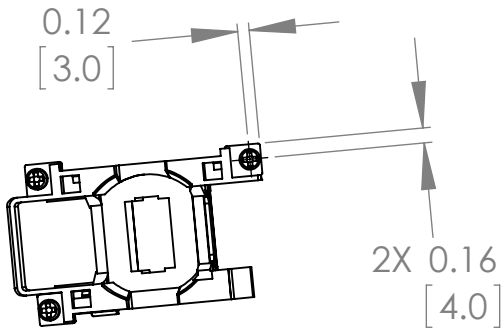
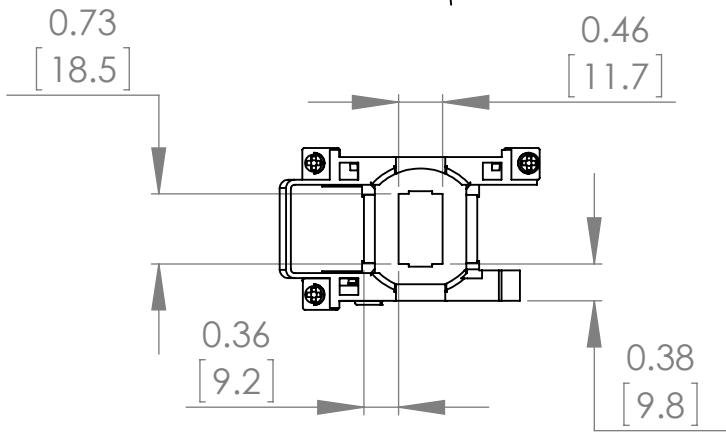
REVISIONS				
ZONE	REV.	DESCRIPTION	DATE	APPROVED



ISO VIEW



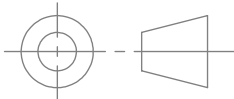

A



VIEW A

* NOTE: BRAH ELECTRIC COIL BLX1D2M6 IS A DIRECT REPLACEMENT FOR TELEMECANIQUE LX1D2M6, TESYS D SERIES, SUITABLE FOR USE WITH LC1D09, LC1D12, LC1D18, LC2D09, LC2D12, LC2D18 CONTACTORS

WWW.BRAHELECTRIC.COM, 855-355-2724

<div></div> <div>THIRD ANGLE PROJECTION</div>	UNLESS OTHERWISE NOTED		<div></div>	
	ALL DIMENSIONS ARE IN INCHES METRIC UNITS ARE DISPLAYED BENEATH IN [MM.]			
	MATERIAL	-	MOTOR CONTROLS	
	FINISH	N/A		
DO NOT SCALE DRAWING	SIZE A	DWG. NO. BLX1D2M6	REV. A	
	SCALE:1:2	WEIGHT:	SHEET 1 OF 1	