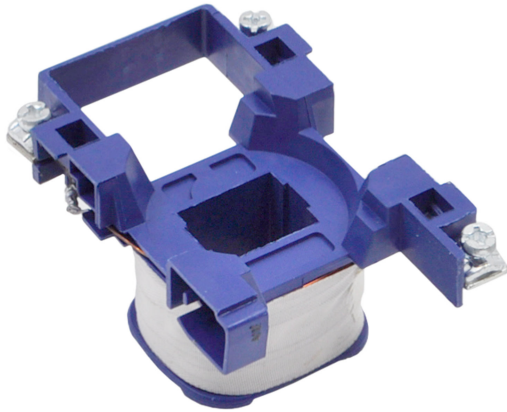


## PRODUCT DATA SHEET



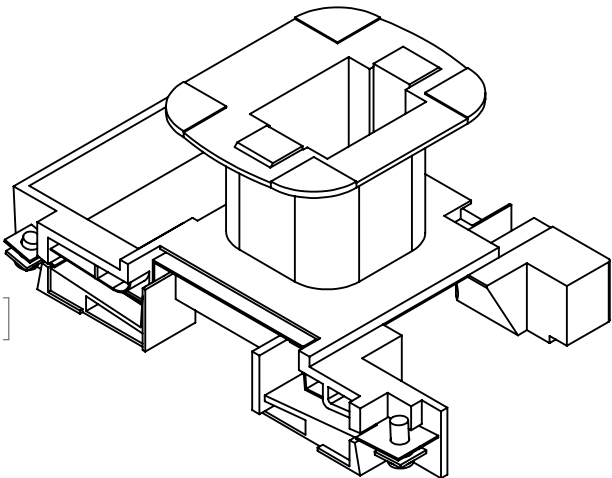
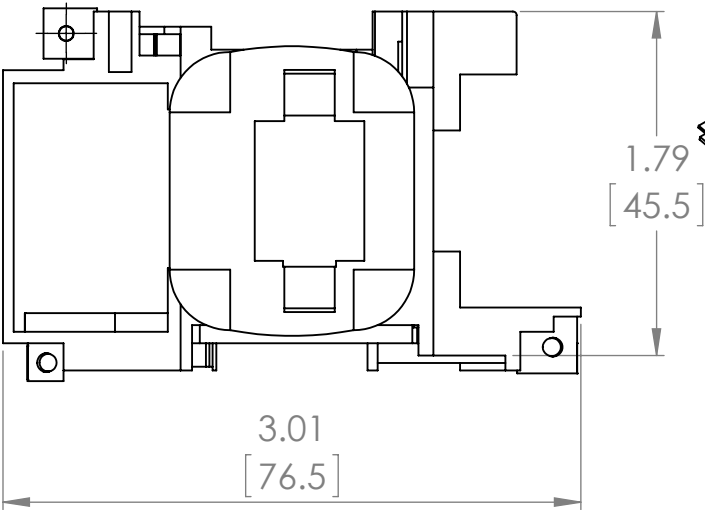
**PART NUMBER - BLX1D4B7 :** BRAH Electric, aftermarket direct replacement coils for Telemecanique LX1D4B7, TeSys D Series, type BLX1D, 24V AC 50/60Hz, suitable for use with LC1-D, 25 and 32 amp contactors

MAGNETIC COILS  
PART NO. BLX1D4B7

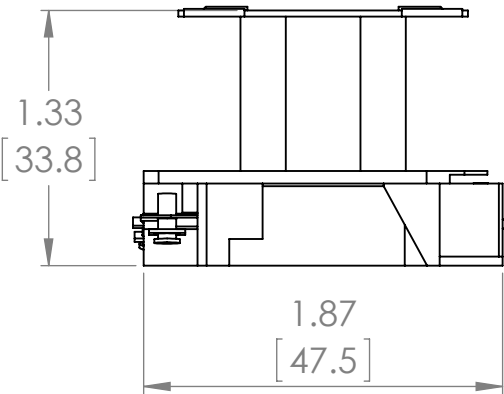
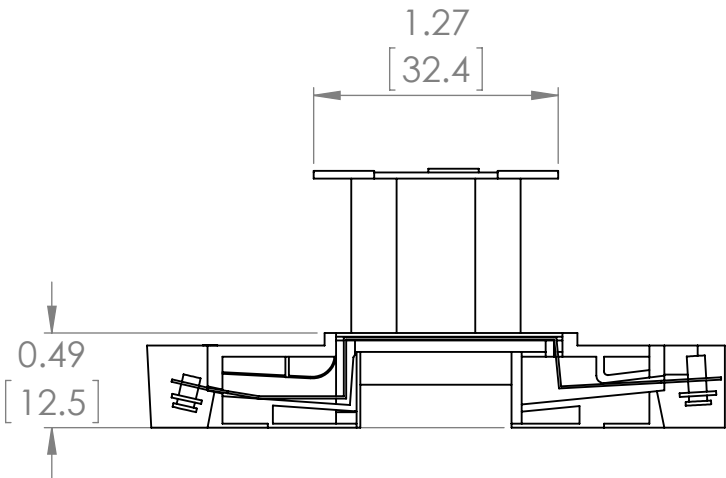
<b>MANUFACTURER</b>	BRAH Electric
<b>SUB-CATEGORY</b>	Coils
<b>FAMILY</b>	TeSys D
<b>TYPE</b>	BLX1D
<b>TYPE FOR</b>	LC1D25, LC1D32, LC2D25, LC2D32
<b>VOLTAGE</b>	24

**Warranty:** All Products sold by BRAH Electric are guaranteed to be free of defect for a period of one year, under the condition that the product has been installed and operated properly. All items proven defective within the one year period will be replaced by BRAH Electric. In the event that we cannot provide a direct replacement, your monies will be refunded in full. We are not responsible for any consequential losses or damages outside of the defective product as well as any replacements or repairs performed by another party without our written authorization from BRAH Electric.

REVISIONS				
ZONE	REV.	DESCRIPTION	DATE	APPROVED

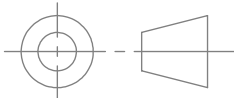



ISO VIEW



\*NOTE: BRAH ELECTRIC COILS BLX1D4B7 ARE A DIRECT REPLACEMENT FOR TELEMECANIQUE LX1D4B7, TESYS D SERIES, SUITABLE FOR USE WITH LC1D25, LC1D32, LC2D25, LC2D32 CONTACTORS

[WWW.BRAHELECTRIC.COM](http://WWW.BRAHELECTRIC.COM), 855-355-2724

<div></div> <div>THIRD ANGLE PROJECTION</div>	UNLESS OTHERWISE NOTED		<div></div>	
	ALL DIMENSIONS ARE IN INCHES METRIC UNITS ARE DISPLAYED BENEATH IN [ MM. ]			
	MATERIAL		MOTOR CONTROLS	
	FINISH	N/A		
DO NOT SCALE DRAWING		SIZE A	DWG. NO. BLX1D4B7	REV. A
		SCALE:1:1	WEIGHT:	SHEET 1 OF 1