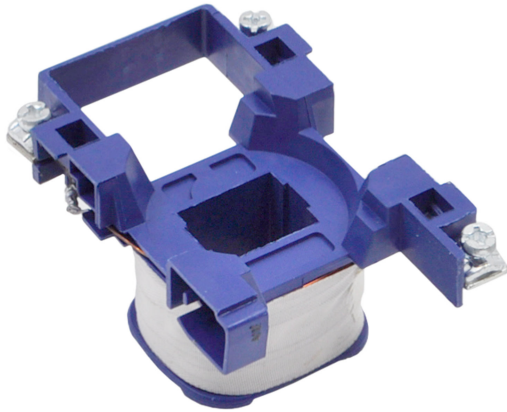


PRODUCT DATA SHEET



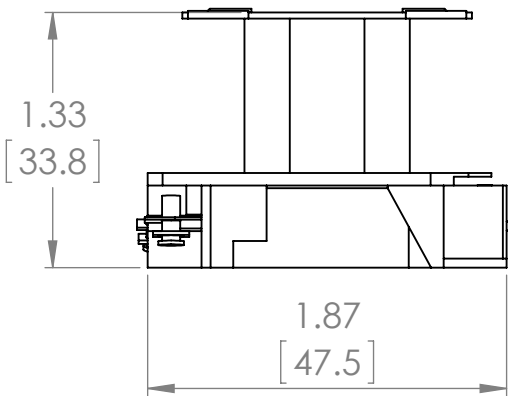
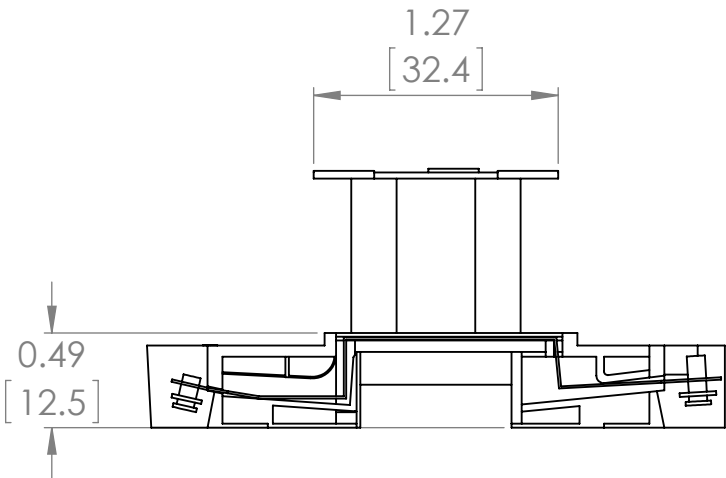
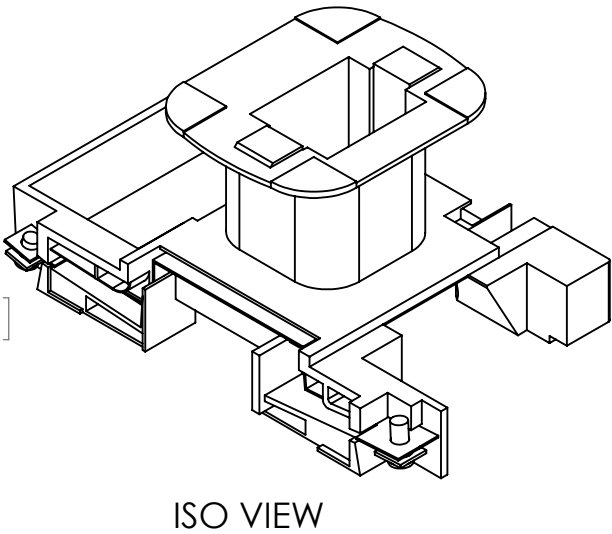
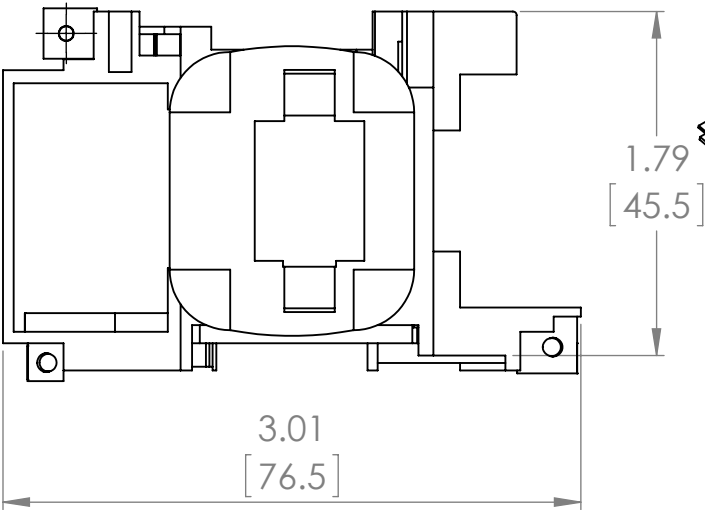
PART NUMBER - BLX1D4T7 : BRAH Electric, aftermarket direct replacement coils for Telemecanique LX1D4T7, TeSys D Series, type BLX1D, 480V AC 50/60Hz, suitable for use with LC1D25, LC1D32, LC2D25, LC2D32 contactors

MAGNETIC COILS
PART NO. BLX1D4T7

MANUFACTURER	BRAH Electric
SUB-CATEGORY	Coils
FAMILY	TeSys D
TYPE	BLX1D
TYPE FOR	LC1D25, LC1D32, LC2D25, LC2D32
VOLTAGE	480

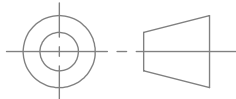

Warranty: All Products sold by BRAH Electric are guaranteed to be free of defect for a period of one year, under the condition that the product has been installed and operated properly. All items proven defective within the one year period will be replaced by BRAH Electric. In the event that we cannot provide a direct replacement, your monies will be refunded in full. We are not responsible for any consequential losses or damages outside of the defective product as well as any replacements or repairs performed by another party without our written authorization from BRAH Electric.

REVISIONS				
ZONE	REV.	DESCRIPTION	DATE	APPROVED



*NOTE: BRAH ELECTRIC
COILS BLX1D4T7 IS A
DIRECT REPLACEMENT
FOR TELEMECANIQUE
LX1D4T7, TESYS D SERIES,
SUITABLE FOR USE WITH
LC1D25, LC1D32, LC2D25,
LC2D32 CONTACTORS

WWW.BRAHELECTRIC.COM, 855-355-2724

<div></div> <div>THIRD ANGLE PROJECTION</div>	UNLESS OTHERWISE NOTED		<div></div>		
	ALL DIMENSIONS ARE IN INCHES METRIC UNITS ARE DISPLAYED BENEATH IN [MM.]				
	MATERIAL		MOTOR CONTROLS		
	FINISH	N/A			
DO NOT SCALE DRAWING		SIZE A	DWG. NO. BLX1D4T7	REV. A	
		SCALE:1:1	WEIGHT:	SHEET 1 OF 1	